

DATE: Dec 17, 2010 - 3:12pm PLOTTED BY: purgout IMAGES: XREF S: XBL1521075P12T01-blik XBL1521075P11T02V-BA

REVISIONS	DATE	BY	DESIGNED
			J. SWENSON
			DRAWN
			B. PURGANAN
			CHECKED
			H. LONGFELLOW
			APPROVED

ONE INCH AT FULL SCALE. IF NOT, SCALE ACCORDINGLY
FILE NAME
BL1521075P12T01MP-01
JOB No.
554-1521-075
DATE
DECEMBER 2010



Parametrix	ENGINEERING · PLANNING · ENVIRONMENTAL SCIENCES
411 108TH AVENUE N.E., SUITE 1800 BELLEVUE, WASHINGTON 98004 T: 425-458-8200 F: 425-458-6363 www.parametrix.com	

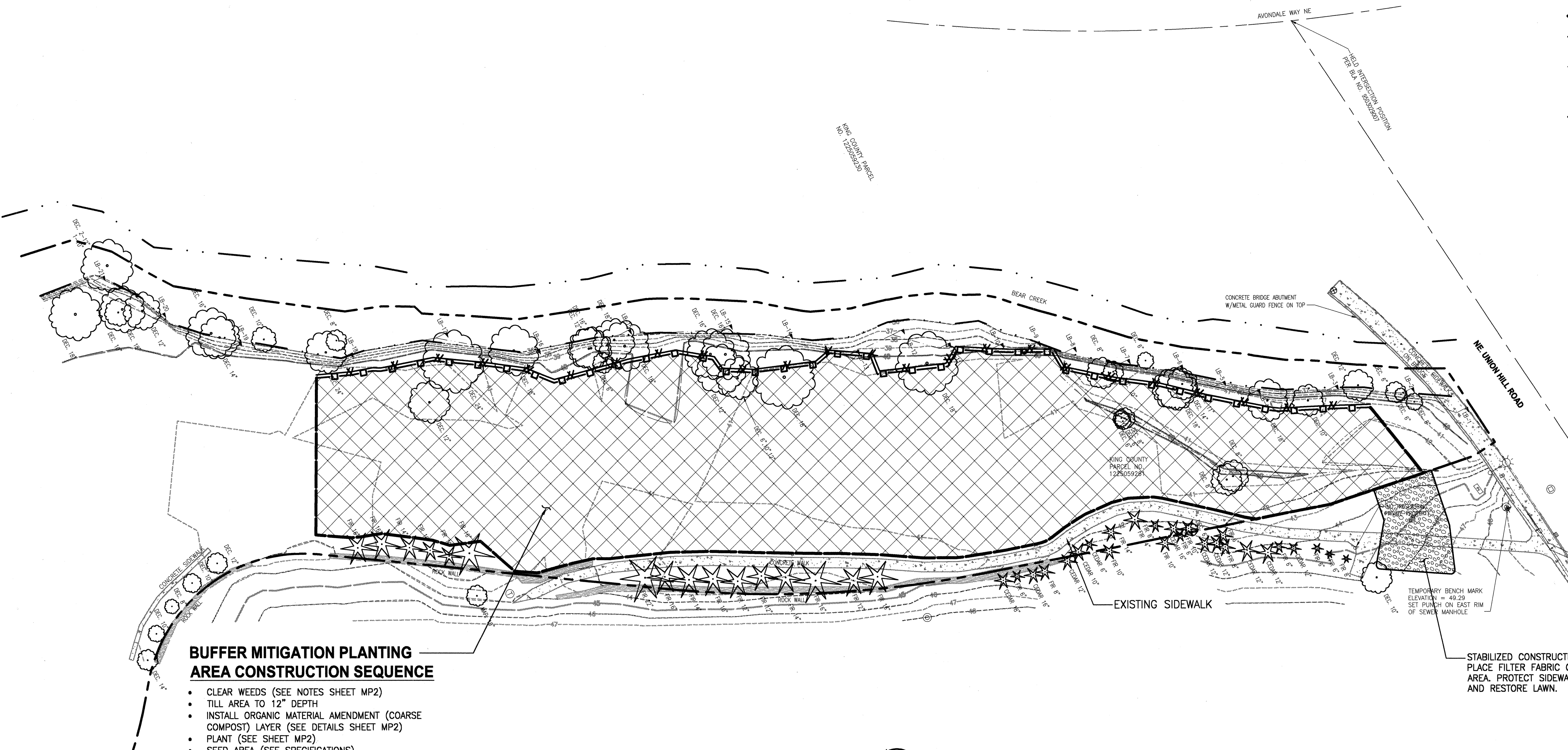
PROJECT NAME	EAST LAKE SAMMAMISH
MASTER PLAN TRAIL, REDMOND SEGMENT	
187TH AVENUE NE TO NE 70TH STREET	

MITIGATION PLANTING PLAN

DRAWING NO.	55 OF 72
MP1	

LEGEND:

- LIMIT OF WORK
- FILTER FABRIC FENCE PER COR STD. DETAIL #502
- HIGH VISIBILITY FENCE PER WSDOT STD PLAN 1-10.10-00 OHWM
- PROPERTY LINE
- BUFFER MITIGATION PLANTING AREA (SEE SHEET MP2 FOR PLANT LIST AND DETAILS)
- EXISTING TREES TO REMAIN



BUFFER MITIGATION PLANTING AREA CONSTRUCTION SEQUENCE

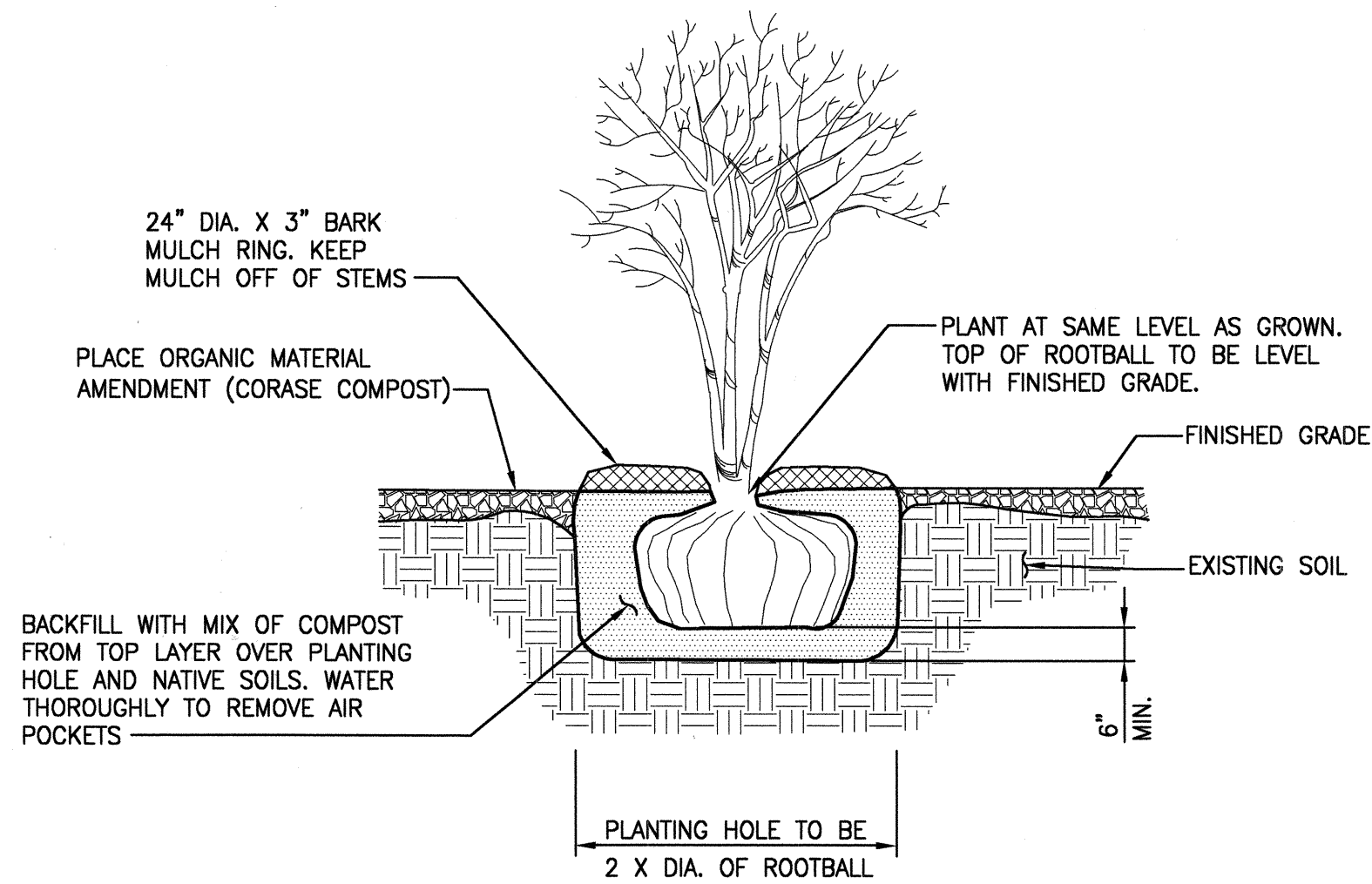
- CLEAR WEEDS (SEE NOTES SHEET MP2)
- TILL AREA TO 12" DEPTH
- INSTALL ORGANIC MATERIAL AMENDMENT (COARSE COMPOST) LAYER (SEE DETAILS SHEET MP2)
- PLANT (SEE SHEET MP2)
- SEED AREA (SEE SPECIFICATIONS)

THIS DEVELOPMENT SHALL BE CONSTRUCTED IN ACCORDANCE WITH THE CITY OF REDMOND STANDARD SPECIFICATIONS AND DETAILS, 2011 EDITION

APPROVED FOR CONSTRUCTION	PLAN CHK ENGR. <u>N/A</u>
FOR: WILLIAM J. CAMPBELL DIRECTOR OF PUBLIC WORKS CITY OF REDMOND	STORM <u>N/A</u>
	UTILITY <u>N/A</u>
	FIRE DEPT. <u>N/A</u>
	TRANS / ENGR. <u>N/A</u>
	PLANNING DEPT. <u>N/A</u>
DATE: _____	
THIS APPROVAL IS FOR THE DESIGN CONCEPT ONLY. THESE PLANS APPEAR TO BE IN CONFORMANCE WITH THE CITY OF REDMOND DESIGN STANDARDS FOR CONSTRUCTION. THIS APPROVAL SHALL NOT BE CONSTRUED AS AUTHORIZING CONSTRUCTION NOT IN ACCORDANCE WITH APPLICABLE CITY STANDARDS. THE CITY RESERVES THE RIGHT TO REQUIRE REVISIONS TO THE APPROVED PLANS TO ASSURE CONFORMANCE WITH CITY OF REDMOND DESIGN STANDARDS FOR CONSTRUCTION AT ANY TIME THAT IT IS DISCOVERED THAT THE PROPOSED CONSTRUCTION DOES NOT OTHERWISE MEET THE APPLICABLE CONSTRUCTION STANDARDS. THE OWNER IS REQUIRED TO PROVIDE DESIGNS AND PLANS IN ACCORDANCE WITH APPLICABLE CITY STANDARDS AND ASSURES THAT CONSTRUCTION IS ACCOMPLISHED IN ACCORDANCE WITH THOSE STANDARDS. THE OWNER AND/OR DESIGN ENGINEER AND/OR DEVELOPER MAY BE REQUIRED TO MAKE NECESSARY APPROVED FIELD REVISIONS TO CORRECT ANY ERRORS OR OMISSIONS FOUND ON THE APPROVED PLAN.	

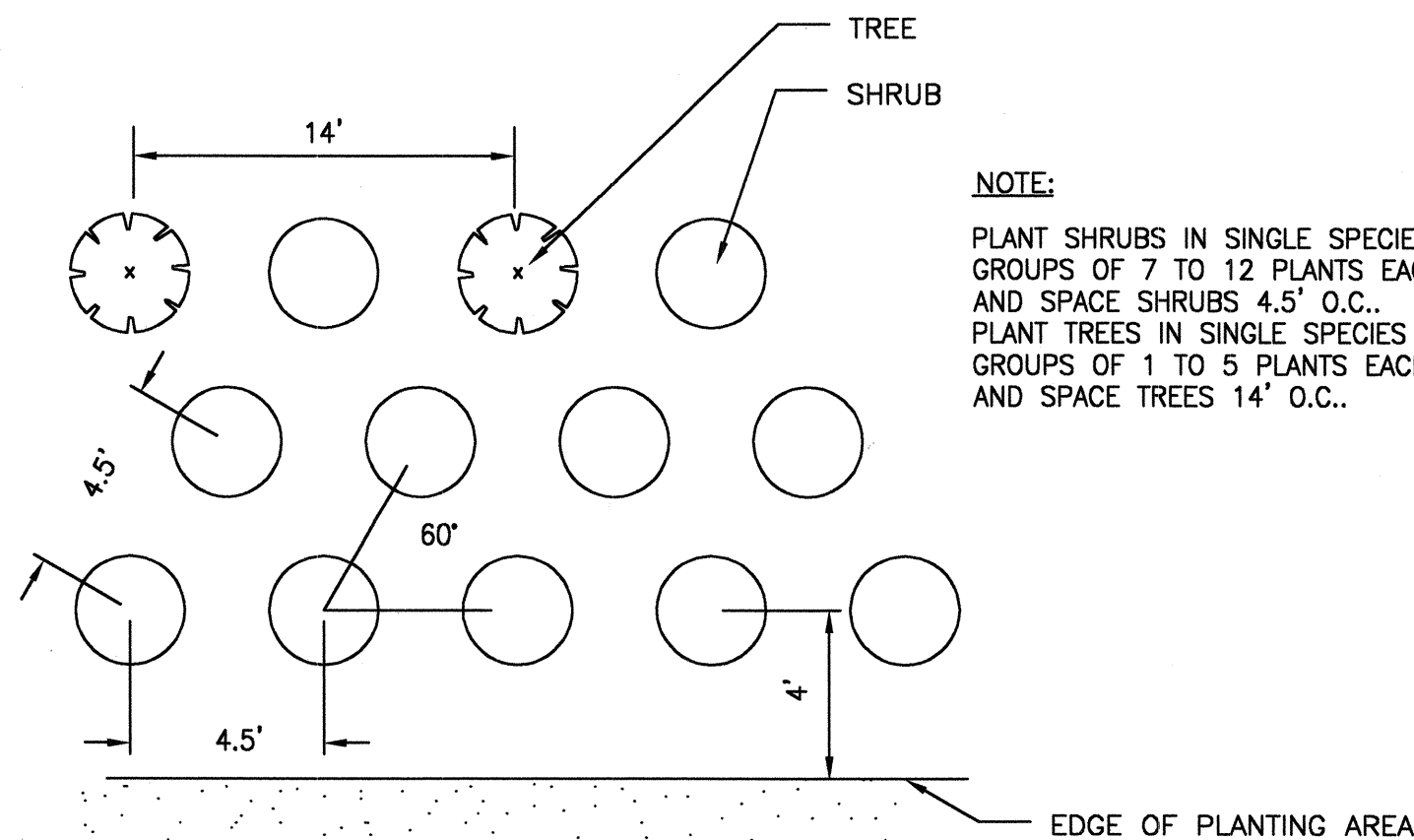
11-0204

DATE: Dec 17, 2010 - 3:17pm PLOTTED BY: purgabut
IMAGES: XREF S: XBL1521075P12T01-bk XBL1521075P11T02V-BA



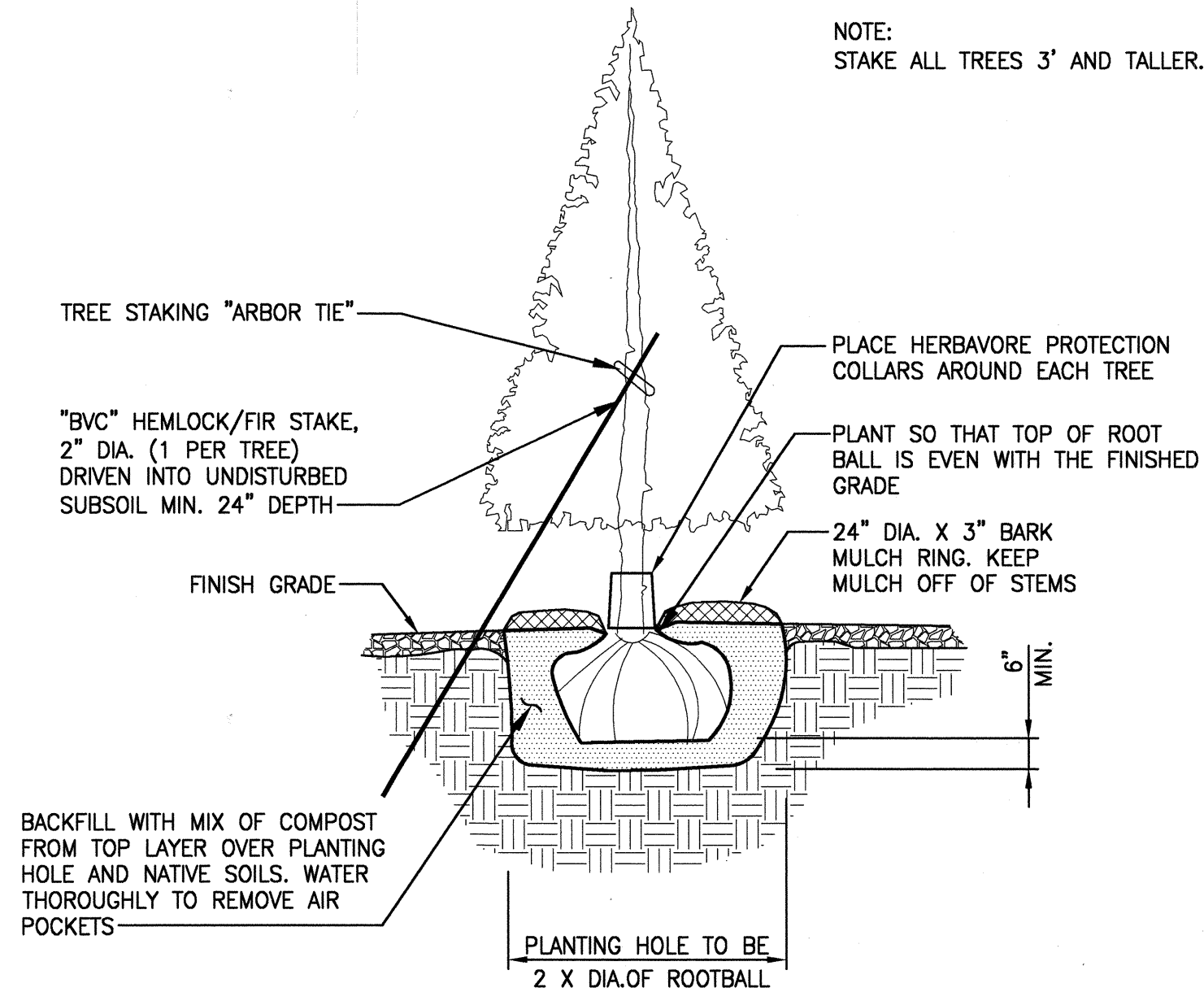
SHRUB PLANTING
DETAIL

NO SCALE



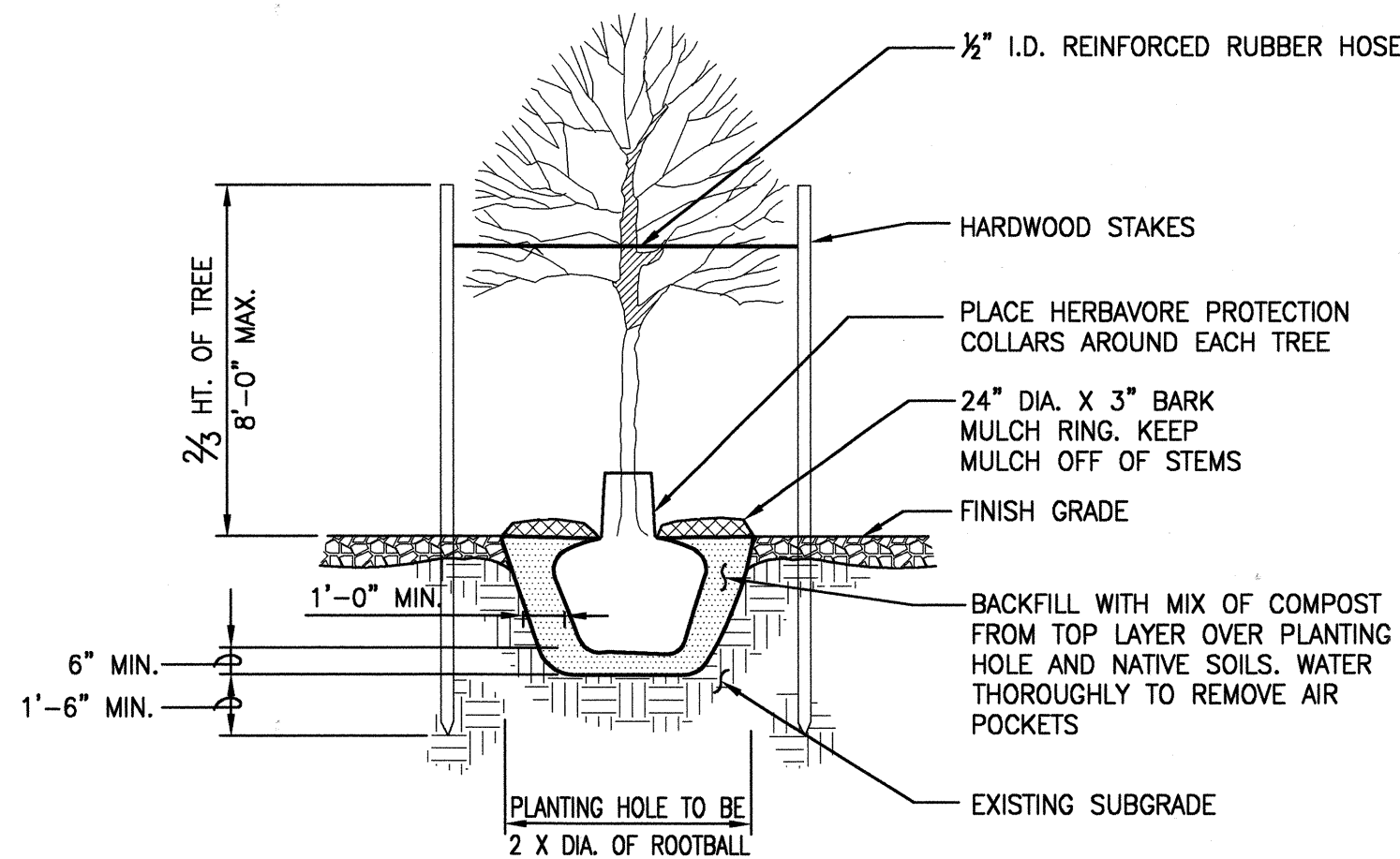
TYPICAL TREE AND SHRUB SPACING
DETAIL

NO SCALE



CONIFEROUS TREE PLANTING
DETAIL

NO SCALE



DECIDUOUS TREE PLANTING
DETAIL

NO SCALE

BUFFER RESTORATION CONSTRUCTION NOTES:

1. PRIOR TO MITIGATION CONSTRUCTION, CLEARING LIMITS SHALL BE CLEARLY IDENTIFIED WITH HIGH VISIBILITY FENCE. THE KC PROJECT REPRESENTATIVE SHALL VERIFY AND APPROVE FENCE LOCATIONS PRIOR TO CONSTRUCTION.
2. CONTRACTOR SHALL ARRANGE TO MEET ON SITE WITH THE KC PROJECT REPRESENTATIVE TO DISCUSS LIMITS OF WORK AND METHODS. CONSTRUCTION ACTIVITIES SHALL NOT COMMENCE UNTIL ACCESS, LIMITS OF WORK, AND METHODS ARE APPROVED BY THE KC PROJECT REPRESENTATIVE.
3. MITIGATION PLANTING PLANS REPRESENT A CONCEPTUAL PLANT LAYOUT. FINAL PLANT LOCATIONS SHALL BE DETERMINED DURING CONSTRUCTION DRAWING REVIEW AND APPROVAL. ANY FIELD CHANGES TO BE APPROVED BY THE KC PROJECT REPRESENTATIVE.
4. WITHIN THE BUFFER MITIGATION PLANTING AREA CLEAR AND GRUB OUT ALL REED CANARY GRASS, BLACKBERRY AND ALL OTHER WEEDS. REMOVE AND DISPOSE OF MATERIAL. AFTER CLEARING, DISC OR TILL AREA TO A TWELVE (12) INCH MIN. DEPTH. USE ONLY HAND TOOLS TO CLEAR AND CULTIVATE SOIL UNDER THE CANOPY (WITHIN AND 5' OUTSIDE THE DRIPLINE) OF EXISTING TREES. PLACE THREE (3) INCH MIN. LAYER OF COARSE COMPOST (SEE SPECIFICATION FOR ORGANIC MATERIAL AMENDMENT) OVER ENTIRE PLANTING AREA. SEED AND PLANT AREA.
5. ALL PLANTS SHALL BE NURSERY GROWN A MINIMUM OF ONE YEAR. PLANT MATERIAL IS TO BE SUPPLIED BY COMMERCIAL NURSERIES THAT SPECIALIZE IN PLANTS NATIVE TO THE PACIFIC NORTHWEST. PLANT SUBSTITUTIONS ARE SUBJECT TO APPROVAL BY THE KC PROJECT REPRESENTATIVE.
6. MITIGATION PLANTING SHALL TAKE PLACE DURING THE DORMANT SEASON (NOVEMBER 1ST TO FEBRUARY 28TH). PLANTING MAY BE ALLOWED AT OTHER TIMES AFTER REVIEW AND WRITTEN APPROVAL BY THE KC PROJECT REPRESENTATIVE.
7. THE CONTRACTOR SHALL BE RESPONSIBLE FOR DISPOSING OF ALL DEBRIS AND EXCESS SOIL OCCASIONED BY THIS PROJECT.
8. CONTRACTOR SHALL VERIFY THE LOCATION OF ALL UTILITIES PRIOR TO EXCAVATION.
9. ALL DIMENSIONS FOR PLANT SIZES ARE MINIMUM REQUIREMENTS.
10. EXISTING AREAS DISTURBED BY CONSTRUCTION ACTIVITIES AND NOT SHOWN TO BE RE-VEGETATED ON THESE PLANS SHALL BE RESTORED AND SEEDED.
11. DISCREPANCIES BETWEEN THE PLANS AND SITE CONDITIONS SHALL BE BROUGHT TO THE ATTENTION OF THE KC PROJECT REPRESENTATIVE PRIOR TO PROCEEDING.
12. NO TACKIFIER, HERBICIDE OR FERTILIZER SHALL BE USED IN THE WETLAND/STREAM PLANTING AREAS. HAND SEED, RAKE SEED LIGHTLY INTO SOIL.
13. THE CONTRACTOR SHALL BE RESPONSIBLE FOR WATERING PLANTS FOR THE FIRST YEAR. DURING JUNE 1ST THROUGH SEPTEMBER 30TH, PLANTS SHALL BE WATERED AT MINIMUM, ONCE EVERY TWO WEEKS, OR AS DIRECTED BY THE PROJECT REPRESENTATIVE. THE COUNTY WILL MAKE PROVISIONS FOR WATERING AS NEEDED FOR THE REMAINDER OF THE ESTABLISHMENT PERIOD AFTER THE FIRST YEAR.

PLANT MATERIAL LIST FOR BUFFER MITIGATION AREA (39, 644 SF)

SCIENTIFIC NAME	COMMON NAME	QUANTITY	SIZE	CONDITION
ACER MACROPHYLLUM	BIG LEAF MAPLE	41	1 IN. CAL., 6 FT. MIN. HT.	B&B OR CONTAINER
AMELANCHIER ALNIFOLIA	SERVICEBERRY	27	6 FT. MIN. HT.	B&B OR CONTAINER
FRAXINUS LATIFOLIA	OREGON ASH	27	1 IN. CAL., 6 FT. MIN. HT.	B&B OR CONTAINER
PICEA SITCHENSIS	SITKA SPRUCE	41	3 FT. MIN. HT.	B&B OR CONTAINER
PSUEDOTSUGA MENZIESII	DOUGLAS FIR	55	3 FT. MIN. HT.	B&B OR CONTAINER
RHAMNUS PURSHIANA	CASCARA	27	6 FT. MIN. HT.	B&B OR CONTAINER
THUJA PLICATA	WESTERN RED CEDAR	55	3 FT. MIN. HT.	B&B OR CONTAINER
Shrubs				
CORNUS SERICEA	RED TWIG DOGWOOD	164	18 IN. NOT LESS THAN 2 CANES	CONTAINER
HOLODISCUS DISCOLOR	OCEAN SPRAY	246	18 IN. NOT LESS THAN 2 CANES	CONTAINER
OEMLARIA CERASIFORMIS	INDIAN PLUM	164	18 IN. NOT LESS THAN 2 CANES	CONTAINER
ROSA NUTKANA	NOOTKA ROSE	410	18 IN. NOT LESS THAN 2 CANES	CONTAINER
RUBUS SPECTABILIS	SALMONBERRY	246	18 IN. NOT LESS THAN 2 CANES	CONTAINER
SAMBUCUS RACEMOSA	RED ELDERBERRY	164	18 IN. NOT LESS THAN 2 CANES	CONTAINER
SYMPHORICARPOS ALBUS	SNOWBERRY	246	18 IN. NOT LESS THAN 2 CANES	CONTAINER

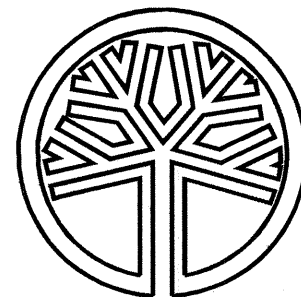
THIS DEVELOPMENT SHALL BE CONSTRUCTED IN ACCORDANCE WITH THE CITY OF REDMOND STANDARD SPECIFICATIONS AND DETAILS, 2011 EDITION

APPROVED FOR CONSTRUCTION	PLAN CHK ENGR <i>N/A</i>
FOR: WILLIAM J. CAMPBELL DIRECTOR OF PUBLIC WORKS CITY OF REDMOND	STORM <i>N/A</i> UTILITY <i>N/A</i> FIRE DEPT <i>N/A</i> TRANS / ENGR <i>N/A</i> PLANNING DEPT <i>Kevin John 1-14-11</i>
DATE: _____	
THIS APPROVAL IS FOR THE DESIGN CONCEPT ONLY. THESE PLANS APPEAR TO BE IN CONFORMANCE WITH THE CITY OF REDMOND DESIGN STANDARDS FOR CONSTRUCTION. THIS APPROVAL SHALL NOT BE CONSTRUED AS AUTHORIZING CONSTRUCTION NOT IN ACCORDANCE WITH APPLICABLE CITY STANDARDS. THE CITY RESERVES THE RIGHT TO REQUIRE REVISIONS TO THE APPROVED PLANS TO ASSURE CONFORMANCE WITH CITY OF REDMOND DESIGN STANDARDS FOR CONSTRUCTION AT ANY TIME THAT IT IS DISCOVERED THAT THE PROPOSED CONSTRUCTION DOES NOT OTHERWISE MEET THE APPLICABLE CONSTRUCTION STANDARDS. THE OWNER IS REQUIRED TO PROVIDE DESIGNS AND PLANS IN ACCORDANCE WITH APPLICABLE CITY STANDARDS AND ASSURES THAT CONSTRUCTION IS ACCOMPLISHED IN ACCORDANCE WITH THOSE STANDARDS. THE OWNER AND/OR DESIGN ENGINEER AND/OR DEVELOPER MAY BE REQUIRED TO MAKE NECESSARY APPROVED FIELD REVISIONS TO CORRECT ANY ERRORS OR OMISSIONS FOUND ON THE APPROVED PLAN.	

11-0205

REVISIONS	DATE	BY	DESIGNED J. SWENSON
			DRAWN B. PURGANAN
			CHECKED H. LONGFELLOW
			APPROVED

ONE INCH AT FULL SCALE.
IF NOT, SCALE ACCORDINGLY
FILE NAME
BL1521075P12T01MP-01
JOB No.
354-1521-075
DATE
DECEMBER 2010



STATE OF WASHINGTON
REGISTERED
LANDSCAPE ARCHITECT
Jens Swenson
CERTIFICATE NO. 656

Parametrix

ENGINEERING . PLANNING . ENVIRONMENTAL SCIENCES

411 108TH AVENUE N.E., SUITE 1800
BELLEVUE, WASHINGTON 98004
T. 425.458.6200 F. 425.458.6383
www.parametrix.com

PROJECT NAME

EAST LAKE SAMMAMISH
MASTER PLAN TRAIL, REDMOND SEGMENT

187TH AVENUE NE TO NE 70TH STREET

MITIGATION PLANTING DETAILS

DRAWING NO.
56 OF 72

MP2

SEC'S 7,18, TWP. 25 N., RGE. 06 E and SEC. 12, TWP. 25 N., RGE. 05 E.

LEGEND:

- PARKING ISLAND PLANTING AREA, SEE SHEET BR2 FOR PLANT LIST AND DETAILS.
- BIORETENTION PLANT MIX, SEE SHEET BR2 FOR PLANT LIST AND DETAILS.
- SEEDED LAWN INSTALLATION
- NEW TREES, SEE SHEET BR2 FOR PLANT LIST AND DETAILS.
- 20' X 65' SIGHT DISTANCE TRIANGLE (TREES IN TRIANGLE MUST HAVE CANOPIES TRIMMED AT LEAST 8 FEET HIGH)

NUMBER OF PARKING = 77 STALLS
PROPOSED VEHICLE USE AREA = 41240 SF
MINIMUM REQ'D PLANTING = 2980 SF
TOTAL PLANTING AREA = 3221 SF (EXCLUDING BIORETENTION AREA)

NOTES:

- 1 PLANT TREES AND SHRUBS AND PLACE TOP SOIL AND MULCH IN THIS AREA. SEE SHEET BR2 FOR PLANT LIST AND DETAILS.
- 2 LOOSEN COMPACTED SOILS AND PLACE 12" TOPSOIL AND PLANT TREES AND SHRUBS IN THIS AREA. SEE SHEET BR2 FOR PLANT LIST AND DETAILS.
- 3 LOOSEN COMPACTED SOILS AND PLACE 12" DEPTH TOPSOIL IN THIS AREA.

PLAN

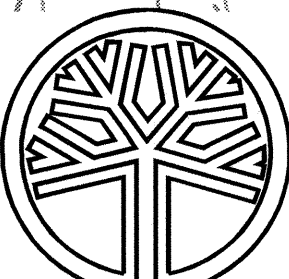
SCALE IN FEET
0 20 40

PLAN

SCALE IN FEET
0 20 40

MATCH LINE - SEE ABOVE

MATCH LINE - SEE BELOW



STATE OF WASHINGTON
REGISTERED
LANDSCAPE ARCHITECT
JENS SWENSON
CERTIFICATE NO. 656

Parametrix

ENGINEERING · PLANNING · ENVIRONMENTAL SCIENCES

411 108TH AVENUE N.E., SUITE 1800
BELLEVUE, WASHINGTON 98004
T. 425.458.8200 F. 425.458.8363
www.parametrix.com

PROJECT NAME

EAST LAKE SAMMAMISH
MASTER PLAN TRAIL, REDMOND SEGMENT

187TH AVENUE NE TO NE 70TH STREET

BIORETENTION AND PARKING LOT
PLANTING PLAN

DRAWING NO.
57 OF 72

BR1

REVISIONS	DATE	BY	DESIGNED
			J. SWENSON
			DRAWN B. PURGANAN
			CHECKED H. LONGFELLOW
			APPROVED

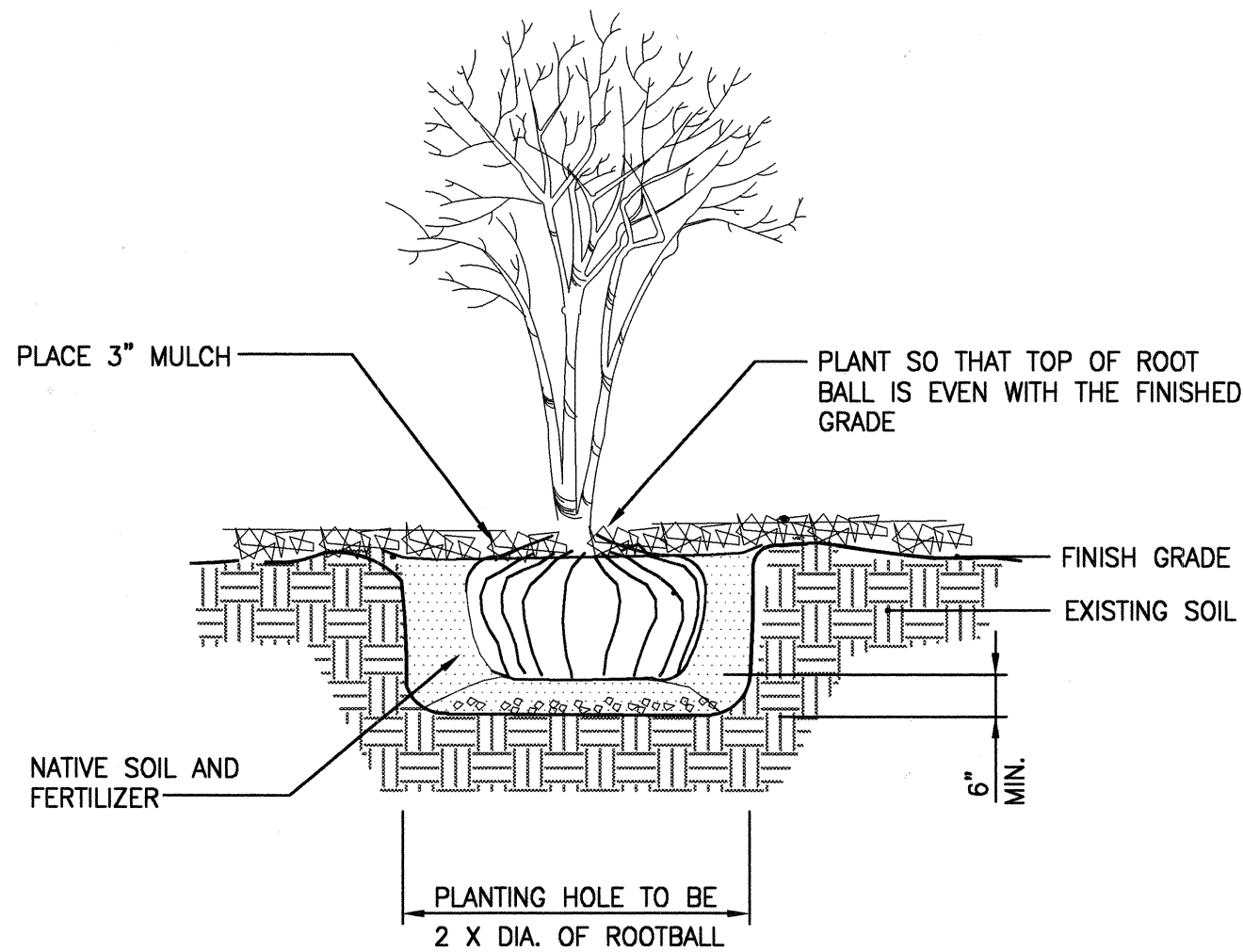
ONE INCH AT FULL SCALE. IF NOT, SCALE ACCORDINGLY.
FILE NAME BL1521075P12T01BR-01
JOB NO. 554-1521-075
DATE DECEMBER 2010

THIS DEVELOPMENT SHALL BE CONSTRUCTED IN ACCORDANCE WITH THE CITY OF REDMOND STANDARD SPECIFICATIONS AND DETAILS, 2011 EDITION

APPROVED FOR CONSTRUCTION	PLAN CHK ENGR
FOR: WILLIAM J. CAMPBELL DIRECTOR OF PUBLIC WORKS CITY OF REDMOND	STORM 11-01-12-11 UTILITY N/A FIRE DEPT N/A TRANS / ENGR N/A PLANNING DEPT
DATE:	

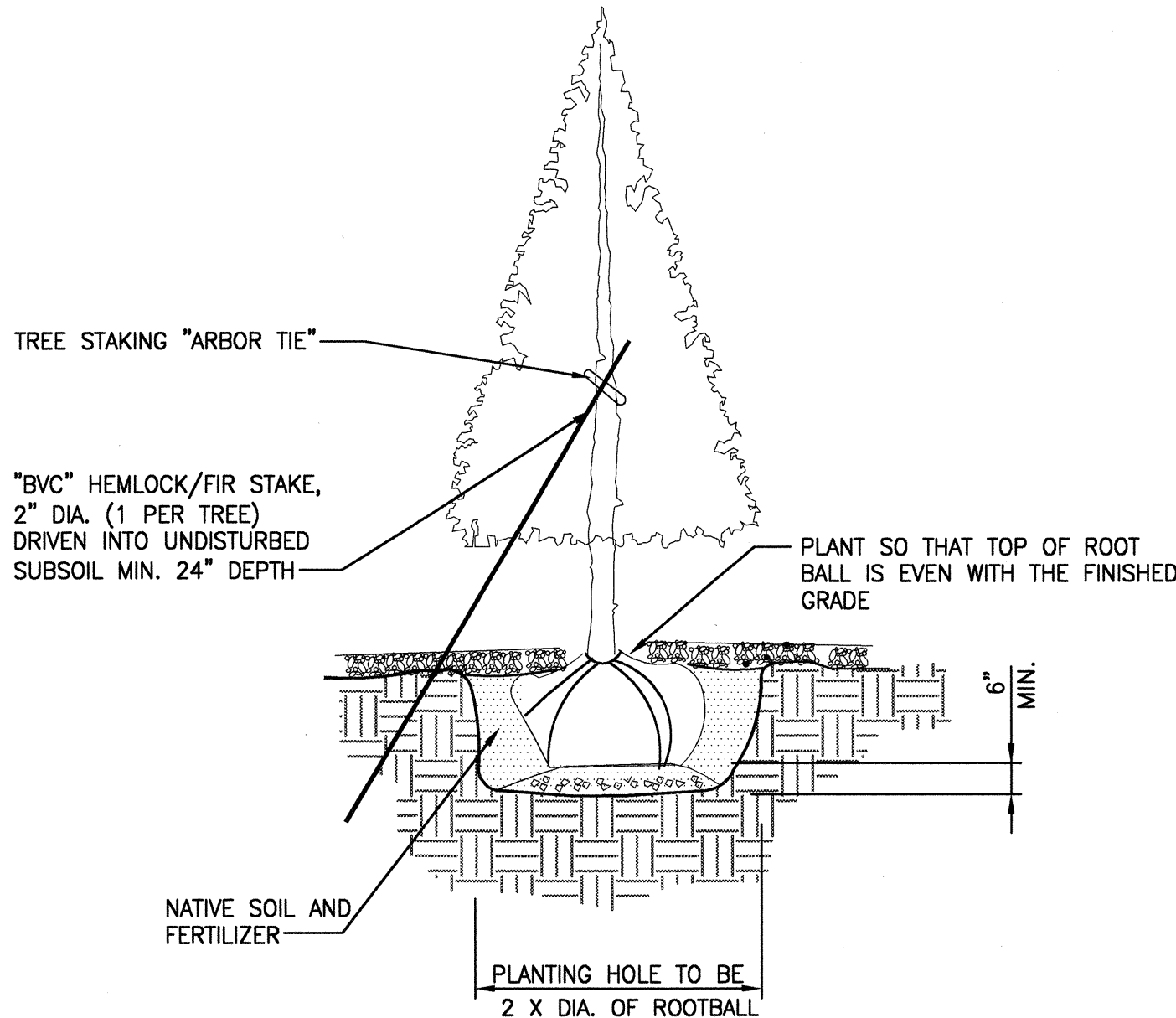
THIS APPROVAL IS FOR THE DESIGN CONCEPT ONLY. THESE PLANS APPEAR TO BE IN CONFORMANCE WITH THE CITY OF REDMOND DESIGN STANDARDS FOR CONSTRUCTION. THIS APPROVAL SHALL NOT BE CONSTRUED AS AUTHORIZING CONSTRUCTION NOT IN ACCORDANCE WITH APPLICABLE CITY STANDARDS. THE CITY RESERVES THE RIGHT TO REQUIRE REVISIONS TO THE APPROVED PLANS TO ASSURE CONFORMANCE WITH CITY OF REDMOND DESIGN STANDARDS FOR CONSTRUCTION AT ANY TIME THAT IT IS DISCOVERED THAT THE PROPOSED CONSTRUCTION DOES NOT OTHERWISE MEET THE APPLICABLE CONSTRUCTION STANDARDS. THE WINNER IS REQUIRED TO PROVIDE DESIGNS AND PLANS IN ACCORDANCE WITH APPLICABLE CITY STANDARDS AND ASSURES THAT CONSTRUCTION IS ACCOMPLISHED IN ACCORDANCE WITH THOSE STANDARDS. THE OWNER AND/OR DESIGN ENGINEER AND/OR DEVELOPER MAY BE REQUIRED TO MAKE NECESSARY APPROVED FIELD REVISIONS TO CORRECT ANY ERRORS OR OMISSIONS FOUND ON THE APPROVED PLAN.

11-0206



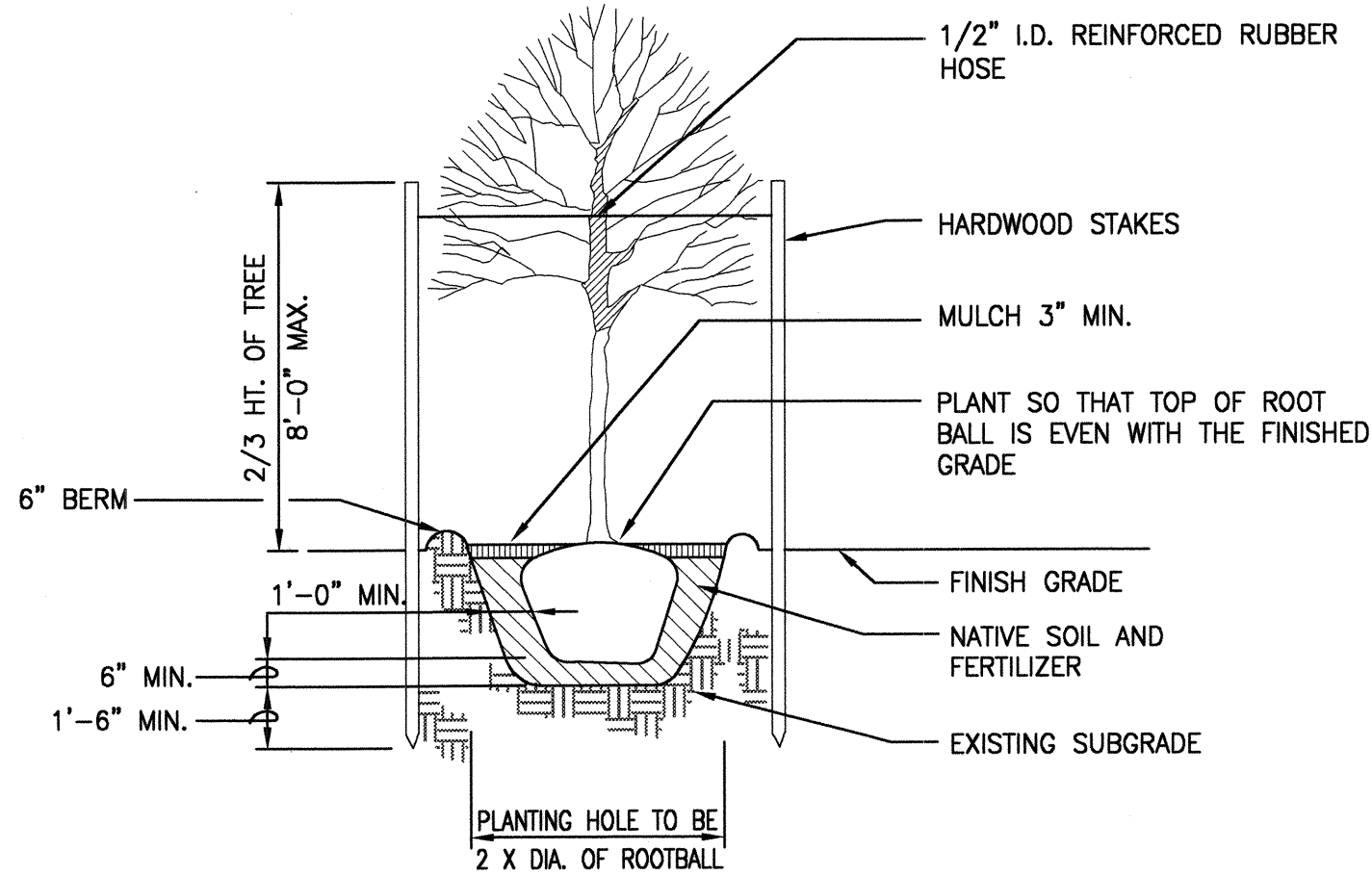
SHRUB PLANTING
DETAIL

NO SCALE



CONIFEROUS TREE PLANTING
DETAIL

NO SCALE



DECIDUOUS TREE PLANTING
DETAIL

NO SCALE

PLANT LIST

ABBREVIATION/ CALLOUT	QUANTITY	BOTANICAL NAME	COMMON NAME	SIZE/CONDITION	SPACING/NOTES
TREES					
AA	23	AMELANCHIER ALNIFOLIA	WESTERN SERVICEBERRY	8 FT TALL MIN	AS SHOWN
AG	12	ACER GRANDIDENTATUM 'SCHMIDT'	ROCKY MTN. GLOW MAPLE	1 1/2" CALIPER	AS SHOWN
CC	5	CERCIS CANADENSIS	EASTERN REDBUD	1 1/2" CALIPER	AS SHOWN
CJ	22	CERCIDIPHYLUM JAPONICA	KATSURA	1 1/2" CALIPER	AS SHOWN
FP	12	FRAXINUS PENNSYVANICA 'PATMORE'	PATMORE ASH	2" CALIPER	AS SHOWN
TP	11	THUJA PLICATA	WESTERN RED CEDAR	8 FT TALL MIN	AS SHOWN
BIORETENTION AREA SHRUBS					
CSC	73	CORNUS SERICEA 'COMPLACTA'	RED TWIG DOGWOOD	3 FT TALL MIN CONT OR BARE ROOT	36" O.C./PLANT IN GROUPS OF 3 TO 7
CSF	73	CORNUS SERICEA 'FLAVIMERA'	YELLOW TWIG DOGWOOD	3 FT TALL MIN CONT OR BARE ROOT	4.5 FT O.C./PLANT IN GROUPS OF 3 TO 7
PM	83	POLYSTICHUM MUNITUM	SWORD FERN	3 FT TALL MIN CONT OR BARE ROOT	4.5 FT O.C./PLANT IN GROUPS OF 3 TO 7
SA	76	SYMPHRICARPOS ALBUS	SNOWBERRY	3 FT TALL MIN CONT OR BARE ROOT	4.5 FT O.C./PLANT IN GROUPS OF 3 TO 7
RR	83	ROSA RUGOSA 'HANSA'	SHRUB ROSE	3 FT TALL MIN CONT OR BARE ROOT	36" O.C./PLANT IN GROUPS OF 3 TO 7
PLANTING AREA AT 187TH AVE NE					
GS	75	GAULTHERIA SHALLON	SALAL	1 GAL CONT	3 FT O.C.
BIORETENTION AREA GROUNDCOVERS					
AU	161	ARTOSTAPHYLOS UVA-URSI	KINNIKINNICK	4 IN POTS	18" O.C./PLANT IN GROUPS OF 10 TO 20
FC	161	FRAGERIA CHILLOENSIS	SAND STAWBERRY	4 IN POTS	18" O.C./PLANT IN GROUPS OF 10 TO 20
PARKING ISLAND AREA GROUNDCOVERS AND GRASSES					
FC	215	FRAGERIA CHILLOENSIS	SAND STAWBERRY	4 IN POTS	18" FT O.C./PLANT THROUGHOUT AREA
HS	65	HELICTRICHON SEMPEVIRENS	BLUE OAT GRASS	5 GAL CONT OR BARE ROOT	3 FT O.C./PLANT IN GROUPS OF 3
CSK	65	CORNUS SERICEA 'KELSEY'	DWARF RED TWIG DOGWOOD	5 GAL CONT OR BARE ROOT	3 FT O.C./PLANT IN GROUPS OF 3
NE 70TH ST PLANTER STRIP SHRUBS					
CSK	4	CORNUS SERICEA 'KELSEY'	DWARF RED TWIG DOGWOOD	5 GAL CONT OR BARE ROOT	3 FT O.C./PLANT IN GROUPS OF 4
VD	4	VIBURNUM DAVIDI	DAVIDS VIBURNUM	5 GAL CONT OR BARE ROOT	3 FT O.C./PLANT IN GROUPS OF 4

CONSTRUCTION NOTE:

1. THE CONTRACTOR SHALL BE RESPONSIBLE FOR WATERING PLANTS FOR THE FIRST YEAR. THE COUNTY WILL MAKE PROVISIONS FOR WATERING AS NEEDED FOR THE REMAINDER OF THE ESTABLISHMENT PERIOD.

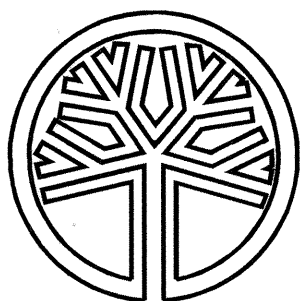
THIS DEVELOPMENT SHALL BE CONSTRUCTED IN ACCORDANCE WITH THE CITY OF REDMOND STANDARD SPECIFICATIONS AND DETAILS, 2011 EDITION

APPROVED FOR CONSTRUCTION	PLAN CHK ENGR <i>N/A</i>
FOR: WILLIAM J. CAMPBELL DIRECTOR OF PUBLIC WORKS CITY OF REDMOND	STORM: <i>12-01-12-11</i> UTILITY: <i>N/A</i> FIRE DEPT: <i>N/A</i> TRANS / ENGR: <i>N/A</i> PLANNING DEPT: <i>Kerry Shaw 1/14/11</i>
DATE: _____	
THIS APPROVAL IS FOR THE DESIGN CONCEPT ONLY. THESE PLANS APPEAR TO BE IN CONFORMANCE WITH THE CITY OF REDMOND DESIGN STANDARDS FOR CONSTRUCTION. THIS APPROVAL SHALL NOT BE CONSTRUED AS AUTHORIZING CONSTRUCTION NOT IN ACCORDANCE WITH APPLICABLE CITY STANDARDS. THE CITY RESERVES THE RIGHT TO REQUIRE REVISIONS TO THE APPROVED PLANS TO ASSURE CONFORMANCE WITH CITY OF REDMOND DESIGN STANDARDS FOR CONSTRUCTION AT ANY TIME THAT IT IS DISCOVERED THAT THE PROPOSED CONSTRUCTION DOES NOT OTHERWISE MEET THE APPLICABLE CONSTRUCTION STANDARDS. THE OWNER IS REQUIRED TO PROVIDE DESIGNS AND PLANS IN ACCORDANCE WITH APPLICABLE CITY STANDARDS AND ASSURES THAT CONSTRUCTION IS ACCOMPLISHED IN ACCORDANCE WITH THOSE STANDARDS. THE OWNER AND/OR DESIGN ENGINEER AND/OR DEVELOPER MAY BE REQUIRED TO MAKE NECESSARY APPROVED FIELD REVISIONS TO CORRECT ANY ERRORS OR OMISSIONS FOUND ON THE APPROVED PLAN.	

11-0207

REVISIONS	DATE	BY	DESIGNED J. SWENSON
			DRAWN B. PURGANAN
			CHECKED H. LONGFELLOW
			APPROVED

ONE INCH AT FULL SCALE.
IF NOT, SCALE ACCORDINGLY
FILE NAME
BL1521075P12T01BR-01
JOB No.
554-1521-075
DATE
DECEMBER 2010



JENS SWENSON
CERTIFICATE NO. 656

Parametrix

411 108TH AVENUE N.E., SUITE 1000
BELLEVUE, WASHINGTON 98004
T. 425.458.8200 F. 425.458.6383
www.parametrix.com

ENGINEERING · PLANNING · ENVIRONMENTAL SCIENCES

PROJECT NAME

EAST LAKE SAMMAMISH
MASTER PLAN TRAIL, REDMOND SEGMENT

187TH AVENUE NE TO NE 70TH STREET

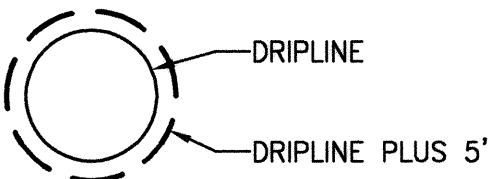
BIORETENTION AND PARKING LOT
PLANTING DETAILS

DRAWING NO.
58 OF 72

BR2

LEGEND:

- UNHEALTHY (POOR) TREE TO BE REMOVED
- UNHEALTHY (POOR) TREE TO REMAIN
- SIGNIFICANT TREE TO BE REMOVED
- LANDMARK TREE TO BE SAVED
- LANDMARK TREE TO BE IMPACTED
- SIGNIFICANT TREE TO BE IMPACTED
- SIGNIFICANT TREE TO BE SAVED (NO INCURSION IN THE DRIPLINE PLUS 5 FEET BEYOND IT)



- TREES LESS THAN 6" IN DIAMETER ARE NOT SHOWN.
- SEE SHEET TP12 FOR PLANT LIST AND DETAILS.
- LANDSCAPE ARCHITECT TO STAKE LOCATIONS FOR PLANTING IN FIELD.
- AREA FOR PLANTING REPLACEMENT.

PLANTING REPLACEMENT NOTES:

- PLANT 5 OREGON ASH AND 2 DOUGLAS FIR IN THIS AREA.
- PLANT 2 DOUGLAS FIR AND 5 BIG LEAF MAPLE IN THIS AREA.

THIS DEVELOPMENT SHALL BE CONSTRUCTED IN ACCORDANCE WITH THE CITY OF REDMOND STANDARD SPECIFICATIONS AND DETAILS, 2011 EDITION

APPROVED FOR CONSTRUCTION	PLAN CHK ENGR. <u>N/A</u>
FOR: WILLIAM J. CAMPBELL DIRECTOR OF PUBLIC WORKS CITY OF REDMOND	STORM. <u>N/A</u>
	UTILITY. <u>N/A</u>
	FIRE DEPT. <u>N/A</u>
	TRANS / ENGR. <u>N/A</u>
	PLANNING DEPT. <u>11-0208</u>
DATE:	
THIS APPROVAL IS FOR THE DESIGN CONCEPT ONLY. THESE PLANS APPEAR TO BE IN CONFORMANCE WITH THE CITY OF REDMOND DESIGN STANDARDS FOR CONSTRUCTION. THIS APPROVAL SHALL NOT BE CONSTRUED AS AUTHORIZING CONSTRUCTION NOT IN ACCORDANCE WITH APPLICABLE CITY STANDARDS. THE CITY RESERVES THE RIGHT TO REQUIRE REVISIONS TO THE APPROVED PLANS TO ASSURE CONFORMANCE WITH CITY OF REDMOND DESIGN STANDARDS FOR CONSTRUCTION AT ANY TIME THAT IT IS DISCOVERED THAT THE PROPOSED CONSTRUCTION DOES NOT OTHERWISE MEET THE APPLICABLE CONSTRUCTION STANDARDS. THE OWNER IS REQUIRED TO PROVIDE DESIGN AND PLANS IN ACCORDANCE WITH APPLICABLE CITY STANDARDS AND ASSURES THAT CONSTRUCTION IS ACCOMPLISHED IN ACCORDANCE WITH THOSE STANDARDS. THE OWNER AND/OR DESIGN ENGINEER AND/OR DEVELOPER MAY BE REQUIRED TO MAKE NECESSARY APPROVED FIELD REVISIONS TO CORRECT ANY ERRORS OR OMISSIONS FOUND ON THE APPROVED PLAN.	

11-0208

DRAWING NO.
59 OF 72

TP1

PROJECT NAME
**EAST LAKE SAMMAMISH
MASTER PLAN TRAIL, REDMOND SEGMENT**
187TH AVENUE NE TO NE 70TH STREET

TREE PRESERVATION PLAN

Parametrix
ENGINEERING . PLANNING . ENVIRONMENTAL SCIENCES
411 108TH AVENUE N.E., SUITE 1800
BELLEVUE, WASHINGTON 98004
T. 425.458.6200 F. 425.458.6303
www.parametrix.com



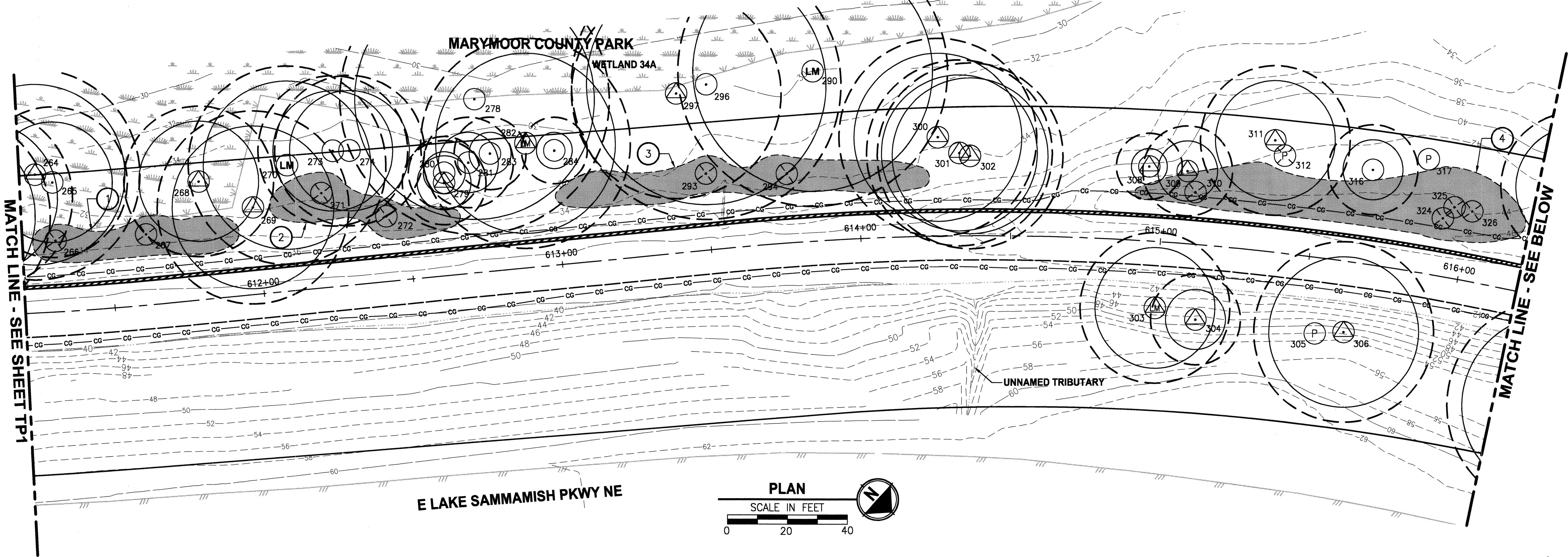
ONE INCH AT FULL SCALE.
IF NOT, SCALE ACCORDINGLY
FILE NAME
BL1521075P12T01TP1-7
JOB NO.
554-1521-075
DATE
DECEMBER 2010

DESIGNED
J. SWENSON
DRAWN
B. PURGANAN
CHECKED
H. LONGFELLOW
APPROVED

REVISIONS	DATE	BY

DATE: Dec 17, 2010 - 3:24pm PLOTTED BY: purgobut XREFS: XBL1521075P12T01-1bik | XBL1521075P12T01-DE | XBL1521075P12T01-BA-North | XBL1521075P12T01-GS LINES | XBL1521075P12T01-EX | XBL1521075P12T01-SHT-LAYOUT | XBL1521075P12T01-BA520

SEC'S 7,18, TWP. 25 N., RGE. 06 E and SEC. 12, TWP. 25 N., RGE. 05 E.



LEGEND:

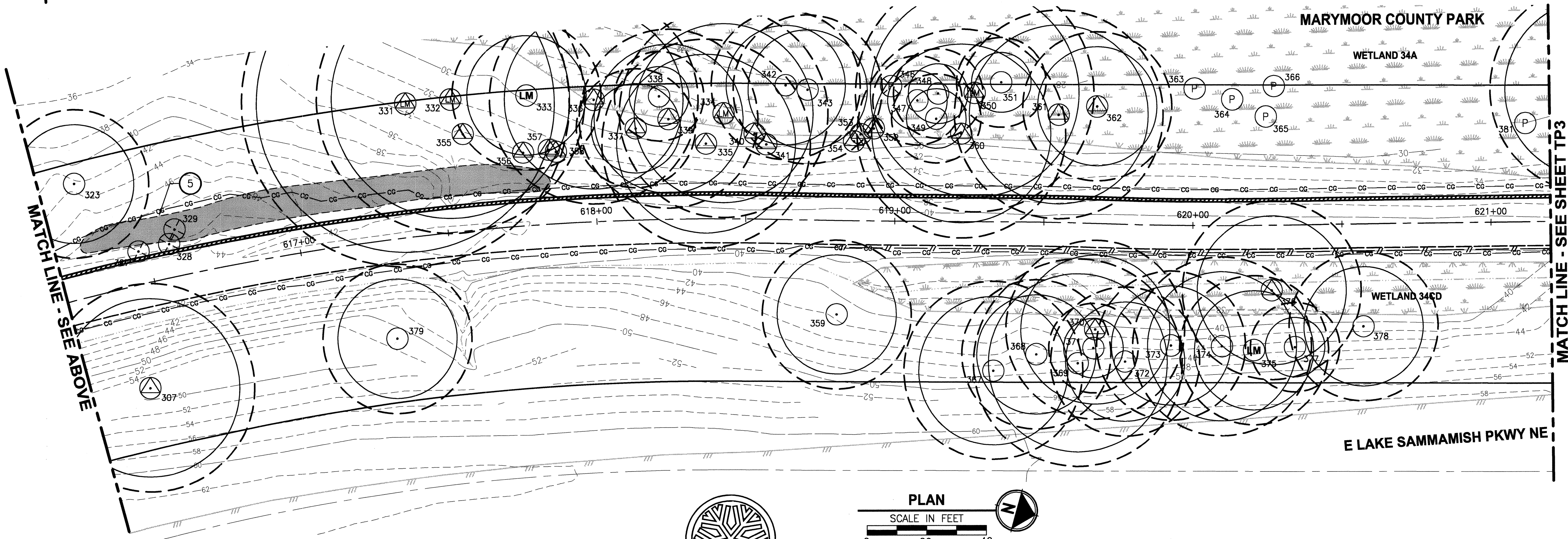
- (P) UNHEALTHY (POOR) TREE TO BE REMOVED
- (P) UNHEALTHY (POOR) TREE TO REMAIN
- (X) SIGNIFICANT TREE TO BE REMOVED
- (LM) LANDMARK TREE TO BE SAVED
- (LM) LANDMARK TREE TO BE IMPACTED
- (X) SIGNIFICANT TREE TO BE IMPACTED
- (X) SIGNIFICANT TREE TO BE SAVED (NO INCURSION IN THE DRIPLINE PLUS 5 FEET BEYOND IT)

- () DRIPLINE
- () DRIPLINE PLUS 5'

- * TREES LESS THAN 6" IN DIAMETER ARE NOT SHOWN.
- * SEE SHEET TP12 FOR PLANT LIST AND DETAILS.
- * LANDSCAPE ARCHITECT TO STAKE LOCATIONS FOR PLANTING IN FIELD.
- () AREA FOR PLANTING REPLACEMENT.

PLANTING REPLACEMENT NOTES:

- 1 PLANT 3 OREGON ASH AND 3 BIG LEAF MAPLE IN THIS AREA.
- 2 PLANT 3 BIG-LEAF MAPLE IN THIS AREA.
- 3 PLANT 4 OREGON ASH IN THIS AREA.
- 4 PLANT 7 BIG-LEAF MAPLE IN THIS AREA.
- 5 PLANT 7 BIG-LEAF MAPLES AND 2 DOUGLAS FIR IN THIS AREA.



THIS DEVELOPMENT SHALL BE CONSTRUCTED IN ACCORDANCE WITH THE CITY OF REDMOND STANDARD SPECIFICATIONS AND DETAILS, 2011 EDITION

APPROVED FOR CONSTRUCTION	PLAN CHK ENGR. <i>N/A</i>
FOR: WILLIAM J. CAMPBELL DIRECTOR OF PUBLIC WORKS CITY OF REDMOND	STORM <i>N/A</i>
	UTILITY <i>N/A</i>
	FIRE DEPT. <i>N/A</i>
	TRANS / ENGR. <i>N/A</i>
DATE: _____	PLANNING DEPT. <i>Relay Sign 1/4/11</i>

THIS APPROVAL IS FOR THE DESIGN CONCEPT ONLY. THESE PLANS APPEAR TO BE IN CONFORMANCE WITH THE CITY OF REDMOND DESIGN STANDARDS FOR CONSTRUCTION. THIS APPROVAL SHALL NOT BE CONSTRUED AS AUTHORIZING CONSTRUCTION NOT IN ACCORDANCE WITH APPLICABLE CITY STANDARDS. THE CITY RESERVES THE RIGHT TO REQUIRE REVISIONS TO THE APPROVED PLANS TO ASSURE CONFORMANCE WITH CITY OF REDMOND DESIGN STANDARDS FOR CONSTRUCTION AT ANY TIME THAT IT IS DISCOVERED THAT THE PROPOSED CONSTRUCTION DOES NOT OTHERWISE MEET THE APPLICABLE CONSTRUCTION STANDARDS. THE OWNER IS REQUIRED TO PROVIDE DESIGN AND PLANS IN ACCORDANCE WITH APPLICABLE CITY STANDARDS AND ASSURES THAT CONSTRUCTION IS ACCOMPLISHED IN ACCORDANCE WITH THOSE STANDARDS. THE OWNER AND/OR DESIGN ENGINEER AND/OR DEVELOPER MAY BE REQUIRED TO MAKE NECESSARY APPROVED FIELD REVISIONS TO CORRECT ANY ERRORS OR OMISSIONS FOUND ON THE APPROVED PLAN.

REVISIONS	DATE	BY	DESIGNED
△			J. SWENSON
			B. PURGANAN
			H. LONGFELLOW
			APPROVED

ONE INCH AT FULL SCALE.
IF NOT, SCALE ACCORDINGLY
FILE NAME
BL1521075P12T01TP1-7
JOB NO.
554-1521-075
DATE
DECEMBER 2010



Parametrix
ENGINEERING . PLANNING . ENVIRONMENTAL SCIENCES
411 108TH AVENUE N.E., SUITE 1800
BELLEVUE, WASHINGTON 98004
T: 425-458-6200 F: 425-458-6363
www.parametrix.com

PROJECT NAME
**EAST LAKE SAMMAMISH
MASTER PLAN TRAIL, REDMOND SEGMENT**
187TH AVENUE NE TO NE 70TH STREET

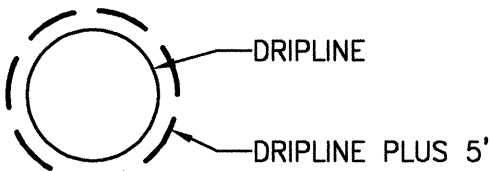
TREE PRESERVATION PLAN

DRAWING NO.
60 OF 72
TP2

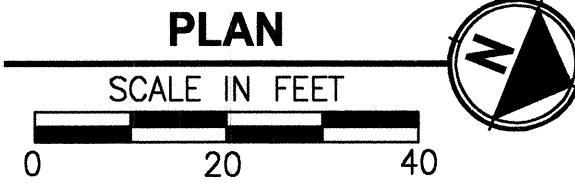
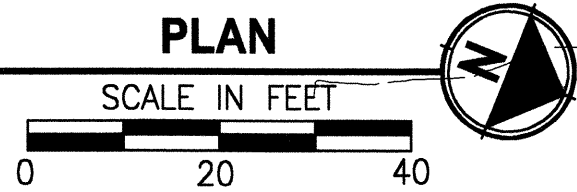
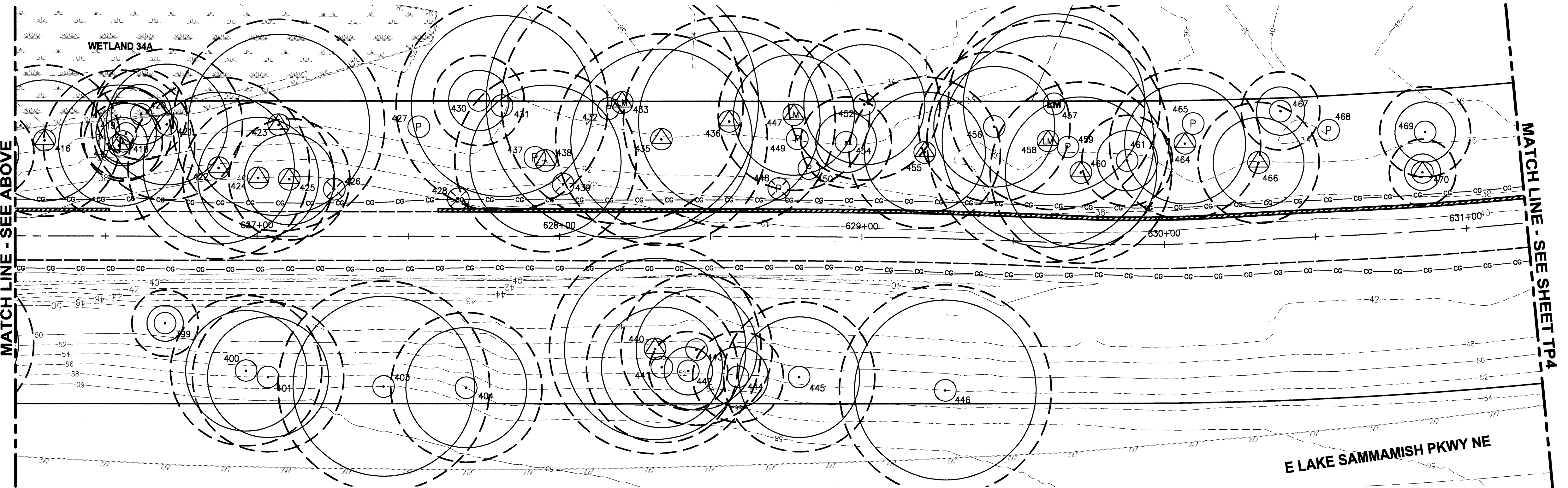
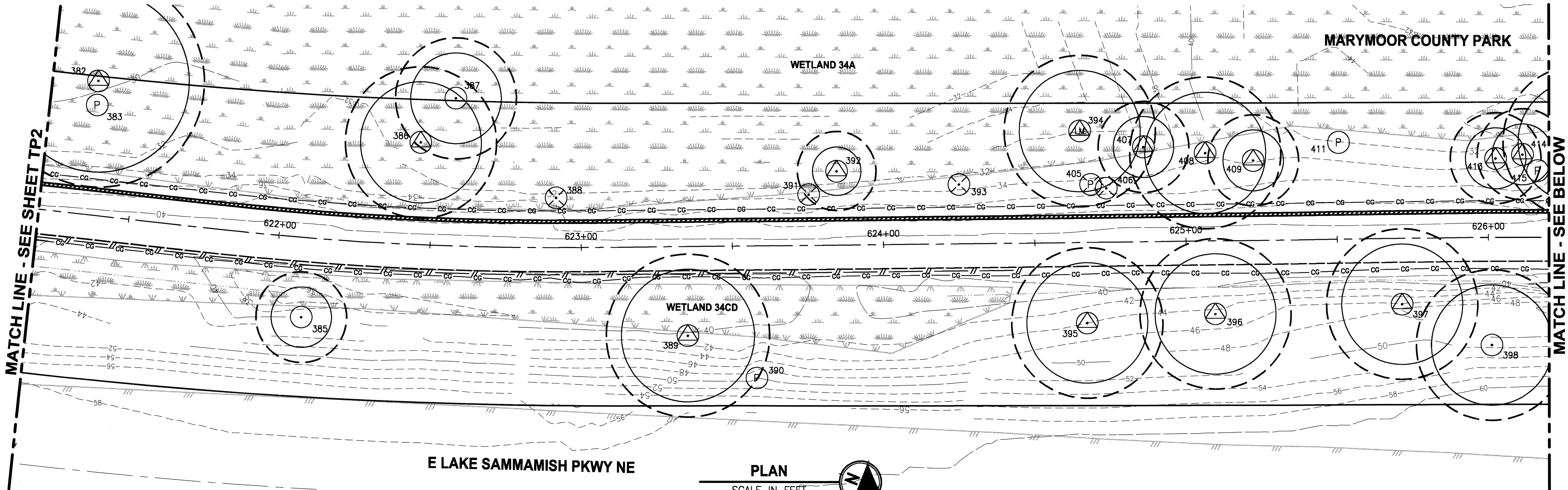
11-0209

LEGEND:

- (P) UNHEALTHY (POOR) TREE TO BE REMOVED
- (P) UNHEALTHY (POOR) TREE TO REMAIN
- (X) SIGNIFICANT TREE TO BE REMOVED
- (LM) LANDMARK TREE TO BE SAVED
- (LM) LANDMARK TREE TO BE IMPACTED
- (X) SIGNIFICANT TREE TO BE IMPACTED
- (X) SIGNIFICANT TREE TO BE SAVED (NO INCURSION IN THE DRIPLINE PLUS 5 FEET BEYOND IT)



- * TREES LESS THAN 6" IN DIAMETER ARE NOT SHOWN.
- * SEE SHEET TP12 FOR PLANT LIST AND DETAILS.
- * LANDSCAPE ARCHITECT TO STAKE LOCATIONS FOR PLANTING IN FIELD.
- AREA FOR PLANTING REPLACEMENT.



THIS DEVELOPMENT SHALL BE CONSTRUCTED IN ACCORDANCE WITH THE CITY OF REDMOND STANDARD SPECIFICATIONS AND DETAILS, 2011 EDITION

APPROVED FOR CONSTRUCTION	PLAN CHK ENGR <i>N/A</i>
FOR: WILLIAM J. CAMPBELL	STORM <i>N/A</i>
DIRECTOR OF PUBLIC WORKS	UTILITY <i>NA</i>
CITY OF REDMOND	FIRE DEPT <i>NA</i>
	TRANS / ENGR <i>NA</i>
DATE:	PLANNING DEPT <i>NA</i>

THIS APPROVAL IS FOR THE DESIGN CONCEPT ONLY. THESE PLANS APPEAR TO BE IN CONFORMANCE WITH THE CITY OF REDMOND DESIGN STANDARDS FOR CONSTRUCTION. THIS APPROVAL SHALL NOT BE CONSTRUED AS AUTHORIZING CONSTRUCTION NOT IN ACCORDANCE WITH APPLICABLE CITY STANDARDS. THE CITY RESERVES THE RIGHT TO REQUIRE REVISIONS TO THE APPROVED PLANS TO ASSURE CONFORMANCE WITH CITY OF REDMOND DESIGN STANDARDS FOR CONSTRUCTION AT ANY TIME THAT IT IS DISCOVERED THAT THE PROPOSED CONSTRUCTION DOES NOT OTHERWISE MEET THE APPLICABLE CONSTRUCTION STANDARDS. THE OWNER IS REQUIRED TO PROVIDE DESIGNS AND PLANS IN ACCORDANCE WITH APPLICABLE CITY STANDARDS AND ASSURES THAT CONSTRUCTION IS ACCOMPLISHED IN ACCORDANCE WITH THOSE STANDARDS. THE OWNER AND/OR DESIGN ENGINEER AND/OR DEVELOPER MAY BE REQUIRED TO MAKE NECESSARY APPROVED FIELD REVISIONS TO CORRECT ANY ERRORS OR OMISSIONS FOUND ON THE APPROVED PLAN.

REVISIONS	DATE	BY	DESIGNED
			J. SWENSON
			DRAWN
			B. PURGANAN
			CHECKED
			H. LONGFELLOW
			APPROVED

ONE INCH AT FULL SCALE.
IF NOT, SCALE ACCORDINGLY
FILE NAME
BL1521075P12T01TP1-7
JOB No.
554-1521-075
DATE
DECEMBER 2010



Parametrix
ENGINEERING . PLANNING . ENVIRONMENTAL SCIENCES
411 108TH AVENUE N.E., SUITE 1800
BELLEVUE, WASHINGTON 98004
T. 425.458.5200 F. 425.458.6963
www.parametrix.com

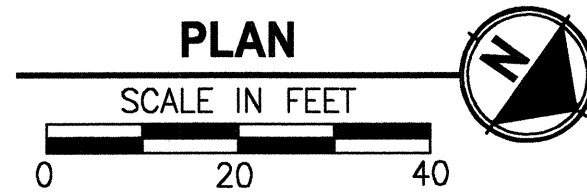
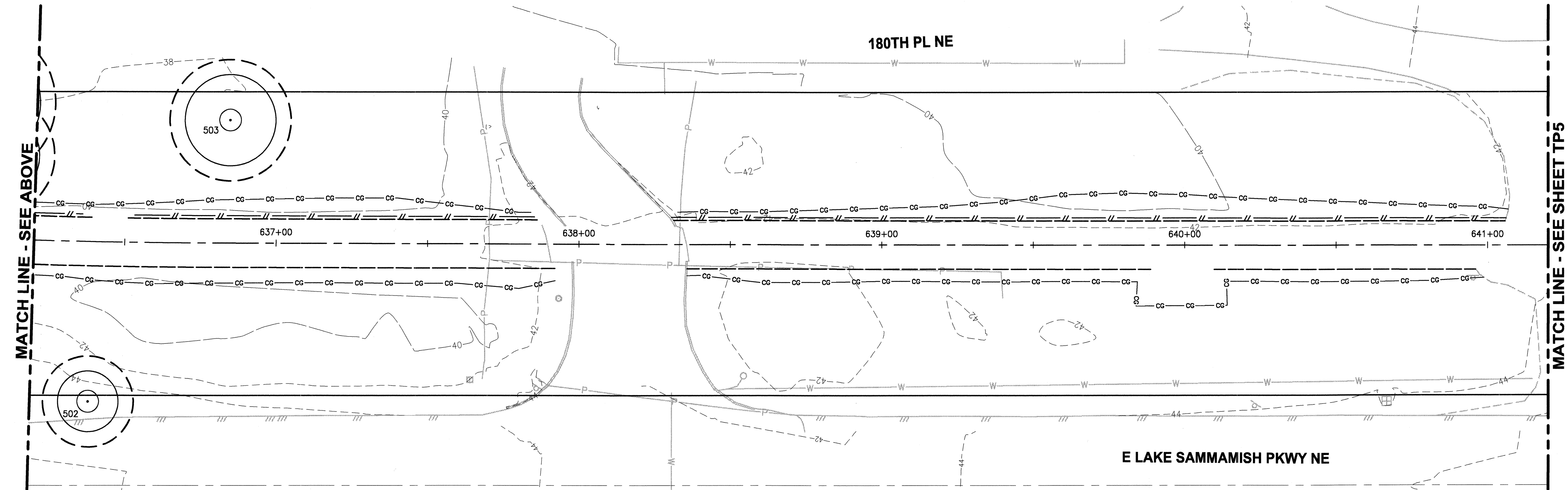
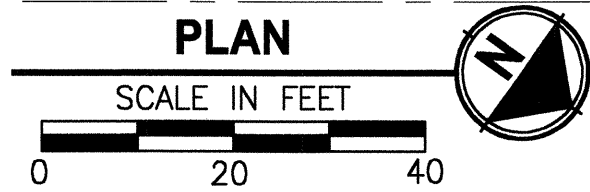
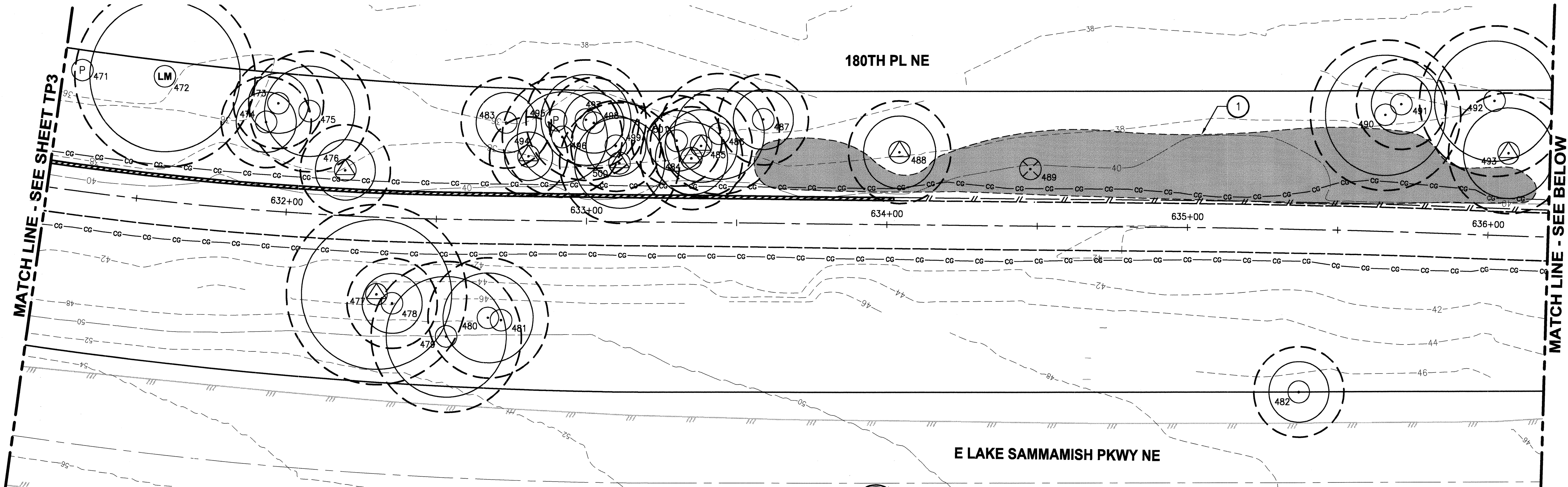
PROJECT NAME
**EAST LAKE SAMMAMISH
MASTER PLAN TRAIL, REDMOND SEGMENT**
187TH AVENUE NE TO NE 70TH STREET

TREE PRESERVATION PLAN

DRAWING NO.
61 OF 72
TP3

DATE: Dec 17, 2010 - 3:25pm PLOTTED BY: purgobut IMAGES: XREFS: XBL1521075P12T01-BA-North | XBL1521075P12T01-DE | XBL1521075P12T01-EX | XBL1521075P12T01-GS LINES | XBL1521075P12T01-SHT-LAYOUT | XBL1521075P12T01-SHT-TP12-BA-North | XBL1521075P12T01-SHT-TP12-BA-North | XBL1521075P12T01-SHT-TP12-BA-North | XBL1521075P12T01-SHT-TP12-BA-North

SEC'S 7,18, TWP. 25 N., RGE. 06 E and SEC. 12, TWP. 25 N., RGE. 05 E.



LEGEND:

- UNHEALTHY (POOR) TREE TO BE REMOVED
- UNHEALTHY (POOR) TREE TO REMAIN
- SIGNIFICANT TREE TO BE REMOVED
- LANDMARK TREE TO BE SAVED
- LANDMARK TREE TO BE IMPACTED
- SIGNIFICANT TREE TO BE IMPACTED
- SIGNIFICANT TREE TO BE SAVED (NO INCURSION IN THE DRIPLINE PLUS 5 FEET BEYOND IT)

- DRIPLINE
- DRIPLINE PLUS 5'

- * TREES LESS THAN 6" IN DIAMETER ARE NOT SHOWN.
- * SEE SHEET TP12 FOR PLANT LIST AND DETAILS.
- * LANDSCAPE ARCHITECT TO STAKE LOCATIONS FOR PLANTING IN FIELD.

AREA FOR PLANTING REPLACEMENT.

PLANTING REPLACEMENT NOTES:

- 1 PLANT 7 BIG-LEAF MAPLES AND 2 OREGON ASH AND 2 DOUGLAS FIR IN THIS AREA.

THIS DEVELOPMENT SHALL BE CONSTRUCTED IN ACCORDANCE WITH THE CITY OF REDMOND STANDARD SPECIFICATIONS AND DETAILS, 2011 EDITION

APPROVED FOR CONSTRUCTION	PLAN CHK ENGR. <u>N/A</u>
FOR: WILLIAM J. CAMPBELL DIRECTOR OF PUBLIC WORKS CITY OF REDMOND	STORM <u>N/A</u> UTILITY <u>N/A</u> FIRE DEPT <u>N/A</u> TRANS / ENGR <u>N/A</u> PLANNING DEPT <u>N/A</u>
DATE: _____	

THIS APPROVAL IS FOR THE DESIGN CONCEPT ONLY. THESE PLANS APPEAR TO BE IN CONFORMANCE WITH THE CITY OF REDMOND DESIGN STANDARDS FOR CONSTRUCTION. THIS APPROVAL SHALL NOT BE CONSTRUED AS AUTHORIZING CONSTRUCTION NOT IN ACCORDANCE WITH APPLICABLE CITY STANDARDS. THE CITY RESERVES THE RIGHT TO REQUIRE PERSONS TO THE APPROVED PLANS TO ASSURE CONFORMANCE WITH CITY OF REDMOND DESIGN STANDARDS FOR CONSTRUCTION AT ANY TIME THAT IT IS DISCOVERED THAT THE PROPOSED CONSTRUCTION DOES NOT OTHERWISE MEET THE APPLICABLE CONSTRUCTION STANDARDS. THE OWNER IS REQUIRED TO PROVIDE DESIGNS AND PLANS IN ACCORDANCE WITH APPLICABLE CITY STANDARDS AND ASSURES THAT CONSTRUCTION IS ACCOMPLISHED IN ACCORDANCE WITH THOSE STANDARDS. THE OWNER AND/OR DESIGN ENGINEER AND/OR DEVELOPER MAY BE REQUIRED TO MAKE NECESSARY APPROVED FIELD REVISIONS TO CORRECT ANY ERRORS OR OMISSIONS FOUND ON THE APPROVED PLAN.

11-0211

REVISIONS	DATE	BY	DESIGNED
			J. SWENSON
			DRAWN B. PURGANAN
			CHECKED H. LONGFELLOW
			APPROVED

ONE INCH AT FULL SCALE.
IF NOT, SCALE ACCORDINGLY
FILE NAME
BL1521075P12T01TP1-7
JOB No.
554-1521-075
DATE
DECEMBER 2010



Parametrix
ENGINEERING . PLANNING . ENVIRONMENTAL SCIENCES
411 118TH AVENUE N.E., SUITE 1800
BELLEVUE, WASHINGTON 98004
T. 425.458.6200 F. 425.458.6363
www.parametrix.com

PROJECT NAME
**EAST LAKE SAMMAMISH
MASTER PLAN TRAIL, REDMOND SEGMENT**
187TH AVENUE NE TO NE 70TH STREET

TREE PRESERVATION PLAN

DRAWING NO.
62 OF 72
TP4

SEC'S 7,18, TWP. 25 N., RGE. 06 E and SEC. 12, TWP. 25 N., RGE. 05 E.

MATCH LINE - SEE SHEET TP4

MATCH LINE - SEE BELOW

E LAKE SAMMAMISH PKWY NE

PLAN

SCALE IN FEET

0 20 40



MATCH LINE - SEE ABOVE

MATCH LINE - SEE SHEET TP6

PLAN

SCALE IN FEET

0 20 40



LEGEND:

- UNHEALTHY (POOR) TREE TO BE REMOVED
- UNHEALTHY (POOR) TREE TO REMAIN
- SIGNIFICANT TREE TO BE REMOVED
- LANDMARK TREE TO BE SAVED
- LANDMARK TREE TO BE IMPACTED
- SIGNIFICANT TREE TO BE IMPACTED
- SIGNIFICANT TREE TO BE SAVED (NO INCURSION IN THE DRIPLINE PLUS 5 FEET BEYOND IT)

- DRIPLINE
- DRIPLINE PLUS 5'

- * TREES LESS THAN 6" IN DIAMETER ARE NOT SHOWN.
- * SEE SHEET TP12 FOR PLANT LIST AND DETAILS.
- * LANDSCAPE ARCHITECT TO STAKE LOCATIONS FOR PLANTING IN FIELD.

AREA FOR PLANTING REPLACEMENT.

THIS DEVELOPMENT SHALL BE CONSTRUCTED IN ACCORDANCE WITH THE CITY OF REDMOND STANDARD SPECIFICATIONS AND DETAILS, 2011 EDITION.

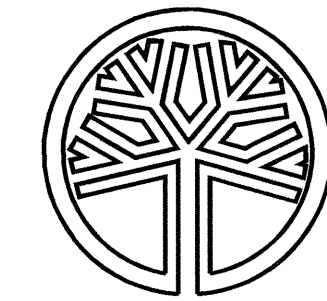
APPROVED FOR CONSTRUCTION	PLAN CHK ENGR. <u>N/A</u>
FOR: WILLIAM J. CAMPBELL	STORM <u>N/A</u>
DIRECTOR OF PUBLIC WORKS	UTILITY <u>NA</u>
CITY OF REDMOND	FIRE DEPT <u>NA</u>
	TRANS / ENGR <u>NA</u>
DATE: _____	PLANNING DEPT. <u>Kelley Jones 1-14-11</u>

THIS APPROVAL IS FOR THE DESIGN CONCEPT ONLY. THESE PLANS APPEAR TO BE IN CONFORMANCE WITH THE CITY OF REDMOND DESIGN STANDARDS FOR CONSTRUCTION. THIS APPROVAL SHALL NOT BE CONSTRUED AS AUTHORIZING CONSTRUCTION NOT IN ACCORDANCE WITH APPLICABLE CITY STANDARDS. THE CITY RESERVES THE RIGHT TO REQUIRE REVISIONS TO THE APPROVED PLANS TO ASSURE CONFORMANCE WITH CITY OF REDMOND DESIGN STANDARDS FOR CONSTRUCTION AT ANY TIME THAT IT IS DISCOVERED THAT THE PROPOSED CONSTRUCTION DOES NOT OTHERWISE MEET THE APPLICABLE CONSTRUCTION STANDARDS. THE OWNER IS REQUIRED TO PROVIDE DESIGNS AND PLANS IN ACCORDANCE WITH APPLICABLE CITY STANDARDS AND ASSURES THAT CONSTRUCTION IS ACCOMPLISHED IN ACCORDANCE WITH THESE STANDARDS. THE OWNER AND/OR DESIGN ENGINEER AND/OR DEVELOPER MAY BE REQUIRED TO MAKE NECESSARY APPROVED FIELD REVISIONS TO CORRECT ANY ERRORS OR OMISSIONS FOUND ON THE APPROVED PLAN.

11-0212

REVISIONS	DATE	BY	DESIGNED
			J. SWENSON
			DRAWN
			B. PURGANAN
			CHECKED
			H. LONGFELLOW
			APPROVED

ONE INCH AT FULL SCALE,
IF NOT, SCALE ACCORDINGLY
FILE NAME
BL1521075P12T01TP1-7
JOB No.
554-1521-075
DATE
DECEMBER 2010



STATE OF WASHINGTON
REGISTERED
LANDSCAPE ARCHITECT
JENS SWENSON
CERTIFICATE NO. 656

Parametrix

ENGINEERING . PLANNING . ENVIRONMENTAL SCIENCES

411 108TH AVENUE N.E., SUITE 1800
BELLEVUE, WASHINGTON 98004
T. 425.458.8200 F. 425.458.6363
www.parametrix.com

PROJECT NAME

EAST LAKE SAMMAMISH
MASTER PLAN TRAIL, REDMOND SEGMENT

187TH AVENUE NE TO NE 70TH STREET








TREE PRESERVATION PLAN

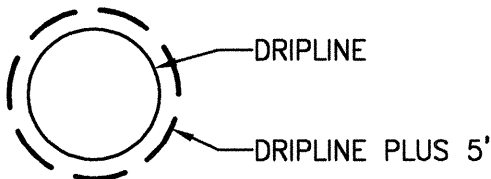
DRAWING NO.
63 OF 72

TP5

SEC'S 7,18, TWP. 25 N., RGE. 06 E and SEC. 12, TWP. 25 N., RGE. 05 E.

LEGEND:

-  UNHEALTHY (POOR) TREE TO BE REMOVED
-  UNHEALTHY (POOR) TREE TO REMAIN
-  SIGNIFICANT TREE TO BE REMOVED
-  LANDMARK TREE TO BE SAVED
-  LANDMARK TREE TO BE IMPACTED
-  SIGNIFICANT TREE TO BE IMPACTED
-  SIGNIFICANT TREE TO BE SAVED (NO INCURSION IN THE DRIPLINE PLUS 5 FEET BEYOND IT)



- * TREES LESS THAN 6" IN DIAMETER ARE NOT SHOWN.
- * SEE SHEET TP12 FOR PLANT LIST AND DETAILS.
- * LANDSCAPE ARCHITECT TO STAKE LOCATIONS FOR PLANTING IN FIELD.

AREA FOR PLANTING REPLACEMENT.

PLANTING REPLACEMENT NOTES:

- 1 PLANT 3 DOUGLAS FIR AND 9 MAPLES IN THIS AREA.
- 2 PLANT 2 BIG LEAF MAPLE IN THIS AREA.
- 3 PLANT 7 OREGON ASH AND SPACE TREES 35' O.C. IN THIS AREA.
- 4 PLANT 3 OREGON ASH AND SPACE TREES 35' O.C. IN THIS AREA.
- 5 PLANT 6 DOUGLAS FIR AND SPACE TREES 35' O.C. IN THIS AREA.

THIS DEVELOPMENT SHALL BE CONSTRUCTED IN ACCORDANCE WITH THE CITY OF REDMOND STANDARD SPECIFICATIONS AND DETAILS, 2011 EDITION.

APPROVED FOR CONSTRUCTION	PLAN CHK ENGR <i>N/A</i>
FOR: WILLIAM J. CAMPBELL DIRECTOR OF PUBLIC WORKS CITY OF REDMOND	STORM <i>N/A</i> UTILITY <i>N/A</i> FIRE DEPT <i>N/A</i> TRANS / ENGR <i>N/A</i> PLANNING DEPT. <i>Kenny Spill 11/11/11</i>
DATE: _____	
THIS APPROVAL IS FOR THE DESIGN CONCEPT ONLY. THESE PLANS APPEAR TO BE IN CONFORMANCE WITH THE CITY OF REDMOND DESIGN STANDARDS FOR CONSTRUCTION. THIS APPROVAL SHALL NOT BE CONSTRUED AS AUTHORIZING CONSTRUCTION NOT IN ACCORDANCE WITH APPLICABLE CITY STANDARDS. THE CITY RESERVES THE RIGHT TO REQUIRE REVISIONS TO THE APPROVED PLANS TO ASSURE CONFORMANCE WITH CITY OF REDMOND DESIGN STANDARDS FOR CONSTRUCTION AT ANY TIME THAT IT IS DISCOVERED THAT THE PROPOSED CONSTRUCTION DOES NOT OTHERWISE MEET THE APPLICABLE CONSTRUCTION STANDARDS. THE OWNER IS REQUIRED TO PROVIDE DESIGNS AND PLANS IN ACCORDANCE WITH APPLICABLE CITY STANDARDS AND ASSURES THAT CONSTRUCTION IS ACCOMPLISHED IN ACCORDANCE WITH THOSE STANDARDS. THE OWNER AND/OR DESIGN ENGINEER AND/OR DEVELOPER MAY BE REQUIRED TO MAKE NECESSARY APPROVED FIELD REVISIONS TO CORRECT ANY ERRORS OR OMISSIONS FOUND ON THE APPROVED PLAN.	

11-0213

DRAWING NO.
64 OF 72

TP6

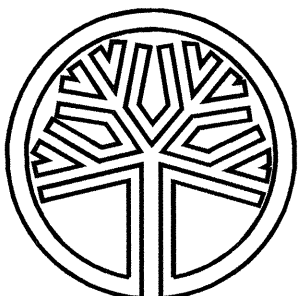
PROJECT NAME
**EAST LAKE SAMMAMISH
MASTER PLAN TRAIL, REDMOND SEGMENT**
187TH AVENUE NE TO NE 70TH STREET

TREE PRESERVATION PLAN

Parametrix

411 108TH AVENUE N.E., SUITE 1800
BELLEVUE, WASHINGTON 98004
T. 425.458.8200 F. 425.458.6363
www.parametrix.com

ENGINEERING, PLANNING, ENVIRONMENTAL SCIENCES



STATE OF WASHINGTON
REGISTERED
LANDSCAPE ARCHITECT
Jens Swenson
JENS SWENSON
CERTIFICATE NO. 656

ONE INCH AT FULL SCALE.
IF NOT, SCALE ACCORDINGLY.
FILE NAME
BL1521075P12T01TP1-7
JOB NO.
554-1521-075
DATE
DECEMBER 2010

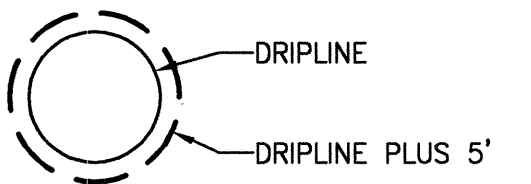
DESIGNED
J. SWENSON
DRAWN
B. PURGANAN
CHECKED
H. LONGFELLOW
APPROVED

REVISIONS	DATE	BY

SEC'S 7,18, TWP. 25 N., RGE. 06 E and SEC. 12, TWP. 25 N., RGE. 05 E.

LEGEND:

- UNHEALTHY (POOR) TREE TO BE REMOVED
- UNHEALTHY (POOR) TREE TO REMAIN
- SIGNIFICANT TREE TO BE REMOVED
- LANDMARK TREE TO BE SAVED
- LANDMARK TREE TO BE IMPACTED
- SIGNIFICANT TREE TO BE IMPACTED
- SIGNIFICANT TREE TO BE SAVED (NO INCURSION IN THE DRIPLINE PLUS 5 FEET BEYOND IT)

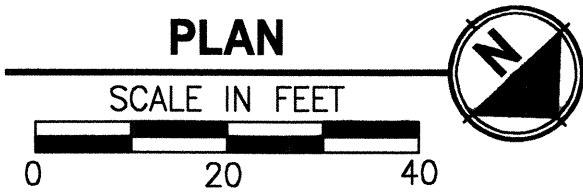
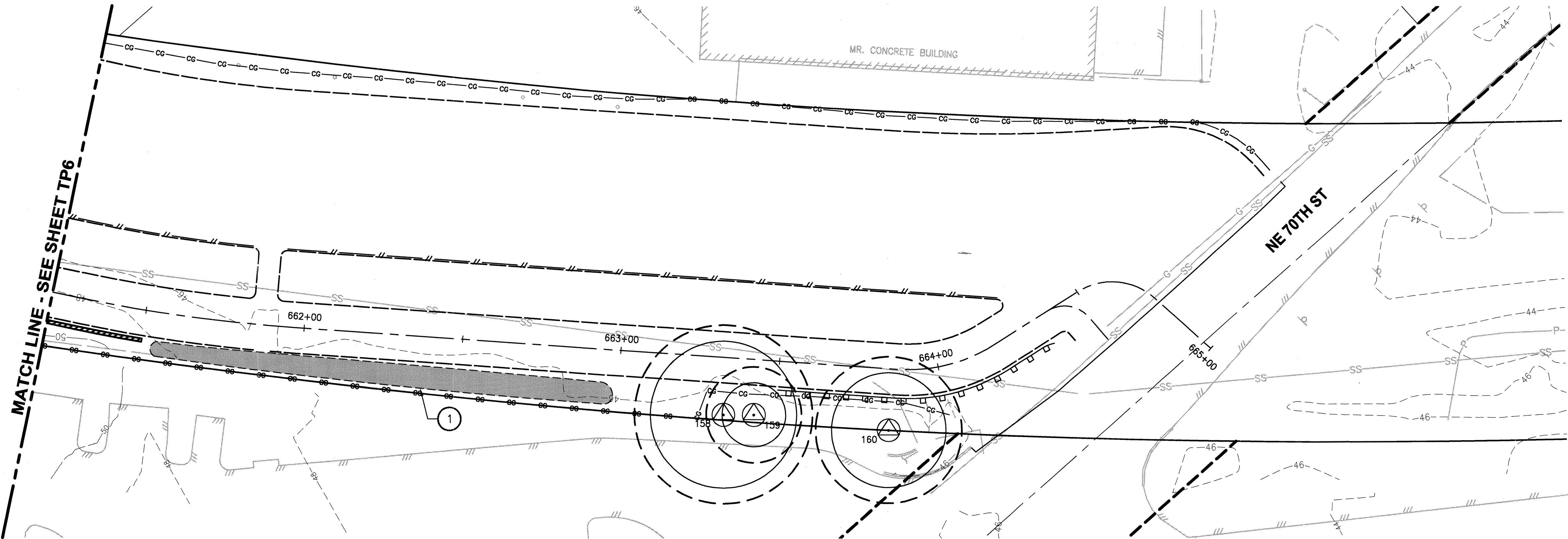


- * TREES LESS THAN 6" IN DIAMETER ARE NOT SHOWN.
- * SEE SHEET TP12 FOR PLANT LIST AND DETAILS.
- * LANDSCAPE ARCHITECT TO STAKE LOCATIONS FOR PLANTING IN FIELD.

AREA FOR PLANTING REPLACEMENT.

PLANTING REPLACEMENT NOTES:

- 1 PLANT 5 DOUGLAS FIR SPACE TREES 35' O.C. IN THIS AREA.



THIS DEVELOPMENT SHALL BE CONSTRUCTED IN ACCORDANCE WITH THE CITY OF REDMOND STANDARD SPECIFICATIONS AND DETAILS, 2011 EDITION

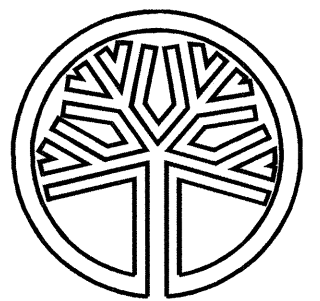
APPROVED FOR CONSTRUCTION	PLAN CHK ENGR. <u>N/A</u>
FOR: WILLIAM J. CAMPBELL	STORM <u>N/A</u>
DIRECTOR OF PUBLIC WORKS	UTILITY <u>N/A</u>
CITY OF REDMOND	FIRE DEPT. <u>N/A</u>
	TRANS / ENGR. <u>N/A</u>
DATE: <u>11-14-11</u>	PLANNING DEPT. <u>King John 11-14-11</u>

THIS APPROVAL IS FOR THE DESIGN CONCEPT ONLY. THESE PLANS APPEAR TO BE IN CONFORMANCE WITH THE CITY OF REDMOND DESIGN STANDARDS FOR CONSTRUCTION. THIS APPROVAL SHALL NOT BE CONSTRUED AS AUTHORIZING CONSTRUCTION NOT IN ACCORDANCE WITH APPLICABLE CITY STANDARDS. THE CITY RESERVES THE RIGHT TO REQUIRE REVISIONS TO THE APPROVED PLANS TO ASSURE CONFORMANCE WITH CITY OF REDMOND DESIGN STANDARDS FOR CONSTRUCTION AT ANY TIME THAT IT IS DISCOVERED THAT THE PROPOSED CONSTRUCTION DOES NOT OTHERWISE MEET THE APPLICABLE CONSTRUCTION STANDARDS. THE OWNER IS REQUIRED TO PROVIDE DESIGNS AND PLANS IN ACCORDANCE WITH APPLICABLE CITY STANDARDS AND ASSURES THAT CONSTRUCTION IS ACCOMPLISHED IN ACCORDANCE WITH THOSE STANDARDS. THE OWNER AND/OR DESIGN ENGINEER AND/OR DEVELOPER MAY BE REQUIRED TO MAKE NECESSARY APPROVED FIELD REVISIONS TO CORRECT ANY ERRORS OR OMISSIONS FOUND ON THE APPROVED PLAN.

11-0214

REVISIONS	DATE	BY	DESIGNED
			J. SWENSON
			DRAWN
			B. PURGANAN
			CHECKED
			H. LONGFELLOW
			APPROVED

ONE INCH AT FULL SCALE.
IF NOT, SCALE ACCORDINGLY
FILE NAME
BL1521075P12T01TP1-7
JOB No.
554-1521-075
DATE
DECEMBER 2010



STATE OF WASHINGTON
REGISTERED
LANDSCAPE ARCHITECT
JENS SWENSON
CERTIFICATE NO. 656

Parametrix
ENGINEERING . PLANNING . ENVIRONMENTAL SCIENCES
411 108TH AVENUE N.E., SUITE 1800
BELLEVUE, WASHINGTON 98004
T. 425.458.8200 F. 425.458.6363
www.parametrix.com

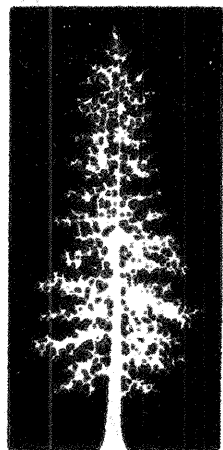
PROJECT NAME
EAST LAKE SAMMAMISH
MASTER PLAN TRAIL, REDMOND SEGMENT
187TH AVENUE NE TO NE 70TH STREET

TREE PRESERVATION PLAN

DRAWING NO.
65 OF 72

TP7

DATE: Dec 20, 2010 - 9:43am PLOTTED BY: purgbut IMAGES: Tree Inventory & Report 1 of 4 | Tree Inventory & Report 2 of 4 | Tree Inventory & Report 3 of 4 | Tree Inventory & Report 4 of 4 | XREF: S: XBL1521075P12T01TP8-12



Northwest Arborvitae

Tina Cohen
Certified Arborist
8318 26th Ave. NW • Seattle, WA 98117
206-789-3283 • fax 206-789-0262

December 13, 2008

Jenny Bailey
Parametrix
411 108th Ave NE, Suite 1800
Bellevue, WA 98004-5571

Site: East Lake Sammamish Trail, Redmond WA
Arborist Services: Tree Inventory & Report

Dear Ms. Bailey:

On September 26 through October 5, 2008 I inventoried the trees within the King County right of way in anticipation of improvements to the East Lake Sammamish Trail. After the initial design was revised I returned to the site November 16 through 18, 2008 to note trees that changed their retention status. This report follows the "Guidelines for Demonstrating Conformance with Tree Protection Standards" issued by the City of Redmond. The Redmond formatted tree count is listed on page 3.

Redmond Code Definitions

- Significant tree: The trunk diameter is 6 inches or larger
- Landmark tree: The trunk diameter is greater than 30 inches
- Saved tree: A tree that will have NO clearing, grading or other activities within 5 feet of its dripline.
- Impacted tree: A tree that will have construction activities within 5 feet of its dripline.
- Removed tree: A tree that will totally removed for the construction project.

Methodology

Tree Number: I numbered the Significant and Landmark trees shown on the site plans starting with #101. Due to the density of stand, I first located the largest trees shown on the plans and then filled in the smaller trees around them. Trees less than 6 inches in diameter were not included. Unhealthy trees were numbered and shown on the spreadsheet, but were not included in the tree count.

The Redmond planner allowed this project to omit attaching numbered tags but I flagged some of the trees for ease of navigation.

There may be some discrepancies in the field because of the volume of trees and difficulty determining the extent of the right of way. Within two years many more trees will reach the Significant threshold.

Off site trees: The surveyors included some of the off site trees (beyond the right of way), but only the impacted off site trees were listed on the spreadsheet and shown on the site plans. There may be

additional off site trees on the Whole Foods property that will be impacted by the project. The saved off site trees were not included, which results in gaps in the numbering sequence.

Species: The majority of the trees are native, although there are some non-native species. The non-wetland species prefer a moist location and are seen at the edges of the wetland but will not tolerate standing water. Some wetland species will also tolerate drier conditions. Other species such as Vine maple and Western hazel were present but not included due to their size.

Non-wetland species

- Bigleaf maple, *Acer macrophyllum* (native)
- Hedge maple, *Acer campestre*
- Norway maple, *Acer platanoides*
- Red maple, *Acer rubrum*
- Birch, *Betula sp.*
- Pacific dogwood, *Cornus nuttali* (native)
- Austrian pine, *Pinus nigra*
- Aspen, *Populus tremuloides* (native)
- Cherry, *Prunus emarginata* (native)
- Douglas fir, *Pseudotsuga menziesii* (native)
- Cascara, *Rhamnus purshiana* (native)
- Western red cedar, *Thuja plicata* (native)

Wetland species

- Alder, *Alnus rubra* (native)
- Oregon ash, *Fraxinus latifolia* (native)
- Cottonwood, *Populus trichocarpa* (native)
- Willow, *Salix sp.* (native)

Trunk Diameter: The surveyors measured the trunks at 4.5 feet above the ground (standard height, also called DBH). This is also useful for future evaluations; an increase in diameter is one indication of vigor.

Dripline Radius: The dripline is the radius of the extent of a tree's canopy expressed in feet. Most of the large structural roots will be within the area calculated using this radius (PI x R squared). The dripline is used to determine the radius of the tree protection zone of dripline plus 5 feet.

This is not the same as 'canopy spread', which refers to the diameter of the entire canopy or double the dripline radius. Nurseries usually use canopy spread measurements to describe growth rate.

Health Rating: I used the standards established by the International Society of Arboriculture's Tree Hazard Evaluation Form and the Tree Condition Assessment Form for tree appraisals. Many trees in the wetland had broken branches or wounds, but I considered them viable unless they were in obvious decline. According to the Redmond planner, only trees that were deemed unhealthy or 'Poor' needed detailed information.

Site Overview

The inventoried area is adjacent to or within a designated wetland, and with few exceptions the all the trees are well adapted for this ecosystem. The trees are growing vigorously and there are many saplings (trees less than 6 inches in diameter) that will reach the Significant threshold in one to two years. Areas on the plans that look sparsely vegetated actually have large amounts of shrubs and/or saplings that provide excellent wildlife habitat.

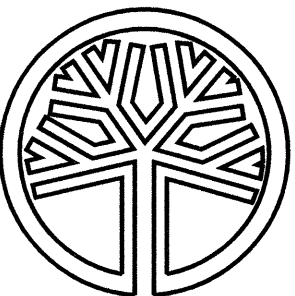
THIS DEVELOPMENT SHALL BE CONSTRUCTED IN ACCORDANCE WITH THE CITY OF REDMOND STANDARD SPECIFICATIONS AND DETAILS, 2011 EDITION

APPROVED FOR CONSTRUCTION	PLAN CHK ENR <i>N/A</i>
FOR: WILLIAM J. CAMPBELL DIRECTOR OF PUBLIC WORKS CITY OF REDMOND	STORM <i>N/A</i> UTILITY <i>N/A</i> FIRE DEPT <i>N/A</i> TRANS / ENR <i>N/A</i> PLANNING DEPT <i>Kenny Johnson</i>
DATE: _____	
THIS APPROVAL IS FOR THE DESIGN CONCEPT ONLY. THESE PLANS APPEAR TO BE IN CONFORMANCE WITH THE CITY OF REDMOND DESIGN STANDARDS FOR CONSTRUCTION. THIS APPROVAL SHALL NOT BE CONSTRUED AS AUTHORIZING CONSTRUCTION NOT IN ACCORDANCE WITH APPLICABLE CITY STANDARDS. THE CITY RESERVES THE RIGHT TO REQUIRE REVISIONS TO THE APPROVED PLANS TO ASSURE CONFORMANCE WITH CITY OF REDMOND DESIGN STANDARDS FOR CONSTRUCTION AT ANY TIME THAT IT IS DISCOVERED THAT THE PROPOSED CONSTRUCTION DOES NOT OTHERWISE MEET THE APPLICABLE CONSTRUCTION STANDARDS. THE OWNER IS REQUIRED TO PROVIDE DESIGNS AND PLANS IN ACCORDANCE WITH APPLICABLE CITY STANDARDS AND ASSURES THAT CONSTRUCTION IS ACCOMPLISHED IN ACCORDANCE WITH THESE STANDARDS. THE OWNER AND/OR DESIGN ENGINEER AND/OR DEVELOPER MAY BE REQUIRED TO MAKE NECESSARY APPROVED FIELD REVISIONS TO CORRECT ANY ERRORS OR OMISSIONS FOUND ON THE APPROVED PLAN.	

11-0215

REVISIONS	DATE	BY	DESIGNED
			J. SWENSON
			DRAWN
			B. PURGANAN
			CHECKED
			H. LONGFELLOW
			APPROVED

ONE INCH AT FULL SCALE. IF NOT, SCALE ACCORDINGLY
FILE NAME BL1521075P12T01TP8-12
JOB No. 554-1521-075
DATE DECEMBER 2010



STATE OF WASHINGTON
REGISTERED
LANDSCAPE ARCHITECT
Jens Swenson
CERTIFICATE NO. 656

Parametrix	ENGINEERING . PLANNING . ENVIRONMENTAL SCIENCES
411 108TH AVENUE N.E., SUITE 1800 BELLEVUE, WASHINGTON 98004 T: 425.458.6200 F: 425.458.6363 www.parametrix.com	

PROJECT NAME	EAST LAKE SAMMAMISH MASTER PLAN TRAIL, REDMOND SEGMENT
187TH AVENUE NE TO NE 70TH STREET	

TREE PRESERVATION NOTES AND DETAILS
--

DRAWING NO. 66 OF 72
TP8

DATE: Dec 20, 2010 - 9:46am PLOTTED BY: purgobut IMAGES: Tree Inventory & Report 1 of 4 | Tree Inventory & Report 2 of 4 | Tree Inventory & Report 3 of 4 | Tree Inventory & Report 4 of 4 | XREFS: XBL1521075P12T01-tpbk

- Invasive species are limited to Himalayan blackberry in areas where trees have failed and increased the available light.
- Wetland species such as Cottonwood and Oregon ash will only grow where there is ample water, but several have failed west of the trail in flooded areas. There has been decline of some the ashes due to storm damage and foliar leaf spot disease caused by *Mycosphaerella fraxinicola*. Other wetland species listed are thriving. Note wetland species will not tolerate a reduction in water and tend to be more sensitive to root loss.
- The Cottonwoods at the south end of the site, adjacent to privately owned land, were topped and/or excessively limbed up by the homeowners. The trees will be susceptible to decay associated with the cuts, therefore I designated them as Poor. King County may wish to mark the property lines in this area to prevent future damage to the County's trees.
- The non-wetland species are healthy, for example Douglas fir will tolerate high amounts of water if the area is well drained and doesn't experience standing water.
- The dead and dying trees provide important habitat, especially for nesting birds. Therefore unhealthy or hazard trees should remain unless a tree threatens the trail. This should be determined by the arborist, and management options such as shortening the overhanging limbs and cutting out dead wood are preferred over removal.

Findings

Please see the tree inventory spreadsheet for the health and retention status for each tree within the surveyed area.

Tree Count Summary

Landmark trees to be Saved = 5	Significant trees to be Saved = 98
Landmark trees to be Impacted = 24	Significant trees to be Impacted = 122
Landmark trees to be removed = 1	Significant trees to be removed = 61
Total healthy Landmark trees = 30	Total Significant trees = 281
Percent Landmark trees Saved = 16.7%	Percent Significant trees Saved = 35%
Percent Landmark trees Impacted = 80%	Percent Significant trees Impacted = 43%
Percent Landmark trees removed = 3.3%	Percent Significant trees removed = 22%

Replacement Trees

I understand the Redmond planner will determine the number of replacement trees, and then the landscape architect for Parametrix will indicate the species and locations.

Prognosis for Impacted Trees

The prognosis for each impacted tree is fair to good. If I felt the prognosis would be poor or could result in a hazard condition, I designated the tree to be removed. Future vigor will depend upon construction specifications that include providing a fenced tree protection zone and root pruning during site preparation.

Exception Request for Removing a Landmark Tree

The Landmark Bigleaf maple #388 must be removed due to design constraints so the trail can be widened at this location.

Exception Request for Impacting Landmark Trees

The broadly arching canopies of the existing Cottonwoods and other trees create an attractive and shady trail. Many of the Landmark cottonwoods will have a 30 to 40-foot radius canopies, and in order to widen the trail as shown there must be disturbance within the driplines plus 5 feet. Tree protection specifications will be listed in a separate memo, and must be included as part of the contractor's bid package.

Conclusions

- This project saves 35% of the Significant trees, which meets the minimum requirement.
- Most of the Landmark cottonwoods will be impacted by definition because of the broadly arching canopies and their wide-spreading roots.
- The prognosis for all trees will be favorable if the contractor complies with the tree protection specifications.

Limits

Unless expressed otherwise (1) information contained in this report covers only those items that were examined and reflects the condition of those items at the time of inspection, and (2) the inspection is limited to visual examination of accessible items without further dissection, excavation, probing, or coring.

Loss or alteration of any part of a report invalidates the entire report.

There is no warranty or guarantee expressed or implied, that problems or deficiencies of the trees in question may not arise in the future.

The report and conclusions expressed herein represent the opinion of Tina Cohen d/b/a Northwest Arborvitae. Our fee is no way contingent upon any specified value, a result or occurrence of a subsequent event, or upon any finding to be reported.

Respectfully submitted,

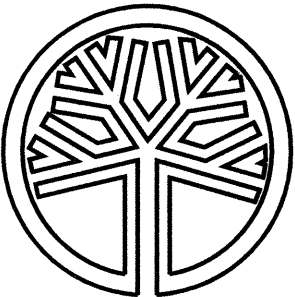
Tina Cohen

Tina Cohen, ISA Certified Arborist #PN0245
Member, American Society of Consulting Arborists

Enclosures: Spreadsheet
Tree Protection Specifications

REVISIONS	DATE	BY	DESIGNED
			J. SWENSON
			DRAWN B. PURGANAN
			CHECKED H. LONGFELLOW
			APPROVED

ONE INCH AT FULL SCALE, IF NOT, SCALE ACCORDINGLY
FILE NAME BL1521075P12T01TP8-12
JOB No. 554-1521-075
DATE DECEMBER 2010



STATE OF WASHINGTON
REGISTERED
LANDSCAPE ARCHITECT
Jens Swenson
CERTIFICATE NO. 656

Parametrix	ENGINEERING . PLANNING . ENVIRONMENTAL SCIENCES
411 108TH AVENUE N.E., SUITE 1800 BELLEVUE, WASHINGTON 98004 T. 425.458.8200 F. 425.458.6363 www.parametrix.com	

PROJECT NAME	EAST LAKE SAMMAMISH MASTER PLAN TRAIL, REDMOND SEGMENT
187TH AVENUE NE TO NE 70TH STREET	

TREE PRESERVATION NOTES AND DETAILS
--

DRAWING NO. 67 OF 72
TP9

THIS DEVELOPMENT SHALL BE CONSTRUCTED IN ACCORDANCE WITH THE CITY OF REDMOND STANDARD SPECIFICATIONS AND DETAILS, 2011 EDITION

APPROVED FOR CONSTRUCTION	PLAN CHK ENGR <i>N/A</i>
	STORM <i>N/A</i>
FOR: WILLIAM J. CAMPBELL DIRECTOR OF PUBLIC WORKS CITY OF REDMOND	UTILITY <i>N/A</i>
	FIRE DEPT <i>N/A</i>
	TRANS / ENGR <i>N/A</i>
	PLANNING DEPT <i>King John 11/14/11</i>
DATE: _____	
THIS APPROVAL IS FOR THE DESIGN CONCEPT ONLY. THESE PLANS APPEAR TO BE IN CONFORMANCE WITH THE CITY OF REDMOND DESIGN STANDARDS FOR CONSTRUCTION. THIS APPROVAL SHALL NOT BE CONSTRUED AS AUTHORIZING CONSTRUCTION NOT IN ACCORDANCE WITH APPLICABLE CITY STANDARDS. THE CITY RESERVES THE RIGHT TO REQUIRE REVISIONS TO THE APPROVED PLANS TO ASSURE CONFORMANCE WITH CITY OF REDMOND DESIGN STANDARDS FOR CONSTRUCTION AT ANY TIME THAT IT IS DISCOVERED THAT THE PROPOSED CONSTRUCTION DOES NOT OTHERWISE MEET THE APPLICABLE CONSTRUCTION STANDARDS. THE OWNER IS REQUIRED TO PROVIDE DESIGNS AND PLANS IN ACCORDANCE WITH APPLICABLE CITY STANDARDS AND ASSURES THAT CONSTRUCTION IS ACCOMPLISHED IN ACCORDANCE WITH THESE STANDARDS. THE OWNER AND/OR DESIGN ENGINEER AND/OR DEVELOPER MAY BE REQUIRED TO MAKE NECESSARY APPROVED FIELD REVISIONS TO CORRECT ANY ERRORS OR OMISSIONS FOUND ON THE APPROVED PLAN.	

11-0216

Tree number, See plan	Diameter inches	Species	Dripline radius FEET	LANDMARK	SIGNIFICANT	Healthy	NOT healthy OMIT from count	Structure	Comment	Status: SAVE	IMPACT	REMOVE
101	14	Maple norway	16		1	1					1	
102	9	Cascara	15		1	1					1	
103	11	maple bigleaf	12		1	1					1	
104	24	fir, Douglas	14		1	1					1	
105	28	fir, Douglas	17		1	1					1	
106	15	fir, Douglas	18		1	1				1		
107	9	Maple hedge	16		1	1					1	
108	18, 12	Cherry	10		1	1				1		
109	30	fir, Douglas	18		1	1					1	
110	18	fir, Douglas	7		1	1				1		
111	36	fir, Douglas	24	1		1					1	
112	13	fir, Douglas	15		1	1				1		
113	30	fir, Douglas	26		1	1					1	
114	24	fir, Douglas	20		1	1				1		
115	20	maple bigleaf	25		1	1					1	
116	12	Maple hedge	17		1	1			multi trunks			
117	30	fir, Douglas	20		1	1			root prune		1	
118	36	cottonwood	25	1		1			MONITOR may need to be removed.		1	
119 OS	7	maple norway	12		1	1					1	
120	20	cottonwood	24		1	1					1	
121	12	fir, Douglas	18		1	1					1	
122	8	cottonwood	20		1	1					1	
123	15	cottonwood	20		1	1					1	
124	10	cottonwood	15		1	1					1	
125	12	cottonwood	20		1	1					1	
126	15	cottonwood	25		1	1					1	
127	10	cottonwood	20		1	1					1	
128	30	cottonwood	25		1	1					1	
129	24	cottonwood	30		1	1					1	
130	24	cottonwood	20		1	1					1	
131	10	cottonwood	25		1	1					1	
132	10	cottonwood	20		1	1					1	
133	30	cottonwood	25		1	1					1	
134	15	cottonwood	20		1	1					1	
135	10	cottonwood	15		1	1					1	
136	12	cottonwood	10		1	1				1		
137	22	cottonwood	20		1	1					1	
138	12	cottonwood	20		1	1					1	
139	12	cottonwood	20		1	1					1	
140	10	cottonwood	24		1	1					1	
141	9	cottonwood	25		1	1				1		
142	20	cottonwood	25		1	1					1	
143	12	Cherry	20		1		overall decline	multi stems	partly dead			
144	12	fir, Douglas	20		1	1						1
145	12	cottonwood	20		1		due to structure	broken top	prev failure			0
146	28	cottonwood	20		1	1						1
147	12	cottonwood	30		1	1						1
148	14	cottonwood	25		1	1						1
149	30	cottonwood	20		1	1						1
150	9	Aspen	15		1	1						1
151	15	cottonwood	20		1	1						1
152	15	fir, Douglas	20		1	1						1
153	12	Pine, Austrian	18		1	1						1
154	18	cottonwood			1	1						1
155	15	cottonwood			1	1						1
156	7	cottonwood			1	1			new			1
157	14	cottonwood			1	1			new			1
158	26	fir, Douglas	23		1	1			disturbed on e by prev construc		1	
159	12	fir, Douglas	10		1	1			158-160 need special attention		1	
160	18	fir, Douglas	18		1	1						1
161	8	cottonwood	17		1	1						1
162	28	cottonwood	18		1	1						1
163	12	cottonwood	12		1	1						1
164	14	cottonwood	28		1	1						1
165	13	cottonwood	20		1	1						1
166 OS	12	fir, Douglas	15		1	1					1	
167 OS	12	fir, Douglas	13		1	1					1	
168 OS	15	fir, Douglas	15		1	1					1	
171	16	fir, Douglas	15		1	1				1		
173	12	fir, Douglas	12		1	1				1		
174	16	fir, Douglas	16		1	1				1		
176	14	fir, Douglas	18		1	1				1		
177	16	fir, Douglas	17		1	1				1		
178	14	fir, Douglas	14		1	1				1		
179	16	fir, Douglas	17		1	1				1		
181	24	fir, Douglas	20		1	1					1	
182	34	fir, Douglas	20	1		1				1		
183	34	cottonwood	18	1		1				1		
184	24	fir, Douglas	14		1					1		
185	28	fir, Douglas	25		1	1					1	
186	26	fir, Douglas	12		1	1				1		
187	22	fir, Douglas	16		1	1					1	
188	6	Maple red	10		1	1					1	
189	12	willow			1	1						1
190	12	willow			1	1						1
191	15	cottonwood			1	1						1

NOT USED

Tree number, See plan	Diameter inches	Species	Dripline radius FEET	LANDMARK	SIGNIFICANT	Healthy	NOT healthy OMIT from count	Structure	Comment	Status: SAVE	IMPACT	REMOVE
192	15	cottonwood			1	1						1
193	6	cottonwood			1	1						1
194	42	cottonwood			1	1						1
195	8	willow	18		1	1						1
196	14	cottonwood			1	1						1
197	20	cottonwood			1	1						1
198	15	cottonwood			1	1						1
199	12	cottonwood			1	1						1
200	12	cottonwood			1	1						1
201	10	willow			1	1						1
202	10	willow			1	1						1
203	10	cottonwood	14		1	1						1
204	6	cottonwood	12		1	1						1
205	11	cottonwood	14		1	1						1
206	9	cottonwood	10		1	1						1
207	9	cottonwood	10		1	1						1
208	9	cottonwood	10		1	1						1
211	6	ash, Oregon	9		1	1						1
212	10	Birch	10		1	1				1		
219	26	cottonwood	20		1		due to structure	Excessive limbing				0
220	26	cottonwood	20		1		due to structure	Excessive limbing	leans east			0
221	28	cottonwood	20		1		due to structure	Excessive limbing				0
222	8	cottonwood			1		due to structure	Cut in half by uphill neighbor for view	neighb should mitigate			0
223	8	cottonwood			1		due to structure	Cut in half by uphill neighbor for view				0
224	8	cottonwood			1		due to structure	Cut in half by uphill neighbor for view				0
225	8	cottonwood			1		due to structure	Cut in half by uphill neighbor for view				0
226	8	cottonwood			1		due to structure	Cut in half by uphill neighbor for view				0
227	8	cottonwood			1		due to structure	Cut in half by uphill neighbor for view				0
228	8	cottonwood			1		due to structure	Cut in half by uphill neighbor for view				0
229	8	cottonwood			1		due to structure	Cut in half by uphill neighbor for view	229, 230, 231 locations are estimated on site plans. Area is very dense with 8" diam trees. There are many more trees than shown.			0
230	8	cottonwood			1		due to structure	Cut in half by uphill neighbor for view				0
231	8	cottonwood			1		due to structure	Cut in half by uphill neighbor for view				0
232	50	cottonwood	25	1		1					1	
233	27	cottonwood	25		1	1					1	
234	22	cottonwood	20		1	1				1		
235	22	alder	20		1	1					1	
236	14	ash, Oregon	20		1	1					1	
237	14	ash, Oregon	20		1	1					1	
238	6	ash, Oregon	10		1	1						1
239	12	cottonwood	10		1	1				1		
240	24	cottonwood	20		1	1					1	
241	12	cottonwood	10		1	1						1
242	12	Aspen	8		1	1			will stump sprout			1
243	12	Aspen	8		1	1						1
244	6	Aspen	6		1	1				1		
245	12	Aspen	8		1	1				1		
246	6	Aspen	6		1	1				1		
247	6	Aspen	8		1	1				1		
249	44	cottonwood	47	1		1					1	
250	12	cottonwood	18		1	1						1
251	30	cottonwood	30		1	1						1
252	14	cottonwood	20		1	1						1
253	36	cottonwood	25	1		1					1	
255	36	cottonwood	25	1		1					1	
256	12	cottonwood	12		1	1						1
257	34	cottonwood	25	1		1					1	
259	36	cottonwood	25	1		1					1	
260	8	cottonwood	10		1	1						1
261	31	cottonwood	30	1		1					1	

THIS DEVELOPMENT SHALL BE CONSTRUCTED IN ACCORDANCE WITH THE CITY OF REDMOND STANDARD SPECIFICATIONS AND DETAILS, 2011 EDITION

APPROVED FOR CONSTRUCTION	PLAN CHK ENGR <i>N/A</i>
FOR: WILLIAM J. CAMPBELL DIRECTOR OF PUBLIC WORKS CITY OF REDMOND	UTILITY <i>N/A</i> FIRE DEPT <i>N/A</i> TRANS / ENGR <i>N/A</i> PLANNING DEPT <i>Kelsey J. HAHN</i>
DATE:	
THIS APPROVAL IS FOR THE DESIGN CONCEPT ONLY. THESE PLANS APPEAR TO BE IN CONFORMANCE WITH THE CITY OF REDMOND DESIGN STANDARDS FOR CONSTRUCTION. THIS APPROVAL SHALL NOT BE CONSTRUED AS AUTHORIZING CONSTRUCTION NOT IN ACCORDANCE WITH APPLICABLE CITY STANDARDS. THE CITY RESERVES THE RIGHT TO REQUIRE REVISIONS TO THE APPROVED PLANS TO ASSURE CONFORMANCE WITH CITY OF REDMOND DESIGN STANDARDS FOR CONSTRUCTION AT ANY TIME THAT IT IS DISCOVERED THAT THE PROPOSED CONSTRUCTION DOES NOT OTHERWISE MEET THE APPLICABLE CONSTRUCTION STANDARDS. THE OWNER IS REQUIRED TO PROVIDE DESIGNS AND PLANS IN ACCORDANCE WITH APPLICABLE CITY STANDARDS AND ASSURES THAT CONSTRUCTION IS ACCOMPLISHED IN ACCORDANCE WITH THOSE STANDARDS. THE OWNER AND/OR DESIGN ENGINEER AND/OR DEVELOPER MAY BE REQUIRED TO MAKE NECESSARY APPROVED FIELD REVISIONS TO CORRECT ANY ERRORS OR OMISSIONS FOUND ON THE APPROVED PLAN.	

11-0217

REVISIONS	DATE	BY	DESIGNED J. SWENSON
			DRAWN B. PURGANAN
			CHECKED H. LONGFELLOW
			APPROVED

ONE INCH AT FULL SCALE.
IF NOT, SCALE ACCORDINGLY
FILE NAME
BL1521075P12T01TP8-12
JOB No.
554-1521-075
DATE
DECEMBER 2010



DATE: Dec 20, 2010 - 9:48am PLOTTED BY: purgout IMAGES: Tree Inventory & Report 1 of 4 | Tree Inventory & Report 2 of 4 | Tree Inventory & Report 3 of 4 | Tree Inventory & Report 4 of 4 | XREFS: BL1521075P12T01-bk

Tree number, See plan	Diameter inches	Species	Dripline radius FEET	LANDMARK	SIGNIFICANT	Healthy	NOT healthy OMIT from count	Structure	Comment	Status: SAVE	IMPACT	REMOVE
262	32	cottonwood	25	1		1					1	
264	32	cottonwood	30	1		1					1	
265	12	ash, Oregon	20		1	1				1		
266	9	ash, Oregon	15		1	1						1
267	18	alder	20		1	1						1
268	12	cottonw ood	20		1	1					1	
269	14	cottonw ood	27		1	1					1	
270	32	cottonwood	28	1		1				1		
271	12	alder	33		1		due to roots	Leans east	partly uprooted,remove for project			0
272	8	maple bigleaf	25		1	1						1
273	30	cottonw ood	20		1	1				1		
274	20	cottonw ood	20		1	1				1		
278 OS	30	cottonw ood	40		1	1					1	
279	12	cottonw ood	9		1	1					1	
280	10	cedar, w red	7		1	1				1		
281	8	cedar, w red	10		1	1				1		
282	32	cottonwood	30	1		1			corrected diameter		1	
283	8	ash, Oregon	7		1	1				1		
284	8	ash, Oregon	6		1	1				1		
290 OS	36	cottonwood	40	1		1					1	
293	14	ash, Oregon	25		1	1						1
294	14	cottonw ood	10		1	1						1
296 OS	28	cottonw ood	40		1	1					1	
297 OS	8	cottonw ood	30		1	1					1	
300	8	cottonw ood	28		1	1					1	
301	10	ash, Oregon	26		1	1					1	
302	10	ash, Oregon	26		1	1					1	
303	36	cottonwood	20	1		1			monitor		1	
304	8	alder	10		1	1					1	
305	8	alder			1	1	dead		delete from count			
306	12	alder	25		1	1					1	
307	18	fir, Douglas	30		1	1					1	
308	10	Aspen	6		1	1					1	
309	8	Aspen	10		1	1					1	
310	6	Aspen	20		1	1			top leans east			1
311	13	alder	20		1	1					1	
312	12	alder			1		dead		has only one live branch, OMIT FROM COUNT			
316	12	alder	10		1	1				1		
317	10	ash, Oregon			1		due to roots	Leans east	partly uprooted OMIT			
323	10	Aspen	20		1	1				1		
324	8	Aspen	5		1	1					1	
325	12	Aspen	10		1	1					1	
326	6	Aspen	4		1	1					1	
327	6	maple bigleaf	10		1	1						1
328	6	Aspen	6		1	1						1
329	8	Aspen	6		1	1						1
331	48	cottonwood	50	1		1			5 trunks, see report re LM cotts		1	
332	60	cottonwood	40	1		1					1	
333	40	cottonwood	20	1		1				1		
334	80	cottonwood	30	1		1					1	
335	22	ash, Oregon	30		1	1					1	
336	10	ash, Oregon	30		1	1					1	
337	8	ash, Oregon	15		1	1					1	
338	8	ash, Oregon	10		1	1				1		
339	8	ash, Oregon	25		1	1					1	
340	12	ash, Oregon	10		1	1					1	
341	8	ash, Oregon	10		1	1					1	
342	6	ash, Oregon	20		1	1				1		
343	20	ash, Oregon	20		1	1				1		
346	8	ash, Oregon			1		due to roots	Leans east	partly uprooted OMIT FROM COUNT			
347	8	ash, Oregon	10		1	1				1		
348	8	ash, Oregon	10		1	1				1		
349	8	ash, Oregon	10		1	1				1		
350	75	cottonwood	35	1		1			is flagged		1	
351	12	cottonw ood	10		1	1				1		
352	8	ash, Oregon	10		1	1					1	
353	10	ash, Oregon	10		1	1					1	
354	20	ash, Oregon	10		1	1					1	
355	6	ash, Oregon	20		1	1			355-357 saplings		1	
356	6	ash, Oregon	10		1	1					1	
357	8	ash, Oregon	10		1	1					1	
358	10	ash, Oregon	10		1	1					1	
359	8	Dogw ood, pacific	20		1	1				1		
360	24	cottonw ood	30		1	1			grafted to 350		1	
361	8	ash, Oregon	30		1	1					1	
362	10	ash, Oregon	20		1	1					1	

Tree number, See plan	Diameter inches	Species	Dripline radius FEET	LANDMARK	SIGNIFICANT	Healthy	NOT healthy OMIT from count	Structure	Comment	Status: SAVE	IMPACT	REMOVE
363	6	ash, Oregon			1		overall decline	broken top	363-366 OMIT DUE TO POOR CONDITION			
364	6	ash, Oregon			1		overall decline					
365	12	ash, Oregon			1		overall decline					
366	12	ash, Oregon			1		overall decline					
367	20	maple bigleaf	25		1	1					1	
368	10	maple bigleaf	20		1	1					1	
369	15	maple bigleaf	30		1	1					1	
370	10	w ilow	25		1	1					1	
371	6	ash, Oregon	10		1	1					1	
372	20	cottonw ood	20		1	1					1	
373	20	cottonw ood	20		1	1					1	
374	18	maple bigleaf	25		1	1					1	
375	60	cottonw ood	20	1		1				1		
376	30	cottonw ood	25		1	1					1	
377	12	maple bigleaf	10		1	1					1	
378	20	maple bigleaf	20		1	1					1	
379	12	w ilow	20		1	1					1	
381	12	ash, Oregon			1		due to trunk	Extensive decay	broken and resprouted. OMIT			
382	26	ash, Oregon	30		1	1					1	
383	22	ash, Oregon			1		due to canopy	multi stems	canopy half dead. OMIT over culvert			
385	28	maple bigleaf	10		1	1				1		
386	12	w ilow	20		1	1					1	
387	14	cottonw ood	15		1	1					1	
388	72	maple bigleaf	20	1		1						1
389	20	ash, Oregon	22		1	1					1	
390	14	maple bigleaf			1		due to trunk	topped	for line clearance OMIT			
391	24	ash, Oregon	15		1	1						1
392	18	Cascara	8		1	1			nice		1	
393	12	ash, Oregon	10		1	1						1
394	32	ash, Oregon	20	1		1			4 trunks		1	
395	12	ash, Oregon	20		1	1					1	
396	14	alder	20		1	1					1	
397	14	ash, Oregon	20		1	1					1	
398	10	Cascara	20		1	1					1	
399	8	Cascara	6		1	1					1	
400	20	maple bigleaf	20		1	1			5 trunks		1	
401	18	maple bigleaf	20		1	1					1	
403	14	maple bigleaf	30		1	1					1	
404	14	maple bigleaf	20		1	1			4 trunks		1	
405	12	ash, Oregon			1		due to trunk	OK	extensive decay and die back. OMIT			0
406	10	ash, Oregon	20		1	1					1	
407	10	Aspen	10		1	1					1	
408	12	ash, Oregon	20		1	1					1	
409	10	ash, Oregon	10		1	1			2 trunks		1	
411	10	ash, Oregon			1		due to structure	broken top	broke in half, top resprouted. OMIT FROM COUNT.			
413	8	ash, Oregon	10		1	1					1	
414	8	ash, Oregon	10		1	1					1	
415	12	ash, Oregon			1		due to trunk	OK	extensive trunk decay, poor canopy. OMIT from count.			
416	18	ash, Oregon	20		1	1					1	
417	10	ash, Oregon	20		1	1					1	
418	6	ash, Oregon	8		1	1					1	
419	12	ash, Oregon	10		1	1					1	
420	12	ash, Oregon	10		1	1					1	
421	8	ash, Oregon	20		1	1					1	
422	18	maple bigleaf	25		1	1			2 trunks		1	
423	30	cottonw ood	30		1	1					1	
424	14	maple bigleaf	20		1	1			2 trunks		1	
425	22	maple bigleaf	15		1	1					1	
426	20	maple bigleaf	20		1	1						1
427	12	ash, Oregon			1		due to roots	topped	dying, partly uprooted. OMIT from count			
428	26	maple bigleaf	20		1	1						1
430	8	ash, Oregon	10		1	1				1		
431	30	cottonw ood	30		1	1				1		
432	20	cottonw ood			1		due to trunk	one-sided, leaning	uncorrected lean to the E. OMIT from count. OK if retained for habitat.			
433	38	cottonwood	40	1		1			broken top is OK needs HAZARD evaluation since it leans over the trail		1	
435	26	cottonw ood	30		1	1					1	
436	18	ash, Oregon	30		1	1					1	
437	10	maple bigleaf			1		overall decline	OK	half dead. OMIT from count.			
438	18	maple bigleaf	25		1	1					1	
439	12	maple bigleaf	20		1	1						1
440	18	maple bigleaf	30		1	1					1	
441	10	maple bigleaf	20		1	1			3 trunks		1	

THIS DEVELOPMENT SHALL BE CONSTRUCTED IN ACCORDANCE WITH THE CITY OF REDMOND STANDARD SPECIFICATIONS AND DETAILS, 2011 EDITION

APPROVED FOR CONSTRUCTION	PLAN CHK ENGR <i>N/A</i>
FOR: WILLIAM J. CAMPBELL DIRECTOR OF PUBLIC WORKS CITY OF REDMOND	STORM <i>N/A</i> UTILITY <i>N/A</i> FIRE DEPT. <i>N/A</i> TRANS / ENGR <i>N/A</i> PLANNING DEPT. <i>King John 11/14/10</i>
DATE: _____	
THIS APPROVAL IS FOR THE DESIGN CONCEPT ONLY. THESE PLANS APPEAR TO BE IN CONFORMANCE WITH THE CITY OF REDMOND DESIGN STANDARDS FOR CONSTRUCTION. THIS APPROVAL SHALL NOT BE CONSTRUED AS AUTHORIZING CONSTRUCTION NOT IN ACCORDANCE WITH APPLICABLE CITY STANDARDS. THE CITY RESERVES THE RIGHT TO REQUIRE REVISIONS TO THE APPROVED PLANS TO ASSURE CONFORMANCE WITH CITY OF REDMOND DESIGN STANDARDS FOR CONSTRUCTION AT ANY TIME THAT IT IS DISCOVERED THAT THE PROPOSED CONSTRUCTION DOES NOT OTHERWISE MEET THE APPLICABLE CONSTRUCTION STANDARDS. THE OWNER IS REQUIRED TO PROVIDE DESIGNS AND PLANS IN ACCORDANCE WITH APPLICABLE CITY STANDARDS AND ASSURES THAT CONSTRUCTION IS ACCOMPLISHED IN ACCORDANCE WITH THOSE STANDARDS. THE OWNER AND/OR DESIGN ENGINEER AND/OR DEVELOPER MAY BE REQUIRED TO MAKE NECESSARY APPROVED FIELD REVISIONS TO CORRECT ANY ERRORS OR OMISSIONS FOUND ON THE APPROVED PLAN	

DATE: Dec 20, 2010 - 9:50am PLOTTED BY: purgobut IMAGES: Tree Inventory & Report 1 of 4 | Tree Inventory & Report 2 of 4 | Tree Inventory & Report 3 of 4 | Tree Inventory & Report 4 of 4 | XREFS: XL1521075P1201-1btk

Tree number, See plan	Diameter inches	Species	Dripline radius FEET	LANDMARK	SIGNIFICANT	Healthy	NOT healthy OMIT from count	Structure	Comment	Status: SAVE	IMPACT	REMOVE
442	10	maple bigleaf	8		1	1			2 trunks	1		
443	12	maple bigleaf	20		1	1			2 trunks	1		
444	12	maple bigleaf	10		1	1			3 trunks	1		
445	16	maple bigleaf	20		1	1			5 trunks	1		
446	16	maple bigleaf	30		1	1			5 trunks	1		
447	34	cottonwood	20	1		1			roots are everywhere		1	
448	8	maple bigleaf	20		1	1			trunk decay. OMIT from count.			1
449	8	ash, Oregon			1		overall decline	OK				
450	8	ash, Oregon			1		due to trunk	broken top	broke and sprouted. OMIT from count.			
452	24	cottonwood	20		1	1				1		
454	6	maple bigleaf	10		1	1				1		
455	18	ash, Oregon	20		1	1					1	
456	10	cottonwood	20		1	1				1		
457	32	cottonwood	30	1		1				1		
458	40	cottonwood	35	1		1			flagged		1	
459	6	cottonwood			1		due to structure	broken top	broken in half leans E to the light. Flagged.			
460	6	maple bigleaf	25		1	1					1	
461	10	cottonwood	10		1	1				1		
464	12	ash, Oregon	20		1	1			2 trunks		1	
465	8	ash, Oregon	8		1		due to trunk	OK	extensive decay, borer insects present. OMIT from count.			
466	6	maple bigleaf	15		1	1					1	
467	8	alder	8		1	1				1		
468	14	ash, Oregon			1		overall decline	broken top	early defoliation, poor canopy. OMIT from count.			
469	12	cottonwood	10		1	1				1		
470	6	ash, Oregon	6		1	1			4 trunks, some are dead and smaller ones are sprouting.		1	
471	36	cottonwood		1			due to structure	broken top	3 trunks fused at the base, massive failures (one-third of the tree). OMIT from count.			
472	36	cottonwood	25	1		1				1		
473	8	cottonwood	10		1	1				1		
474	6	cottonwood	10		1	1				1		
475	18	cottonwood	15		1	1				1		
476	8	fir, Douglas	10		1	1			sapling. Prune for clearance.		1	
477	20	cottonwood	25		1	1					1	
478	12	cottonwood	10		1	1				1		
479	20	maple bigleaf	20		1	1				1		
480	12	maple bigleaf	15		1	1				1		
481	28	cottonwood	25		1	1			2 trunks		1	
482	6	fir, Douglas	10		1	1				1		
483	6	alder	10		1	1				1		
484	12	cottonwood	15		1	1					1	
485	6	cottonwood	15		1	1					1	
486	8	alder	15		1	1				1		
487	6	cottonwood	10		1	1				1		
488	8	maple bigleaf	12		1	1					1	
489	8	cottonwood	10		1	1						1
490	15	cottonwood	20		1	1				1		
491	10	cottonwood	10		1	1				1		
492	12	cottonwood	20		1	1				1		
493	18	willow	15		1	1					1	
494	6	alder	8		1	1					1	
495	6	cottonwood			1		due to trunk	OK	trunk missing half its bark due to deer or other wounding. OMIT from count.			
496	10	cottonwood	15		1	1				1		
497	6	cottonwood	15		1	1				1		
498	6	cottonwood	10		1	1				1		
499	6	cottonwood	10		1	1				1		
500	10	cottonwood	15		1	1					1	
501	8	cottonwood	10		1	1				1		
502	8	fir, Douglas	10		1	1				1		
503	28	fir, Douglas	15		1	1				1		
				29	276	267	omit 39 from tree total			91	136	39

LANDMARK AND SIGNIFICANT TREE REPLACEMENT LIST

QUANTITY	BOTANICAL NAME	COMMON NAME	SIZE
43*	ACER MACROPHYLLUM	BIG-LEAF MAPLE	1" CAL
24*	FRAXINUS LATIFOLIA**	OREGON ASH	1" CAL
22	PSUEDOTSUGA MENZIESII	DOUGLAS FIR	6-8 FEET TALL

* REPLACED AT A RATE OF 3 TIMES THE NUMBER OF TREES REMOVED TO COMPENSATE FOR SMALLER DIAMETER THAN REQUIRED.
** PLANT IN LOCATIONS WITH MOIST SOILS.

NOTE:

PLANT REPLACEMENT TREES 10' MIN FROM PAVED TRAIL OR OTHER BUILT FEATURES.

THIS DEVELOPMENT SHALL BE CONSTRUCTED IN ACCORDANCE WITH THE CITY OF REDMOND STANDARD SPECIFICATIONS AND DETAILS, 2011 EDITION

APPROVED FOR CONSTRUCTION	PLAN CHK ENGR <i>N/A</i>
FOR: WILLIAM J. CAMPBELL DIRECTOR OF PUBLIC WORKS CITY OF REDMOND	STORM <i>N/A</i> UTILITY <i>N/A</i> FIRE DEPT <i>N/A</i> TRANS / ENGR <i>N/A</i> PLANNING DEPT <i>Klaus Johnson</i>
DATE: _____	
THIS APPROVAL IS FOR THE DESIGN CONCEPT ONLY. THESE PLANS APPEAR TO BE IN CONFORMANCE WITH THE CITY OF REDMOND DESIGN STANDARDS FOR CONSTRUCTION. THIS APPROVAL SHALL NOT BE CONSTRUED AS AUTHORIZING CONSTRUCTION NOT IN ACCORDANCE WITH APPLICABLE CITY STANDARDS. THE CITY RESERVES THE RIGHT TO REQUIRE REVISIONS TO THE APPROVED PLANS TO ASSURE CONFORMANCE WITH CITY OF REDMOND DESIGN STANDARDS FOR CONSTRUCTION AT ANY TIME THAT IT IS DISCOVERED THAT THE PROPOSED CONSTRUCTION DOES NOT OTHERWISE MEET THE APPLICABLE CONSTRUCTION STANDARDS. THE OWNER IS REQUIRED TO PROVIDE DESIGNS AND PLANS IN ACCORDANCE WITH APPLICABLE CITY STANDARDS AND ASSURES THAT CONSTRUCTION IS ACCOMPLISHED IN ACCORDANCE WITH THOSE STANDARDS. THE OWNER AND/OR DESIGN ENGINEER AND/OR DEVELOPER MAY BE REQUIRED TO MAKE NECESSARY APPROVED FIELD REVISIONS TO CORRECT ANY ERRORS OR OMISSIONS FOUND ON THE APPROVED PLAN.	

11-0219

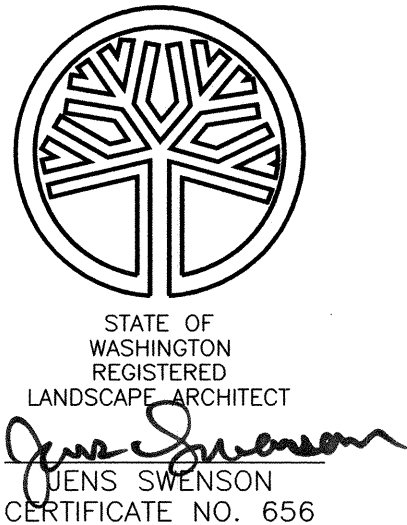
REVISIONS	DATE	BY	DESIGNED J. SWENSON
			DRAWN B. PURGANAN
			CHECKED H. LONGFELLOW
			APPROVED

ONE INCH AT FULL SCALE,
IF NOT, SCALE ACCORDINGLY

FILE NAME
BL1521075P1201TP8-12

JOB No.
554-1521-075

DATE
DECEMBER 2010



Parametrix

ENGINEERING . PLANNING . ENVIRONMENTAL SCIENCES

411 108TH AVENUE N.E., SUITE 1000
BELLEVUE, WASHINGTON 98004
T. 425.458.8200 F. 425.458.6363
www.parametrix.com

PROJECT NAME

EAST LAKE SAMMAMISH
MASTER PLAN TRAIL, REDMOND SEGMENT

187TH AVENUE NE TO NE 70TH STREET

TREE PRESERVATION
NOTES AND DETAILS

DRAWING NO.
70 OF 72

TP12