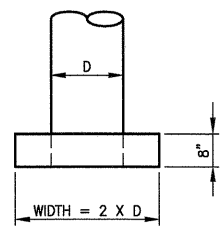
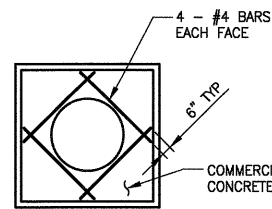


PORTIONS OF SECTIONS 16, 21 & 28, TWP 24 N., RGE. 6 E., W.M.

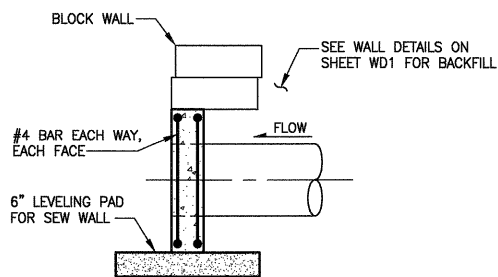


PLAN



ELEVATION

- NOTES:**
1. REINFORCING STEEL SHALL HAVE 1 1/2" MIN. CLEAR COVER TO ALL CONCRETE SURFACES.
 2. FOR SEW WALLS SEE SHEET WD1.

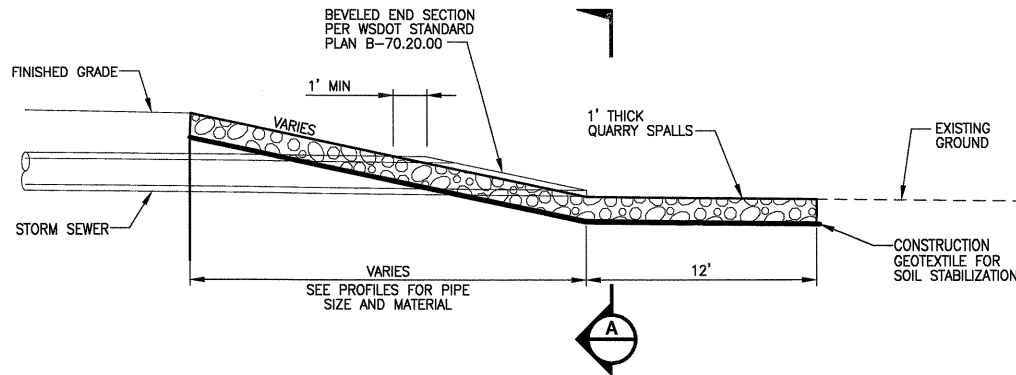


SECTION A

**CONCRETE HEADWALL FOR SEW WALL
DETAIL 1**
NO SCALE

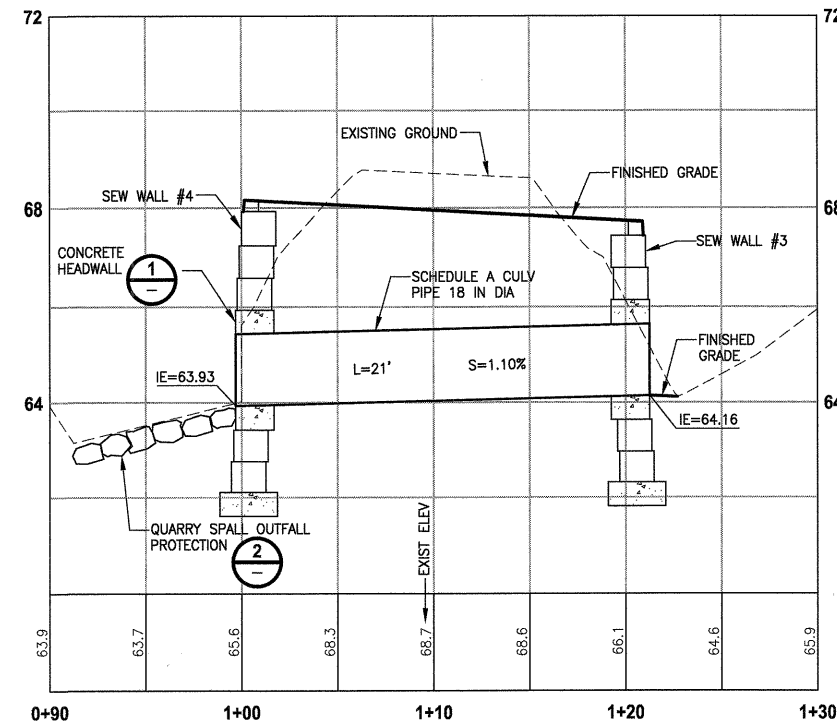
GENERAL NOTES:

1. SEE SHEET CS1 FOR BACKFILL, COMPACTION, AND SURFACING.
2. CULVERTS SHALL HAVE BEVELED END SECTIONS PER WSDOT STD PLAN B-70.20-00.

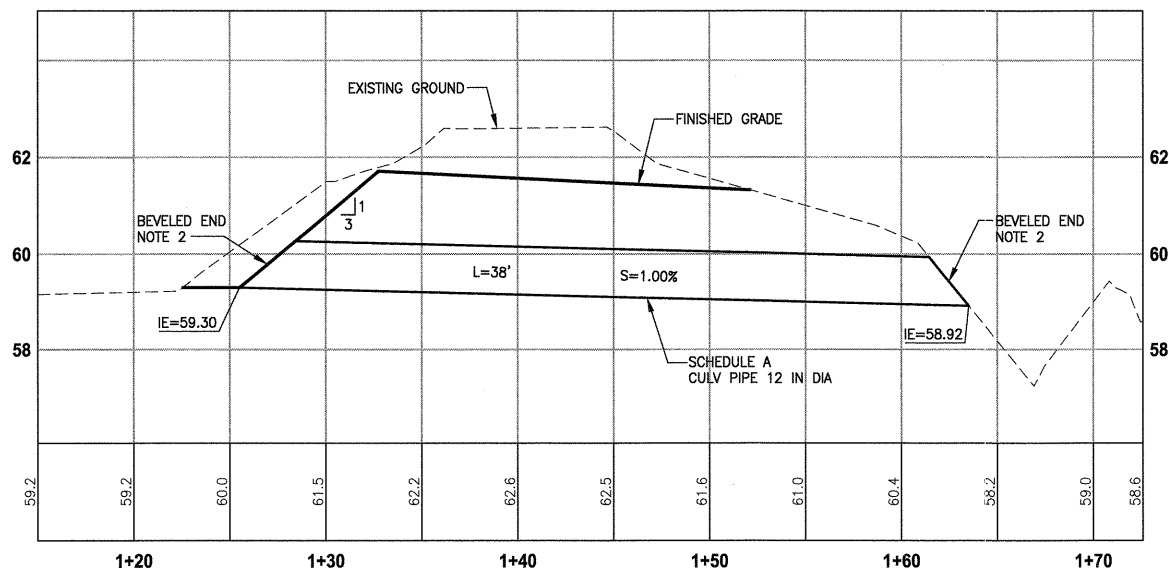


SECTION A

**A-LINE STA 108+56
QUARRY SPALL OUTFALL PROTECTION
DETAIL 2**
NO SCALE

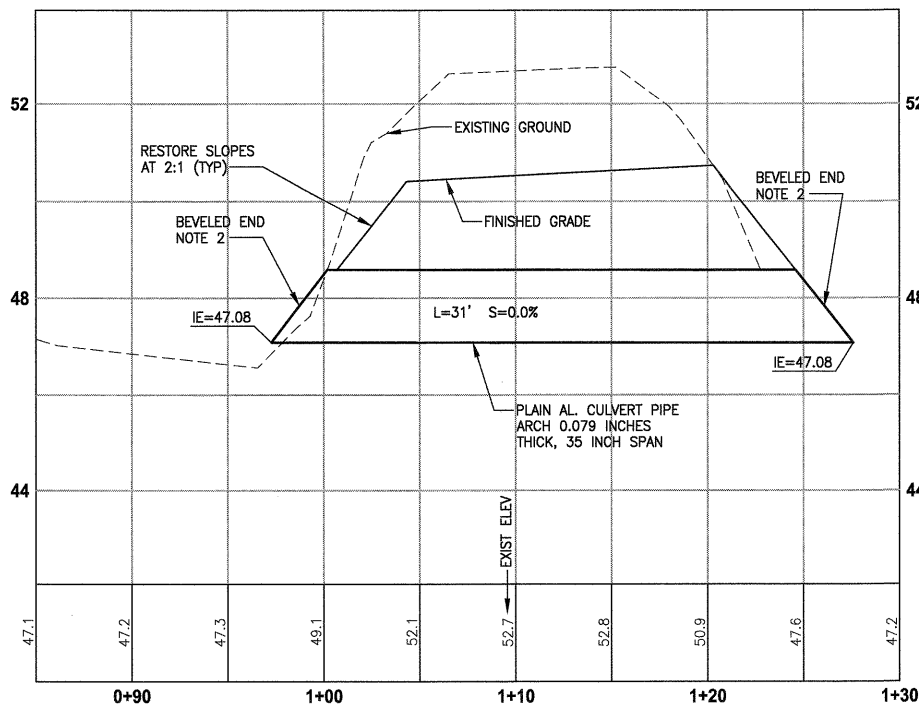


**A-LINE STA 108+56
CULVERT PROFILE**
HORIZ: 1"=5'
VERT: 1"=2'



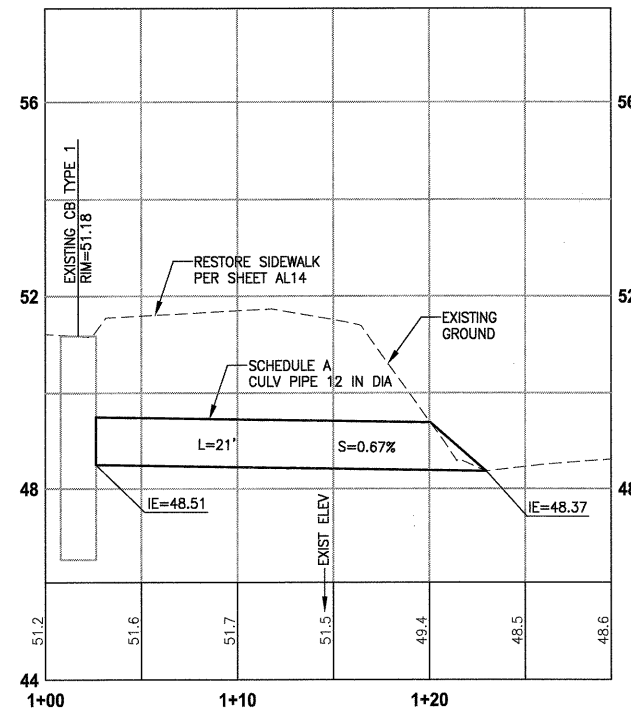
**A-LINE STA 121+25
CULVERT PROFILE**

HORIZ: 1"=5'
VERT: 1"=2'



**A-LINE STA 157+96
CULVERT PROFILE**

HORIZ: 1"=5'
VERT: 1"=2'



**A-LINE STA 165+05
CULVERT PROFILE**

HORIZ: 1"=5'
VERT: 1"=2'

APPROVED
DEC 02 2011
PUBLIC WORKS ENG.
CITY OF ISSAQUAH

PATH: U:\Rail\Projects\Clients\1521-King City\54-1521-075-ELST\99Sves\CADD\Phase 13\Task 02\Drawn
 PLOTTED BY: purgubut DATE: Wednesday, November 23, 2011 10:33:55 AM
 LAYOUT: DD1

REVISIONS	DATE	BY	DESIGNED
			J. JUN
			B. PURGANAN
			P. JOHANNESSEN
			H. LONGFELLOW

ONE INCH AT FULL SCALE.
IF NOT, SCALE ACCORDINGLY

FILE NAME
BL1521075P13T02DD-01

JOB No.
54-1521-075

DATE
NOVEMBER 2011



Parametrix
ENGINEERING · PLANNING · ENVIRONMENTAL SCIENCES

411 108TH AVENUE N.E., SUITE 1000
BELLEVUE, WASHINGTON 98004
T: 425-458-8200 F: 425-458-6303
www.parametrix.com

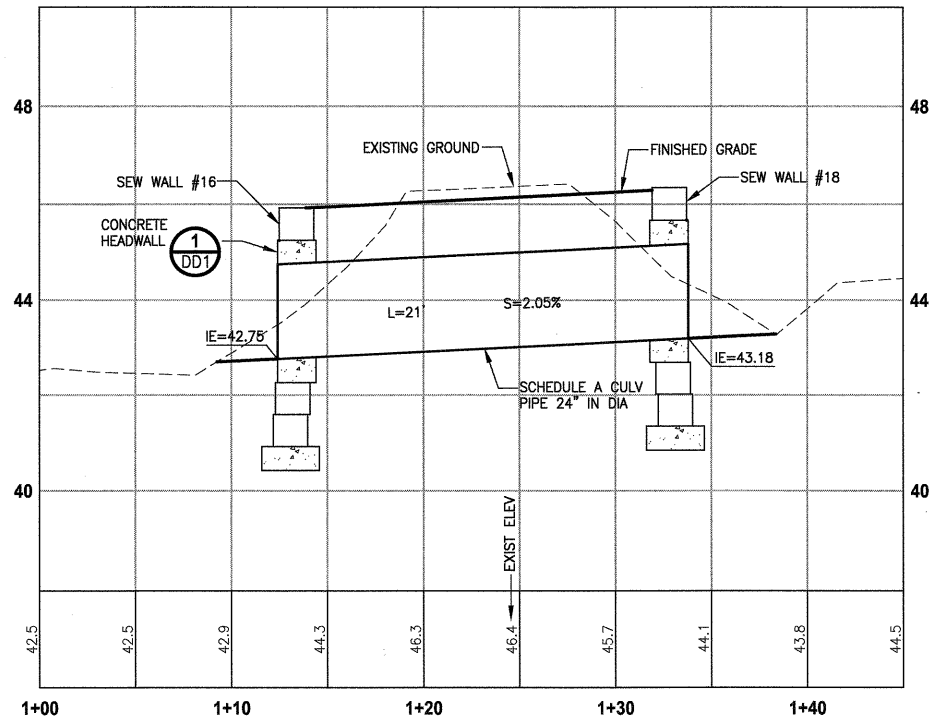
PROJECT NAME
**EAST LAKE SAMMAMISH
MASTER PLAN TRAIL, ISSAQUAH SEGMENT**

GILMAN BLVD TO ISSAQUAH CITY LIMITS

DRAINAGE DETAILS

DRAWING NO.
58 OF 99

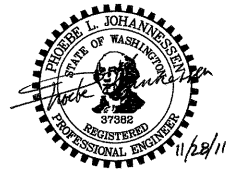
DD1



**A-LINE STA 193+00
CULVERT PROFILE**
HORIZ: 1"=5'
VERT: 1"=2'

LAYOUT: DD2
 PATH: U:\Buil\Projects\Clients\1521-King City\554-1521-075-ELST\995\sec\CADD\Phase 13\Task 02\Drawg\ PLOTTED BY: purgabul DATE: Wednesday, November 23, 2011 10:34:28 AM

APPROVED
 DEC 02 2011
 PUBLIC WORKS ENG.
 CITY OF ISSAQUAH



REVISIONS	DATE	BY	DESIGNED
			C. BUITRAGO
			DRAWN B. PURGANAN
			CHECKED P. JOHANNESSEN
			APPROVED H. LONGFELLOW

ONE INCH AT FULL SCALE. IF NOT, SCALE ACCORDINGLY	
FILE NAME	BL1521075P13T02DD-01
JOB No.	554-1521-075
DATE	NOVEMBER 2011

Parametrix
 ENGINEERING . PLANNING . ENVIRONMENTAL SCIENCES
 411 108TH AVENUE N.E., SUITE 1800
 BELLEVUE, WASHINGTON 98004
 T: 425-458-8200 F: 425-458-8303
 www.parametrix.com

PROJECT NAME
**EAST LAKE SAMMAMISH
 MASTER PLAN TRAIL, ISSAQUAH SEGMENT**
 GILMAN BLVD TO ISSAQUAH CITY LIMITS

DRAINAGE DETAILS

DRAWING NO.
 59 OF 99
DD2