

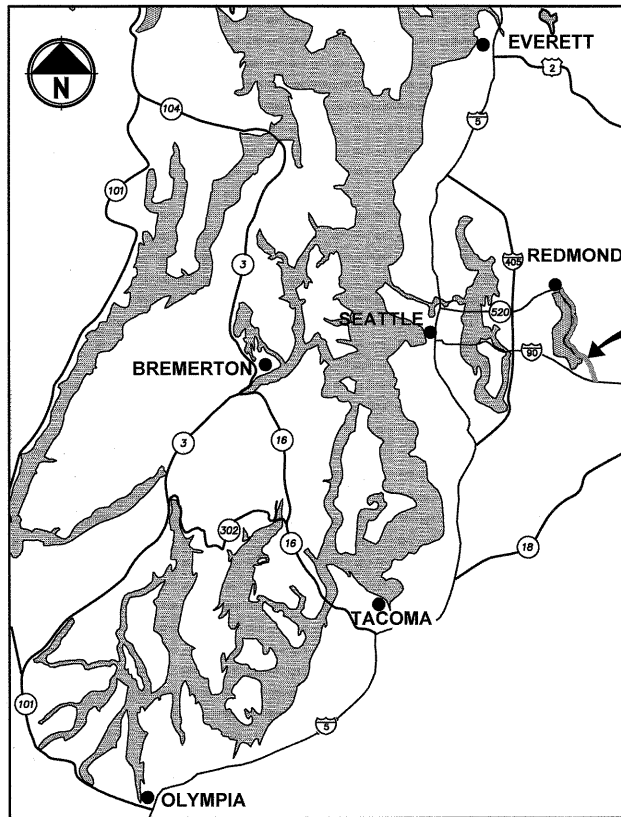
East Lake Sammamish Master Plan Trail, Issaquah Segment

NW Gilman Blvd to Issaquah City Limits

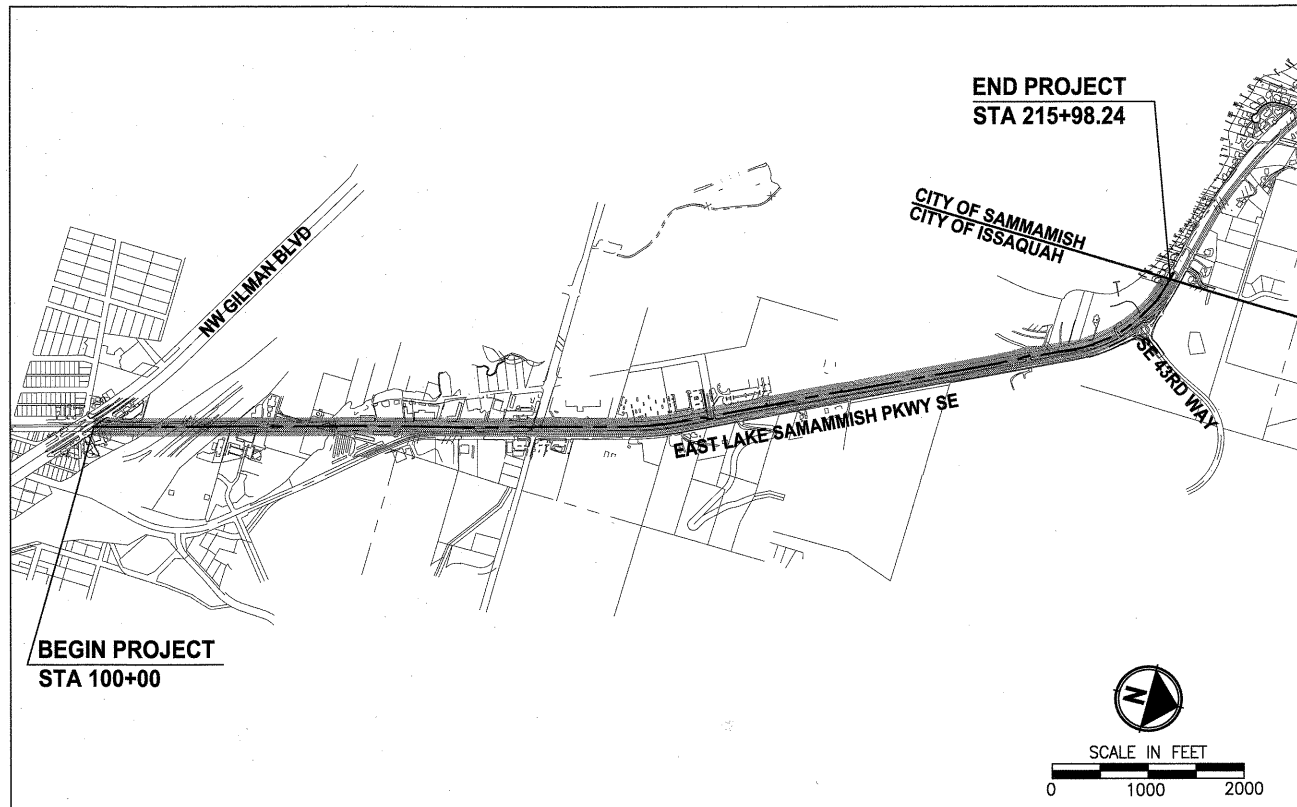
King County, Washington

CONTRACT NO. C00688C11/FEDERAL AID# CM-2017(004)

SITE COPY



LOCATION MAP
NOT TO SCALE



VICINITY MAP

EXISTING ZONE CLASSIFICATION:

COMMUNITY FACILITIES CF-F

EXISTING SHORELINE ENVIRONMENT DESIGNATION:

KING COUNTY DESIGNATION: RURAL AND CONSERVANCY

GENERAL PURPOSE OF THIS PROJECT:

TO DEVELOP AN ALTERNATIVE TRANSPORTATION CORRIDOR IN A FORMER RAILROAD CORRIDOR.

CONTACT INFORMATION:

APPLICANT:
KING COUNTY FACILITIES MANAGEMENT DIVISION
201 S. JACKSON, 7TH FLR
SEATTLE, WA 98104
(206) 263-7281
GINA.AULD@KINGCOUNTY.GOV
CONTACT: GINA AULD

OWNER:
KING COUNTY FACILITIES MANAGEMENT DIVISION

ENGINEER:
PARAMETRIX
411 108TH AVENUE NE
SUITE 1800
BELLEVUE, WA 98004
(425) 458-6200
CONTACT: YAMMIE HO, P.E.

SURVEYOR:
PARAMETRIX
411 108TH AVENUE NE
SUITE 1800
BELLEVUE, WA 98004
(425) 458-6200
CONTACT: STEVE McCASKEY, PLS

ARBORIST:
NORTHWEST ARBORVITA E
8318 26TH AVE NW
SEATTLE, WA 98117
(206) 789-3283
CONTACT: TINA COHEN, CERTIFIED ARBORIST

PROPERTY INFORMATION:

PARCEL NUMBERS: 2824069132 (5.08 ACRES)
2124069020 (12.92 ACRES)
1624069017 (9.14 ACRES)

LEGAL DESCRIPTION:

PARCEL NUMBER 2824069132 PER KING COUNTY ASSESSORS:

THAT PORTION OF THE BURLINGTON NORTHERN AND SANTA FE RAILWAY COMPANY'S (FORMERLY NORTHERN PACIFIC RAILWAY COMPANY) 100 FOOT WIDE SNOQUALMIE BRANCH LINE RIGHT-OF-WAY BEING 50 FEET WIDE ON EACH SIDE OF SAID RAILWAY COMPANY'S MAIN TRACK CENTERLINE OVER AND ACROSS THE EAST HALF OF THE NORTHEAST QUARTER OF SECTION 28, TOWNSHIP 24 NORTH, RANGE 6 EAST, W.M. LYING NORTHERLY OF THE SOUTHERLY MARGIN OF NORTHWEST GILMAN BOULEVARD (STATE ROAD NO 2, RENTON-ISSAQUAH ROAD)

PARCEL NUMBER 2124069020 PER KING COUNTY ASSESSORS:

THAT PORTION OF THE BURLINGTON NORTHERN AND SANTA FE RAILWAY COMPANY'S (FORMERLY NORTHERN PACIFIC RAILWAY COMPANY) 100 FOOT WIDE SNOQUALMIE BRANCH LINE RIGHT-OF-WAY BEING 50 FEET WIDE ON EACH SIDE OF SAID RAILWAY COMPANY'S MAIN TRACK CENTERLINE OVER AND ACROSS THE EAST HALF OF THE NORTHEAST QUARTER OF THE NORTHWEST QUARTER AND THE EAST HALF OF SECTION 21, TOWNSHIP 24 NORTH, RANGE 6 EAST, W.M.

PARCEL NUMBER 1624069017 PER KING COUNTY ASSESSORS:

THAT PORTION OF THE BURLINGTON NORTHERN AND SANTA FE RAILWAY COMPANY'S (FORMERLY NORTHERN PACIFIC RAILWAY COMPANY) 100 FOOT WIDE SNOQUALMIE BRANCH LINE RIGHT-OF-WAY BEING 50 FEET WIDE ON EACH SIDE OF SAID RAILWAY COMPANY'S MAIN TRACK CENTERLINE OVER AND ACROSS GOVERNMENT LOTS 1, AND 2 AND THE EAST HALF OF THE SOUTHWEST QUARTER OF SECTION 16, TOWNSHIP 24 NORTH, RANGE 6 EAST, W.M.

PROJECT & SITE INFORMATION:

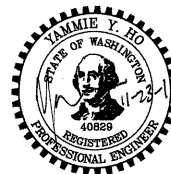
KING COUNTY PROPOSES TO DEVELOP AN ALTERNATIVE TRANSPORTATION CORRIDOR AND RECREATION TRAIL ALONG 2.2 MILES OF A FORMER RAILROAD CORRIDOR IN THE CITY OF ISSAQUAH, LOCATED BETWEEN NW GILMAN BOULEVARD AND THE ISSAQUAH CITY LIMITS. A GRAVEL INTERIM TRAIL IS CURRENTLY IN OPERATION.

DISTURBED AREA = 326,550 SF (7.5 AC)
EXISTING IMPERVIOUS AREA = 252,660 SF (5.8 AC)
PROPOSED IMPERVIOUS AREA = 413,840 SF (9.5 AC)
VOLUME OF ESTIMATED FILL = 2,390 CY
VOLUME OF ESTIMATED EXCAVATION = 8,750 CY

WRITTEN DESCRIPTION OF THE PROJECT:

THE EXISTING GRAVEL TRAIL WILL BE WIDENED TO 12 FEET AND PAVED WITH 2-FOOT GRAVEL SHOULDERS ON BOTH SIDES.

THE PROPOSED IMPROVEMENTS INCLUDE RETAINING WALLS, DRAINAGE IMPROVEMENTS, FENCE, SIGNS AND MITIGATION FOR IMPACTS TO WETLANDS AND WETLAND AND STREAM BUFFERS.



Parametrix
ENGINEERING · PLANNING · ENVIRONMENTAL SCIENCES
411 108TH AVENUE N.E., SUITE 1800
BELLEVUE, WASHINGTON 98004
T: 425-458-6200 F: 425-458-6363
www.parametrix.com

PROJECT NAME
**EAST LAKE SAMMAMISH
MASTER PLAN TRAIL, ISSAQUAH SEGMENT**
GILMAN BLVD TO ISSAQUAH CITY LIMITS

COVER SHEET

DRAWING NO.
1 OF 99
G1

LAYOUT: G1 PATH: U:\Bain\Projects\Clients\1521-King_City\554-1521-075-ELST\99Sect\CADD\Phase 13\Task 02\Draw\ PLOTTED BY: purgobut DATE: Wednesday, November 23, 2011 8:33:12 AM

PUB11-00155

APPROVED

DEC 02 2011

PUBLIC WORKS ENG.
CITY OF ISSAQUAH

RECEIVED

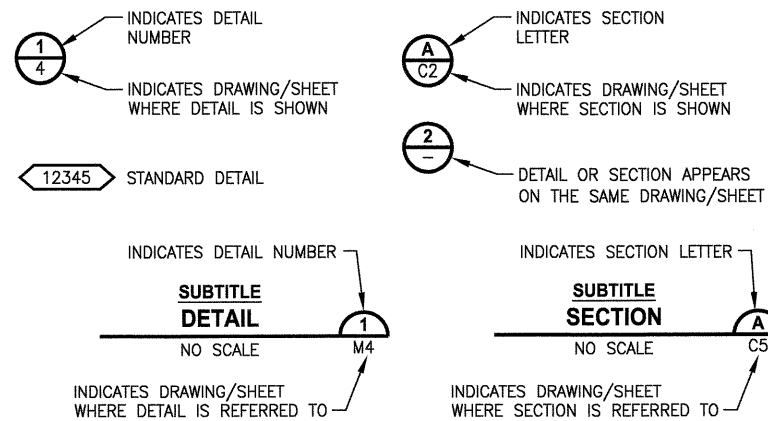
NOV 29 2011

CITY OF ISSAQUAH

ABBREVIATIONS:

ACP	ASPHALT CONCRETE PAVEMENT	PC	POINT OF CURVE
BOC	BACK OF CURB	PT	POINT OF TANGENT
BOW	BACK OF SIDEWALK	P/L	PROPERTY LINE
BVCE	BEGIN VERTICAL CURVE ELEVATION	PVI	POINT OF VERTICAL INTERSECTION
BVCS	BEGIN VERTICAL CURVE STATION	ROW or R/W	RIGHT-OF-WAY
CB	CATCH BASIN	SD	STORM DRAIN
C&G	CURB AND GUTTER	SDMH	STORMWATER MANHOLE
C/L	CENTERLINE	SIM	SIMILAR
CONC	CONCRETE	SS	SANITARY SEWER
CONST	CONSTRUCTION	STA	STATION
CMP	CORRUGATED METAL PIPE	TEL	TELEPHONE
CP	CONCRETE PIPE	TYP	TYPICAL
CSTC	CRUSHED SURFACING TOP COURSE	W	WATER
DIA	DIAMETER	WS	WATER SERVICE
DI, DIP	DUCTILE IRON PIPE	WSDOT	WASHINGTON STATE DEPARTMENT OF TRANSPORTATION
E	EAST, EASTING	PUD	PUBLIC UTILITY DISTRICT
EOA	EDGE OF ASPHALT	TESC	TEMPORARY EROSION AND SEDIMENT CONTROL
EVCE	END VERTICAL CURB ELEVATION	TOW	TOP OF WALL
EVCS	END VERTICAL CURB STATION		
EOG	EDGE OF GRAVEL		
EOP	EDGE OF PAVEMENT		
EX, EXIST	EXISTING		
FOC	FACE OF CURB		
FL	FLANGE, FLOWLINE		
G	GAS		
GB	GRADE BREAK		
HMA	HOT MIX ASPHALT		
IE	INVERT ELEVATION		
LF	LINEAR FEET		
LP	LOW POINT		
LT	LEFT		
ME	MATCH EXISTING		
MIN	MINIMUM		
MON	MONUMENT		
N	NORTH, NORTHING		
N.I.C.	NOT IN CONTRACT		
NST	NOT STEEPER THAN		

DETAIL AND SECTION DESIGNATION



DWG NO.	SHT NO.	SHEET TITLE
GENERAL		
1	G1	COVER SHEET
2	G2	ABBREVIATIONS AND SHEET LIST
3	G3	SHEET INDEX
4	G4	LEGEND
5	G5	SURVEY CONTROL PLAN
6	G6	SURVEY CONTROL PLAN
7	G7	SURVEY CONTROL PLAN
EROSION CONTROL		
8	TE1	TESC PLAN
9	TE2	TESC PLAN
10	TE3	TESC PLAN
11	TE4	TESC PLAN
12	TE5	TESC PLAN
13	TE6	TESC PLAN
14	TE7	TESC PLAN
15	TE8	TESC PLAN
16	TE9	TESC PLAN
17	TE10	TESC PLAN
18	TE11	TESC PLAN
19	TE12	TESC PLAN
20	TE13	TESC NOTES
SITE PREPARATION		
21	SP1	SITE PREPARATION PLAN
22	SP2	SITE PREPARATION PLAN
23	SP3	SITE PREPARATION PLAN
24	SP4	SITE PREPARATION PLAN
25	SP5	SITE PREPARATION PLAN
26	SP6	SITE PREPARATION PLAN
27	SP7	SITE PREPARATION PLAN
28	SP8	SITE PREPARATION PLAN
29	SP9	SITE PREPARATION PLAN
30	SP10	SITE PREPARATION PLAN
31	SP11	SITE PREPARATION PLAN
32	SP12	SITE PREPARATION PLAN
TYPICAL SECTIONS		
33	CS1	TYPICAL CROSS SECTIONS
TRAIL PLAN & PROFILE		
34	AL1	PLAN AND PROFILE
35	AL2	PLAN AND PROFILE
36	AL3	PLAN AND PROFILE
37	AL4	PLAN AND PROFILE
38	AL5	PLAN AND PROFILE
39	AL6	PLAN AND PROFILE
40	AL7	PLAN AND PROFILE
41	AL8	PLAN AND PROFILE
42	AL9	PLAN AND PROFILE
43	AL10	PLAN AND PROFILE
44	AL11	PLAN AND PROFILE
45	AL12	PLAN AND PROFILE
46	AL13	PLAN AND PROFILE
47	AL14	PLAN AND PROFILE
48	AL15	PLAN AND PROFILE
49	AL16	PLAN AND PROFILE
50	AL17	PLAN AND PROFILE
51	AL18	PLAN AND PROFILE
52	AL19	PLAN AND PROFILE
53	AL20	PLAN AND PROFILE
54	AL21	PLAN AND PROFILE
55	AL22	PLAN AND PROFILE
56	AL23	PLAN AND PROFILE
57	AL24	PLAN AND PROFILE
DRAINAGE DETAILS		
58	DD1	DRAINAGE DETAILS
59	DD2	DRAINAGE DETAILS

DWG NO.	SHT NO.	SHEET TITLE
STRUCTURE		
60	WP1	WALL PROFILES
61	WP2	WALL PROFILES
62	WP3	WALL PROFILES
63	WP4	WALL PROFILES
64	WP5	WALL PROFILES
65	WP6	WALL PROFILES
66	WP7	WALL PROFILES
67	WP8	WALL PROFILES
68	WP9	WALL PROFILES
69	WP10	WALL PROFILES
70	WP11	SOLDIER PILE WALL NO. 8 AND 9 LAYOUT TABLE
71	WP12	SOLDIER PILE WALL NO. 10,11,12, AND 13 LAYOUT TABLE
72	WD1	STRUCTURAL EARTH WALL DETAIL AND SCHEDULE
73	S1	SOLDIER PILE WALL TYPICAL PLAN AND ELEVATIONS
74	S2	SOLDIER PILE WALL DETAILS
75	S3	SOLDIER PILE WALL DETAILS AT EXISTING PIPES
PAVEMENT MARKING & SIGNING		
76	PS1	PAVEMENT MARKING & SIGNING PLAN
77	PS2	PAVEMENT MARKING & SIGNING PLAN
78	PS3	PAVEMENT MARKING & SIGNING PLAN
79	PS4	PAVEMENT MARKING & SIGNING PLAN
80	PS5	SIGN SCHEDULE
ELECTRICAL		
81	E1	ELECTRICAL PLAN
MISCELLANEOUS DETAILS		
82	MD1	MISCELLANEOUS DETAILS
83	MD2	MISCELLANEOUS DETAILS
84	MD3	MISCELLANEOUS DETAILS
MITIGATION		
85	MP1	MITIGATION PLAN
86	MP2	MITIGATION PLAN
87	MP3	MITIGATION PLAN
88	MP4	MITIGATION PLAN
89	MP5	MITIGATION PLAN
90	MP6	MITIGATION PLAN
91	MP7	MITIGATION PLANTING DETAILS
92	MP8	WETLAND MITIGATION NOTES
93	MG1	MITIGATION GRADING
94	MG2	MITIGATION GRADING
95	MG3	MITIGATION GRADING
96	MG4	MITIGATION GRADING
TRAFFIC CONTROL		
97	TC1	TRAFFIC CONTROL PLAN
98	TC2	TRAFFIC CONTROL PLAN
99	TC3	TRAFFIC CONTROL PLAN

PLOTTED BY: purgubut DATE: Wednesday, November 23, 2011 8:34:24 AM
 LAYOUT: G2
 PATH: U:\Bak\Projects\Clients\1521-Hing_City\554-1521-075-ELST\99Svec\CADD\Phase 1\Task 02\Draw\



Parametrix
 ENGINEERING · PLANNING · ENVIRONMENTAL SCIENCES
 411 106TH AVENUE N.E., SUITE 1000
 BELLEVUE, WASHINGTON 98004
 T: 425.450.6200 F: 425.450.6393
 www.parametrix.com

PROJECT NAME
**EAST LAKE SAMMAMISH
 MASTER PLAN TRAIL, ISSAQUAH SEGMENT**
 GILMAN BLVD TO ISSAQUAH CITY LIMITS

**ABBREVIATIONS AND
 SHEET LIST**

DRAWING NO.
 2 OF 99
G2

APPROVED

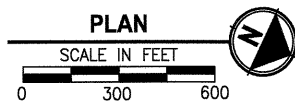
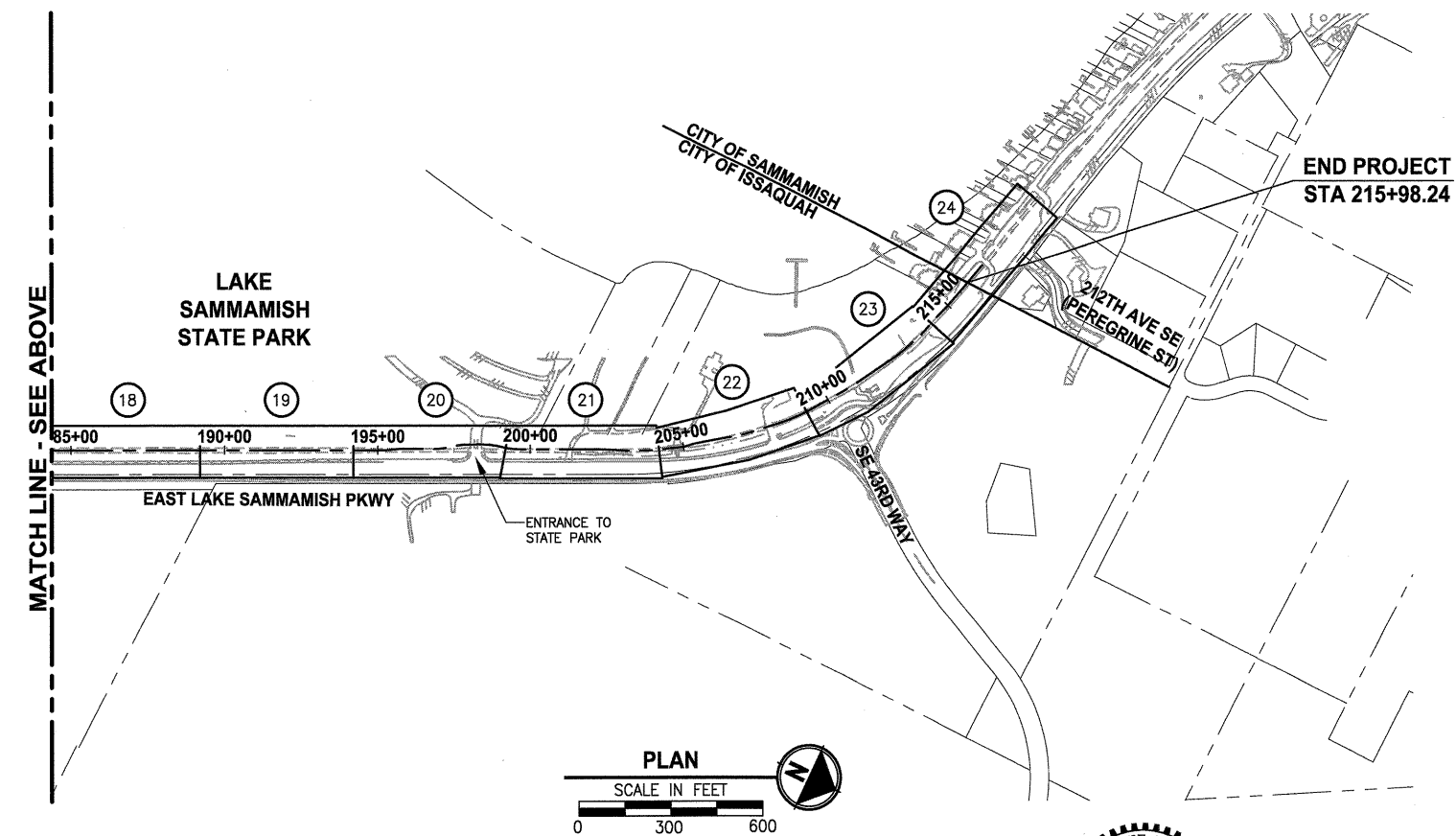
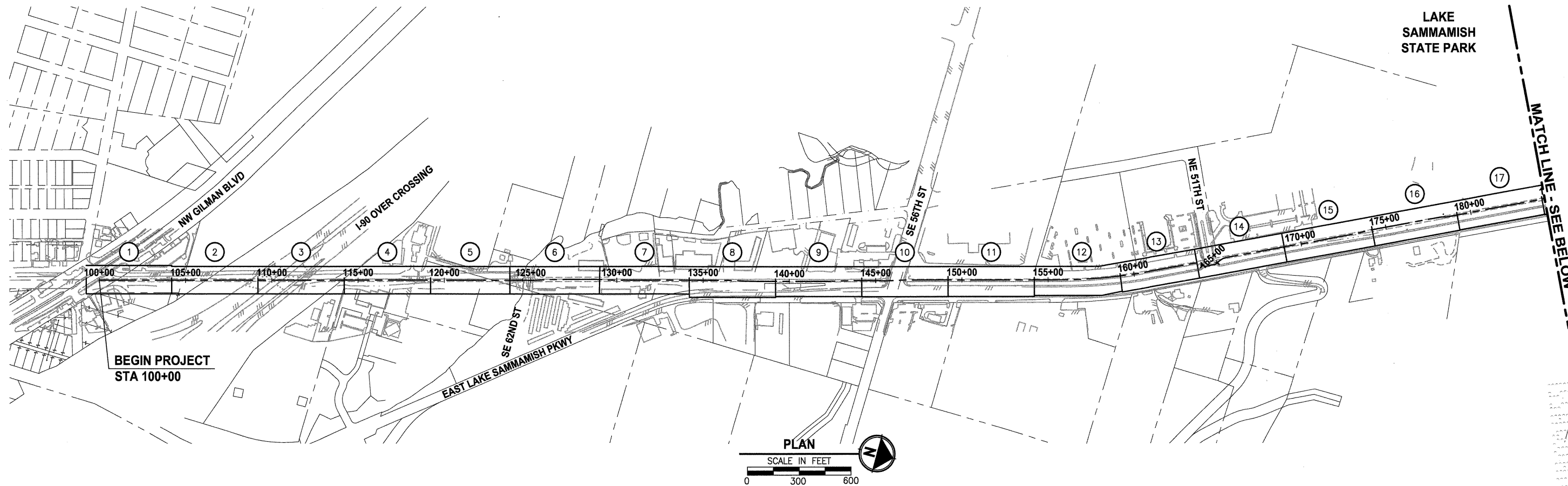
DEC 02 2011

PUBLIC WORKS ENG.
 CITY OF ISSAQUAH

REVISIONS	DATE	BY	DESIGNED
			J. JUN
			B. PURGANAN
			Y. HO
			H. LONGFELLOW

**ONE INCH AT FULL SCALE.
 IF NOT, SCALE ACCORDINGLY**
 FILE NAME
 BL1521075P13T02G-02
 JOB No.
 554-1521-075
 DATE
 NOVEMBER 2011

PORTIONS OF SECTIONS 16, 21 & 28, TWP 24 N., RGE. 6 E., W.M.



SHEET INDEX TABLE

	TE SC PLAN	SITE PREPARATION PLAN	PLAN AND PROFILE	PAVEMENT MARKING AND SIGNING PLAN	ELECTRICAL PLAN	MITIGATION PLANTING PLAN	MITIGATION GRADING	TRAFFIC CONTROL PLAN
①	TE1	SP1	AL1	PS1	-	MP1	-	-
②	TE1	SP1	AL2	-	-	MP1	-	-
③	TE2	SP2	AL3	PS1	-	-	-	-
④	TE2	SP2	AL4	PS1	-	-	-	-
⑤	TE3	SP3	AL5	PS1, PS2	-	-	-	-
⑥	TE3	SP3	AL6	PS2	-	MP1	-	-
⑦	TE4	SP4	AL7	-	-	-	-	-
⑧	TE4	SP4	AL8	-	-	-	-	-
⑨	TE5	SP5	AL9	PS3	-	-	-	-
⑩	TE5	SP5	AL10	PS3	-	MP2	-	-
⑪	TE6	SP6	AL11	-	-	MP3	-	-
⑫	TE6	SP6	AL12	-	-	MP3	-	-
⑬	TE7	SP7	AL13	PS3	E1	MP3, MP4	-	TC1
⑭	TE7	SP7	AL14	PS3	E1	MP4	-	TC1
⑮	TE8	SP8	AL15	PS3	-	MP4, MP5	MG1, MG2	-
⑯	TE8	SP8	AL16	-	-	MP5	MG1, MG2, MG3	-
⑰	TE9	SP9	AL17	-	-	MP5, MP6	MG4	-
⑱	TE9	SP9	AL18	-	-	MP6	-	-
⑲	TE10	SP10	AL19	-	-	-	-	-
⑳	TE10	SP10	AL20	PS4	-	MP6	-	TC2, TC3
㉑	TE11	SP11	AL21	PS4	-	MP6, MP7	-	TC2, TC3
㉒	TE11	SP11	AL22	PS4	-	-	-	-
㉓	TE12	SP12	AL23	PS4	-	-	-	-
㉔	TE12	SP12	AL24	-	-	-	-	-



Parametric
 ENGINEERING · PLANNING · ENVIRONMENTAL SCIENCES
 411 108TH AVENUE N.E., SUITE 1000
 BELLEVUE, WASHINGTON 98004
 T: 425.458.8200 F: 425.458.6363
 www.parametric.com

PROJECT NAME
**EAST LAKE SAMMAMISH
 MASTER PLAN TRAIL, ISSAQUAH SEGMENT**
 GILMAN BLVD TO ISSAQUAH CITY LIMITS

SHEET INDEX

DRAWING NO.
 3 OF 99
G3

LAYOUT: G3 PATH: U:\Bell\Projects\Clients\1521-King_City\554-1521-075-ELST\985\CA\DD\Phase 13\Task 02\Draw\ PLOTTED BY: purgaban DATE: Wednesday, November 23, 2011 8:36:55 AM

REVISIONS	DATE	BY	DESIGNED
			J. JUN
			B. PURGANAN
			Y. HO
			H. LONGFELLOW

ONE INCH AT FULL SCALE,
 IF NOT, SCALE ACCORDINGLY
 FILE NAME
 BL1521075P13T02G-03
 JOB No.
 554-1521-075
 DATE
 NOVEMBER 2011

PATH: U:\Ball\Projects\Clients\1521-King_City\554-1521-075-ELST\98Sves\CADD\Phase 13\Task 02\Draw\ PLOTTED BY: purgabut DATE: Wednesday, November 23, 2011 8:37:29 AM LAYOUT: G4

LEGEND

DESCRIPTION	PROPOSED	EXISTING
ROW LINE		R/W
PROPERTY LINE		P/L
FOUND MONUMENTS		⊕ ⊗
REBAR & CAP		⊗
HUB & TACK		⊠
PK NAIL		⊗
PROPERTY CORNER		●
STREAM BUFFER		
STREAM	---	---
EDGE OF WATER		
WETLAND FLAG		☐
WETLAND BUFFER	---	
ORDINARY HIGH WATER MARK		OHWM
FLOODWAY BOUNDARY	---	
DITCH LINE	---	
JURISDICTIONAL DITCH	---	
STORM DRAIN LINE	---	SD
CULVERT	==	==
QUARRY SPALL		
CATCH BASIN, TYPE 1	■	■
CATCH BASIN, TYPE 2	⊠	⊠
INLET PROTECTION	⊗	
SANITARY SEWER LINE		SS
SANITARY SEWER MANHOLE	⊙	⊙
SANITARY SEWER VAULT		SS
CLEANOUT	●	⊙
CONTOURS MAJOR	10	10
CONTOURS MINOR	2	2
SILT FENCE	-□-□-□-□-	
HIGH VISIBILITY FENCE	-X-X-X-	
CLEARING AND GRUBBING LIMITS	-○-○-○-○-	
FILL LINE	---F---F---F---	
CUT LINE	---C---C---C---	
SAWCUT LINE	///	
ASPHALT EDGE	==	///
CONCRETE LINE	==	---
CURB AND GUTTER LINE	==	---
EDGE OF PATCH	---	---
EDGE OF GRAVEL	---	---
ROCKERY		

LEGEND

DESCRIPTION	PROPOSED	EXISTING
BARB WIRE FENCE LINE		-x-x-x-
SPLIT RAIL FENCE LINE	-□-□-□-	-//-//-//-
CHAIN LINK FENCE LINE	-○-○-○-	-○-○-○-
HOG WIRE FENCE LINE	-○-○-○-	-○-○-○-
WOOD GUARDRAIL	-□-□-□-	-□-□-□-
GUY ANCHOR		→
POWER POLE WITH LIGHT		
FLOOD LIGHT		
UTILITY POLE		○
PP W/ UG DROP		⊙
PP W/ UG DROP & XMFR		⊙
OVERHEAD POWER		OP
POWER		P
POWER VAULT		⊠
POWER TRANSFORMER		⊠
POWER MANHOLE		⊙
POWER HANDHOLE		⊠
POWER CABINET		PWR CAB
POWER RISER		PR
POWER METER		⊠
SOLID LID J-BOX		⊠
LUMINAIRE	↔	
TELEPHONE VAULT		T
TELEPHONE RISER		TR
TELEPHONE MANHOLE		T
TELEPHONE		T
TV RISER		TV
TV		TV
GAS VALVE		⊠
GAS		G
WATER LINE		W
FIRE HYDRANT		
WATER METER		
WATER VALVE		⊗
WATER BLOW OFF VALVE		
WATER POST INDICATOR		
SPRINKLER HEAD ROT=90		
IRRIGATION CONTROL VALVE		⊠

LEGEND

DESCRIPTION	PROPOSED	EXISTING
TRAFFIC SIGNAL POLE W/ LAMP		
TRAFFIC SIGNAL POLE		
TRAFFIC CONTROL LOOP (SQ)		⊠
TRAFFIC CONTROL CABINET		⊠
PEDESTRIAN POLE		⊙
MONITORING WELL		⊙
SURFACE POST		○
SIGN	◀	⊠
SKIP LANE LINE		---
SOLID LANE LINE		---
FOG LINE		---
LTO ARROW		
STO ARROW	←	
RTO ARROW		
MAILBOX	■	■
TREES		
WETLAND SYMBOL		
WETLAND BOUNDARY		---
VEGETATION		---
STRUCTURAL EARTH WALL		
SOLDIER PILE WALL		
RIP RAP		
ROCKERY		
HANDICAPPED SYMBOL		
WHEELCHAIR RAMP		
BUILDING LINE		
CONCRETE STAIR LINE		
WOOD STAIRWAY		
REMOVE ASPHALT		
CEMENT CONCRETE SIDEWALK		
RAMP DETECTABLE WARNING		
RESTORATION PLANTING AREA		

REVISIONS	DATE	BY	DESIGNED
			J. JUN
			B. PURGANAN
			Y. HO
			H. LONGFELLOW

ONE INCH AT FULL SCALE.
IF NOT, SCALE ACCORDINGLY
FILE NAME: BL1521075P13T02G-04
JOB No: 554-1521-075
DATE: NOVEMBER 2011

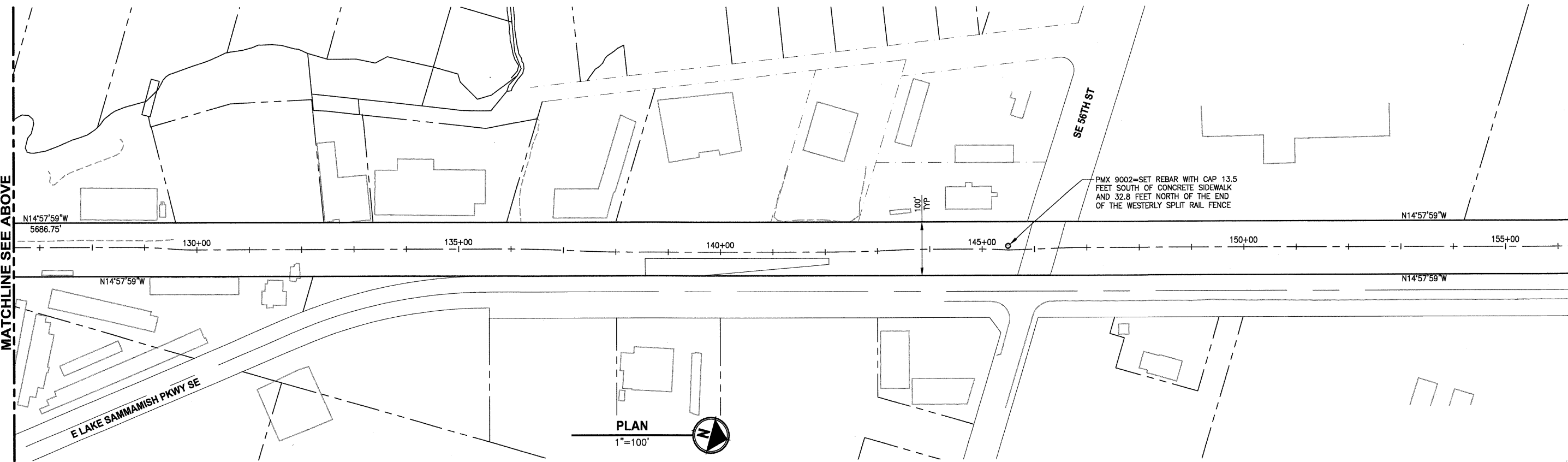
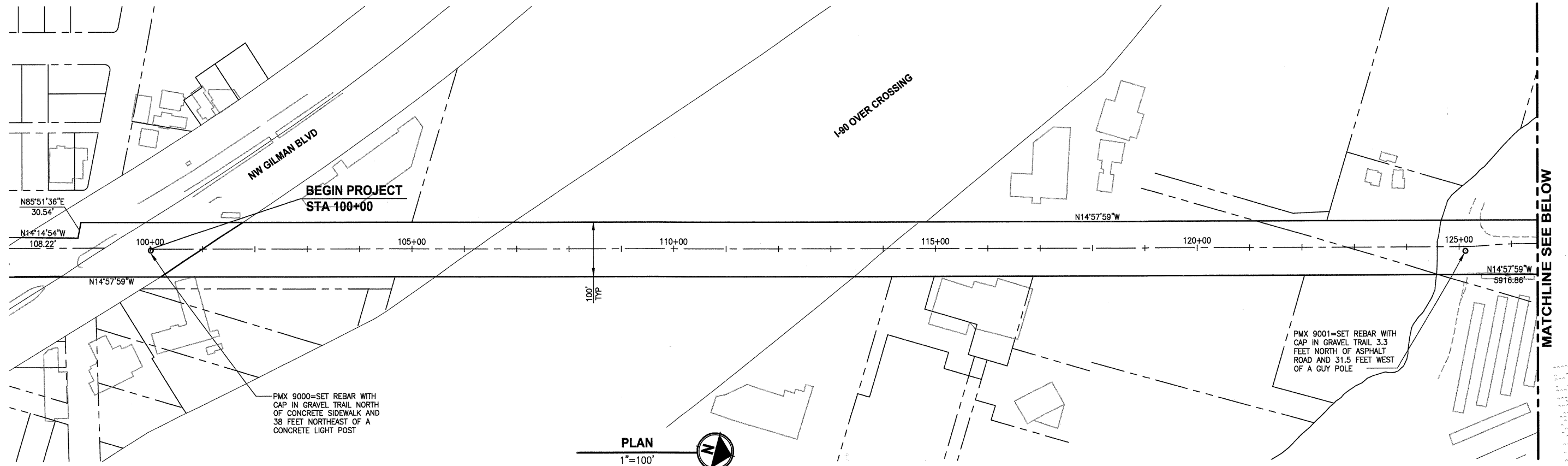


Parametrix
ENGINEERING · PLANNING · ENVIRONMENTAL SCIENCES
411 106TH AVENUE N.E., SUITE 1900
BELLEVUE, WASHINGTON 98004
T. 425.458.6200 F. 425.458.6363
www.parametrix.com

PROJECT NAME
**EAST LAKE SAMMAMISH
MASTER PLAN TRAIL, ISSAQUAH SEGMENT**
GILMAN BLVD TO ISSAQUAH CITY LIMITS

LEGEND

PORTIONS OF SECTIONS 16, 21 & 28, TWP 24 N., RGE. 6 E., W.M.



Parametrix
 ENGINEERING · PLANNING · ENVIRONMENTAL SCIENCES
 411 106TH AVENUE N.E., SUITE 1800
 BELLEVUE, WASHINGTON 98004
 T. 425-458-8200 F. 425-458-6383
 www.parametrix.com

PROJECT NAME
**EAST LAKE SAMMAMISH
 MASTER PLAN TRAIL, ISSAQUAH SEGMENT**
 GILMAN BLVD TO ISSAQUAH CITY LIMITS

SURVEY CONTROL PLAN

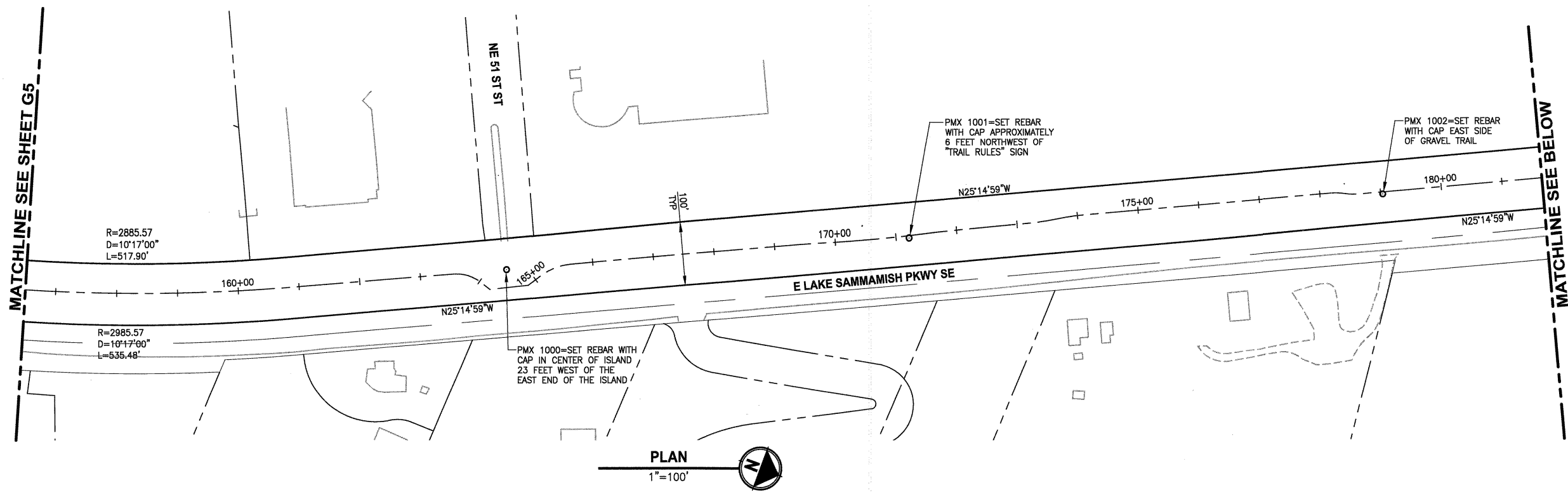
DRAWING NO.
 5 OF 99
G5

LAYOUT: G5
 PATH: U:\Rail\Projects\Clients\1521-King City\554-1521-075-ELST\999999\CA00\Phase 13\Task 02\Draw\ PLOTTED BY: purgabut DATE: Wednesday, November 23, 2011 8:38:06 AM

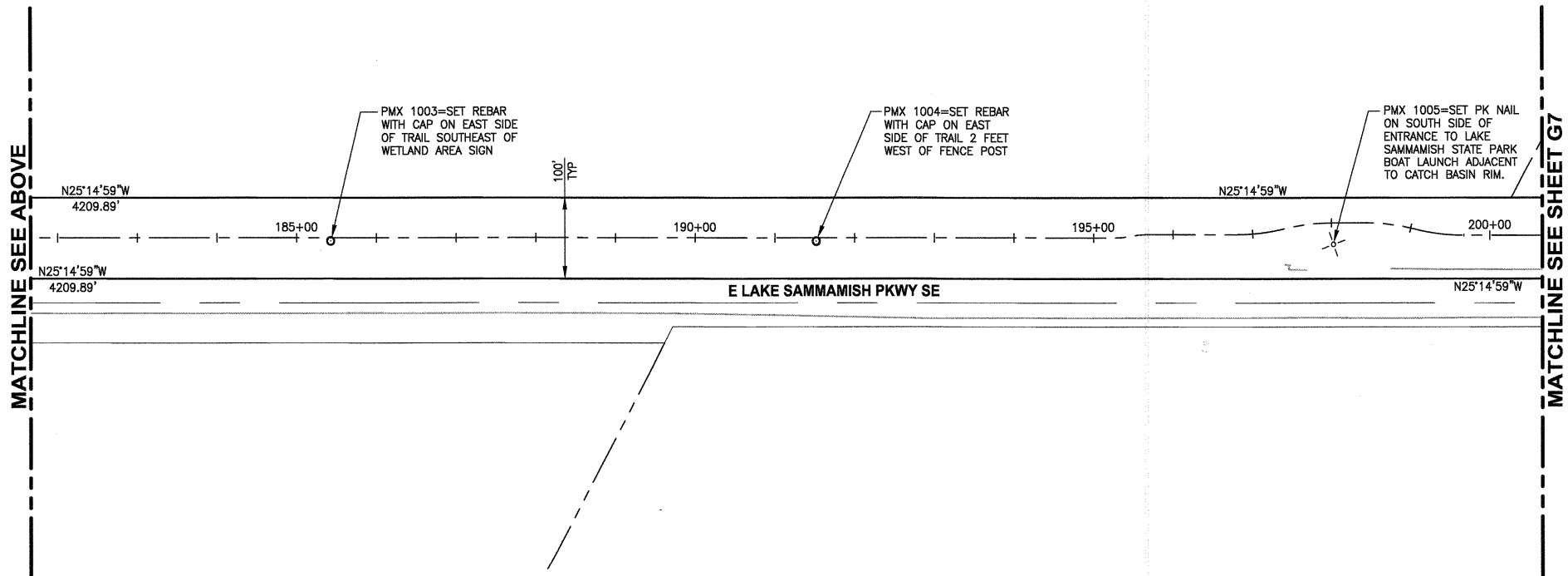
REVISIONS	DATE	BY	DESIGNED
			S. McCASKEY
			DRAWN S. SIRE
			CHECKED Y. HO
			APPROVED H. LONGFELLOW

ONE INCH AT FULL SCALE.
 IF NOT, SCALE ACCORDINGLY
 FILE NAME
 BL1521075P13T02G-05
 JOB No.
 554-1521-075
 DATE
 NOVEMBER 2011

PORTIONS OF SECTIONS 16, 21 & 28, TWP 24 N., RGE. 6 E., W.M.



PLAN
1"=100'



PLAN
1"=100'



Parametrix
ENGINEERING . PLANNING . ENVIRONMENTAL SCIENCES
411 108TH AVENUE N.E., SUITE 1000
BELLEVUE, WASHINGTON 98004
T: 425.455.6200 F: 425.455.6363
www.parametrix.com

PROJECT NAME
**EAST LAKE SAMMAMISH
MASTER PLAN TRAIL, ISSAQUAH SEGMENT**
GILMAN BLVD TO ISSAQUAH CITY LIMITS

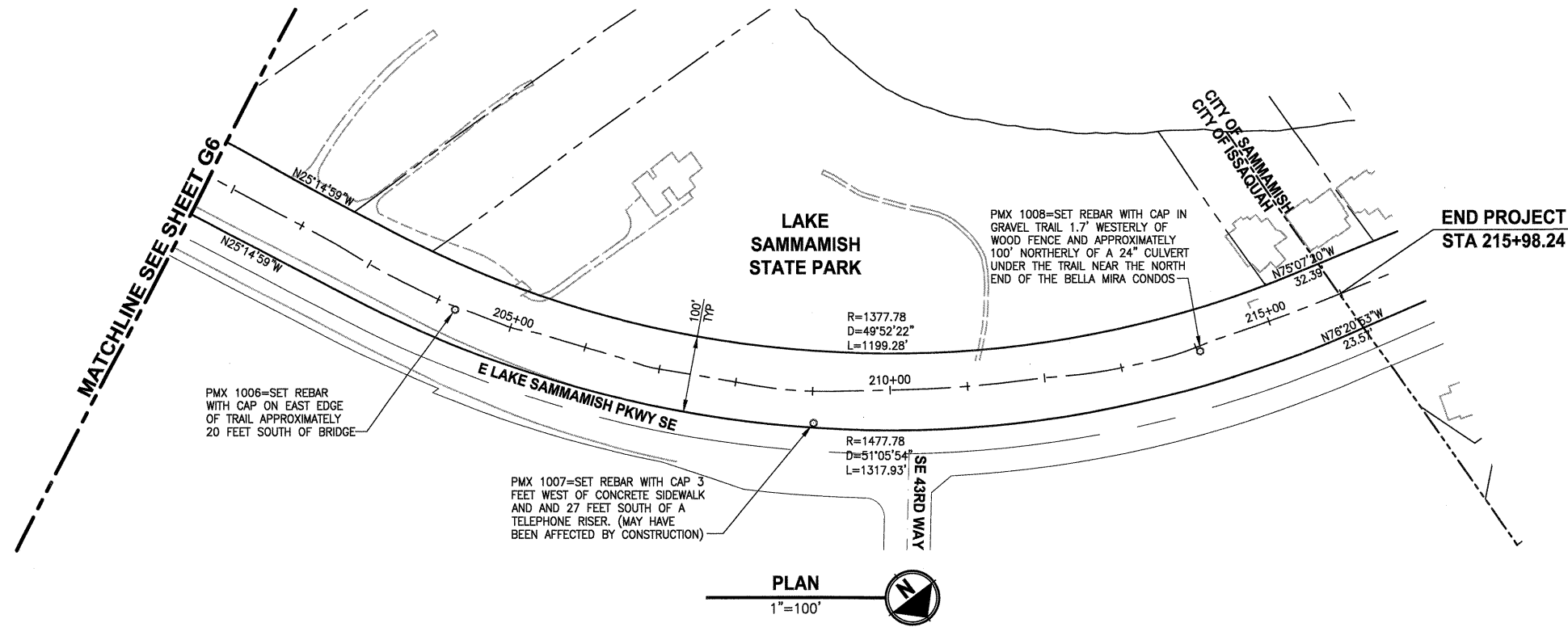
SURVEY CONTROL PLAN

DRAWING NO.
6 OF 99
G6

LAYOUT: G6
PATH: U:\Belt\Projects\Clients\1521-King_City\554-1521-075-ELST\985ves\CA00\Phase 13\Task 02\DWG\ PLOTTED BY: purgabut DATE: Wednesday, November 23, 2011 8:38:29 AM

REVISIONS	DATE	BY	DESIGNED
			S. McCASKEY
			S. SIRES
			Y. HO
			H. LONGFELLOW

ONE INCH AT FULL SCALE.
IF NOT, SCALE ACCORDINGLY
FILE NAME
BL1521075P13T02G-05
JOB No.
554-1521-075
DATE
NOVEMBER 2011



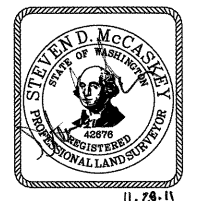
LAYOUT: 07
 PATH: U:\Buil\Projects\Clients\1521-43rd-City\554-1521-075-ELST\995\ca\CADD\Phase 13\Task 02\Draw\ PLOTTED BY: purgubut DATE: Wednesday, November 23, 2011 8:39:02 AM

CONTROL POINTS

Point	Northing	Easting	Elevation	Description
1000	205410.444	1340870.200	52.69	RC
1001	206012.564	1340591.807	49.73	RC
1002	206718.692	1340257.362	49.51	RC
1003	207296.826	1339984.843	45.87	RC
1004	207848.065	1339725.047	46.01	RC
1005	208436.886	1339451.433	48.02	PK
1006	208996.566	1339181.161	46.45	RC
1007	209394.049	1338902.541	51.51	RC
1008	209820.954	1338448.736	46.25	RC
9000	198226.029	1342641.780	74.41	RC
9001	201652.983	1341998.106	61.69	RC
9002	203617.219	1341458.742	55.24	RC

SURVEY NOTES:

- HORIZONTAL DATUM: NAD83 (CORS).
- RTK CORRECTIONS OBTAINED FROM NGS CORS ID POINT "SEAT" ON OCTOBER 3, 2007.
- VERTICAL DATUM: NAVD88
- WSDOT SITE BENCHMARKS HELD FOR THIS SURVEY ARE NOS. 2355, 6762, 6294, AND 617.
- METHODOLOGY: FIELD MEASUREMENTS FOR THIS SURVEY WERE PERFORMED USING TRIMBLE 5800 RTK WITH CELL PHONE AND LIECA TCRA 1103 FULL ROBOTIC 3 SECOND TOTAL STATION IN CONFORMANCE WITH ACCEPTED SURVEY STANDARDS AS SPECIFIED BY WAC 332-130 FOR LINEAR AND ANGULAR CLOSURE.
- THE RIGHT-OF-WAY DIMENSIONS SHOWN WERE PROVIDED BY KING COUNTY SURVEY AND DO NOT REPRESENT A BOUNDARY SURVEY PERFORMED BY PARAMETRIX.



Parametrix
 ENGINEERING . PLANNING . ENVIRONMENTAL SCIENCES
 411 108TH AVENUE N.E., SUITE 1800
 BELLEVUE, WASHINGTON 98004
 T. 425.458.8200 F. 425.458.6363
 www.parametrix.com

PROJECT NAME
**EAST LAKE SAMMAMISH
 MASTER PLAN TRAIL, ISSAQUAH SEGMENT**
 GILMAN BLVD TO ISSAQUAH CITY LIMITS

SURVEY CONTROL PLAN

DRAWING NO.
 7 OF 99
G7

REVISIONS	DATE	BY	DESIGNED
			S. McCASKEY
			S. SIRES
			Y. HO
			H. LONGFELLOW

ONE INCH AT FULL SCALE.
 IF NOT, SCALE ACCORDINGLY
 FILE NAME
 BL1521075P13T02G-05
 JOB No.
 554-1521-075
 DATE
 NOVEMBER 2011