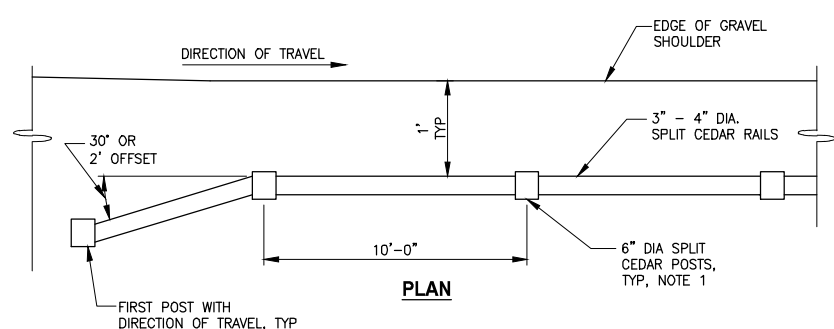
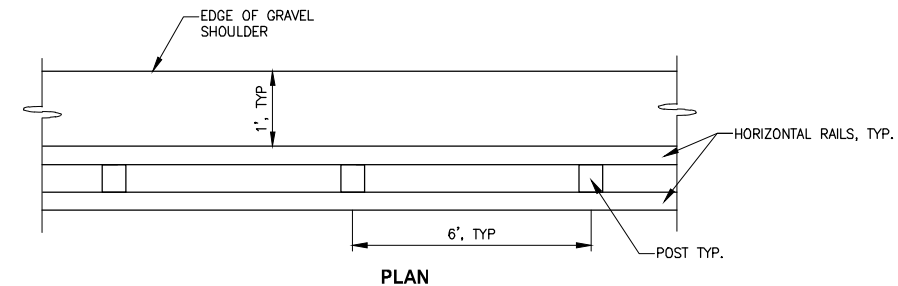


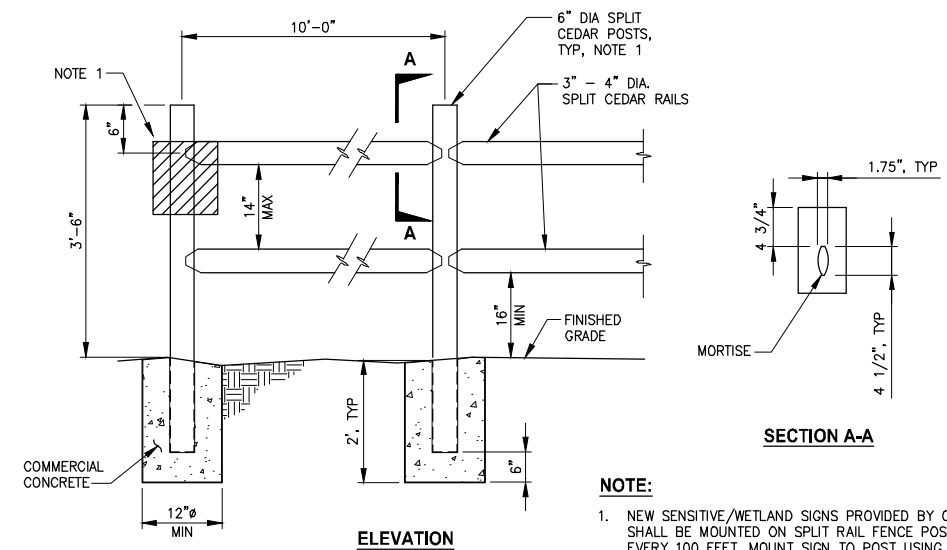
PATH: U:\PSO\Projects\Clients\1521-KingCo\554-1521-075-ELST\99Specs\CADD\Phase 19\T03_Civil\DWG\ PLOTTED BY: purgobut DATE: Friday, July 07, 2017 5:41:20 PM LAYOUT: MD1



PLAN

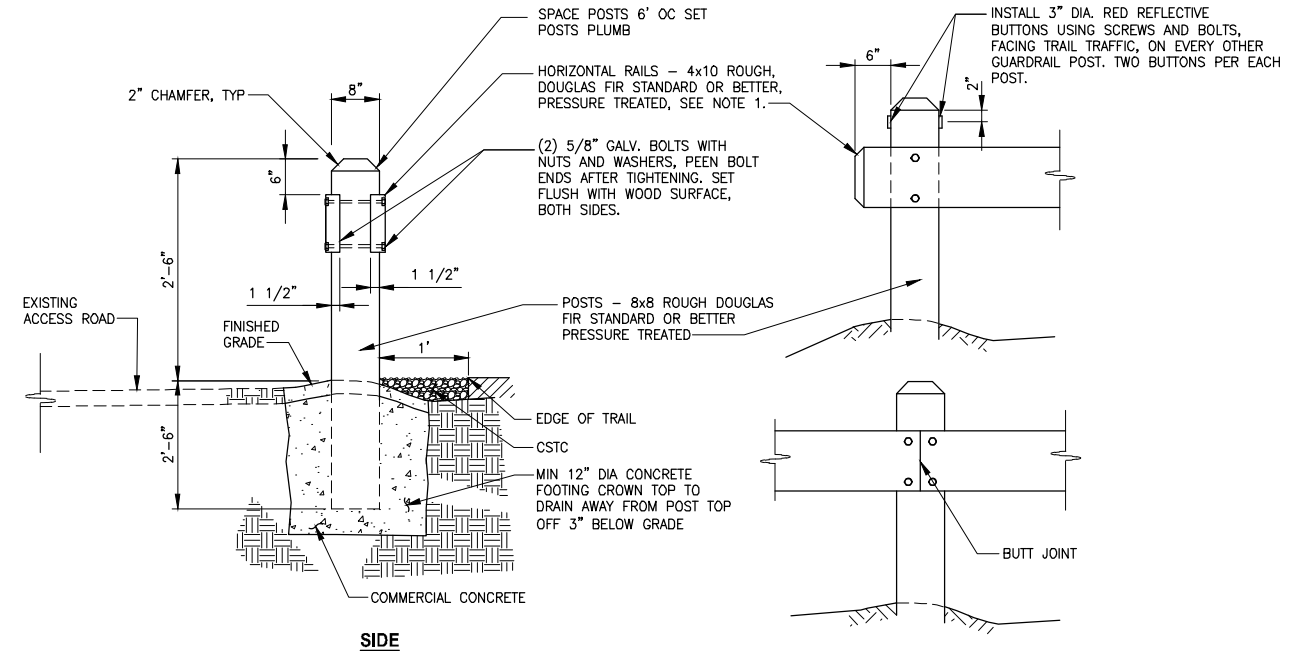


PLAN



ELEVATION

SECTION A-A



SIDE

NOTES:

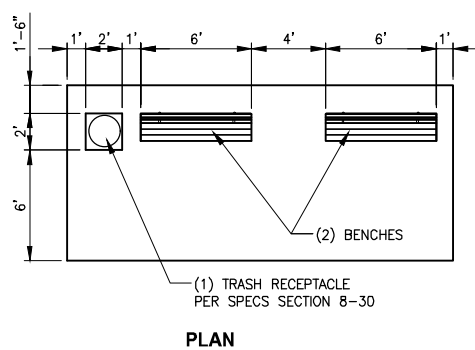
- ALLOW FOR 10 1/4\"/>
- ALL FIELD DRILLING OR CUT SECTIONS OF GUARDRAIL SHALL BE TREATED WITH A WOOD PRESERVATIVE PER SECTION 9-09.3.

SPLIT RAIL FENCE-INSTALLATION ON GROUND
DETAIL 1

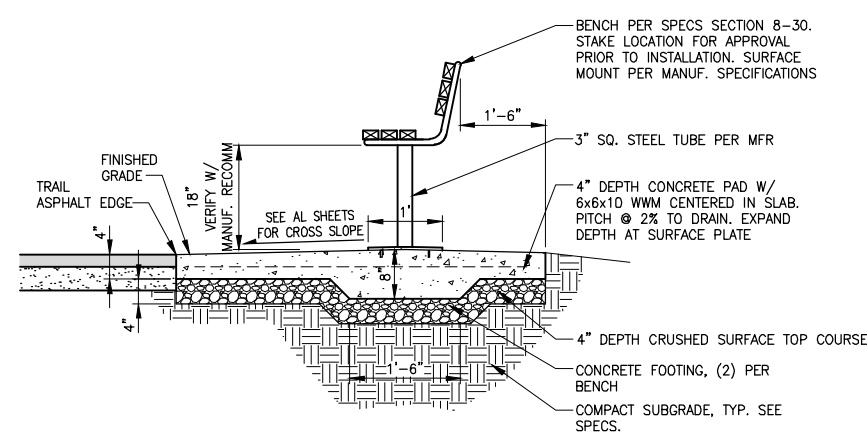
NOT TO SCALE

WOOD GUARDRAIL
DETAIL 2

NOT TO SCALE

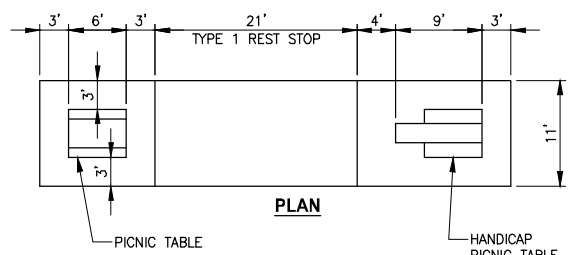


PLAN

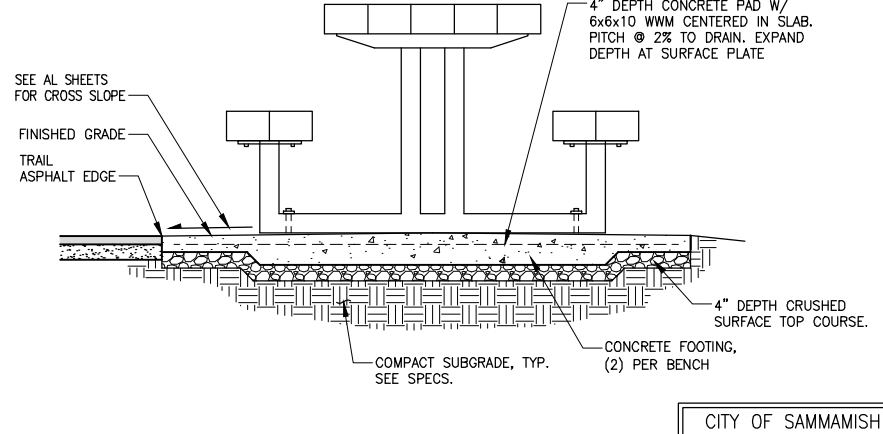


TYPE 1 REST STOP
DETAIL 3

NOT TO SCALE



PLAN



TYPE 2 REST STOP
DETAIL 4

NOT TO SCALE

CITY OF SAMMAMISH APPROVAL	
City Engineer _____	Date _____
Community Development _____	Date _____

REVISED 60% REVIEW SUBMITTAL
NOT FOR CONSTRUCTION

REVISIONS	DATE	BY	DESIGNED
			M. TSUN
			B. PURGANAN
			P. JOHANNESSEN
			Y. HO

ONE INCH AT FULL SCALE, IF NOT, SCALE ACCORDINGLY
FILE NAME: BL1521075P19T03MD-01
JOB No. 554-1521-075 P19 T03
DATE: JULY 2017

PRELIMINARY

Parametrix
ENGINEERING · PLANNING · ENVIRONMENTAL SCIENCES
719 2ND AVENUE, SUITE 200 | SEATTLE, WA 98104
P 206.394.3700
WWW.PARAMETRIX.COM

PROJECT NAME
**EAST LAKE SAMMAMISH
MASTER PLAN TRAIL
SOUTH SAMMAMISH SEGMENT B**
SAMMAMISH, WA

MISCELLANEOUS DETAILS

SHEET NO.
134 OF 158
MD1