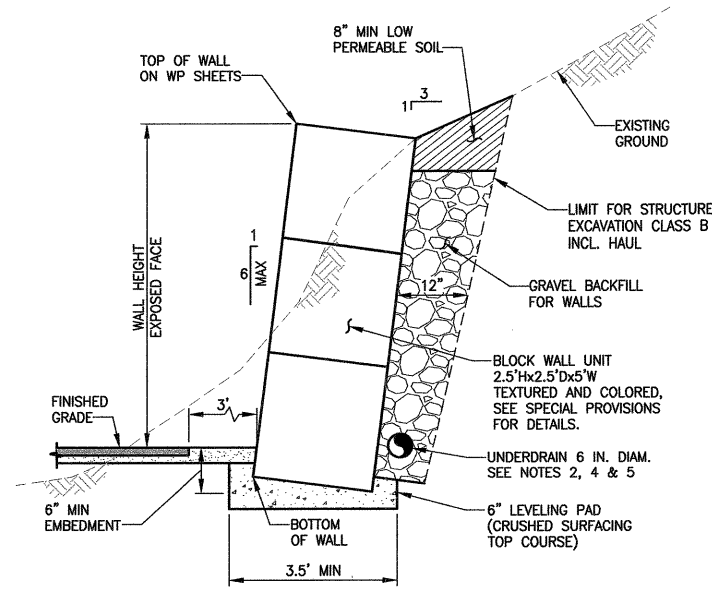
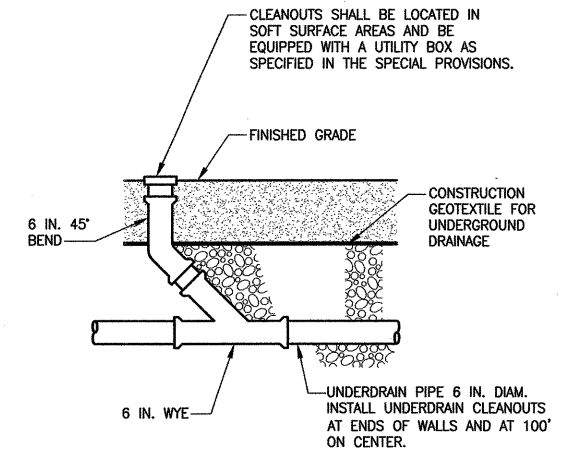


**STRUCTURAL EARTH WALL - FILL WALL**  
**DETAIL 1**  
NO SCALE



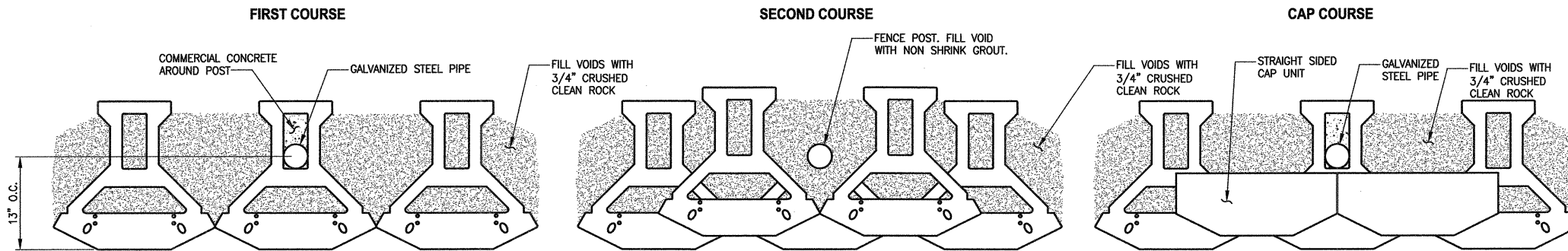
**GRAVITY BLOCK WALL - CUT WALL**  
**DETAIL 2**  
NO SCALE



**UNDERDRAIN CLEANOUT**  
**DETAIL 3**  
NO SCALE

**NOTES:**

- RESTORE EXISTING GROUND WITH NATIVE SOIL BACKFILL AND SEEDING. SEE WP SHEETS.
- SEE UNDERDRAIN CLEANOUT DETAIL 3, THIS SHEET.
- UNDERDRAIN CLEANOUT LIDS SHALL BE INSTALLED ALONG THE BACK OF WALL BLOCK AND SHALL NOT BE IN TRAIL HMA PAVEMENT.
- FILL BLOCK UNITS WITH UNIT DRAINAGE FILL. SEE SPECIAL PROVISIONS FOR WALL DESIGN REQUIREMENTS. ALL CONSTRUCTION MUST CONFORM TO MANUFACTURER'S SPECIFIC REQUIREMENTS.
- POST SHALL HAVE MIN 24" DEPTH. SEE DETAIL 4 THIS SHEET.
- SEE WP SHEETS FOR TOP AND BOTTOM OF WALL ELEVATIONS.
- SEE OFFSET DISTANCE ON SHEET WD2 FOR OUTSIDE FACE OF CAP BLOCK. BOTTOM OF WALL OFFSET DISTANCE SHALL BE SURVEYED AND STAKED BASED ON WALL HEIGHT SHOWN ON WP SHEETS AND WALL BATTER AS SHOWN IN DETAIL 1.
- SEE WALL SCHEDULE ON SHEET WD2.



**PLAN**  
**REAR COURSE POSITIONING**  
**DETAIL 4**  
NO SCALE

**DESIGN LOAD FOR FILL WALLS**

LIVELOAD FOR TRAIL	100 PSF
LIVELOAD FOR DRIVEWAY	250 PSF
DEADLOAD	NONE

CITY OF SAMMAMISH APPROVAL

*Ronald Ripston* 9-16-13  
City Engineer Date

*Mona Davis* 9-16-13  
Community Development Date

DPER ACTIVITY NUMBER  
GRDE12-0017/SHOR12-0003  
FEDERAL AID # STPE-2017 (126)

LAYOUT: WDI PATH: U:\Belt\Projects\Clients\1521-King\_City\1521-King\_City\1521-075-ELST\995\sheet\CADD\Phase 15\Task 03.Dwg PLOTTED BY: purgabut DATE: Friday, September 13, 2013 2:15:06 PM

REVISIONS	DATE	BY	DESIGNED
			J. JUN
			B. PURGANAN
			Y. HO
			J. DVORAK

ONE INCH AT FULL SCALE.  
IF NOT, SCALE ACCORDINGLY

FILE NAME  
BL1521075P15T03WD-01

JOB No.  
554-1521-075-P15T04B

DATE  
SEPTEMBER 2013



**Parametrix**  
ENGINEERING, PLANNING, ENVIRONMENTAL SCIENCES

411 108TH AVENUE N.E., SUITE 1800  
BELLEVUE, WASHINGTON 98004  
T: 425-456-6200 F: 425-456-6383  
www.parametrix.com

PROJECT NAME  
**EAST LAKE SAMMAMISH  
MASTER PLAN TRAIL  
NORTH SAMMAMISH SEGMENT**  
SAMMAMISH, WA

**STRUCTURAL EARTH WALL  
DETAILS**

SHEET NO.  
100 OF 127

**WD1**

WALL SCHEDULE

WALL #	ALIGNMENT	BEGIN STA	END STA	OFFSET*	SIDE	EXPOSED WALL HEIGHT RANGE	FILL/CUT	NOTE
WALL 1	A-LINE	472+05.50	472+25.00	11.0'	LT	0.0' - 3.0'	FILL	STRUCTURAL EARTH WALL
WALL 1A	A-LINE	476+00.50	476+69.50	11.0'	LT	2.0' - 4.0'	FILL	STRUCTURAL EARTH WALL
WALL 1B	A-LINE	476+69.50	477+10.00	17.0'	LT	1.0' - 4.0'	FILL	STRUCTURAL EARTH WALL
WALL 2	A-LINE	479+50.00	479+63.50	17.0'	LT	5.0'	FILL	STRUCTURAL EARTH WALL
WALL 2A	A-LINE	479+63.50	480+52.00	11.0'	LT	1.5' - 4.0'	FILL	STRUCTURAL EARTH WALL
WALL 3	A1-LINE	10+83.30	11+13.71	11.0/21.4'	LT	1.5' - 4.5'	FILL	STRUCTURAL EARTH WALL, SEE AL PLAN FOR ANGLE POINTS
WALL 4	A1-LINE	11+57.94	12+66.98	21.9/11.0'	LT	1.0' - 5.0'	FILL	STRUCTURAL EARTH WALL, SEE AL PLAN FOR ANGLE POINTS
WALL 4A	A-LINE	485+07.00	487+24.50	11.0'	LT	1.0' - 5.5'	FILL	STRUCTURAL EARTH WALL
WALL 5	B-LINE	20+13.81	20+97.81	7.5'	LT	0.0' - 5.0'	FILL	STRUCTURAL EARTH WALL
WALL 6	A-LINE	483+29.00	501+07.50	11.0'	LT	1.5' - 7.5'	FILL	STRUCTURAL EARTH WALL
WALL 6A	A-LINE	503+19.45	503+52.47	10.0'	LT	0.0' - 3.5'	FILL	STRUCTURAL EARTH WALL, TAPER TO MATCH BOX CULVERT WIDTH
WALL 6B	A-LINE	503+20.97	503+55.45	10.0'	RT	0.0' - 1.0'	FILL	STRUCTURAL EARTH WALL, TAPER TO MATCH BOX CULVERT WIDTH
WALL 7	A-LINE	504+42.50	504+78.28	11.0'	LT	0.5' - 2.0'	FILL	STRUCTURAL EARTH WALL
WALL 7A	A2-LINE	20+00.00	20+63.30	11.0'	LT	0.5' - 2.0'	FILL	STRUCTURAL EARTH WALL
WALL 8	A2-LINE	23+43.61	24+07.76	9.0'	RT	2.0' - 4.0'	CUT	GRAVITY BLOCK WALL
WALL 8A	A-LINE	508+98.23	509+57.00	9.0'	RT	2.0' - 4.0'	CUT	GRAVITY BLOCK WALL
WALL 9	A-LINE	509+50.00	510+85.50	11.0'	LT	0.5' - 3.5'	FILL	STRUCTURAL EARTH WALL
WALL 10	A-LINE	510+48.43	510+63.43	11.0'	RT	7.0'	FILL	REINFORCE CONCRETE RETAINING WALL
WALL 11	A3-LINE	30+25.00	30+90.00	9.0'	RT	3.0' - 4.5'	CUT	GRAVITY BLOCK WALL
WALL 12	A3-LINE	31+40.00	33+00.00	9.0'	RT	2.5' - 4.0'	CUT	GRAVITY BLOCK WALL
WALL 13	A-LINE	516+68.00	517+32.50	11.0'	LT	0.5' - 3.5'	FILL	STRUCTURAL EARTH WALL
WALL 13A	A-LINE	517+32.50	517+88.75	15.5'	LT	2.0' - 6.0'	FILL	STRUCTURAL EARTH WALL
WALL 13B	A4-LINE	40+00	40+35.25	15.5'	LT	0.5' - 6.0'	FILL	STRUCTURAL EARTH WALL
WALL 14	A4-LINE	41+93.00	42+58.00	11.0'	LT	1.5' - 3.0'	FILL	STRUCTURAL EARTH WALL
WALL 15	A4-LINE	43+53.00	44+16.00	11.0'	LT	1.0' - 4.5'	FILL	STRUCTURAL EARTH WALL
WALL 16	A4-LINE	44+58.64	44+90.36	11.0'	LT	3.0' - 8.0'	FILL	STRUCTURAL EARTH WALL
WALL 16A	A-LINE	522+78.22	528+19.50	11.0'	LT	0.5' - 9.5'	FILL	STRUCTURAL EARTH WALL
WALL 16B	A-LINE	525+49.18	525+71.88	10.0'	RT	0.0' - 1.0'	FILL	STRUCTURAL EARTH WALL, TAPER TO MATCH BOX CULVERT WIDTH
WALL 16C	A-LINE	528+04.28	528+20.78	10.0'	RT	0.0' - 0.5'	FILL	STRUCTURAL EARTH WALL, TAPER TO MATCH BOX CULVERT WIDTH
WALL 16D	A-LINE	532+12.00	537+08.50	11.0'	LT	1.5' - 6.5'	FILL	STRUCTURAL EARTH WALL
WALL 17	A-LINE	537+55.00	540+61.00	11.0'	LT	1.5' - 6.0'	FILL	STRUCTURAL EARTH WALL
WALL 17A	A-LINE	538+97.86	539+32.36	10.0'	RT	0.0' - 0.5'	FILL	STRUCTURAL EARTH WALL, TAPER TO MATCH BOX CULVERT WIDTH
WALL 18	A-LINE	542+00.00	547+00.00	9.0'	LT	3.5' - 6.0'	CUT	GRAVITY BLOCK WALL
WALL 19	A-LINE	550+83.50	554+00.00	11.0'	RT	2.0' - 7.0'	FILL	STRUCTURAL EARTH WALL
WALL 20	A-LINE	555+04.00	555+79.00	9.0'	RT	3.5' - 4.0'	CUT	GRAVITY BLOCK WALL
WALL 21	A-LINE	556+80.50	563+01.50	11.0'	LT	1.5' - 9.5'	FILL	STRUCTURAL EARTH WALL
WALL 22	A-LINE	562+70.88	568+94.88	9.0'	RT	2.5' - 9.0'	CUT	SOLDIER PILE WALL
WALL 23	A-LINE	572+79.00	575+65.50	11.0'	LT	1.5' - 6.0'	FILL	STRUCTURAL EARTH WALL
WALL 24	A-LINE	577+40.00	578+55.50	11.0'	LT	2.0' - 7.0'	FILL	STRUCTURAL EARTH WALL
WALL 25	A-LINE	579+49.50	599+40.00	11.0'	LT	2.0' - 7.5'	FILL	STRUCTURAL EARTH WALL

\* FOR FILL WALLS, OFFSET DISTANCE FOR WALLS IS AT THE OUTSIDE OF WALL FOR THE CAP BLOCK PER FOR CUT WALLS, OFFSET DISTANCE IS AT BOTTOM OF WALL.



STAIR WALL SCHEDULE

STAIR WALL #	ALIGNMENT	BEGIN STA	END STA	OFFSET	SIDE	EXPOSED WALL HEIGHT RANGE	FILL/CUT	NOTE
NOT USED								
NOT USED								
WALL 2	A-LINE	485+69.75	485+89.25	16.0'	LT	0.0' - 5.5'	FILL	SEE MD 4 DETAIL 2 FOR STAIR PARALLEL TO TRAIL DETAIL
WALL 3	A-LINE	495+36.00	495+52.50	16.0'	LT	0.0' - 6.5'	FILL	SEE MD 4 DETAIL 2 FOR STAIR PARALLEL TO TRAIL DETAIL
WALL 4	A-LINE	496+46.87	496+64.87	16.0'	LT	0.0' - 7.0'	FILL	SEE MD 4 DETAIL 2 FOR STAIR PARALLEL TO TRAIL DETAIL
WALL 5	A-LINE	497+37.50	497+52.50	16.0'	LT	1.0' - 10.0'	FILL	SEE MD 4 DETAIL 2 FOR STAIR PARALLEL TO TRAIL DETAIL
WALL 6	A-LINE	498+61.41	498+80.91	16.0'	LT	0.0' - 7.0'	FILL	SEE MD 4 DETAIL 2 FOR STAIR PARALLEL TO TRAIL DETAIL
WALL 7	A-LINE	499+47.54	499+65.54	16.0'	LT	0.0' - 7.0'	FILL	SEE MD 4 DETAIL 2 FOR STAIR PARALLEL TO TRAIL DETAIL
WALL 8	A-LINE	499+82.17	499+98.67	16.0'	LT	0.0' - 7.0'	FILL	SEE MD 4 DETAIL 2 FOR STAIR PARALLEL TO TRAIL DETAIL
WALL 9 RT	P2-LINE	0+10.13	0+28.13	2.5'	RT	0.0' - 4.0'	FILL	SEE MD 4 DETAIL 1 FOR STAIR PERPENDICULAR TO TRAIL DETAIL
WALL 9 LT	P2-LINE	0+10.13	0+28.13	2.5'	LT	0.0' - 4.0'	FILL	SEE MD 4 DETAIL 1 FOR STAIR PERPENDICULAR TO TRAIL DETAIL
WALL 10	A-LINE	538+36.82	538+56.32	16.0'	LT	0.0' - 8.0'	FILL	SEE MD 4 DETAIL 1 FOR STAIR PARALLEL TO TRAIL DETAIL
WALL 11 RT	P3-LINE	0+11.08	0+28.08	2.5'	RT	0.0' - 1.5'	FILL	SEE MD 4 DETAIL 1 FOR STAIR PERPENDICULAR TO TRAIL DETAIL
WALL 12	A-LINE	559+53.91	559+70.41	16.0'	LT	0.0' - 9.0'	FILL	SEE MD 4 DETAIL 2 FOR STAIR PARALLEL TO TRAIL DETAIL
WALL 13	A-LINE	560+36.55	560+59.15	16.0'	LT	0.0' - 6.0'	FILL	SEE MD 4 DETAIL 2 FOR STAIR PARALLEL TO TRAIL DETAIL
NOT USED								
NOT USED								
WALL 16	A-LINE	583+27.94	583+46.54	16.0'	LT	0.0' - 6.5'	FILL	SEE MD 4 DETAIL 2 FOR STAIR PARALLEL TO TRAIL DETAIL
NOT USED								
NOT USED								
WALL 18 RT	P5-LINE	0+14.55	0+26.55	2.5'	RT	0.0' - 2.0'	FILL	SEE MD 4 DETAIL 1 FOR STAIR PERPENDICULAR TO TRAIL DETAIL
WALL 18 LT	P5-LINE	0+14.51	0+26.51	2.5'	LT	0.0' - 2.0'	FILL	SEE MD 4 DETAIL 1 FOR STAIR PERPENDICULAR TO TRAIL DETAIL
WALL 19	A-LINE	585+60.5	585+89.50	16.0'	LT	0.5' - 4.0'	FILL	SEE MD 4 DETAIL 2 FOR STAIR PARALLEL TO TRAIL DETAIL

LAYOUT: W02 PATH: U:\Belt\Projects\Client\1521-King Cnty\554-1521-075-ELST\995vec\CADD\Phase 15\Task 03\DWG\ PLOTTED BY: purgobut DATE: Friday, September 13, 2013 11:03:53 AM



**Parametrix**  
ENGINEERING, PLANNING, ENVIRONMENTAL SCIENCES  
411 108TH AVENUE N.E., SUITE 1000  
BELLEVUE, WASHINGTON 98004  
T. 425.458.6200 F. 425.458.6363  
www.parametrix.com

PROJECT NAME  
**EAST LAKE SAMMAMISH  
MASTER PLAN TRAIL  
NORTH SAMMAMISH SEGMENT**  
SAMMAMISH, WA

**STRUCTURAL EARTH WALL  
SCHEDULES**

SHEET NO.  
101 OF 127  
**WD2**

CITY OF SAMMAMISH APPROVAL  
*Ronald Pulpot*  
City Engineer  
Date: 9-16-13  
*Mona Davis*  
Community Development  
Date: 9-16-13

DPER ACTIVITY NUMBER  
GRDE12-0017/SHOR12-0003  
FEDERAL AID # STPE-2017 (126)

REVISIONS	DATE	BY	DESIGNED
			J. JUN
			B. PURGANAN
			Y. HO
			J. DVORAK

ONE INCH AT FULL SCALE.  
IF NOT, SCALE ACCORDINGLY  
FILE NAME  
BL1521075P15T03WD-01  
JOB No.  
554-1521-075-P15T04B  
DATE  
SEPTEMBER 2013