

- SURVEY NOTES:**
- HORIZONTAL DATUM: NAD83 (CORS).
 - RTK CORRECTIONS OBTAINED FROM NGS CORS ID POINT "SEAT" ON OCTOBER 3, 2007.
 - VERTICAL DATUM: NAVD88
 - WSDOT SITE BENCHMARKS HELD FOR THIS SURVEY ARE NOS. 2355, 6762, 6294, AND 617.
 - METHODOLOGY: FIELD MEASUREMENTS FOR THIS SURVEY WERE PERFORMED USING TRIMBLE 5800 RTK WITH CELL PHONE AND LIECA TCRA 1103 FULL ROBOTIC 3 SECOND TOTAL STATION IN CONFORMANCE WITH ACCEPTED SURVEY STANDARDS AS SPECIFIED BY WAC 332-130 FOR LINEAR AND ANGULAR CLOSURE.
 - THE RIGHT-OF-WAY DIMENSIONS SHOWN WERE PROVIDED BY KING COUNTY SURVEY AND DO NOT REPRESENT A BOUNDARY SURVEY PERFORMED BY PARAMETRIX.

CITY OF SAMMAMISH APPROVAL

Samuel Kipat
City Engineer
Date: 9-16-13

Mona Davis
Community Development
Date: 9-16-13

DPER ACTIVITY NUMBER
GRDE12-0017/SHOR12-0003
FEDERAL AID # STPE-2017 (126)



Parametrix
ENGINEERING, PLANNING, ENVIRONMENTAL SCIENCES

411 108TH AVENUE N.E., SUITE 1800
BELLEVUE, WASHINGTON 98004
TEL: 425-450-6200 FAX: 425-450-6393
www.parametrix.com

PROJECT NAME
**EAST LAKE SAMMAMISH
MASTER PLAN TRAIL
NORTH SAMMAMISH SEGMENT**
SAMMAMISH, WA

SURVEY CONTROL PLAN

SHEET NO.
5 OF 127

G5

LAYOUT: G5
 PATH: U:\Rail\Projects\Clients\1521-King Cnty\554-1521-075-ELST\995-ca\CADD\Phase 15\Task 03\Draw\...
 PLOTTED BY: purgubut DATE: Tuesday, September 10, 2013 12:38:22 PM

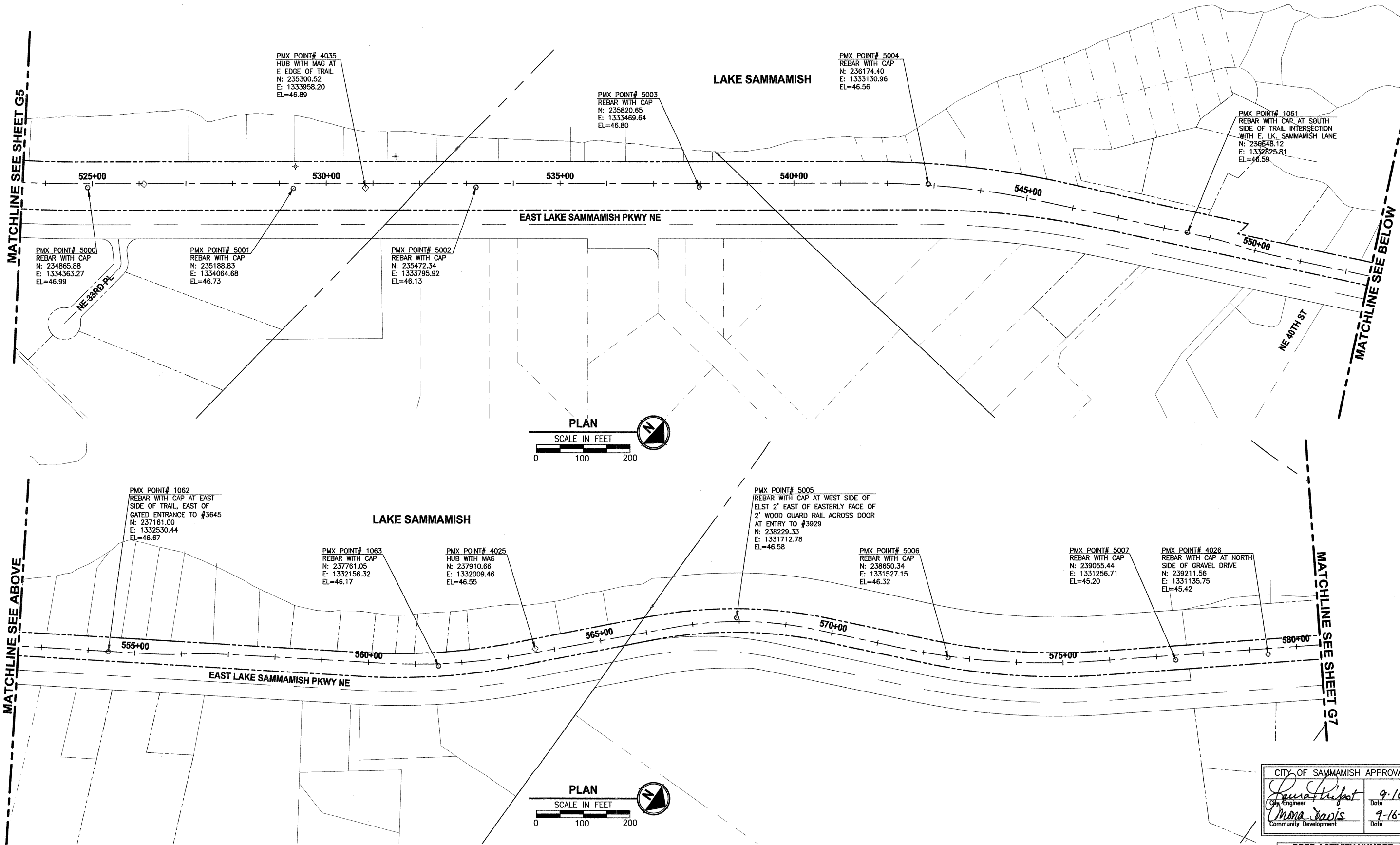
REVISIONS	DATE	BY	DESIGNED
			S. McCASKEY
			S. SIREs
			S. McCASKEY
			J. DVORAK

ONE INCH AT FULL SCALE.
IF NOT, SCALE ACCORDINGLY

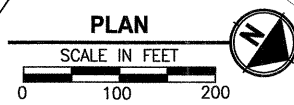
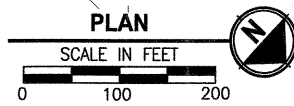
FILE NAME
EL1521075P15T03G-05

JOB No.
554-1521-075-P15T04B

DATE
SEPTEMBER 2013



LAYOUT: 06 PATH: U:\Bak\Projects\Clients\1521-King_Cnty\554-1521-075-ELST\985\cadd\Phase 15\Task_03\Draw\ PLOTTED BY: purgubut DATE: Tuesday, September 10, 2013 12:40:27 PM



CITY OF SAMMAMISH APPROVAL

Paula Lipot
City Engineer
Date: 9-16-13

Mona Davis
Community Development
Date: 9-16-13

DPER ACTIVITY NUMBER
GRDE12-0017/SHOR12-0003
FEDERAL AID # STPE-2017 (126)

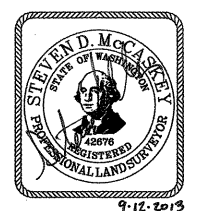
REVISIONS	DATE	BY	DESIGNED
			S. McCASKEY
			S. SIRE
			S. McCASKEY
			J. DVORAK

ONE INCH AT FULL SCALE.
IF NOT, SCALE ACCORDINGLY

FILE NAME
BL1521075P15T03G-05

JOB No.
554-1521-075-P15T04B

DATE
SEPTEMBER 2013



Parametrix
ENGINEERING · PLANNING · ENVIRONMENTAL SCIENCES

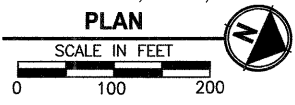
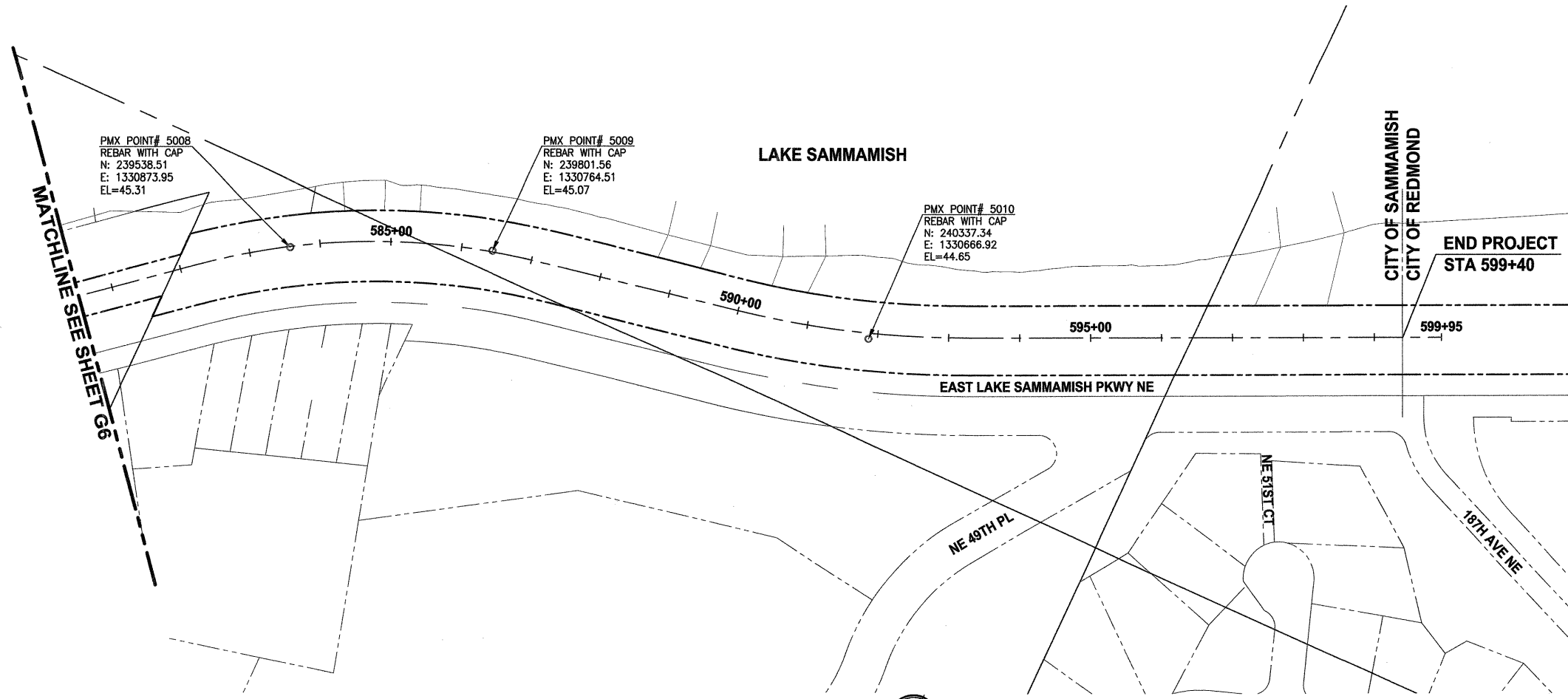
411 108TH AVENUE N.E., SUITE 1800
BELLEVUE, WASHINGTON 98004
T. 425.458.6200 F. 425.458.6363
www.parametrix.com

PROJECT NAME
**EAST LAKE SAMMAMISH
MASTER PLAN TRAIL
NORTH SAMMAMISH SEGMENT**
SAMMAMISH, WA

SURVEY CONTROL PLAN

SHEET NO.
6 OF 127

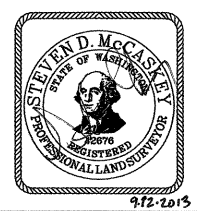
G6



LAYOUT: G7
 PATH: U:\Bak\Projects\Clients\1521-King Cnty\554-1521-075-ELST\999\cadd\Phase 1\Task 03\Draw\ PLOTTED BY: purgobut DATE: Tuesday, September 10, 2013 12:40:41 PM

CITY OF SAMMAMISH APPROVAL	
<i>[Signature]</i> City Engineer	9-16-13 Date
<i>[Signature]</i> Community Development	9-16-13 Date

DPER ACTIVITY NUMBER
 GRDE12-0017/SHOR12-0003
 FEDERAL AID # STPE-2017 (126)



Parametrix
 ENGINEERING . PLANNING . ENVIRONMENTAL SCIENCES
 411 108TH AVENUE N.E., SUITE 1800
 BELLEVUE, WASHINGTON 98004
 T. 425.455.6200 F. 425.455.6363
 www.parametrix.com

PROJECT NAME
**EAST LAKE SAMMAMISH
 MASTER PLAN TRAIL
 NORTH SAMMAMISH SEGMENT**
 SAMMAMISH, WA

SURVEY CONTROL PLAN

SHEET NO.
 7 OF 127
G7

REVISIONS	DATE	BY	DESIGNED
			S. McCASKEY
			DRAWN S. SIREs
			CHECKED S. McCASKEY
			APPROVED J. DVORAK

ONE INCH AT FULL SCALE.
 IF NOT, SCALE ACCORDINGLY
 FILE NAME
 BL1521075P15T03G-05
 JOB No.
 554-1521-075-P15T04B
 DATE
 SEPTEMBER 2013

9/2/2013