



ArcGIS Solutions

Real-world maps and apps to jumpstart your work

Shane Clarke
Esri

sclarke@esri.com

ArcGIS Industry Specific Maps and Apps

ArcGIS Solutions deliver Ready-to-Use Maps and Apps to jumpstart your work

FIND YOURS ↓

**332 Maps and Apps
(October, 2016)**

**Real solutions,
in production,
built in collaboration
with real customers
(including large cities),
to meet real needs**

Leverage hundreds of ready-to-use maps, apps, and platform configurations to meet your needs, delivering innovation and best practices for your organization.

Built by developers, fully supported by Esri, source code on GitHub

Local Government State Government Emergency Management Water Electric Gas Defense Telecommunications Parks & Gardens

What have you done with ArcGIS Solutions?

1. Deployed one or more of the ArcGIS Solutions
2. Looked at the ArcGIS Solutions and concluded they are not suitable
 - a. Because of dependency on Local Government Information Model
 - b. Because “our needs are different and unique”
3. Have no idea what ArcGIS Solutions consists of

Why are ArcGIS Solutions important to you?

- Limited resources
 - Unlimited demands
 - Increasing complexity
-
- Increase the impact of Geography and GIS

ArcGIS Solutions = Your virtual development team, paid for by Esri!

ArcGIS Solutions are part of the ArcGIS Platform



Every city has **aspirations** for the what they want to become.



Those aspirations get translated into actionable, real-world **initiatives**



Los Angeles GeoHub

LA Metro Bus Routes

Applications



CleanStat

How clean is your street? See how the streets of Los Angeles score in the first-of-its-kind Clean Streets Index.

Open

Details



Street Wize

View construction and permit activities under way and coming soon to the streets of Los Angeles.

Open

Details



Road to 2400

See road work completed in the city over time.

Open

Details



Let's Walk!

Walking is an integral part of every person's day. How can we make it easy and safe to walk in Los Angeles?

Open

Details

Demonstration

ArcGIS for Local Government

Public Works

Campus Editing
Campus Place Finder
Citizen Problem Reporter
SnowCOR
My Government Services
Railroad Crossing Inventory
Street Tree Inventory
Street Furniture Inventory
Guardrail Inventory
Pavement Marking Inventory

Road Network Management
Road Closures
Plans and Drawings
Maintenance Agreements
Sidewalk Inventory
Bridge Inventory
Sign Inventory
Signal Inventory
Streetlight Inventory
Public Parking
Capital Project Planning



Land Records

Tax Parcel Editing
Deed Drafter
Public Land Survey Editing
Tax Parcel Map Book

Tax Parcel Viewer
Value Dashboard
Tax Reverted Property
Floodplain Inquiry
Data Reviewer for Parcels



Elections

Election Results
Election Polling Places



Public Safety

Flood Planning
Special Event Planning
Fire Station Wall Map
Fire Run Book
Pre-Incident Planning
AED Inventory
Home Safety Inspection
Target Hazard Analysis
Fire Hydrant Inspection
Cell Phone Analysis
Incident Mapping

Field Interview Card
Public Information Map
Impact Summary Map
Damage Assessment
My Hazard Information
EM Maps
CAMEO Tools
Evacuation Zones
Emergency Assistance
Health and Safety Reports



Water Utilities

Water Distribution Map
Sewer Network Map
Stormwater Network Map
Water Asset Locator
Model Organization
Network Editing
DR for Water Utilities
Map Change Request
Proposed Water Design
Water Leak Investigator
Utility Isolation Trace
Main Break Notification
Drinking Water Advisory
Outage Viewer
Social Media Sentiment
Capital Planning
Capital Projects
Pavement Coordination
Water Service Request
CSO Outfalls
Sewer Service Lookup
Backflow Inspection

Hydrant Inspection
Valve Exercise
Inlet Inspection
Field Notes
Water Utility Mobile Map
Manhole Inspection
MS4 Inventory
Illicit Discharge
Site Violations
Water Violations
Water Restrictions
Green Infrastructure
Water Conservation
SCADA Processor
Customer Complaints
High/Low Consumption
Water Inventory Reports
CCTV Processor
Nighttime Flow Analysis
Sub DMA
Leak Logger
Pressure Zone Analysis



Planning

Site Selector
Live, Work, Locate
Park Locator
Address Data Management
Address Crowdsourcing
Data Reviewer for Addresses

Land Use Public Comment
Land Use Public Notification
Code Violation
Events Calendar



Local Government

Information Model
Basemaps
Data Reviewer for Basemaps
Executive Dashboard
Briefing Book

Crowdsourcing
Maps and Apps Gallery
Community Parcels
Community Addresses
Model Organization



Categorization of ArcGIS Solutions

Industries

Local Government
State Government
Parks and Gardens
Electric
Gas
Water
Telecommunications
Emergency Management
Defense

Products/Applications

ArcGIS for Desktop
ArcGIS Runtime
Collector for ArcGIS
ArcGIS Maps for Office
GeoEvent Extension
Operations Dashboard for ArcGIS
Web AppBuilder for ArcGIS
Template Web Applications
Model Organization

Implementation Patterns

Data Management
Field Mobility
GeoEnablement
Operational Awareness
Planning and Analysis
Community Engagement

Categorization of ArcGIS Solutions – Workflows & Multi-Purpose Apps

Workflows

Photo Survey + Citizen Reporter + Problem Management + Operations Dashboard

Collector + Operations Dashboard + Story Maps

Citizen Problem Reporter + Citizen Problem Management + Citizen Problem Dashboard

Multi-Purpose Apps

Collector for ArcGIS

Operations Dashboard for ArcGIS

Photo Survey

Adopta (Added September, 2016)

Citizen Problem Reporter + Citizen Problem Management + Citizen Problem Dashboard

Park/Events/Shelter Locator

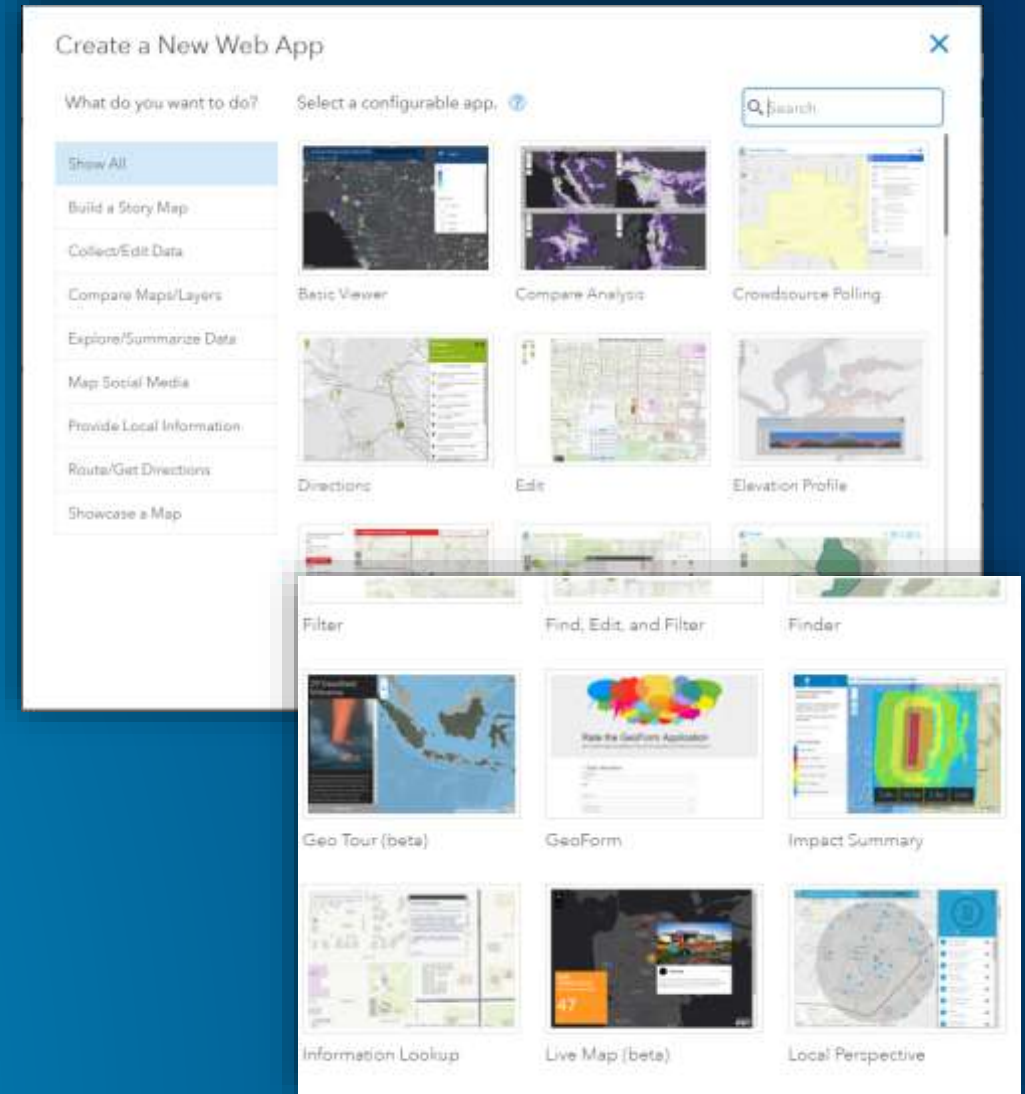
Template Web Apps (e.g. Directions, Local Perspective, GeoForm)

Web AppBuilder widgets (e.g. Near Me)

Story Maps

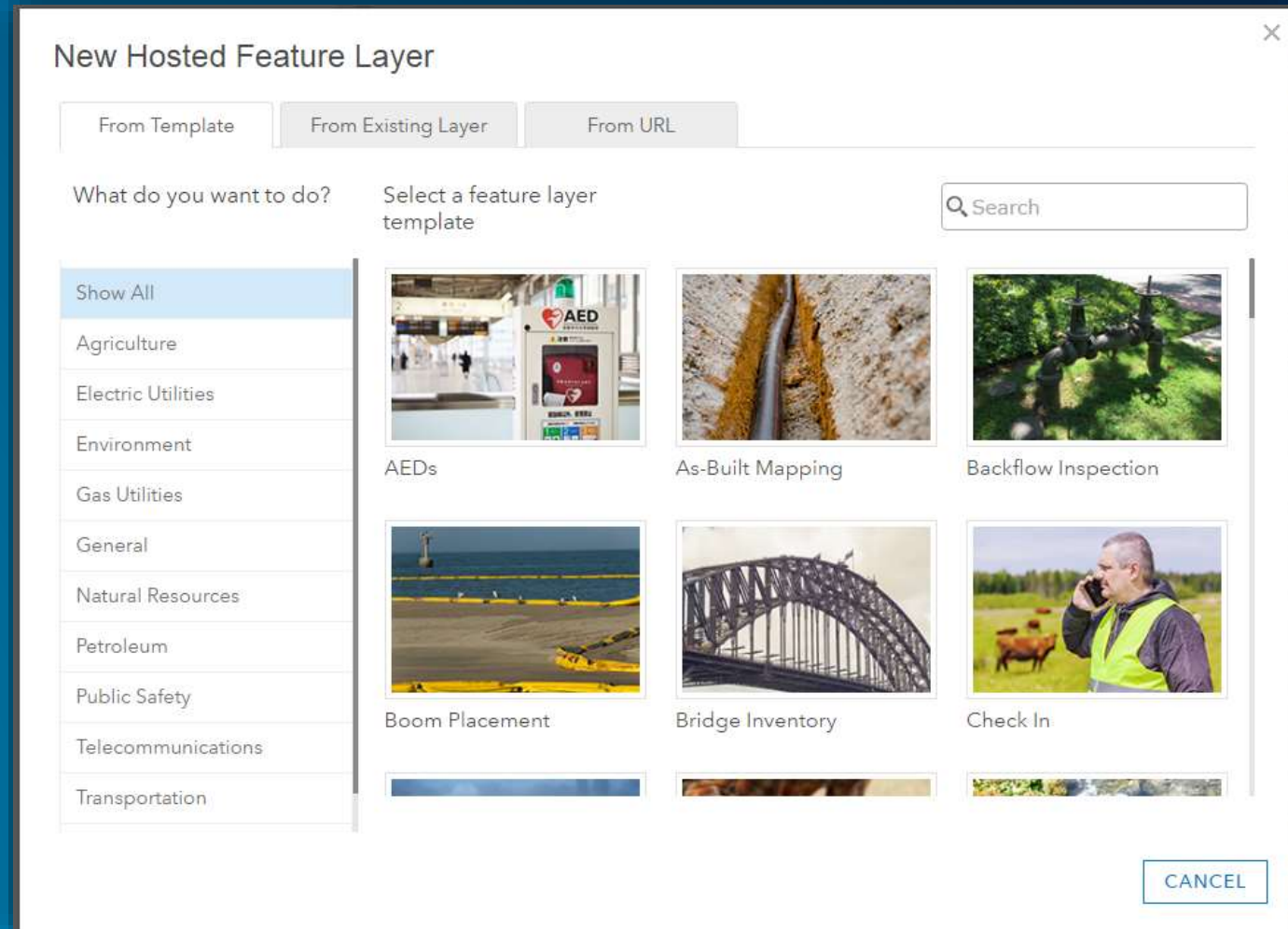
Template Web Apps

- ArcGIS Online includes 29 template web apps
- Used by some ArcGIS Solution apps
- Do not require Local Government Information Model schema
- Most templates use responsive design
 - Will work on any screen size/device



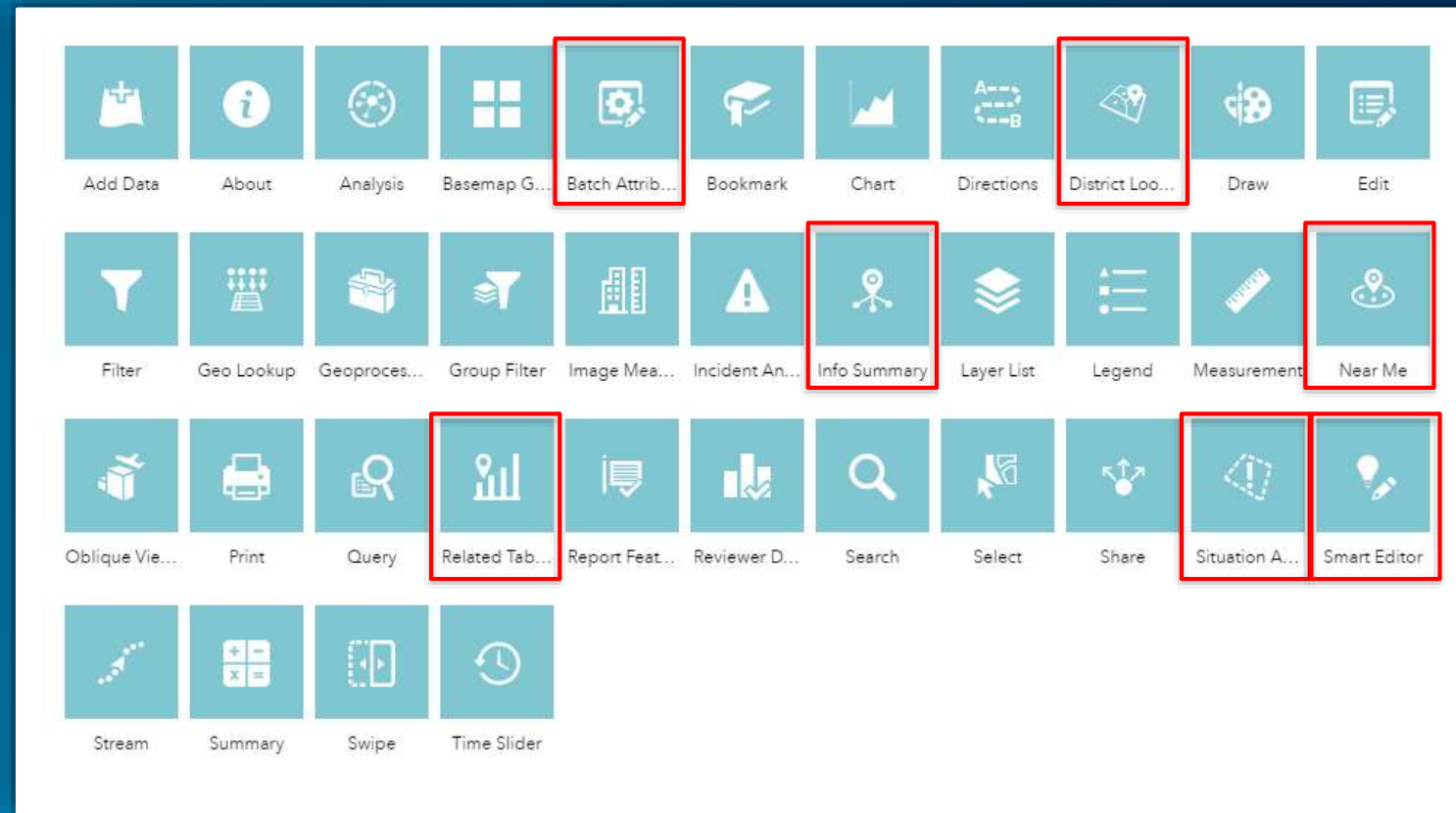
Collector for ArcGIS and Hosted Feature Layer templates

- ArcGIS Online includes 56 Hosted Feature Layer templates
- To create go to My Content > Create > Feature Layer
- Includes complete schema
- Useful for rapid development of layers and web maps for use with Collector for ArcGIS



Web AppBuilder Widgets

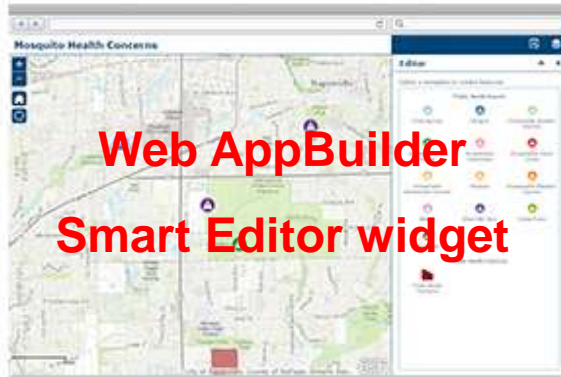
- Many Solutions are based on Web AppBuilder Widgets
- Custom widgets
 - require WAB Developer Edition
- Off-the-shelf widgets
 - available via ArcGIS Online, Portal for ArcGIS



Examples of Solutions using Web AppBuilder Widgets

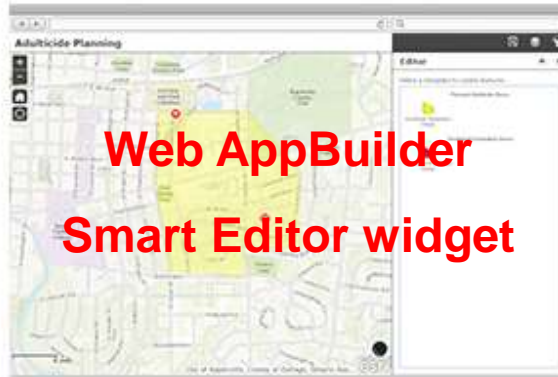
Widget	Custom Widget?	Solutions
Adopta	Yes	Adopt a Catch Basin / Hydrant / Park
District Lookup	No	Election Polling Places, School Locator
Info Summary	No	Transportation 511 (Road Conditions)
Near Me	No	Early Voting, My Government Services, Mosquito Spray Areas, My Health Services, My Hazard Information, AED Locator
Network Trace	Yes	Utility Discharge Trace, Illicit Discharge Trace
ParcelDrafter	Yes	Parcel Drafter
Related Table Charts	No	Election Results
Service Feasibility	Yes	Service Qualification, Point of Sale
Situation Awareness	No	Situational Awareness Viewer, Operations Response, Logistics Planning
Smart Editor	No	Mosquito Adulticide Planning, Mosquito Health Concerns, Events Coordination, Events Site Map

Mosquito Control - Example of Workflow and Multi-Purpose Apps



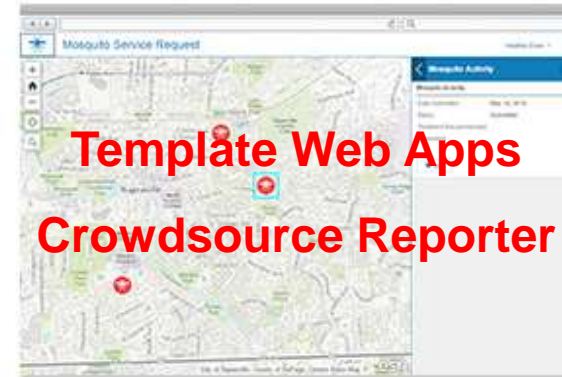
**Web AppBuilder
Smart Editor widget**

Mosquito Health Concerns
Local Government



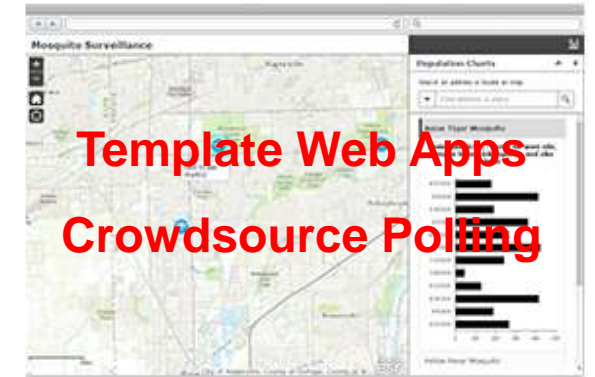
**Web AppBuilder
Smart Editor widget**

Mosquito Adulticide Planning
Local Government



**Template Web Apps
Crowdsource Reporter**

Mosquito Service Request
Local Government



**Template Web Apps
Crowdsource Polling**

Mosquito Population Surveillance
Local Government

A screenshot of a web application titled "Don't Spray Me". It contains a form with fields for "Name", "Address", "Type of Residence", "Home Phone", and "Cell Phone". A "Geoform" widget is used for the address field.

**Template Web Apps
Geoform**

Mosquito Spray Exclusions
Local Government



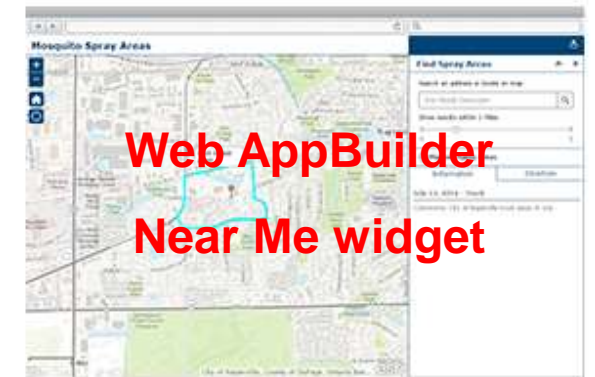
Collector for ArcGIS

Mosquito Field Operations
Local Government



Collector for ArcGIS

Mosquito Larvicide Reporting
Local Government



**Web AppBuilder
Near Me widget**

Mosquito Spray Areas
Local Government

Gallery

Search Solutions Gallery



Show Me

All

Industries

- Local Government
- State Government
- Parks and Gardens
- Electric
- Gas
- Water
- Telecommunications
- Emergency Management
- Defense

Products/Applications

- ArcGIS for Desktop
- ArcGIS Runtime
- Collector for ArcGIS
- Field Maps for iOS

All Industries

ArcGIS Industry Specific Maps and Apps: ArcGIS Solutions deliver Ready-to-Use Maps and Apps to jumpstart your work.



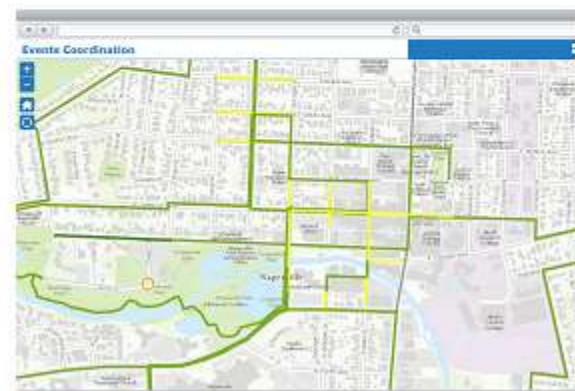
Historical Election Results
State Government



Collection Viewer
Parks and Gardens



Service Feasibility Widget
ArcGIS Solutions



Demonstration

Photo Survey

[Home](#)[Get Started](#)

Overview

Photo Survey is a configuration of ArcGIS and a JavaScript application that can be used by local governments to publish street-level photo collections and conduct focused property surveys that may identify blight, damaged structures, or construction activity.

Photo Survey leverages location-enabled photos produced by many commercially available cameras and simplifies data processing so street-level photo collections can be gathered on a regular basis. Photo collections can then be combined with relevant survey questions in an ArcGIS Online map, and shared with the Photo Survey application. Once complete, the Photo Survey application can be used by the general public and/or local government staff to review street-level photos and complete property surveys.

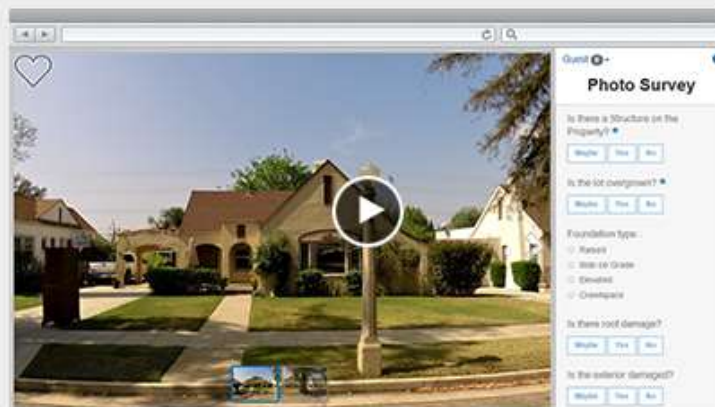
[REQUIREMENTS](#)[WHAT YOU GET](#)[WHAT'S NEW](#)[DOWNLOAD](#)[TRY IT NOW](#)

Photo Survey
Local Government



Wildlife Photo Survey
State Government

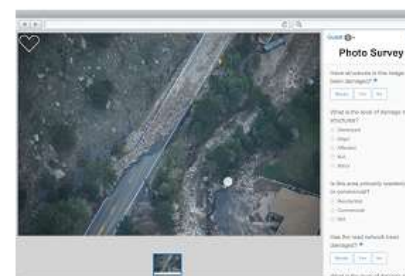


Photo Survey
Emergency Management

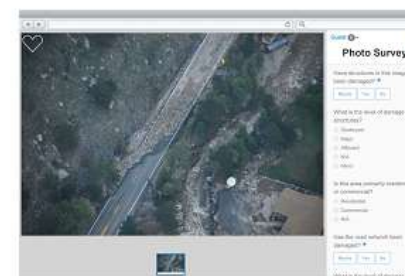
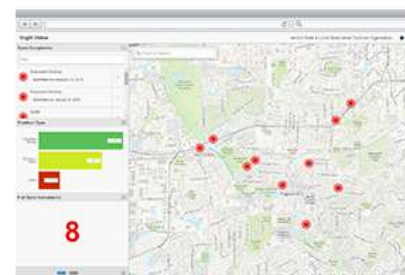
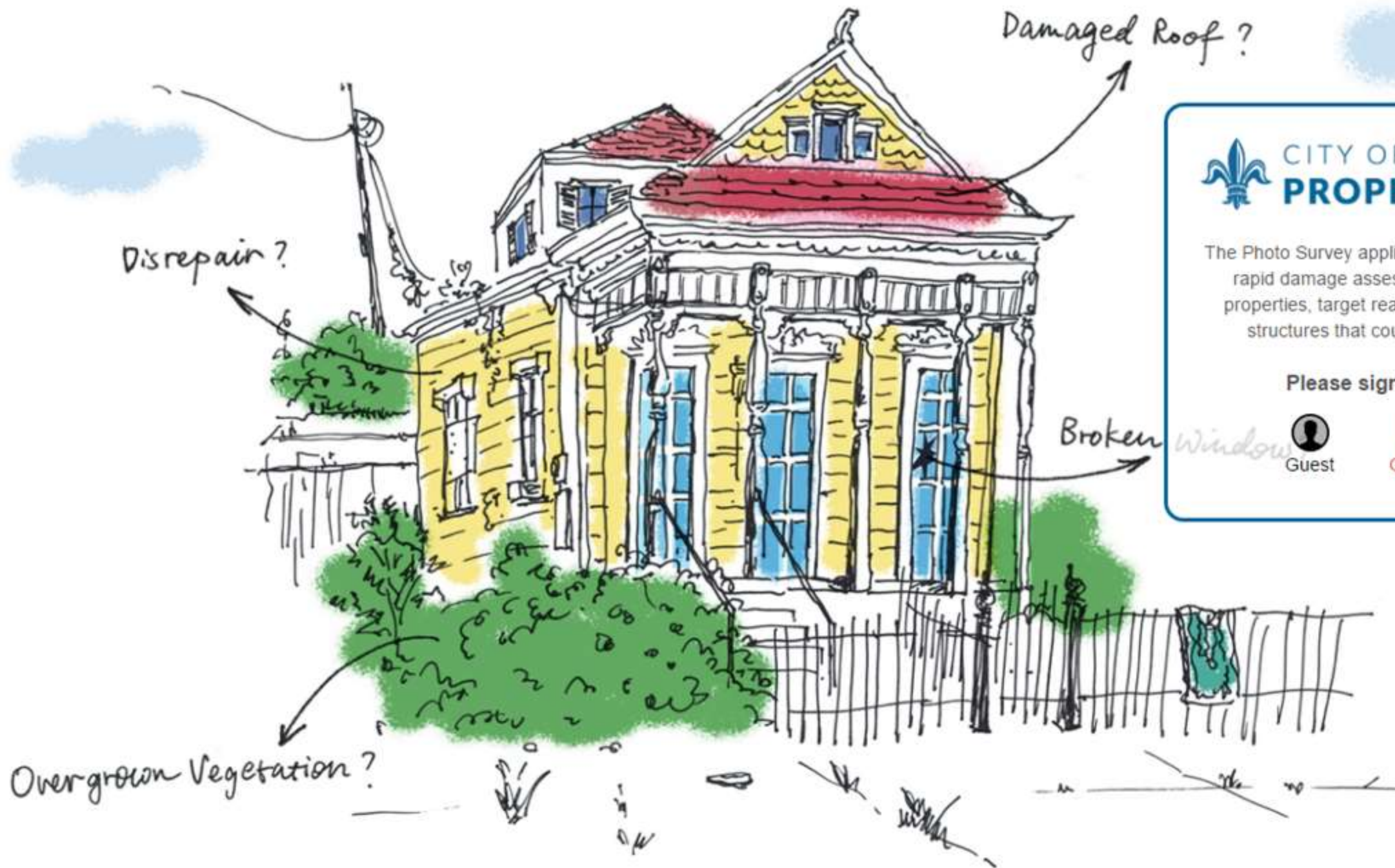


Photo Survey
State Government



Blight Status
Local Government



CITY OF NEW ORLEANS PROPERTY SURVEY

The Photo Survey application can be used to conduct rapid damage assessments, inventory blighted properties, target reappraisal efforts, and identify structures that could pose safety concerns.

Please sign in to get started



Guest



Google+



Twitter

Gallery

blight



Show Me

All

Industries

- ▶ Local Government
- ▶ State Government
- ▶ Parks and Gardens
- ▶ Electric
- ▶ Gas
- ▶ Water
- ▶ Telecommunications
- ▶ Emergency Management
- ▶ Defense

Products/Applications

ArcGIS for Desktop

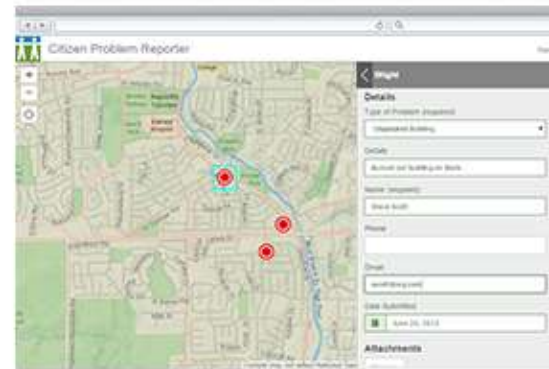
All Industries

ArcGIS Industry Specific Maps and Apps: ArcGIS Solutions deliver Ready-to-Use Maps and Apps to jumpstart your work.



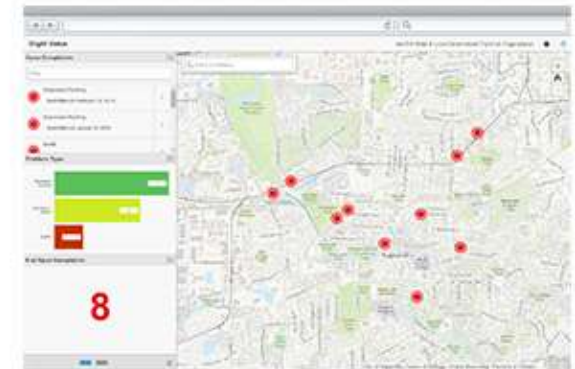
Photo Survey

Local Government



Citizen Problem Reporter

Local Government



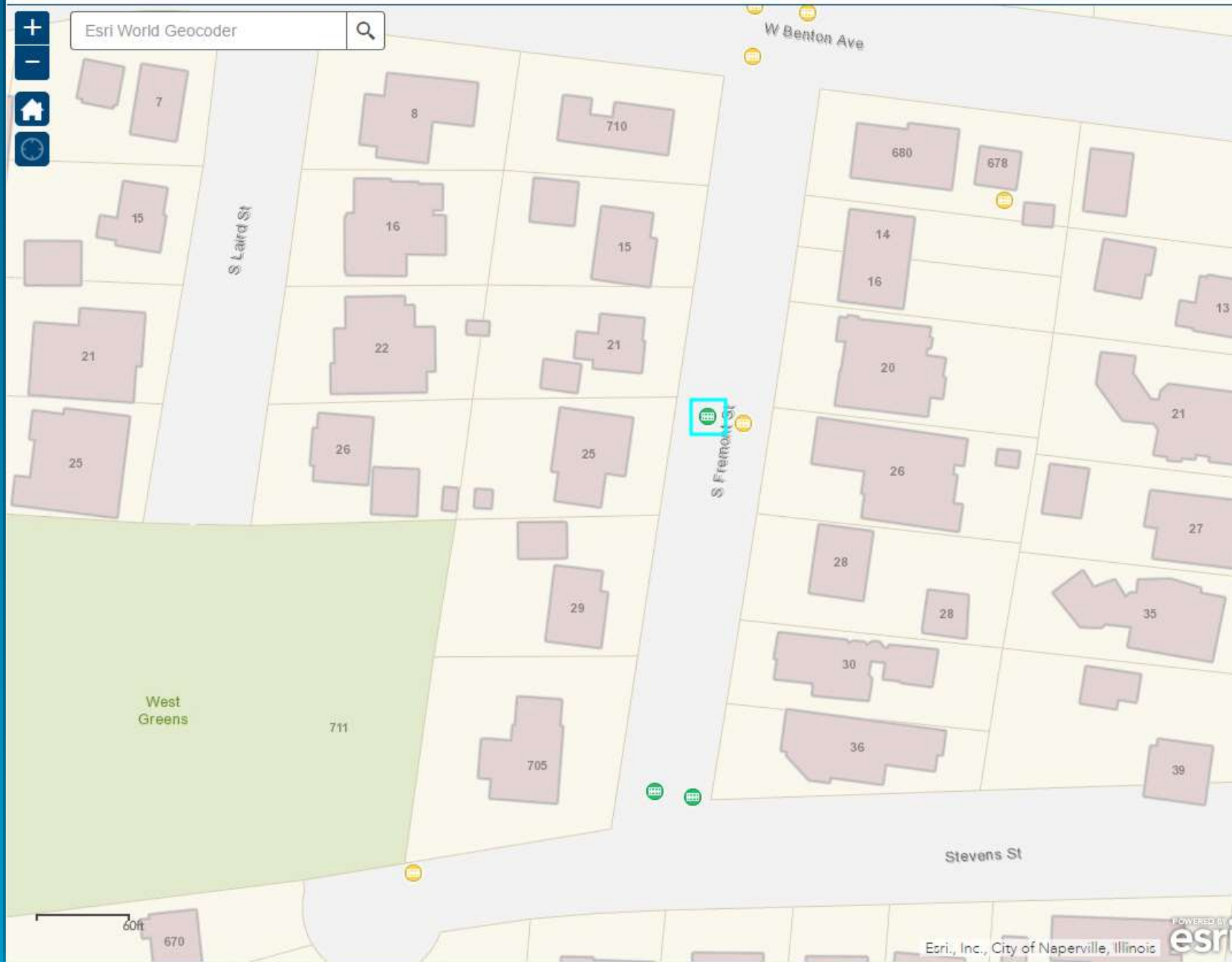
Blight Status

Local Government

Adopt a Catch Basin



Esri World Geocoder



Adopta



Last updated on: October 6, 2016
Nickname: 21 S Fremont

Street Address

21 S Fremont St

50

Name your asset (optional)

Adopt

ArcGIS Apps for the Field

Maximize the efficiency of your field workforce.



Collector for ArcGIS



Navigator for ArcGIS



Operations Dashboard for ArcGIS



Explorer for ArcGIS



Workforce for ArcGIS



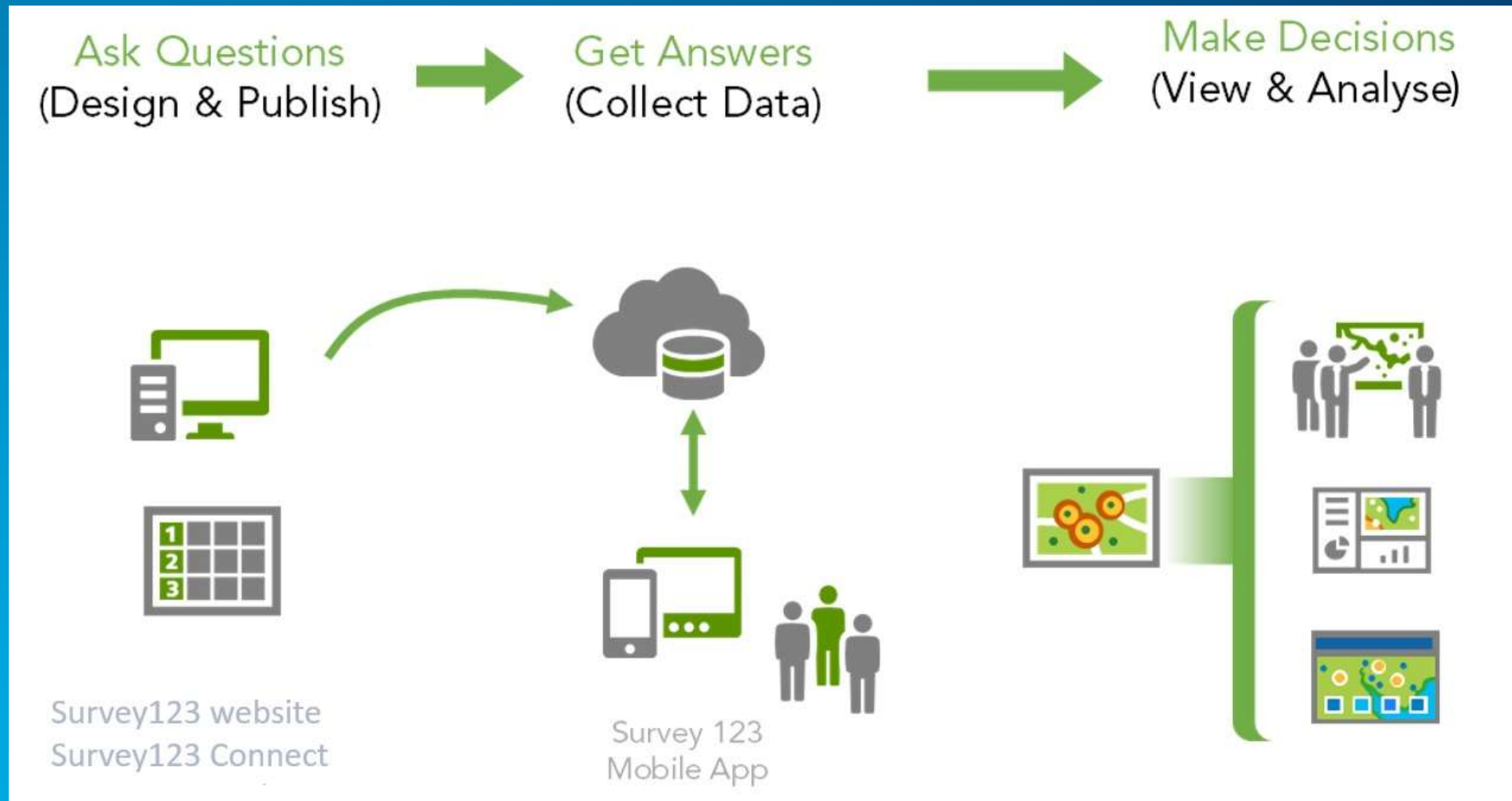
Survey123 for ArcGIS

Survey123 for ArcGIS

Form-centric data collection



Survey123 for ArcGIS



ArcGIS Apps for the Office

Make smarter, faster decisions in the office.



ArcGIS Apps for the Community

Share information and crowdsource ideas.



Esri Story Maps



ArcGIS Open Data



Configurable Apps



Quick Report Template



Crowdsourcing Reporter



Crowdsourcing Manager



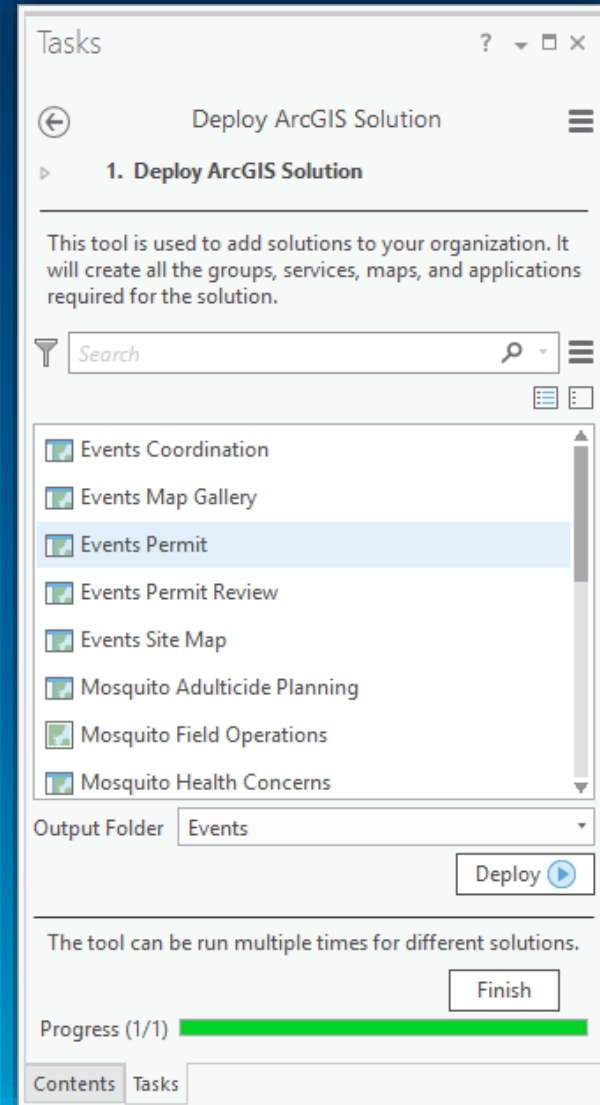
Crowdsourcing Polling



Photo Survey

Solution Deployment Tool

- **ArcGIS Pro tasks and tools**
 - Discover, deploy and configure solutions in an ArcGIS Organization
- **Help users:**
 - Discover solution offerings available
 - Deploy the services, maps, and configurable apps to their organization
 - Configure the solution to meet specific needs in their organization
 - Add/Remove fields
 - Modify field domains and aliases
 - Load their data (if required)
- **Works with ArcGIS Pro 1.4 and 1.3**



The ArcGIS Solutions pattern has changed

LGIM released October, 2011

- **Initially**
 - Solutions required Local Government Information Model (LGIM)
 - Consisted of custom apps
 - Apps needed to be hosted on your own infrastructure (not ArcGIS Online)
- **Today**
 - Many Solutions don't require LGIM (or have minimal LGIM requirement)
 - **Most Solutions consist of**
 - Configurations for COTS apps
(Collector for ArcGIS, Operations Dashboard for ArcGIS, Story Maps, etc)
 - Configurations of template web apps
 - Configurations of Web AppBuilder for ArcGIS (using standard and/or custom widgets)
 - Many apps can also be hosted in portal (ArcGIS Online/Portal for ArcGIS)
 - Include many end-to-end workflows with multiple maps and apps

Considerations

- Understanding the current ArcGIS Solutions provides flexible methods for meeting a variety of needs – without developing custom apps
- ArcGIS Solutions consists of 332* real solutions, developed in collaboration with real customers, to meet real needs
- Many of these needs must also exist at your city/county/organization
- Every city/county/organization has finite developer resources
- ArcGIS Solutions enables your city/county/organization to meet unmet needs – without requiring developer resources
- ArcGIS Solutions are great for rapid app development and proof-of-concept
- Source code for apps available on GitHub (<http://esri.github.io/#Local-Government>)

Next steps

- Which of the ArcGIS Solutions correspond with current app needs in your city/county/organization?
- How can Esri help to deploy these apps?
- Keep up-to-date with new and updated apps, and Web AppBuilder updates in conjunction with ArcGIS Online updates:
<https://blogs.esri.com/esri/arcgis/>



Thank you!

Shane Clarke
Esri
sclarke@esri.com