

Fall City Business District Status of Planning for a Wastewater Treatment Facility

October 5, 2017



King County

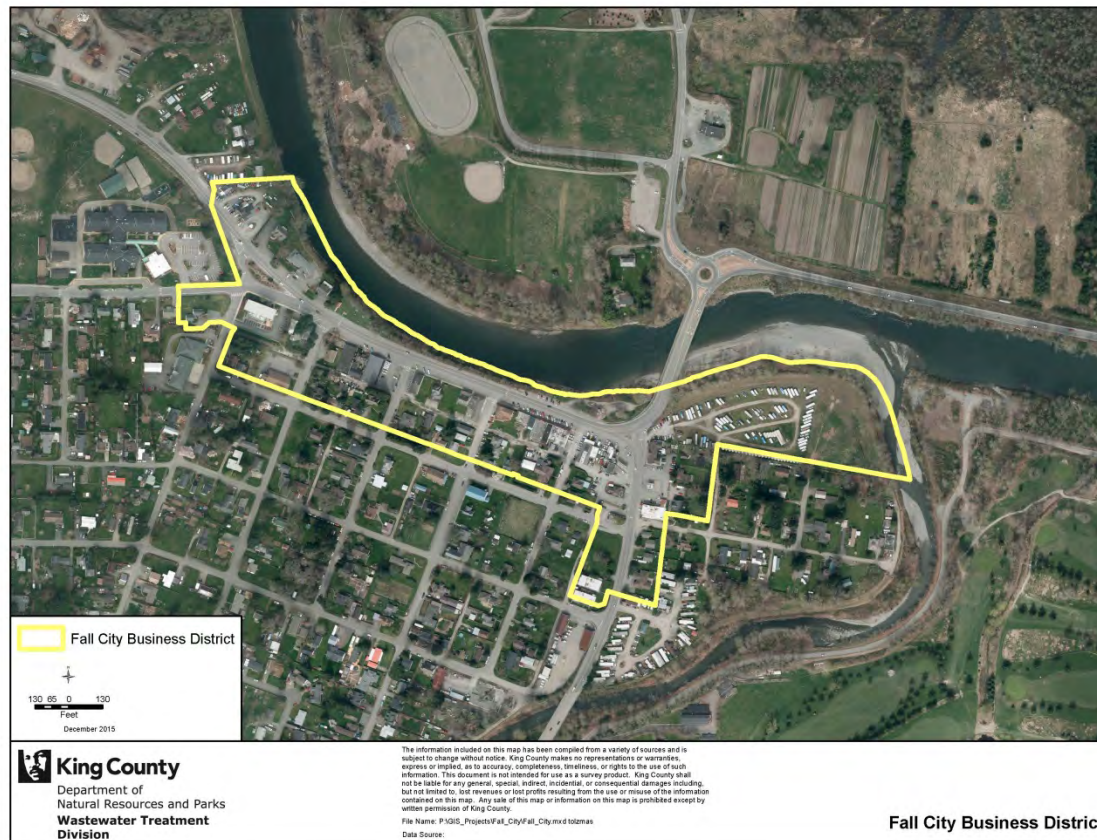
Department of Natural Resources and Parks
Wastewater Treatment Division

Presentation Topics

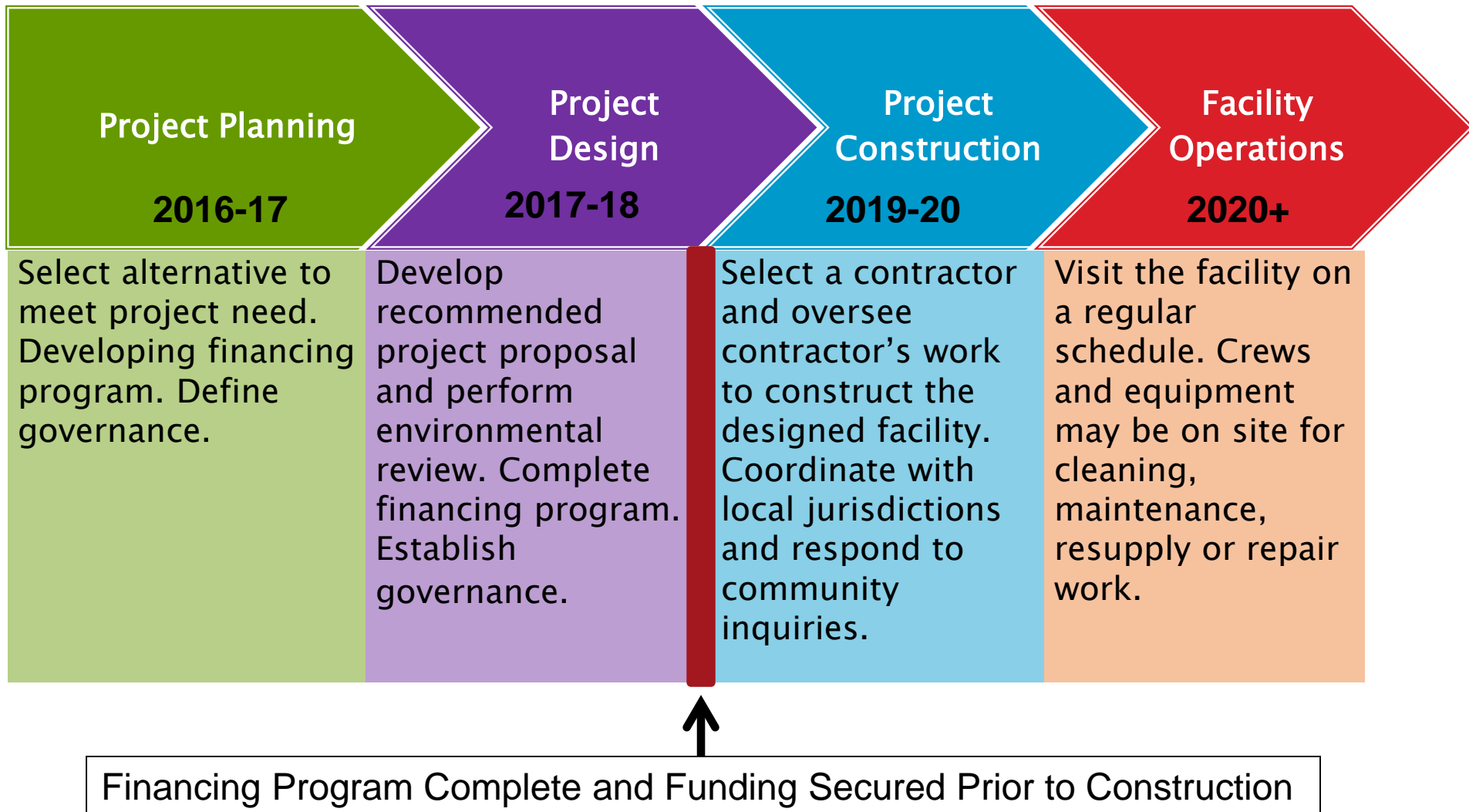
- Background
- Siting of wastewater facilities
- Financing and monthly cost scenarios
- Next steps

Background

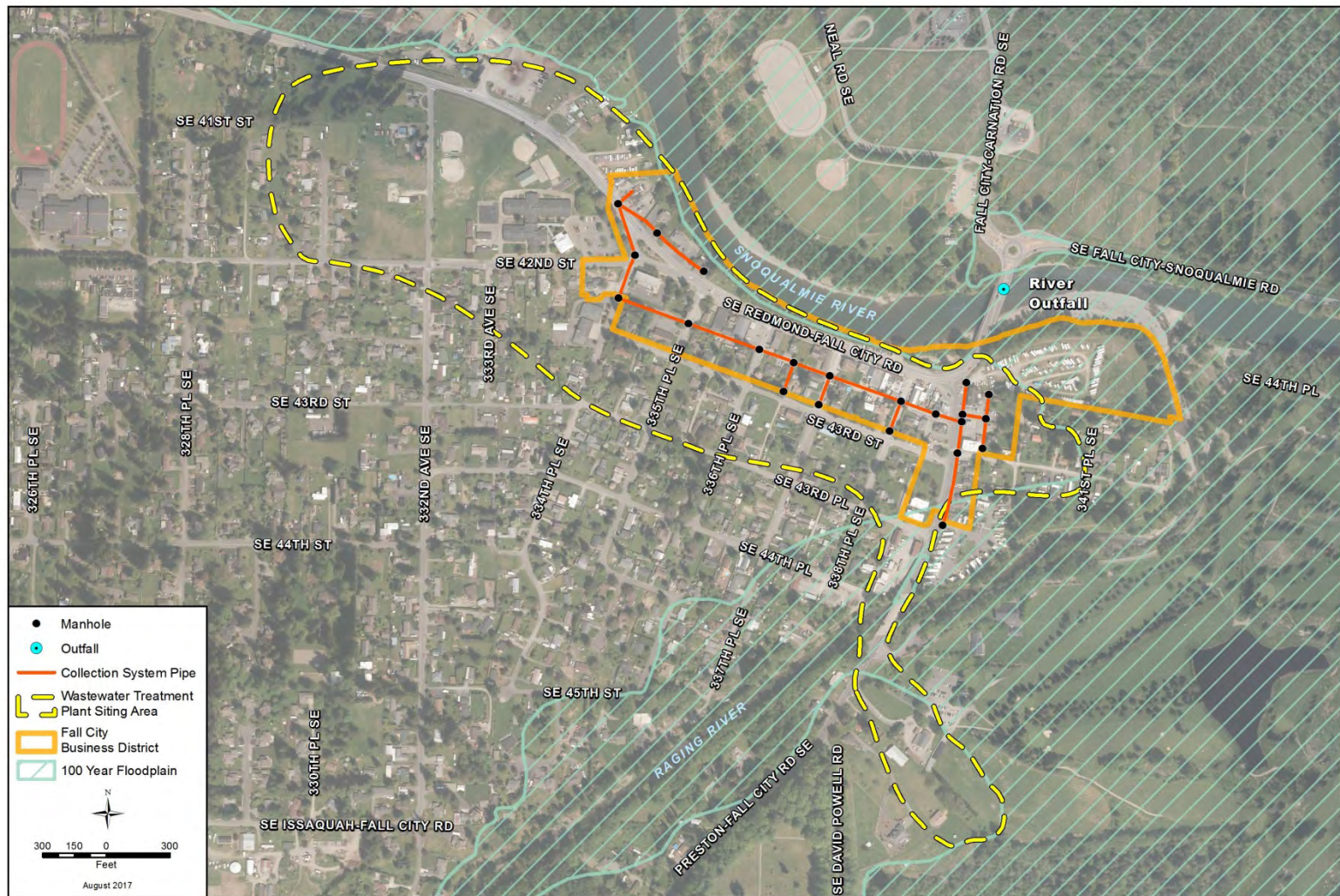
- ▶ Currently served by on site septic systems
- ▶ Centralized wastewater treatment for business district



Process Overview



Proposed Wastewater Alternative



King County

Department of
 Natural Resources and Parks
**Wastewater Treatment
 Division**

The information included on this map has been compiled from a variety of sources and is subject to change without notice. King County makes no representations or warranties, express or implied, as to accuracy, completeness, timeliness, or rights to the use of such information. This document is not intended for use as a survey product. King County shall not be liable for any general, special, indirect, incidental, or consequential damages including, but not limited to, lost revenues or lost profits resulting from the use or misuse of the information contained on this map. Any sale of this map or information on this map is prohibited except by written permission of King County.

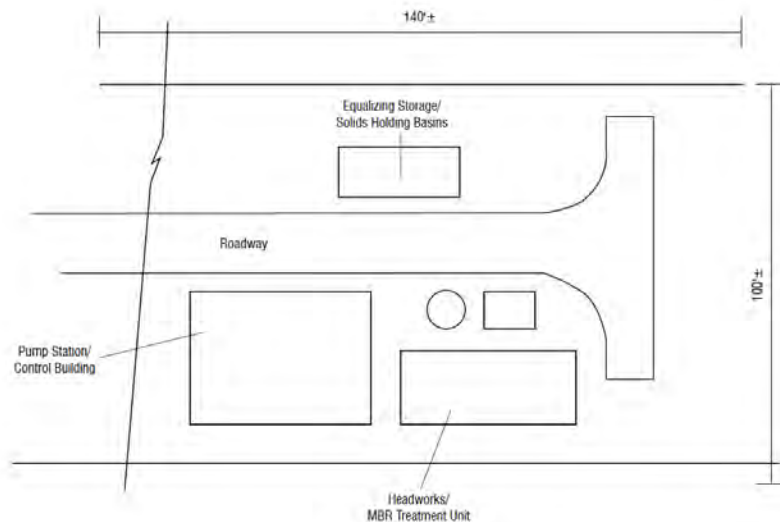
File Name: Q:\WTD\Projects\FallCity\Projects\proposed_alternative_letter.mxd keump
 Data Source: King County

Proposed Sewer Facilities

Fall City Business District

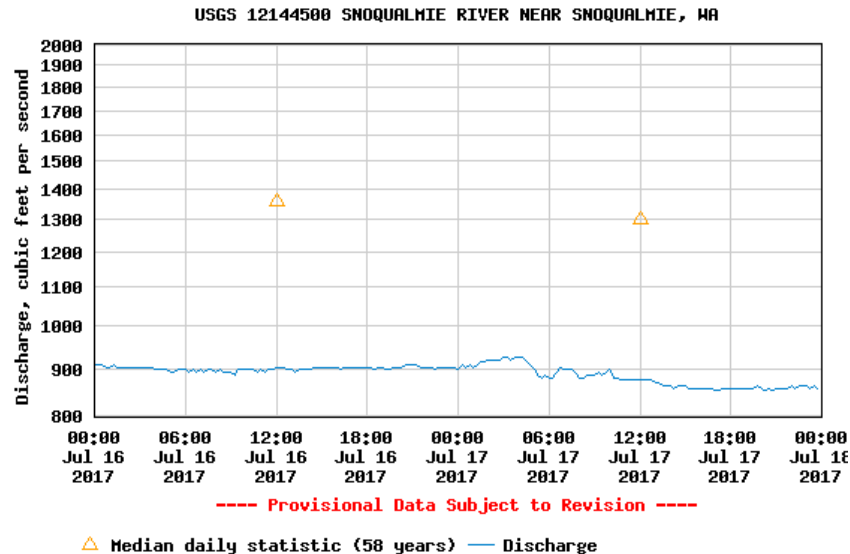
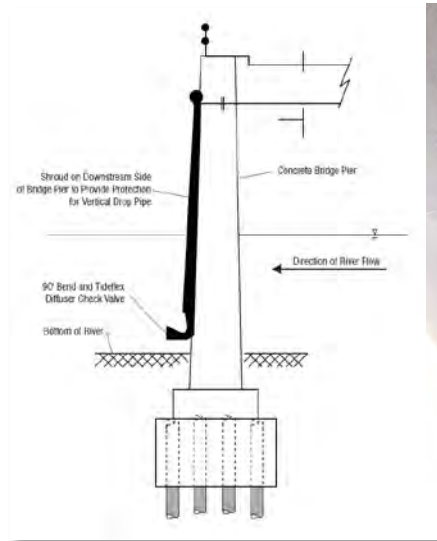
Wastewater Treatment Facility

- Preassembled Membrane Bioreactor



Wastewater Facility Discharge

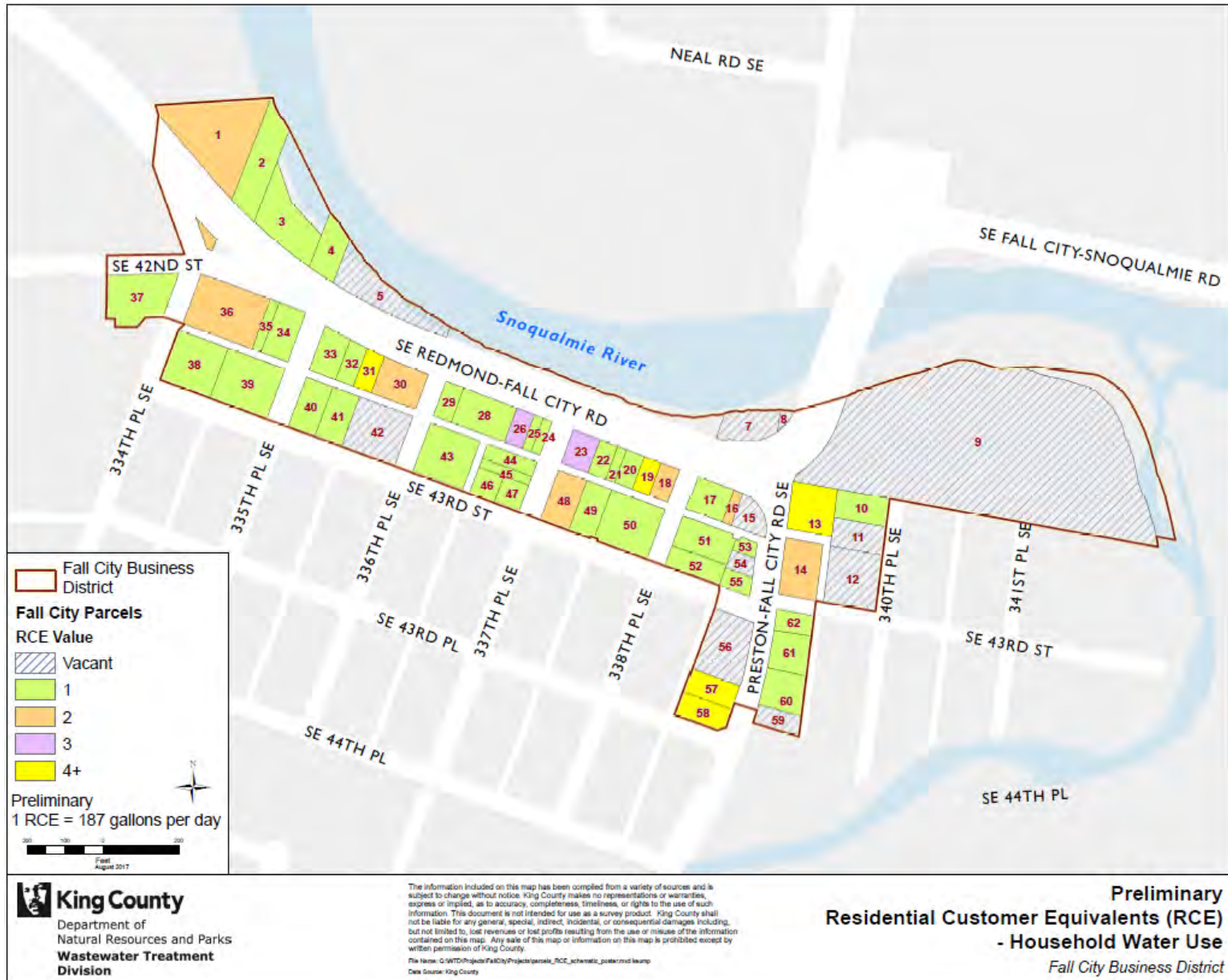
- ▶ Location: River Discharge at State Highway 202 Bridge
- ▶ Estimated Discharge is less than 0.1 cfs



Fall City Wastewater Treatment Facility Financing Overview

- ▶ Estimated facility cost is approx. \$15,000,000 (May increase or decrease in design)
- ▶ Monthly sewer cost scenarios range from \$315 to \$141 per Residential Customer Equivalent (RCE)
- ▶ Need low or zero interest loans and grant funding

Fall City Business District RCEs



Grant and Loan Sources

- ▶ Largest Potential Grant/Loan options:
 - State Water Pollution Control Revolving Fund Loan (SRF)/Centennial Clean Water Fund Loan
 - Direct State Capital Budget Appropriation

- ▶ Other options:
 - Public Works Board Loan
 - Rural Community Assistance Corporation Loan
 - Rural Water Revolving Fund Loan
 - Community Economic Revitalization Board Grant

Qualifying for State Revolving Fund Grants and Loans

- ▶ Based on Median Household Income (MHI)
- ▶ Fall City MHI \$74,744 (King County \$75,302)

Sewer Fee/MHI	<2%	>2% but <3%	>3% but <5%	>5%
Hardship designation	None	Moderate	Elevated	Severe
20-year loan rates	1.5%	1.0%	0.5%	0.0%
Grant eligibility	None (up to \$5M)	50% (up to \$5M)	75% (up to \$5M)	100% (up to \$5M)
Monthly Sewer Cost Range	\$125	\$126–\$186	\$187–\$310	\$311+

Fall City Funding Scenarios

Estimated Facility Costs	Estimated Monthly Sewer Cost per RCE	Hardship Designation	Grant Amount	Loan Amount
\$15M – capital \$148,000/yr. – operating	\$141	Moderate	\$2.5M SRF \$12.8M State Appropriation	\$0
\$15M – capital \$148,000/yr. – operating	\$280	Elevated	\$3.75M SRF \$10.3M State Appropriation	\$1.25M SRF
\$15M – capital \$148,000/yr. – operating	\$315	Severe	\$5M SRF \$5.3M State Appropriation	\$5M SRF

Wastewater Facility Governance

- ▶ Proposed to use existing local governments
 - Contract with existing special district as local sewer provider
 - King County WTD will provide regional treatment

Next Step: Finalize General Sewer Plan

- ▶ Submit final to Washington State Department of Ecology for approval
- ▶ After approval continue to seek grants and loans

Questions and Discussion



Steve Tolzman
Project Manager
King County Wastewater Treatment Division
206.477.5459
steve.tolzman@kingcounty.gov