



King County Wastewater

Strategic Planning for:

- Biosolids
 - Recycled Water
 - Energy
 - Technology
- Assessment and
Innovation

July 12, 2017

Overview of Strategic Plans

WTD Vision: An innovative and resilient clean water enterprise revolutionizing the recovery of valuable resources for sustainable communities.

Mission: We protect public health and enhance the environment by collecting and treating wastewater while recycling valuable resources for the Puget Sound region.

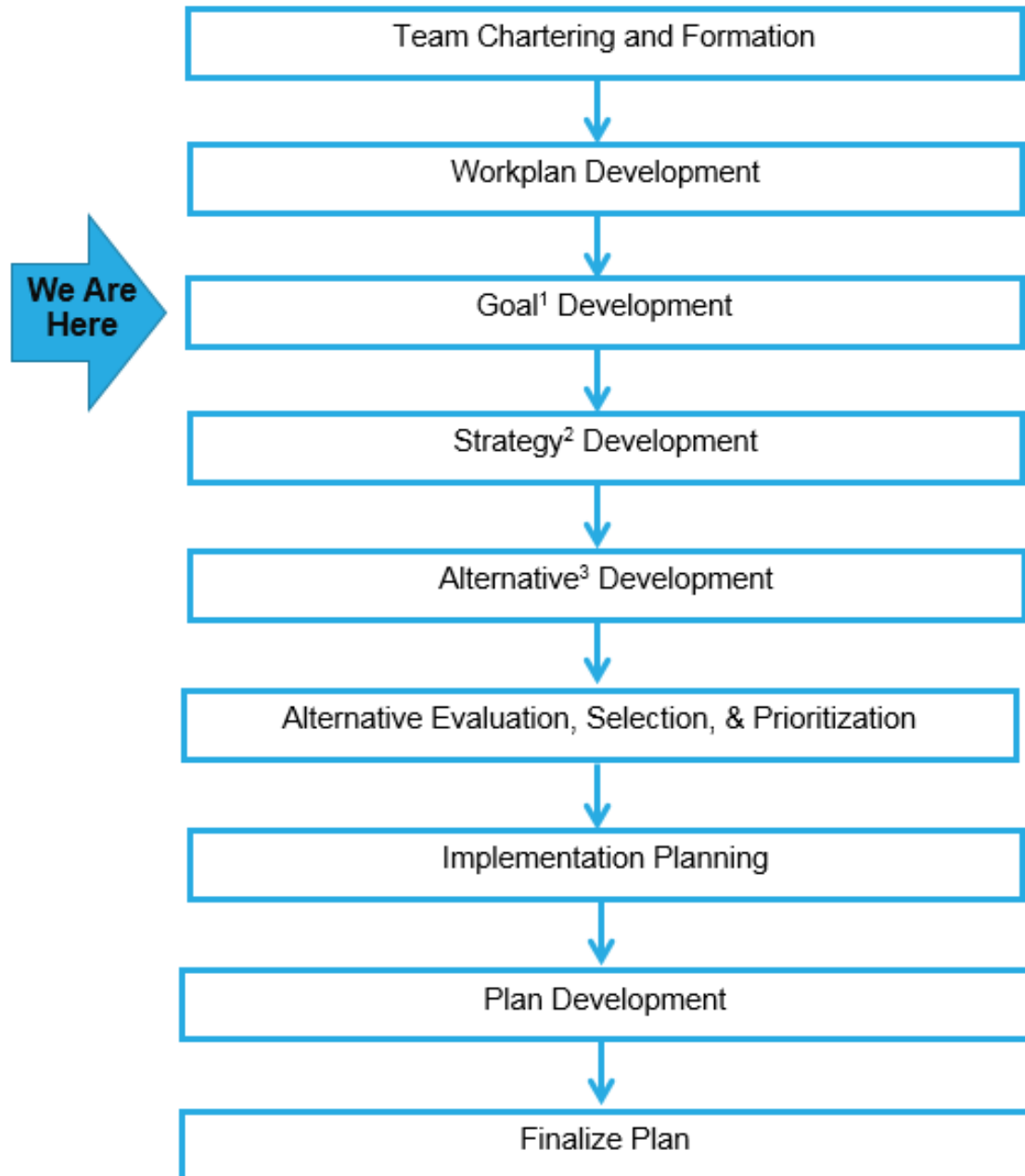
Existing Biosolids, Recycled Water, Energy, and Technology Programs

Vision and Mission



Program Strategies

Overview of Strategic Planning Process



Strategic Plans
Objective and
Purpose



Loop® Biosolids



Recycled Water



Energy



Technology Assessment and Innovation

Four Program Areas

Drivers: High risk

- Logistical burdens with hauling
- Limited capacity for distribution and no secure emergency storage
- Limited number of customers
- Regulatory challenges
- Public perception

Goals

- Consistently achieve 100% beneficial use of Loop biosolids
- Manage a resilient program that can withstand market changes in one or more sectors
- Ensure integration and alignment across WTD



Initial DRAFT Biosolids goals

Initial DRAFT Recycled Water Goals

Drivers

- Reduce discharge to Puget Sound
- Increase clarity on program focus
- Challenges to connecting customers in a timely manner
- Operational reliability

Goals

- Improve service reliability
- Decrease connection time for customers
- Determine opportunities for customer growth
- Ensure integration and alignment across WTD

KING COUNTY TREATMENT PLANTS PRODUCING RECYCLED WATER



Drivers

- Future regulations
- Assess current research and evaluate potential partnerships
- Be prepared to support other WTD programs

Goals

- The Technology Assessment and Innovation Program (TAIP) proactively identifies and responds to potential regulatory changes.
- Ensure the TAIP assessments, investigations and studies are selected and conducted in a strategic manner and integrated across WTD.
- WTD is at the forefront of evaluating, catalyzing and applying new technologies and innovative approaches to wastewater treatment.

Initial DRAFT Technology
Assessment and Innovation
Goals



Goals

- Create a plan to meet King County Strategic Climate Action Plan goals, measures, targets
- Ensure energy decisions are holistic and integrated across division
- Identify decision-making frameworks to ensure energy investments are smart investments

Key Outcomes

- Near-term and long-term action plan

Energy FINAL goals
and outcomes



Energy reduction

Biogas

Heat
recovery

Renewable energy
generation

Teams continue
to refine their
goals

August-
September



Management
Team
discussion

September



Brief MWPAAC
on final goals

October

Next Steps

Questions?

**Steve Tolzman, Project
Manager**

Steve.Tolzman@kingcounty.gov

**Ashley Mihle, Assistant
Project Manager**

Ashley.Mihle@kingcounty.gov



King County

Department of
Natural Resources and Parks
Wastewater Treatment Division