

King County Strategic Climate Action Plan

King County Strategic Climate Action Plan (SCAP) and WTD's Efforts Associated with the SCAP

Sarah Ogier

Supervisor, WTD Office of Sustainability and Innovation

Erika Kinno

Strategic Communications, WTD Stewardship and Sustainable
Resources

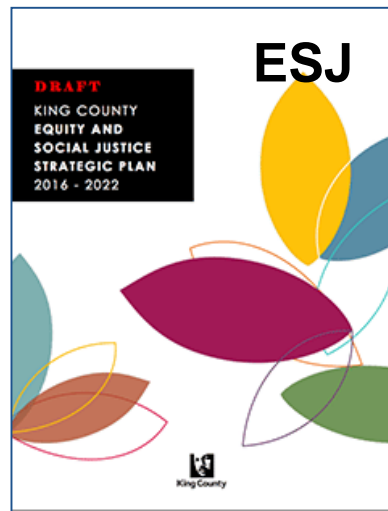
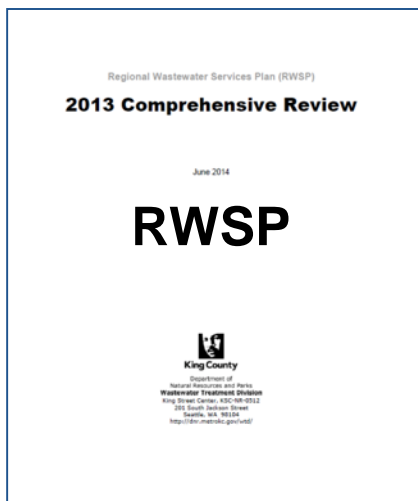
MWPAAC General Meeting

August 24, 2016

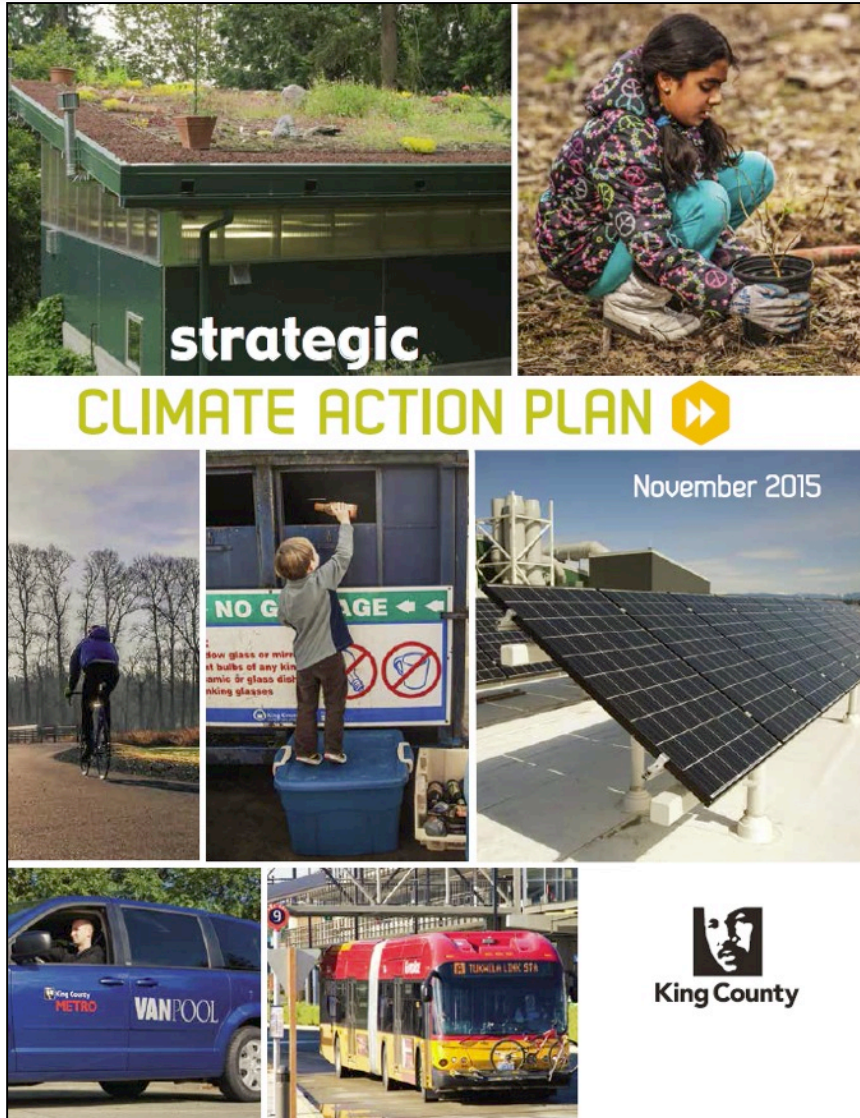
King County Strategic Climate Action Plan



Context:
the King County SCAP is one of many
initiatives and plans that inform
WTD's work



King County Strategic Climate Action Plan



King County Strategic Climate Action Plan

- November 2015: **Unanimously adopted**
- **5-year blueprint** for County climate action

1. Reduce countywide carbon pollution by



2. Prepare our region for the impacts of a changing climate by



**strengthening
community
resiliency**

King County Strategic Climate Action Plan

SECTION ONE: Reducing Greenhouse Gas Emissions



Section One: Reducing GHG Emissions

- **Goal Area 1:** Transportation & Land Use
- **Goal Area 2:** Buildings & Facilities Energy
- **Goal Area 3:** Green Building
- **Goal Area 4:** Consumption & Materials Management
- **Goal Area 5:** Forests and Agriculture

SECTION TWO: Preparing for Climate Change Impacts



Section Two: Preparing for Climate Change Impacts

- Program-specific impacts, ongoing responses, priority actions and long term direction for twelve focus areas



KING COUNTY-Cities

CLIMATE COLLABORATION

What is the K4C?

- Voluntary but formal (Interlocal Agreement) partnership between 13 cities and King County
- Commitments parallel the SCAP
- Partnering on climate change related outreach, coordination, solutions and funding/resources
- Focus areas include green building, renewable energy, climate messaging, and sustainable transportation



CITY OF
MERCER ISLAND



CITY OF
ISSAQUAH
WASHINGTON



King County



City of Seattle





KING COUNTY-Cities
CLIMATE COLLABORATION

Eight MWPAAC members are also K4C members



CITY OF
ISSAQUAH
WASHINGTON



CITY OF
MERCER ISLAND



King County



City of Seattle

King County Strategic Climate Action Plan

Improved Planning Process:

- Highlights and **integrates work of the County's climate related partnerships**, such as the King County Cities-Climate Collaboration (K4C)
- **Developed with stronger community engagement**
- **Developed by interdepartmental teams**, which started with the big picture
- **Clearly links actions to outcomes** in reducing GHG emissions and achieving climate goals

King County Strategic Climate Action Plan

How is WTD responding?



1. Reduce countywide carbon pollution by



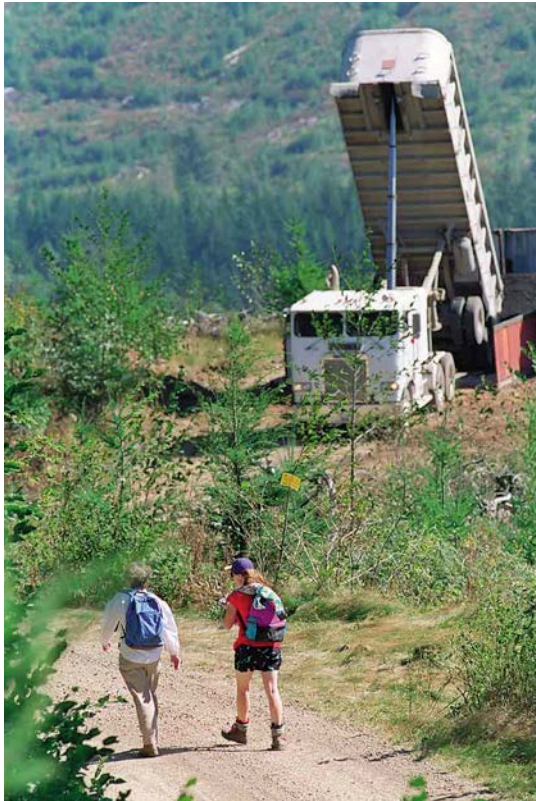
2. Prepare our region for the impacts of a changing climate by



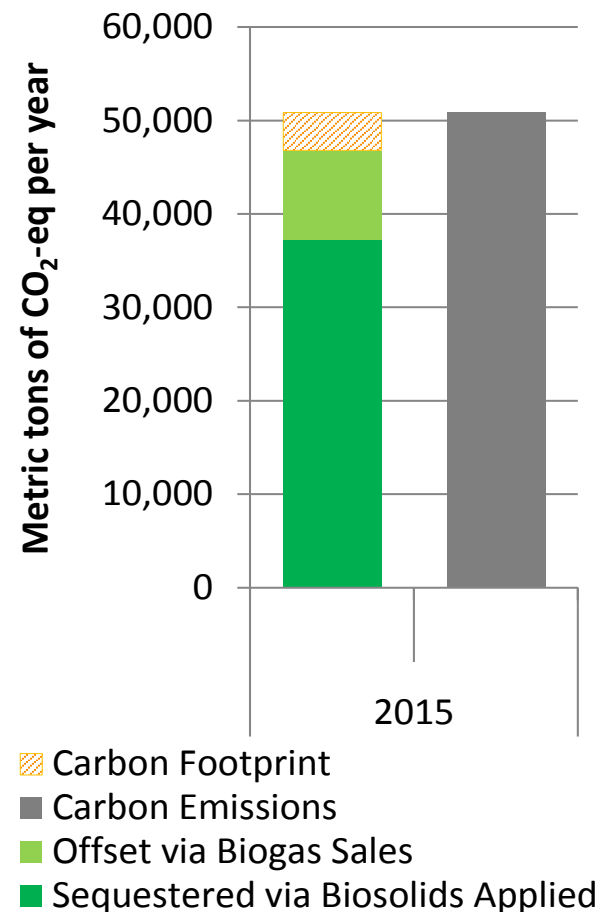
**strengthening
community
resiliency**

King County Strategic Climate Action Plan

Aiming for
Carbon Neutral Operations
by 2025



WTD Carbon Off-Sets and Emissions



King County Strategic Climate Action Plan

Reducing Energy Use 5% by 2020



Lighting upgrades, system
maintenance and optimization

King County Strategic Climate Action Plan

Reducing Fleet Fuel Use 10% by 2020



Loop trucks

King County Strategic Climate Action Plan

Producing Renewable Fuel Sources



WTD use of bio-methane:
co-generation at West Point

King County Strategic Climate Action Plan

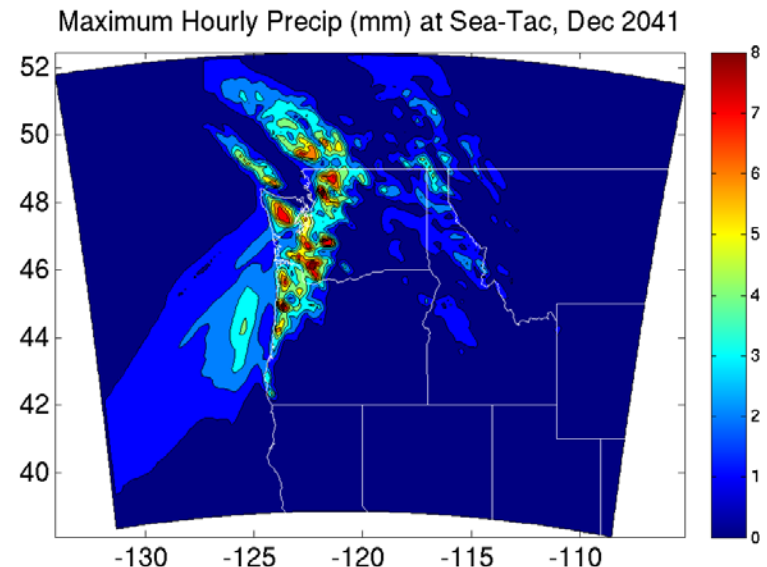
Preparing For Climate Change – helping the region cope with drought



Recycled water

King County Strategic Climate Action Plan

Preparing For Climate Change – climate studies and evaluation of facility vulnerabilities



Precipitation study

King County Strategic Climate Action Plan

Future Challenges...

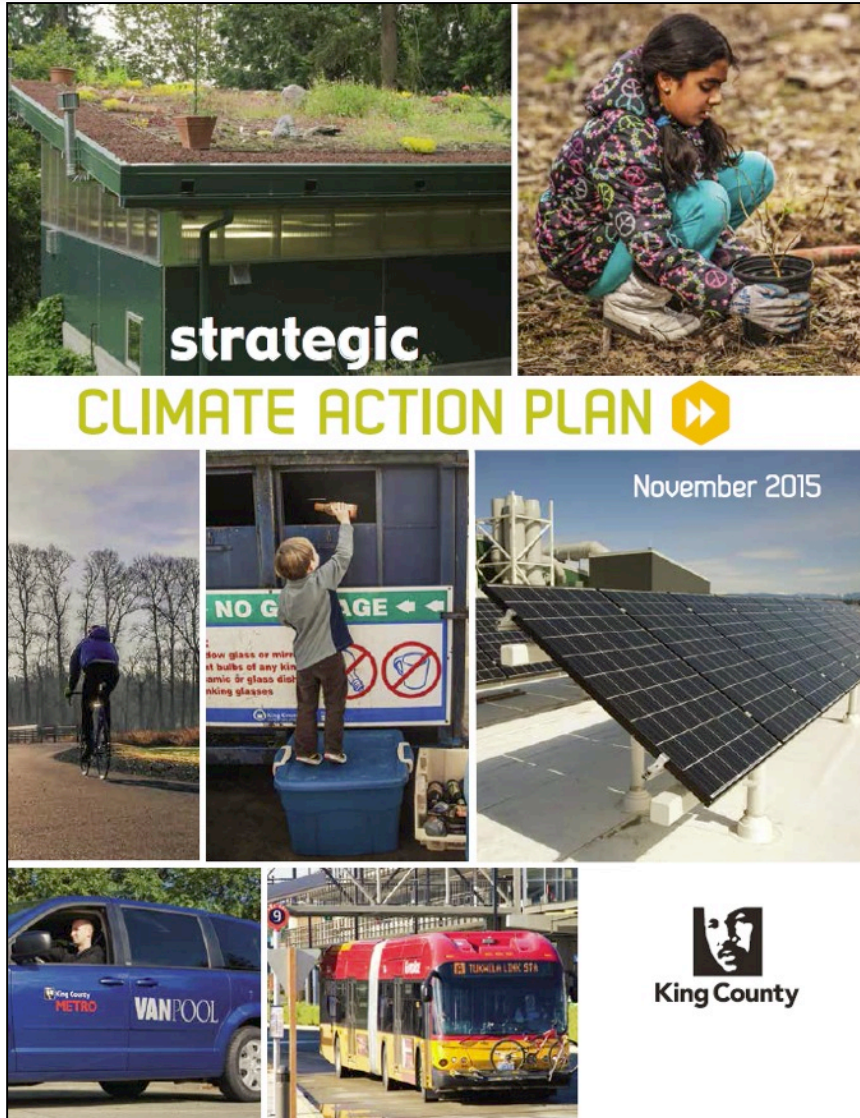
- Making future facilities solar ready
- Meeting stringent energy codes
- Conserving even more energy
- Construction and demolition waste recycling



Conclusion:

WTD is reducing regional climate impacts and adding resiliency to our wastewater system

King County Strategic Climate Action Plan



Questions?