

CSI Program Update: Status Report

MWPAAC E&P Subcommittee
April 2, 2015



King County

Department of Natural Resources and Parks
Wastewater Treatment Division

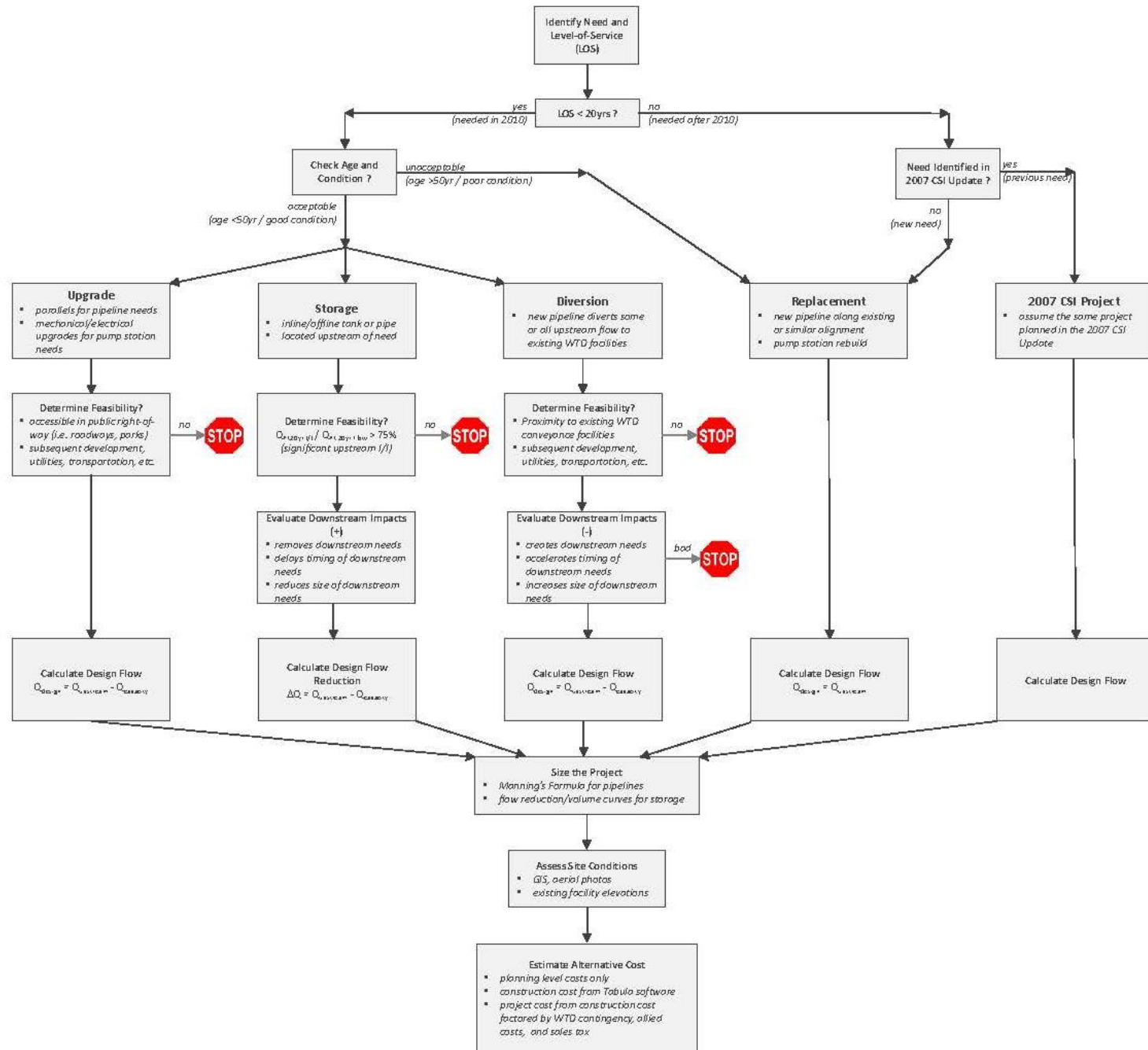


Today's Presentation

- ▶ Overview of Current CSI Program Update Activities:
 - Draft flow chart of process to select conceptual project alternatives
 - Projects to address conveyance components with Pre-2010 level of service of <20 year flow



Process to Select Alternatives for CSI Needs – **DRAFT**



Projects to Address Conveyance Components with pre-2010 Level of Service of < 20 Year Flow

• Boeing Creek Storage	• McAleer Trunk
• Richmond Beach Storage	• Lake Ballinger PS
• Medina Storage	• Thornton Creek Interceptor
• Factoria Trunk PS and Diversion	• Garrison Creek Trunk Parallel
• Yarrow Bay PS	• ULID #1 Contract #4 Trunk Parallel
• North Mercer Pump Station	• ULID 250 – Kent
• Tukwila Freeway Crossing	• Soos Creek PS D with Conveyance
• Tukwila Interceptor	• Soos Creek PS H with Conveyance
• Swamp Creek–Section 1B Parallel	• Sammamish Plateau Diversion
• Upper North Creek Parallel	• Eastgate Parallel Pipe Storage
• Lower North Creek Parallel	

Some Observations from Work Completed to Date

- ▶ Condition assessments since 2007 resulting in further consideration of previous concepts. For example:
 - Richmond Beach Storage
 - Upper North Creek Parallel

Next Steps

- ▶ Complete process to develop conceptual projects
 - Identify options (replace, parallel, storage)
 - Sizing of options
 - Planning level evaluation of options
 - Local agency input
 - GIS review of site conditions
 - Cost estimating
 - Project prioritization



For additional information or questions, please contact:

Steve Tolzman, Project Manager

CSI Program Update

Wastewater Treatment Division

206.477.5459

Steve.Tolzman@kingcounty.gov