



King County

Protecting Our Waters

Doing our part on rainy days

Water Quality Assessment and Monitoring Study Update

March 2017

Review and Input Improve the Study

Since work began on the Water Quality Assessment in 2012, King County's goal has been to make sure the scientific methods and results would be high quality, thorough, and objective. So we invited reviewers outside of King County to look at our plans, findings and draft documents throughout the process.

The study is a comprehensive, scientific look at water quality in water bodies where King County has uncontrolled CSOs. This extra review ensures that King County and others can rely on the results to make decisions to improve water quality. King County will publish the Water Quality Assessment's 10 documents in mid-2017.

Why an assessment?

The assessment will inform King County's **Combined Sewer Overflow (CSO) Program**, now called **Protecting Our Waters**. The assessment will help ensure that investments in CSO control are well planned to optimize water quality improvements in Elliott Bay, Lake Union, the Lake Washington Ship Canal, and the Duwamish Estuary.

Independent Experts

A [Science and Technical Review Team](#) reviewed every step of the process. The five members are independent technical experts in water quality, environmental science and engineering. They are not affiliated with King County. They reviewed the project approach and helped select the additional studies that King County conducted as part of the larger assessment. They met more than 20 times to review the study plans, findings, and draft documents.

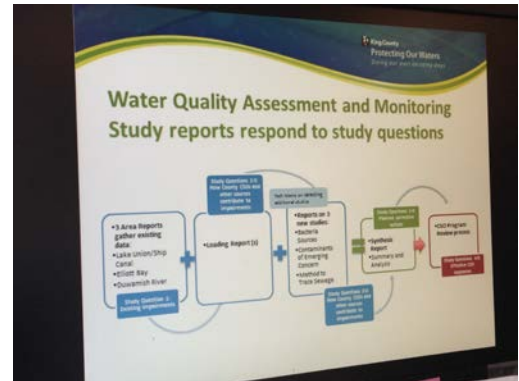
Virgil Adderley	Principal Engineer	Portland Bureau of Environmental Services, (formerly); Thames Tideway Tunnel (currently)
Mike Brett, PhD	Professor of Environmental Engineering	University of Washington
Jay Davis	Resource Contaminants Specialist	U.S. Fish and Wildlife Service
Ken Schiff	Deputy Director	Southern California Coastal Water Research Project (SCCWRP)
John Stark, PhD	Professor of Ecotoxicology and Director	Washington State University Puyallup Research & Extension Center

Many Reviewers

King County also hosted more than 30 meetings with elected officials, other leaders, and interested parties, including these:

- The City of Seattle
- The Washington State Department of Ecology
- The Port of Seattle
- Tribal governments
- Environmental groups

We sent these Project Update newsletters to about 400 interested parties. And we keep the project [library](#) updated with presentation materials and meeting summaries.



Reviewers Shaped the Project:

Reviewers influenced the project from design to the soon-to-be published documents. They commented on:

- Project scope, which the King County Council ultimately adopted
- Science and Technical Review Team membership
- Tools used to keep people informed and involved in the process
- Additional studies to fill data gaps
- Findings and draft technical documents

Next Steps

King County will publish the 10 reports documenting the Water Quality Assessment and Monitoring Study in mid-2017 and use the results to guide its work to control CSOs. As a leader in water quality, the County will share the assessment with partner organizations, including the City of Seattle, other scientists, and interested parties to use improving regional water quality.

Find out more on the Web at <http://www.kingcounty.gov/services/environment/wastewater/cso/projects/water-quality-study.aspx> or by contacting **Erika Peterson** at **206-477-5525** or Erika.peterson@kingcounty.gov. [Click here](#) to sign up or unsubscribe to this newsletter. Select "WTD - Water Quality Assessment Update" from the list.