

COMMUNITY SERVICE AREAS



Community Service

Areas offer expanded ways for King County to engage with more than 200,000 residents who live outside city boundaries.



All unincorporated area residents should have the opportunity for meaningful involvement in the decisions that impact their communities.

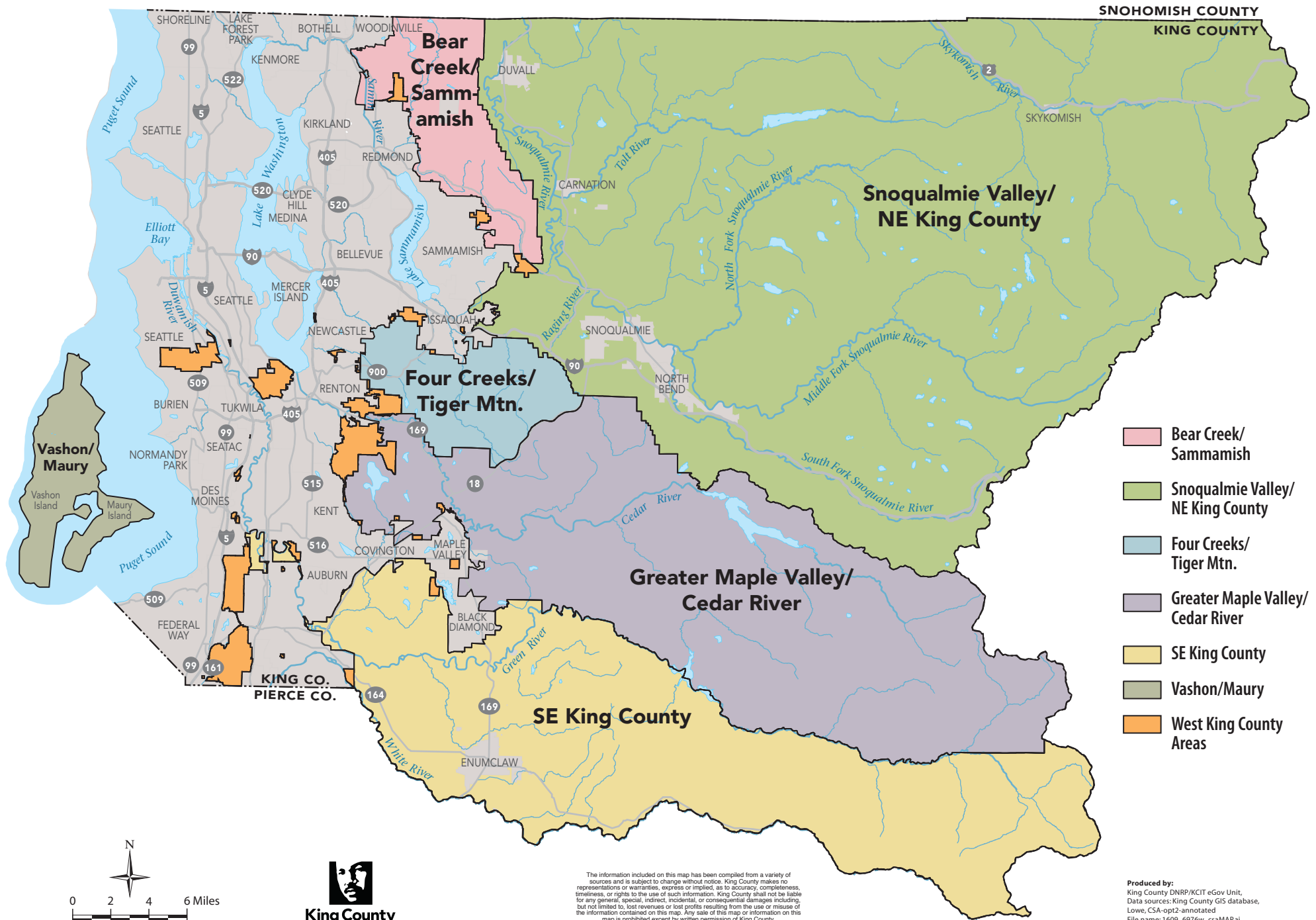
– Dow Constantine,
King County Executive



King County

[kingcounty.gov/exec/
community-service-areas](http://kingcounty.gov/exec/community-service-areas)

Unincorporated King County **Community Service Areas**



COMMUNITY SERVICE AREAS ARE

Bear Creek/Sammamish Area is the rural area east of Woodinville, Redmond and Sammamish, includes the Redmond Ridge Urban Planned Development and the Sammamish Valley Agriculture Production District (APD). This forested area is characterized by several lakes, including Cottage Lake; the Sammamish River Valley which contains both the APD and the Sammamish River Trail, along with hills to the south and east.

Snoqualmie Valley/Northeast King County Area includes the rural area surrounding the rural cities of Duvall, Carnation, Snoqualmie, North Bend and Skykomish, along with the rural towns of Fall City and Snoqualmie Pass. The eastern portion of this CSA is the Snoqualmie Valley which contains the Snoqualmie Valley Agriculture Production District and several rural cities and towns. The majority of the land area in this CSA is made up of the forested Cascade Range which contains portions of the Mount Baker – Snoqualmie National Forest, and the Alpine Lakes Wilderness Area.

Four Creeks/Tiger Mountain Area lies east of the cities Renton and Newcastle and east and south of Issaquah and contains the May Valley Basin and the foothills of the Cascade Range, including Cougar Mountain Regional Wildland Park, Squak Mountain State Park and Tiger Mountain State Forest.

Greater Maple Valley/Cedar River Area lies east of the cities of Renton and Kent and north of Covington, Maple Valley and Black Diamond and extends east to the border with Kittitas County. The western portion of this CSA has low rolling hills with several lakes, while the eastern portion moves into the Cascade Range, including portions of the Forest Production District and part of the Mount Baker-Snoqualmie National Forest.

Southeast King County Area is south of Maple Valley, Covington and Black Diamond, east of Auburn, surrounds the City of Enumclaw. The northeastern portion of this CSA contains the lower and middle Green River basins, and includes the Middle Green River Valley Agriculture Production Districts along with Hanging Gardens State Park, Kanaskat-Palmer State Park, Nolte State Park and Flaming Geyser State Park. To the south and slightly east of the river basins is the Enumclaw Plateau. The land further to the east is forested and contains a portion of the Mount Baker-Snoqualmie National Forest.

West King County Area includes urban unincorporated areas of King County including East Federal Way, North Highline, West Hill, Fairwood and East Renton. These communities represent potential annexation areas to neighboring cities.

Vashon/Maury Island Area encompasses the entirety of Vashon-Maury Island. Accessible only by ferry or boat, the island is home to a rich mix of parks, beaches and local craft and agricultural production.



King County

Department of
Natural Resources and Parks

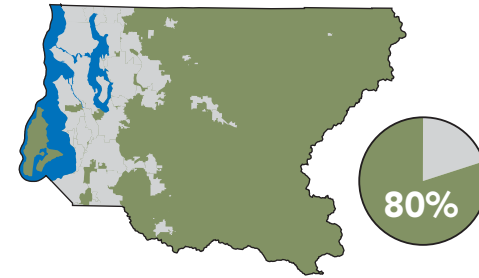
COMMUNITY SERVICE AREA (CSA) PROGRAM

King County serves as the local government for residents of unincorporated areas.

The Community Service Area (CSA) Program promotes strong public engagement that informs, involves, and empowers people and communities by:

- **Expanding outreach and communication** to a wide range of community organizations in unincorporated King County.
- **Creating improved online information** with a website that includes County contact information, information on each CSA, and CSA work plans.
- **Identifying a primary point of contact** that will function as a liaison, ombudsman, and provide County information for residents of each CSA.
- **Providing CSA Work Plans** that describe the County's goals for the CSA, on-going services and projects in the CSA, and work with CSA residents and organizations to identify local issues.
- **Holding CSA-wide meetings**, including an annual meeting, to introduce the work plans, provide residents opportunities to meet with County leadership and address needs and issues within the CSA as necessary.
- **Providing funding through the CSA Grant Program** that will provide matching support to community initiated projects through an annual grant application process.

GOAL BACKGROUND



Unincorporated areas cover 80 percent of King County's land area.

In 2010, the King County Council sought a new approach for meeting with and listening to residents in unincorporated areas. In response, Executive Constantine proposed creating a "robust public engagement program that informs, involves and empowers people and communities" throughout the unincorporated areas. With guidance from the County's strategic plan, the County has established a positive framework for public engagement in unincorporated areas and created seven CSAs to represent all unincorporated residents and communities.

Guidance from the King County Strategic Plan

Promote robust public engagement that informs, involves, and empowers people and communities

- Expand opportunities to seek input, listen, and respond to residents,
- Empower people to play an active role in shaping their future, and
- Improve public awareness of what King County does.

ONGOING STEPS

- Meet with community organizations and area residents throughout the seven Community Service Areas.
- Help improve communication between King County departments and King County residents and provide assistance troubleshooting community problems as they arise.
- Inform County leadership of key issues of interest and concern to area residents.
- Provide annual work plans for all Community Service Areas.
- Hold annual meetings in each CSA.
- Work with CSA residents and organizations to identify local needs and issues.
- Award CSA Grants.

MORE INFO

kingcounty.gov/exec/community-service-areas

Alan Painter, Community Service Area Manager,
206-477-4521, alan.painter@kingcounty.gov

Marissa Alegria, Community Liaison,
206-477-4523, marissa.alegria@kingcounty.gov

Bong StoDomingo, Community Liaison,
206-477-4522, bong.stodomingo@kingcounty.gov

Alternate formats available
Call 206-477-4700 or TTY:711

Translation services available upon request.