

March 2018

Equitable Development Initiative Regional Affordable Housing Task Force Presentation

Ubox Gardheere

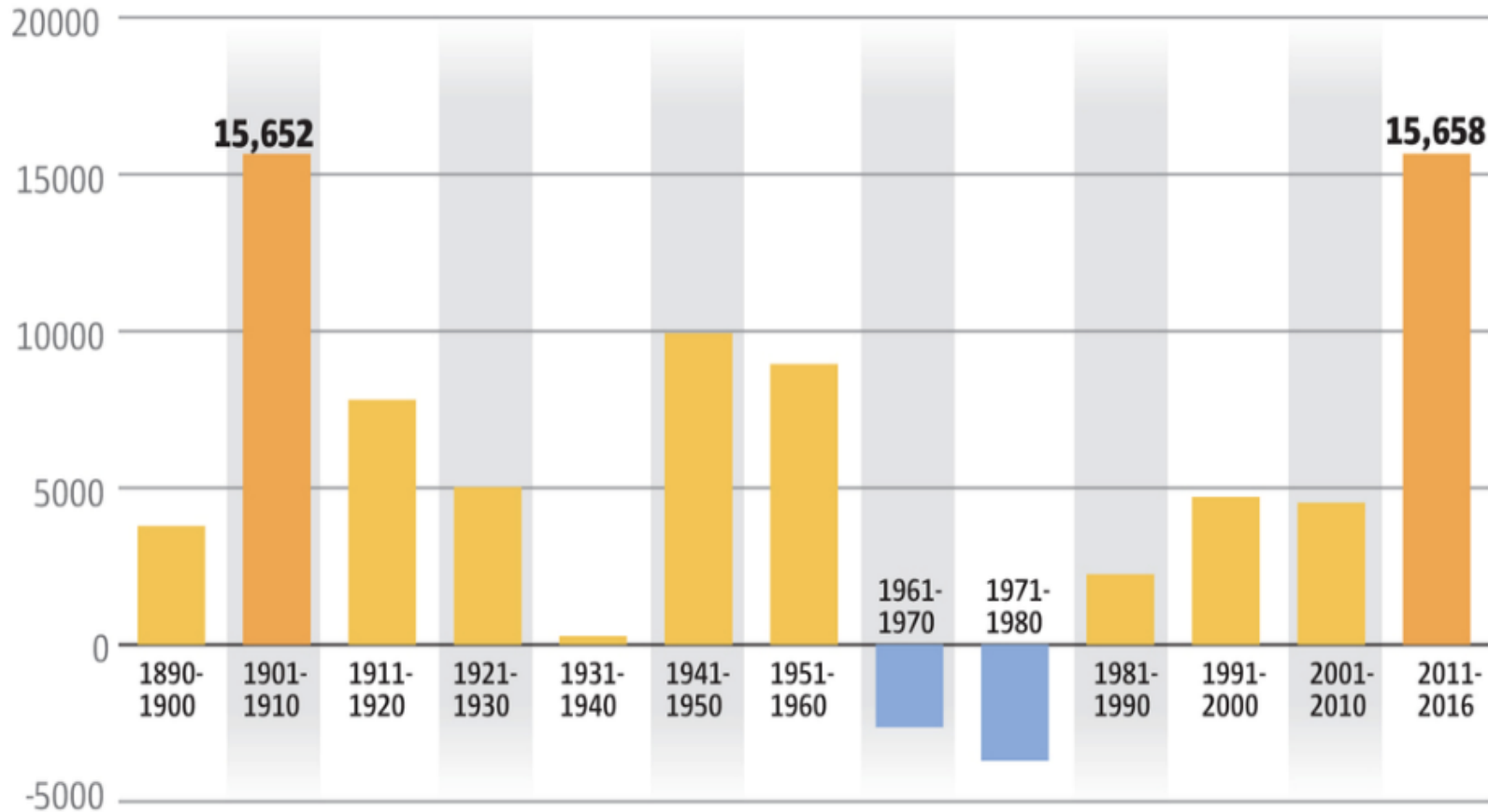
Equitable Development Initiative Manager

Seattle Office of Planning and Community

Development

A lot of people are moving here

Average annual population gain in Seattle by decade



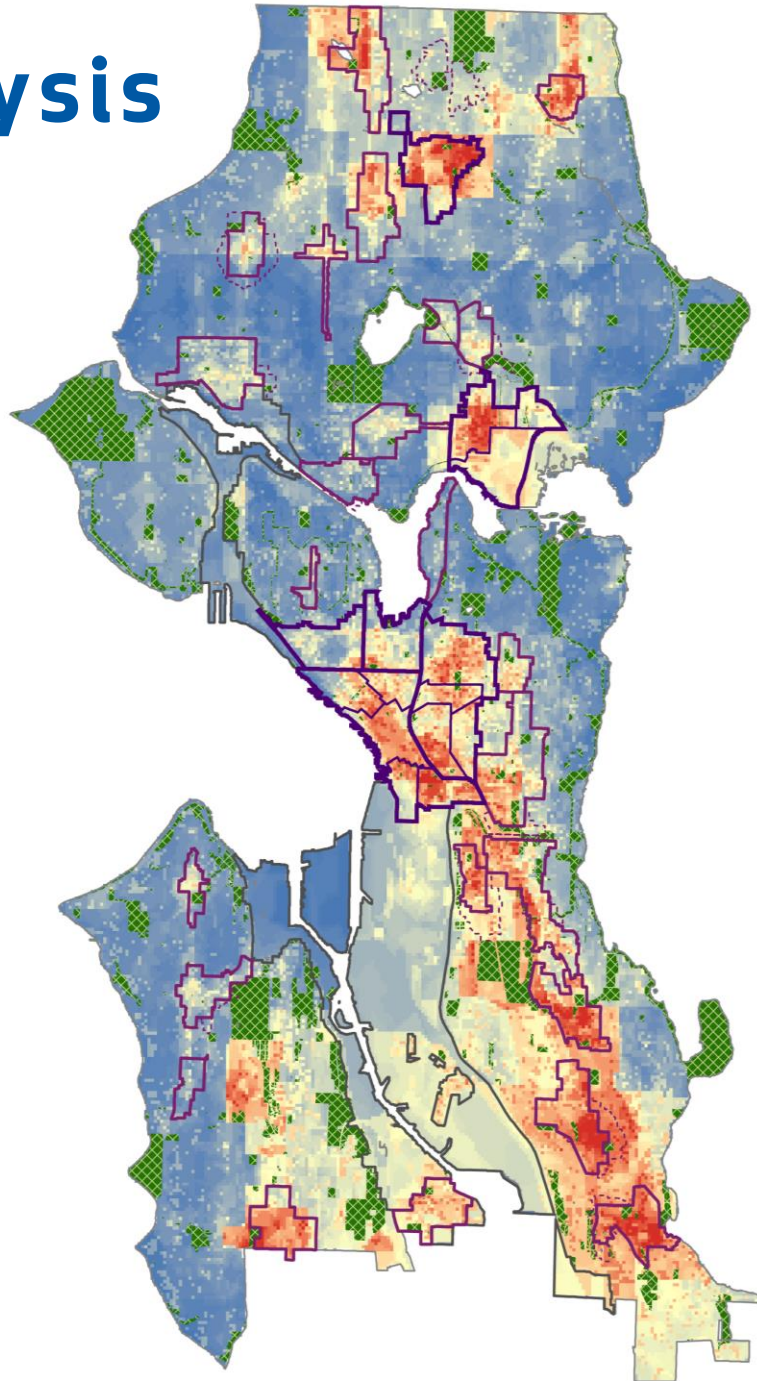
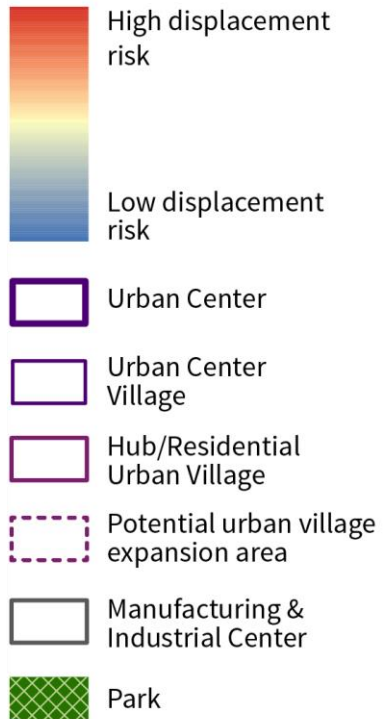
The “Amazon rush” has topped the Gold Rush in annual population growth

Source: U.S. Census Bureau

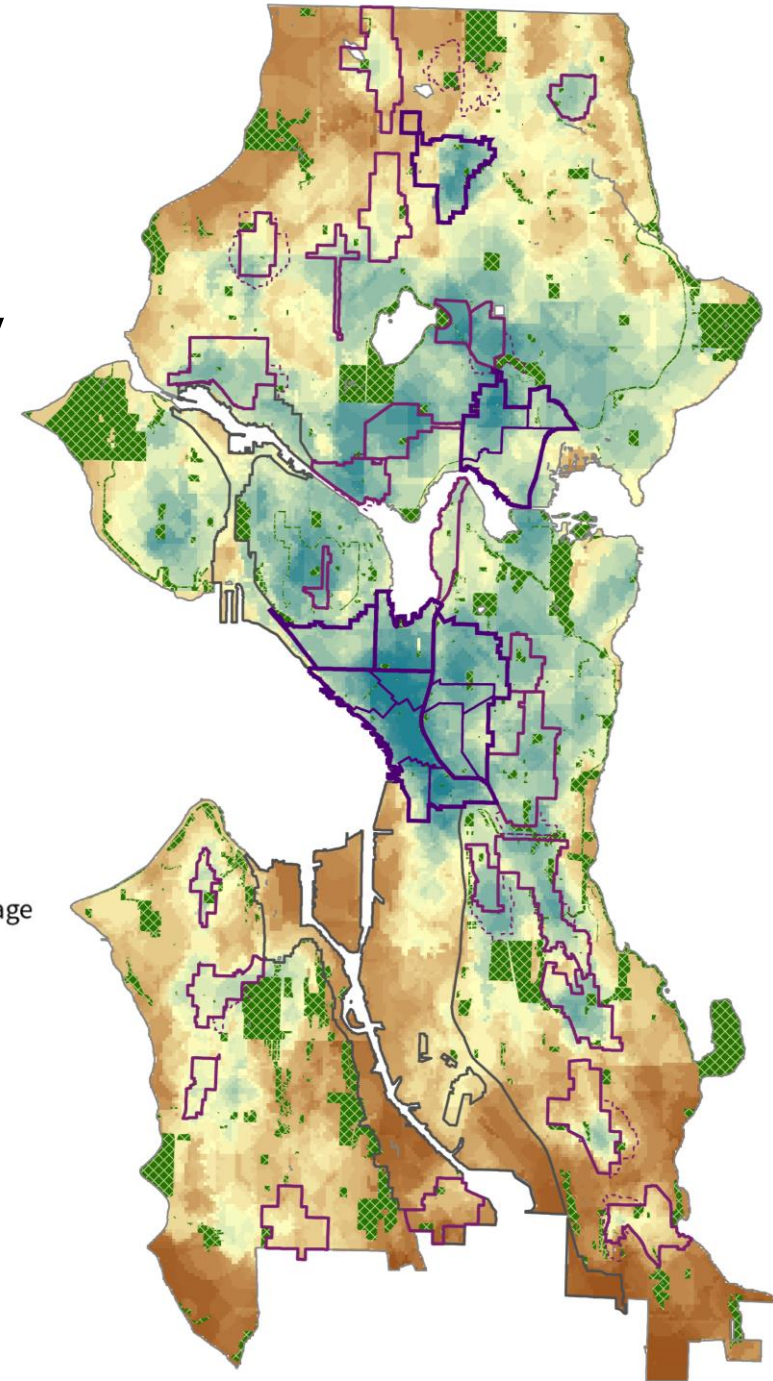
MAR

Equity Analysis

Risk of Displacement



Access to Opportunity



Equitable Development Framework: Strong People, Strong Communities

Strategies to achieve community stability and resilience in the face of displacement, and great neighborhoods with access by all:



Advance economic mobility and opportunity.



Promote transportation mobility and connectivity



Prevent residential, commercial, and cultural displacement.



Develop healthy and safe neighborhoods



Build on local cultural assets.



Provide equitable access to all neighborhoods

What is Equitable Development?

- **Quality of life outcomes** are equitably experienced by the people currently living and working in a neighborhood, as well as for new people moving in.
- **Public and private investments, programs, and policies** meet the needs of residents, including communities of color, reduce racial disparities, and take into account past history and current conditions.

Equitable Development Initiative

- Equity Analysis as companion to the EIS to inform Growth Strategy
- Race and Social Equity Goals and Policies in the Comprehensive Plan
- Equitable Development Implementation Plan

Equitable Development Implementation Plan

- Equitable Development Framework
- Systemic Change
- Targeted strategies: Place-based and citywide
- Stewardship

Equitable Development Initiative Fund

Investment in targeted place-based strategies

FUNDING

- \$16M from City Plaza sale and
- \$430,000 CDBG for 2018
- \$5M annually from AirBNB tax starting 2019

WHY

Address historic and market inequities through investing in projects and programs that mitigate displacement and increase access to opportunity.

HOW

- Community Capacity Development
- Project Development

**Together we can leverage our collective resources
to create communities of opportunity for
everyone, regardless of race or means.**



**And all communities are able to determine
their own futures.**

OPCD