

June 25, 2019

Personnel Board Election
Official General Election Ballot

sample

Instructions

Voter eligibility

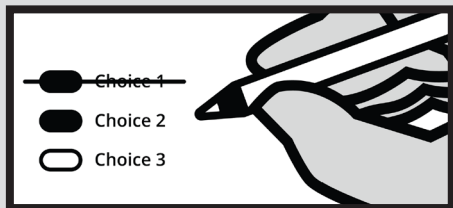
This election is authorized under King County Code 3.08. Only career service employees of King County are eligible to vote.

How to vote



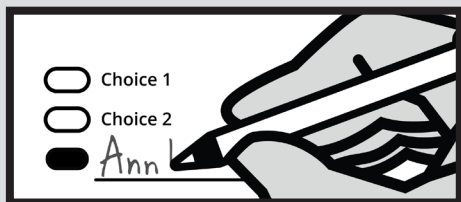
Completely fill in the oval next to your choice.

How to correct a mistake



To make a correction, draw a line through the entire choice. You then have the option of making a different choice by completely filling in another oval.

Optional write-in



To add a new candidate, fill in the oval next to the write-in line and print the name on the write-in line.

Returning your ballot

Insert completed ballot into the response envelope and sign the oath.

Return your ballot by mail without a stamp. For this election only, you may also send your ballot through interoffice mail. Ballots must be received by 4:30 p.m. on June 25, 2019, postmarks not accepted.

King County Personnel Board

Career Service Representative

unexpired 2-year term
vote for one

☐ Joshua Casey

As a CPA, and member of a profession that society trusts, I will deliver fairness, independence, and understanding as an elected member of the Personnel Board. I will work with fellow board members to make sure my voice is heard and, if necessary, challenge other members when I disagree with their decisions or if I believe they are overlooking key aspects of a decision. I understand the importance of having an unbiased approach and a representative on the Personnel Board you can trust to understand any grievance brought forward - and as someone unaffiliated with the government and, with an obligation in my profession to adhere to a strong sense of ethics, I would be proud to serve in this role.

☐ Robert A. Radford

My candidacy brings, to the Personnel Board, years of experience in rendering decisions specifically involving personnel matters of grave concern to both management and labor. As a school principal, for 12 years in Seattle schools, required that I be involved in many arbitration issues.

While head of both the national offices of Runaway and Homeless youth, and Migrant Head Start, and deputy Associate Commissioner for Head Start, I was engaged in personnel decisions that assured fairness and dignity in the treatment of personnel on both sides of the dispute.

Also while charged with the responsibility of desegregating the workforce for Crown Zellerbach Corporation in 1966-1970, I was able to achieve this goal by June 1970. This effort required successful negotiations with organized labor and management.



End of Ballot

i Candidate statements

The statement following each candidate's name was submitted by the candidate. King County Elections does not edit or verify the information.