

# BUILDING EQUITY & OPPORTUNITY

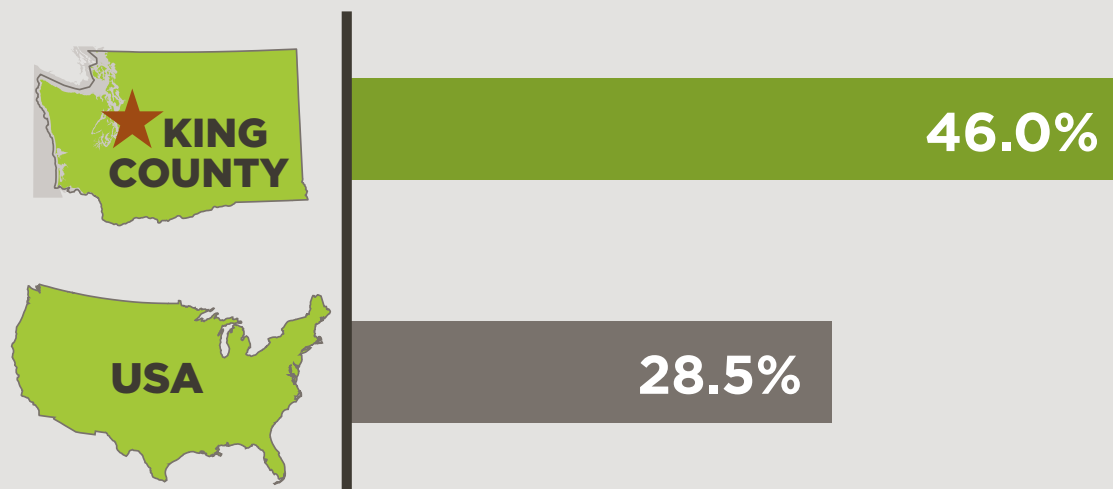
WHAT DOES IT MEAN FOR KING COUNTY? WHAT IS KING COUNTY DOING ABOUT IT?

AT A GLANCE, KING COUNTY IS A GREAT PLACE TO LIVE, LEARN, WORK AND PLAY.



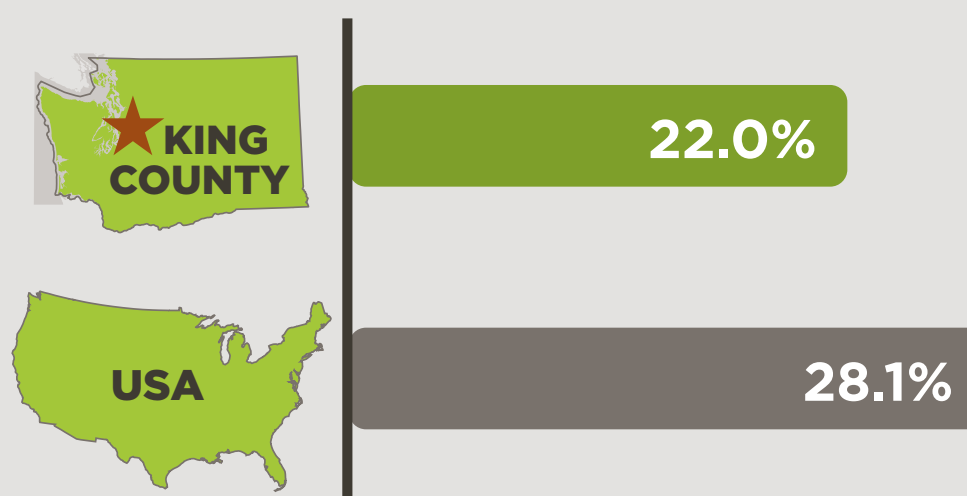
## HIGHLY EDUCATED

PEOPLE 25+ YEARS OLD WITH BACHELOR'S DEGREE OR HIGHER EDUCATION

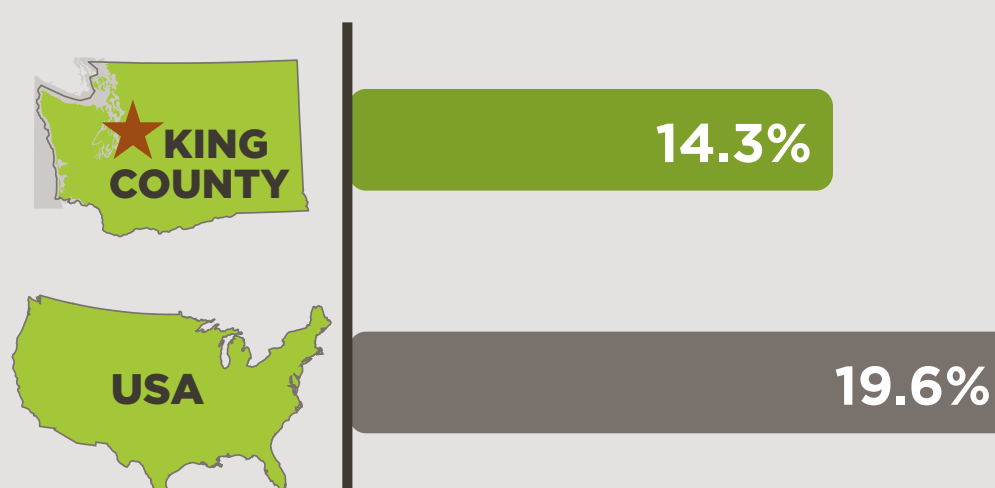


## GOOD HEALTH

OBESE ADULTS

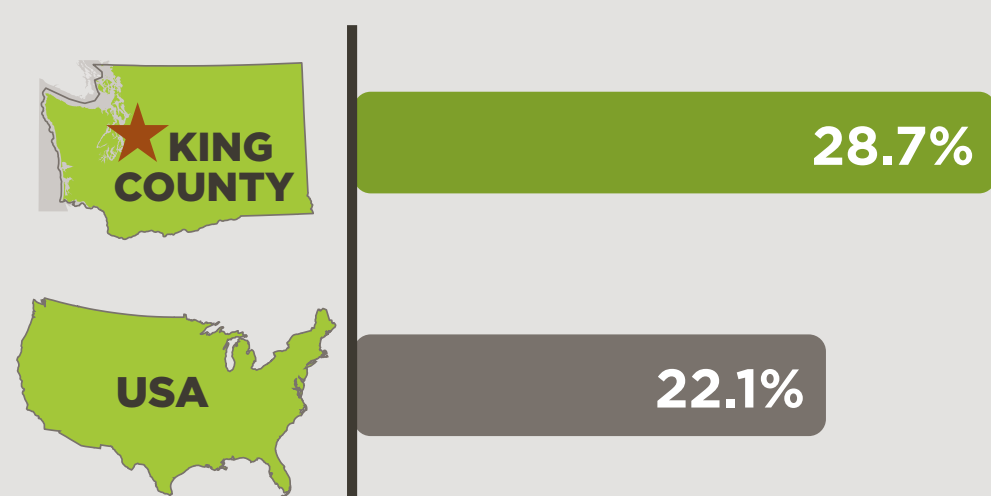


ADULTS CURRENTLY SMOKING

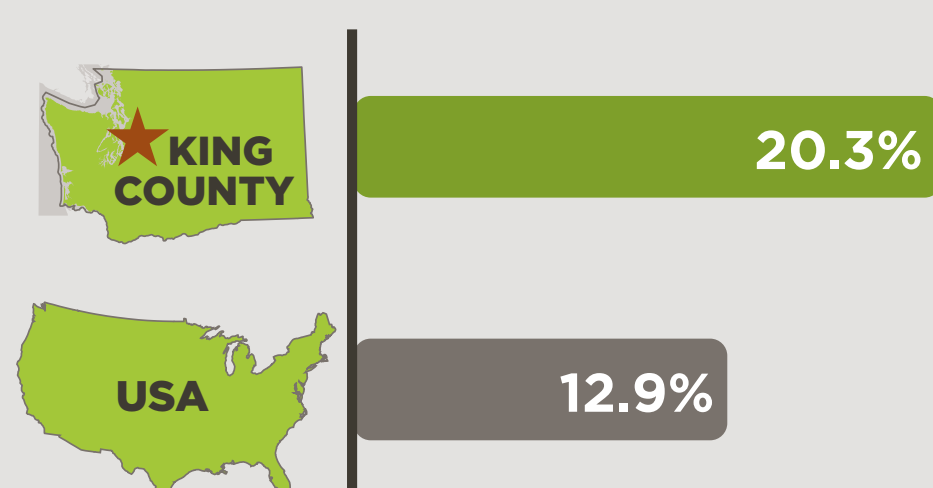


## DIVERSE AND GLOBAL COMMUNITY

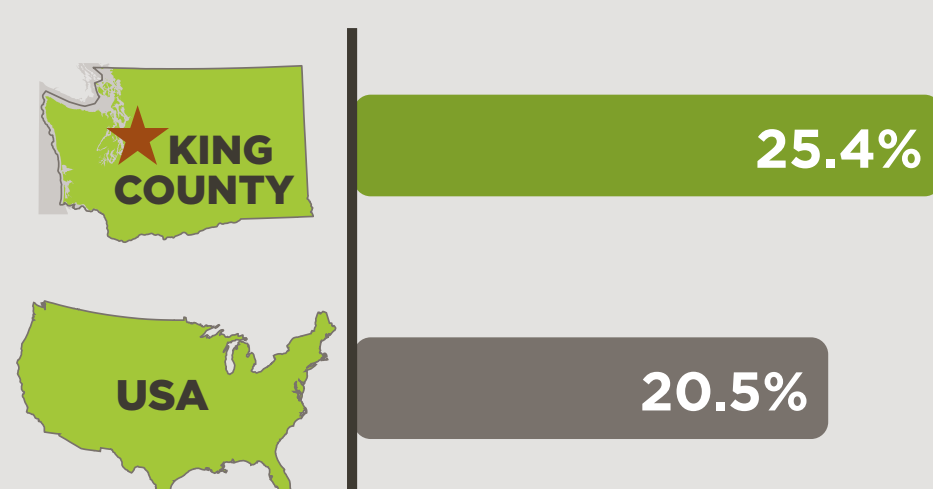
PEOPLE OF COLOR



FOREIGN BORN

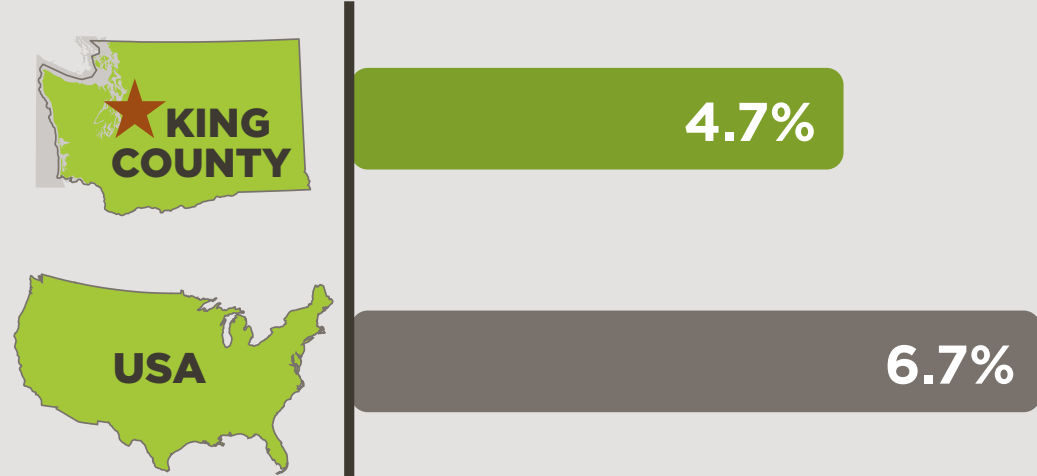


PEOPLE (5+ YEARS OLD) WHO SPEAK A LANGUAGE OTHER THAN ENGLISH AT HOME



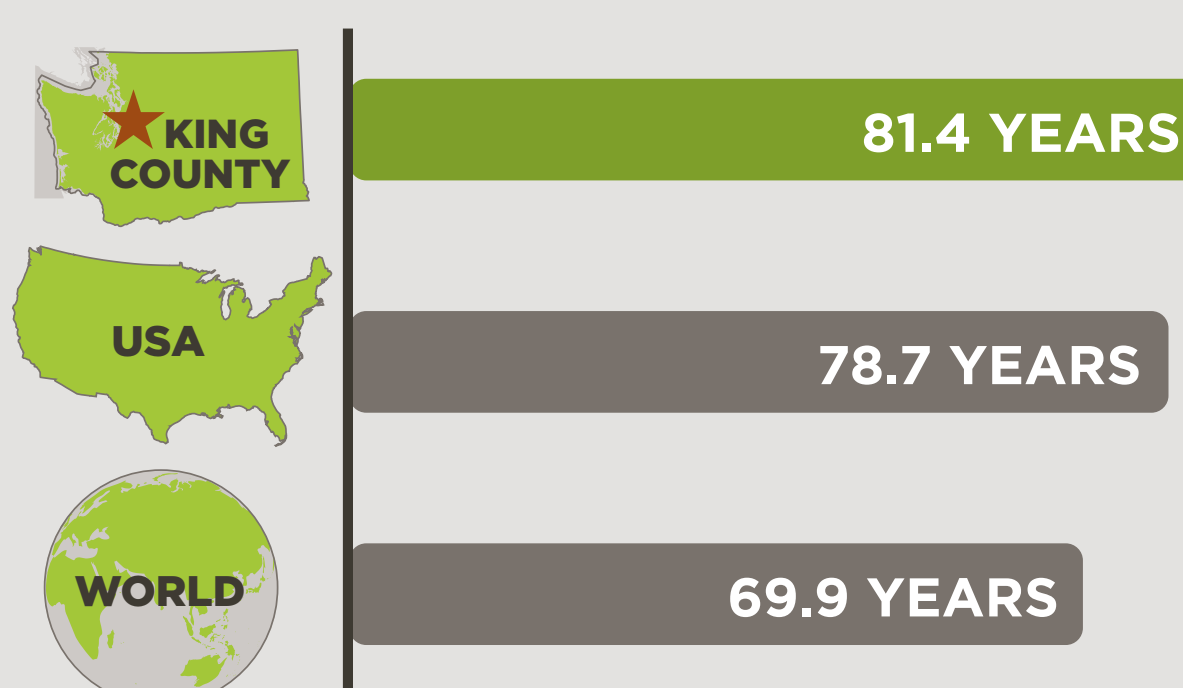
## LOWER UNEMPLOYMENT

UNEMPLOYMENT RATE (Dec. 2013)



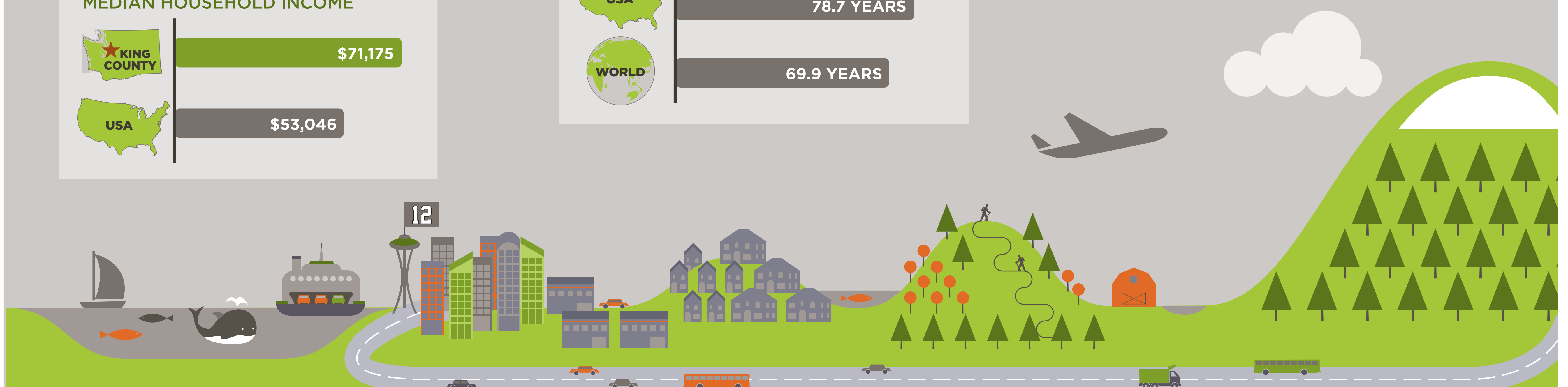
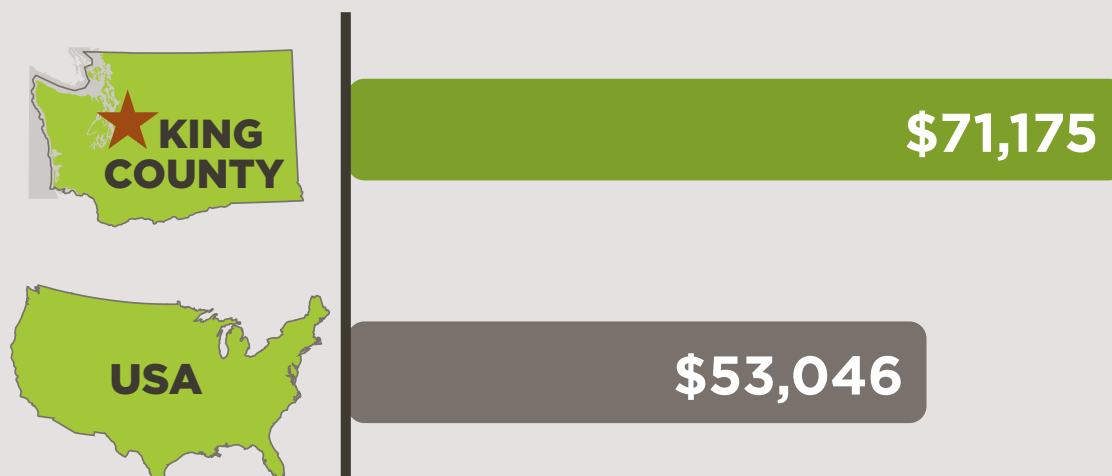
## HIGH LIFE EXPECTANCY

LIFE EXPECTANCY AT BIRTH



## STRONG HOUSEHOLD INCOME

MEDIAN HOUSEHOLD INCOME



A ROBUST AND INNOVATIVE ECONOMY, STUNNING NATURAL BEAUTY, A THRIVING CULTURAL AND ARTS SCENE, AND AN OPENNESS TO DIVERSITY MAKE KING COUNTY A VIBRANT HOME TO OVER 2 MILLION RESIDENTS.

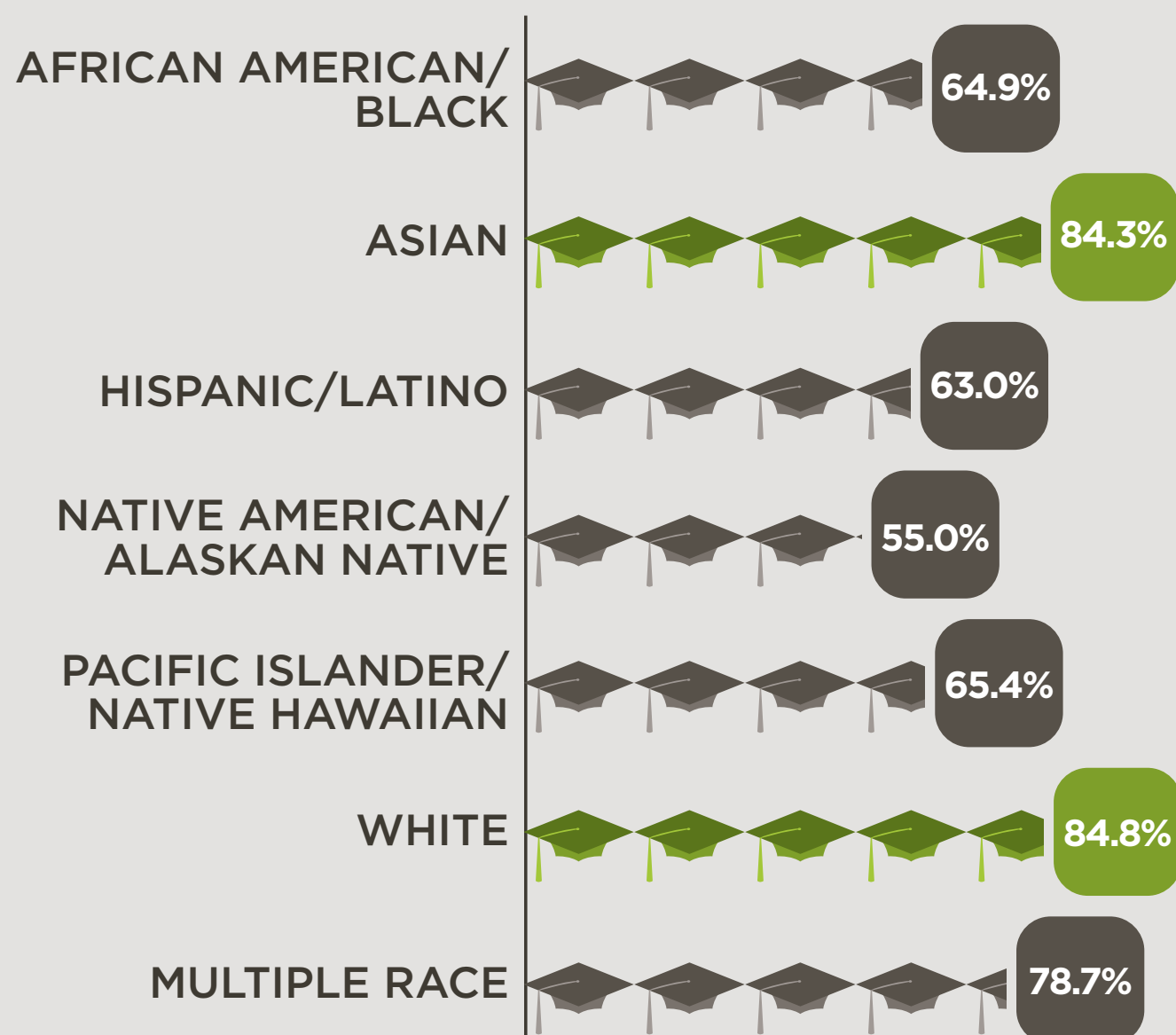
BUT WHEN YOU LOOK CLOSER, SIGNIFICANT PORTIONS OF OUR COMMUNITY ARE BEING LEFT BEHIND. (1 of 2)



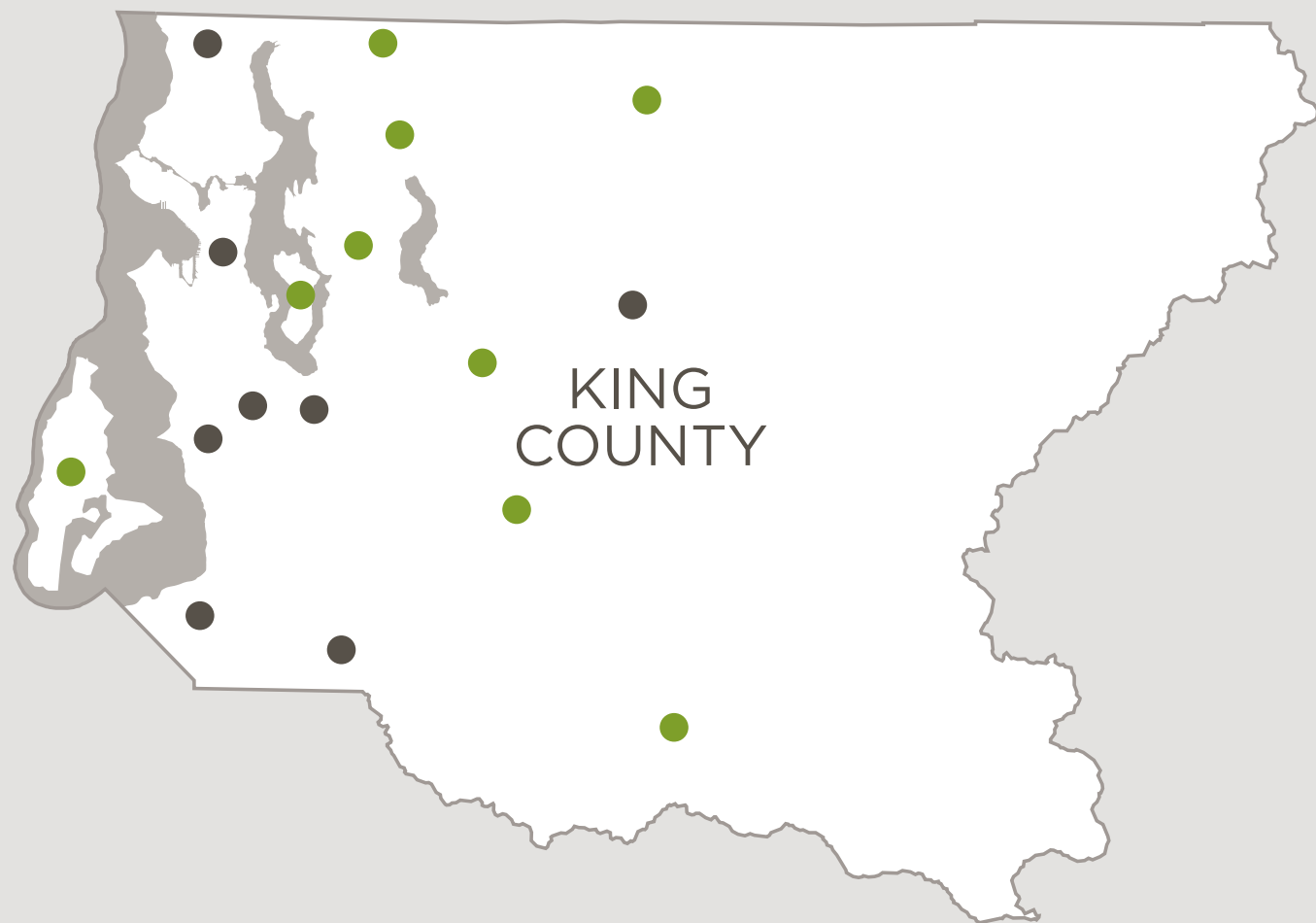
**EDUCATION**  
ON-TIME HIGH SCHOOL  
GRADUATION RATES

**BY RACE**

■ ABOVE KING COUNTY (KC) AVERAGE  
-- KC AVERAGE: 79.4%  
■ BELOW KC AVERAGE



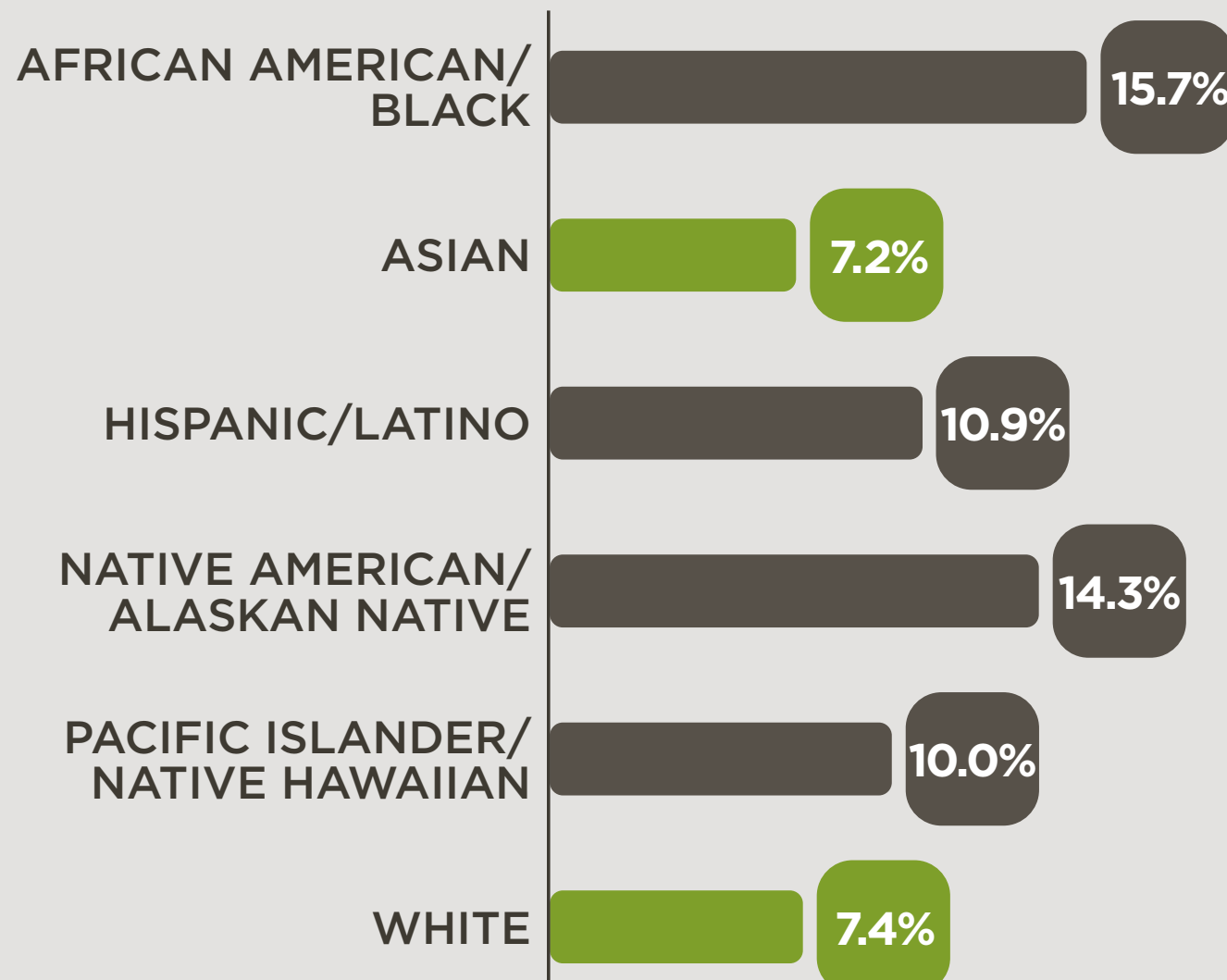
**BY PLACE**



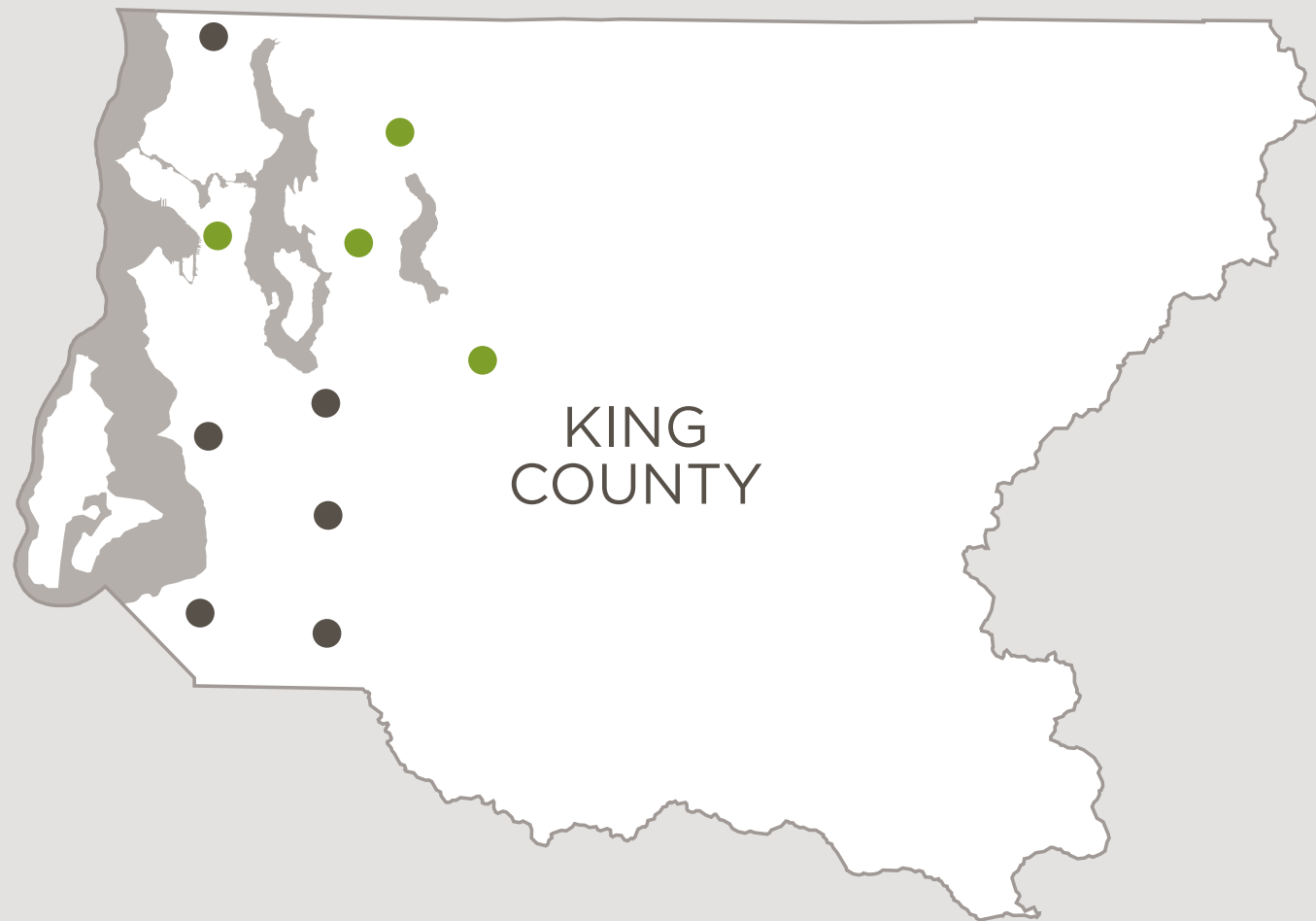
**UNEMPLOYMENT**  
2010-2012

**BY RACE**

■ LOWER UNEMPLOYMENT RATES  
-- KC AVERAGE: 8.2%  
■ HIGHER UNEMPLOYMENT RATES



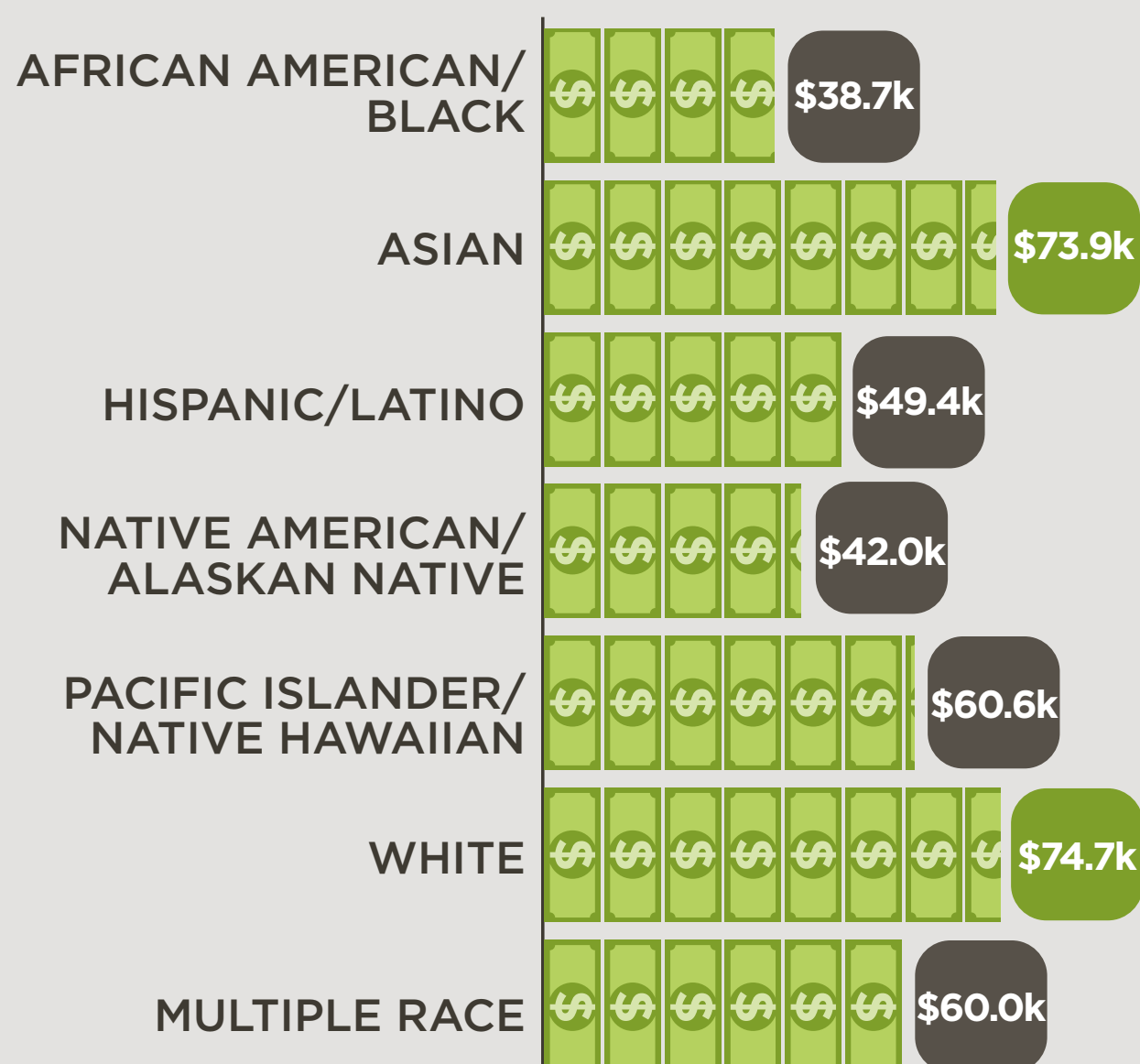
**BY PLACE**



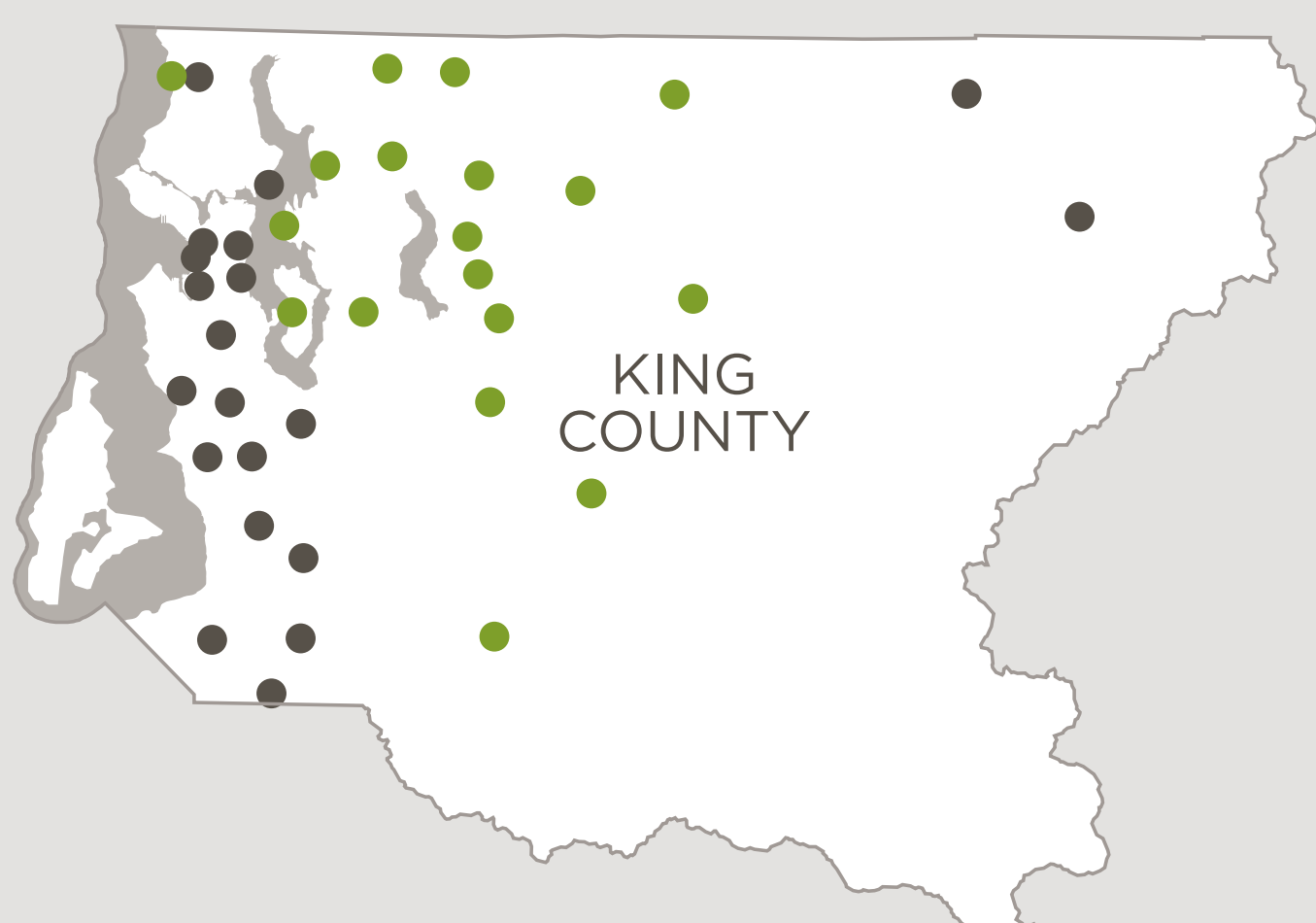
**INCOME**  
ANNUAL HOUSEHOLD INCOME

**BY RACE**

■ ABOVE KC AVERAGE  
-- KC AVERAGE: \$71,175  
■ BELOW KC AVERAGE



**BY PLACE**



THESE DIFFERENCES ARE PREVENTING MANY OF OUR RESIDENTS FROM REACHING THEIR FULL POTENTIAL.



**BUT WHEN YOU LOOK CLOSER, SIGNIFICANT PORTIONS OF OUR COMMUNITY ARE BEING LEFT BEHIND. (2 of 2)**



**HEALTH**

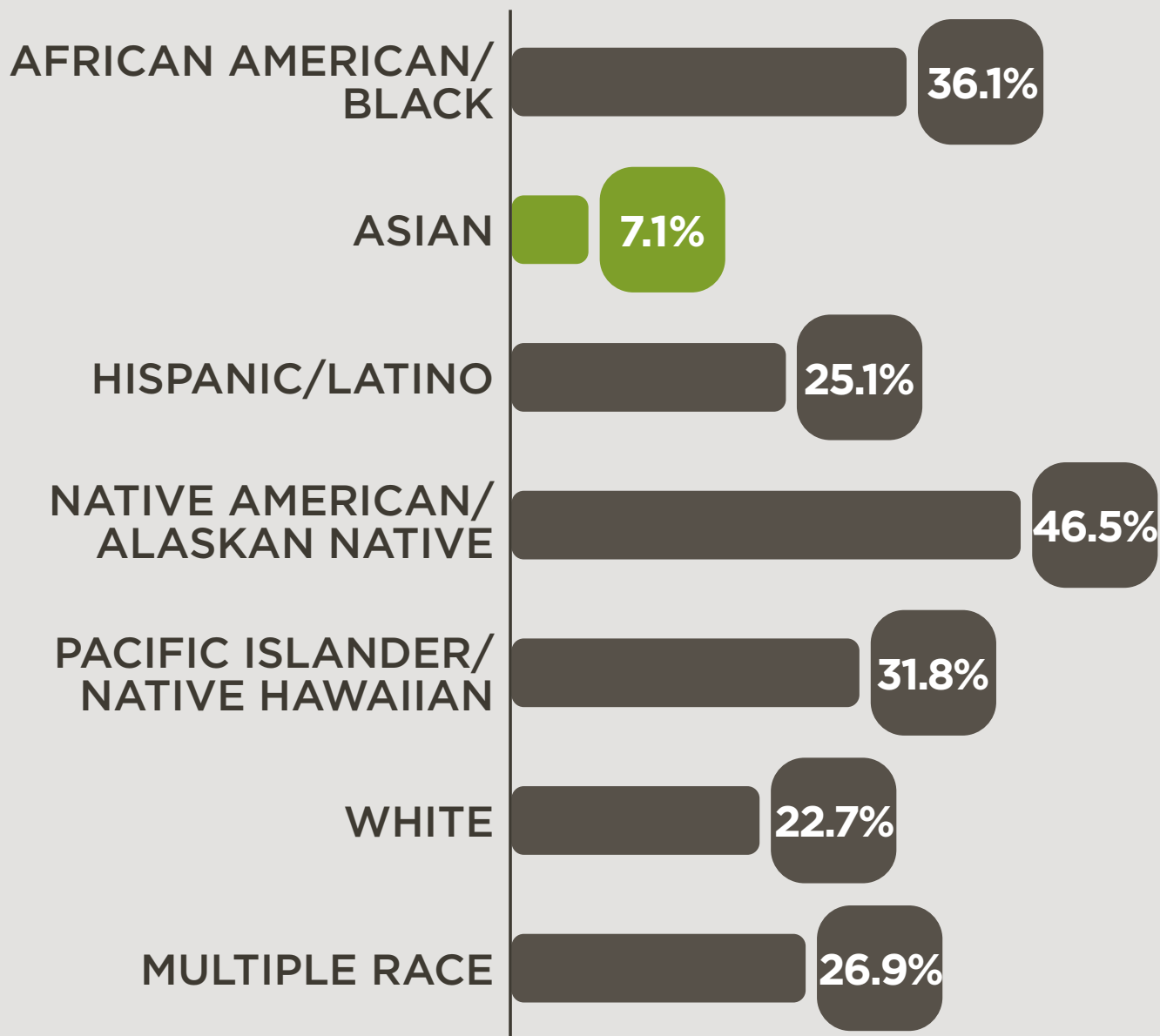
ADULT OBESITY (2008-2012)

**BY RACE**

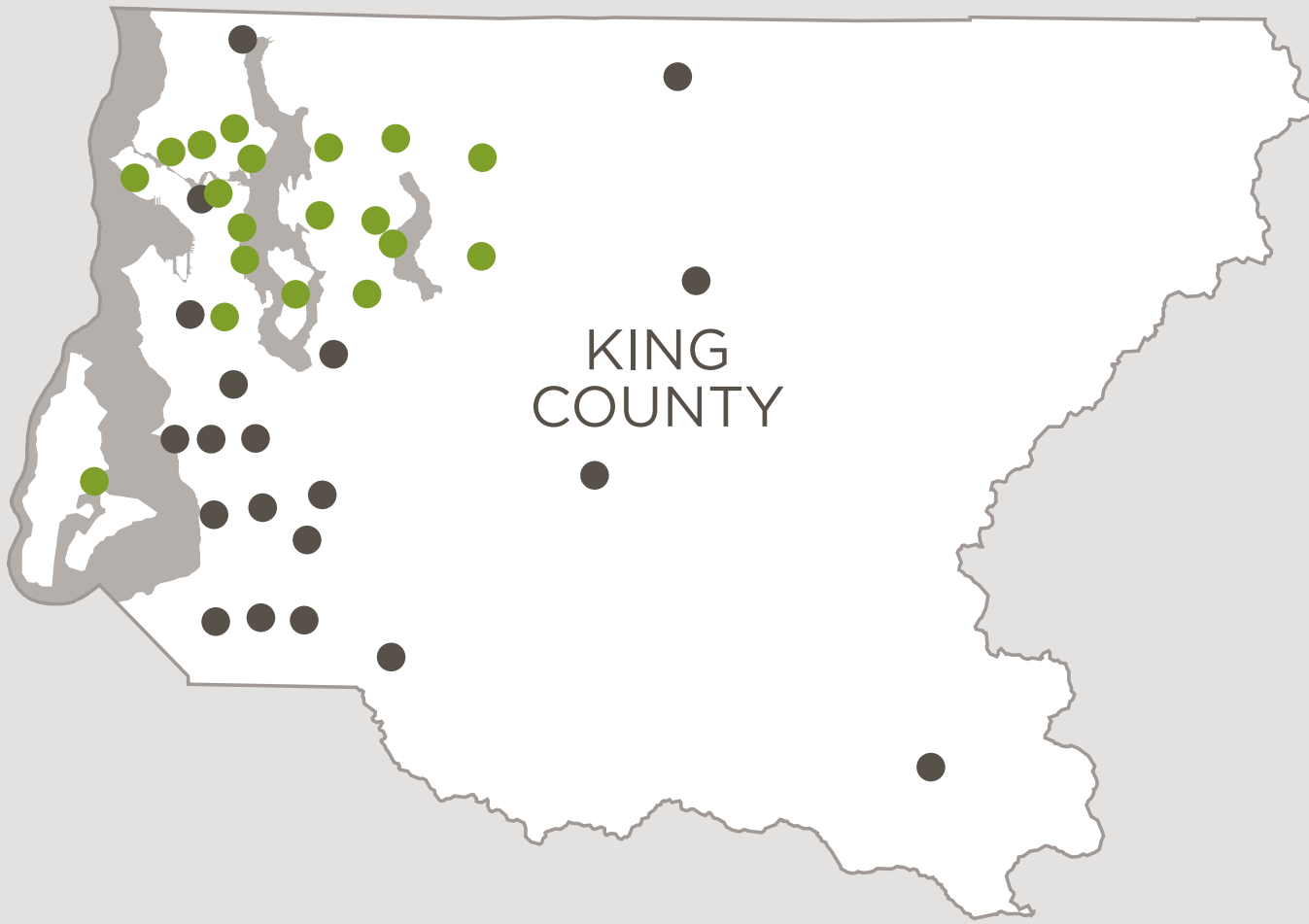
■ LOWER OBESITY RATES

— KC AVERAGE: 22.2%

■ HIGHER OBESITY RATES



**BY PLACE**



**HEALTH**

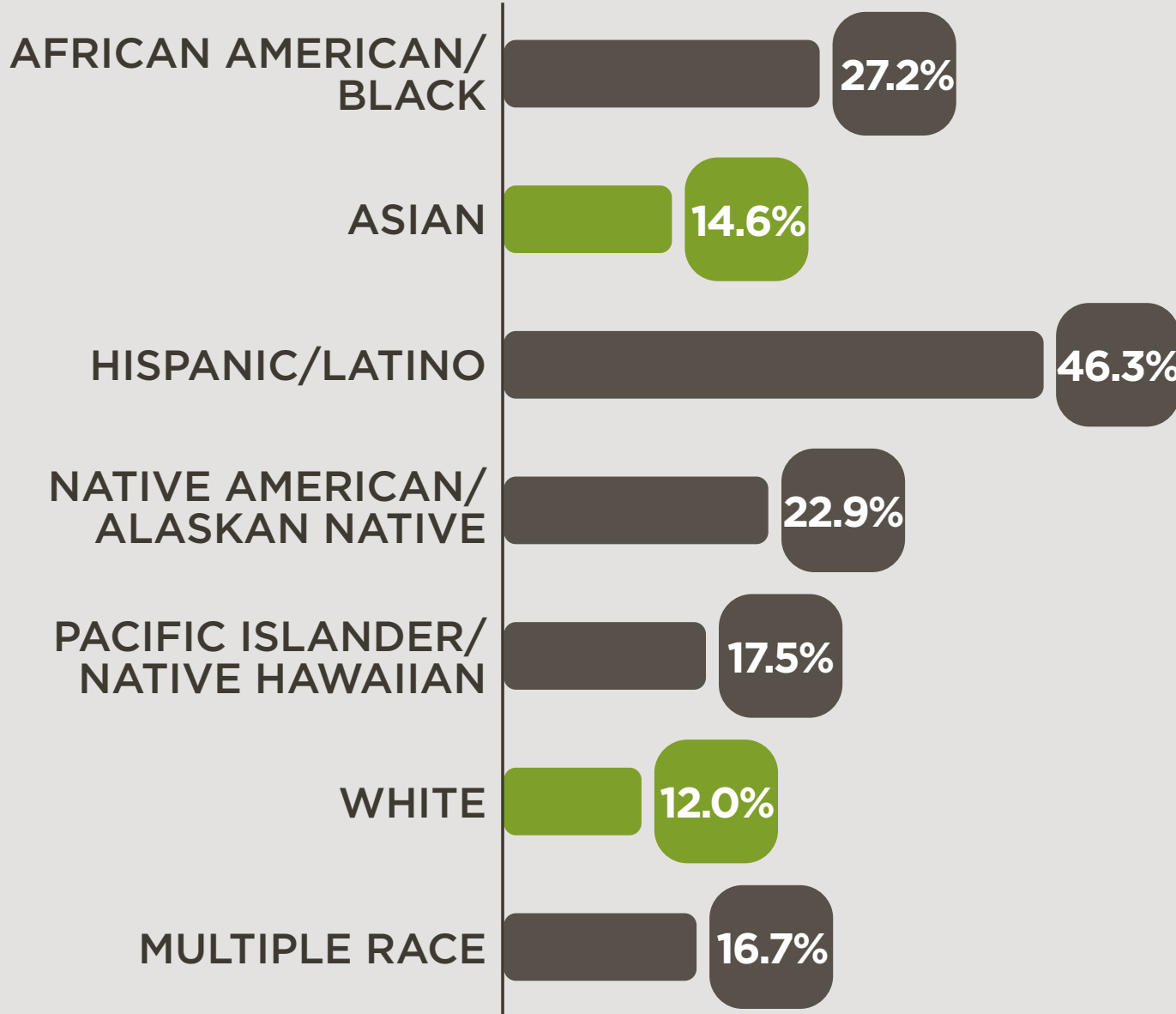
ADULTS WITHOUT HEALTH INSURANCE BEFORE AFFORDABLE CARE ACT ENROLLMENT (2011)

**BY RACE**

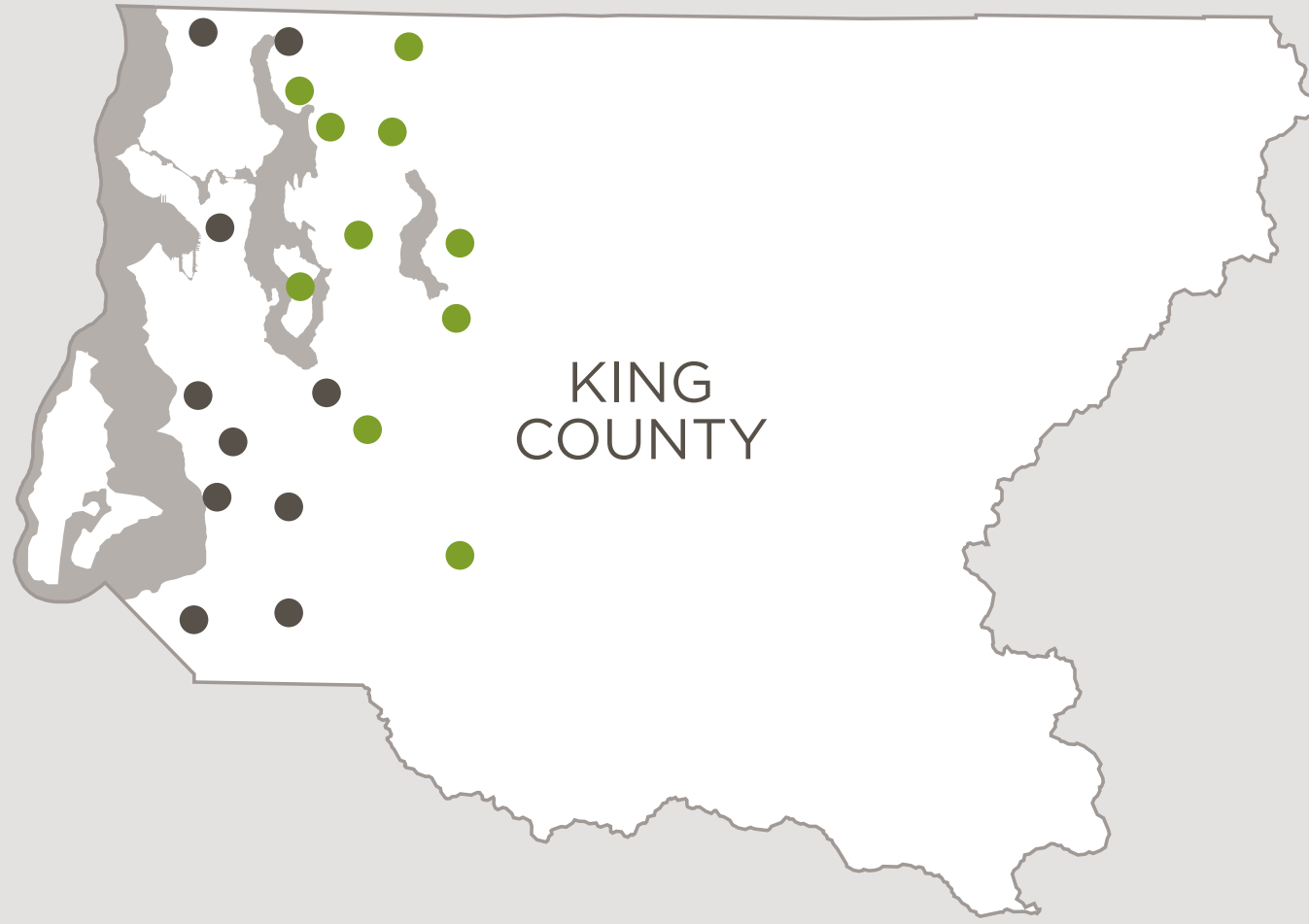
■ LOWER RATES OF UNINSURED ADULTS

— KC AVERAGE: 16.4%

■ HIGHER RATES OF UNINSURED ADULTS



**BY PLACE**



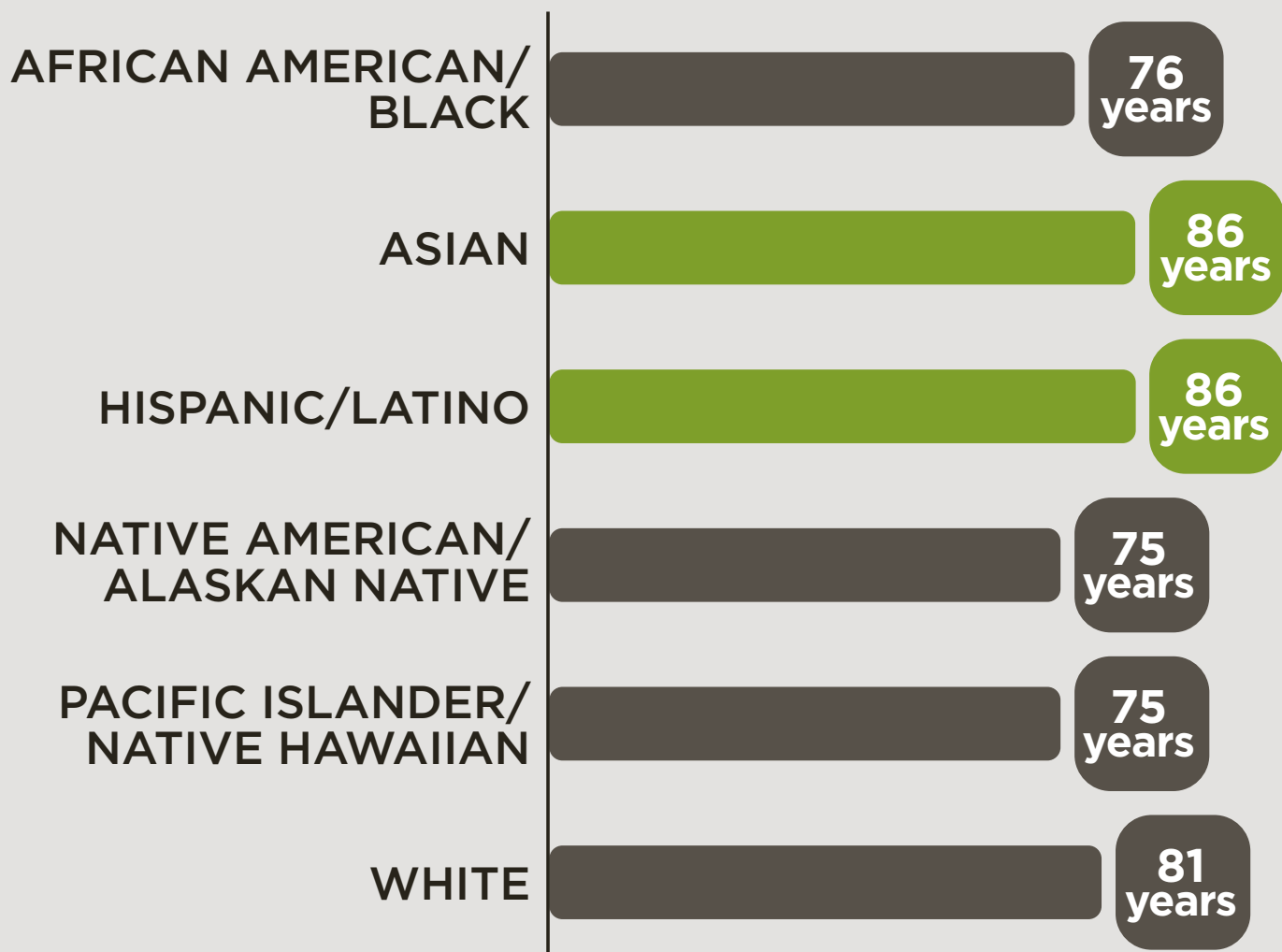
**LIFE EXPECTANCY**

**BY RACE**

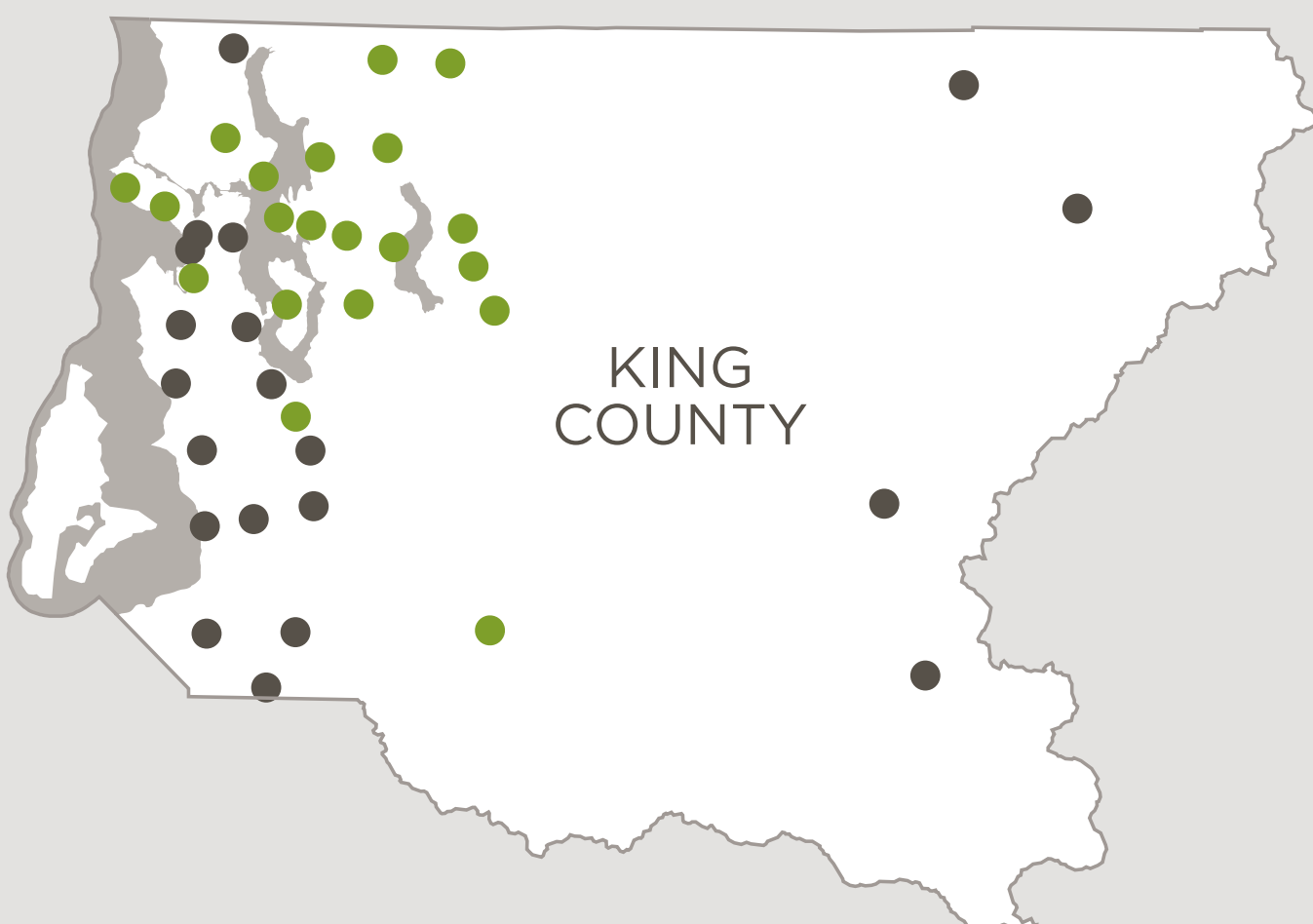
■ ABOVE KC AVERAGE

— KC AVERAGE: 81.4 YEARS

■ BELOW KC AVERAGE



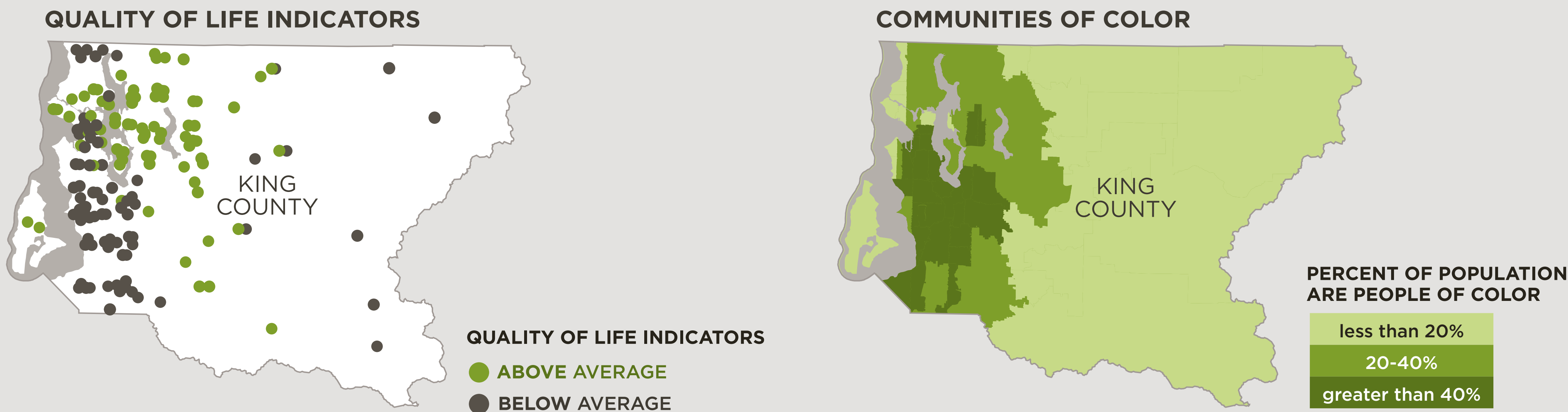
**BY PLACE**



THESE DIFFERENCES ARE PREVENTING MANY OF OUR RESIDENTS FROM REACHING THEIR FULL POTENTIAL.

RACE AND PLACE MATTER IN KING COUNTY.

RACE AND PLACE PREDICT WHETHER PEOPLE HAVE THE OPPORTUNITY TO THRIVE.



PEOPLE OF COLOR GENERALLY DO NOT EXPERIENCE THE SAME QUALITY OF LIFE AS WHITE RESIDENTS.

WHAT DO ALL RESIDENTS NEED TO REACH THEIR FULL POTENTIAL?

King County

14

DETERMINANTS OF EQUITY

THE CONDITIONS KING COUNTY HAS IDENTIFIED THAT EACH OF US NEED TO THRIVE

ACCESS TO AFFORDABLE, HEALTHY, LOCAL FOOD

COMMUNITY AND PUBLIC SAFETY

FAMILY WAGE JOBS AND JOB TRAINING

ACCESS TO HEALTH AND HUMAN SERVICES

EARLY CHILDHOOD DEVELOPMENT

HEALTHY BUILT AND NATURAL ENVIRONMENTS

ACCESS TO PARKS AND NATURAL RESOURCES

ECONOMIC DEVELOPMENT

QUALITY EDUCATION

ACCESS TO SAFE AND EFFICIENT TRANSPORTATION

EQUITABLE LAW AND JUSTICE SYSTEM

STRONG, VIBRANT NEIGHBORHOODS

AFFORDABLE, SAFE, QUALITY HOUSING

EQUITY IN COUNTY PRACTICES

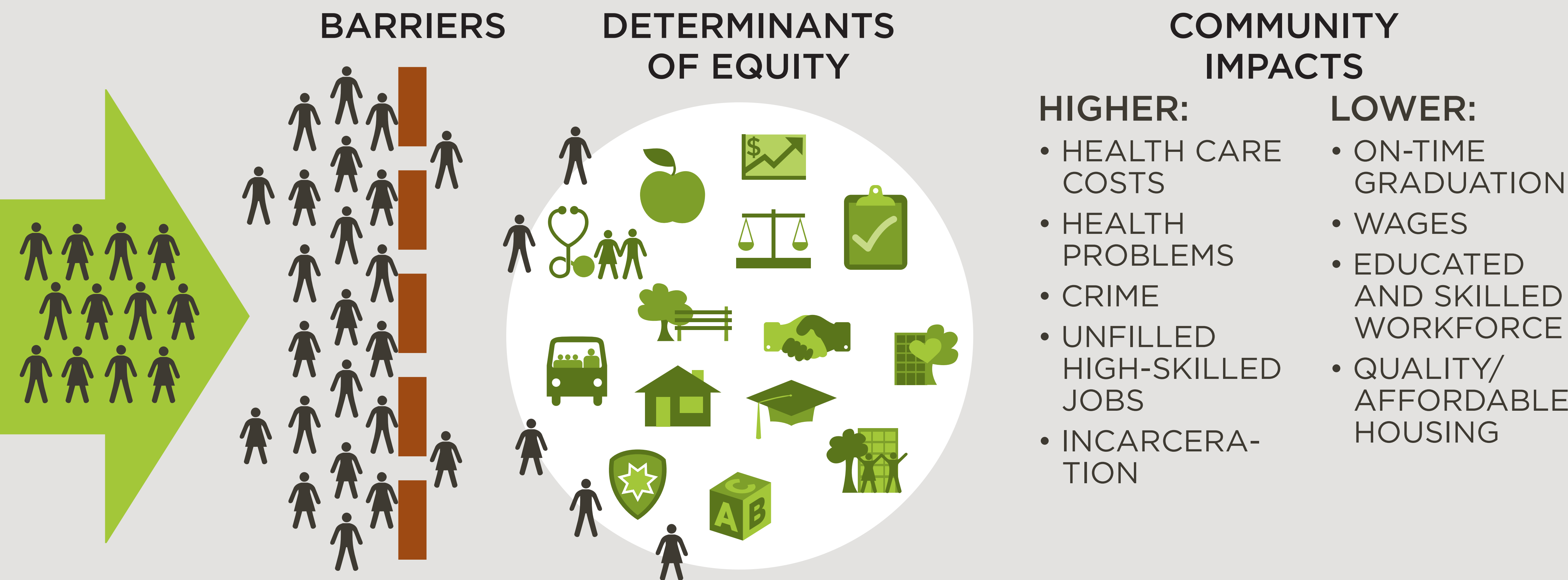


FLOURISHING COMMUNITIES ARE ROOTED IN THE DETERMINANTS OF EQUITY.



INEQUITIES HURT EVERYONE.

WHEN PEOPLE LACK ACCESS TO THE DETERMINANTS OF EQUITY, THEY LACK OPPORTUNITY. THE RESULTING INEQUITIES IMPACT THE WHOLE COMMUNITY.



KING COUNTY IS FOCUSING ON REMOVING BARRIERS AND INCREASING ACCESS, SO ALL PEOPLE HAVE THE OPPORTUNITY TO THRIVE.



WE ARE ALL BETTER OFF WHEN ALL OF US ARE BETTER OFF.



# WHAT IS KING COUNTY DOING TO BUILD EQUITY AND OPPORTUNITY?



## ACCESS TO HUMAN AND HEALTH SERVICES

### HEALTH INSURANCE

Coverage  
is **Here**  
King County

Every agency in King County government is helping people who are uninsured get enrolled in free or low-cost health insurance. Businesses, non-profits, schools and other partners have joined our Leadership Circle to help. 100,000 people enrolled!

### UP NEXT

If you are Medicaid-eligible, you can enroll anytime. But for others, open enrollment ends March 31st. Enroll yourself or get help for someone you know at [www.kingcounty.gov/coverage](http://www.kingcounty.gov/coverage).



## EARLY CHILDHOOD DEVELOPMENT & QUALITY EDUCATION

### READINESS TO LEARN

Through Nurse Family Partnership, Public Health nurses support young first time mothers to get their babies off to a good start.



### UP NEXT

Partnering with University of Washington and others to develop a regional vision of early childhood development and learning so kids start kindergarten ready to learn.

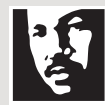
ABCDEFGHIJKLM  
NOPQRSTUVWXYZ



## ACCESS TO SAFE AND EFFICIENT TRANSPORTATION

### BUS SERVICE

Metro prioritizes transit service for low-income communities and communities of color when considering service changes.



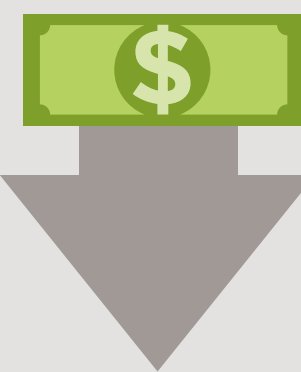
King County

**METRO**

We'll Get You There

### UP NEXT

Implementing a fare reduction for low-income people and working to save bus service from cuts.



## ACCESS TO AFFORDABLE, HEALTHY, LOCAL FOOD

### HEALTHY EATING

Childhood obesity rates declined by 17% following work with school districts to promote healthy eating and physical activity.

### UP NEXT

Improving access to local produce and eliminating food deserts through a new local food initiative.



## AFFORDABLE, SAFE QUALITY HOUSING

### YOUTH AND YOUNG ADULT HOMELESSNESS

Partnered with Raikes Foundation and others on nationally-recognized actions that are reducing youth homelessness through prevention and stable housing placement. Seventy youths were housed last year.

### UP NEXT

Partner with PRIDE Foundation and others to reduce homelessness among LGBTQ youth and foster youth.



## ACCESS TO PARKS AND NATURAL RESOURCES

### PARKS & TRAILS

In White Center, built a new technology center for youth, community garden, picnic shelter and play area.

King County Parks

**Your  
Big  
Backyard**

### UP NEXT

Implement the voter-approved parks levy, which includes funding for the Lake to Sound Trail in South King County.



THESE ARE JUST A FEW EXAMPLES OF OUR WORK. TO LEARN MORE PLEASE READ OUR 2013 EQUITY AND SOCIAL JUSTICE ANNUAL REPORT.

## KING COUNTY CAN'T BUILD EQUITY ALONE. GET INVOLVED!

### TAKE ACTION

Consider how organizations you are affiliated with can promote access to opportunity and equity.

- Equity tools and resources can be found on the King County Equity & Social Justice website.
- Check out the Race & Social Justice Community Roundtable Racial Equity Tool.

### GET INFORMED

Visit our King County Equity & Social Justice website

[www.kingcounty.gov/equity](http://www.kingcounty.gov/equity) and read our latest Annual Report.

### CHALLENGE YOUR OWN BIASES

Visit Harvard's Project Implicit - <https://implicit.harvard.edu/implicit/>

### JOIN THE NETWORK

See how community organizations, philanthropy and local governments are addressing equity.

- Visit the Regional Equity Network - <http://pugetsoundequity.org>

To learn more about the King County Executive's Commitment to Building Equity and Opportunity go to:  
[kingcounty.gov/exec/buildingequity](http://kingcounty.gov/exec/buildingequity)

For detailed source information go to:  
[kingcounty.gov/exec/buildingequity/sources](http://kingcounty.gov/exec/buildingequity/sources)