

Familiar Faces Value Stream v.3.5 DRAFT

Legend

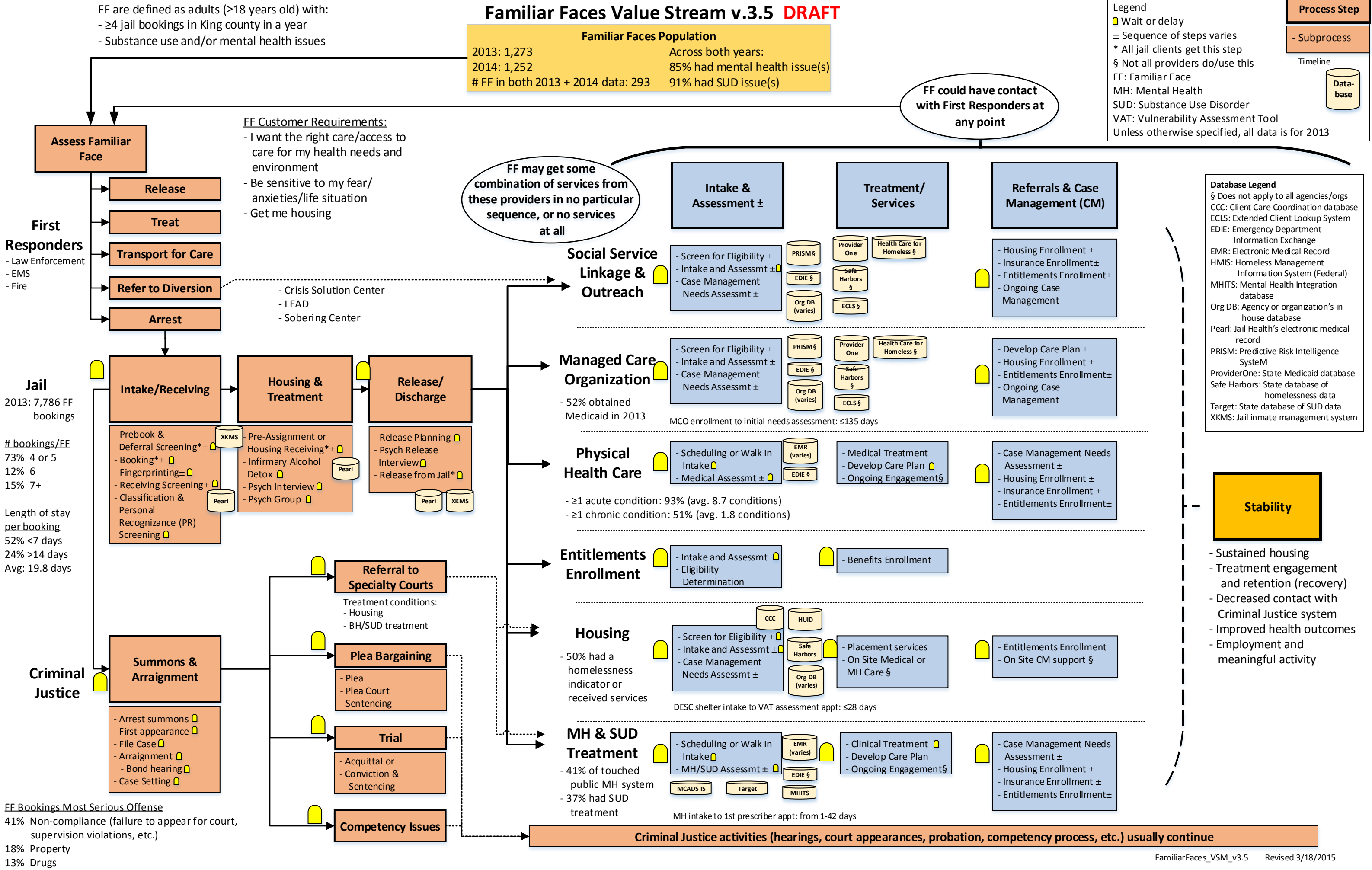
- Wait or delay
- ± Sequence of steps varies
- \* All jail clients get this step
- § Not all providers do/use this
- FF: Familiar Face
- MH: Mental Health
- SUD: Substance Use Disorder
- VAT: Vulnerability Assessment Tool
- Unless otherwise specified, all data is for 2013

Process Step

- Subprocess

Timeline

Database



**Legend** \*Part of FF Value Stream activities

ACH: Accountable Communities of Health

KC: King County

EMS: Emergency Medical Responders (First Responders)

DAJD: Dept. of Adult & Juvenile Detention

DPH: Dept. of Public Health

DCHS: Dept. of Community and Human Services

DSHS: Washington State Dept. of Social & Health Services

RSN: Regional Support Networks

Defined as adults (≥18 years old) with:

- ≥4 jail bookings in King county in a year
- Substance abuse and/or mental health issues

## Social Service Linkage & Outreach

- ## Managed Care Organization

- Physical  
Health Care  
Provider**

- ## Entitlements Enrollment

- ## Housing

- ## MH & SUD Treatment

- Sound Mental Health\*
- Community Psychiatric clinic (CPC)
- Pioneer Human Services\*
- Evergreen Treatment Services\* REACH and LEAD
- KC DPH Mobile Medical Van\*
- Downtown Emergency Service Center (DESC)\*

- Downtown Emergency Service Center (DESC)\*
- Evergreen Treatment Services\*
- Sobering Center/Detox
- State contracted in patient SUD treatment providers

- City of Seattle Multi-Disciplinary Team (MDT)
- KC Mental Illness & Drug Dependency Action Plan (MIDD)
- KC Veterans & Human Services Levy
- KC Communities of Opportunity
- KC Accountable Communities of Health (ACH)

- KC Accountable Communities of Health (ACH)

- Health Care for the Homeless
- KC Communities of Opportunity
- KC Recidivism Reduction & Re-entry Strategic Planning
- KC Accountable Communities of Health (ACH)

- Communities of Opportunity
- Committee to End Homelessness (CEH)
  - Plan to End Veterans' Homelessness
  - Coordinated Entry & Assessment Alignment for all populations (youth/young adults, adults, families)
- Criminal Justice Initiatives (NOW Diversion & Reentry)
- Veterans Justice Initiative
- 25 Cities
- Medicaid Supportive Human Service Benefit
- DCHS Housing Line of Business (LOB)

- ACH Behavioral Health Integration (BHI)
- KC Health & Human Services (HHS) Transformation Plan
- Washington State SIM (State Innovation Model) Grant
- Psychiatric Boarding Task Force