

# RAGING RIVER QUARRY

## GRADING PERMIT #GRDE15-0004

### KING COUNTY, WASHINGTON

#### GENERAL NOTES

- ALL CONSTRUCTION SHALL BE IN ACCORDANCE WITH PERMIT CONDITIONS, THE KING COUNTY CODE (KCC), KING COUNTY ROAD STANDARDS (KORS), WASHINGTON STATE DOT (WSDOT) STANDARD SPECIFICATIONS AND THE CONDITIONS OF THE PERMIT APPROVAL. IT SHALL BE THE SOLE RESPONSIBILITY OF THE APPLICANT AND THE PROFESSIONAL CIVIL ENGINEER TO CORRECT ANY ERROR, OMISSION, OR VARIATION FROM THE ABOVE REQUIREMENTS FOUND IN THESE PLANS. ALL CORRECTIONS SHALL BE AT NO ADDITIONAL COST OR LIABILITY TO KING COUNTY.
- THE DESIGN ELEMENTS WITHIN THESE PLANS HAVE BEEN REVIEWED ACCORDING TO THE KING COUNTY DEPARTMENT OF DEVELOPMENT AND ENVIRONMENTAL SERVICES (DDES) ENGINEERING REVIEW CHECKLIST. SOME ELEMENTS MAY HAVE BEEN OVERLOOKED OR MISSED BY THE DDES PLAN REVIEWER. ANY VARIANCE FROM ADOPTED STANDARDS IS NOT ALLOWED UNLESS SPECIFICALLY APPROVED BY KING COUNTY PRIOR TO CONSTRUCTION.
- APPROVAL OF THIS EXTENSION OF GRADING AND DRAINAGE PLAN DOES NOT CONSTITUTE AN APPROVAL OF ANY OTHER CONSTRUCTION (E.G. DOMESTIC WATER CONVEYANCE, SEWER CONVEYANCE, GAS ELECTRICAL, ETC.)
- BEFORE ANY CONSTRUCTION OR DEVELOPMENT ACTIVITY, A PRECONSTRUCTION MEETING WAS HELD BETWEEN KING COUNTY, THE APPLICANT, AND THE APPLICANT'S CONSTRUCTION REPRESENTATIVE.
- A COPY OF THESE APPROVED PLANS MUST BE ON THE JOB SITE WHENEVER CONSTRUCTION IS IN PROGRESS.
- HOURS OF OPERATION SHALL BE LIMITED TO 7A.M. TO 7P.M. MONDAY THROUGH FRIDAY, EXCEPT THAT LOADING OF TRUCKS SHALL ME LIMITED TO 7:30A.M. TO 4:30P.M. SATURDAY HOURS ARE LIMITED TO 7:30A.M. TO 4:30P.M. FOR MAINTENANCE ONLY.
- IT SHALL BE THE APPLICANT'S/CONTRACTOR'S RESPONSIBILITY TO OBTAIN ALL CONSTRUCTION EASEMENTS NECESSARY BEFORE INITIATING ANY OFF-SITE WORK. EASEMENTS REQUIRE REVIEW AND APPROVAL PRIOR TO CONSTRUCTION.
- FRANCHISED UTILITIES OR OTHER INSTALLATIONS THAT ARE NOT SHOWN ON THESE APPROVED PLANS SHALL NOT BE CONSTRUCTED UNLESS AN APPROVED SET OF PLANS THAT MEET ALL REQUIREMENTS OF KCRS CHAPTER 8 ARE SUBMITTED TO THE DDES'S LAND USE INSPECTION SECTION THREE DAYS PRIOR TO CONSTRUCTION.
- DATUM SHALL BE KCAS UNLESS OTHERWISE APPROVED BY DDES.
- THE CONTRACTOR SHALL BE RESPONSIBLE FOR PROVIDING ADEQUATE SAFEGUARDS, SAFETY DEVICES, PROTECTIVE EQUIPMENT, FLAGGERS, AND ANY OTHER NEEDED ACTIONS TO PROTECT THE LIFE, HEALTH, AND SAFETY OF THE PUBLIC, AND TO PROTECT PROPERTY IN CONNECTION WITH THE PERFORMANCE OF WORK COVERED BY THE CONTRACTOR. ANY WORK WITHIN THE TRAVELED RIGHT-OF-WAY THAT MAY INTERRUPT NORMAL TRAFFIC FLOW SHALL REQUIRE AT LEAST ONE FLAGGER FOR EACH LANE OF TRAFFIC AFFECTED. MANUAL OR UNION TRAFFIC CONTROL DEVICES (MUTCQ) SHALL APPLY. WORK IN RIGHT-OF-WAY IS NOT AUTHORIZED UNTIL A TRAFFIC CONTROL PLAN IS APPROVED BY KING COUNTY.

#### EROSION AND SEDIMENT CONTROL NOTES

- APPROVAL OF THIS EROSION AND SEDIMENTATION CONTROL (ESC) PLAN DOES NOT CONSTITUTE AN APPROVAL OF PERMANENT ROAD OR DRAINAGE DESIGN (E.G. SIZE AND LOCATION OF ROADS, PIPES, RESTRICTORS, CHANNELS, RETENTION FACILITIES, UTILITIES, ETC.)
- THE IMPLEMENTATION OF THESE ESC PLANS AND THE CONSTRUCTION, MAINTENANCE, REPLACEMENT, AND UPGRADING OF THESE ESC FACILITIES IS THE RESPONSIBILITY OF THE APPLICANT/ESC SUPERVISOR UNTIL ALL CONSTRUCTION IS APPROVED.
- THE BOUNDARIES OF THE CLEARING LIMITS SHOWN ON THIS PLAN SHALL BE CLEARLY FLAGGED OR STAKED DURING CONSTRUCTION. DURING THE CONSTRUCTION PERIOD, NO DISTURBANCE BEYOND THE CLEARING LIMITS SHALL BE PERMITTED. THE CLEARING LIMITS SHALL BE MAINTAINED BY THE APPLICANT/ESC SUPERVISOR FOR THE DURATION OF CONSTRUCTION.
- STABILIZED CONSTRUCTION ENTRANCES (PAVED ROADWAY) SHALL BE INSTALLED AT THE BEGINNING OF CONSTRUCTION AND MAINTAINED FOR THE DURATION OF THE PROJECT. ADDITIONAL MEASURES, SUCH AS CONSTRUCTED WHEEL WASH SYSTEMS OR WASH PADS, MAY BE REQUIRED TO ENSURE THAT ALL PAVED AREAS ARE KEPT CLEAN AND TRACK OUT TO ROAD RIGHT OF WAY DOES NOT OCCUR FOR THE DURATION OF THE PROJECT.
- THE ESC FACILITIES SHOWN ON THIS PLAN MUST BE CONSTRUCTED PRIOR TO OR IN CONJUNCTION WITH ALL CLEARING AND GRADING SO AS TO ENSURE THAT THE TRANSPORT OF SEDIMENT TO SURFACE WATERS, DRAINAGE SYSTEMS, AND ADJACENT PROPERTIES IS MINIMIZED.
- THE ESC FACILITIES SHOWN ON THIS PLAN ARE THE MINIMUM REQUIREMENTS FOR ANTICIPATED SITE CONDITIONS. DURING THE CONSTRUCTION PERIOD, THESE ESC FACILITIES SHALL BE UPGRADED AS NEEDED FOR UNEXPECTED STORM EVENTS AND MODIFIED TO ACCOUNT FOR CHANGING SITE CONDITIONS (E.G., ADDITIONAL COVER MEASURES, ADDITIONAL SUMP PUMPS, RELOCATION OF DITCHES AND SILT FENCES, PERIMETER PROTECTION ETC.).
- THE ESC FACILITIES SHALL BE INSPECTED DAILY BY THE APPLICANT/ESC SUPERVISOR AND MAINTAINED TO ENSURE CONTINUED PROPER FUNCTIONING. WRITTEN RECORDS SHALL BE KEPT OF WEEKLY REVIEWS OF THE ESC FACILITIES.
- ANY AREA NEEDING ESC MEASURES NOT REQUIRING IMMEDIATE ATTENTION SHALL BE ADDRESSED WITHIN SEVEN (7) DAYS.
- THE ESC FACILITIES ON INACTIVE SITES SHALL BE INSPECTED AND MAINTAINED A MINIMUM OF ONCE A MONTH OR WITHIN TWENTY-FOUR (24) HOURS FOLLOWING A STORM EVENT.
- COVER MEASURES WILL BE APPLIED IN CONFORMANCE WITH APPENDIX D OF THE SURFACE WATER DESIGN MANUAL.
- PRIOR TO THE BEGINNING OF THE WET SEASON (OCT. 1), ALL DISTURBED AREAS SHALL BE REVIEWED TO IDENTIFY WHICH ONES CAN BE SEEDED IN PREPARATION FOR THE RECLAMATION AND/OR WINTER RAINS. AREAS SHALL BE SEEDED WITHIN ONE WEEK OF THE BEGINNING OF THE WET SEASON. A SKETCH MAP OF THOSE AREAS TO BE SEEDED AND THOSE AREAS TO REMAIN UNCOVERED SHALL BE SUBMITTED TO THE DDES FOR REVIEW.

#### CONSTRUCTION SEQUENCE

- PRE-CONSTRUCTION MEETING HAS ALREADY OCCURRED.
- POST NOTICE OF CONSTRUCTION ACTIVITY SIGN WITH NAME AND PHONE NUMBER OF ESC SUPERVISOR.
- FLAG OR STAKE CLEARING LIMITS.
- SWEEP AND MAINTAIN CONSTRUCTION ENTRANCE.
- MAINTAIN INFILTRATION PONDS AND ESC PROTECTION.
- CLEAN AND RESTORE EXISTING ESC MEASURES (SEDIMENT PONDS, DITCHES, ETC.)
- GRADE AND STABILIZE CONSTRUCTION ROADS.
- CONSTRUCT SURFACE WATER CONTROLS (INTERCEPTOR DIKES, PIPE SLOPE DRAINS, ETC.) SIMULTANEOUSLY WITH CLEARING AND GRADING FOR PROJECT DEVELOPMENT.
- MAINTAIN EROSION CONTROL MEASURES IN ACCORDANCE WITH KING COUNTY STANDARDS AND MANUFACTURER'S RECOMMENDATIONS.
- RELOCATE SURFACE WATER CONTROLS AND EROSION CONTROL MEASURES OR INSTALL NEW MEASURES SO THAT AS SITE CONDITIONS CHANGE THE EROSION AND SEDIMENT CONTROL IS ALWAYS IN ACCORDANCE WITH THE KING COUNTY EROSION AND SEDIMENT CONTROL STANDARDS.
- UPON COMPLETION OF THE PROJECT, ALL DISTURBED AREAS MUST BE STABILIZED AND BEST MANAGEMENT PRACTICES REMOVED, IF APPLICABLE.

#### LEGAL DESCRIPTION OF PROPERTY INCLUDED IN CURRENT APPROVED GRADING PERMIT

THE SOUTHEAST QUARTER OF THE NORTHWEST QUARTER OF THE SOUTHWEST QUARTER OF SECTION 22, TOWNSHIP 24 NORTH, RANGE 7 EAST, W.M.; EXCEPT THAT PORTION CONVEYED TO KING COUNTY FOR HIGHWAY PURPOSES BY DEED RECORDED UNDER AUDITOR'S FILE NO. 2830807, RECORDS OF SAID COUNTY.

ALSO THAT PORTION OF THE SOUTH HALF OF THE SOUTHWEST QUARTER OF SECTION 22, TOWNSHIP 24 NORTH, RANGE 7 EAST, W.M., LYING WEST OF RAGING RIVER; EXCEPT RIGHT OF WAY, AND ALSO EXCEPT PORTION SOUTH OF THE FOLLOWING LINE:

BEGINNING 331.05 FEET SOUTH OF THE NORTHWEST CORNER OF SAID SOUTH HALF OF THE SOUTHWEST QUARTER; THENCE NORTH 77°06' EAST 1,334.70 FEET TO THE EAST LINE OF THE SOUTHWEST QUARTER OF THE SOUTHWEST QUARTER, 75 FEET SOUTH OF THE NORTHEAST CORNER THEREOF; THENCE EAST 150 FEET, MORE OR LESS, TO CENTER OF RAGING RIVER. LESS COUNTY ROAD.

#### LEGAL DESCRIPTION OF ENTIRE PROPERTY

PARCEL A:  
LOT 4 OF KING COUNTY SHORT PLAT NUMBER 880098, RECORDED UNDER RECORDING NUMBER 8202050393, IN KING COUNTY, WASHINGTON.

PARCEL B:  
THE SOUTHEAST QUARTER OF THE NORTHWEST QUARTER OF THE SOUTHWEST QUARTER OF SECTION 22, TOWNSHIP 24 NORTH, RANGE 7 EAST, WILLAMETTE MERIDIAN, IN KING COUNTY, WASHINGTON; EXCEPT THAT PORTION CONVEYED TO KING COUNTY FOR HIGHWAY PURPOSES BY DEED RECORDED UNDER RECORDING NUMBER 2830807;

ALSO THAT PORTION OF THE SOUTH HALF OF THE SOUTHWEST QUARTER OF SECTION 22, TOWNSHIP 24 NORTH, RANGE 7 EAST, WILLAMETTE MERIDIAN, IN KING COUNTY, WASHINGTON, LYING WEST OF RAGING RIVER; EXCEPT RIGHT OF WAY FOR A. R. CARMICHAEL ROAD; EXCEPT PORTION SOUTH OF THE FOLLOWING LINE:

BEGINNING 331.05 FEET SOUTH OF THE NORTHWEST CORNER OF SAID SOUTH HALF OF THE SOUTHWEST QUARTER; THENCE NORTH 77°06' EAST 1,334.70 FEET TO THE EAST LINE OF THE SOUTHWEST QUARTER OF THE SOUTHWEST QUARTER, 75 FEET SOUTH OF THE NORTHEAST CORNER THEREOF; THENCE EAST 150 FEET, MORE OR LESS, TO CENTER OF RAGING RIVER; EXCEPT COUNTY ROAD.

ALSO THAT PORTION OF THE NORTHWEST QUARTER OF THE SOUTHWEST QUARTER OF SECTION 22, TOWNSHIP 24 NORTH, RANGE 7 EAST, WILLAMETTE MERIDIAN, IN KING COUNTY, WASHINGTON, DESCRIBED AS FOLLOWS:

BEGINNING AT THE NORTHEAST CORNER OF THE SOUTHWEST QUARTER OF THE NORTHWEST QUARTER OF THE SOUTHWEST QUARTER OF SECTION 22, TOWNSHIP 24 NORTH, RANGE 7 EAST, WILLAMETTE MERIDIAN, IN KING COUNTY, WASHINGTON, SAID POINT BEING THE TRUE POINT OF BEGINNING; THENCE ALONG THE EAST LINE OF SAID SOUTHWEST QUARTER OF THE NORTHWEST QUARTER OF THE SOUTHWEST QUARTER SOUTH 00°53'02" WEST 680.99; THENCE ALONG THE SOUTH LINE OF SAID SOUTHWEST QUARTER OF THE NORTHWEST QUARTER OF THE SOUTHWEST QUARTER SOUTH 89°46'17" WEST 594.53 FEET; THENCE NORTH 42°22'27" EAST APPROXIMATELY 897.83 FEET TO THE TRUE POINT OF BEGINNING (BEING A PORTION OF LOT B OF LOT LINE ADJUSTMENT NUMBER 582025).

#### DATUM

MEAN SEA LEVEL, AS UTILIZED IN THE U.S. DEPT. OF INTERIOR GEOLOGICAL SURVEY – FALL CITY QUADRANGLE MAP.

#### BASIS OF BEARINGS

N00°48'50"E BETWEEN THE MONUMENTS FOUND IN PLACE AT THE WEST QUARTER CORNER AND THE SOUTHWEST CORNER OF SEC. 22, TWP. 24 N., RGE. 7 E., W.M. PER REFERENCE 1.

#### BENCHMARK

SPOT ELEVATION AT THE INTERSECTION OF THE PRESTON–FALL CITY ROAD AND CARMICHAEL ROAD. ELEVATION= 198.697

#### TAX PARCEL NUMBERS

222407–9011 & 222407–9035

#### SITE ADDRESS

32715 WILLIAM CARMICHAEL ROAD  
FALL CITY, WA 98004

#### OWNER/APPLICANT

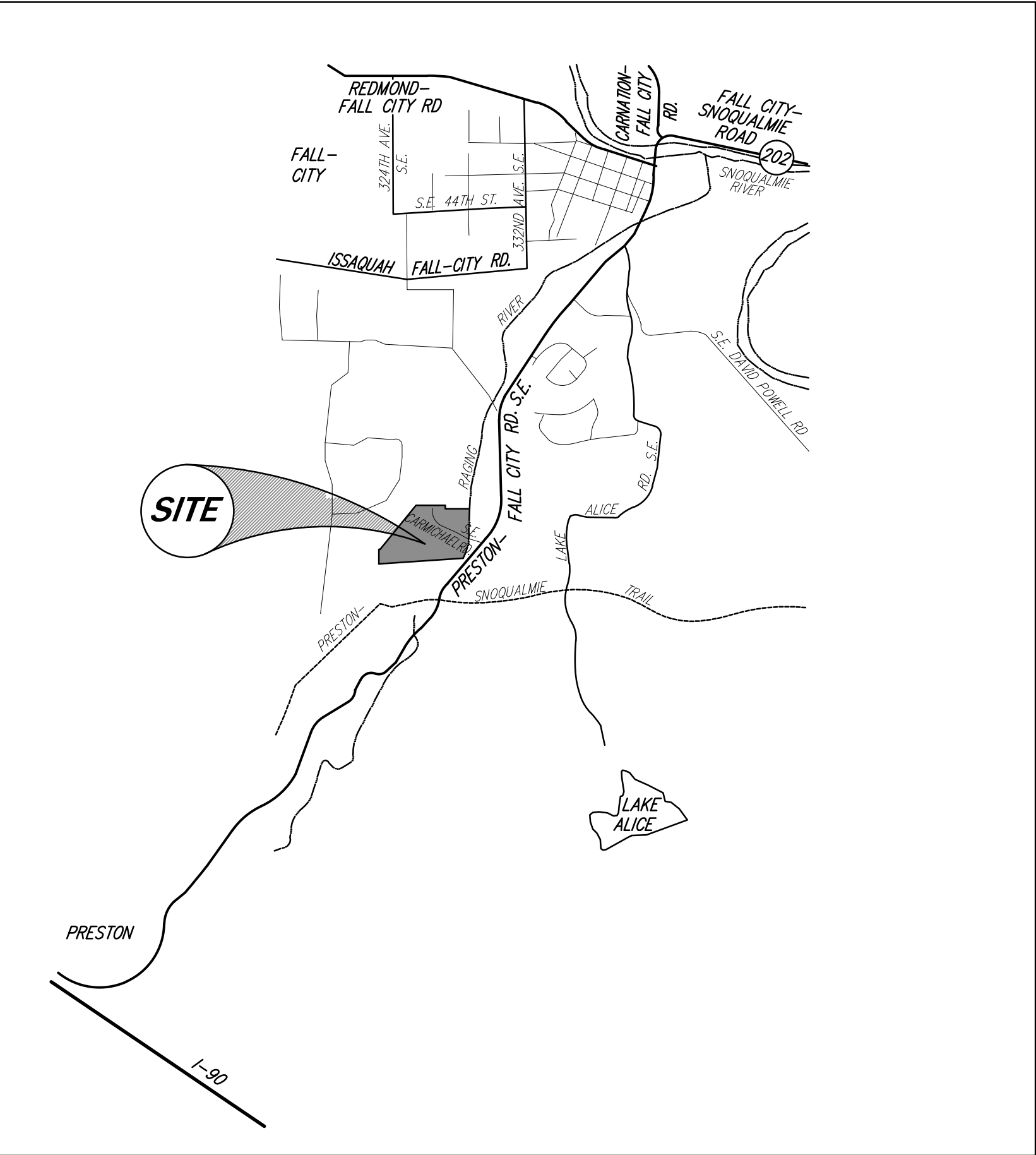
RAGING RIVER QUARRY, LLC  
3132 NE HARRISON STREET  
ISSAQUAH, WA 98029  
(425) 445-1189  
CONTACT: JOHN PRIEBE

#### ENGINEER/SURVEYOR

CORE DESIGN INC.  
14711 N.E. 29TH PLACE, SUITE 101  
BELLEVUE, WASHINGTON 98007  
(425) 885-7877  
CONTACT: KEVIN VANDERZANDEN, P.L.S. – SURVEYOR  
STACIA BLOOM, P.E. – ENGINEER



#### SHEET INDEX

C1.01 COVER SHEET  
C1.02 EXISTING CONDITION  
C2.01 EROSION CONTROL PLAN  
C3.01 EXCAVATION PLAN  
C3.02 RECLAMATION PLAN  
C3.31 EXISTING PERMIT CONDITIONS



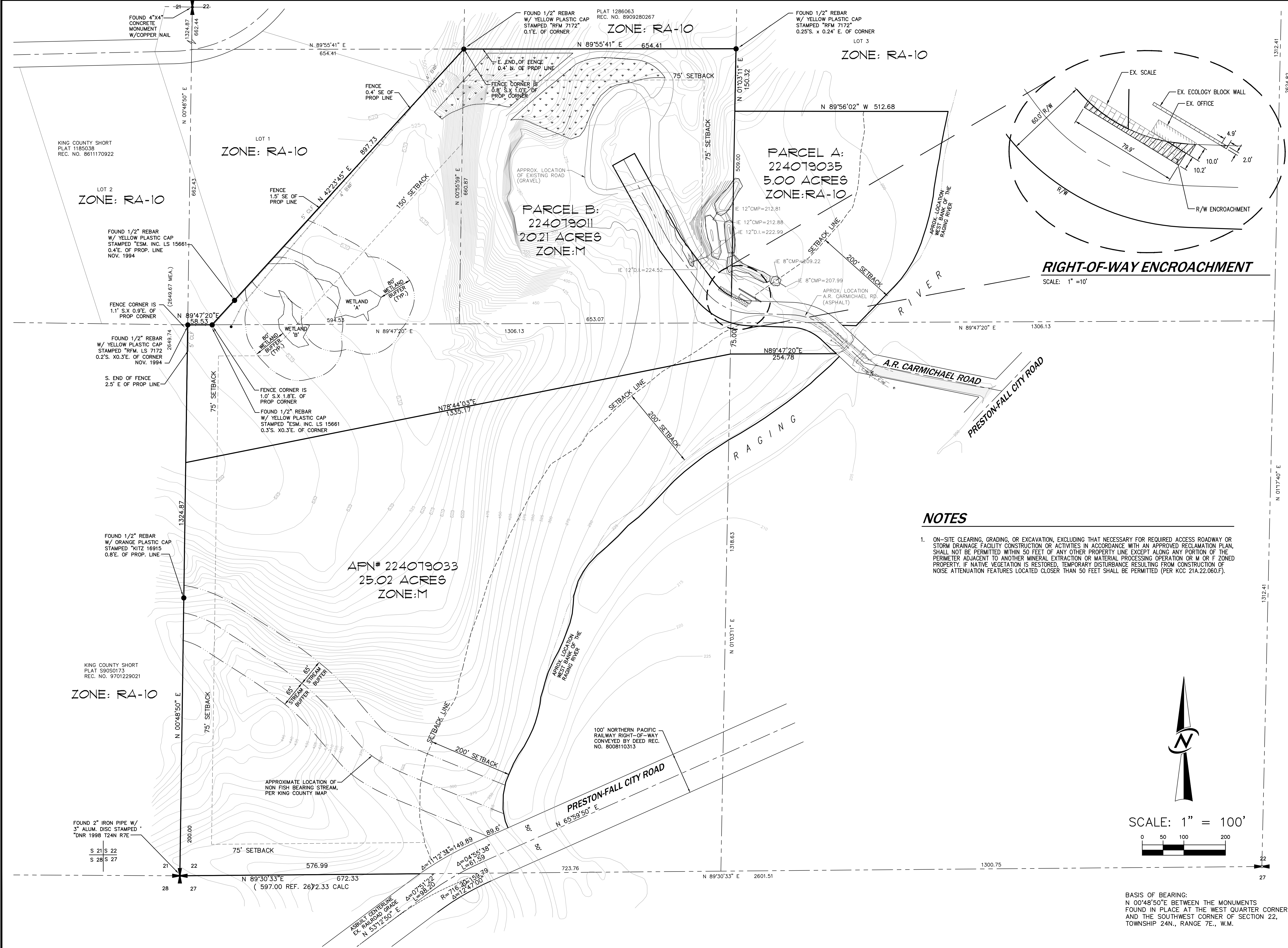
#### VICINITY MAP

NO SCALE

| REVISIONS                                                                                                   |                                        | DATE                          |
|-------------------------------------------------------------------------------------------------------------|----------------------------------------|-------------------------------|
| 1                                                                                                           | COUNTY COMMENTS, REVISIONS TO PLAN SET | 9/2/16                        |
| 2                                                                                                           | COUNTY COMMENTS, REVISIONS TO PLAN SET | 12/14/17                      |
| NO                                                                                                          |                                        |                               |
|                          |                                        |                               |
| 14711 NE 29th Place Suite 101<br>Bellevue, Washington 98007<br>425-885-7877 Fax 425-885-7963                |                                        |                               |
|                         |                                        |                               |
| COVER SHEET<br>RAGING RIVER QUARRY<br>RAGING RIVER QUARRY, LLC<br>3132 NE HARRISON ST<br>ISSAQUAH, WA 98029 |                                        |                               |
| DATE                                                                                                        | DESIGNED                               | DECEMBER 2017                 |
|                                                                                                             | DRAWN                                  | GARRETT BENSON                |
|                                                                                                             | APPROVED                               | STACIA BLOOM, P.E.            |
|                                                                                                             |                                        | KEVIN J. VANDERZANDEN, P.L.S. |
|                                                                                                             |                                        | PROJECT MANAGER               |
| SHEET                                                                                                       | OF                                     |                               |
| C1.01                                                                                                       | 6                                      |                               |
| PROJECT NUMBER<br>10001R                                                                                    |                                        |                               |

12-14-2017

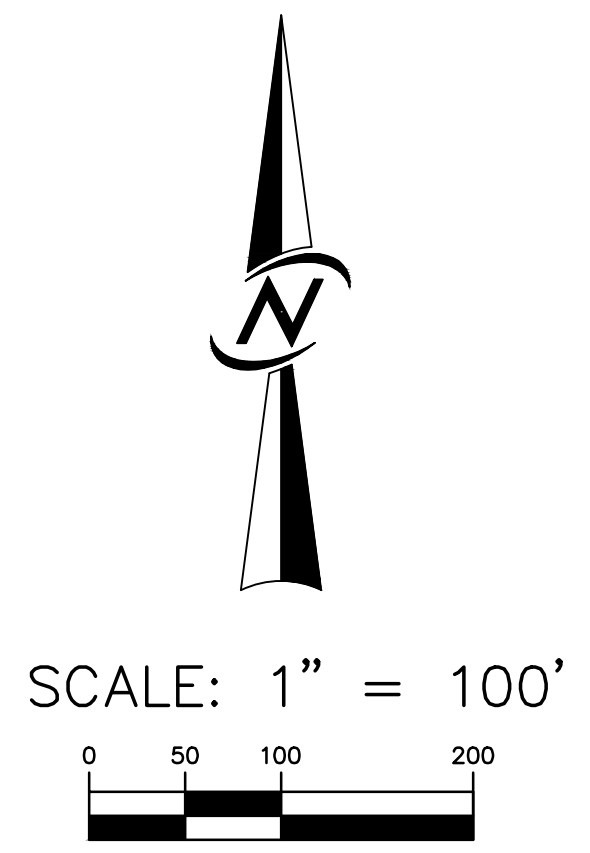




**RIGHT-OF-WAY ENCROACHMENT**  
SCALE: 1" = 10'

**NOTES**

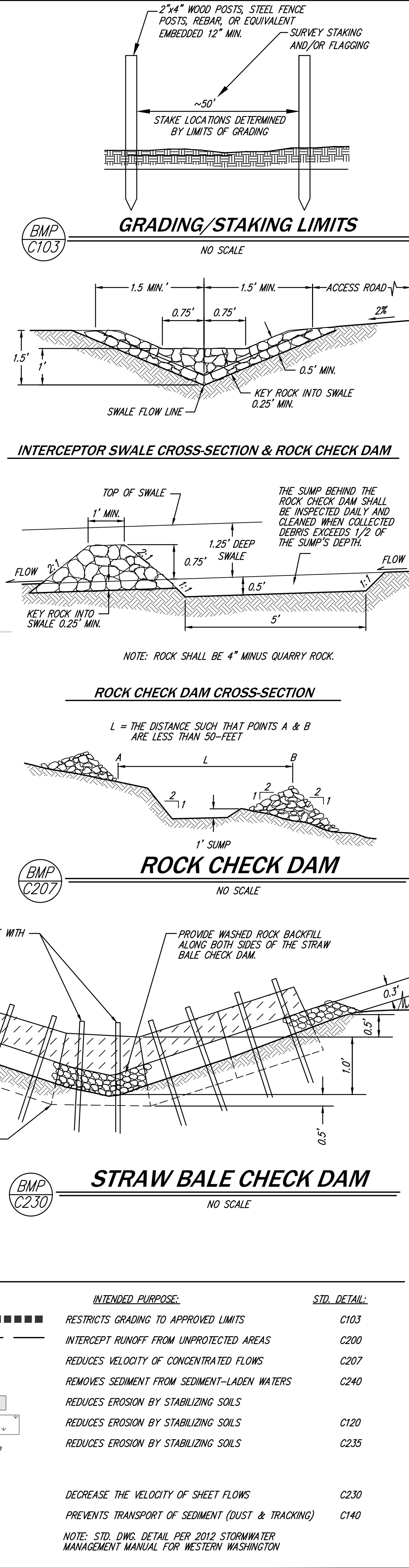
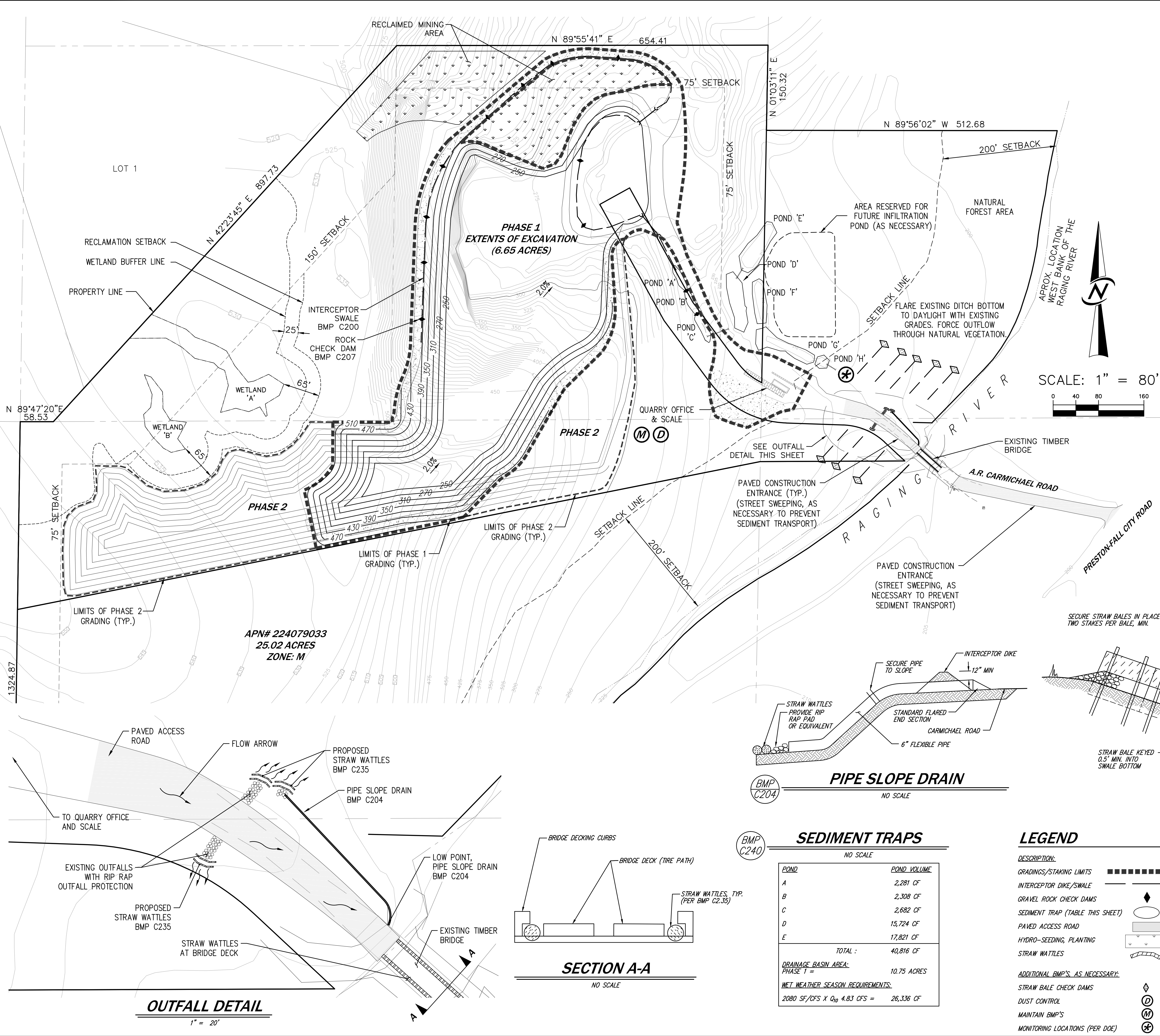
1. ON-SITE CLEARING, GRADING, OR EXCAVATION, EXCLUDING THAT NECESSARY FOR REQUIRED ACCESS ROADWAY OR STORM DRAINAGE FACILITY CONSTRUCTION OR ACTIVITIES IN ACCORDANCE WITH AN APPROVED RECLAMATION PLAN, SHALL NOT BE PERMITTED WITHIN 50 FEET OF ANY OTHER PROPERTY LINE EXCEPT ALONG ANY PORTION OF THE PERIMETER ADJACENT TO ANOTHER MINERAL EXTRACTION OR MATERIAL PROCESSING OPERATION OR M OR F ZONED PROPERTY. IF NATIVE VEGETATION IS RESTORED, TEMPORARY DISTURBANCE RESULTING FROM CONSTRUCTION OF NOISE ATTENUATION FEATURES LOCATED CLOSER THAN 50 FEET SHALL BE PERMITTED (PER KCC 21A.22.060.F).



BASIS OF BEARING:  
N 00°48'50"E BETWEEN THE MONUMENTS  
FOUND IN PLACE AT THE WEST QUARTER CORNER  
AND THE SOUTHWEST CORNER OF SECTION 22,  
TOWNSHIP 24N., RANGE 7E., W.M.

| DATE          | DESIGNED              | DRAWN                 | APPROVED              | PROJECT MANAGER               |
|---------------|-----------------------|-----------------------|-----------------------|-------------------------------|
| DECEMBER 2017 | GARRETT BENSON        | GARRETT BENSON        | STACIA BLOOM, P.E.    | KEVIN J. VANDERZANDEN, P.L.S. |
| DATE          | DESIGNED              | DRAWN                 | APPROVED              | PROJECT MANAGER               |
| 9/2/16        | GARRETT BENSON        | GARRETT BENSON        | STACIA BLOOM, P.E.    | KEVIN J. VANDERZANDEN, P.L.S. |
| 12/14/17      | GARRETT BENSON        | GARRETT BENSON        | STACIA BLOOM, P.E.    | KEVIN J. VANDERZANDEN, P.L.S. |
| REVISIONS     | REVISIONS TO PLAN SET | REVISIONS TO PLAN SET | REVISIONS TO PLAN SET | REVISIONS TO PLAN SET         |
| 1             | COUNTY COMMENTS       | COUNTY COMMENTS       | COUNTY COMMENTS       | COUNTY COMMENTS               |
| 2             | COUNTY COMMENTS       | COUNTY COMMENTS       | COUNTY COMMENTS       | COUNTY COMMENTS               |
| 3             | COUNTY COMMENTS       | COUNTY COMMENTS       | COUNTY COMMENTS       | COUNTY COMMENTS               |
| 4             | COUNTY COMMENTS       | COUNTY COMMENTS       | COUNTY COMMENTS       | COUNTY COMMENTS               |
| 5             | COUNTY COMMENTS       | COUNTY COMMENTS       | COUNTY COMMENTS       | COUNTY COMMENTS               |
| 6             | COUNTY COMMENTS       | COUNTY COMMENTS       | COUNTY COMMENTS       | COUNTY COMMENTS               |
| 7             | COUNTY COMMENTS       | COUNTY COMMENTS       | COUNTY COMMENTS       | COUNTY COMMENTS               |
| 8             | COUNTY COMMENTS       | COUNTY COMMENTS       | COUNTY COMMENTS       | COUNTY COMMENTS               |
| 9             | COUNTY COMMENTS       | COUNTY COMMENTS       | COUNTY COMMENTS       | COUNTY COMMENTS               |
| 10            | COUNTY COMMENTS       | COUNTY COMMENTS       | COUNTY COMMENTS       | COUNTY COMMENTS               |
| 11            | COUNTY COMMENTS       | COUNTY COMMENTS       | COUNTY COMMENTS       | COUNTY COMMENTS               |
| 12            | COUNTY COMMENTS       | COUNTY COMMENTS       | COUNTY COMMENTS       | COUNTY COMMENTS               |
| 13            | COUNTY COMMENTS       | COUNTY COMMENTS       | COUNTY COMMENTS       | COUNTY COMMENTS               |
| 14            | COUNTY COMMENTS       | COUNTY COMMENTS       | COUNTY COMMENTS       | COUNTY COMMENTS               |
| 15            | COUNTY COMMENTS       | COUNTY COMMENTS       | COUNTY COMMENTS       | COUNTY COMMENTS               |
| 16            | COUNTY COMMENTS       | COUNTY COMMENTS       | COUNTY COMMENTS       | COUNTY COMMENTS               |
| 17            | COUNTY COMMENTS       | COUNTY COMMENTS       | COUNTY COMMENTS       | COUNTY COMMENTS               |
| 18            | COUNTY COMMENTS       | COUNTY COMMENTS       | COUNTY COMMENTS       | COUNTY COMMENTS               |
| 19            | COUNTY COMMENTS       | COUNTY COMMENTS       | COUNTY COMMENTS       | COUNTY COMMENTS               |
| 20            | COUNTY COMMENTS       | COUNTY COMMENTS       | COUNTY COMMENTS       | COUNTY COMMENTS               |
| 21            | COUNTY COMMENTS       | COUNTY COMMENTS       | COUNTY COMMENTS       | COUNTY COMMENTS               |
| 22            | COUNTY COMMENTS       | COUNTY COMMENTS       | COUNTY COMMENTS       | COUNTY COMMENTS               |
| 23            | COUNTY COMMENTS       | COUNTY COMMENTS       | COUNTY COMMENTS       | COUNTY COMMENTS               |
| 24            | COUNTY COMMENTS       | COUNTY COMMENTS       | COUNTY COMMENTS       | COUNTY COMMENTS               |
| 25            | COUNTY COMMENTS       | COUNTY COMMENTS       | COUNTY COMMENTS       | COUNTY COMMENTS               |
| 26            | COUNTY COMMENTS       | COUNTY COMMENTS       | COUNTY COMMENTS       | COUNTY COMMENTS               |
| 27            | COUNTY COMMENTS       | COUNTY COMMENTS       | COUNTY COMMENTS       | COUNTY COMMENTS               |
| 28            | COUNTY COMMENTS       | COUNTY COMMENTS       | COUNTY COMMENTS       | COUNTY COMMENTS               |
| 29            | COUNTY COMMENTS       | COUNTY COMMENTS       | COUNTY COMMENTS       | COUNTY COMMENTS               |
| 30            | COUNTY COMMENTS       | COUNTY COMMENTS       | COUNTY COMMENTS       | COUNTY COMMENTS               |
| 31            | COUNTY COMMENTS       | COUNTY COMMENTS       | COUNTY COMMENTS       | COUNTY COMMENTS               |
| 32            | COUNTY COMMENTS       | COUNTY COMMENTS       | COUNTY COMMENTS       | COUNTY COMMENTS               |
| 33            | COUNTY COMMENTS       | COUNTY COMMENTS       | COUNTY COMMENTS       | COUNTY COMMENTS               |
| 34            | COUNTY COMMENTS       | COUNTY COMMENTS       | COUNTY COMMENTS       | COUNTY COMMENTS               |
| 35            | COUNTY COMMENTS       | COUNTY COMMENTS       | COUNTY COMMENTS       | COUNTY COMMENTS               |
| 36            | COUNTY COMMENTS       | COUNTY COMMENTS       | COUNTY COMMENTS       | COUNTY COMMENTS               |
| 37            | COUNTY COMMENTS       | COUNTY COMMENTS       | COUNTY COMMENTS       | COUNTY COMMENTS               |
| 38            | COUNTY COMMENTS       | COUNTY COMMENTS       | COUNTY COMMENTS       | COUNTY COMMENTS               |
| 39            | COUNTY COMMENTS       | COUNTY COMMENTS       | COUNTY COMMENTS       | COUNTY COMMENTS               |
| 40            | COUNTY COMMENTS       | COUNTY COMMENTS       | COUNTY COMMENTS       | COUNTY COMMENTS               |
| 41            | COUNTY COMMENTS       | COUNTY COMMENTS       | COUNTY COMMENTS       | COUNTY COMMENTS               |
| 42            | COUNTY COMMENTS       | COUNTY COMMENTS       | COUNTY COMMENTS       | COUNTY COMMENTS               |
| 43            | COUNTY COMMENTS       | COUNTY COMMENTS       | COUNTY COMMENTS       | COUNTY COMMENTS               |
| 44            | COUNTY COMMENTS       | COUNTY COMMENTS       | COUNTY COMMENTS       | COUNTY COMMENTS               |
| 45            | COUNTY COMMENTS       | COUNTY COMMENTS       | COUNTY COMMENTS       | COUNTY COMMENTS               |
| 46            | COUNTY COMMENTS       | COUNTY COMMENTS       | COUNTY COMMENTS       | COUNTY COMMENTS               |
| 47            | COUNTY COMMENTS       | COUNTY COMMENTS       | COUNTY COMMENTS       | COUNTY COMMENTS               |
| 48            | COUNTY COMMENTS       | COUNTY COMMENTS       | COUNTY COMMENTS       | COUNTY COMMENTS               |
| 49            | COUNTY COMMENTS       | COUNTY COMMENTS       | COUNTY COMMENTS       | COUNTY COMMENTS               |
| 50            | COUNTY COMMENTS       | COUNTY COMMENTS       | COUNTY COMMENTS       | COUNTY COMMENTS               |
| 51            | COUNTY COMMENTS       | COUNTY COMMENTS       | COUNTY COMMENTS       | COUNTY COMMENTS               |
| 52            | COUNTY COMMENTS       | COUNTY COMMENTS       | COUNTY COMMENTS       | COUNTY COMMENTS               |
| 53            | COUNTY COMMENTS       | COUNTY COMMENTS       | COUNTY COMMENTS       | COUNTY COMMENTS               |
| 54            | COUNTY COMMENTS       | COUNTY COMMENTS       | COUNTY COMMENTS       | COUNTY COMMENTS               |
| 55            | COUNTY COMMENTS       | COUNTY COMMENTS       | COUNTY COMMENTS       | COUNTY COMMENTS               |
| 56            | COUNTY COMMENTS       | COUNTY COMMENTS       | COUNTY COMMENTS       | COUNTY COMMENTS               |
| 57            | COUNTY COMMENTS       | COUNTY COMMENTS       | COUNTY COMMENTS       | COUNTY COMMENTS               |
| 58            | COUNTY COMMENTS       | COUNTY COMMENTS       | COUNTY COMMENTS       | COUNTY COMMENTS               |
| 59            | COUNTY COMMENTS       | COUNTY COMMENTS       | COUNTY COMMENTS       | COUNTY COMMENTS               |
| 60            | COUNTY COMMENTS       | COUNTY COMMENTS       | COUNTY COMMENTS       | COUNTY COMMENTS               |
| 61            | COUNTY COMMENTS       | COUNTY COMMENTS       | COUNTY COMMENTS       | COUNTY COMMENTS               |
| 62            | COUNTY COMMENTS       | COUNTY COMMENTS       | COUNTY COMMENTS       | COUNTY COMMENTS               |
| 63            | COUNTY COMMENTS       | COUNTY COMMENTS       | COUNTY COMMENTS       | COUNTY COMMENTS               |
| 64            | COUNTY COMMENTS       | COUNTY COMMENTS       | COUNTY COMMENTS       | COUNTY COMMENTS               |
| 65            | COUNTY COMMENTS       | COUNTY COMMENTS       | COUNTY COMMENTS       | COUNTY COMMENTS               |
| 66            | COUNTY COMMENTS       | COUNTY COMMENTS       | COUNTY COMMENTS       | COUNTY COMMENTS               |
| 67            | COUNTY COMMENTS       | COUNTY COMMENTS       | COUNTY COMMENTS       | COUNTY COMMENTS               |
| 68            | COUNTY COMMENTS       | COUNTY COMMENTS       | COUNTY COMMENTS       | COUNTY COMMENTS               |
| 69            | COUNTY COMMENTS       | COUNTY COMMENTS       | COUNTY COMMENTS       | COUNTY COMMENTS               |
| 70            | COUNTY COMMENTS       | COUNTY COMMENTS       | COUNTY COMMENTS       | COUNTY COMMENTS               |
| 71            | COUNTY COMMENTS       | COUNTY COMMENTS       | COUNTY COMMENTS       | COUNTY COMMENTS               |
| 72            | COUNTY COMMENTS       | COUNTY COMMENTS       | COUNTY COMMENTS       | COUNTY COMMENTS               |
| 73            | COUNTY COMMENTS       | COUNTY COMMENTS       | COUNTY COMMENTS       | COUNTY COMMENTS               |
| 74            | COUNTY COMMENTS       | COUNTY COMMENTS       | COUNTY COMMENTS       | COUNTY COMMENTS               |
| 75            | COUNTY COMMENTS       | COUNTY COMMENTS       | COUNTY COMMENTS       | COUNTY COMMENTS               |
| 76            | COUNTY COMMENTS       | COUNTY COMMENTS       | COUNTY COMMENTS       | COUNTY COMMENTS               |
| 77            | COUNTY COMMENTS       | COUNTY COMMENTS       | COUNTY COMMENTS       | COUNTY COMMENTS               |
| 78            | COUNTY COMMENTS       | COUNTY COMMENTS       | COUNTY COMMENTS       | COUNTY COMMENTS               |
| 79            | COUNTY COMMENTS       | COUNTY COMMENTS       | COUNTY COMMENTS       | COUNTY COMMENTS               |
| 80            | COUNTY COMMENTS       | COUNTY COMMENTS       | COUNTY COMMENTS       | COUNTY COMMENTS               |
| 81            | COUNTY COMMENTS       | COUNTY COMMENTS       | COUNTY COMMENTS       | COUNTY COMMENTS               |
| 82            | COUNTY COMMENTS       | COUNTY COMMENTS       | COUNTY COMMENTS       | COUNTY COMMENTS               |
| 83            | COUNTY COMMENTS       | COUNTY COMMENTS       | COUNTY COMMENTS       | COUNTY COMMENTS               |
| 84            | COUNTY COMMENTS       | COUNTY COMMENTS       | COUNTY COMMENTS       | COUNTY COMMENTS               |
| 85            | COUNTY COMMENTS       | COUNTY COMMENTS       | COUNTY COMMENTS       | COUNTY COMMENTS               |
| 86            | COUNTY COMMENTS       | COUNTY COMMENTS       | COUNTY COMMENTS       | COUNTY COMMENTS               |
| 87            | COUNTY COMMENTS       | COUNTY COMMENTS       | COUNTY COMMENTS       | COUNTY COMMENTS               |
| 88            | COUNTY COMMENTS       | COUNTY COMMENTS       | COUNTY COMMENTS       | COUNTY COMMENTS               |
| 89            | COUNTY COMMENTS       | COUNTY COMMENTS       | COUNTY COMMENTS       | COUNTY COMMENTS               |
| 90            | COUNTY COMMENTS       | COUNTY COMMENTS       | COUNTY COMMENTS       | COUNTY COMMENTS               |
| 91            | COUNTY COMMENTS       | COUNTY COMMENTS       | COUNTY COMMENTS       | COUNTY COMMENTS               |
| 92            | COUNTY COMMENTS       | COUNTY COMMENTS       | COUNTY COMMENTS       | COUNTY COMMENTS               |
| 93            | COUNTY COMMENTS       | COUNTY COMMENTS       | COUNTY COMMENTS       | COUNTY COMMENTS               |
| 94            | COUNTY COMMENTS       | COUNTY COMMENTS       | COUNTY COMMENTS       | COUNTY COMMENTS               |
| 95            | COUNTY COMMENTS       | COUNTY COMMENTS       | COUNTY COMMENTS       | COUNTY COMMENTS               |
| 96            | COUNTY COMMENTS       | COUNTY COMMENTS       | COUNTY COMMENTS       | COUNTY COMMENTS               |
| 97            | COUNTY COMMENTS       | COUNTY COMMENTS       | COUNTY COMMENTS       | COUNTY COMMENTS               |
| 98            | COUNTY COMMENTS       | COUNTY COMMENTS       | COUNTY COMMENTS       | COUNTY COMMENTS               |
| 99            | COUNTY COMMENTS       | COUNTY COMMENTS       | COUNTY COMMENTS       | COUNTY COMMENTS               |
| 100           | COUNTY COMMENTS       | COUNTY COMMENTS       | COUNTY COMMENTS       | COUNTY COMMENTS               |





| DATE                  | DESIGNED       | DRAWN          | APPROVED          | PROJECT MANAGER               |
|-----------------------|----------------|----------------|-------------------|-------------------------------|
| DECEMBER 2017         | GARRETT BENSON | GARRETT BENSON | STACH BLOOM, P.E. | KEVIN J. VANZERZANDEN, P.L.S. |
| SHEET                 | OF             |                |                   |                               |
| C2.01                 | 6              |                |                   |                               |
| PROJECT NUMBER 10001R |                |                |                   |                               |

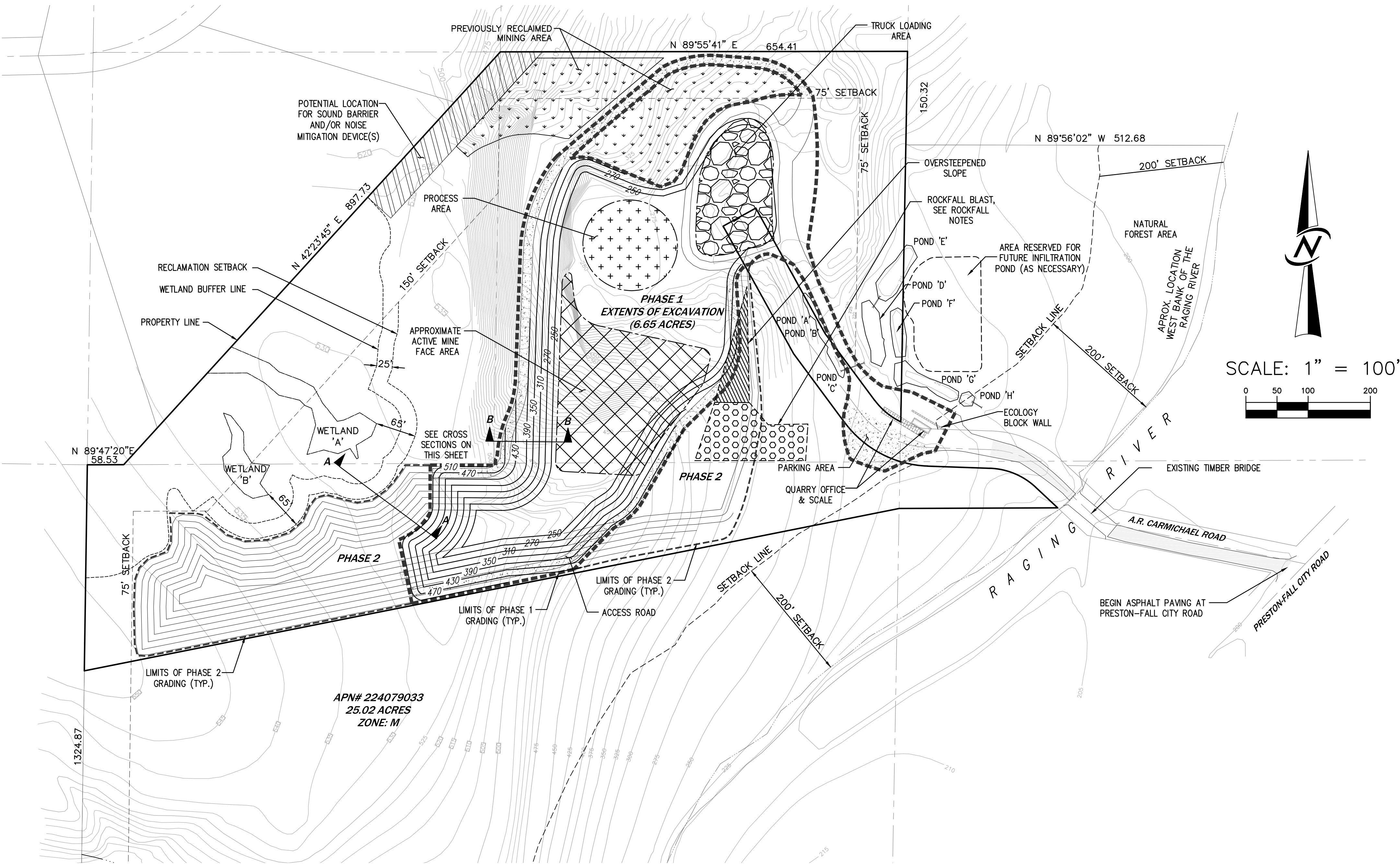
14711 NE 29th Place Suite 101  
Bellevue, Washington 98007  
425.885.7877 Fax 425.885.7963

CORE DESIGN

ENGINEERING • PLANNING • SURVEYING

12-14-2017





EXCAVATION LIMITS

|         |            |              |
|---------|------------|--------------|
| PHASE 1 | 6.65 ACRES | 1,157,754 CY |
| PHASE 2 | 9.53 ACRES | 435,246 CY   |

INFILTRATION PONDS- SIZING CALCULATIONS

THE TRIBUTARY BASIN ASSOCIATED WITH PHASE 1 CONSISTS OF APPROXIMATELY 10.75 ACRES. THIS AREA IS TRIBUTARY TO THE PRESETTLING PONDS (POND 'A' - POND 'C') AND INFILTRATION PONDS (POND 'D' - POND 'H') THAT HAVE BEEN SIZED FOR PRESETTLING AND FULL INFILTRATION. THE PRESETTLING PONDS AND INFILTRATION PONDS CAN ACCOMMODATE 6.65 ACRES OF AN OPEN MINING AREA. LIMITS OF THE OPEN MINING AREA SHALL NOT EXCEED 6.65 ACRES WITHOUT ONE OF THE FOLLOWING:

- 1) RECLAMATION OF MINING AREAS
- 2) INCREASE/ADDITION OF INFILTRATION PONDS TO ACCOMMODATE THE INCREASE IN OPEN MINING AREA

| PRESETTLING POND | MODELED VOLUME (CF) |
|------------------|---------------------|
| A                | 2,281               |
| B                | 2,308               |
| C                | 2,682               |
| TOTAL :          | 5,028               |

| INFILTRATION POND | MODELED VOLUME (CF) |
|-------------------|---------------------|
| D                 | 15,724              |
| E                 | 17,821              |
| F                 | 9,085               |
| G/H               | 13,252              |
| TOTAL :           | 55,882              |

BUFFER AVERAGING

BUFFER AVERAGING HAS BEEN IMPLEMENTED IN A MANNER SUCH THAT THE ECOLOGICAL STRUCTURE AND FUNCTION OF THE RESULTING BUFFER IS EQUIVALENT TO THE STRUCTURE AND FUNCTION BEFORE AVERAGING. THE TOTAL AREA IS NOT REDUCED. THE BUFFER AREA IS CONTIGUOUS, AND AVERAGING DOES NOT REDUCE THE REQUIRED BUFFER WIDTH BY GREATER THAN 20 PERCENT.

|             | STANDARD BUFFER | REDUCED BUFFER W/ BUFFER AVERAGING |
|-------------|-----------------|------------------------------------|
| WETLAND 'A' | 80'             | 65'                                |
| WETLAND 'B' | 80'             | 65'                                |

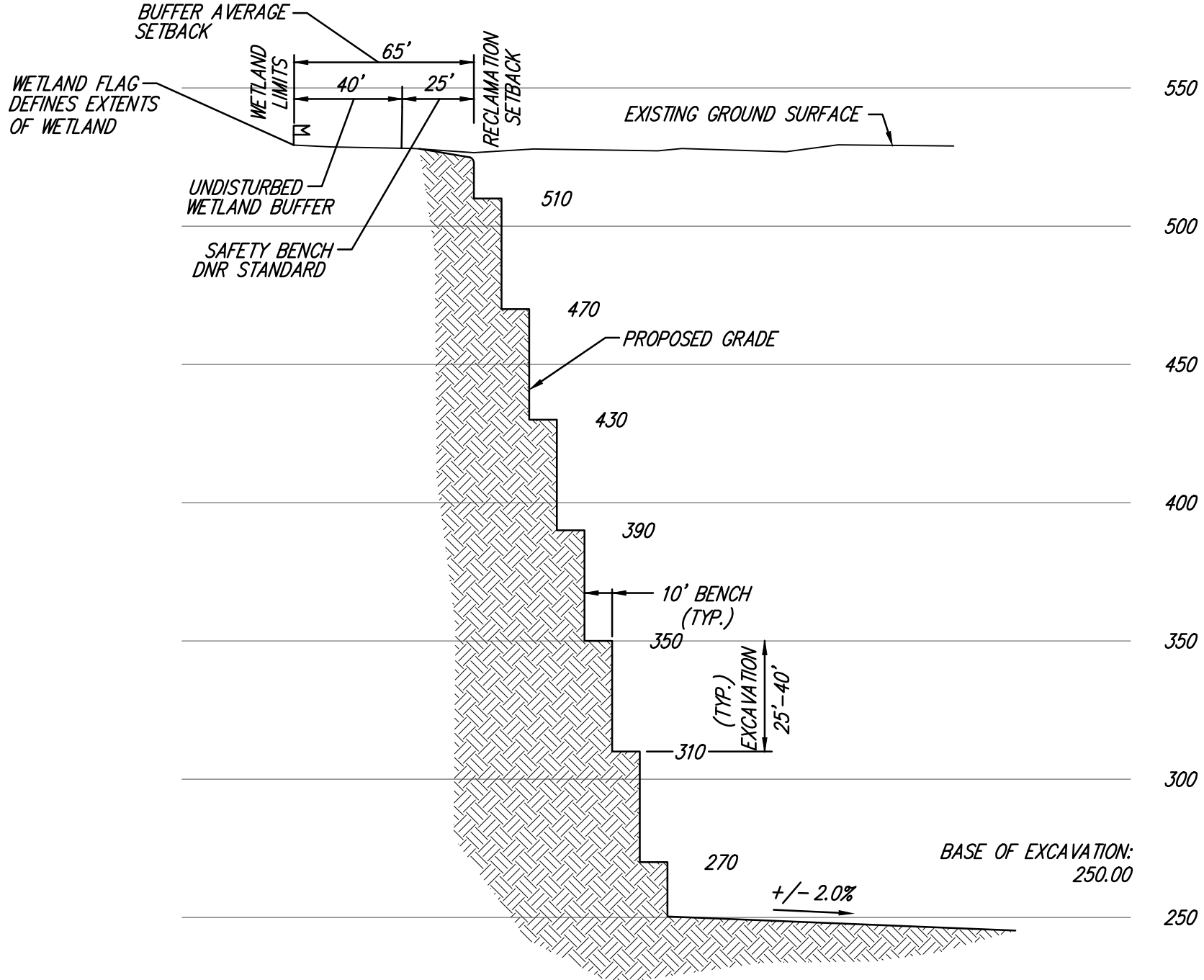
NOTE: SEE DIAGRAMS ON SHEET C3.31 TO DEPICT THE BUFFER AVERAGING OF THE WETLANDS

ROCKFALL NOTES:

1. REFER TO "KING COUNTY-RECOMMENDATION COMPLIANCE MEMORANDUM" PREPARED BY GEOENGINEERS, DATED SEPTEMBER 28, 2017.
2. REFER TO "ERP BLASTING PLAN" PREPARED BY EASTSIDE ROCK PRODUCTS
3. WHERE 1H:1V SLOPES EXIST, AREA SHALL BE MONITORED REGULARLY, PARTICULAR ATTENTION DURING TIMES OF PRECIPITATION AND WHEN ACTIVELY ADDING/REMOVING MATERIAL.
4. ALL DISTURBED AREAS BELOW 300 FEET OF ELEVATION, INCLUDING THE ROCKFALL AREA, SHALL BE SEEDED WITH A 50/50 MIX OF DOT EROSION CONTROL GRASS AND WHITE CLOVER. STRAW MULCH WILL BE USED TO COVER SEEDED AREAS AS WELL.
5. LONG TERM STABILIZATION RESULTS ARE ANTICIPATED TO NATURALLY RECOVER WITH NATIVE VEGETATION.
6. METHODS FOR ROCK EXTRACTION ARE NOW MODIFIED FOR FUTURE WORK, INCLUDING PULLING BACK ROCK AND MATERIAL FROM THE SLOPE TO HELP PREVENT MATERIAL FROM SLIDING DOWN THE SLOPE BECAUSE OF BLASTING. EACH BLAST IN THE REGION WILL BE STRIPPED COMPLETELY, EVALUATED, AND INDIVIDUAL SHOT DESIGNS WILL BE DEVELOPED. EVALUATING EACH SHOT WILL RESULT IN MODIFICATIONS TO BEST MITIGATE POTENTIAL HAZARDS ASSOCIATED WITH EACH SHOT.

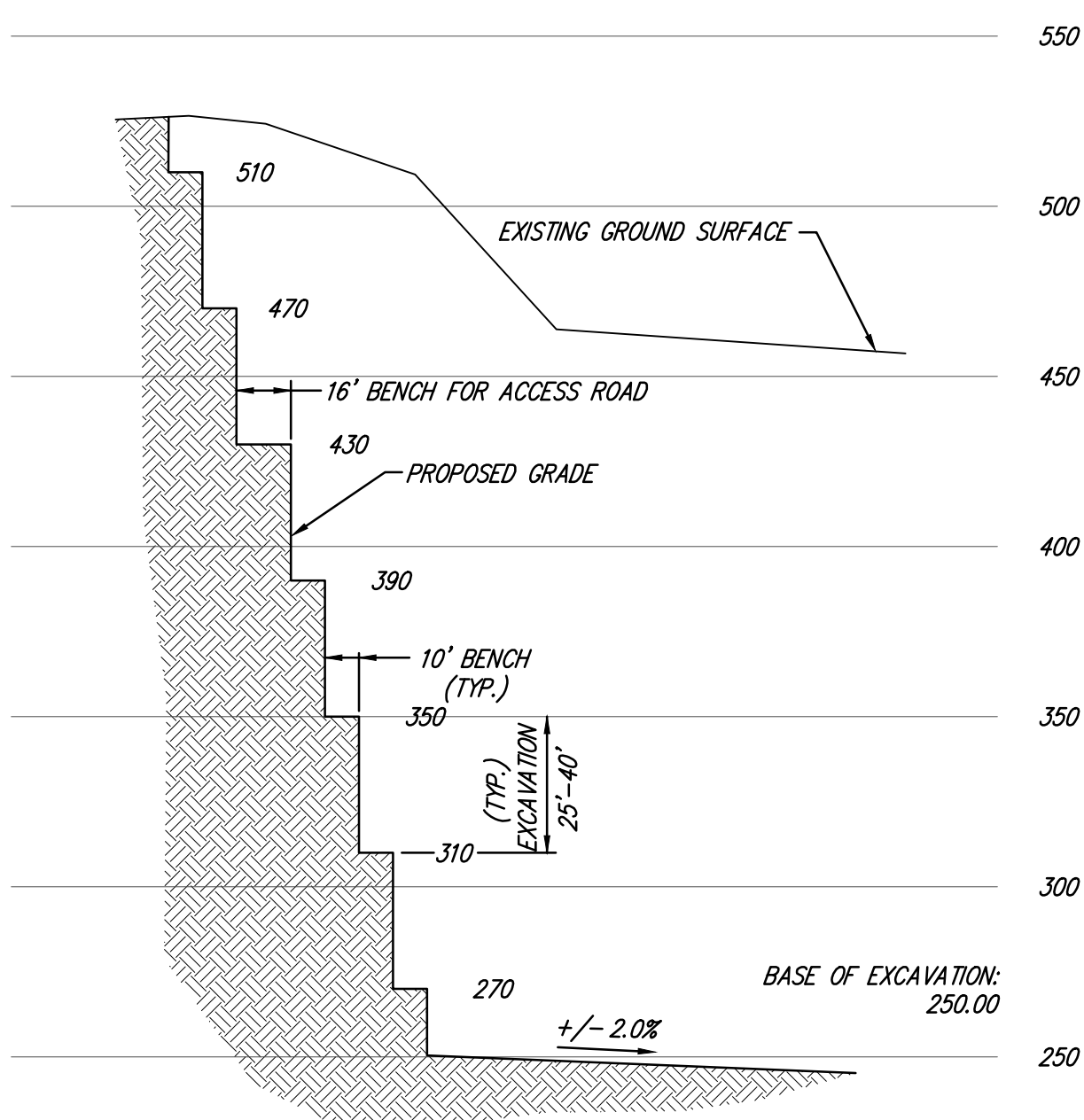
LEGEND

|                     |  |                                |  |
|---------------------|--|--------------------------------|--|
| PROPERTY LINE       |  | QUARRY SCALE                   |  |
| DEVELOPMENT SETBACK |  | RECLAIMED AREA                 |  |
| WETLAND AREA        |  | SOUND BARRIER/NOISE MITIGATION |  |
| WETLAND BUFFER      |  | OVERSTEEPENED SLOPE            |  |
| PHASE 1 CONTOUR     |  | ROCK FALL BLAST                |  |
| PHASE 2 CONTOUR     |  | TRUCK LOADING AREA             |  |
| PHASE 1 FLAG LIMITS |  | PROCESS AREA                   |  |
| INFILTRATION PONDS  |  | ACTIVE MINE FACE AREA          |  |
| CULVERT             |  |                                |  |
| PAVED ASPHALT       |  |                                |  |
| ACCESS ROAD/PARKING |  |                                |  |
| QUARRY OFFICE       |  |                                |  |



SECTION A-A

1"=50' HOR.  
1"=50' VER.



SECTION B-B

1"=50' HOR.  
1"=50' VER.







***GRADING PERMIT CONDITIONS (CONTINUED)***

NOISE

27. THE OPERATION SHALL COMPLY WITH KCC 21A.22.070.A.1, WHICH REQUIRES COMPLIANCE WITH THE NOISE STANDARDS IN KCC CHAPTER 12.86.

28. MAXIMUM HOURS OF OPERATION ARE AS FOLLOWS:

- a. 7:00 A.M. TO 7:00 P.M. MONDAY THROUGH FRIDAY; PROVIDED, HOWEVER, LOADING OF THE TRUCKS SHALL BE RESTRICTED TO THE HOURS OF 7:30 AM TO 4 PM.
- b. 8:00 AM TO 4:30 PM SATURDAY; PROVIDED, HOWEVER, THAT ACTIVITY ON SATURDAYS SHALL BE RESTRICTED MAINTENANCE OF EQUIPMENT.

THESE HOURS OF OPERATION MAY BE INCREASED ONLY IN THE EVENT OF AN EMERGENCY SITUATION AS IDENTIFIED BY THE MANAGER OR PDER. MAINTENANCE OF EQUIPMENT MAY OCCUR ON THE SITE ONLY DURING THE STIPULATED HOURS OF OPERATION. MINOR MAINTENANCE, SUCH AS LUBE OR OIL CHANGES, OF EQUIPMENT IS PERMISSIBLE DURING NON-OPERATING HOURS PROVIDED THAT IN NO EVENT SHALL SUCH EQUIPMENT BE STARTED AND TESTED OUTSIDE THE APPROVED OPERATING HOURS (P-SUFFIX #4).

29. CRUSHING AND DRILLING SHALL NOT BE CONDUCTED CONCURRENTLY AT ANY LOCATION ON THE SITE UNTIL A COMPREHENSIVE NOISE STUDY, APPROVED BY DPER, DEMONSTRATES THAT CONCURRENT OPERATIONS CAN BE CONDUCTED IN COMPLIANCE WITH PERMISSIBLE SOUND LEVELS IN KCC 12.86.

30. THE ONLY WORK THAT MAY BE CONDUCTED AT AN ELEVATION OF GREATER THAN 150 FEET ABOVE OF QUARRY ROAD FLOOR IS ROCK DRILLING AND EXCAVATION FOR STRIPPING OVERBURDEN UNTIL A COMPREHENSIVE NOISE STUDY, APPROPER, DEMONSTRATES THAT OTHER QUARRY OPERATIONS CAN OPERATE ABOVE ELEVATION 150 IN COMPLIANCE WITH PERMISSIBLE SOUND LEVELS IN KCC 12.86.

31. PRIOR TO INITIATING FULL OPERATIONS AT THE SITE, THE PERMITTEE SHALL DEMONSTRATE COMPLIANCE WITH THE PERMISSIBLE SOUND LEVELS AS ESTABLISHED IN TITLE 12.

32. BERMS, SOLID FENCING, AND LANDSCAPING ON BOTH SIDES OF THE CARMICHAEL ROAD, FROM THE INTERSECTION OF THE PRESTON-FALL CITY ROAD TO THE QUARRY OFFICE AND SCALE, SHALL BE MAINTAINED TO THE SATISFACTION OF DPWR AS NECESSARY TO REASONABLY MITIGATE NOISE AND VISUAL IMPACTS OF THE QUARRY, AS THEY AFFECT PERSONS TRAVELING ON THE PRESTON-FALL CITY ROAD AND ADJACENT AND NEARBY RESIDENTS.

33. THE APPLICANT SHALL CONSTRUCT AND/OR MAINTAIN ROCK BERMS OR ACOUSTICAL WALLS AROUND THE ROCK CRUSHER, SCREENER, AND OTHER SIMILAR TYPES OF STATIONARY AND SEMI-STATIONARY NOISE PRODUCERS. SAID BERMS OR WALLS SHALL BE INCLUDED IN THE NOISE COMPREHENSIVE NOISE PLAN AND CONSTRUCTED TO THE SATISFACTION DPGR.

34.DPER SHALL HAVE THE AUTHORITY TO REQUIRE MONITORING DEVICES TO BE LOCATED ON OR ADJACENT TO THE SITE TO ASSURE COMPLIANCE WITH KING COUNTY NOISE REGULATIONS. THE PERMITTEE SHALL REIMBURSE THE COUNTY FOR ALL COSTS INCURRED TO CONDUCT INDEPENDENT NOISE MONITORING.

35. THE PERMITTEE SHALL PROVIDE NOTIFICATION TO DPER FOR AND MUST RECEIVE PRIOR APPROVAL FROM DPER FOR ANY MINING-RELATED ACTIVITIES ABOVE AN ELEVATION 150 FEET.

AIR QUALITY

37. THE PERMITTEE SHALL COMPLY WITH PUGET SOUND CLEAN AIR AGENCY (PSCAA) REQUIREMENTS FOR REGISTRATION OR PERMITS, AND COPIES OF THE PERMIT OR REGISTRATION SHALL BE KEPT ON-SITE AND AVAILABLE FOR DEPARTMENT AND PUBLIC INSPECTION. THE PERMITTEE SHALL COMPLY WITH ALL OTHER PSCAA REQUIREMENTS, INCLUDING, BUT NOT LIMITED TO, EMISSION STANDARDS, CONTROL METHODS, BEST MANAGEMENT PRACTICES, MONITORING, AND/OR INSPECTIONS. MONITORING DATA RELATED TO REQUIRED PSCAA REGISTRATION OR PERMITS SHALL BE PROVIDED TO DPER ON THE SUBMITTAL DATES (KCC 21.22.070.C.1 AND KCC 21.22.070.C.2).

38.DUST AND SMOKE FROM PROCESSING OPERATIONS AT THE SITE SHALL BE CONTROLLED, SUCH THAT THERE IS NO SIGNIFICANT INCREASE THE EXISTING LEVELS OF SUSPENDED PARTICULATES AT THE PERIMETER OF THE SITE, IN COMPLIANCE WITH KCC 21.22.070.C.3.

TRANSPORTATION

38. THE APPLICANT SHALL BE RESPONSIBLE FOR MAINTENANCE, TO THE SATISFACTION OF KCDOT, OF EXISTING WARNING SIGNAGE ALONG PRESTON-FALL CITY ROAD, WHICH WAS PREVIOUSLY APPROVED BY KCDOT AND INSTALLED TO COMPLY WITH THE REZONE CONDITIONS. IF THERE ARE CHANGES TO THE TRAFFIC FLOW OR NATURE OF TRUCK OPERATIONS ALONG PRESTON-FALL CITY ROAD, THE APPLICANT MAY BE REQUIRED TO UPDATE THE SPECIFIC CHARACTER AND NATURE OF THE SIGNAGE WHEN DETERMINED NECESSARY BY KCDOT IN ACCORDANCE WITH KCC 21A.22.070.E.

39.DPER OR KCDOT MAY REQUIRE THE APPLICANT TO PROVIDE FLAGGERS WHEN TRUCK TRAFFIC AT THE QUARRY WOULD INTERFERE WITH THE NORMAL TRAFFIC FLOW ALONG THE PRESTON-FALL CITY ROAD OR WHEN OTHERWISE DETERMINED NECESSARY IN ACCORDANCE WITH KCC 21A.22.070.E.

40. THE APPLICANT SHALL NOTIFY DPWR AT LEAST 48 HOURS PRIOR TO COMMENCING CONTINUOUS TRUCKING OPERATIONS, WHICH SHALL MEAN AN AVERAGE, OVER A FOUR HOUR PERIOD, IN EXCESS OF ONE TRUCK LEAVING OR ENTERING THE SITE EVERY 5 MINUTES.

41.NO SIGNS, OTHER THAN SIGNS REQUIRED BY KCC 21A.20 AND THESE CONDITIONS, ARE ALLOWED

42. EXISTING ACCESS ROAD PAVING, FROM THE PRESTON-FALL CITY ROAD TO AT LEAST THE QUARRY OFFICE AND SCALE, IN CONJUNCTION WITH OTHER MEASURES AS NEEDED, SHALL BE MAINTAINED TO THE SATISFACTION OF KDOT AND DPER, TO PREVENT ROCKS, DIRT, MUD, AND ANY RAW OR PROCESSED MATERIAL FROM SPILLING FROM OR BEING TRACKED BY TRUCKS ONTO PUBLIC ROADWAYS IN ACCORDANCE WITH KCC 21A.22.070.D AND TO MINIMIZE ADDITIONAL NOISE.

43.NO ROCK, DEBRIS OR DIRT ATTRIBUTABLE TO TRUCKS LEAVING THE SITE WILL BE TRACKED OR SPILLED ONTO PRESTON-FALL CITY ROAD.

44.RRQ WILL REIMBURSE KING COUNTY DOT FOR ANY COSTS INCURRED BY THEM TO CLEAN UP OR REPAIR DAMAGES TO COUNTY R-O-W RESULTING FROM THE QUARRY OPERATIONS.

VISUAL /AESTHETICS/ SAFETY

46. SECURITY FENCING MEETING THE REQUIREMENTS OF KCC 21A.22.060.C SHALL BE MAINTAINED ALONG THE PARCEL BOUNDARY AT THE NORTHWEST CORNER OF THE PROPERTY A LOCKABLE GATE SHALL BE MAINTAINED AT ANY ROAD ACCESS TO THE SITE. ADDITIONAL WARNING SIGNS, TRESPASS SIGNS, FENCES, AND/OR ALTERNATIVES TO FENCES SHALL BE PROVIDED IF DETERMINED NECESSARY BY DPFR IN ACCORDANCE WITH KCC 21A.22.060.C.

BLASTING

BLASTING

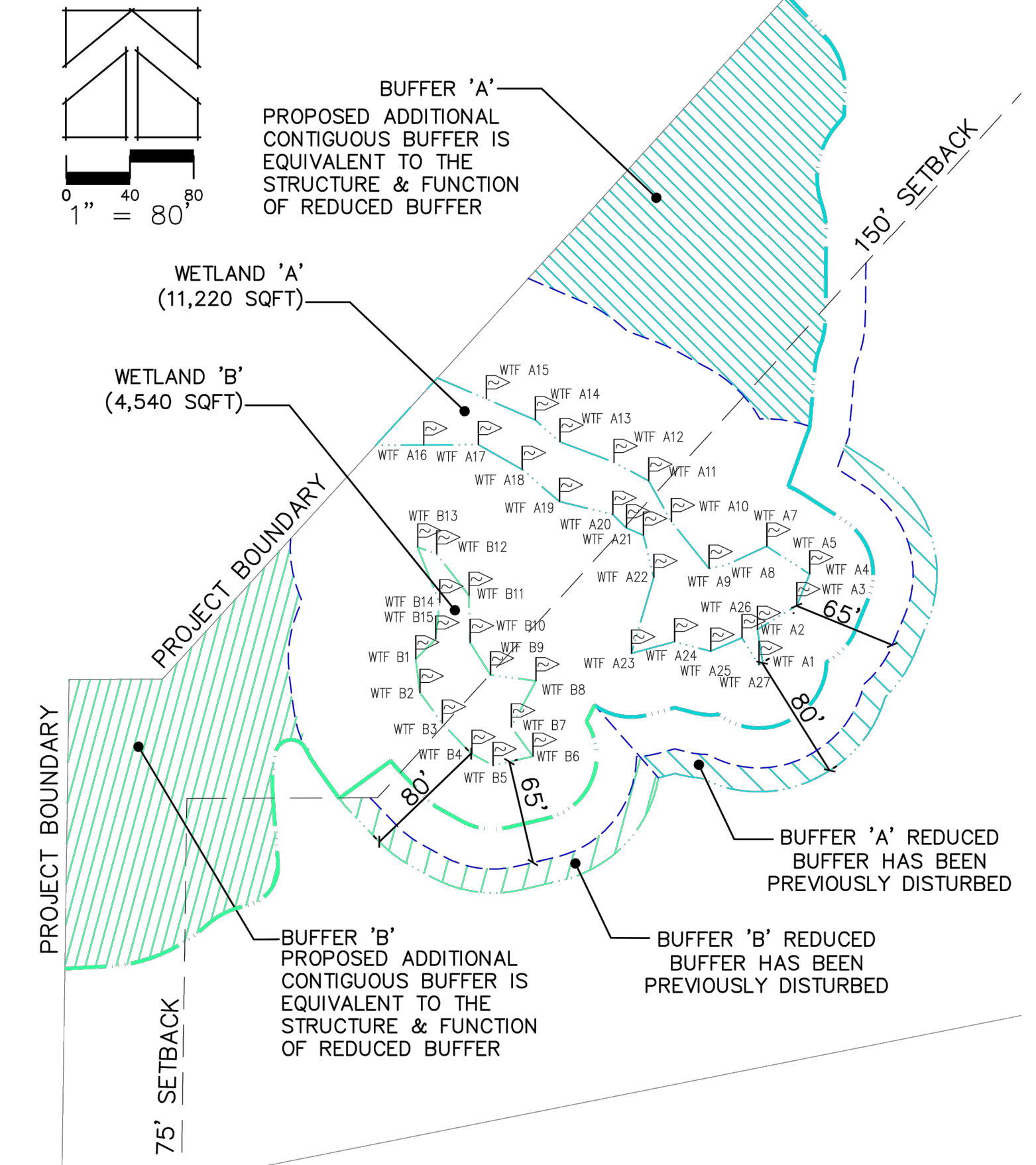
47.BLASTING SHALL BE CONDUCTED UNDER AN APPROVED BLASTING PLAN IN ACCORDANCE WITH KCC 21A.22.070.B

48. IN ACCORDANCE WITH KCC 21A.22.070.B.3, BLASTING SHALL BE CONDUCTED ACCORDING TO A TIME SCHEDULE, PROVIDED TO RESIDENTS WITHIN ONE-HALF MILE OF THE SITE, THAT FEATURES REGULAR OR PREDICTABLE TIMES, EXCEPT IN THE CASE OF AN EMERGENCY. IF REQUESTED BY A RESIDENT, THE OPERATOR SHALL PROVIDE NOTICE OF CHANGES IN THE TIME SCHEDULE AT LEAST TWENTY FOUR HOURS BEFORE THE CHANGES TAKE EFFECT.

49. ALL BLASTING TO BE PERFORMED AT THE SITE SHALL BE "CONFINED" BLASTS AND SHALL BE DONE IN ACCORDANCE WITH STATE AND FEDERAL REGULATIONS. THE PREPARATION AND ACTUAL BLASTING OPERATION SHALL BE CONDUCTED UNDER THE SUPERVISION OF A LICENSED BLASTING CONTRACTOR. ALL BLASTING SHALL BE CONFINED TO NO MORE THAN THREE WEEKS. AT LEAST FIFTEEN MINUTES PRIOR TO THE BLASTING OPERATION, NOTICE SHALL BE GIVEN TO ALL LOCAL AREA RESIDENTS AT LEAST FIVE MINUTES PRIOR TO DETONATION. NOTICE SHALL EITHER BE BY WAY OF A BELL, SHEN, OR WHISTLE AND AUDIBLE WITHIN THE SURROUNDING AREA FOR AT LEAST A DISTANCE OF ONE MILE FROM THE SITE. THE BLAST WARNING SIGNAL SHALL BE MODULATED, DIRECTED, OR OTHERWISE CONTROLLED TO REDUCE ITS IMPACT ON ADJACENT AREAS. TO THE EXTENT FEASIBLE CONSISTENT WITH ASSURING THE ADEQUACY OF THE SIGNAL, FOR ONE MILE RADIUS AREA FROM THE LOCATION OF THE BLAST, EXPLOSIVE MATERIALS SHALL ONLY BE STORED ON THE SUBJECT PROPERTY WITH THE PRIOR APPROVAL OF DPGR.

50. BLAST MONITORING SHALL BE CONDUCTED CONSISTENT WITH THE METHODS SPECIFIED IN THE OFFICE OF SURFACE MINING ENFORCEMENT AND RECLAMATION 1987 BLASTING GUIDANCE MANUAL IN ACCORDANCE WITH KCC 21A.22.070.B, AND REPORTS SUMMARIZING MONITORING RESULTS SHALL BE SUBMITTED TO DPER PROMPTLY AFTER THE BLAST. NO ADDITIONAL BLASTING IS ALLOWED UNTIL THE REPORT IS SUBMITTED TO DPER.

51. THE QUARRY OPERATOR SHALL BE RESPONSIBLE FOR ANY DAMAGE TO NEARBY PROPERTIES, INCLUDING DOMESTIC WATER SUPPLY WELLS, ATTRIBUTABLE TO BLASTING ON THE SUBJECT PROPERTY. CLAIMS FOR ANY SUCH DAMAGE SHALL BE THE RESPONSIBILITY OF THE AFFECTED PROPERTY OWNER AND THE QUARRY OPERATOR TO HANDLE DIRECTLY BETWEEN THEMSELVES; BUT A FAILURE OF THE QUARRY OPERATOR TO RESPOND IN GOOD FAITH TO ANY SUCH CLAIM MAY BE CAUSE FOR DENIAL OF FUTURE GRADING PERMITS, OR PROHIBITION OR RESTRICTION UPON FUTURE BLASTING.



### ***BUFFER AVERAGING DIAGRAM***

[illegible]