

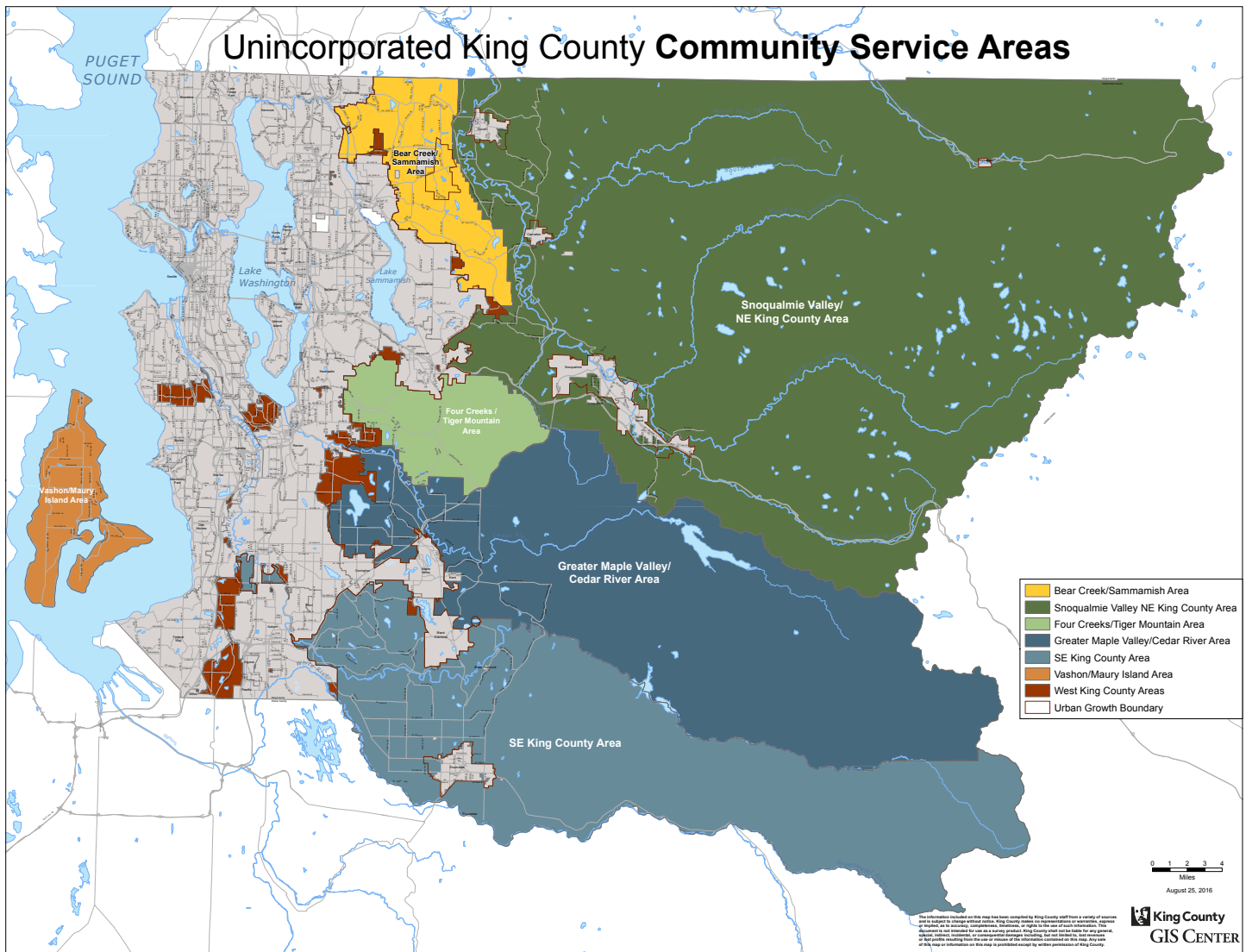
2018



**WEST KING COUNTY CSA
Work Plans**



King County



WEST KING COUNTY AREA includes urban unincorporated areas of King County including East Federal Way, North Highline, West Hill, Fairwood, Fairwood and East Renton.

These communities represent potential annexation areas to neighboring cities.



**Department of
Natural Resources and Parks**
201 South Jackson Street, Suite 700
Seattle, WA 98104

kingcounty.gov/exec/community-service-areas

Alan Painter, Community Service Area Manager | 206.477.4521 | alan.painter@kingcounty.gov

Bong Sto. Domingo, Community Liaison | 206.477.4522 | bong.stodomingo@kingcounty.gov

Marissa Alegria, Community Liaison | 206.477.4523 | marissa.alegria@kingcounty.gov

Welcome to the King County work plan for the West Community Service Area of King County.

Contained in this document are the current work plans, initiatives, ongoing projects, and completed projects of King County departments and separately elected offices available in your community.

We include contact information for the projects in case you would like further details on specific projects or initiatives.

King County's Community Service Area (CSA) program brings representatives of King County government to residents of unincorporated King County.

In addition to the following work program, the CSA team hosts a series of town meetings throughout unincorporated King County as well as offers small grants to community organizations serving residents of unincorporated King County.

For more information visit the CSA web site at: <http://www.kingcounty.gov/exec/community-service-areas.aspx>

You can find more information about King County at the County's web site: www.kingcounty.gov Specific information about initiatives lead by the King County Executive including the following priority initiatives: becoming the nation's best-run government; confronting climate change in King County; building equity and opportunity for all; and strengthening our regional transit mobility can be reached at the Executive's web site: <http://kingcounty.gov/elected/executive/constantine.aspx>

Your community is represented on the King County Council by Councilmembers Larry Gossett (District 2 - West Hill); Pete von Reichbauer (District 7 - East Federal Way); Joe McDermott (District 8 - North Highline); and Reagan Dunn (District 9 - Fairwood). You can access your councilmembers at <http://www.kingcounty.gov/council.aspx>

Thank you for your interest in the many projects and initiatives underway in your community.



Alan Painter
Manager, King County's Community Service Area Program



ASSESSOR'S OFFICE

Property Assessments

2018 Property Valuation and Tax Update

- Provide property tax relief to qualified King County property owners.
- Provide proactive workshops on property tax relief programs, with an emphasis on senior citizen property tax exemptions. Assessor's staff will be available at these workshops to help citizens understand the requirements for the property tax relief, and to register them for the programs, if they qualify.
- Provide detailed valuation and property tax updates for property owners and residents in the unincorporated community service areas.
- Provide physical inspection schedules for all unincorporated community service area neighborhoods and increase public education on the Washington State revenue system at unincorporated community service area community meetings.

Assessor.info@kingcounty.gov | 206.296.7300

COMMUNITY & HUMAN SERVICES

Community Services Operations Programs

Civil Legal Services

Information about civil legal services is available by calling 2-1-1 for non-urgent and non-criminal situations. In case of emergency, call 9-1-1.

Legal assistance is provided to help people in situations including but not limited to:

- legal issues relating to domestic violence or sexual assault
- housing-related legal issues
- people from marginalized communities such as refugees or immigrants
- people living on low incomes
- youth needing legal assistance
- help accessing benefits.

Scott Ninneman 206.263.9072 | scott.ninneman@kingcounty.gov

Domestic Violence (DV) Services

Information about domestic violence (DV) services is available by calling 2-1-1 for non-urgent inquiries, or at <http://www.kingcounty.gov/depts/prosecutor/victim-community-support/domestic-violence.aspx>. In case of emergencies including if you or a loved one is in danger, call 9-1-1. Survivors of domestic violence and their families may also contact any DV agency in the county for assistance.

Scott Ninneman 206.263.9072 | scott.ninneman@kingcounty.gov

Older Adults Services

Information about services for older adults and their caregivers is available by calling Community Living Connections at 206.962.8467 or toll free at

1.844.348.5464

Sexual Assault (SA) Services

Information about sexual assault (SA) services is available by calling 2-1-1 for non-urgent inquiries. In case of an emergency call 9-1-1. Treatment is available for all King County victims of sexual assault at: Harborview Medical Center/Center for Sexual Assault and Traumatic Stress, located at 401 Broadway, Seattle, WA 98104, 206.744.1600; King County Sexual Assault Resource Center, 200 Mill Avenue S., Ste 10, Renton, WA 98057, phone number: 425.226.5062 (Monday through Friday) or the 24 hour Sexual Assault Resource line: 1.888.998.6423.

Scott Ninneman 206.263.9072 | scott.ninneman@kingcounty.gov

Homeless and Housing Programs

Homeless Housing: Homeless Prevention Services and other assistance.

<http://kingcounty.gov/depts/community-human-services/housing.aspx>

Kate Speltz 206.263.9084 | kate.speltz@kingcounty.gov

Hedda McLendon 206.263.8965 | hedda.mclendon@kingcounty.gov

Coordinated Entry for All

Clear path to housing for people experiencing homelessness.

www.kingcounty.gov/cea | **206-328-5796** | cea@kingcounty.gov

Youth and Family Homelessness Prevention Initiative

Client-centered case management and flexible funds to youth ages 12-24 and families with youth who are at imminent risk of homelessness.

<http://kingcounty.gov/beststarts>

Kim Dodds 206.477.7884 | kimberly.dodds@kingcounty.gov

Major Home Repair

The Housing Repair Program services low-to-moderate income owner occupied residences (repairs, weatherization and disability accommodations). Program objective is to maintain housing stock for low-moderate income homeowner. Keeping this housing stock in a safe, decent and habitable condition. To help seniors and veterans age gracefully in place, with the goal to prevent future homelessness.

<http://www.kingcounty.gov/HousingRepair>

Clark Fulmer 206.263.9087 | clark.fulmer@kingcounty.gov

Community Development

Community Development: Capital projects funded for activities to revitalize neighborhoods, improve living conditions for low to-moderate income residents and provide microenterprise assistance to income qualified entrepreneurs. Technical assistance services to help agencies build capacity in applying for grant funding to expand and/or improve their service delivery.

<http://www.kingcounty.gov/cdbg>

Kathy Tremper 206.263.9097 | kathy.tremper@kingcounty.gov

Community & Human Services continued

Housing Capital Projects

Capital Projects: Project financing to qualified nonprofit development organizations or housing authorities in order to provide affordable housing for low-income and vulnerable populations throughout King County.

Quinnie Tan 206.263.5873 | quinnie.tan@kingcounty.gov

Jackie Moynahan 206.477.7524 | jackie.moynahan@kingcounty.gov

Employment & Education Resources

Adult Programs & Services

Employment and training services for unemployed and dislocated workers.

Nancy Loverin 206.263.1394 | nancy.loverin@kingcounty.gov

a) WorkSource Tukwila – A one-stop employment affiliate focused on serving youth aged 16-24 with their employment and education needs. The site also includes King County Career Connections, King County Homeless Employment Program and King County Jobs Initiative. For more information go to: <http://www.kingcounty.gov/eeer>

Jamalia Jones 206.477.5581 | jamalia.jones@kingcounty.gov

b) KC Jobs Initiative – Helps adults ages 18 and older who are currently or were previously involved in the criminal justice system for adults on basic food and needs assistance to get training and living-wage jobs.

<http://www.kingcounty.gov/depts/community-human-services/employment-and-education-resources/adult-services.aspx>

Stephanie Moyes 206.263.9064 | stephanie.moyes@kingcounty.gov

c) Career Connections – Partners with homeless housing agencies to assist homeless families and veterans with education and employment in order to reach independence. Services may include internet services, tuition and book assistance, transportation assistance, tools and uniform assistance.

Stephanie Moyes 206.263.9064 | stephanie.moyes@kingcounty.gov

d) Basic Food Employment & Training (BFET) program – Assists low income adults who are receiving food assistance with their employment and training needs. Services may include help with tuition, job placement and support services.

Stephanie Moyes 206.263.9064 | stephanie.moyes@kingcounty.gov

Youth and Family Programs/Services

Employment, training and education for youth at risk

a) Youth Source – Education, employment and training services for young people ages 16-24 years who have dropped out of school. YouthSource is located in Tukwila. <http://www.kingcounty.gov/depts/community-human-services/employment-and-education-resources/youth-services.aspx>

Jennifer Hill 206.263.9024 | jennifer.hill@kingcounty.gov

Jamalia Jones 206.477.5581 | jamalia.jones@kingcounty.gov

b) Youth & Family Services Program – Friends of Youth serves eligible youth and their families living in the service area.

Stephanie Moyes 206.263.9064 | stephanie.moyes@kingcounty.gov

c) Juvenile Justice Program – Education and employment services for justice-involved youth are available regionally.

Zac Davis 206.263.4162 | zdavis@kingcounty.gov

KC Veterans Program

If you are in need of veterans' resources, please contact the King County Veterans Information and Assistance Call Center at 1-877-904-VETS (8387) or by going to: <http://www.kingcounty.gov/depts/community-human-services/veterans.aspx>

Bryan Fry 206.477.6996 | Bryan.Fry@kingcounty.gov

Veterans, Seniors and Human Services Levy

The Veterans, Seniors and Human Services Levy (VSHSL) was renewed in November 2017 and is a county property tax generating about \$52 million annually, supporting veterans and military servicemembers and their respective families; seniors and their caregivers; and vulnerable populations in King County by funding capital facilities and regional health and human services to promote housing stability, healthy living, financial stability, social engagement and health and human services system improvements and system access throughout King County. Additional information on the VSHSL can be found on the website: www.KingCounty.gov/VSHSL

Leo Flor 206.477.4384 | Leonardo.Flor@kingcounty.gov

Developmental Disability Division

Developmental Disabilities Programs and Services

Programs and services support children prenatal to five and individuals with developmental delays/ disabilities and their families to lead full, integrated, and productive lives: <http://www.kingcounty.gov/ddd>

- Prenatal to Five
 - Promoting Development—creating a comprehensive system for screening developmental milestones with all children prenatal to five and linking families with appropriate referrals.
 - Social-Emotional Wellbeing—supporting close and secure relationships for all children, prenatal to 5 years of age with caregivers and to explore the environment and learn—all in the context of family, community, and culture—with a system of promotion, prevention and treatment, when needed.
 - Early Support for Infants and Toddlers—Individualized “birth-to-three” services to promote optimal development for children with developmental delays or disabilities and their families. Call Family Health Hotline to refer at 800.322.2588.
- School-to-Work Program - assists high school students to leave school with a job and a seamless transition to adult life
- Employment Services - supports adults with individualized pathways to employment so they may ▶

Community & Human Services continued

obtain competitive jobs

- Community Inclusion Services – assists adults to develop meaningful relationships that promote integration into their communities
- Behavioral Support Team Program – provides intensive wrap-around services for children and youth ages 3-17
- Community Information and Outreach Services - supports information, referral, and outreach to individuals and families

Magan Cromar 206.263.9045 | magan.cromar@kingcounty.gov

Behavioral Health and Recovery Division

1. Mental health (24-hour crisis outreach, treatment services) <http://www.kingcounty.gov/bhrd>

Suicide Prevention:

- a) 1.866.4CRISIS
- b) 206.461.3219 TDD
- c) 1.800.273.TALK (8255)

King County Crisis and Commitment Services: 206.263.9200

Jim Vollendroff 206.263.8903 | jim.vollendroff@kingcounty.gov

2. Substance use disorder (inpatient and outpatient services) <http://www.kingcounty.gov/bhrd>

Jim Vollendroff 206.263.8903 | jim.vollendroff@kingcounty.gov

Washington Recovery Helpline 24-hour help with mental health, substance use, and problem gambling:

1.866.789.1511 | www.WaRecoveryHelpLine.org

King County Mental Illness and Drug Dependency (MIDD)

King County's Mental Illness and Drug Dependency (MIDD) is a countywide 0.1% sales tax generating about \$134 million in the 2017-2018 biennium. The funds support programs and services for people living with mental health conditions and/or substance use disorders. King County's MIDD is managed and operated by the King County Department of Community and Human Services Behavioral Health and Recovery Division. A 36-member advisory committee provides guidance to the implementation and evaluation of MIDD programs and services. Among MIDD's forthcoming new initiatives will be a new fund to provide small grants for behavioral health-related projects and activities initiated by King County's rural communities (grant program launch is expected during 2018).

www.kingcounty.gov/midd

Chris Verschuyl 206.263.8941 | chris.verschuyl@kingcounty.gov

Best Starts for Kids Levy

The Best Starts for Kids Levy is an initiative to improve the health and well-being of King County by investing in promotion, prevention and early intervention for children, youth, families and communities.

<http://www.kingcounty.gov/beststarts>

Sheila Capestany 206.263.7823 | sheila.capestany@kingcounty.gov

Communities of Opportunity (COO)

Communities of Opportunity is a network of residents, communities, decision-makers, and funders who believe every community can be a healthy, thriving community—and that equity and racial justice are both necessary and achievable. COO is supported by an innovative public-private partnership between King County and Seattle Foundation to improve the health and well-being of communities across King County.

COO works to achieve more equitable community conditions through community partnerships in geographic and cultural communities, systems and policy change, and shared learning. COO coordinates opportunities for learning, capacity building, and technical assistance available to a wide range of community organizations. Early investments are bringing partnerships together in White Center, SeaTac/Tukwila, Kent, rural Snoqualmie Valley, Seattle's Rainier Valley and Central District, within Vashon's Latinx community, the Seattle urban Native community, and LGBTQ community, to support and test community-driven solutions. In addition, a diverse group of more than 50 organizations across the County received grants to engage in systems/policy work that influences health, social, economic and racial equity.

<http://www.kingcounty.gov/coo>

Andrea Akita 206.477.4203 | andrea.akita@kingcounty.gov

COMPLETED PROJECTS

Veterans, Seniors & Human Services Levy (VSHSL)

Burien Area Residents (12/07/2017)

At these events, King County residents were invited to participate in a community conversation on the strengths and needs of their community with staff from the Department of Community and Human Services. In total, King County hosted 28 conversations, nine focus groups, and four online surveys. The input received through this process informed the populations, result areas, and development of the Veterans, Seniors and Human Services Levy, Ordinance 18555 as placed on the ballot November 7, 2017.

Adam Schmid 206.477.9338 | adam.schmid@kingcounty.gov

King County Council – Ordinance 18555

On July 20, 2017 the King County Council approved Ordinance 18555, authorizing placement of the Veterans, Seniors and Human Services Levy (VSHSL) on the November 7, 2017 ballot. Planning for the VSHSL was conducted by the Department of Community and Human Services and informed by departmental research, stakeholder consultation and community feedback. The VSHSL was passed by King County voters on the November 2017 General Election.

Adam Schmid 206.477.9338 | adam.schmid@kingcounty.gov

ONGOING PROJECTS

Veterans, Seniors & Human Services Levy (VSHSL) - Community Engagement (2018)

Public participation is vital to the VSHSL Implementation Plan and the ongoing development of the VSHSL. King County residents can provide input through a series of online surveys (available in multiple languages) on the VSHSL Planning website: www.kingcounty.gov/VSHSLPlanning. This website will share updates and stories on the VSHSL, host surveys for your input, provide a calendar of public meetings, and publish reports throughout the VSHSL.

Adam Schmid 206.477.9338 | adam.schmid@kingcounty.gov

KING COUNTY DISTRICT COURTS

Court Services

Seattle, Shoreline, Renton, Burien, Kent, Redmond, Bellevue, Issaquah, Vashon Island

- Passports
- Domestic Violence
- Anti-Harassment
- Small Claims (up to \$5,000)
- Civil (under \$75,000)
- Opportunity to mitigate/defer/contest traffic infractions
- Relicensing
- Inquest Hearings
- Name Changes
- Vehicle Tow and Impound Hearings
- False Alarm Hearings
- Marriage Ceremonies
- Garnishments and other supplemental proceedings.
- Interpreters for Court Hearings
- Lien Foreclosure and forfeiture hearings
- Therapeutic Courts – Mental Health and Veterans Court
- Eliminate barriers to court access, prosecute accused individuals fairly and efficiently while managing and resolving court cases in a timely manner.
- Protecting the Public Safety by providing resources to hold convicted offenders accountable for their actions.

Call Center 206.205.9200

EXECUTIVE OFFICE

Executive Office - Performance, Strategy & Budget

Budget

King County uses a biennial (two-year) budget and the 2017-2018 Budget was adopted in November 2016. Several amendments have been made since but none has significantly affected County services. There has been considerable concern that federal budget changes would adversely affect certain County services, but such changes have been minor so far.

The County is beginning the process to develop the 2019-2020 Budget. Most funds are in good fiscal condition, but revenue limitations mean there is continuing stress on the General Fund, Roads Fund, and Public Health Fund. Reductions in services paid for from the General Fund and Public Health Fund are likely. The Roads Fund is stable but has far less money than is needed to maintain the existing roads system. PSB continues to support tax reform efforts to address these long-term financial problems.

Dwight Dively 206.263.9687 | dwight.dively@kingcounty.gov

Jonathan Swift 206.263.9699 | jonathan.swift@kingcounty.gov

Continuous Improvement

PSB continues to deploy the Lean continuous improvement methodology to transform the systems, tools, processes, and culture in County operations to drive greater efficiency and effectiveness in the services and products we provide to our communities.

Gary Kurihara 206.263.8026 | gary.kurihara@kingcounty.gov

Performance & Strategy

PSB continues to use proven management tools such as strategic planning, performance measurement, public performance reporting, visual management, and Executive performance reviews to align key County priorities, ensure accountability for strategic and operational performance, and to communicate to the public how the County is doing on delivering effective, efficient, and equitable services.

The Criminal Justice Strategy and Policy Section will continue to work on advancing systemic criminal justice reforms including alternatives to incarceration, reducing recidivism, and supporting the Executive's path to zero youth detention initiative.

Michael Jacobson 206.263.9622 | michael.jacobson@kingcounty.gov

King County Comprehensive Plan Implementation

PSB leads updates to the King County Comprehensive Plan, most recently in 2016. PSB will coordinate and monitor work on several Action Items included in Chapter 12: Implementation. A number of these efforts will include public engagement and outreach, including:

- Review of the Transfer of Development Rights Program (Dept. of Natural Resources and Parks),
- Initiation of an Alternative Housing Demonstration Project (i.e., small-home developments- Dept. of Community and Human Services),
- Development of a Bicycle Planning Network Report (Dept. of Transportation),
- Review of the Four to One Program (Office of Performance, Strategy and Budget), and
- Response to a recent court decision regarding permit-exempt wells in the rural area (Dept. of Permitting & Environmental Review).

Executive Office continued

- Additional information on these activities and other long-range planning activities will be shared publicly over the coming months as they develop and will be shared with people on the Comprehensive Plan Mailing list, which can be accessed at www.kingcounty.gov/compplan/.

Ivan Miller 206.263.8297 | ivan.miller@kingcounty.gov

Regional Planning

Annexation Activities

PSB works on transitioning urban unincorporated areas to city governance in accordance with state and regional growth management policies. Five large urban areas remain in urban unincorporated King County; these include North Highline/White Center (Seattle), Fairwood (Renton), West Hill/Skyway (Renton), East Renton (Renton) and East Federal Way (Federal Way). In addition, there are over 120 smaller urban islands/areas that remain unincorporated.

To support annexation of these areas, PSB will continue to work with willing city partners and residents to develop annexation timelines, work plans and public engagement efforts that provide information to communities regarding their governance options. Goals of this annexation work include:

- Preserve the quality of local services to urban unincorporated area communities by transferring governance responsibility to cities, which have more revenue options available for funding urban level local services than does the county
- Ensure the smooth transition of services from the county to the cities for citizens

Karen Meyering 206.263.9697 | karen.meyering@kingcounty.gov

EXECUTIVE SERVICES

RALS (Records & Licensing Services)

Community Service Centers (CSCs)

The King County Community Service Center (CSC) Program works to make it easier to do business with King County via sites located throughout the county. Services provided:

- Apply for a U.S. passport
- Apply for a Washington State marriage license
- Purchase copies of documents recorded with the King County Recorder's Office on or after August 1, 1991.
- Pay King County property taxes
- Purchase or renew a King County pet license
- Obtain information on other county services and programs such as: senior citizen property tax exemptions; assessment appeal forms; property assessment information; local fresh produce guides;

bus, bike, or ferry information; King County job listings and applications.

Because King County Community Service Centers offer services on behalf of several agencies, different guidelines or rules apply depending on the service. For additional information on any service, please check out the CSC website: <http://www.kingcounty.gov/depts/records-licensing/community-service-centers.aspx> and contact the site you intend to visit.

- Bothell
- Downtown Seattle - no passport services
- Issaquah - no passport services
- Kent
- Renton
- Shoreline - no passport services

<http://www.kingcounty.gov/operations/csc.aspx>

Jon Scherer, Recording Manager | 206.477.6644

E-911

Smart 911

King County launched Smart911 in September, 2012 - a supplemental data service that allows residents to Create a Safety Profile that can be seen by emergency responders when you call 9-1-1.

Enhanced 911 Program Office

20811 84th Ave S, Suite 105

Kent, WA 98032

206.477.4910

OEM (Office of Emergency Management)

Emergency Management

Emergency preparation and response

A number of hazards (from earthquakes to major winter storms) threaten Western Washington. There are specific things residents can do to stay safe and protect their property during these sometimes devastating conditions. King County Emergency Management provides resources, tips, and download-able checklists (in multiple languages). To talk to someone about what you and/or your community can do to prepare for emergencies, please contact KCOEM using the information below.

KCOEM also administers regional public alerts to help residents stay informed about potential hazards and threats that impact their area. Sign-up is free: www.kingcounty.gov/ALERT

King County Office of Emergency Management

3511 NE 2nd Street | Renton, WA 98056

Main Phone: 206.296.3830 | Toll Free: 800.523.5044

Fax: 206.205.4056 | ecc.kc@kingcounty.gov

METRO TRANSIT

Metro Transit Service

North Kirkland – currently has eight routes with Metro service and two Sound Transit routes, connecting ▶

Metro Transit continued

Kirkland with Woodinville, Bellevue, Bothell, Kinggate, Brickyard Park-and-Ride, Shoreline, Renton, Everett, and Lynnwood.

Route 236: 119th Ave NE; Monday-Sunday, 30 minute peak frequency, 30.60 minute off-peak frequency, 60 minute night frequency

Route 237: Brickyard Park-and-Ride; Monday-Friday, 3 a.m. trips, 2 p.m. trips

Route 238: Juanita-Woodinville Road; Monday-Sunday, 30 minute peak frequency, 30.60 minute off-peak frequency

Route 252: 119th Ave NE; Monday-Friday, 7 a.m. trips, 8 p.m. trips

Route 255: 124th Ave NE; Monday-Sunday, 30 minute frequency

Route 257: Juanita-Woodinville Road; Monday-Sunday, 6 a.m. trips, 6 p.m. trips

Route 311: Brickyard Park-and-Ride; Monday-Friday, 13 daily trips, 30 minute peak frequency

Route 342: Brickyard Park-and-Ride; Monday-Friday, 5 a.m. trips, 4 p.m. trips

Route 532: Brickyard Park-and-Ride; Monday-Friday, 10.30 minute peak frequency

Route 535: Brickyard Park-and-Ride; Monday-Saturday, 30 minute peak, 30-60 minute off-peak, 60 minute night frequency

Jeff Lee 206.477.5870 | jeff.lee@kingcounty.gov

English Hills – currently has one route, connecting English Hills with Kirkland and Redmond

Route 931: NE 128th St; Monday-Friday, 30 minute peak frequency

Jeff Lee 206.477.5870 | jeff.lee@kingcounty.gov

Eastgate – currently has three routes, providing connections to Issaquah, Bellevue, Eastgate, and the University District.

Route 241: SE Allen Road; Monday-Sunday, 30 minute peak, 30-60 minute off-peak, 60 minute night frequency;

Route 246: 150th Ave SE; Monday-Friday, 30 minute peak, 60 minute off-peak frequency;

Route 271: SE Newport Way; Monday-Sunday, 30 minute peak and off-peak, 60 minute night frequency

Jeff Lee 206.477.5870 | jeff.lee@kingcounty.gov

East Renton – currently has two routes – one peak commuter route connecting to downtown Seattle via I-405 and I-90 and a DART route providing local service to/from the Renton Transit Center.

Route 111: SE 128th St/Maplewood; Monday-Friday, 7 morning & 7 afternoon peak commuter trips. In March 2017, one morning and one afternoon 111 trips that formerly started/ended within Renton were extended to operate the entire route through Maplewood/East Renton, so that all trips would provide a service through this area

Route 908: Maplewood-Renton local DART; Monday-Saturday, 60 minute peak and off-peak frequency

Maggie.McGehee 206.263.7973 Maggie.McGehee@kingcounty.gov

Fairwood – currently has three routes, connecting to downtown Seattle, Renton, and Southcenter.

Route 102: SE Petrovitsky, SE Fairwood Blvd; Monday-Friday, 7 morning & 7 afternoon peak commuter trips. In March 2017, a new morning 102 trip was added to provide additional frequency and capacity

The City of Renton requested King County Metro relocate layover from the Renton Transit Center to the South Renton Park & Ride, to support their Civic Core Vision process. In response, Metro will administratively revise Route 101 to layover at the South Renton Park & Ride instead of the Renton Transit Center in March 2018. Currently, Route 101 begins and ends at the Renton Transit Center, traveling to the South Renton Park & Ride en route to and from downtown Seattle. The revision reverses the route pathway so that it starts and ends at the South Renton Park & Ride, and serves the Renton Transit Center en route to Seattle. This revision therefore creates new direct service on Route 101 between the Renton Transit Center and downtown Seattle, offering an improvement for passengers traveling via the Renton Transit Center.

At the same time, this change creates a more roundabout experience for Route 101 passengers traveling between the South Renton Park & Ride and Seattle. Route 102 operates during peak periods only, travels the more direct pathway between the South Renton Park & Ride and Seattle, and does not serve the Renton Transit Center. In order to preserve capacity for passengers preferring the more direct route between the Park & Ride and Seattle, Metro proposes to reallocate eight trips from Route 101 to Route 102 during the peak period, while maintaining service at least every 15 minutes on Route 101 to and from the Renton Transit Center. These changes will allow us to meet the City of Renton's vision as well as the customer demand in the corridor. This change will occur in March 2018.

Route 148: 140th Ave SE; Monday-Sunday, 30 minute peak, 30.60 minute off-peak, 60 minute night frequency

Route 906: SE Petrovitsky, SE Fairwood Blvd; Monday-Saturday, 60 minute peak and off-peak frequency

Maggie.McGehee 206.263.7973 Maggie.McGehee@kingcounty.gov

West Hill – currently has four routes connecting to Renton, Rainier Beach and downtown Seattle.

Route 101: MLK Jr Way; Monday-Sunday, 7.15 minute peak, 30 minute off-peak and night; In March 2016, one new weekday morning and two new weekday afternoon 101 trips were added along with new earlier service on Saturday and Sunday, while in March 2017, two new weekday morning 101 trips were added;

Route 102: MLK JR Way; Monday-Friday, Monday-Friday, 7 morning & 7 afternoon peak trips; In March ▶

Metro Transit continued

2017, a new 102 trip was added to provide additional frequency and capacity;

Route 106: Renton Ave S; Monday-Sunday, 15 minutes weekdays/Saturday and 30 minutes night/Sunday. In September 2016, as part of the SE Seattle service restructure, the 106 was revised to operate through the Rainier Valley to/from the International District with weekday and Saturday service improved to operate every 15 minutes;

The City of Renton requested King County Metro relocate layover from the Renton Transit Center to the South Renton Park & Ride, to support their Civic Core Vision process. In response, Metro will administratively revise Route 101 to layover at the South Renton Park & Ride instead of the Renton Transit Center in March 2018. Currently, Route 101 begins and ends at the Renton Transit Center, traveling to the South Renton Park & Ride en route to and from downtown Seattle. The revision reverses the route pathway so that it starts and ends at the South Renton Park & Ride, and serves the Renton Transit Center en route to Seattle. This revision therefore creates new direct service on Route 101 between the Renton Transit Center and downtown Seattle, offering an improvement for passengers traveling via the Renton Transit Center.

At the same time, this change creates a more round-about experience for Route 101 passengers traveling between the South Renton Park & Ride and Seattle. Route 102 operates during peak periods only, travels the more direct pathway between the South Renton Park & Ride and Seattle, and does not serve the Renton Transit Center. In order to preserve capacity for passengers preferring the more direct route between the Park & Ride and Seattle, Metro proposes to reallocate eight trips from Route 101 to Route 102 during the peak period, while maintaining service at least every 15 minutes on Route 101 to and from the Renton Transit Center. These changes will allow us to meet the City of Renton's vision as well as the customer demand in the corridor. This change will occur in March 2018.

Route 107: Lakeridge/West Hill; Monday-Sunday; 15.30 minute peak, 30 minute off-peak and night. In September 2016, as part of the SE Seattle service restructure, the 107 was extended beyond Rainier Beach to Beacon Hill and Georgetown along with additional weekday peak and evening service
Maggie.McGehee 206.263.7973 Maggie.McGehee@kingcounty.gov

North Highline – this area is served by ten routes connecting to downtown Seattle, Shorewood, Burien, Highline Community College, Tukwila, and Admiral.
Route 22: 26th Ave SW, SW 106th St, Monday-Sunday,

60 minute peak and off-peak;

Route 60: SW Roxbury St; Monday-Sunday; 20 minute peak, 20.30 minute off-peak, 30 minute night;

Route 113: Shorewood, SW Roxbury St; Monday-Friday, 5 a.m. trips, 4 p.m. trips;

Route 120: Ambaum Blvd SW; Monday-Sunday, 7.15 minute peak, 15.30 minute off-peak, 30.60 minute night. In March 2016, two afternoon peak and three evening round trips were added on the 120 to provide additional capacity and improve service frequency. In September 2017, an additional night-owl trip was added to Route 120 to provide improved late-night transit service.

Metro is also working to transform Route 120 into the new RapidRide H Line. When launched in 2020, the H Line will come more often and be more reliable (on-time), and will give riders in Burien and White Center frequent connections to several West Seattle neighborhoods, downtown Seattle along Third Avenue, other buses, and light rail.

Metro and the City of Seattle are reaching out to communities along this corridor to identify needs and priorities for the new service. We'll gather community and rider input on any changes we consider.

Routes 121/122/123: SR.509/SW 128th St, Military Rd S; Monday-Friday: 10-20 minute peak service. In March 2017, two new morning and one new afternoon 121 trips were added to improve service frequency and provide additional capacity;

Route 128: 8th Ave SW, S 120th St, Military Rd S; Monday-Sunday, 30 minute frequency;

Route 131: 1st Ave S; Monday-Sunday, 20.30 minute peak, 30 minute off-peak, 60 minute night;

Route 132: Des Moines Mem Dr S.; Monday-Sunday, 20.30 minute peak, 30 minute off-peak, 60 minute night
Maggie.McGehee 206.263.7973 Maggie.McGehee@kingcounty.gov

East Federal Way (South) – currently has two Pierce Transit routes, connecting to Milton, and Federal Way
Route 402: Enchanted Pkwy; Monday-Sunday; 30 minute peak and 60 minute off-peak;

Route 501: 28th Ave S; Monday-Sunday; 60 minute peak and off-peak

Maggie.McGehee 206.263.7973 Maggie.McGehee@kingcounty.gov

Community Connections

The King County Council approved \$15 million for the Community Connections program in the 2017-2018 biennium budget. Community Connections is the new name (as of March, 2017) for what was originally known as the Alternative Services Demonstration Program. It is a four-year (2015-2018) demonstration program in which Metro works with local governments and community partners to develop innovative and cost-effi- ▶

Metro Transit continued

cient transportation solutions in areas of King County that don't have the infrastructure, density, or land use to support regular, fixed-route bus service. The program aims to develop, test, and evaluate new transportation services that take advantage of innovative ideas, unique partnerships, or emerging technology.

As of December 2017, there are no currently active Community Connections projects in this CSA. However, community councils and groups supporting this CSA are eligible to submit a pilot project application during the 2018 process.

Cathy Snow 206.477.5760 | cathleen.snow@kingcounty.gov

METRO CONNECTS Long-Range Plan

King County Council adopted Metro's long-range plan, METRO CONNECTS, in January 2017. The Plan presents a shared vision for a future public transportation system that gets people where they want to go and helps our region thrive. It describes an integrated network of transportation options in 2025 and 2040, the facilities and technology needed to support those services, and the financial requirements for building the system. It was developed in close coordination with Sound Transit and other transportation agencies. More information is available online at kcmetrovision.org.

Graydon Newman 206.477.5862 | graydon.newman@kingcounty.gov

METRO CONNECTS Development Program

The METRO CONNECTS Development Program (MCDP) is a midrange planning effort that outlines the timing and substance of Metro's efforts to achieve the METRO CONNECTS vision for service and infrastructure in 2025. Major elements of this program include creating a schedule that shows where, how much, and when Metro will invest in the service growth and capital improvements that METRO CONNECTS envisions; and establishing a regular forum to engage and coordinate with cities and stakeholders on the implementation of METRO CONNECTS through the Program's Technical Advisory Committee (TAC). The MCDP is planned to be a rolling program that will inform decision-making in 6-10-year increments over each successive biennium.

King County transmitted materials for approval to King County Council in October 2017, and anticipates approval in early 2018. Metro's planning work is ongoing to develop more detail on projects needed to develop the 2025 service network.

Graydon Newman 206.477.5862 | graydon.newman@kingcounty.gov

Metro Transit moving to a new level in King County government

In September 2017, King County Executive Dow

~~Constantine announced his proposal to make Metro~~
Transit its own department within King County government—no longer a division of the Department of Transportation as it is now. Why? Demand for public transportation is rising, and our region is counting on Metro to deliver more and better transit services. The agency will be in a stronger position to deliver on this expectation as a stand-alone department.

Metro will be making internal organizational changes and developing a new budget with the goal of becoming a department in early 2019. Metro riders will not be affected by the agency's transition to department status. Read the Executive's press release [here](#).

Fleet Administration

On-going internal support services

Fleet Administration is an internal customer service agency that provides cost effective vehicle services, parts, materials and construction supplies. Our goal is to manage a safe responsive fleet of vehicles and equipment, employee access to materials and supplies, in order to respond to the needs of King County citizens.

Jennifer Lindwall 206.477.3883 | jennifer.lindwall@kingcounty.gov

Fleet provides King County personal property asset management services including mandatory annual inventory report, warehousing and dispersal of surplus items. Our goal is to maintain accurate procedures for the accountability of King County personal property inventory.

Russ Johnson 206.477.3889 | russ.johnson@kingcounty.gov

NATURAL RESOURCES & PARKS

PARKS

Future Funding for King County Parks

The King County Parks, Trails, and Open Space Replacement Levy provides the majority of funding for the King County Parks system. This six-year voter-approved levy, which passed with over 70% support, began in 2014 and will be expiring in 2019. Examining options for future funding will be a major work item for King County Parks staff in 2018.

<https://kingcountyparks.org/2017/03/18/steady-as-she-goes/>

Doug Hodson 206.477.5918 | doug.hodson@kingcounty.gov

Parks Customer Service and Outreach

King County Parks has launched a new online reservation system for camping, picnic shelters, and other park amenities throughout the County. Parks is piloting a new mobile and online tool called SeeClickFix for park and trail visitors to report issues and make suggestions.

Matthew Perkins 206.477.4527 | matthew.perkins@kingcounty.gov

Steve Cox Synthetic Turf Field

King County Parks is converting the current under-utilized ballfields to a multi-use synthetic turf field. The project also includes installing lighting and ►

Natural Resources & Parks continued

a walking path around the field. The project is in the design and permitting phase, and construction is anticipated to begin in summer 2018.

Tri Ong 206.477.3591 | tri.ong@kingcounty.gov

Green River Trail North Extension

King County Parks is currently evaluating the feasibility of several design options to extend the existing Green River Trail north from Cecil Moses Park along W Marginal Way Pl to the Seattle city limits near South Park. To assist with this evaluation several studies were completed in 2017 covering the disciplines of Critical Areas, Geotechnical, Hazardous Materials, and Traffic. Outreach and coordination with agency stakeholders, non-profits, and adjacent business owners in 2017 has also aided in the evaluation. Parks hopes to make a decision on a feasible project option to bring to the general public for review in Q1 2018. It is estimated that construction could potentially begin 2020.

Lindsey Miller 206.477.3549 | lindsey.miller@kingcounty.gov

Dick Thurnau Memorial Park Play Area Rehabilitation

King County Parks is finishing final design for the replacement of aging playground equipment with all new equipment and rubber tile safety surfacing. The play area is scheduled to be closed starting in April or May 2018. The play area will be closed for approximately 3 months. King County Parks conducts annual safety inspections and removes, replaces and/or modifies play areas as needed for safety and life cycle maintenance. The rehabilitation program is funded in part by the voter approved 2014-19 King County Parks, Trail and Space Replacement Levy.

Lindsey Miller 206.477.3549 | lindsey.miller@kingcounty.gov

Skyway Park Planning

King County Parks is seeking to enhance existing facilities, add new facilities and improve access and safety. The project includes rehabilitating, relocating and expanding the play area, installing a new prefabricated mini soccer arena, and adding adult fitness equipment, a paved walking loop (north end of park), an expanded picnic area, more security lighting, new fencing, improved access, and completing general repairs. The timeline for the Skyway Water and Sewer District project in the park is still unknown, and many of the improvements have been designed so that they can be completed independent of the utility project. Final design and permitting will occur in Q1, Q2, and Q3 2018. Construction will likely occur in phases starting in Q3 2018 and continuing into 2019. This project is being funded by the 2014-19 King County Parks, Trails, and Open Space Replacement Levy, the Youth and Amateur Sports Fund, and the Land and Water Conservation Fund – Outdoor Recreation Legacy Program. A demonstration community garden at Sky-

way Park will be installed with the King Conservation District. This project will be designed, permitted, and installed in 2018.

Lindsey Miller 206.477.3549 | lindsey.miller@kingcounty.gov

Butch Lovelace 206.477.4577 | butch.lovelace@kingcounty.gov

COMPLETED PROJECTS

Evergreen Pool

Whitewater Aquatics, a Community Partnerships and Grants Program partner with King County Parks, received a grant to support renovation of the Evergreen Pool. Parks' funding helped pay for replacement of the heating system in the locker rooms.

Scott Thomas 206.477.4586 | scott.thomas@kingcounty.gov

Volunteer Program

694 volunteers gave 2,293 hours at volunteer events – tasks included trail maintenance, planting native trees and shrubs, removing invasive plants and litter pick up. Sites included: Camelot Park, Cecil Moses Park, Lake Geneva Park, Maplewood Heights Park, North Shorewood Park, Petrovitsky Park, Sierra Heights Park, Skyway Park, Soos Creek Park, Steve Cox Memorial Park, Thurnau Memorial Park, White Center Heights Park. Key partnerships included: City Year, Seattle Sounders, Starbucks, Cascade Middle School Prevention Team, Lakeside School, CDM Smith, Boy Scouts Troop 330, Doxa Community Church, Seattle Pacific University, Amazon, Boeing, Skyway Solutions, West Hill Community Association, Campbell Hill Elementary School, Sierra Club, Audubon, Osborne Consulting and Homeschool Squad.

Laurie Clinton 206.477.6113 | laurie.clinton@kingcounty.gov

ON-GOING PROJECTS

On-going Maintenance and Easement Monitoring

Maintenance of many parks takes place in this area, including Steve Cox Memorial Park, Dick Thurnau Memorial Park, White Center Heights Park, Hamm Creek Natural Area (N.A.), White Center Pond N.A., North Shorewood Park, Skyway Park, Bryn Mawr Park, May Creek Park, Maplewood Heights Park, Petrovitsky Park, Lake Geneva Park, Five Mile Lake Park, South County Ballfields, and other park facilities within the service area. Community outreach with user groups within service area is also a focus for King County Parks.

Don Harig 206.477.6140 | don.harig@kingcounty.gov

White Center Teen Program at Steve Cox Memorial Park

The White Center Teen Program serves youth aged 12-19 from the White Center area of unincorporated King County by providing free, year-round recreational, educational, and enrichment programming in both structured and drop-in formats. WCTP programming focuses on activities that develop social, life, and leadership skills, offer youth opportunities to contribute to the community, enrich academic experiences, and ▶

Natural Resources & Parks continued

provide quality time with caring adult role models.

Darlene Sellers 206.477.2104 | darlene.sellers@kingcounty.gov

Tiny Trees Preschool at Five Mile Park

Tiny Trees Preschool, a Community Partnerships and Grants Program partner with King County Parks, will begin offering outdoor preschool at Five Mile Park for the 2018-2019 school year.

Scott Thomas 206.477.4586 | scott.thomas@kingcounty.gov

Volunteer Program Events

Volunteers that participate in the King County Parks volunteer program provide more than 55,000 hours of service in our parks, trails and natural areas each year. From building and repairing backcountry trails to removing invasive plants and planting native plants to promoting recycling and composting at summer concerts these volunteers are a vital part of the maintenance and improvement of the system. These volunteers play an important role in stewarding our 28,000 acres of open space. Sign-up for the volunteer newsletter for a listing of scheduled events in the area at: Volunteer - King County Want to know what it's like to volunteer with us? Check out our new video: Volunteer with King County Parks on Vimeo If you, your group or business is interested in doing a volunteer project at your favorite King County Park site, we can work with you to plan a custom event. Please contact Volunteer Program Manager Laurie Clinton for custom events and any additional volunteer service opportunities in King County Parks.

Laurie Clinton 206.477.6113 | laurie.clinton@kingcounty.gov

Youth and Amateur Sports Grant Program

King County Parks launched a new grant program in 2017. Youth and Amateur Sports Grants (YASG) support fit and healthy communities by investing in programs and capital projects that reduce barriers to access physical activity. King County Parks hosted information sessions in October and the application deadline was in November. Applications will be evaluated and awarded in January 2018. To learn more about the program visit the website at <http://www.kingcounty.gov/services/parks-recreation/parks/get-involved/partnerships-and-grants/yasg.aspx>

Butch Lovelace 206.477.4577 | butch.lovelace@kingcounty.gov

Trailhead Direct

King County Parks and King County Metro launched the pilot season of Trailhead Direct. Trailhead Direct wrapped up its inaugural season on Oct. 14-15. Operating since Aug. 5 from the Issaquah Transit Center and averaging about 40 riders per day, Trailhead Direct connected hikers to more than 5,000 acres of protected lands with 150 miles of hiking trails in the Issaquah Alps. Stops included: Margaret's Way trailhead at Cougar-Squak Corridor Park, the Poo Poo Point trailhead on West Tiger Mountain, East Sunset Way Trailhead

in Issaquah, Issaquah Highlands Park-and-Ride and Issaquah Transit Center. The service will continue in spring of 2018. To learn more visit: <https://kingcountyparks.org/2017/07/12/trailhead-direct-park-ride-hike/>

Ryan Dotson 206.477.4562 | ryan.dotson@kingcounty.gov

Family Movie Nights

Join King County Parks in summer 2018 for a special outdoor movie night in your Big Backyard. This is a free event so bring your low-backed chairs, blankets, snacks, and enjoy a relaxed evening in the park. The movie will be projected onto a 40-foot tall inflatable movie screen so invite your friends, teammates and family- we've got space! Dates and locations to be decided.

Elizabeth Jessup 206.263.0584 | elizabeth.jessup@kingcounty.gov

Solid Waste Division

Time limited 2017 projects that are scheduled for work and completion in 2017 or 2018

Comprehensive Solid Waste Management Plan Update

The Solid Waste Division worked with its city partners to prepare a draft plan for public review and comment that broadly outlines how King County will manage garbage for the next 20 years. Topics covered in the plan range from waste prevention, recycling and solid waste collection, to transfer and disposal of waste and how these services will be financed. Three key topics addressed in the plan:

1. how will King County dispose of its garbage over the long term,
2. what type of recycling and solid waste transfer services should be provided in northeast King County, and
3. how will we increase recycling to reach a 70% recycling goal. The 60-day public comment on the draft plan ended on March 8, 2018. There will be additional opportunities for public input as the draft Plan undergoes a review and adoption process by the King County Council and the cities starting in mid to late 2018. Check the King County Council website or your city's website for more information.

Website: <http://kingcounty.gov/depts/dnrp/solid-waste/about/planning/comp-plan.aspx>

Beth Humphreys 206.477.5264 | beth.humphreys@kingcounty.gov

Transfer Station

Factoria Transfer Station Replacement Project – (CIP Project) construction of the new Factoria Recycling and Transfer facility was substantially completed in August 2017. The new transfer building, with a new flat floor configuration and garbage compaction capabilities opened in May 2016. Recycling and household hazardous waste services were available in October 2017. Website: <http://your.kingcounty.gov/solidwaste/facilities/factoria-replacement-project.asp>

Doug Chin 206.477.5217 | doug.chin@kingcounty.gov

Self-haul Recycling Separation Requirement - Beginning in January 2018, customers will be required to separate yard waste, clean wood, cardboard, and scrap metal from their garbage at facilities where those materials are accepted for recycling.

Dale Alekel 206.477.5267 | dale.alekel@kingcounty.gov

Will involve community engagement

South County Recycling and Transfer Station Project – (CIP Project) Completed a Final Environmental Impact Statement that evaluated sites under consideration on which to build a new facility that would replace the existing Algona Transfer Station. Selection of a site for the new facility will be made in 2017, and facility design work will begin. Website: <http://your.kingcounty.gov/solidwaste/facilities/algona/index.asp>

Tom Creegan 206.477.5218 | tom.creegan@kingcounty.gov

Landfill Operations and Neighbor Outreach

- Landfill Gas Pipeline Upgrade – Install a redundant landfill gas conveyance pipeline from the landfill's North Flare Station to Bio Energy Washington's landfill gas-to-energy facility that generates clean, renewable natural gas from landfill gas.

Tien Pham 206.477.5232 | tien.pham@kingcounty.gov

- Area 7 Closure and Area 8 Development – Issued Notice to Proceed to Scarsella Bros in June 2017 for the closure of Cedar Hills Landfill Area 7 and development of new Area 8 within the existing footprint of the landfill. The new Area 8 is scheduled to be ready to receive waste in early 2019.

Margaret Bay 206.263.5841 | margaret.bay@kingcounty.gov

- Area 7 Stage 3 and Stage 4 Closure – Landfill areas are closed in stages. Staged closures of the area where garbage is currently being buried at the landfill, Area 7, will include installation of final cover on the west slope and temporary cover on the south slope. Stage 3 will occur in 2017 and Stage 4 in 2018.

Margaret Bay 206.263.5841 | mizan.rahman@kingcounty.gov

Transfer Stations

- Self-haul Recycling Separation Requirement - Beginning in January 2018, customers will be required to separate yard waste, clean wood, cardboard, and scrap metal from their garbage at facilities where those materials are accepted for recycling.

Dale Alekel 206.477.5267 | dale.alekel@kingcounty.gov

ON-GOING PROGRAMS

Waste Reduction and Recycling Outreach and Education

Includes programs and services such as:

- Recycle More/Recicla Mas – education and outreach to single-family residents on how to recycle

more materials in curbside programs. Includes targeted outreach to Spanishspeaking community. Websites: <http://your.kingcounty.gov/solidwaste/garbage-recycling/recycle-more.asp> and <http://your.kingcounty.gov/solidwaste/recicla-mas/index.asp>

- K-12 Schools program – assembly programs, classroom workshops and assistance to student Green Teams. Website: <http://your.kingcounty.gov/solidwaste/second-aryschool/index.asp>
- Green Schools Program - assists private and public K-12 schools and school districts to initiate and improve waste reduction, recycling, conservation, and pollution prevention practices and recognize high achievement. Website: <http://your.kingcounty.gov/solidwaste/greenschools/index.asp>
- Recycling Collection Events - King County funding provided to cities and unincorporated areas to offer events for residents and businesses to recycle select materials. Website: <http://your.kingcounty.gov/solidwaste/garbage-recycling/events.asp>
- Algona, Auburn, Black Diamond, Covington, Enumclaw, Maple Valley, and Pacific Recycling Collection Events allow neighboring unincorporated area residents
- Brownfields Program - provides assistance to qualified private individuals and businesses, nonprofit organizations, and municipalities within King County to assess and clean up contaminated sites, or Brownfields. Website: <http://your.kingcounty.gov/solidwaste/brownfields/index.asp>
- EcoConsumer – Offering free community repair events in Auburn, Federal Way and other communities. The EcoConsumer public outreach program also provides information and resources about waste reduction and other environmental concerns to the public and media through TV and radio segments, articles, presentations, social media and more. Website shortcut: www.KCecoconsumer.com

Tom Watson 206.477.4481 | tom.watson@kingcounty.gov

- Green Schools Program - assists more than 200 private and public K-12 schools in a dozen school districts to initiate and improve waste reduction, recycling, energy and water conservation, pollution prevention and other conservation practices. Recognizes schools and school districts that complete "Best Practice Guides." Website: <http://your.kingcounty.gov/solidwaste/greenschools/index.asp>
- LinkUp – works with businesses, agencies and other organizations in the Puget Sound area to expand markets for selected recyclable and reusable materials. Website: <http://your.kingcounty.gov/solidwaste/linkup/index.asp>
- Customer Service - Information/education provided to customers/public on SWD services via web pages and phone support. Website: <http://your.kingcounty.gov/solidwaste/index.asp>

Natural Resources & Parks continued

Solid Waste Division Customer Service 206.477.4466 | TTY Relay: 711

Transfer Station

- The Enumclaw Recycling and Transfer Station is a facility where residents and businesses bring their waste and recyclable materials for disposal. Website: <http://your.kingcounty.gov/solidwaste/facilities/enumclaw-transfer.asp?ID=339>
- The Algonia Transfer Station is a facility where residents and businesses bring their waste for disposal. There are no recycling services available at the Algonia facility. Website: <https://kingcounty.gov/depts/dnrp/solid-waste/facilities/transfer/algonia-transfer.aspx>

Solid Waste Division Customer Service 206.477.4466 | TTY Relay: 711

Household hazardous waste collection

- Offers free collection of hazardous waste from households and qualifying businesses at two fixed collection sites and the travelling Wastemobile. These include:
 - Factoria Household Hazardous Waste Drop Off Service
 - Auburn Wastemobile at Outlet Collection
 - Covington Wastemobile Events
 - Enumclaw Wastemobile Events

Websites: HHW Facility location and hours: <http://your.kingcounty.gov/solidwaste/facilities/hazwaste.asp>

Wastemobile schedule: <http://www.lhwmp.org/home/HHW/wastemobile.aspx>

Household Hazards Line: 206.296.4692

Litter and Illegal Dumping

Includes several programs:

- Community Litter Cleanup - Coordinate cleanup of illegal dumpsites and litter on public property.

Morgan John 206.477.4624 | morgan.john@kingcounty.gov

Hotline: 206.296.SITE (7483)

- Illegal Dumping Hotline – maintains hotline for citizens to report illegal dumping, directs those complaints to the appropriate agency for follow up

Morgan John 206.477.4624 | morgan.john@kingcounty.gov

Hotline: 206.296.SITE (7483)

- Junk Vehicles – provides information and facilitates process for removing abandoned vehicles from private property

Mary Impson 206.296.4437 | mary.impson@kingcounty.gov

- Community Cleanup Assistance Program – financial assistance (waived tip fees) to private property owners who are either low income or whose property has been dumped on

Website: <http://your.kingcounty.gov/solidwaste/cleanup/index.asp>

Terri Barker 206.477.5214 | terri.baker@kingcounty.gov

Landfill Operations (active and closed landfills)

Closed and Custodial Landfill Maintenance and Monitoring - maintain and monitor groundwater, surface water, wastewater, and landfill gas at closed landfills, including:

- Enumclaw Closed Landfill

Website: <http://your.kingcounty.gov/solidwaste/facilities/closed-landfills.asp>

Anne Holmes 206.477.5223 | anne.holmes@kingcounty.gov

WATER & LAND RESOURCES DIVISION

Hicklin Lake Floating Islands Water Quality

Improvement Project

King County continued to monitor and track water quality in Hicklin Lake in 2017. Toxic algal blooms and pathogens remain a concern in Hicklin Lake. The County has developed plans to expand monitoring to inform future management decisions. The County has already installed several gages in the developed areas draining to Hicklin Lake to track dry- and wet-weather flows. The County has also begun taking water quality samples near these gages in order to estimate the pollutant loadings to the lake. Expanded monitoring in Hicklin Lake is planned for 2018 and 2019. This monitoring data will be used to generate recommendations for actions and strategies to improve Hicklin Lake water quality. <http://green2.kingcounty.gov/ScienceLibrary/Document.aspx?ArticleID=450>

Tim Clark 206.477.1306 | timothy.clark@kingcounty.gov

Fairwood 11 Pipe Phase 2

This project is located in the vicinity of SE 164th St and 132nd Pl SE. The project intends to repair a pipe from a regional detention facility that conveys Molasses Creek. Construction expected in 2021. The large storm events in January and February of 2017 formed a sinkhole around the manhole of the facility and damaged a portion of the pipe. King County filled in the sinkhole and replaced a segment of the pipe in 2017.

Rachel Berryessa 206.477.4644 | rachel.berryessa@kingcounty.gov

Fairwood 4 Stormwater Improvement

This project is located in the vicinity of SE 163rd St and 134th Ave SE. The project intends to repair a 100 foot pipe segment that conveys Molasses Creek. Completed construction in 2017.

Rachel Berryessa 206.477.4644 | rachel.berryessa@kingcounty.gov

ON-GOING PROJECTS

Land Conservation Initiative

The King County Land Conservation Initiative is a bold effort underway to “finish the job” on land conservation in King County. Across the County, King County and city partners have identified 62,000 acres of the highest priority conservation lands in five 5 separate categories: (1) urban parks/greenspace, (2) regional trails, (3) river & natural lands, (4) farmlands, and (5) forestlands. The Initiative is a regional effort to permanently protect conservation land to provide benefits to today's residents and generations to come. ►

Natural Resources & Parks continued

The effort is county-wide – from the edge of the Puget Sound, east through urban areas and rural communities, to the farm fields and river valleys at the foot of the Cascade Mountains. In the Snoqualmie Watershed, the County and city partners have identified more than 25,000 acres of high conservation value land. Learn more at <http://kingcounty.gov/services/environment/water-and-land/land-conservation.aspx>.

Michael Murphy 206.477.4781 | michael.murphy@kingcounty.gov

Green Shorelines

Information and guidance for lakeshore homeowners to understand and implement Green Shoreline practices and green dock designs to benefit salmon and water quality. <http://www.govlink.org/watersheds/8/action/GreenShorelines/default.aspx>

Jason Mulvihill-Kuntz 206.477.4780 | jason.mulvihill-kuntz@kingcounty.gov

Salmon SEEs

Spot spawning salmon in the Lake Washington/Cedar/Sammamish and Green-Duwamish Watersheds each fall. Some sites and times have volunteer naturalists on hand; others are self-guided. Check the website for details. September 2017-January 2018 depending on the site. <http://www.govlink.org/watersheds/8/action/salmon-seeson/default.aspx>

Jason Mulvihill-Kuntz 206.477.4780 | jason.mulvihill-kuntz@kingcounty.gov

Drainage and Water Quality Complaint Investigations

Respond to citizen concerns regarding stormwater runoff and surface water quality problems on both residential and commercial property in the unincorporated areas of King County.

<http://www.kingcounty.gov/environment/waterandland/stormwater/problem-investigation-line.aspx>

Drainage Complaint Line 206.477.4811

Minimize Stormwater Pollution

Stormwater runoff comes from small, individual sources in all parts of the watershed. It is a problem that residents can change by stopping small, individual activities that cause pollution and result in large-scale pollution.

<http://www.kingcounty.gov/environment/waterandland/stormwater/introduction/stormwater-runoff.aspx>

Neighborhood Drainage Assistance Program (NDAP)

NDAP addresses private flooding, erosion, and sedimentation problems. The NDAP can design and fund capital improvement projects, repair existing drainage systems, and provide technical assistance for questions about construction, maintenance, permits, and storm drainage. <http://www.kingcounty.gov/environment/waterandland/stormwater/neighborhood-drainage-assistance.aspx>

Brian Sleight 206.477.4826 | brian.sleight@kingcounty.gov

Agricultural Drainage Assistance Program (ADAP)

ADAP helps agricultural property owners improve

drainage of their fields by providing both technical and financial assistance.

<http://www.kingcounty.gov/environment/waterandland/stormwater/neighborhood-drainage-assistance.aspx>

Brian Sleight 206.477.4826 | brian.sleight@kingcounty.gov

Livestock Program

Support the raising and keeping of livestock to minimize adverse impacts on the environment, particularly on water quality and salmon habitat. This includes help developing a workable solution for handling livestock waste.

<http://www.kingcounty.gov/environment/wlr/sections-programs/rural-regional-services-section/agriculture-program/livestock-programs.aspx>

Rick Reinlasoder 206.477.4810 | rick.reinlasoder@kingcounty.gov

Farmland Preservation Program

The County purchases development rights from agricultural landowner's to permanently protect the land for future farming. It is a voluntary program.

<http://www.kingcounty.gov/environment/wlr/sections-programs/rural-regional-services-section/agriculture-program/farmland-preservation-program.aspx>

Ted Sullivan 206.477.4834 | ted.sullivan@kingcounty.gov

Forestry Program

The County offers education, technical assistance, and economic incentives aimed at retaining forest land for its environmental, social, and economic benefits. <http://www.kingcounty.gov/environment/wlr/sections-programs/rural-regional-services-section/forestry-program.aspx>

Bill Loeber 206.477.4755 | bill.loeber@kingcounty.gov

Wendy Sammarco 206.263.6916 | wsammarco@kingcounty.gov

Current Use Taxation

The Public Benefit Rating System and the Timber Land programs provide incentives to encourage landowners to voluntarily conserve and protect land resources, open space, and timber. In return for preserving and managing resources, the land is assessed at a value consistent with its "current use" rather than the "highest and best use." The reduction in assessed land value is greater than 50 percent and as much as 90 percent for the portion of the land participating in the program. <http://kingcounty.gov/incentives>

Bill Bernstein 206.477.4643 | bill.bernstein@kingcounty.gov

Megan Kim 206.477.4788 | megan.kim@kingcounty.gov

Transfer of Development Rights

The TDR program is a voluntary, incentive-based, and market-driven approach to preserve land and steer development growth away from rural and resource lands into King County's Urban Area. Rural landowners realize economic return through the sale of development rights to private developers who are able to build more compactly in designated unincorporated urban areas and partner cities.

<http://www.kingcounty.gov/environment/stewardship/sustainable-building/transfer-development-ights.aspx>

Natural Resources & Parks continued

Hazardous Waste Management

Small businesses can get advice, cash incentives, safety materials, training, and access to free disposal to decrease and safely dispose of hazardous waste materials. Materials are available in multiple languages. <http://www.lhwmp.org/home/BHW/sqg.aspx>

Call the Business Waste Line 206.263.8899

Hazardous Waste Management

Small businesses can become EnviroStars and be recognized for their environmentally friendly practices and commitment. Free business promotion, mentoring and technical assistance.

<http://www.lhwmp.org/home/EnviroStars/index.aspx>

Call EnviroStars 206.263.1663

Hazardous Waste Management

Residents can get chemical free gardening advice from Grow Smart Grow Safe, indoor pesticide recommendations, and free disposal services (including home pick-up for qualifying residents) to decrease and safely dispose of hazardous waste materials. <http://your.kingcounty.gov/solidwaste/facilities/hazwaste.aspx>; <http://your.kingcounty.gov/solidwaste/naturalyrdcare/index.aspx>

Call the Household Hazards Line 206.296.4692

Restoration Project Monitoring and Maintenance

The Ecological Restoration and Engineering Services, Monitoring and Maintenance Program aims to find ways to make projects more cost-effective and reliable through the use of comparative studies and experiments. The program tracks project outcomes and performs maintenance and modifications, as needed, to ensure projects meet their goals.

Josh Latterell 206.477.4748 | josh.latterell@kingcounty.gov

Small Habitat Restoration Program

King County's Small Habitat Restoration Program builds low-cost projects in rural and urban King County that enhance and restore streams and wetlands. Projects occur on both public and private land and are selected based upon the benefit they will provide to the environment and the cost-efficiency with which they can be implemented.

Mason Bowles 206.477.4651 | mason.bowles@kingcounty.gov

Lake Stewardship County Lakes Volunteer Monitoring Program

The Lake Stewardship Program works with trained volunteers to study and monitor the health of King County's small lakes. Volunteer citizen scientists are provided with technical assistance and education regarding a variety of lake-related topics and concerns.

Chris Knutson 206.477.4739 | chris.knutson@kingcounty.gov

Noxious Weed Control Program

King County provides education and technical assistance to landowners and public agencies to help them

find the best control options for noxious weeds on each site and to reduce the overall impact of noxious weeds throughout the county. www.kingcounty.gov/weeds

Steven Burke 206.477.9333 | Steven-J.Burke@kingcounty.gov

Lake Weed Watcher Program

Volunteers are trained to survey for aquatic weeds in King County small lakes. The goal is to watch for invasive weeds that are not currently known to occur in King County or that have a very limited distribution, but have the potential to spread and cause damage. Seasonal www.kingcounty.gov/environment/animalsAndPlants/noxious-weeds/weed-watchers/lake-weed-watchers.aspx

Ben Peterson 206.477.4724 | ben.peterson@kingcounty.gov

Knotweed Control on Rivers

Control of invasive knotweed and other invasive plants along the Cedar River, Snoqualmie River and Green River, and Soos Creek and tributaries. On-going, seasonal www.kingcounty.gov/environment/animalsAndPlants/noxious-weeds/knotweed-control-projects.aspx

Steven Burke 206.477.9333 | Steven-J.Burke@kingcounty.gov

PERMITTING & ENVIRONMENTAL REVIEW PLANNING PROJECTS (NEW)

2017-18 Code Updates

Transmit an omnibus zoning code amendment package including amendments to shoreline and critical area regulations and adding sustainable development standards. Shorelines code amendments (KCC 21A.25) and regular zoning code amendments were both transmitted to Council in 2017 and are awaiting Council action. Council adoption expected in 2018

Lisa Verner 206.477.0304 | lisa.verner@kingcounty.gov

Update the zoning code to define agriculture and including all agricultural activities and related agricultural supportive or dependent uses in the Resource land use table and allowing agricultural supportive uses on non-agricultural lands adjacent to the agricultural production districts. Amendments were adopted by Council on December 21, 2017.

Randy Sandin 206.477.0378 | randy.sandin@kingcounty.gov

Implementing the 2016 King County Comprehensive Plan - DPER Work Plan Items

Implementing the 2016 King County Comprehensive Plan – DPER Work Plan Items

Item #5: KCC Implementation Study. Work underway. Due 12/31/2019

Item #6: Alternative Housing Study. Work underway. Due 12/31/2020

Item #8: Cottage Housing. Work to start in 2018. Due 12/31/2018

Item #11: Bicycle Network Study. Work was transmit-▶

ted to Council in December, 2017
Item #12: Ingress/Egress Study. Work to start in 2018.
Due 12/31/2018

Lisa Verner 206.477.0304 | lisa.verner@kingcounty.gov

Customer Green Building Education

Quarterly outreach public meetings for residents of unincorporated KC on various green building techniques which can be incorporated into their new building and redevelopment plans, per commitment in 2015 SCAP. Throughout 2018

Lisa Verner 206.477.0304 | lisa.verner@kingcounty.gov

Construction and Demolition Waste Diversion Ordinance

Transmit an ordinance requiring construction and demolition waste diversion for unincorporated King County. Includes research and development of an ordinance requiring contractors and DIY builders to re-use, recycle and otherwise divert from the landfill the waste materials generated by their building projects in unincorporated KC. A draft ordinance has been reviewed by DPER and by Green Tools (Kinley Deller); details regarding how to best achieve compliance are under review. Transmittal to Council is anticipated at the end of the 2nd Quarter 2018.

Lisa Verner 206.477.0304 | lisa.verner@kingcounty.gov

Skyway-West Hill CSA Plan

In response to Council directive in the 2016 King County Comprehensive Plan, amend the Skyway-West Hill Action Plan and complete a comprehensive review/update of the 1994 West Hill Community Plan. Prepare new plan using the template of the County's new CSA Plan. Hold targeted stakeholder meetings in the community. This update has been suspended per Council's budget proviso adopted on 11-6-17. Expected to re-initiate plan update in 2018 after Council action on the restructured CSA Subarea Plan program.

Bradley Clark 206.477.2449 | bradley.clark@kingcounty.gov

PLANNING PROJECTS (COMPLETED)

2016 King County Comprehensive Plan Update

The 2016 update was the fifth major review of the King County Comprehensive Plan. During this four-year review cycle, substantive changes to policies, land use designations and the Urban Growth Area boundary were proposed. Adopted by King County Council in December 2016.

PERMITTING PROJECTS (COMPLETED)

Landslide Hazard Mapping

Completed work on updating landslide hazard mapping for all of unincorporated King County outside of the Forest Production District. 3rd Quarter 2016.

ACCELA Access

Improved functionality of the department's permit tracking software, Accela Automation. Priorities include improving citizen access, reporting, and ultimately on-line permitting. Phase I completed December 2016.

PLANNING PROJECTS (ONGOING)

Marijuana Legislation

Efforts continue to refine, administer and implement King County's recently amended marijuana regulations.

Jake Tracy 206.263.0875 | jtracy@kingcounty.gov

PERMITTING PROJECTS (ONGOING)

Online Permitting

Launched online submittal and issuance of residential mechanical permits Feb. 2016 with credit card payment via Accela. (Update: 80% of all mechanical permits filed with DPER were received electronically within the first 4 months after the launch.)

John Backman 206.477.0447 | john.backman@kingcounty.gov

MyBuildingPermit.Com (MBP)

King County will join MBP in 2017 enabling additional online permit submittals and credit card payments. This MBP launch will contain 3 permit types - mechanical, registered, and basic plans. Other permit types will be phased in over time.

John Backman 206.477.0447 | john.backman@kingcounty.gov

PROSECUTING ATTORNEY

Office Overview

- The King County Prosecuting Attorney's Office employs over 500 people, including 210 attorneys.
- The Criminal Division represents the state and the county in criminal matters in the King County District and Superior Courts, the state and federal courts of appeal, and the Washington and U.S. Supreme Courts. The Criminal Division is responsible for prosecuting all felonies in King County and all misdemeanors in unincorporated areas of King County.
- The Civil Division is the County's law firm. It serves as legal counsel to the Metropolitan King County Council, the County Executive and all Executive agencies, the Superior and District Courts, the County Assessor, independent boards and commissions, and some school districts. The division litigates cases on behalf and in defense of its clients, provides legal advice and assistance on all sorts of questions and projects, and issues formal written legal opinions from time to time.
- The Family Support Division is an integral part of the federal and state child support system. The deputies establish paternity for children born out of wedlock, ensure support obligations are enforced, and modify ▶

support amounts when necessary.

Emerging Programs and Policy Overview

- 180 Diversion Program –diverts over 350 King County youth per year since 2011. In collaboration with community leaders, the PAO host motivational workshops for youth arrested for committing a misdemeanor violation. The purpose of the workshop is to help the youth identify their strengths, weaknesses, and provide tools to assist in making better decisions.
- Truancy Dropout Prevention Program—over 1200 petitions against truant youth are filed in juvenile court. In an attempt to reengage the youth and their family, the KCPAO hosts reengagement workshops to help identify what is preventing school attendance and with the help of the youth, their parent or guardian, and the school representative, an individualized education reengagement plan is developed.
- LEAD (Law Enforcement Assisted Diversion)—is a law enforcement diversion program that allows police officers to divert those engaged in a minor criminal act into services intended to address a drug addiction, mental health concern, homelessness, or some other root cause that informed their decision to engage in criminal conduct.
- Decriminalized DWLS 3 Cases—in August of 2014, the KCPAO modified its policy on the prosecution of DWLS 3 cases and the Office no longer pursues DWLS 3 cases. In addition, upon the decision to decriminalize these cases by making them a traffic infraction, we recalled all outstanding warrants related to a DWLS 3 matter.
- FIRS (Family Intervention Reconciliation Services) are a youth diversion program that will divert youth who have been arrested due to a domestic violence interaction with a parent or sibling. In looking at juvenile data, DV cases make up 17% of the juvenile unit caseload and of that 17%, 30% involve youth of color. Instead of prosecuting these cases, FIRS is a crisis intervention strategy. The PAO is in the process of modifying policy and practice to divert these cases to a crisis intervention program that will address the needs of the youth and their family.
- CJP (Community Justice Project) is a civil remedy project in which the PAO uses its municipal authority in under-served marginalized communities in unincorporated King County (White Center and Skyway) to address blighted properties that have become crime magnets. In partnership with the Department of Permitting and Environmental Services, the King County Sheriff's Office, and other King County agencies, the goal of the PAO is to prioritize safety issues identified by the community to increase public safety in underserved communities using civil remedies as an enforcement tool instead of the traditional criminal prosecution.

Community Engagement

The PAO routinely participates in public speaking events in which a discussion about criminal justice reform and the impact on communities with a focus on those communities most impacted by crime. The community engagement strategy includes presentations to the community discussing the emerging trends impacting the criminal justice system and PAO criminal justice reform strategies. Emerging trends that the PAO covers in community presentations include:

- Exclusionary School Discipline Practices
- Recidivism
- Racial and Ethnic Disproportionality
- Mental Health Reform
- Sentence Reform
- Drug Reform
- Prison Reform
- More Education/Vocational Opportunities
- More Mental Health Services
- Creation of a Sustainable Reentry System
- Remove unnecessary barriers to reentry

Administration / Human Resources

206.477.1200 | 206.296.9013 FAX

Civil Division

206.477.1120 | 206.296.0191 FAX

Criminal Division

206.296.9000 Seattle | 206.296.0955 FAX

206.205.7400 Kent | 206.205.7475 FAX

206.477.3044 Juvenile Section | 206.296.8869 FAX

District Court Unit

206.477.1290 Seattle - West Division | 206.296.2901 FAX

206.477.2060 MRJC - South Division | 206.205.6145 FAX

206.477.3150 Redmond - East Division | 206.296.3643 FAX

Economic Crimes Unit

206.477.3733 | 206.296.9009 FAX

Family Support Division

206.296.9020 Seattle | 206.296.9581 FAX

206.296.9595 Kent | 206.296.8501 FAX

Media / Press Information

206.477.9169 Whitney Keyes, Communications Director

206.247.2446 Mobile | 206.296.9013 FAX

Press Only Media Inquiries: mediainquiryprosecutor@kingcounty.gov

Northeast District Court

206.477.3150 | Email: ProsecutorNE@kingcounty.gov

Protection Orders

206.477.1103 Seattle | 206.205.8329 FAX

206.477.3757 Kent | 206.205.7410 FAX

206.205.7012 Redmond / Northeast District Court

206.296.0592 FAX

Public Disclosure Requests

King County Prosecuting Attorney

ATTN: Public Disclosure Unit

King County Courthouse

516 3rd Avenue, Room W400

Seattle, WA 98104

Prosecuting Attorney continued

Printable copy of the Public Records Request Form.
206.477.3296 Kristie Johnson, Public Records Officer

School Violence Prevention

206.477.3044 Juvenile Section

Truancy

206.477.4336, Samaneh Alizadeh, Deputy Prosecuting Attorney

Victim Assistance

206.477.3742 Seattle | 206.205.6104 FAX

206.206.477-3757 Kent | 206.205.7475 FAX

206.477.3035 Juvenile Section, Seattle | 206.296.8838 FAX

PUBLIC DEFENSE

The Department of Public Defense provides legal counsel and representation to indigent persons in criminal, juvenile, involuntary treatment, dependency and civil contempt legal proceedings in King County Superior and District Courts and Seattle Municipal Court.

Melanie Oberlander 206.477.9247 | Melanie.oberlander@kingcounty.gov

Main Office: 206.296.7662

PUBLIC HEALTH, SEATTLE & KING COUNTY**Community Health Services****Health insurance access and outreach**

Coordinate with partners on communication, outreach and enrollment activities to inform residents of improved access to government provided or subsidized health insurance as a result of federal healthcare reform.

<http://www.kingcounty.gov/depts/health/locations/health-insurance.aspx>

Daphne Pie 206.263.8369 | daphne.pie@kingcounty.gov

ON GOING**Prevention****Communicable diseases, Public Health laboratory, Medical Examiner Office and vital statistics**

Conduct surveillance and investigation for all communicable diseases. Includes program and/or clinical services in HIV/AIDs, sexually transmitted diseases, tuberculosis, child vaccine distribution, immunization promotion, and public health laboratory services. Provides birth and death certificates and review of causes of death in King County.

<http://www.kingcounty.gov/depts/health/communicable-diseases.aspx>

Donna Allis 206.291.4517 | donna.allis@kingcounty.gov

Chronic Disease & Injury Prevention**Chronic disease & injury prevention, women's health, tobacco**

Chronic disease services including tobacco and obesity prevention, screening services for breast, cervical and colon cancer, diabetes and asthma services through community health workers, and violence and injury prevention services.

<http://www.kingcounty.gov/depts/health/chronic-diseases.aspx>

Mariel Torres Mehdi-pour 206.477-8620 | mariel.torresmehdi-pour@kingcounty.gov

Jail Health Services**Inmate services**

Provide necessary medical, psychiatric, and dental ser-

vices to detained persons in correctional facilities in the King County correctional facilities in Kent and Seattle so inmates receive constitutionally guaranteed health services that meet community and professional standards of care.

Bette Pine 206.263.8284 | bette.pine@kingcounty.gov

Community Health Services**Healthcare services**

Provide center based and regional services which may include WIC, Family planning, primary care, maternity support services, oral health, refugee health, pharmacy, home nursing, healthcare access assistance, healthcare for the homeless, school-based health, and childcare health and other services.

<http://www.kingcounty.gov/depts/health/locations.aspx>

Jerry DeGrieck 206.263.1330 | jerry.degrieck@kingcounty.gov

Preparedness Section**Preparedness**

Support preparedness efforts of healthcare organizations, local governments, businesses, community organizations, and the public to respond and recovery quickly from all hazards including weather incidents, earthquakes, disease outbreaks, and acts of terrorism.

<http://www.kingcounty.gov/depts/health/emergency-preparedness.aspx>

Carina Elsenboss 206.263.8722 | carina.elsenboss@kingcounty.gov

Environmental Health**Environmental public health services**

Permitting and inspection services for businesses and individuals, including food business, food worker, solid waste, plumbing and gas piping, drinking water, and septic systems. Promote health and well-being of all county residents with equity and social justice work, healthy community planning, climate change, local hazardous waste, lead and toxics, veterinary services and zoonotic disease programs.

<http://www.kingcounty.gov/depts/health/environmental-health.aspx>

Ngozi Oleru 206-263-8476 | ngozi.oleru@kingcounty.gov

Emergency Medical Services**Assure high quality emergency medical services**

Coordination of pre-hospital emergency services and provision of regional leadership through partnerships with cities and fire departments to assure the uniformity of medical care and dispatch across jurisdictions, consistency and excellence in training, and medical quality assurance. Focus areas include Medical Direction, EMS Training, Community Programs, Strategic Planning and Data Management, and Administration including Regional Leadership and Financial Management.

<http://www.kingcounty.gov/depts/health/emergency-medical-services.aspx>

Michele Plorde 206.263.8579 | michele.plorde@kingcounty.gov

KING COUNTY SHERIFF'S OFFICE

The King County Sheriff's Office consists of over 1,100 commissioned and professional staff employees who ▶

Sheriff's Office continued

provide services to unincorporated King County and our contract partners. These services include 9-1-1 dispatch, community patrol and emergency response, criminal investigations, traffic safety, transit police, search & rescue, sheriff's civil function, concealed weapons licensing, fingerprinting, records, etc.

The Sheriff is the chief executive officer and conservator of the peace of the county. The mission of the King County Sheriff's Office is to be a trusted partner in fighting crime and improving the quality of life for our residents and guests. We strive to achieve our mission by our work on the following goals: a) Develop and sustain public trust, value and support. b) Reduce crime and improve the community's sense of security. c) Improve traffic safety by reducing impaired and unsafe driving behaviors and traffic collisions. d) Recruit, hire, train and promote the best people, reflective of the community we serve, to provide high quality, professional and responsive service. e) Provide facilities, equipment and technology that support achievement of our mission. f) Prepare to respond to and resolve critical incidents and disasters.

Most of the services you receive are deployed out of one of the Sheriff's Office Precincts. Precinct supervisors work closely with their deputies and detectives to identify crime trends, hot-spot locations and the repeat offenders that are most damaging to your community. They then develop investigative plans to investigate and prosecute those offenders in a coordinated manner with other agencies and the prosecuting attorney's office. Similarly, areas with high numbers of traffic collisions are focused on, along with impaired and unsafe driving behaviors, to reduce the harm that results from collisions.

Deputies are assigned to fairly consistent areas. This allows them to become familiar with residents, businesses, schools, and the overall community in their assigned patrol areas. They are expected to build relationships and learn the particular problems in an area or neighborhood, to include their focus on crime trends, traffic safety and quality of life issues. Bottom line, we want people to be and feel safe while at home, work, school and while traveling!

Our Precincts are referred to as Precincts #2, #3, & #4...or North, Southeast, and Southwest, respectively. Precinct #2 is in Sammamish City Hall, Precinct #3 is in the Hicks Raburn Precinct located in Maple Valley, and Precinct #4 is in downtown Burien.

On behalf of the men and women of the King County Sheriff's Office, thank you for the honor of serving you.

Mitzi Johanknecht, King County Sheriff

Command Structure

Pct. #2 – North Precinct Robin Fenton 206.263.9133

Pct. #3 – Southeast Precinct Major Troy Olmsted 206.477.6446

Pct. #4 – Southwest Precinct Major Bryan Howard 206.477.2200

Other:

Internal Investigations 206.263.2525

Communications Center 911 (Emergency)

206.296.3311 (Non-emergency)

King County Office of Emergency Management 206.296.3830

King County Road Services Hotline 206.477.8100

TRANSPORTATION

Road Services Division

Drainage

Pipe replacement at SW 104th between 17th Avenue SW and 14th Avenue SW. This project will last 2-3 months and will involve lane restrictions. Construction 2016-2017 COMPLETE

Pipe replacement at SW 112th Street between 26th Avenue SW and 25th Avenue SW. This project will last 1-2 months and may require road closures. Construction 2017-2018

76th Avenue South - Reconstruct south bound travel lane and underground storm water conveyance system in front of Skyway fire station. Construction 2017 COMPLETE

Stream crossing work at 162 Avenue SE at SE 166 Ct in Fairwood. Design 2018-2019

NEW 55th Ave S. Culvert Replacement (Sound Transit) – Bingaman Creek crossing at 55th Ave S will be replaced and allow for improvement to upstream habitat as part of a mitigation effort in the Green River Basin. Construction is planned for summer 2018.

Sinkhole/Drainage

Repair 36-inch storm water pipe from 4th Ave South to 8th Avenue South on South 96th Street. To be built 2018

Permanent repair of sinkhole at the intersection of South 96th Street and 8th Avenue South. To be built 2018
<http://www.kingcounty.gov/transportation/kcdot/Roads/RoadsMaintenance/UtilityCoordination.aspx>

Contact: community.relations@kingcounty.gov | 206-477-3840

Pavement Preservation Program

Peasley Canyon/South 320th St at Military Road – Spring/summer 2017 COMPLETE

Outreach: Tristan Cook 206-477-3842 | tristan.cook@kingcounty.gov

Please note: Locations listed are from our 2017 contract that carried over to 2018. Locations for 2018 are still being finalized. Check website for updates www.kingcounty.gov/paving

- Military Road S from S 272nd Street to Federal Way city limit

Transportation continued

- Rainier Avenue S from Renton city limits to Seattle city limits
- 154th Place SE from Jones Road to 156th Avenue SE
- 216th Ave. SE from Black Diamond city limit to Maple Valley city limit

Contact: community.relations@kingcounty.gov | 206-477-3840

Safety Improvement

SW 102nd St & 8th Ave. SW Roundabout - designs and constructs a mini-roundabout at the intersection of SW 102nd Street and 8th Avenue SW.

Contact: community.relations@kingcounty.gov | 206.477.3840

SE 176th St & SE 171st Way Roundabout - Design and construct a mini-roundabout at the intersection of SE 176th Street and SE 171st Way, modify sidewalks and reconstruct ramps to be compliant with the Americans with Disabilities Act.

Contact: community.relations@kingcounty.gov | 206.477.3840

SW 108th St. & 8th Ave. SW Roundabout - Design and construct a mini-roundabout at 8th Avenue SW and SW 108th Street, including a rectangular rapid flashing beacon at the west crosswalk, improvements to the sidewalks, ramps to be compliant with the Americans with Disabilities Act, and other safety improvements.

Contact: community.relations@kingcounty.gov | 206.477.3840

S. Langston Rd. & 59th Ave. S. mini Roundabout -

Contact: community.relations@kingcounty.gov | 206.477.3840

S. 360th St. & Military Rd. S. Roundabout -

Contact: community.relations@kingcounty.gov | 206.477.3840

Roxbury Street Sidewalks

Construct missing sidewalk segment on SW Roxbury Street located between 28th Avenue SW and 30th Avenue SW. Construction 2017 COMPLETE

COUNTYWIDE PROJECTS AND PROGRAMS

ONLINE RESOURCES

24/7 Road Helpline

In unincorporated King County, contact us for help with road maintenance and traffic safety issues, such as downed stop signs, signals that are out or trees over the roadway — 24 hours a day, seven days a week.

206.477.8100 | 800.527.6237 | maint.roads@kingcounty.gov

My Commute

Travel tools and resources for the greater Puget Sound area – Commuting resources – road closures, restrictions, and traffic cameras.

www.kingcounty.gov/mycommute | webteam.roads@kingcounty.gov

Road Alert

Find travel alert information about road closures or conditions that have a significant impact on roads in unincorporated areas of King County. Email subscription services available.

www.kingcounty.gov/roadalert | webteam.roads@kingcounty.gov



Alternative Formats Available

206-477-4700 TTY Relay: 711



King County

Local Services

The Local Service Initiative proposes a new Department that:

- Creates cabinet-level representation
- Responds to local needs
- Improves service delivery

Creation

The proposed Department of Local Services is a comprehensive effort to improve the delivery of efficient, effective, and timely municipal services to the nearly 250,000 residents of unincorporated King County. In consultation and partnership with the Council, whose members directly represent residents in the unincorporated areas, we are creating a best-run *local* government to accompany the Executive's best-run *regional* government.

Collaboration

We are aligning Executive-branch agencies by collaborating, sharing resources, and creating service partnerships that reinforce mutual accountability. This coordinated approach will improve local service in King County and benefits the County as a whole.

Customer-Driven

We work every day to improve the lives of the people we serve. That means consistently monitoring and evaluating our performance to ensure we deliver value to our customers. By focusing on our customers' experience, and integrating continuous improvement methods into our work, our employees will remove roadblocks and achieve results that make a difference.

Connection

Unincorporated area residents deserve one, dedicated Executive-branch partner who listens, collaborates and works to advance their interests. We are working to ensure there is always a place at the table for more voices to help inform how we deliver critical services. We are committed to problem-solving and taking concrete actions to keep our communities connected and running strong. The Department of Local Services will be the conduit that drives enhanced communication between Executive-branch agencies and unincorporated area community members.



Share your thoughts

Email asklocalservices@kingcounty.gov