



2018

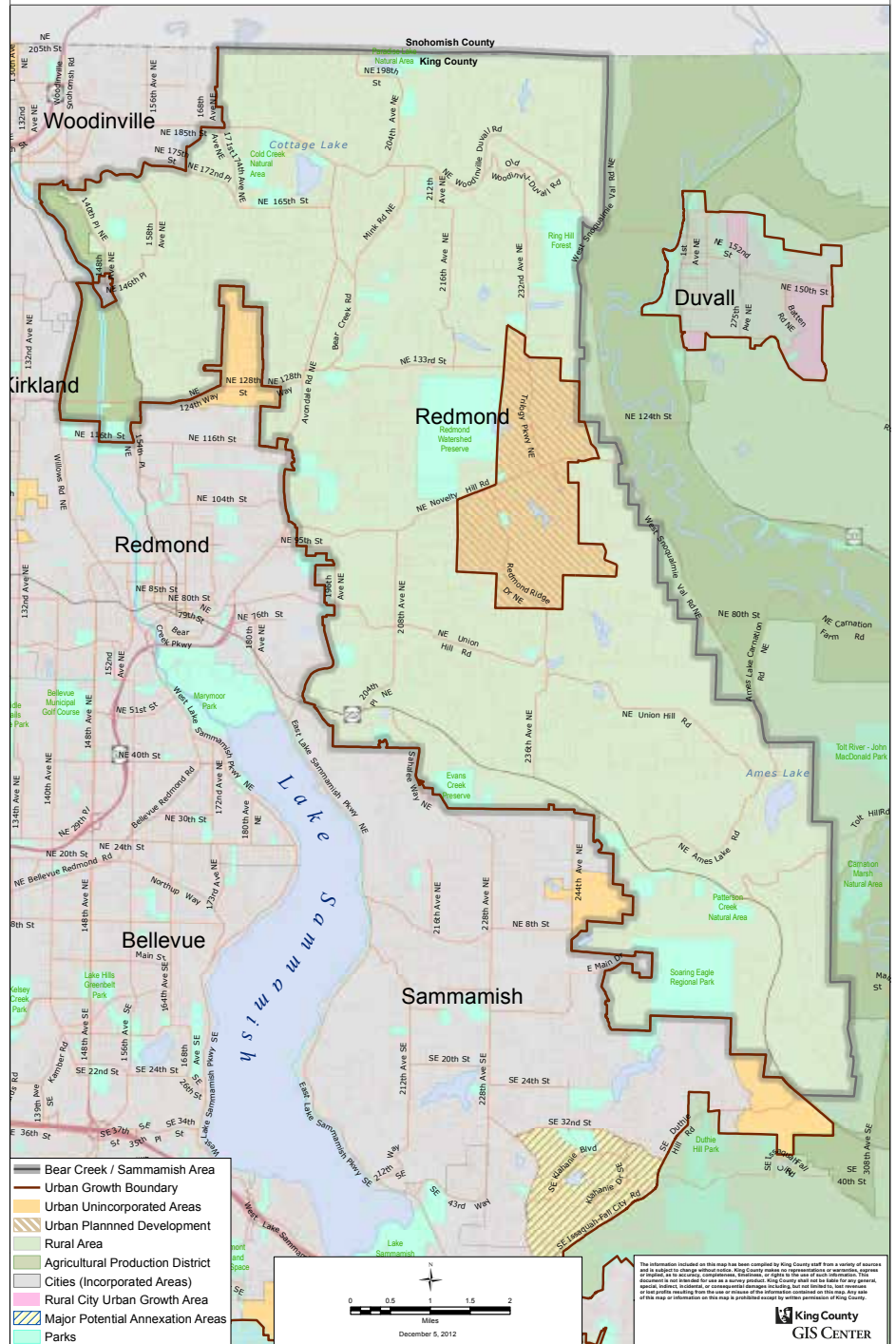
**BEAR CREEK-SAMMAMISH CSA  
Work Plans**



**King County**

## Community Service Areas - Bear Creek / Sammamish Area

BEAR CREEK/SAMMAMISH AREA is the rural area east of Woodinville, Redmond and Sammamish, includes the Redmond Ridge Urban Planned Development and the Sammamish Valley Agriculture Production District (APD). This forested area is characterized by several lakes, including Cottage Lake; the Sammamish River Valley, which contains both the APD and the Sammamish River Trail, along with hills to the south and east.



**King County**  
**Department of**  
**Natural Resources and Parks**  
 201 South Jackson Street, Suite 700  
 Seattle, WA 98104

[kingcounty.gov/exec/community-service-areas](http://kingcounty.gov/exec/community-service-areas)

Alan Painter, Community Service Area Manager | 206.477.4521 | [alan.painter@kingcounty.gov](mailto:alan.painter@kingcounty.gov)  
 Bong Sto. Domingo, Community Liaison | 206.477.4522 | [bong.stodomingo@kingcounty.gov](mailto:bong.stodomingo@kingcounty.gov)  
 Marissa Alegria, Community Liaison | 206.477.4523 | [marissa.alegria@kingcounty.gov](mailto:marissa.alegria@kingcounty.gov)

**W**elcome to the King County work plan for the Bear Creek/Sammamish Community Service Area of King County.

Contained in this document are the current work plans, initiatives, ongoing projects, and completed projects of King County departments and separately elected offices available in your community. We include contact information for the projects in case you would like further details on specific projects or initiatives.

King County's Community Service Area (CSA) program brings representatives of King County government to residents of unincorporated King County. In addition to the following work program, the CSA team hosts a series of town meetings throughout unincorporated King County as well as offers small grants to community organizations serving residents of unincorporated King County.

For more information visit the CSA web site at: <http://www.kingcounty.gov/exec/community-service-areas.aspx>. You can find more information about King County at the County's web

site: [www.kingcounty.gov](http://www.kingcounty.gov)

Specific information about initiatives lead by the King County Executive including the following priority initiatives: becoming the nation's best-run government; confronting climate change in King County; building equity and opportunity for all; and strengthening our regional transit mobility can be reached at the Executive's web site: <http://kingcounty.gov/elected/executive/constantine.aspx>.

Your community is represented on the King County Council by Councilmember Kathy Lambert (District 3). You can access your councilmember at <http://www.kingcounty.gov/council.aspx>

Thank you for your interest in the many projects and initiatives underway in your community.



Alan Painter  
Manager  
King County's Community Service Area Program



## ASSESSOR'S OFFICE

### Property Assessments

#### 2018 Property Valuation and Tax Update

- Provide property tax relief to qualified King County property owners.
- Provide proactive workshops on property tax relief programs, with an emphasis on senior citizen property tax exemptions. Assessor's staff will be available at these workshops to help citizens understand the requirements for the property tax relief, and to register them for the programs, if they qualify.
- Provide detailed valuation and property tax updates for property owners and residents in the unincorporated community service areas.
- Provide physical inspection schedules for all unincorporated community service area neighborhoods and increase public education on the Washington State revenue system at unincorporated community service area community meetings.

**Assessor.info@kingcounty.gov | 206.296.7300**

## COMMUNITY & HUMAN SERVICES

### Community Services Operations Programs

#### Civil Legal Services

Information about civil legal services is available by calling 2-1-1 for non-urgent and non-criminal situations. In case of emergency, call 9-1-1.

Legal assistance is provided to help people in situations including but not limited to:

- legal issues relating to domestic violence or sexual assault
- housing-related legal issues
- people from marginalized communities such as refugees or immigrants
- people living on low incomes
- youth needing legal assistance
- help accessing benefits.

**Scott Ninneman 206.263.9072 | scott.ninneman@kingcounty.gov**

#### Domestic Violence (DV) Services

Information about domestic violence (DV) services is available by calling 2-1-1 for non-urgent inquiries, or at <http://www.kingcounty.gov/depts/prosecutor/victim-community-support/domestic-violence.aspx>. In case of emergencies including if you or a loved one is in danger, call 9-1-1. Survivors of domestic violence and their families may also contact any DV agency in the county for assistance.

**Scott Ninneman 206.263.9072 | scott.ninneman@kingcounty.gov**

#### Older Adults Services

Information about services for older adults and their caregivers is available by calling Community Living Connections at 206.962.8467 or toll free at

1.844.348.5464.

The Sound Generations' Sno-Valley Senior Center serves people living in the Carnation and Duvall areas of the County. The address is 4610 Stephens Avenue, Carnation, WA 98014. The phone number is 425.333.4152.

**Marcy Kubbs 206.263.9102 | Marcy.Kubbs@kingcounty.gov**

#### Sexual Assault (SA) Services

Information about sexual assault (SA) services is available by calling 2-1-1 for non-urgent inquiries. In case of an emergency call 9-1-1. Treatment is available for all King County victims of sexual assault at: Harborview Medical Center/Center for Sexual Assault and Traumatic Stress, located at 401 Broadway, Seattle, WA 98104, 206.744.1600; King County Sexual Assault Resource Center, 200 Mill Avenue S., Ste 10, Renton, WA 98057, phone number: 425.226.5062 (Monday through Friday) or the 24 hour Sexual Assault Resource line: 1.888.998.6423.

**Scott Ninneman 206.263.9072 | scott.ninneman@kingcounty.gov**

#### Homeless and Housing Programs

Homeless Housing: Homeless Prevention Services and other assistance.

<http://kingcounty.gov/depts/community-human-services/housing.aspx>

**Kate Speltz 206.263.9084 | kate.speltz@kingcounty.gov**

**Hedda McLendon 206.263.8965 | hedda.mclendon@kingcounty.gov**

#### Coordinated Entry for All

Clear path to housing for people experiencing homelessness.

**www.kingcounty.gov/cea | 206-328-5796 | cea@kingcounty.gov**

#### Youth and Family Homelessness Prevention Initiative

Client-centered case management and flexible funds to youth ages 12-24 and families with youth who are at imminent risk of homelessness.

<http://kingcounty.gov/beststarts>

**Kim Dodds 206.477.7884 | Kimberly.dodds@kingcounty.gov**

#### Major Home Repair

The Housing Repair Program services low-to-moderate income owner occupied residences (repairs, weatherization and disability accommodations). Program objective is to maintain housing stock for low-to-moderate income homeowner. Keeping this housing stock in a safe, decent and habitable condition. To help seniors and veterans age gracefully in place, with the goal to prevent future homelessness.

<http://www.kingcounty.gov/HousingRepair>

**Clark Fulmer 206.263.9087 | clark.fulmer@kingcounty.gov**

#### Community Development

Community Development: Capital projects funded for activities to revitalize neighborhoods, improve living conditions for low to-moderate income residents and provide microenterprise assistance to income qual- ▶



## Community & Human Services continued

ified entrepreneurs. Technical assistance services to help agencies build capacity in applying for grant funding to expand and/or improve their service delivery. <http://www.kingcounty.gov/cdbg>

**Kathy Tremper 206.263.9097 | [kathy.tremper@kingcounty.gov](mailto:kathy.tremper@kingcounty.gov)**

## Housing Capital Projects

Capital Projects: Project financing to qualified non-profit development organizations or housing authorities in order to provide affordable housing for low-income and vulnerable populations throughout King County.

**Quinnie Tan 206.263.5873 | [quinnie.tan@kingcounty.gov](mailto:quinnie.tan@kingcounty.gov)**

**Jackie Moynahan 206.477.7524 | [jackie.moynahan@kingcounty.gov](mailto:jackie.moynahan@kingcounty.gov)**

## Employment & Education Resources

### Adult Programs & Services

Employment and training services for unemployed and dislocated workers.

**Nancy Loverin 206.263.1394 | [nancy.loverin@kingcounty.gov](mailto:nancy.loverin@kingcounty.gov)**

a) WorkSource Tukwila – A one-stop employment affiliate focused on serving youth aged 16-24 with their employment and education needs. The site also includes King County Career Connections, King County Homeless Employment Program and King County Jobs Initiative. For more information go to: <http://www.kingcounty.gov/eer>

**Jamalia Jones 206.477.5581 | [jamalia.jones@kingcounty.gov](mailto:jamalia.jones@kingcounty.gov)**

b) KC Jobs Initiative – Helps adults ages 18 and older who are currently or were previously involved in the criminal justice system for adults on basic food and needs assistance to get training and living-wage jobs. <http://www.kingcounty.gov/depts/community-human-services/employment-and-education-resources/adult-services.aspx>

**Stephanie Moyes 206.263.9064 | [stephanie.moyes@kingcounty.gov](mailto:stephanie.moyes@kingcounty.gov)**

c) Career Connections – Partners with homeless housing agencies to assist homeless families and veterans with education and employment in order to reach independence. Services may include internet services, tuition and book assistance, transportation assistance, tools and uniform assistance.

**Stephanie Moyes 206.263.9064 | [stephanie.moyes@kingcounty.gov](mailto:stephanie.moyes@kingcounty.gov)**

d) Basic Food Employment & Training (BFET) program – Assists low income adults who are receiving food assistance with their employment and training needs. Services may include help with tuition, job placement and support services.

**Stephanie Moyes 206.263.9064 | [stephanie.moyes@kingcounty.gov](mailto:stephanie.moyes@kingcounty.gov)**

## Youth and Family Programs/Services

### Employment, training and education for youth at risk

a) Youth Source – Education, employment and training services for young people ages 16-24 years who have dropped out of school. YouthSource is located in Tukwila. <http://www.kingcounty.gov/depts/community-hu->

[man-services/employment-and-education-resources/youth-services.aspx](http://www.kingcounty.gov/depts/community-human-services/employment-and-education-resources/youth-services.aspx)

**Jennifer Hill 206.263.9024 | [jennifer.hill@kingcounty.gov](mailto:jennifer.hill@kingcounty.gov)**

**Jamalia Jones 206.477.5581 | [jamalia.jones@kingcounty.gov](mailto:jamalia.jones@kingcounty.gov)**

b) Youth & Family Services Program – Friends of Youth serves eligible

youth and their families living in the service area.

**Stephanie Moyes 206.263.9064 | [stephanie.moyes@kingcounty.gov](mailto:stephanie.moyes@kingcounty.gov)**

c) Juvenile Justice Program – Education and employment services for justice-involved youth are available regionally.

**Zac Davis 206.263.4162 | [zdavis@kingcounty.gov](mailto:zdavis@kingcounty.gov)**

## KC Veterans Program

If you are in need of veterans' resources, please contact the King County Veterans Information and Assistance Call Center at 1-877-904-VETS (8387) or by going to: <http://www.kingcounty.gov/depts/community-human-services/veterans.aspx>

**Bryan Fry 206.477.6996 | [Bryan.Fry@kingcounty.gov](mailto:Bryan.Fry@kingcounty.gov)**

## Veterans, Seniors and Human Services Levy

The Veterans, Seniors and Human Services Levy (VSHSL) was renewed in November 2017 and is a county property tax generating about \$52 million annually, supporting veterans and military servicemembers and their respective families; seniors and their caregivers; and vulnerable populations in King County by funding capital facilities and regional health and human services to promote housing stability, healthy living, financial stability, social engagement and health and human services system improvements and system access throughout King County. Additional information on the VSHSL can be found on the website:

[www.KingCounty.gov/VSHSL](http://www.KingCounty.gov/VSHSL)

**Leo Flor 206.477.4384 | [Leonardo.Flor@kingcounty.gov](mailto:Leonardo.Flor@kingcounty.gov)**

## Developmental Disability Division

### Developmental Disabilities Programs and Services

Programs and services support children prenatal to five and individuals with developmental delays/ disabilities and their families to lead full, integrated, and productive lives: <http://www.kingcounty.gov/ddd>

- Prenatal to Five
  - Promoting Development—creating a comprehensive system for screening developmental milestones with all children prenatal to five and linking families with appropriate referrals.
  - Social-Emotional Wellbeing—supporting close and secure relationships for all children, prenatal to 5 years of age with caregivers and to explore the environment and learn—all in the context of family, community, and culture—with a system of promotion, prevention and treatment, when needed.
  - Early Support for Infants and Toddlers—Individualized “birth-to-three” services to promote optimal development for children with developmental delays or disabilities and their

## Community & Human Services continued

families. Call Family Health Hotline to refer at 800.322.2588.

- School-to-Work Program - assists high school students to leave school with a job and a seamless transition to adult life
- Employment Services - supports adults with individualized pathways to employment so they may obtain competitive jobs
- Community Inclusion Services – assists adults to develop meaningful relationships that promote integration into their communities
- Behavioral Support Team Program – provides intensive wrap-around services for children and youth ages 3-17
- Community Information and Outreach Services - supports information, referral, and outreach to individuals and families

**Magan Cromar 206.263.9045 | magan.cromar@kingcounty.gov**

## Behavioral Health and Recovery Division

1. Mental health (24-hour crisis outreach, treatment services) <http://www.kingcounty.gov/bhrd>

Suicide Prevention:

- a) 1.866.4CRISIS
- b) 206.461.3219 TDD
- c) 1.800.273.TALK (8255)

**King County Crisis and Commitment Services: 206.263.9200**  
**Jim Vollendroff 206.263.8903 | jim.vollendroff@kingcounty.gov**

2. Substance use disorder (inpatient and outpatient services) <http://www.kingcounty.gov/bhrd>

**Jim Vollendroff 206.263.8903 | jim.vollendroff@kingcounty.gov**  
Washington Recovery Helpline 24-hour help with mental health, substance use, and problem gambling:  
**1.866.789.1511 | www.WaRecoveryHelpLine.org**

## King County Mental Illness and Drug Dependency (MIDD)

King County's Mental Illness and Drug Dependency (MIDD) is a countywide 0.1% sales tax generating about \$134 million in the 2017-2018 biennium. The funds support programs and services for people living with mental health conditions and/or substance use disorders. King County's MIDD is managed and operated by the King County Department of Community and Human Services Behavioral Health and Recovery Division. A 36-member advisory committee provides guidance to the implementation and evaluation of MIDD programs and services. Among MIDD's forthcoming new initiatives will be a new fund to provide small grants for behavioral health-related projects and activities initiated by King County's rural communities (grant program launch is expected during 2018).

[www.kingcounty.gov/midd](http://www.kingcounty.gov/midd)

**Chris Verschuyl 206.263.8941 | chris.verschuyl@kingcounty.gov**

## Best Starts for Kids Levy

The Best Starts for Kids Levy is an initiative to improve the health and well-being of King County by investing in promotion, prevention and early intervention for children, youth, families and communities.

<http://www.kingcounty.gov/beststarts>

**Sheila Capestany 206.263.7823 | sheila.capestany@kingcounty.gov**

## Communities of Opportunity (COO)

Communities of Opportunity is a network of residents, communities, decision-makers, and funders who believe every community can be a healthy, thriving community—and that equity and racial justice are both necessary and achievable. COO is supported by an innovative public-private partnership between King County and Seattle Foundation to improve the health and well-being of communities across King County.

COO works to achieve more equitable community conditions through community partnerships in geographic and cultural communities, systems and policy change, and shared learning. COO coordinates opportunities for learning, capacity building, and technical assistance available to a wide range of community organizations. Early investments are bringing partnerships together in White Center, SeaTac/Tukwila, Kent, rural Snoqualmie Valley, Seattle's Rainier Valley and Central District, within Vashon's Latinx community, the Seattle urban Native community, and LGBTQ community, to support and test community-driven solutions. In addition, a diverse group of more than 50 organizations across the County received grants to engage in systems/policy work that influences health, social, economic and racial equity.

<http://www.kingcounty.gov/coo>

**Andrea Akita 206.477.4203 | andrea.akita@kingcounty.gov**

## COMPLETED PROJECTS

### Veterans, Seniors & Human Services Levy (VSHSL)

#### Community Meetings

At these events, King County residents were invited to participate in a community conversation on the strengths and needs of their community with staff from the Department of Community and Human Services. In total, King County hosted 28 conversations, nine focus groups, and four online surveys. The input received through this process informed the populations, result areas, and development of the Veterans, Seniors and Human Services Levy, Ordinance 18555 placed on the ballot November 7, 2017.

**Adam Schmid (206) 477-9338 | adam.schmid@kingcounty.gov**

#### King County Council - Ordinance 18555

On July 20, 2017 the King County Council approved Ordinance 18555, authorizing placement of the Veterans, Seniors and Human Services Levy (VSHSL) on ▶

---

## Community & Human Services Continued

the November 7, 2017 ballot. Planning for the VSHSL was conducted by the Department of Community and Human Services and informed by departmental research, stakeholder consultation and community feedback. The VSHSL was passed by King County voters on the November 2017 General Election.

**Adam Schmid 206.477.9338 | adam.schmid@kingcounty.gov**

### ONGOING PROJECTS

#### **Veterans, Seniors & Human Services Levy (VSHSL) - Community Engagement (2018)**

Public participation is vital to the VSHSL Implementation Plan and the ongoing development of the VSHSL. King County residents can provide input through a series of online surveys (available in multiple languages) on the VSHSL Planning website: [www.kingcounty.gov/VSHSLPlanning](http://www.kingcounty.gov/VSHSLPlanning). This website will share updates and stories on the VSHSL, host surveys for your input, provide a calendar of public meetings, and publish reports throughout the VSHSL.

**Adam Schmid 206.477.9338 | adam.schmid@kingcounty.gov**

---

## KING COUNTY DISTRICT COURTS

### **Court Services**

Seattle, Shoreline, Renton, Burien, Kent, Redmond, Bellevue, Issaquah, Vashon Island

- Passports
- Domestic Violence
- Anti-Harassment
- Small Claims (up to \$5,000)
- Civil (under \$75,000)
- Opportunity to mitigate/defer/contest traffic infractions
- Relicensing
- Inquest Hearings
- Name Changes
- Vehicle Tow and Impound Hearings
- False Alarm Hearings
- Marriage Ceremonies
- Garnishments and other supplemental proceedings.
- Interpreters for Court Hearings
- Lien Foreclosure and forfeiture hearings
- Therapeutic Courts – Mental Health and Veterans Court
- Eliminate barriers to court access, prosecute accused individuals fairly and efficiently while managing and resolving court cases in a timely manner.
- Protecting the Public Safety by providing resources to hold convicted offenders accountable for their actions.

**Call Center 206.205.9200**

---

## EXECUTIVE OFFICE

### **Executive Office - Performance, Strategy & Budget Budget**

King County uses a biennial (two-year) budget and the 2017-2018 Budget was adopted in November 2016. Several amendments have been made since but none has significantly affected County services. There has been considerable concern that federal budget changes would adversely affect certain County services, but such changes have been minor so far.

The County is beginning the process to develop the 2019-2020 Budget. Most funds are in good fiscal condition, but revenue limitations mean there is continuing stress on the General Fund, Roads Fund, and Public Health Fund. Reductions in services paid for from the General Fund and Public Health Fund are likely. The Roads Fund is stable but has far less money than is needed to maintain the existing roads system. PSB continues to support tax reform efforts to address these long-term financial problems.

**Dwight Dively 206.263.9687 | dwight.dively@kingcounty.gov**

**Jonathan Swift 206.263.9699 | jonathan.swift@kingcounty.gov**

### **Continuous Improvement**

PSB continues to deploy the Lean continuous improvement methodology to transform the systems, tools, processes, and culture in County operations to drive greater efficiency and effectiveness in the services and products we provide to our communities.

**Gary Kurihara 206.263.8026 | gary.kurihara@kingcounty.gov**

### **Performance & Strategy**

PSB continues to use proven management tools such as strategic planning, performance measurement, public performance reporting, visual management, and Executive performance reviews to align key County priorities, ensure accountability for strategic and operational performance, and to communicate to the public how the County is doing on delivering effective, efficient, and equitable services.

The Criminal Justice Strategy and Policy Section will continue to work on advancing systemic criminal justice reforms including alternatives to incarceration, reducing recidivism, and supporting the Executive's path to zero youth detention initiative.

**Michael Jacobson 206.263.9622 | michael.jacobson@kingcounty.gov**

### **King County Comprehensive Plan Implementation**

PSB leads updates to the King County Comprehensive Plan, most recently in 2016. PSB will coordinate and monitor work on several Action Items included in Chapter 12: Implementation. A number of these efforts will include public engagement and outreach, including:

- Review of the Transfer of Development Rights ▶

---

**Executive Office continued**

- Program (Dept. of Natural Resources and Parks),
- Initiation of an Alternative Housing Demonstration Project (i.e., small-home developments- Dept. of Community and Human Services),
- Development of a Bicycle Planning Network Report (Dept. of Transportation),
- Review of the Four to One Program (Office of Performance, Strategy and Budget), and
- Response to a recent court decision regarding permit-exempt wells in the rural area (Dept. of Permitting & Environmental Review).
- Additional information on these activities and other long-range planning activities will be shared publicly over the coming months as they develop and will be shared with people on the Comprehensive Plan Mailing list, which can be accessed at [www.kingcounty.gov/compplan/](http://www.kingcounty.gov/compplan/).

Ivan Miller 206.263.8297 | [ivan.miller@kingcounty.gov](mailto:ivan.miller@kingcounty.gov)

---

**EXECUTIVE SERVICES****RALES (Records & Licensing Services)****Community Service Centers (CSCs)**

The King County Community Service Center (CSC) Program works to make it easier to do business with King County via sites located throughout the county. Services provided:

- Apply for a U.S. passport
- Apply for a Washington State marriage license
- Purchase copies of documents recorded with the King County Recorder's Office on or after August 1, 1991.
- Pay King County property taxes
- Purchase or renew a King County pet license
- Obtain information on other county services and programs such as: senior citizen property tax exemptions; assessment appeal forms; property assessment information; local fresh produce guides; bus, bike, or ferry information; King County job listings and applications.

Because King County Community Service Centers offer services on behalf of several agencies, different guidelines or rules apply depending on the service. For additional information on any service, please check out the CSC website: <http://www.kingcounty.gov/depts/records-licensing/community-service-centers.aspx> and contact the site you intend to visit.

- Bothell
- Downtown Seattle - no passport services
- Issaquah - no passport services
- Kent
- Renton

- Shoreline - no passport services  
<http://www.kingcounty.gov/operations/csc.aspx>  
Jon Scherer, Recording Manager | 206.477.6644

**E-911****Smart 911**

King County launched Smart911 in September, 2012 - a supplemental data service that allows residents to Create a Safety Profile that can be seen by emergency responders when you call 9-1-1.

**Enhanced 911 Program Office**

20811 84th Ave S, Suite 105

Kent, WA 98032

206.477.4910

**OEM (Office of Emergency Management)****Emergency Management****Emergency preparation and response**

A number of hazards (from earthquakes to major winter storms) threaten Western Washington. There are specific things residents can do to stay safe and protect their property during these sometimes devastating conditions. King County Emergency Management provides resources, tips, and download-able checklists (in multiple languages). To talk to someone about what you and/or your community can do to prepare for emergencies, please contact KCOEM using the information below.

KCOEM also administers regional public alerts to help residents stay informed about potential hazards and threats that impact their area. Sign-up is free: [www.kingcounty.gov/ALERT](http://www.kingcounty.gov/ALERT)

King County Office of Emergency Management

3511 NE 2nd Street | Renton, WA 98056

Main Phone: 206.296.3830 | Toll Free: 800.523.5044

Fax: 206.205.4056 | [ecc.kc@kingcounty.gov](mailto:ecc.kc@kingcounty.gov)

---

**METRO TRANSIT****Metro Transit Service**

- Metro currently provides service on seven routes in this area, serving Redmond Ridge, Fall City, Woodinville, and Duvall.
- Route 216: Redmond – downtown Seattle via Issaquah Highlands, Eastgate, and Mercer Island; one-way peak-only; six a.m. and eight p.m.
- Route 219: Sammamish – downtown Seattle via Issaquah Highlands, and Eastgate; one-way peak-only; six a.m. and nine p.m.
- Route 224: Redmond – Duvall via Redmond Ridge; two-way weekday service with 19 trips
- Route 232: Duvall – Bellevue via Avondale, Redmond, Overlake and SR-520; one-way peak-only with five trips each peak period ▶



## Metro Transit continued

- Route 248: Avondale – Kirkland via Redmond; two-way all-day with trips about every 30 minutes
  - Route 269: Issaquah – Overlake via Sammamish, Bear Creek, and SR-520; 20 to 30 minute frequency in peak periods – 30-minute midday service was added to this route in September 2017.
  - Route 931: Redmond to UWB/CCC via Avondale and Woodinville; two-way peak-only service about every 30 minutes
- Jeff Lee 206.477.5870 | jeff.lee@kingcounty.gov

## Community Connections

The King County Council approved \$15 million for the Community Connections program in the 2017-2018 biennium budget. Community Connections is the new name (as of March, 2017) for what was originally known as the Alternative Services Demonstration Program. It is a four-year (2015-2018) demonstration program in which Metro works with local governments and community partners to develop innovative and cost-efficient transportation solutions in areas of King County that don't have the infrastructure, density, or land use to support regular, fixed-route bus service. The program aims to develop, test, and evaluate new transportation services that take advantage of innovative ideas, unique partnerships, or emerging technology.

As of December 2017, there are no currently active Community Connections projects in this CSA. However, community councils and groups supporting this CSA are eligible to submit a pilot project application during the 2018 process.

## METRO CONNECTS Long-Range Plan

King County Council adopted Metro's long-range plan, METRO CONNECTS, in January 2017. The Plan presents a shared vision for a future public transportation system that gets people where they want to go and helps our region thrive. It describes an integrated network of transportation options in 2025 and 2040, the facilities and technology needed to support those services, and the financial requirements for building the system. It was developed in close coordination with Sound Transit and other transportation agencies. More information is available online at [kcmetrovision.org](http://kcmetrovision.org).

Graydon Newman 206.477.5862 | [graydon.newman@kingcounty.gov](mailto:graydon.newman@kingcounty.gov)

## METRO CONNECTS Development Program

The METRO CONNECTS Development Program (MCDP) is a midrange planning effort that outlines the timing and substance of Metro's efforts to achieve the METRO CONNECTS vision for service and infrastructure in 2025. Major elements of this program include creating a schedule that shows where, how much, and when Metro will invest in the service growth and capital improvements that METRO CON-

NECTS envisions; and establishing a regular forum to engage and coordinate with cities and stakeholders on the implementation of METRO CONNECTS through the Program's Technical Advisory Committee (TAC). The MCDP is planned to be a rolling program that will inform decision-making in 6-10-year increments over each successive biennium.

King County transmitted materials for approval to King County Council in October 2017, and anticipates approval in early 2018. Metro's planning work is ongoing to develop more detail on projects needed to develop the 2025 service network.

Graydon Newman 206.477.5862 | [graydon.newman@kingcounty.gov](mailto:graydon.newman@kingcounty.gov)

## Metro Transit moving to a new level in King County government

In September 2017, King County Executive Dow Constantine announced his proposal to make Metro Transit its own department within King County government—no longer a division of the Department of Transportation as it is now.

Why? Demand for public transportation is rising, and our region is counting on Metro to deliver more and better transit services. The agency will be in a stronger position to deliver on this expectation as a stand-alone department.

Metro will be making internal organizational changes and developing a new budget with the goal of becoming a department in early 2019. Metro riders will not be affected by the agency's transition to department status.

## Fleet Administration

### On-going internal support services

Fleet Administration is an internal customer service agency that provides cost effective vehicle services, parts, materials and construction supplies. Our goal is to manage a safe responsive fleet of vehicles and equipment, employee access to materials and supplies, in order to respond to the needs of King County citizens.

Jennifer Lindwall 206.477.3883 | [jennifer.lindwall@kingcounty.gov](mailto:jennifer.lindwall@kingcounty.gov)

Fleet provides King County personal property asset management services including mandatory annual inventory report, warehousing and dispersal of surplus items. Our goal is to maintain accurate procedures for the accountability of King County personal property inventory.

Russ Johnson 206.477.3889 | [russ.johnson@kingcounty.gov](mailto:russ.johnson@kingcounty.gov)

## NATURAL RESOURCES & PARKS

### PARKS

#### Future Funding for King County Parks

The King County Parks, Trails, and Open Space Replacement Levy provides the majority of funding for the King County Parks system. This six-year vot-

## Natural Resources & Parks continued

er-approved levy, which passed with over 70% support, began in 2014 and will be expiring in 2019. Examining options for future funding will be a major work item for King County Parks staff in 2018.

<https://kingcountyparks.org/2017/03/18/steady-as-she-goes/>

**Doug Hodson 206.477.5918 | [doug.hodson@kingcounty.gov](mailto:doug.hodson@kingcounty.gov)**

## Parks Customer Service and Outreach

King County Parks has launched a new online reservation system for camping, picnic shelters, and other park amenities throughout the County. Parks is piloting a new mobile and online tool called SeeClickFix for park and trail visitors to report issues and make suggestions.

**Matthew Perkins 206.477.4527 | [matthew.perkins@kingcounty.gov](mailto:matthew.perkins@kingcounty.gov)**

## Derby Creek Flood Reduction and Habitat Enhancement

King County Parks is working on final design for a project to reduce flooding and improve habitat in Derby Creek at the Northshore Athletic Fields complex in Woodinville. Permitting for the project will begin in Q1 2018. The schedule for construction is funding dependent, but could potentially begin in 2019 or 2020. Design for the project has been funded in part using grants from the King County Flood District.

**Lindsey Miller 206.477.3549 | [lindsey.miller@kingcounty.gov](mailto:lindsey.miller@kingcounty.gov)**

## COMPLETED PROJECTS

### Odyssey III Challenge Course at Cottage Lake Park

The YMCA of Greater Seattle, a Community Partnerships and Grants Program partner with King County Parks, completed a lifecycle renovation of the outdoor ropes challenge course, including replacement of all safety related facilities and equipment.

**Scott Thomas 206.477.4586 | [scott.thomas@kingcounty.gov](mailto:scott.thomas@kingcounty.gov)**

## Volunteer Program Events

187 volunteers gave 879 hours at volunteer events – tasks included trail maintenance, new trail construction, planting native trees and shrubs and removing invasive plants. Sites included: Gold Creek Park, Sammamish River Trail, Soaring Eagle. Key partnerships included Mid-Sound Fisheries Enhancement Group and Washington Trails Association and AmeriCorps NCCC.

**Laurie Clinton 206.477.6113 | [laurie.clinton@kingcounty.gov](mailto:laurie.clinton@kingcounty.gov)**

## ONGOING PROJECTS

### On-going maintenance and community outreach

Maintenance of Cottage Lake, Coal Creek, Katherine Taylor, Soaring Eagle, Ring Hill, Gold Creek, Sammamish River trail and other park facilities within the service area as well as on-going conservation easement monitoring. Community outreach user groups within the service area.

**Don Harig 206.477.6140 | [don.harig@kingcounty.gov](mailto:don.harig@kingcounty.gov)**

## Volunteer Program Events

Volunteers that participate in the King County Parks volunteer program provide more than 55,000 hours of service in our parks, trails and natural areas each year. From building and repairing backcountry trails to removing invasive plants and planting native plants to promoting recycling and composting at summer concerts these volunteers are a vital part of the maintenance and improvement of the system. These volunteers play an important role in stewarding our 28,000 acres of open space. Sign-up for the volunteer newsletter for a listing of scheduled events in the area at: Volunteer - King County Want to know what it's like to volunteer with us? Check out our new video: Volunteer with King County Parks on Vimeo If you, your group or business is interested in doing a volunteer project at your favorite King County Park site, we can work with you to plan a custom event. Please contact Volunteer Program Manager Laurie Clinton for custom events and any additional volunteer service opportunities in King County Parks.

**Laurie Clinton 206.477.6113 | [laurie.clinton@kingcounty.gov](mailto:laurie.clinton@kingcounty.gov)**

## Youth and Amateur Sports Grant Program

King County Parks launched a new grant program in 2017. Youth and Amateur Sports Grants (YASG) support fit and healthy communities by investing in programs and capital projects that reduce barriers to access physical activity. King County Parks hosted information sessions in October and the application deadline was in November. Applications will be evaluated and awarded in January 2018. To learn more about the program visit the website at <http://www.kingcounty.gov/services/parks-recreation/parks/get-involved/partnerships-and-grants/yasg.aspx>

**Butch Lovelace 206.477.4577 | [butch.lovelace@kingcounty.gov](mailto:butch.lovelace@kingcounty.gov)**

## Trailhead Direct

King County Parks and King County Metro launched the pilot season of Trailhead Direct. Trailhead Direct wrapped up its inaugural season on Oct. 14-15. Operating since Aug. 5 from the Issaquah Transit Center and averaging about 40 riders per day, Trailhead Direct connected hikers to more than 5,000 acres of protected lands with 150 miles of hiking trails in the Issaquah Alps. Stops included: Margaret's Way trailhead at Cougar-Squak Corridor Park, the Poo Poo Point trailhead on West Tiger Mountain, East Sunset Way Trailhead in Issaquah, Issaquah Highlands Park-and-Ride and Issaquah Transit Center. The service will continue in spring of 2018. To learn more visit: <https://kingcountyparks.org/2017/07/12/trailhead-direct-park-ride-hike/>

**Ryan Dotson 206.477.4562 | [ryan.dotson@kingcounty.gov](mailto:ryan.dotson@kingcounty.gov)**

## Family Movie Nights

Join King County Parks in summer 2018 for a special outdoor movie night in your Big Backyard. This is a ▶

## Natural Resources & Parks continued

free event so bring your low-backed chairs, blankets, snacks, and enjoy a relaxed evening in the park. The movie will be projected onto a 40-foot tall inflatable movie screen so invite your friends, teammates and family- we've got space! Dates and locations to be decided.

**Elizabeth Jessup 206.263.0584 | [elizabeth.jessup@kingcounty.gov](mailto:elizabeth.jessup@kingcounty.gov)**

### Solid Waste Division

**Time limited 2017 projects that are scheduled for work and completion in 2017 or 2018**

#### Comprehensive Solid Waste Management Plan Update

The Solid Waste Division is preparing a draft plan for public review and comment that broadly outlines how King County will manage garbage for the next 20 years. Topics covered in the plan range from waste prevention, recycling and solid waste collection, to transfer and disposal of waste and how these services will be financed. Three key topics are being addressed in the plan: 1) how will King County dispose of its garbage over the long term, 2) what type of transfer services should be provided in northeast King County, and 3) how will we increase recycling to reach a 70% recycling goal. Public comment will be sought in early 2018. Website: <http://kingcounty.gov/depts/dnrp/solid-waste/about/planning/comp-plan.aspx>

**Beth Humphreys 206-477-5264 | [beth.humphreys@kingcounty.gov](mailto:beth.humphreys@kingcounty.gov)**

#### Transfer Station

- Factoria Recycle and Transfer Station Replacement Project – (CIP Project) construction of the new Factoria Recycling and Transfer facility was substantially completed in August 2017. The new transfer building, with a new flat floor configuration and garbage compaction capabilities opened in May 2016. Recycling services were available beginning in October 2017 and the Household Hazardous Waste (HHW) facility opened in October 2017.

Website: <http://your.kingcounty.gov/solidwaste/facilities/factoria-replacement-project.asp>

**Doug Chin 206.477.5217 | [doug.chin@kingcounty.gov](mailto:doug.chin@kingcounty.gov)**

- Self-haul Recycling Separation Requirement – Beginning in January 2018 customers will be required to separate yard waste, clean wood, cardboard, and scrap metal from their garbage at facilities where those materials are accepted for recycling.

**Dale Alekel 206.477.5267 | [dale.alekel@kingcounty.gov](mailto:dale.alekel@kingcounty.gov)**

### ON-GOING PROGRAMS

**Waste Reduction and Recycling Outreach and Education**  
Includes programs and services such as:

- Recycle More/Recicla Mas – education and outreach to single-family residents on how to recycle and compost more materials in curbside programs. Includes targeted outreach to the Spanish-speaking Latino community in King County. Websites: <http://your.kingcounty.gov/>

<http://your.kingcounty.gov/solidwaste/garbage-recycling/recycle-more.asp>, and <http://your.kingcounty.gov/solidwaste/reciclamas/index.asp>, Facebook <https://www.facebook.com/kcreciclamas>; <https://www.facebook.com/recyclemore>

- K-12 Schools program – assembly programs, classroom workshops and assistance to student Green Teams. Website: <http://your.kingcounty.gov/solidwaste/secondary-school/index.asp>

- Green Schools Program - assists more than 250 public and private K-12 schools and 13 school districts to initiate and improve waste reduction, recycling, energy and water conservation and other conservation practices. Recognizes schools and school districts that complete criteria in the program's "Best Practices Guides." Website: <http://your.kingcounty.gov/solidwaste/greenschools/index.asp>

- Recycling Collection Events - King County funding provided to cities and unincorporated areas to offer events for residents and businesses to recycle select materials. Website: <http://your.kingcounty.gov/solidwaste/garbage-recycling/events.asp>

- Carnation and Sammamish Recycling Collection Events accept neighboring unincorporated area residents

- EcoConsumer – Offering free community repair events in Bellevue, Kirkland, Shoreline and other communities. The EcoConsumer public outreach program also provides information and resources about waste reduction and other environmental concerns to the public and media through TV and radio segments, articles, presentations, social media and more.

Website shortcut: [Kcecoconsumer.com](http://Kcecoconsumer.com)

**Tom Watson 206.477.4481 | [tom.watson@kingcounty.gov](mailto:tom.watson@kingcounty.gov)**

- Green Tools – this green building program supports county agencies, cities, the building community, and the public in designing buildings and structures that have fewer impacts on the environment, are energy efficient, and use recycled materials. Website: <http://your.kingcounty.gov/solidwaste/greenbuilding/index.asp>

- Construction & Demolition Waste (C&D) - C&D recycling requirements have rolled out around the County – an informational presentation can be scheduled for your CSA by contacting Kinley Deller at [kinley.deller@kingcounty.gov](mailto:kinley.deller@kingcounty.gov)

Website: <http://your.kingcounty.gov/solidwaste/greenbuilding/construction-demolition.asp>

- LinkUp – works with businesses, agencies and other organizations in the Puget Sound area to expand markets for selected recyclable and reusable materials. Website: <http://your.kingcounty.gov/solidwaste/linkup/index.asp>

- Customer Service - Information/education provided to customers/public on SWD services via web pages and phone support. Website: <http://your.kingcounty.gov/solidwaste/index.asp>

**Solid Waste Division Customer Service: 206.477.4466 | TTY Relay: 711**

#### Transfer Station

The Houghton Transfer Station is a facility where res- ▶

## Natural Resources & Parks continued

idents and businesses bring their garbage for disposal and their recyclable materials for recycling. Detailed information about the materials accepted for recycling and disposal can be found on the website.

Website: <http://your.kingcounty.gov/solidwaste/facilities/houghton-transfer.asp?ID=34>

**Solid Waste Division Customer Service: 206.477.4466 | TTY Relay: 711**

### Household hazardous waste collection

One fixed collection site and the traveling Wastemobile offer free collection of hazardous waste from households and qualifying small quantity generator businesses.

- Factoria Household Hazardous Waste Drop Off Service
- Auburn Wastemobile at the Outlet Collection
- Bothell/Kenmore/Woodinville, Kirkland, Redmond, and Sammamish Wastemobile Events

Websites: HHW Facility location and hours: <http://your.kingcounty.gov/solidwaste/facilities/hazwaste.asp>

Wastemobile schedule: <http://www.hazwastehelp.org/HHW/wastemobile.aspx>

**Household Hazards Line 206.296.4692**

### Litter and Illegal Dumping

Includes several programs, including:

Community Litter Cleanup - Coordinate cleanup of illegal dumpsites and litter on public property

**Morgan John 206.477.4624 | [morgan.john@kingcounty.gov](mailto:morgan.john@kingcounty.gov)**

- Illegal Dumping Hotline – maintains hotline for citizens to report illegal dumping, directs complaints to the appropriate agency for follow up

**Hotline: 206-296-SITE (7483)**

- Junk Vehicle – provides information and facilitates process for removing abandoned vehicles from private property

**Mary Impson 206.477.0297 | [mary.impson@kingcounty.gov](mailto:mary.impson@kingcounty.gov)**

### Community Cleanup Assistance Program

Financial assistance (waived tip fees) to private property owners who are either low income or whose property has been dumped on. Website: <http://your.kingcounty.gov/solidwaste/cleanup/index.asp>. For more information visit <http://kingcounty.gov/depts/dnrp/solid-waste/programs/litter-dumping.aspx>

**Terri Barker 206.477.5214 | [terri.barker@kingcounty.gov](mailto:terri.barker@kingcounty.gov)**

### Landfill Neighbor Outreach

- Cedar Hills Regional Landfill Community Meetings - provides an on-going forum for landfill area residents to learn about current and planned activities at King County's landfill and at Bio Energy Washington's landfill gas-to-energy facility. Meetings occur twice a year. Website: <http://your.kingcounty.gov/solidwaste/facilities/cedar-hills-meetings.asp>

**Polly Young 206.477.5266 | [polly.young@kingcounty.gov](mailto:polly.young@kingcounty.gov)**

## WATER & LAND RESOURCES DIVISION

### Bear Creek Watershed-Scale

#### Stormwater Plan

King County is required to conduct a watershed-scale stormwater planning effort to satisfy permit obligations under section (S5.C.5.c) in the National Pollutant Discharge Elimination System Phase I Municipal Stormwater Permit issued by the Washington State Department of Ecology, effective August 1, 2013 through July 31, 2018, modified January 16, 2015. The watershed-scale plan will include assessments of the landscape based on historic, existing, and projected future conditions. Stormwater management strategies will be evaluated for stream health based on stream hydrology, water quality, and aquatic biota (life forms). Also expected is an implementation plan having estimated costs and identified potential funding mechanisms. A coordination document was submitted to Ecology on August 13, 2015 and a Scope of Work was submitted to Ecology on November 2, 2015 and approved by Ecology on January 13, 2016. During the 2015-2016 biennium monitoring was completed. Assessments of current conditions were completed in mid 2017 and modeling will be completed by 2017 year-end. A draft watershed plan is anticipated to be released to the public for comment in mid-January 2018. Public engagement has continued through the watershed planning process with public meetings occurring on November 4, 2015, February 25, 2016, two technical webinars in November and December 2016, another public meeting on March 29, 2017.

A website has been established for the project at the following URL: [www.kingcounty.gov/BearCreekPlan](http://www.kingcounty.gov/BearCreekPlan). A final public involvement meeting is expected to be either near the end of January 2018 or early February 2018. A final watershed plan will be submitted to Ecology by April 4, 2018

**Jeff Burkey 206.477.4658 | [jeff.burkey@kingcounty.gov](mailto:jeff.burkey@kingcounty.gov)**

#### Bear-Evans Fecal Coliform Total Maximum Daily Load (FCTMDL) and the County's Stormwater Conveyance System – Field & Analytical Work

Some segments of Bear Creek and its tributaries exceed Washington State water quality standards for fecal coliform bacteria. These bacteria exceedances are used as indicators of other problems, including pathogens, detergents or other substances that could be released by failing septic systems or broken sewer lines. And poor practices like not picking up dog poo or improperly managing other domestic animal waste can allow high levels of bacteria to wash into the creek.

Washington State has implemented a “Total Maximum Daily Load” for fecal coliform, which is a limit of fecal coliform bacteria that can be allowed into Bear Creek ▶

## Natural Resources & Parks continued

without violating water quality standards. Because of this “FC TMDL” mandated by the State, King County is required to conduct screening for bacteria sources in parts of this watershed, and to work toward eliminating any that may be identified. Screening is related to the stormwater conveyance system and is required by the NPDES Municipal Stormwater Permit as administered by the State.

Stormwater Services staff conducted numerous field reconnaissance visits and water sampling events in 2017 in Bear basin. Based on preliminary findings, a small number of sites that tested relatively high for bacteria in previous years were further investigated by more sampling at additional sites “up-pipe” or “up-ditch” of the originally identified sites. One confirmed illicit wastewater discharge to King County’s stormwater system, from a business located within the City of Redmond, was successfully connected to sanitary sewer. This action importantly eliminated the illicit connection and is assumed to have reduced the fecal coliform levels (and other pollutants) in this portion of Bear Creek. Another suspected illicit septic discharge was identified in 2017 and will be followed up on with our local health jurisdiction. Further water quality sampling, coupled with field reconnaissance, will continue into 2018.

**Cameron Chapman 206.477.4634 | [cameron.chapman@kingcounty.gov](mailto:cameron.chapman@kingcounty.gov)**  
**Jeanne Dorn 206.477.4679 | [jeanne.dorn@kingcounty.gov](mailto:jeanne.dorn@kingcounty.gov)**

For reporting water quality concerns in general, Stormwater Services’ drainage and water quality hotline number is 206.477.4811.

### Evans Creek Tributary 108

- A small catchment basin study for stormwater retrofit opportunities was completed in 2015. See website for more information at <http://www.kingcounty.gov/depts/dnrp/wlr/sections-programs/stormwater-services-section/capitalservices-unit/small-stream-basin-retrofit/evans-creek-trib-108-retrofit.aspx>
- A grant award from Ecology was awarded for final design and construction of two detention vaults where no detention facilities exist. The vaults were constructed on October 2017.

**Claire Jonson 206.477.4720 | [claire.jonson@kingcounty.gov](mailto:claire.jonson@kingcounty.gov)**

### Bear Creek Doyle Restoration

Substantial construction of the Bear Creek Doyle Property Restoration Project was completed on September 1, 2017. Planting is scheduled to be completed during the 4th quarter of 2017. This project, designed and constructed with the City of Redmond, installed woody debris in the main channel of Bear Creek, constructed side channels for off-channel habitat, and will revegetate about two acres of riparian buffer.

**Laird O’Rollins 206.477.4790 | [laird.orollins@kingcounty.gov](mailto:laird.orollins@kingcounty.gov)**

### Bear Creek--Little Bit Reach Restoration

Feasibility work will begin in 2018 on this project that will enhance habitat within and adjacent to Bear Creek in the reach next to the Little Bit Therapeutic Riding Center.

**Laird O’Rollins 206.477-4790 | [laird.orollins@kingcounty.gov](mailto:laird.orollins@kingcounty.gov)**

### Sammamish River Transition Zone Vegetation Management and Sediment Removal

Since 2011, WLRD has increased the frequency and intensity of vegetation trimming and mowing in the Sammamish River Transition Zone below the lake. This has had a dramatic effect on increasing flows and reducing lake levels. Vegetation trimming and mowing will continue in 2018 in the summer time. Vegetation/mowing trimming was completed in summer 2015.

### Sammamish River Willowmoor Project

WLRD completed technical analysis and worked with a stakeholder advisory committee to develop project alternatives for a project to reconstruct the Sammamish River Transition Zone channel. The purpose of the project is to improve flood protection for Lake Sammamish while improving fish and wildlife habitat. The Flood Control District reviewed these design alternatives and selected the “Split Flow Channel + Pumped Groundwater” alternative. The project team will hire a consultant to bring the project to 30% design. An RFP for the design work has been posted and the work is expected to begin in March 2018. For up-to-date information, visit the website at: <http://www.kingcounty.gov/environment/wlr/sections-programs/river-floodplain-section/capital-projects/willowmoor-floodplain-restoration.aspx>

**John Engel 206.477.4685 | [john.engel@kingcounty.gov](mailto:john.engel@kingcounty.gov)**  
**Kate Akyuz 206.477.4607 | [kate.akyuz@kingcounty.gov](mailto:kate.akyuz@kingcounty.gov)**

### 20 Small Habitat Restoration Program (SHRP) projects

Working with local property owners and public agencies to design, permit, and construct habitat enhancement projects. 2011-2018

**Laura Hartema 206.477.4608 | [laura.hartema@kingcounty.gov](mailto:laura.hartema@kingcounty.gov)**

### Lake Allen Outlet Project

To reduce flooding over roadway in the vicinity of NE 8th St from 245th Pl NE to 250th Ave NE, King County is developing alternative solutions and implementing cost-effective measures. WLRD is conducting a hydrology study for modeling of the Lake Allen outlet channel to evaluate the effectiveness of alternative capital projects to solve the problem. See website for summary of onsite actions taken to date.

<http://www.kingcounty.gov/environment/wlr/sections-programs/stormwater-services-section/capital-services-unit/lake-allen-outlet-project.aspx>

Oct 2011 public meeting held.

Oct. 2014 public meeting held.

**Wendy Kara 206.477.4723 | [wendy.kara@kingcounty.gov](mailto:wendy.kara@kingcounty.gov)**

### COMPLETED PROJECTS

**Elliott Reach WSDOT Mitigation**





## Natural Resources & Parks continued

This project was designed to help meet part of WSDOT 520 mitigation needs by creating wetland, off-channel habitat, and floodplain connections on roughly 5 acres of property in the Elliot Reach. Work was completed via the Mitigation Reserves Program. Construction was phased with the first completed in summer 2015; the second in 2016 and minor adjustments and final planting in 2017.

<http://www.kingcounty.gov/depts/dnrp/wlr/sections-programs/river-flood-plain-section/capital-projects/elliott-bridge.aspx>

## ON-GOING PROJECTS

### Land Conservation Initiative

The King County Land Conservation Initiative is a bold effort underway to “finish the job” on land conservation in King County. Across the County, King County and city partners have identified 62,000 acres of the highest priority conservation lands in five separate categories: (1) urban parks/greenspace, (2) regional trails, (3) river & natural lands, (4) farmlands, and (5) forestlands. The Initiative is a regional effort to permanently protect conservation land to provide benefits to today’s residents and generations to come. The effort is county-wide – from the edge of the Puget Sound, east through urban areas and rural communities, to the farm fields and river valleys at the foot of the Cascade Mountains. In the Snoqualmie Watershed, the County and city partners have identified more than 25,000 acres of high conservation value land. Learn more at <http://kingcounty.gov/services/environment/water-and-land/land-conservation.aspx>.

**Michael Murphy 206.477.4781 | [michael.murphy@kingcounty.gov](mailto:michael.murphy@kingcounty.gov)**

### Green Shorelines

Information and guidance for lakeshore homeowners to understand and implement Green Shoreline practices and green dock designs to benefit salmon and water quality.

<http://www.govlink.org/watersheds/8/action/GreenShorelines/default.aspx>

**Jason Mulvihill-Kuntz 206.477.4780 | [jason.mulvihill-kuntz@kingcounty.gov](mailto:jason.mulvihill-kuntz@kingcounty.gov)**

### Salmon SEEs

Spot spawning salmon in the Lake Washington/Cedar/Sammamish and Green-Duwamish Watersheds each fall. Some sites and times have volunteer naturalists on hand; others are self-guided. Check the website for details. September 2017-January 2018 depending on the site. <http://www.govlink.org/watersheds/8/action/salmon-seeson/default.aspx>

**Jason Mulvihill-Kuntz 206.477.4780 | [jason.mulvihill-kuntz@kingcounty.gov](mailto:jason.mulvihill-kuntz@kingcounty.gov)**

### Drainage and Water Quality Complaint Investigations

Respond to citizen concerns regarding stormwater runoff and surface water quality problems on both residential and commercial property in the unincorporat-

ed areas of King County. <http://www.kingcounty.gov/environment/waterandland/stormwater/problem-investigation-line.aspx>

**Drainage Complaint Line 206.477.4811**

### Minimize Stormwater Pollution

Stormwater runoff comes from small, individual sources in all parts of the watershed. It is a problem that residents can change by stopping small, individual activities that cause pollution and result in large-scale pollution.

<http://www.kingcounty.gov/environment/waterandland/stormwater/introduction/stormwater-runoff.aspx>

### Neighborhood Drainage Assistance Program (NDAP)

NDAP addresses private flooding, erosion, and sedimentation problems. The NDAP can design and fund capital improvement projects, repair existing drainage systems, and provide technical assistance for questions about construction, maintenance, permits, and storm drainage. <http://www.kingcounty.gov/environment/waterandland/stormwater/neighborhood-drainage-ssistance.aspx>

**Brian Sleight 206.477.4826 | [brian.sleight@kingcounty.gov](mailto:brian.sleight@kingcounty.gov)**

### Agricultural Drainage Assistance Program (ADAP)

ADAP helps agricultural property owners improve drainage of their fields by providing both technical and financial assistance.

<http://www.kingcounty.gov/environment/waterandland/stormwater/neighborhood-drainage-ssistance.aspx>

**Brian Sleight 206.477.4826 | [brian.sleight@kingcounty.gov](mailto:brian.sleight@kingcounty.gov)**

### Livestock Program

Support the raising and keeping of livestock to minimize adverse impacts on the environment, particularly on water quality and salmon habitat. This includes help developing a workable solution for handling livestock waste.

<http://www.kingcounty.gov/environment/wlr/sections-programs/rural-regional-services-section/agriculture-program/livestock-programs.aspx>

**Rick Reinlasoder 206.477.4810 | [rick.reinlasoder@kingcounty.gov](mailto:rick.reinlasoder@kingcounty.gov)**

### Farmland Preservation Program

The County purchases development rights from agricultural landowner’s to permanently protect the land for future farming. It is a voluntary program.

<http://www.kingcounty.gov/environment/wlr/sections-programs/rural-regional-services-section/agriculture-program/farmland-preservation-program.aspx>

**Ted Sullivan 206.477.4834 | [ted.sullivan@kingcounty.gov](mailto:ted.sullivan@kingcounty.gov)**

### Forestry Program

The County offers education, technical assistance, and economic incentives aimed at retaining forest land for its environmental, social, and economic benefits. <http://www.kingcounty.gov/environment/wlr/sections-programs/rural-regional-services-section/forestry-program.aspx>

**Bill Loeber 206.477.4755 | [bill.loeber@kingcounty.gov](mailto:bill.loeber@kingcounty.gov)**

**Wendy Sammarco 206.263.6916 | [wsammarco@kingcounty.gov](mailto:wsammarco@kingcounty.gov)**

## Natural Resources & Parks continued

### Current Use Taxation

The Public Benefit Rating System and the Timber Land programs provide incentives to encourage landowners to voluntarily conserve and protect land resources, open space, and timber. In return for preserving and managing resources, the land is assessed at a value consistent with its “current use” rather than the “highest and best use.” The reduction in assessed land value is greater than 50 percent and as much as 90 percent for the portion of the land participating in the program. <http://kingcounty.gov/incentives>

**Bill Bernstein 206.477.4643** | [bill.bernstein@kingcounty.gov](mailto:bill.bernstein@kingcounty.gov)

**Megan Kim 206.477.4788** | [megan.kim@kingcounty.gov](mailto:megan.kim@kingcounty.gov)

### Transfer of Development Rights

The TDR program is a voluntary, incentive-based, and market-driven approach to preserve land and steer development growth away from rural and resource lands into King County’s Urban Area. Rural landowners realize economic return through the sale of development rights to private developers who are able to build more compactly in designated unincorporated urban areas and partner cities.

<http://www.kingcounty.gov/environment/stewardship/sustainable-building/transfer-development-ights.aspx>

### Hazardous Waste Management

Small businesses can get advice, cash incentives, safety materials, training, and access to free disposal to decrease and safely dispose of hazardous waste materials. Materials are available in multiple languages. <http://www.lhwmp.org/home/BHW/sqg.aspx>

**Call the Business Waste Line 206.263.8899**

### Hazardous Waste Management

Small businesses can become EnviroStars and be recognized for their environmentally friendly practices and commitment. Free business promotion, mentoring and technical assistance. <http://www.lhwmp.org/home/EnviroStars/index.aspx>

**Call EnviroStars 206.263.1663**

### Hazardous Waste Management

Residents can get chemical free gardening advice from Grow Smart Grow Safe, indoor pesticide recommendations, and free disposal services (including home pick-up for qualifying residents) to decrease and safely dispose of hazardous waste materials.

<http://your.kingcounty.gov/solidwaste/facilities/hazwaste.asp>; <http://your.kingcounty.gov/solidwaste/naturalyrdcare/index.asp>

**Call the Household Hazards Line 206.296.4692**

### Restoration Project Monitoring and Maintenance

The Ecological Restoration and Engineering Services, Monitoring and Maintenance Program aims to find

ways to make projects more cost-effective and reliable through the use of comparative studies and experiments. The program tracks project outcomes and performs maintenance and modifications, as needed, to ensure projects meet their goals.

**Josh Latterell 206.477.4748** | [josh.latterell@kingcounty.gov](mailto:josh.latterell@kingcounty.gov)

### Small Habitat Restoration Program

King County’s Small Habitat Restoration Program builds low-cost projects in rural and urban King County that enhance and restore streams and wetlands. Projects occur on both public and private land and are selected based upon the benefit they will provide to the environment and the cost-efficiency with which they can be implemented.

**Mason Bowles 206.477.4651** | [mason.bowles@kingcounty.gov](mailto:mason.bowles@kingcounty.gov)

### Lake Stewardship County Lakes Volunteer Monitoring Program

The Lake Stewardship Program works with trained volunteers to study and monitor the health of King County’s small lakes. Volunteer citizen scientists are provided with technical assistance and education regarding a variety of lake-related topics and concerns.

**Chris Knutson 206.477.4739** | [chris.knutson@kingcounty.gov](mailto:chris.knutson@kingcounty.gov)

### Noxious Weed Control Program

King County provides education and technical assistance to landowners and public agencies to help them find the best control options for noxious weeds on each site and to reduce the overall impact of noxious weeds throughout the county. [www.kingcounty.gov/weeds](http://www.kingcounty.gov/weeds)

**Steven Burke 206.477.9333** | [Steven-J.Burke@kingcounty.gov](mailto:Steven-J.Burke@kingcounty.gov)

### Lake Weed Watcher Program

Volunteers are trained to survey for aquatic weeds in King County small lakes. The goal is to watch for invasive weeds that are not currently known to occur in King County or that have a very limited distribution, but have the potential to spread and cause damage. Seasonal [www.kingcounty.gov/environment/animalsAndPlants/noxious-weeds/weed-watchers/lake-weed-watchers.aspx](http://www.kingcounty.gov/environment/animalsAndPlants/noxious-weeds/weed-watchers/lake-weed-watchers.aspx)

**Ben Peterson 206.477.4724** | [ben.peterson@kingcounty.gov](mailto:ben.peterson@kingcounty.gov)

### Knotweed Control on Rivers

Control of invasive knotweed and other invasive plants along the Cedar River, Snoqualmie River and Green River, and Soos Creek and tributaries. On-going, seasonal [www.kingcounty.gov/environment/animalsAndPlants/noxious-weeds/knotweed-control-projects.aspx](http://www.kingcounty.gov/environment/animalsAndPlants/noxious-weeds/knotweed-control-projects.aspx)

**Steven Burke 206.477.4639** | [Steven-J.Burke@kingcounty.gov](mailto:Steven-J.Burke@kingcounty.gov)

## PERMITTING & ENVIRONMENTAL REVIEW PLANNING PROJECTS (NEW)

### 2017-18 Code Updates

Transmit an omnibus zoning code amendment package including amendments to shoreline and critical area regulations and adding sustainable development ▶

---

## Permitting & Environmental Review continued

standards. Shorelines code amendments (KCC 21A.25) and regular zoning code amendments were both transmitted to Council in 2017 and are awaiting Council action. Council adoption expected in 2018

**Lisa Verner 206.477.0304 | [lisa.verner@kingcounty.gov](mailto:lisa.verner@kingcounty.gov)**

Transmit an ordinance updating the zoning code by defining agriculture and including all agricultural activities and related agricultural supportive or dependent uses in the Resource land use table and allowing agricultural supportive uses on non-agricultural lands adjacent to the agricultural production districts. Amendments have been transmitted to Council and are anticipated to be adopted December 4, 2017.

**Randy Sandin 206.477.0378 | [randy.sandin@kingcounty.gov](mailto:randy.sandin@kingcounty.gov)**

### 2016 King County Comprehensive Plan – DPER Work Plan Items

Item #5: KCC Implementation Study. Work underway. Due 12/31/2019

Item #6: Alternative Housing Study. Work underway. Due 12/31/2020

Item #8: Cottage Housing. Work to start in 2018. Due 12/31/2018

Item #11: Bicycle Network Study. Work to be transmitted to Council in December, 2017

Item #12: Ingress/Egress Study. Work to start in 2018. Due 12/31/2018

**Lisa Verner 206.477.0304 | [lisa.verner@kingcounty.gov](mailto:lisa.verner@kingcounty.gov)**

### Scoping for Bear Creek UPD Expirations

Development permits for the three Novelty Hill Urban Planned Developments (UPD) in the Bear Creek CSA (Redmond Ridge, Trilogy, and Redmond Ridge East) are set to expire starting in 2021. DPER will begin scoping the project to transition these UPDs to King County's zoning code regulation without the UPD permits. This will occur as part of the 2020 Comprehensive Plan Update as an Area Zoning Study. 4th Quarter 2018

**Kevin LeClair 206.477.2717 | [kevin.leclair@kingcounty.gov](mailto:kevin.leclair@kingcounty.gov)**

### Customer Green Building Education

Quarterly outreach public meetings for residents of unincorporated KC on various green building techniques which can be incorporated into their new building and redevelopment plans, per commitment in 2015 SCAP. Throughout 2017 and 2018

**Lisa Verner 206.477.0304 | [lisa.verner@kingcounty.gov](mailto:lisa.verner@kingcounty.gov)**

### Construction and Demolition Waste Diversion Ordinance

Transmit an ordinance requiring construction and demolition waste diversion for unincorporated King County. Includes research and development of an ordinance requiring contractors and DIY builders to re-use, recycle and otherwise divert from the landfill

the waste materials generated by their building projects in unincorporated KC. A draft ordinance has been reviewed by DPER and by Green Tools (Kinley Deller); details regarding how to best achieve compliance are under review. Transmittal to Council is anticipated in 1st Quarter 2018.

**Lisa Verner 206.477.0304 | [lisa.verner@kingcounty.gov](mailto:lisa.verner@kingcounty.gov)**

## PLANNING PROJECTS (COMPLETED)

### 2016 King County Comprehensive Plan Update

The 2016 update was the fifth major review of the King County Comprehensive Plan. During this four-year review cycle, substantive changes to policies, land use designations and the Urban Growth Area boundary were proposed. Adopted by King County Council in December 2016.

## PERMITTING PROJECTS (COMPLETED)

### Landslide Hazard Mapping

Completed work on updating landslide hazard mapping for all of unincorporated King County outside of the Forest Production District. 3rd Quarter 2016.

### ACCELA Access

Improved functionality of the department's permit tracking software, Accela Automation. Priorities include improving citizen access, reporting, and ultimately online permitting. Phase I completed December 2016.

## PLANNING PROJECTS (ONGOING)

### Marijuana Legislation

Efforts continue to refine, administer and implement King County's recently amended marijuana regulations.

**Jake Tracy 206.263.0875 | [jtracy@kingcounty.gov](mailto:jtracy@kingcounty.gov)**

## PERMITTING PROJECTS (ONGOING)

### Online Permitting

Launched online submittal and issuance of residential mechanical permits Feb. 2016 with credit card payment via Accela. (Update: 80% of all mechanical permits filed with DPER were received electronically within the first 4 months after the launch.)

**John Backman 206.477.0447 | [john.backman@kingcounty.gov](mailto:john.backman@kingcounty.gov)**

### MyBuildingPermit.Com (MBP)

King County will join MBP in 2017 enabling additional online permit submittals and credit card payments. This MBP launch will contain 3 permit types - mechanical, registered, and basic plans. Other permit types will be phased in over time.

**John Backman 206.477.0447 | [john.backman@kingcounty.gov](mailto:john.backman@kingcounty.gov)**

---

## PROSECUTING ATTORNEY

### Office Overview

- The King County Prosecuting Attorney's Office employs over 500 people, including 210 attorneys. ▶

## Prosecuting Attorney continued

- The Criminal Division represents the state and the county in criminal matters in the King County District and Superior Courts, the state and federal courts of appeal, and the Washington and U.S. Supreme Courts. The Criminal Division is responsible for prosecuting all felonies in King County and all misdemeanors in unincorporated areas of King County.
- The Civil Division is the County's law firm. It serves as legal counsel to the Metropolitan King County Council, the County Executive and all Executive agencies, the Superior and District Courts, the County Assessor, independent boards and commissions, and some school districts. The division litigates cases on behalf and in defense of its clients, provides legal advice and assistance on all sorts of questions and projects, and issues formal written legal opinions from time to time.
- The Family Support Division is an integral part of the federal and state child support system. The deputies establish paternity for children born out of wedlock, ensure support obligations are enforced, and modify support amounts when necessary.

### Emerging Programs and Policy Overview

- 180 Diversion Program –diverts over 350 King County youth per year since 2011. In collaboration with community leaders, the PAO host motivational workshops for youth arrested for committing a misdemeanor violation. The purpose of the workshop is to help the youth identify their strengths, weaknesses, and provide tools to assist in making better decisions.
- Truancy Dropout Prevention Program—over 1200 petitions against truant youth are filed in juvenile court. In an attempt to reengage the youth and their family, the KCPAO hosts reengagement workshops to help identify what is preventing school attendance and with the help of the youth, their parent or guardian, and the school representative, an individualized education reengagement plan is developed.
- LEAD (Law Enforcement Assisted Diversion)—is a law enforcement diversion program that allows police officers to divert those engaged in a minor criminal act into services intended to address a drug addiction, mental health concern, homelessness, or some other root cause that informed their decision to engage in criminal conduct.
- Decriminalized DWLS 3 Cases—in August of 2014, the KCPAO modified its policy on the prosecution of DWLS 3 cases and the Office no longer pursues DWLS 3 cases. In addition, upon the decision to decriminalize these cases by making them a traffic infraction, we recalled all outstanding warrants related to a DWLS 3 matter.
- FIRS (Family Intervention Reconciliation Services) are a youth diversion program that will divert youth who have been arrested due to a domestic violence

interaction with a parent or sibling. In looking at juvenile data, DV cases make up 17% of the juvenile unit caseload and of that 17%, 30% involve youth of color. Instead of prosecuting these cases, FIRS is a crisis intervention strategy. The PAO is in the process of modifying policy and practice to divert these cases to a crisis intervention program that will address the needs of the youth and their family.

- CJP (Community Justice Project) is a civil remedy project in which the PAO uses its municipal authority in under-served marginalized communities in unincorporated King County (White Center and Skyway) to address blighted properties that have become crime magnets. In partnership with the Department of Permitting and Environmental Services, the King County Sheriff's Office, and other King County agencies, the goal of the PAO is to prioritize safety issues identified by the community to increase public safety in underserved communities using civil remedies as an enforcement tool instead of the traditional criminal prosecution.

### Community Engagement

The PAO routinely participates in public speaking events in which a discussion about criminal justice reform and the impact on communities with a focus on those communities most impacted by crime. The community engagement strategy includes presentations to the community discussing the emerging trends impacting the criminal justice system and PAO criminal justice reform strategies. Emerging trends that the PAO covers in community presentations include:

- Exclusionary School Discipline Practices
- Recidivism
- Racial and Ethnic Disproportionality
- Mental Health Reform
- Sentence Reform
- Drug Reform
- Prison Reform
- More Education/Vocational Opportunities
- More Mental Health Services
- Creation of a Sustainable Reentry System
- Remove unnecessary barriers to reentry

### Administration / Human Resources

206.477.1200 | 206.296.9013 FAX

#### Civil Division

206.477.1120 | 206.296.0191 FAX

#### Criminal Division

206.296.9000 Seattle | 206.296.0955 FAX

206.205.7400 Kent | 206.205.7475 FAX

206.477.3044 Juvenile Section | 206.296.8869 FAX

#### District Court Unit

206.477.1290 Seattle - West Division | 206.296.2901 FAX

206.477.2060 MRJC - South Division | 206.205.6145 FAX

206.477.3150 Redmond - East Division | 206.296.3643 FAX

#### Economic Crimes Unit

206.477.3733 | 206.296.9009 FAX

**Prosecuting Attorney continued**

**Family Support Division**

206.296.9020 Seattle | 206.296.9581 FAX

206.296.9595 Kent | 206.296.8501 FAX

**Media / Press Information**

206.477.9169 Whitney Keyes, Communications Director

206.247.2446 Mobile | 206.296.9013 FAX

Press Only Media Inquiries: [mediainquiryprosecutor@kingcounty.gov](mailto:mediainquiryprosecutor@kingcounty.gov)

**Northeast District Court**

206.477.3150 | Email: [ProsecutorNE@kingcounty.gov](mailto:ProsecutorNE@kingcounty.gov)

**Protection Orders**

206.477.1103 Seattle | 206.205.8329 FAX

206.477.3757 Kent | 206.205.7410 FAX

206.205.7012 Redmond / Northeast District Court

206.296.0592 FAX

**Public Disclosure Requests**

King County Prosecuting Attorney

ATTN: Public Disclosure Unit

King County Courthouse

516 3rd Avenue, Room W400

Seattle, WA 98104

Printable copy of the Public Records Request Form.

206.477.3296 Kristie Johnson, Public Records Officer

**School Violence Prevention**

206.477.3044 Juvenile Section

**Truancy**

206.477.4336, Samaneh Alizadeh, Deputy Prosecuting Attorney

**Victim Assistance**

206.477.3742 Seattle | 206.205.6104 FAX

206.206.477-3757 Kent | 206.205.7475 FAX

206.477.3035 Juvenile Section, Seattle | 206.296.8838 FAX

---

**PUBLIC DEFENSE**

The Department of Public Defense provides legal counsel and representation to indigent persons in criminal, juvenile, involuntary treatment, dependency and civil contempt legal proceedings in King County Superior and District Courts and Seattle Municipal Court.

**Melanie Oberlander 206.477.9247 | [Melanie.oberlander@kingcounty.gov](mailto:Melanie.oberlander@kingcounty.gov)**

**Main Office: 206.296.7662**

---

**PUBLIC HEALTH, SEATTLE & KING COUNTY**

**Community Health Services**

**Health insurance access and outreach**

Coordinate with partners on communication, outreach and enrollment activities to inform residents of improved access to government provided or subsidized health insurance as a result of federal healthcare reform.

<http://www.kingcounty.gov/depts/health/locations/health-insurance.aspx>

**Daphne Pie 206.263.8369 | [daphne.pie@kingcounty.gov](mailto:daphne.pie@kingcounty.gov)**

**ON GOING**

**Prevention**

**Communicable diseases, Public Health laboratory, Medical Examiner Office and vital statistics**

Conduct surveillance and investigation for all com-

municable diseases. Includes program and/or clinical services in HIV/AIDs, sexually transmitted diseases, tuberculosis, child vaccine distribution, immunization promotion, and public health laboratory services. Provides birth and death certificates and review of causes of death in King County.

<http://www.kingcounty.gov/depts/health/communicable-diseases.aspx>

**Donna Allis 206.291.4517 | [donna.allis@kingcounty.gov](mailto:donna.allis@kingcounty.gov)**

**Chronic Disease & Injury Prevention**

**Chronic disease & injury prevention, women's health, tobacco**

Chronic disease services including tobacco and obesity prevention, screening services for breast, cervical and colon cancer, diabetes and asthma services through community health workers, and violence and injury prevention services.

<http://www.kingcounty.gov/depts/health/chronic-diseases.aspx>

**Mariel Torres Mehdipour 206.477-8620 | [mariel.torresmehdipour@kingcounty.gov](mailto:mariel.torresmehdipour@kingcounty.gov)**

**Jail Health Services**

**Inmate services**

Provide necessary medical, psychiatric, and dental services to detained persons in correctional facilities in the King County correctional facilities in Kent and Seattle so inmates receive constitutionally guaranteed health services that meet community and professional standards of care.

**Bette Pine 206.263.8284 | [bette.pine@kingcounty.gov](mailto:bette.pine@kingcounty.gov)**

**Community Health Services**

**Healthcare services**

Provide center based and regional services which may include WIC, Family planning, primary care, maternity support services, oral health, refugee health, pharmacy, home nursing, healthcare access assistance, healthcare for the homeless, school-based health, and childcare health and other services.

<http://www.kingcounty.gov/depts/health/locations.aspx>

**Jerry DeGriek 206.263.1330 | [jerry.degriek@kingcounty.gov](mailto:jerry.degriek@kingcounty.gov)**

**Preparedness Section**

**Preparedness**

Support preparedness efforts of healthcare organizations, local governments, businesses, community organizations, and the public to respond and recovery quickly from all hazards including weather incidents, earthquakes, disease outbreaks, and acts of terrorism.

<http://www.kingcounty.gov/depts/health/emergency-preparedness.aspx>

**Carina Eisenboss 206.263.8722 | [carina.eisenboss@kingcounty.gov](mailto:carina.eisenboss@kingcounty.gov)**

**Environmental Health**

**Environmental public health services**

Permitting and inspection services for businesses and individuals, including food business, food worker, solid waste, plumbing and gas piping, drinking water, ▶



---

**Public Health continued**

and septic systems. Promote health and well-being of all county residents with equity and social justice work, healthy community planning, climate change, local hazardous waste, lead and toxics, veterinary services and zoonotic disease programs.

<http://www.kingcounty.gov/depts/health/environmental-health.aspx>

**Ngozi Oleru 206-263-8476 | [ngozi.oleru@kingcounty.gov](mailto:ngozi.oleru@kingcounty.gov)**

**Emergency Medical Services****Assure high quality emergency medical services**

Coordination of pre-hospital emergency services and provision of regional leadership through partnerships with cities and fire departments to assure the uniformity of medical care and dispatch across jurisdictions, consistency and excellence in training, and medical quality assurance. Focus areas include Medical Direction, EMS Training, Community Programs, Strategic Planning and Data Management, and Administration including Regional Leadership and Financial Management.

<http://www.kingcounty.gov/depts/health/emergency-medical-services.aspx>

**Michele Plorde 206.263.8579 | [michele.plorde@kingcounty.gov](mailto:michele.plorde@kingcounty.gov)**

---

**KING COUNTY SHERIFF'S OFFICE**

The King County Sheriff's Office consists of over 1,100 commissioned and professional staff employees who provide services to unincorporated King County and our contract partners. These services include 9-1-1 dispatch, community patrol and emergency response, criminal investigations, traffic safety, transit police, search & rescue, sheriff's civil function, concealed weapons licensing, fingerprinting, records, etc.

The Sheriff is the chief executive officer and conservator of the peace of the county. The mission of the King County Sheriff's Office is to be a trusted partner in fighting crime and improving the quality of life for our residents and guests. We strive to achieve our mission by our work on the following goals: a) Develop and sustain public trust, value and support. b) Reduce crime and improve the community's sense of security. c) Improve traffic safety by reducing impaired and unsafe driving behaviors and traffic collisions. d) Recruit, hire, train and promote the best people, reflective of the community we serve, to provide high quality, professional and responsive service. e) Provide facilities, equipment and technology that support achievement of our mission. f) Prepare to respond to and resolve critical incidents and disasters.

Most of the services you receive are deployed out of one of the Sheriff's Office Precincts. Precinct supervisors work closely with their deputies and detectives to identify crime trends, hot-spot locations and the repeat offenders that are most damaging to your community. They then develop investigative plans to investigate and prosecute

those offenders in a coordinated manner with other agencies and the prosecuting attorney's office. Similarly, areas with high numbers of traffic collisions are focused on, along with impaired and unsafe driving behaviors, to reduce the harm that results from collisions.

Deputies are assigned to fairly consistent areas. This allows them to become familiar with residents, businesses, schools, and the overall community in their assigned patrol areas. They are expected to build relationships and learn the particular problems in an area or neighborhood, to include their focus on crime trends, traffic safety and quality of life issues. Bottom line, we want people to be and feel safe while at home, work, school and while traveling!

Our Precincts are referred to as Precincts #2, #3, & #4...or North, Southeast, and Southwest, respectively. Precinct #2 is in Sammamish City Hall, Precinct #3 is in the Hicks Raburn Precinct located in Maple Valley, and Precinct #4 is in downtown Burien.

On behalf of the men and women of the King County Sheriff's Office, thank you for the honor of serving you.

Mitzi Johanknecht, King County Sheriff

**Command Structure**

Pct. #2 – North Precinct Robin Fenton 206.263.9133

Pct. #3 – Southeast Precinct Major Troy Olmsted 206.477.6446

Pct. #4 – Southwest Precinct Major Bryan Howard 206.477.2200

**Other:**

Internal Investigations 206.263.2525

Communications Center 911 (Emergency)

206.296.3311 (Non-emergency)

King County Office of Emergency Management 206.296.3830

King County Road Services Hotline 206.477.8100

---

**TRANSPORTATION****Road Services Division****Drainage**

NE 124 Street east of SR 202, two cross culverts to be replaced – In construction

NE Union Hill Road 225 NE culvert replacement. – In construction

NEW PROJECT ADDED Sahalee Way NE at 46000 block culvert replacement - Construction 2018 or 2019  
**[community.relations@kingcounty.gov](mailto:community.relations@kingcounty.gov) or 206-477-3840**

**ITS Enhancement**

Intelligent transportation system (ITS) project on NE Woodinville-Duvall Road includes design and installation of signal interconnect and remote operation and monitoring capability of 11 signal controllers/cabinets, fiber optic interconnect, variable message signs, cameras, and road weather information systems. This is a high ranking project due to traffic volumes and high collision locations. Will reduce travel time and ▶

### Transportation continued

provide travel information to public via cameras and message signs. Also ranks high in regional ITS Implementation Plan. To be completed 2018 See website for more information: <http://aqua.kingcounty.gov/kcdot/roads/cip/ProjectDetail.aspx?CIPIID=1116885>

Tristan Cook 206.477.3842 | [tristan.cook@kingcounty.gov](mailto:tristan.cook@kingcounty.gov)

### Safety Improvement

NE 165th Street Flood Risk Reduction Project will raise the road elevation between 179th Place NE and 183rd Place NE south of Cottage Lake, to alleviate routine flooding and closure of this minor arterial that serves as a bypass route for Woodinville-Duvall Road. Construction summer of 2018

See website for more information: <http://aqua.kingcounty.gov/kcdot/roads/cip/ProjectDetail.aspx?CIPIID=1127589>

[community.relations@kingcounty.gov](mailto:community.relations@kingcounty.gov) or 206.477.3840

### COUNTYWIDE PROJECTS AND PROGRAMS

#### Pavement Preservation Program (Road Resurfacing)

Locations for 2018 are still being finalized. Check website for updates [www.kingcounty.gov/paving](http://www.kingcounty.gov/paving)

### High Collision Safety

Locations for 2018 are still being finalized. Work includes High Friction Surface Treatment and signal, sign, marking and sight line improvements.

### ONLINE RESOURCES

#### 24/7 Road Helpline

In unincorporated King County, contact us for help with road maintenance and traffic safety issues, such as downed stop signs, signals that are out or trees over the roadway — 24 hours a day, seven days a week.

206.477.8100 | 800.527.6237 | [maint.roads@kingcounty.gov](mailto:maint.roads@kingcounty.gov)

#### My Commute

Travel tools and resources for the greater Puget Sound area – Commuting resources – road closures, restrictions, and traffic cameras.

[www.kingcounty.gov/mycommute](http://www.kingcounty.gov/mycommute) | [webteam.roads@kingcounty.gov](mailto:webteam.roads@kingcounty.gov)

#### Road Alert

Find travel alert information about road closures or conditions that have a significant impact on roads in Unincorporated areas of King County. Email subscription services available.

[www.kingcounty.gov/roadalert](http://www.kingcounty.gov/roadalert) • [webteam.roads@kingcounty.gov](mailto:webteam.roads@kingcounty.gov)



#### The Local Service Initiative proposes a new Department that:

- Creates cabinet-level representation
- Responds to local needs
- Improves service delivery

#### Creation

The proposed Department of Local Services is a comprehensive effort to improve the delivery of efficient, effective, and timely municipal services to the nearly 250,000 residents of unincorporated King County. In consultation and partnership with the Council, whose members directly represent residents in the unincorporated areas, we are creating a best-run local government to accompany the Executive's best-run regional government.

#### Collaboration

We are aligning Executive-branch agencies by collaborating, sharing resources, and creating service partnerships that reinforce mutual accountability. This coordinated approach will improve local service in King County and benefits the County as a whole.

#### Customer-Driven

We work every day to improve the lives of the people we serve. That means consistently monitoring and evaluating our performance to ensure we deliver value to our customers. By focusing on our customers' experience, and integrating continuous improvement methods into our work, our employees will remove roadblocks and achieve results that make a difference.

#### Connection

Unincorporated area residents deserve one, dedicated Executive-branch partner who listens, collaborates and works to advance their interests. We are working to ensure there is always a place at the table for more voices to help inform how we deliver critical services. We are committed to problem-solving and taking concrete actions to keep our communities connected and running strong. The Department of Local Services will be the conduit that drives enhanced communication between Executive-branch agencies and unincorporated area community members.



Share your thoughts

Email [asklocalservices@kingcounty.gov](mailto:asklocalservices@kingcounty.gov)

### Alternative Formats Available

206-477-4700 TTY Relay: 711