



King County

Department of Local Services
Road Services Division

CHANGE REPORT

DRAFT 2020 King County Transportation Needs Report

DRAFT 2020 King County Arterial Classifications

Proposed changes to transportation elements of the King County
Comprehensive Plan: King County Transportation Needs Report and King
County Arterial Classification

June 5, 2019 (2020 King County Comprehensive Plan, public review draft)

2020 King County Transportation Needs Report

What Is the Transportation Needs Report and How Is It Used?

The King County Transportation Needs Report (TNR) is a long-term, comprehensive list of improvement needs for the roads, bridges and related infrastructure located in unincorporated King County. It includes consideration of significant projects in adjacent cities, counties, and on state highways as they relate to the overall functioning of the transportation system. The transportation needs outlined in the TNR include those that are currently known as well as those that are forecast, due to regionally-adopted targets for growth and development.

The TNR is a functional plan of the *King County Comprehensive Plan*. Together with the King County Department of Local Services, Road Services Division (Roads) Six-Year Capital Improvement Program (CIP) and the biennial operating budget, it fulfills the requirement of growth management legislation (RCW 36.70A.070) as the transportation capital facilities plan element of the King County Comprehensive Plan. The schedule for updating the TNR corresponds to updates of the *King County Comprehensive Plan*.

How does the King County Transportation Needs Report comply with the law?

1. It is based on the land use element of the comprehensive plan.
2. The list of transportation needs and recommended improvements for capacity projects was developed using travel demand forecasts that are based on the regionally-adopted growth targets.
3. It includes a financial analysis that reflects the most recent land use changes, project amendments, costs, and financial revenue assumptions.
4. It documents intergovernmental coordination, with particular attention to potential impacts on adjacent jurisdictions.
5. It includes non-motorized needs (bicycle and pedestrian).

Relationship to the *King County Comprehensive Plan*

A primary purpose of the TNR is to fulfill specific requirements of state growth management legislation for comprehensive planning. King County's TNR fulfills these requirements, as outlined in state legislation (RCW 36.70A.070 (6)):

Specific actions and requirements for bringing into compliance locally-owned transportation facilities or services that are below the Comprehensive Plan established level of service standards;

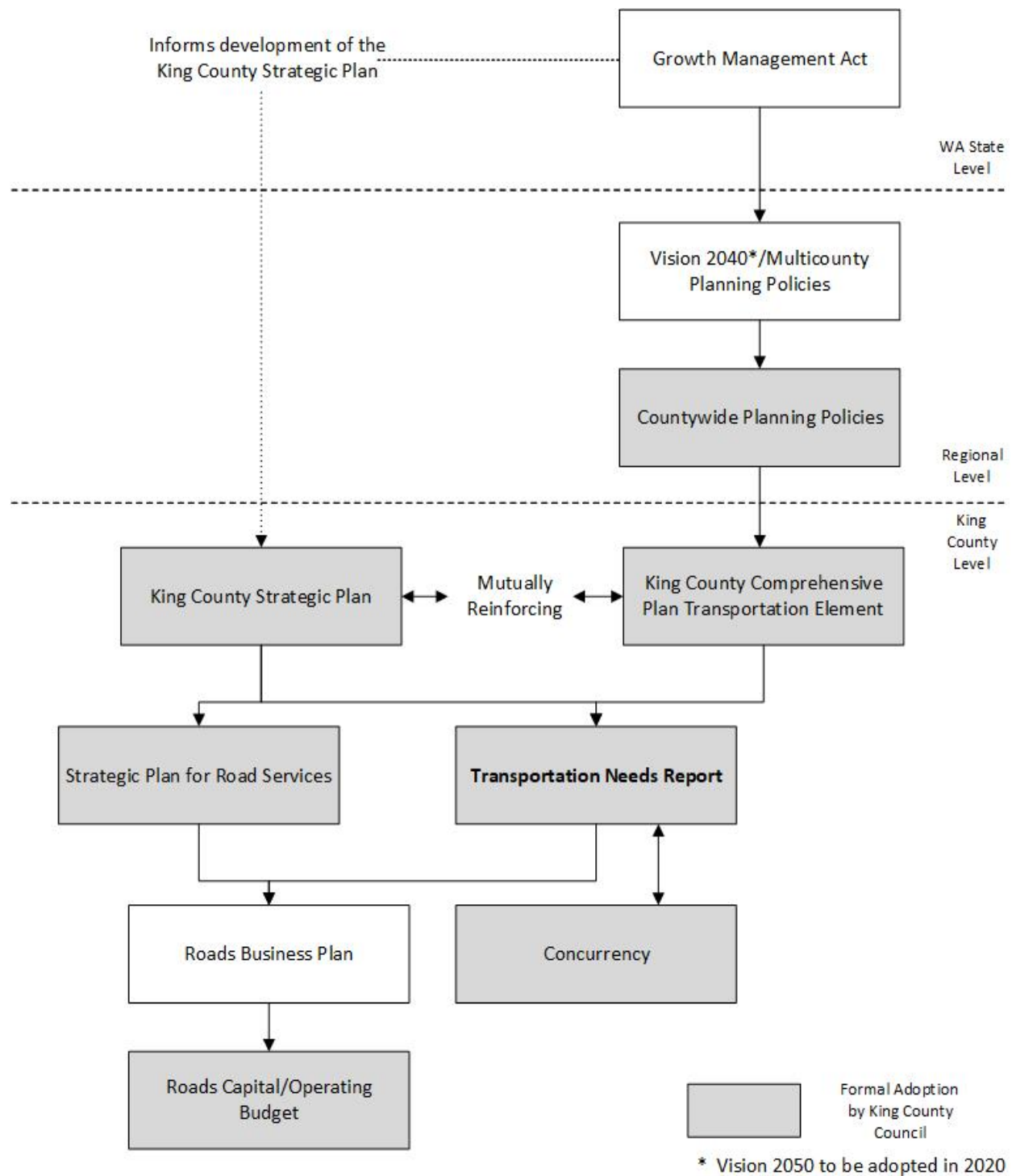
Forecasts of traffic of at least ten years based on the adopted growth targets and land use plan to provide information on the location, timing, and capacity needs of future growth;

Identification of state and local system needs to meet current and future demands;

An analysis of funding capability to judge needs against probable funding resources;

A multiyear financing plan based on the needs identified.

Washington State, regional and local transportation planning relationships:



Rural Regional Corridors

Rural Regional Corridors are recognized in the King County Comprehensive Plan as segments of certain arterials that pass through rural lands to primarily connect urban areas. This type of roadway plays a key regional mobility role in the county's transportation system. While additional capacity is generally prohibited by county policy on arterial roads in the rural area, a limited exception is made for Rural Regional Corridors. These corridors may receive capacity improvements if the increased capacity is designed to serve mobility and safety needs of the urban population while discouraging inappropriate development in the surrounding Rural Area or natural resource lands.

Rural Regional Corridors must be classified as Principal Arterials and carry high traffic volumes, defined as a minimum of 15,000 Average Daily Trips. They also have at least half of their PM Peak trips (the evening commute) traveling to cities or other counties. They connect one urban area to another, or to a highway of statewide significance that provides such connection, by traversing the rural area.

Based on the criteria in the Comprehensive Plan, the following King County unincorporated area roadways currently qualify as Rural Regional Corridors:

	Woodinville Duvall Road	Novelty Hill Road	Issaquah Hobart Road	Avondale Road
Limits	Woodinville city limits to Duvall city limits	Redmond city limits to W. Snoq. Valley Road	Issaquah city limits to SR-18	NE 116 th to Woodinville-Duvall Road
King County Arterial Classification	Principal Arterial	Principal Arterial	Principal Arterial	Principal Arterial
Average Daily Trips (ADT)	19,000 (2016)	23,600 (2016)	21,400 (2017)	25,700 (2016)

King County's Transportation Needs and Funding

The TNR evaluates the difference between identified transportation needs and future revenues for King County. This analysis augments work undertaken by Roads to assess the County's ability to maintain the condition of its roadway assets given declining revenues.

King County continues to experience a roads funding crisis, due to municipal annexations, the 2008 recession, declines in gas tax revenues, the effects of voter initiatives, and an aging bridge and road system. The lack of revenue is significantly impacting the county's ability to maintain and improve roads. Projections indicate that Roads' revenues will not keep pace with

maintenance and preservation needs for King County's system. King County Roads does not have the funds to address the majority of the projects contained in the 2020 TNR. When capital funds are available, they will be directed to safety, regulatory and preservation projects consistent with Road Services Division's Strategic Plan and Line of Business Plan.

Critical safety work remains the top priority. With insufficient funds for a full preservation program or timely replacement of infrastructure, available revenues are focused on reacting to the higher risks associated with the deteriorating road system.

It has been more than a decade since a new capacity project has been funded, and preservation projects have been limited or associated with one-time funding. The six-year capital improvement program is significantly diminished from past years and is focused on addressing deterioration rather than planned preservation and maintenance. The division anticipates the need to continue to focus available resources on unplanned failures and system deterioration and recognizes that not all of these needs will be met and assets will be restricted or closed.

In August 2015, King County convened a panel of regional leaders and community members to meet and explore solutions for maintaining and preserving the aging bridge and road system in unincorporated King County. The Bridges and Roads Task Force reviewed the background, history, and the analysis of an independent consultant that identified a funding gap of \$250 million to \$400 million a year to maintain, replace, and improve county bridges and roads. King County continues to work with local and regional partners to advance regional transportation funding solutions.

2020 Transportation Needs Report Changes

The 2016 adopted TNR served as a starting point for this update. The 2016 list was updated to reflect recently completed capital projects as well as current technical information regarding traffic safety, asset condition, regulatory requirements, community needs, and local-regional considerations. The proposed 2020 TNR list reflects the following changes:

- 149 new 'needs' are added to the DRAFT 2020 Transportation Needs Report;
- 33 capital projects were completed by King County that addressed 'needs' identified within the adopted 2016 TNR, these needs were removed from the DRAFT 2020 Transportation Needs Report;
- 27 'needs' identified within the 2016 TNR are removed from the proposed 2020 list, due to updated technical information and completed studies.

Table 1 provides a summary of these changes, by TNR category. Appendix A contains a complete list of proposed transportation needs to be included within the 2020 TNR. Appendix B contains TNR maps.

Table 1. 2020 Transportation Needs Report (TNR) Summary of Changes

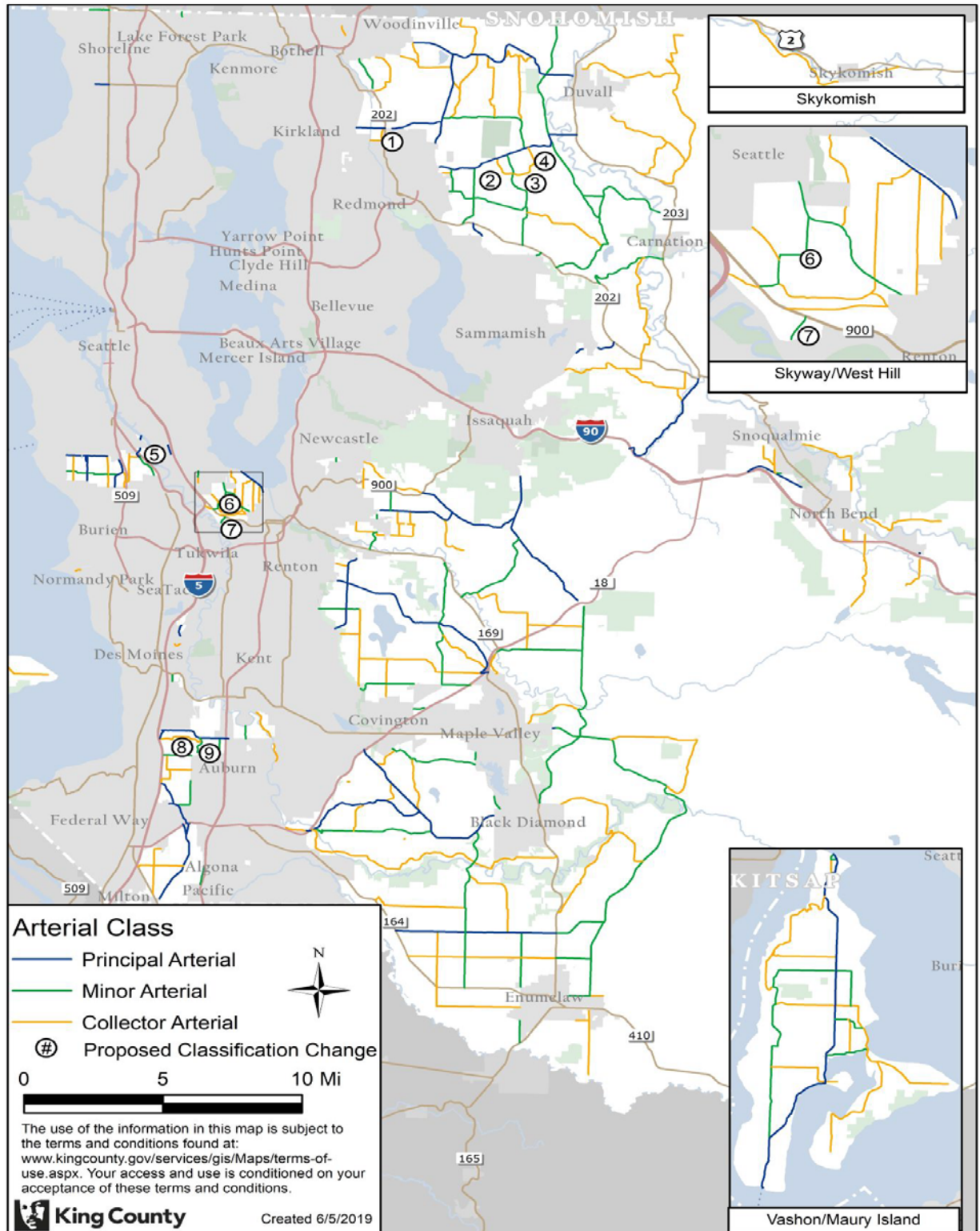
TNR Category Name and Overview	2016 Adopted TNR						2020 TNR (public review draft)		
	# of projects	2016 Estimated cost	% of 2016 TNR costs	# Completed since 2016	# deleted for 2020	# added for 2020	# of projects	Estimated cost	% of 2020 TNR costs
Capacity-Major: Capacity projects increase the size of the road to improve its ability to safely accommodate higher traffic volumes.	19	\$307,130,000	29%	0	2	0	17	\$368,600,000	22%
Bridge: Vehicular and pedestrian bridge projects include design, compliance and construction to improve safety and asset conditions of the county's bridges.	43	\$229,460,000	22%	0	14	15	44	\$301,410,000	18%
Reconstruction: Road reconstruction projects improve safety and typically involve full removal and replacement of the surface layer, road base and related road infrastructure, such as drainage and guardrails.	37	\$107,116,000	10%	1	0	0	36	\$288,670,000	17%
Non-Motorized: Safety improvements to benefit people walking, biking, or participating in other active recreation activities. Sidewalk construction or shoulder widening/paving are common non-motorized projects.	58	\$84,948,500	8%	3	0	18	73	\$246,160,000	15%
Intersection and Traffic Safety Operations (INT-TSO): Projects typically incorporate one or more traffic safety measures, such as sightline improvements, traffic signals, re-channelization ("striping") and roundabouts.	40	\$115,935,600	11%	3	8	13	42	\$190,160,000	11%
Vulnerable Road Segments (VRS): Roads frequently impacted by flooding, tides, wave action, storm surges or slides are often protected through infrastructure, such as: seawalls, armored slopes and retaining walls.	27	\$85,842,300	8%	1	0	21	47	\$165,610,000	10%
Drainage: Projects that preserve the integrity of the road and improve safety by moving water away from the road. Projects typically improve infrastructure such as culverts, ditches, catch basins and drainage systems.	27	\$31,027,000	3%	5	1	78	99	\$111,580,000	7%
Intelligent Transportation Systems (ITS): Projects that advance safety and mobility by integrating communications technologies, such as of cameras, vehicle detection, traffic signal equipment and timing upgrades into transportation infrastructure.	20	\$55,717,000	5%	2	2	0	16	\$9,680,000	1%
Guardrail: Guardrail projects to improve safety by reducing the severity of run-off-the-road collisions.	58	\$35,199,300	3%	18	0	4	44	\$9,490,000	1%
	329	\$1,052,375,700	100%	33	27	149	418	\$1,691,360,000	100%

DRAFT 2020 King County Arterial Classifications: proposed changes

Table 2. This table summarizes nine proposed changes to the King County arterial classification system. This numbering system is incorporated into the King County Arterial Classification proposed change map on the following page.

#	Road Name (s)	Proposed Limits	Existing KC Arterial Classification Category	Proposed Change to KC Arterial Classification Category
1	154 PL NE	NE 124 St to NE 116 St	Local	Collector
2	Cedar Park Crescent NE/NE Cedar Park Crescent	NE Novelty Hill Rd to Redmond Ridge Dr NE	Local	Collector
3	NE Cedar Park Crescent	Redmond Ridge Dr NE to Eastridge Dr NE	Local	Collector
4	Eastridge Drive NE	NE 110 St to NE Cedar Park Crescent	Local	Collector
5	14 Ave S	Des Moines Memorial Drive S to SR-99 SB on-ramp	Local	Minor Arterial
6	S 129 St/64 Ave S/68 Ave S	S 129 St to Renton Ave S	Collector	Minor Arterial
7	68 Ave S	SR-900 to Renton CL	Collector	Minor Arterial
8	S Star Lake Rd	Military Rd S to S 277 St	Local	Collector
9	55 Ave S	S 277 St to Auburn City Limits	Collector	Minor Arterial

2020 King County Arterial Classifications: Public Review Draft



APPENDIX A. 2020 Transportation Needs Report LISTS

This appendix contains DRAFT 2020 Transportation Needs Report lists, organized using tables. Each table contains the 'needs' identified on individual TNR maps. TNR maps are located within Appendix B.

Appendix A

Map Number 1: North Vashon

TNR Project Number	TNR Category	Project Status*	Location	Scope	Estimated Cost	Notes	Community Service Area
DR-20-19	Drainage	New for 2020 TNR	Beall Rd SW at SW 188 St	Replace/construct drainage infrastructure	\$ 2,700,000		Vashon/Maury Island
DR-20-20	Drainage	New for 2020 TNR	SW 156 St E of Vashon Hwy SW	Replace/construct drainage infrastructure	\$ 1,170,000		Vashon/Maury Island
DR-20-67	Drainage	New for 2020 TNR	11010 SW Cemetery Rd	Replace/construct drainage infrastructure	\$ 1,200,000		Vashon/Maury Island
DR-8	Drainage	Carryover from 2016 TNR	SW 171st St & 93rd Ave SW (Gorsuch Creek)	Replace/construct drainage infrastructure	\$ 300,000		Vashon/Maury Island
SW-96	Intersection and Traffic Safety Operations	Deleted	Vashon Highway SW & SW Cemetery Rd	Construct roundabout	\$ -	Project determined to be outside of TNR planning horizon.	Vashon/Maury Island
NM-0106	Non-Motorized	Carryover from 2016 TNR	SW Bank Rd: From 97 Pl SW to Beall Rd SW	Provide non-motorized facility	\$ 580,000		Vashon/Maury Island
NM-15-9	Non-Motorized	Carryover from 2016 TNR	SE Cemetery Rd/ Beall Rd SW: From 107th Ave SW to SW 184th St	Provide non-motorized facility	\$ 7,670,000		Vashon/Maury Island
NM-5054	Non-Motorized	Carryover from 2016 TNR	SW Bank Rd: From 107th Ave SW to Vashon Hwy SW	Provide non-motorized facility	\$ 5,150,000		Vashon/Maury Island
NM-0203	Non-Motorized	Carryover from 2016 TNR - scope change	SW 177th St/98th Pl SW: Vashon Hwy SW to SW Bank Rd, Vashon Hwy SW north of SE SW 177th St, SW Bank Road: Vashon Hwy SW to 98th Pl SW	Provide non-motorized facility	\$ 480,000	SW 177th St/98th Pl SW added to scope	Vashon/Maury Island
RC-56	Vulnerable Road Segments	Carryover from 2016 TNR	Westside Highway SW: From Crescent Dr SW to McIntyre Rd SW	Reconstruct roadway	\$ 622,000		Vashon/Maury Island
RC-58	Vulnerable Road Segments	Carryover from 2016 TNR	Crescent Dr SW: From Westside Highway SW to SW Cove Road	Reconstruct roadway	\$ 779,000		Vashon/Maury Island

Appendix A

Map Number 2: South Vashon

TNR Project Number	TNR Category	Project Status*	Location	Scope	Estimated Cost	Notes	Community Service Area
DR-20-18	Drainage	New for 2020 TNR	SW 232 St at Old Mill Rd SW	Replace/construct drainage infrastructure	\$ 3,780,000		Vashon/Maury Island
DR-20-49	Drainage	New for 2020 TNR	23737 Old Mill Rd Sw	Replace/construct drainage infrastructure	\$ 2,250,000		Vashon/Maury Island
DR-15-13	Drainage	Carryover from 2016 TNR	Chautauqua Beach Rd SW & Ellisport Creek	Pipe replacement, seawall removal, contaminated solid removal	\$ 2,000,000		Vashon/Maury Island
GR-15-40	Guardrail	Carryover from 2016 TNR	Dockton Rd SW: From SW Ellisport Rd to SW 222nd St	Construct guardrail along seawall	\$ 760,000		Vashon/Maury Island
GR-15-41	Guardrail	Carryover from 2016 TNR	Vashon Hwy SW Seawall: From SW 240th Pl to 115th Ave SW	Construct guardrail along seawall	\$ 640,000		Vashon/Maury Island
GR-15-42	Guardrail	Carryover from 2016 TNR	SW Quartermaster Dr: From Monument Rd SW to Dockton Rd SW	Construct guardrail along seawall	\$ 370,000		Vashon/Maury Island
NM-9975	Non-Motorized	Carryover from 2016 TNR	SW Tahlequah Rd near Tahlequah Ferry Dock	Provide non-motorized facility	\$ 130,000		Vashon/Maury Island
VRS-20-11	Vulnerable Road Segments	New for 2020 TNR	SW Quartermaster Drive	Rebuild seawall and raise road	\$ 6,000,000		Vashon/Maury Island
RC-10	Vulnerable Road Segments	Carryover from 2016 TNR	Dockton Rd SW: From SW Ellisport Road to Portage Way SW	Replace seawall	\$ 42,413,000		Vashon/Maury Island
RC-15	Vulnerable Road Segments	Carryover from 2016 TNR	Vashon Hwy SW: From 115th Ave SW to SW 240th Pl	Replace seawall	\$ 21,150,000		Vashon/Maury Island
RC-54	Vulnerable Road Segments	Carryover from 2016 TNR	SW Governors Lane: From 99th Ave SW to 96th Ave SW	Replace seawall	\$ 3,780,000		Vashon/Maury Island
RC-59	Vulnerable Road Segments	Carryover from 2016 TNR	Kingsbury Rd SW: From SW 234th St to 80th Ave SW	Reconstruct roadway	\$ 779,000		Vashon/Maury Island

Appendix A

Map Number 3: White Center/Skyway

TNR Project Number	TNR Category	Project Status*	Location	Scope	Estimated Cost	Notes	Community Service Area
OP-RD-12	Capacity-Major	Carryover from 2016 TNR	8th Ave S: From Seattle city limits to Burien city limits (S 112th St)	Construct congestion relief measures	\$ 11,500,000		West King County Areas
OP-RD-14	Capacity-Major	Carryover from 2016 TNR	6th Ave S: From Myers Way S to 5th Ave S	Construct congestion relief measures	\$ 4,400,000		West King County Areas
DR-20-21	Drainage	New for 2020 TNR	SW 108 St at 10 AVE SW	Replace/construct drainage infrastructure	\$ 600,000		West King County Areas
DR-20-23	Drainage	New for 2020 TNR	S 120 St at 75 AVE S	Replace/construct drainage infrastructure	\$ 150,000		West King County Areas
DR-20-29	Drainage	New for 2020 TNR	S Langston Rd at 132 AVE SE	Replace/construct drainage infrastructure	\$ 450,000		West King County Areas
DR-15-5	Drainage	Carryover from 2016 TNR	S 96th St: From 4th Ave S to 10th Ave S	Replace/construct drainage infrastructure	\$ 550,000		West King County Areas
DR-15-6	Drainage	Carryover from 2016 TNR	S 96th St: From 4th Ave S to 10th Ave S	Replace/construct drainage infrastructure	\$ 3,286,000		West King County Areas
DR-6	Drainage	Carryover from 2016 TNR	60th Ave S/S Langston Rd: From S 129th St to S 124th St	Replace/construct drainage infrastructure	\$ 634,000		West King County Areas
DR-15-4	Drainage	Deleted	S 96th St: From 4th Ave S to 10th Ave S	Replace/construct drainage infrastructure	\$ -	Project no longer a Roads project, reassigned to DNRP	West King County Areas
GR-15-2	Guardrail	Completed	S 123rd St: From S 124th St to S 125th St	Construct guardrail	\$ -		West King County Areas
GR-15-6	Guardrail	Completed	S 132nd St: From State Route 900 to S Langston Rd	Construct guardrail	\$ -		West King County Areas
GR-15-7	Guardrail	Completed	21st Ave SW: From SW 100th St to SW 106th St	Construct guardrail	\$ -		West King County Areas
GR-15-9	Guardrail	Completed	W Marginal PI S: From Tukwila city limits to S 95th St	Construct guardrail	\$ -		West King County Areas
INT-TSO-20-12	Intersection and Traffic Safety Operations	New for 2020 TNR	64th Ave S & S 129th St	Intersection Improvement	\$ 4,800,000		West King County Areas
OP-INT-79	Intersection and Traffic Safety Operations	Deleted	87th Ave S: From Stevens Ave NW/Taylor PI NW to S 123rd PI	Realign intersection	\$ -	Project determined to be outside of TNR planning horizon.	West King County Areas

Appendix A

Map Number 3: White Center/Skyway

TNR Project Number	TNR Category	Project Status*	Location	Scope	Estimated Cost	Notes	Community Service Area
ITS-12	ITS	Carryover from 2016 TNR	Renton Ave S: From Seattle city limits (S 112th St) to Renton city limits (S 130th St)	Cameras, vehicle detection, sync signals, fiber	\$ 250,000		West King County Areas
ITS-26	ITS	Deleted	1st Ave S, SW 100th St to SW 112th St	Cameras, vehicle detection, synchronize signals	\$ -	No longer on traffic safety priority array	West King County Areas
ITS-33	ITS	Deleted	Rainier Ave S: From Seattle city limits to Renton city limits	Cameras, vehicle detection, synchronize signals	\$ -	No longer on traffic safety priority array	West King County Areas
NM-20-18	Non-Motorized	New for 2020 TNR	Renton Avenue S between 68th Avenue S and Seattle City Limits (S 112th Street)	Provide non-motorized facility	\$ 3,740,000		West King County Areas
NM-20-22	Non-Motorized	New for 2020 TNR	S Langston Rd between S 132nd St and 76th Avenue S	Provide non-motorized facility	\$ 880,000		West King County Areas
NM-20-23	Non-Motorized	New for 2020 TNR	69th Avenue S/S 125th Street between S 128th Street and 70th Avenue S	Provide non-motorized facility	\$ 400,000		West King County Areas
NM-20-6	Non-Motorized	New for 2020 TNR	8th Ave S: S 105th St to S 100th St	Provide non-motorized facility	\$ 1,010,000		West King County Areas
IPA-35	Non-Motorized	Carryover from 2016 TNR	Renton Ave S: From 74th Ave S to 75th Ave S	Provide non-motorized facility	\$ 910,000		West King County Areas
IPA-36	Non-Motorized	Carryover from 2016 TNR	Renton Ave S: From 76th Ave S to 78th Ave S	Provide non-motorized facility	\$ 300,000		West King County Areas
IPA-37	Non-Motorized	Carryover from 2016 TNR	S 114th St: From Cornell Ave S to 80th Ave S	Provide non-motorized facility	\$ 1,320,000		West King County Areas
IPA-38	Non-Motorized	Carryover from 2016 TNR	S 126th St: From 76th Ave S to 78th Ave S	Provide non-motorized facility	\$ 260,000		West King County Areas
NM-0004	Non-Motorized	Carryover from 2016 TNR	76th Ave S: S 114th St to S 116th St	Provide non-motorized facility	\$ 550,000		West King County Areas
NM-0302	Non-Motorized	Carryover from 2016 TNR	1st Ave SW: From SW 108th St to SW 112th St	Provide non-motorized facility	\$ 920,000		West King County Areas
NM-15-1	Non-Motorized	Carryover from 2016 TNR	S Langston Rd: From 64th Ave S to S 132nd St	Provide non-motorized facility	\$ 4,050,000		West King County Areas
NM-15-10	Non-Motorized	Carryover from 2016 TNR	14th Ave SW: SW 110th St to SW 114th St	Provide non-motorized facility	\$ 620,000		West King County Areas
NM-15-2	Non-Motorized	Carryover from 2016 TNR	S 132nd St: From S Langston Rd to S 133rd St	Provide non-motorized facility	\$ 1,280,000		West King County Areas
NM-15-3	Non-Motorized	Carryover from 2016 TNR	S 120th St: From Beacon Ave S to 68th Ave S	Provide non-motorized facility	\$ 2,200,000		West King County Areas

Appendix A

Map Number 3: White Center/Skyway

TNR Project Number	TNR Category	Project Status*	Location	Scope	Estimated Cost	Notes	Community Service Area
NM-15-4	Non-Motorized	Carryover from 2016 TNR	S 133rd St: From State Route 900 to S 132nd St	Provide non-motorized facility	\$ 9,110,000		West King County Areas
NM-15-5	Non-Motorized	Carryover from 2016 TNR	84th Ave S: From Rainier Ave S to S 124th St	Provide non-motorized facility	\$ 12,730,000		West King County Areas
NM-15-6	Non-Motorized	Carryover from 2016 TNR	S 120th Pl: From 68th Ave S to Skyway Park	Provide non-motorized facility	\$ 890,000		West King County Areas
NM-15-7	Non-Motorized	Carryover from 2016 TNR	S 123rd St: From S 125th St to S 124th St	Provide non-motorized facility	\$ 1,390,000		West King County Areas
NM-15-8	Non-Motorized	Carryover from 2016 TNR	81st Pl S/S 124th St: From SE side of middle school to 84th Ave S	Provide non-motorized facility	\$ 1,450,000		West King County Areas
NM-4012	Non-Motorized	Carryover from 2016 TNR	80th Ave S: From S 114th St to S 118th St	Provide non-motorized facility	\$ 320,000		West King County Areas
NM-4077	Non-Motorized	Carryover from 2016 TNR	SW 112th St: From 16th Ave SW to 10th Ave SW	Provide non-motorized facility	\$ 1,760,000		West King County Areas
NM-5018	Non-Motorized	Carryover from 2016 TNR	SW 104th St: From 15th Ave SW to 17th Ave SW	Provide non-motorized facility	\$ 1,780,000		West King County Areas
NM-5020	Non-Motorized	Carryover from 2016 TNR	8th Ave SW: From SW 108th St to SW 100th St	Provide non-motorized facility	\$ 3,910,000		West King County Areas
NM-5021	Non-Motorized	Carryover from 2016 TNR	76th Ave S: From S 124th St to S 128th St	Provide non-motorized facility	\$ 760,000		West King County Areas
NM-9920	Non-Motorized	Carryover from 2016 TNR	28th Ave SW: From SW Roxbury St to SW 102nd St	Provide non-motorized facility	\$ 330,000		West King County Areas
NM-9922	Non-Motorized	Carryover from 2016 TNR	SW 112th St: From 16th Ave SW to 26th Ave SW	Provide non-motorized facility	\$ 890,000		West King County Areas
NM-9930	Non-Motorized	Carryover from 2016 TNR	SW 112th St: From 1st Ave S to 4th Ave SW	Provide non-motorized facility	\$ 1,120,000		West King County Areas
NM-9936	Non-Motorized	Carryover from 2016 TNR	75th Ave S / S 122nd St: From Renton Ave S to 80th Ave S	Provide non-motorized facility	\$ 810,000		West King County Areas
NM-9937	Non-Motorized	Carryover from 2016 TNR	S 120th St: From 76th Ave S to 80th Ave S	Provide non-motorized facility	\$ 570,000		West King County Areas
NM-9938	Non-Motorized	Carryover from 2016 TNR	78th Ave S: From S 120th St to S 124th St	Provide non-motorized facility	\$ 1,430,000		West King County Areas
NM-9939	Non-Motorized	Carryover from 2016 TNR	76th Ave S: From S 120th St to S 124th St	Provide non-motorized facility	\$ 570,000		West King County Areas
NM-5017	Non-Motorized	Completed	SW 102nd St: From 8th Ave SW to 17th AVE SW	Provide non-motorized facility	\$ -		West King County Areas
RC-41	Vulnerable Road Segments	Carryover from 2016 TNR	68th Ave S: From State Route 900 to Renton city limits	Construct retaining wall	\$ 2,948,000		West King County Areas

Appendix A

Map Number 4: Kent/Des Moines

TNR Project Number	TNR Category	Project Status*	Location	Scope	Estimated Cost	Notes	Community Service Area
BR-3110	Bridge	New for 2020 TNR	Soos Creek	Replace bridge	\$ 2,006,000		West King County Areas
BR-3108	Bridge	Carryover from 2016 TNR	Soos Creek Bridge: 148th Ave SE at Soos Creek, about 0.2 mile north of SE 240th	Replace bridge	\$ 2,461,000		West King County Areas
BR-3109A	Bridge	Carryover from 2016 TNR	Soos Creek Bridge: SE 216th St at Big Soos Creek, about 0.3 mile east of 132nd Ave SE	Replace bridge	\$ 1,848,000		West King County Areas, Greater Maple Valley/ Cedar River
BR-3109B	Bridge	Carryover from 2016 TNR	Lake Youngs Way Bridge: SE Lake Youngs Way at Big Soos Creek. 0.3 miles northeast of SE 208th St	Replace bridge	\$ 2,043,000		West King County Areas
BR-3126	Bridge	Carryover from 2016 TNR	S 277th St Bridge: Mullen Slough, west of State Route 167	Replace bridge	\$ 1,751,000		SE King County
BR-3109	Bridge	Deleted	Soos Creek Bridge: SE 224th St at Soos Creek, about 0.3 mile east of 132nd Ave SE	Replace bridge	\$ -	Project determined to be outside of TNR planning horizon.	West King County Areas
CP-15-6	Capacity-Major	Carryover from 2016 TNR	S 277th St & 55th Ave S / S Star Lake Rd	Construct congestion relief measures	\$ 4,300,000		West King County Areas
CP-5	Capacity-Major	Carryover from 2016 TNR	Military Rd S: From S 272nd St to S Star Lake Rd	Construct congestion relief measures	\$ 7,700,000		West King County Areas
DR-20-48	Drainage	New for 2020 TNR	20530 140 Av SE	Replace/construct drainage infrastructure	\$ 750,000		Greater Maple Valley/ Cedar River
DR-20-57	Drainage	New for 2020 TNR	21015 148 Av SE	Replace/construct drainage infrastructure	\$ 900,000		Greater Maple Valley/ Cedar River
DR-15-10	Drainage	Carryover from 2016 TNR	West Valley Hwy N, 1300 Ft S of S 277th	Replace/construct drainage infrastructure	\$ 781,000		SE King County
DR-15-9	Drainage	Carryover from 2016 TNR	Green River Rd S & 94th Pl S	Replace/construct drainage infrastructure	\$ 1,384,000		West King County Areas
DR-2	Drainage	Carryover from 2016 TNR	S 277th St & 55th Ave S	Replace pipe, retaining wall, and signal	\$ 2,500,000		West King County Areas
GR-15-29	Guardrail	Carryover from 2016 TNR	S 282nd St: From 46th Ave SE to 48th Ave SE	Construct guardrail	\$ 40,000		West King County Areas
GR-15-39	Guardrail	Completed	94th Pl S: From Kent city limits to Green River Rd	Construct guardrail	\$ -		West King County Areas

Appendix A

Map Number 4: Kent/Des Moines

TNR Project Number	TNR Category	Project Status*	Location	Scope	Estimated Cost	Notes	Community Service Area
INT-TSO-20-3	Intersection and Traffic Safety Operations	New for 2020 TNR	48th Ave S & S 288th St	Intersection Improvement	\$ 1,800,000		West King County Areas
INT-TSO-20-7	Intersection and Traffic Safety Operations	New for 2020 TNR	148th Ave SE & SE 208th St	Intersection Improvement	\$ 300,000		Greater Maple Valley/ Cedar River
OP-INT-120	Intersection and Traffic Safety Operations	Carryover from 2016 TNR	40th Ave S & S 272nd St	Add turn lanes on 272nd, rebuild traffic signal	\$ 4,100,000		West King County Areas
SW-20	Intersection and Traffic Safety Operations	Carryover from 2016 TNR	148th Ave SE & SE 224th St	Intersection Improvement	\$ 3,500,000		Greater Maple Valley/ Cedar River
IPA-3	Intersection and Traffic Safety Operations	Completed	S 288th St: From Federal Way city limits (I-5) to Auburn city limits (51st Ave S)	Restripe road from 4 to 3 lanes, modify the signal	\$ -		West King County Areas
NM-20-17	Non-Motorized	New for 2020 TNR	S 304th Street between 32nd Ave S and 37th Ave S	Provide non-motorized facility	\$ 310,000		West King County Areas
NM-20-19	Non-Motorized	New for 2020 TNR	42nd Avenue S vicinity S 278th Street	Provide non-motorized facility	\$ 150,000		West King County Areas
NM-20-20	Non-Motorized	New for 2020 TNR	S 298th Street between 36th Place S and 39th Place S	Provide non-motorized facility	\$ 280,000		West King County Areas
NM-20-25	Non-Motorized	New for 2020 TNR	Military Rd S from SR 516 to S 240th St	Provide non-motorized facility	\$ 3,120,000		West King County Areas
NM-20-26	Non-Motorized	New for 2020 TNR	Military Rd S from S 272nd St to S Star Lake Rd	Provide non-motorized facility	\$ 1,940,000		West King County Areas
NM-20-8	Non-Motorized	New for 2020 TNR	S 285th Pl: 46th Ave S to 48th Ave S	Provide non-motorized facility	\$ 260,000		West King County Areas
NM-5015	Non-Motorized	Carryover from 2016 TNR	Green River Rd: From Kent city limits (S 259th St) to Kent city limits (S 277th St)	Provide non-motorized facility	\$ 4,850,000		West King County Areas

Appendix A

Map Number 4: Kent/Des Moines

TNR Project Number	TNR Category	Project Status*	Location	Scope	Estimated Cost	Notes	Community Service Area
NM-5038	Non-Motorized	Carryover from 2016 TNR	SE 208th St: From 148th Ave SE to Kent city limits	Provide non-motorized facility	\$ 3,080,000		Greater Maple Valley/ Cedar River, West King County Areas
NM-9970	Non-Motorized	Carryover from 2016 TNR	34th Ave S: From S 288th St to S 298th St	Provide non-motorized facility	\$ 1,190,000		West King County Areas
NM-9971	Non-Motorized	Carryover from 2016 TNR	36th Pl S/ S 294 St/ 45 Pl S: From S 298th St to S 288th St	Provide non-motorized facility	\$ 2,070,000		West King County Areas
NM-4042	Non-Motorized	Completed	38th Ave S: From S 304th St to S 308th St	Provide non-motorized facility	\$ -		West King County Areas
VRS-20-14	Vulnerable Road Segments	New for 2020 TNR	S 272nd Way debris slump	Construct retaining wall	\$ 1,000,000		West King County Areas
RC-24	Vulnerable Road Segments	Carryover from 2016 TNR	S 304th St: From 32nd Ave S to 37th Ave S	Armor shoulders to reduce road washouts	\$ 271,000		West King County Areas
BR-3014	Bridge	New for 2020 TNR	Neely Bridge	Replace bridge	\$ 15,322,000		SE King County
BR-3015	Bridge	Carryover from 2016 TNR	Patton Bridge: SE Green Valley Rd at Green River, about 1.5 miles southeast of Highway 18	Replace bridge	\$ 24,432,000		SE King County
DR-20-13	Drainage	New for 2020 TNR	S 370 St east of Enchanted Parkway S	Replace/construct drainage infrastructure	\$ 630,000		West King County Areas
DR-20-37	Drainage	New for 2020 TNR	13405 Auburn Black Diamond Rd	Replace/construct drainage infrastructure	\$ 900,000		SE King County
INT-TSO-20-1	Intersection and Traffic Safety Operations	New for 2020 TNR	28th Ave S & S 360th St	Intersection Improvement	\$ 3,500,000		West King County Areas
INT-TSO-20-2	Intersection and Traffic Safety Operations	New for 2020 TNR	Military Rd S & S 342nd St	Intersection Improvement	\$ 2,000,000		West King County Areas
INT-TSO-20-4	Intersection and Traffic Safety Operations	New for 2020 TNR	Military Rd S & 42nd Ave S	Construct turn lanes	\$ 1,900,000		West King County Areas

Appendix A

Map Number 5: East Federal Way

TNR Project Number	TNR Category	Project Status*	Location	Scope	Estimated Cost	Notes	Community Service Area
INT-TSO-20-9	Intersection and Traffic Safety Operations	New for 2020 TNR	SE Auburn Black Diamond Rd & Green Valley Rd	Intersection Improvement	\$ 1,800,000		SE King County
IPA-25	Intersection and Traffic Safety Operations	Carryover from 2016 TNR	Military Rd S & S 360th St	Intersection Improvement	\$ 4,100,000		West King County Areas
OP-INT-100	Intersection and Traffic Safety Operations	Carryover from 2016 TNR	S 321st St: From S Peasley Canyon Rd to 46th Pl S	Reconstruct 321st St approach; expand turn lanes	\$ 3,800,000		West King County Areas
OP-RD-48	Intersection and Traffic Safety Operations	Carryover from 2016 TNR	S 360th St: From State Route 161 to 28th Ave S	Construct turn lanes	\$ 7,900,000		West King County Areas
SW-21	Intersection and Traffic Safety Operations	Carryover from 2016 TNR	51st Ave S & S 316th St	Intersection Improvement	\$ 3,500,000		West King County Areas
SW-73	Intersection and Traffic Safety Operations	Carryover from 2016 TNR	46th Pl S & S 321st St	Intersection Improvement	\$ 3,500,000		West King County Areas
ITS-8	ITS	Completed	S Peasley Canyon Rd: From Military Rd S to Peasley Canyon Way S	Upgrade signal equipment and coordinate timing	\$ -		West King County Areas
NM-20-21	Non-Motorized	New for 2020 TNR	S 360th Street 32nd Avenue South to Sequoyah Middle School	Provide non-motorized facility	\$ 390,000		West King County Areas
NM-20-27	Non-Motorized	New for 2020 TNR	Military Rd S from 31st Ave S to S 320th	Provide non-motorized facility	\$ 11,400,000		West King County Areas
NM-20-9	Non-Motorized	New for 2020 TNR	S 308th St: 38th Ave S to 42nd Ave S	Provide non-motorized facility	\$ 240,000		West King County Areas
NM-4066	Non-Motorized	Carryover from 2016 TNR	28th Ave S: From S 349 St to S 360th St	Provide non-motorized facility	\$ 1,650,000		West King County Areas
NM-4067	Non-Motorized	Completed	32nd Ave S: From S 360th St to S 368th St	Provide non-motorized facility	\$ -		West King County Areas

Appendix A

Map Number 5: East Federal Way

TNR Project Number	TNR Category	Project Status*	Location	Scope	Estimated Cost	Notes	Community Service Area
NM-5014	Non-Motorized	Carryover from 2016 TNR - scope change	Military Rd S: From Federal Way City Limits to State Route 161	Provide non-motorized facility	\$ 38,720,000	Project area extended to city limits	West King County Areas
RC-137	Reconstruction	Carryover from 2016 TNR	SE Auburn Black Diamond Rd: From Highway 18 to SE Green Valley Rd	Reconstruct roadway	\$ 869,000		SE King County
RC-138	Reconstruction	Carryover from 2016 TNR	SE Auburn Black Diamond Rd: From SE Green Valley Rd to SE Lake Holm Dr	Reconstruct roadway	\$ 965,000		SE King County
RC-139	Reconstruction	Carryover from 2016 TNR	SE Auburn Black Diamond Rd: From SE Lake Holm Rd to 148th Way SE	Reconstruct roadway	\$ 10,969,000		SE King County
RC-140	Reconstruction	Carryover from 2016 TNR	SE Lake Holm Rd: From SE Auburn Black Diamond Rd to 147th Ave SE	Reconstruct roadway	\$ 8,249,000		SE King County
VRS-20-16	Vulnerable Road Segments	New for 2020 TNR	S Peasley Canyon Road Shallow Debris Slide	Construct retaining wall	\$ 10,000,000		West King County Areas
VRS-20-5	Vulnerable Road Segments	New for 2020 TNR	SE Green Valley Road	Elevate roadway	\$ 100,000		SE King County
RC-42	Vulnerable Road Segments	Carryover from 2016 TNR	Peasley Canyon Way S: From S Peasley Canyon Rd to Military Rd S	Construct retaining wall	\$ 747,000		West King County Areas

Appendix A

Map Number 6: Woodinville

TNR Project Number	TNR Category	Project Status*	Location	Scope	Estimated Cost	Notes	Community Service Area
333A	Bridge	Carryover from 2016 TNR	Bear Creek Bridge: NE 133rd St at Bear Creek, east of Bear Creek Rd NE	Replace bridge	\$ 2,589,000		Bear Creek/Sammamish
BR-1136B	Bridge	Carryover from 2016 TNR	Woodinville-Duvall Road Bridge Duvall Slough: NE Woodinville Duvall RD 0.3 mile west of State Route 203	Replace bridge	\$ 55,732,000		Snoqualmie Valley NE King County
BR-1136C	Bridge	Carryover from 2016 TNR	Woodinville-Duvall Road Bridge: NE Woodinville Duvall Rd 0.6 mile west of State Route 203	Replace bridge	\$ 9,850,000		Snoqualmie Valley NE King County
BR-1136D	Bridge	Carryover from 2016 TNR	Woodinville-Duvall Road Bridge: NE Woodinville Duvall Rd 0.8 mile west of State Route 203	Replace bridge	\$ 6,019,000		Snoqualmie Valley NE King County
BR-1136E	Bridge	Carryover from 2016 TNR	Woodinville-Duvall Road Bridge: NE Woodinville Duvall Rd 0.9 mile west of State Route 203	Replace bridge	\$ 4,925,000		Snoqualmie Valley NE King County
BR-240A	Bridge	Carryover from 2016 TNR	Cottage Lake Creek Bridge: NE 132nd St at Cottage Lake Creek, east of Avondale Rd NE	Replace bridge	\$ 2,727,000		Bear Creek/Sammamish
BR-480A	Bridge	Carryover from 2016 TNR	Bear Creek Bridge: NE 116th St at Bear Creek, east of Avondale Rd NE	Replace bridge	\$ 1,613,000		West King County Areas, Bear Creek/Sammamish
BR-5011	Bridge	Deleted	Walter Shults Bridge: NE 106th St at Lower Bear Creek , east of Avondale Rd NE	Replace bridge	\$ -	Project determined to be outside of TNR planning horizon.	Bear Creek/Sammamish
CP-12	Capacity-Major	Carryover from 2016 TNR	Woodinville-Duvall Rd: 171st Ave NE to Avondale Rd NE	Construct congestion relief measures	\$ 16,500,000		Bear Creek/Sammamish
CP-15-3	Capacity-Major	Carryover from 2016 TNR	W Snoqualmie Valley Rd: From NE 124th St to NE Novelty Hill Rd	Construct congestion relief measures	\$ 9,100,000		Snoqualmie Valley NE King County
CP-15-5	Capacity-Major	Carryover from 2016 TNR	Avondale Rd NE: From NE 133rd St to NE Woodinville Duvall Rd	Construct congestion relief measures	\$ 44,000,000		Bear Creek/Sammamish

Appendix A

Map Number 6: Woodinville

TNR Project Number	TNR Category	Project Status*	Location	Scope	Estimated Cost	Notes	Community Service Area
CP-15-8	Capacity-Major	Carryover from 2016 TNR	NE Novelty Hill Rd: From 243rd Ave NE to W Snoqualmie Valley Rd NE	Construct congestion relief measures	\$ 81,800,000		Bear Creek/Sammamish
CP-16	Capacity-Major	Carryover from 2016 TNR	NE Woodinville Duvall Rd: From Avondale Rd NE to 194th Ave NE	Construct congestion relief measures	\$ 3,800,000		Bear Creek/Sammamish
CP-8	Capacity-Major	Carryover from 2016 TNR	Novelty Hill Rd: From 197th PI NE to 234th PI NE	Construct congestion relief measures	\$ 44,000,000		Bear Creek/Sammamish
OP-RD-52	Capacity-Major	Carryover from 2016 TNR	NE 128th St/Avondale Rd NE/NE 132nd St: 181st Ave NE to NE 133rd St	Construct congestion relief measures	\$ 34,000,000		Bear Creek/Sammamish, West King County Areas
CP-15-7	Capacity-Major	Deleted	NE Woodinville Duvall Rd & 194th Ave NE	Construct congestion relief measures	\$ -	Moved to Intersection Priority Array and Traffic Safety Operations Category	Bear Creek/Sammamish
DR-20-12	Drainage	New for 2020 TNR	NE Woodinville Duvall Rd at NE 172 St	Replace/construct drainage infrastructure	\$ 2,228,000		Bear Creek/Sammamish
DR-20-3	Drainage	New for 2020 TNR	18430 NE 128 St	Replace/construct drainage infrastructure	\$ 1,710,000		Bear Creek/Sammamish
DR-20-31	Drainage	New for 2020 TNR	243 AVE NE at NE Novelty Hill Rd	Replace/construct drainage infrastructure	\$ 150,000		Bear Creek/Sammamish
DR-20-33	Drainage	New for 2020 TNR	NE 138 ST WEST & SR 203	Replace/construct drainage infrastructure	\$ 450,000		Snoqualmie Valley NE King County
DR-20-41	Drainage	New for 2020 TNR	15165 148 Av NE	Replace/construct drainage infrastructure	\$ 900,000		Bear Creek/Sammamish
DR-20-47	Drainage	New for 2020 TNR	NE 133 St & 227 Ave NE	Replace/construct drainage infrastructure	\$ 750,000		Bear Creek/Sammamish

Appendix A

Map Number 6: Woodinville

TNR Project Number	TNR Category	Project Status*	Location	Scope	Estimated Cost	Notes	Community Service Area
DR-20-50	Drainage	New for 2020 TNR	17502 NE 131 St	Replace/construct drainage infrastructure	\$ 600,000		West King County Areas
DR-20-53	Drainage	New for 2020 TNR	148 Av NE & 140 PI NE	Replace/construct drainage infrastructure	\$ 900,000		Bear Creek/Sammamish
DR-20-54	Drainage	New for 2020 TNR	148Th Ave NE & 140Th PI NE	Replace/construct drainage infrastructure	\$ 900,000		Bear Creek/Sammamish
DR-20-56	Drainage	New for 2020 TNR	16116 140 PI NE	Replace/construct drainage infrastructure	\$ 1,200,000		Bear Creek/Sammamish
DR-20-59	Drainage	New for 2020 TNR	NE Woodinville-Duvall Rd @ NE Old Woodinville-Duvall Rd	Replace/construct drainage infrastructure	\$ 1,200,000		Bear Creek/Sammamish
DR-20-60	Drainage	New for 2020 TNR	187Th Ave NE & NE 161St PI	Replace/construct drainage infrastructure	\$ 600,000		Bear Creek/Sammamish
DR-20-61	Drainage	New for 2020 TNR	20229 NE 198 St	Replace/construct drainage infrastructure	\$ 600,000		Bear Creek/Sammamish
DR-20-69	Drainage	New for 2020 TNR	19020 NE Woodinville/Duvall Rd	Replace/construct drainage infrastructure	\$ 1,500,000		Bear Creek/Sammamish
DR-20-7	Drainage	New for 2020 TNR	Avondale Rd NE at NE 144 PL	Replace/construct drainage infrastructure	\$ 2,130,000		Bear Creek/Sammamish
DR-20-70	Drainage	New for 2020 TNR	12527 183 Av NE	Replace/construct drainage infrastructure	\$ 300,000		West King County Areas
DR-20-8	Drainage	New for 2020 TNR	NE 165 St at 176 NE	Replace/construct drainage infrastructure	\$ 1,290,000		Bear Creek/Sammamish
DR-15-1	Drainage	Carryover from 2016 TNR	185th Ave NE, north of NE 179th St	Elevate roadway	\$ 1,296,000		Bear Creek/Sammamish
DR-15-7	Drainage	Carryover from 2016 TNR	NE 124th St & 162nd PI NE	Replace/construct drainage infrastructure	\$ 556,000		Bear Creek/Sammamish
DR-15-8	Drainage	Completed	NE 124th St: From 570 Ft W of 164th Ave NE	Replace/construct drainage infrastructure	\$ -		Bear Creek/Sammamish
GR-15-17	Guardrail	Carryover from 2016 TNR	Mink Rd NE: From Bear Creek Rd NE to NE Woodinville Duvall Rd	Construct guardrail	\$ 180,000		Bear Creek/Sammamish
GR-15-21	Guardrail	Carryover from 2016 TNR	NE Redmond Rd: From NE Novelty Hill Rd and 204th Ave NE	Construct guardrail	\$ 100,000		Bear Creek/Sammamish
GR-15-22	Guardrail	Carryover from 2016 TNR	222nd Way NE: From NE Woodinville Duvall Rd and NE 194th St	Construct guardrail	\$ 100,000		Bear Creek/Sammamish

Appendix A

Map Number 6: Woodinville

TNR Project Number	TNR Category	Project Status*	Location	Scope	Estimated Cost	Notes	Community Service Area
GR-15-26	Guardrail	Carryover from 2016 TNR	232nd Ave NE: From NE 133rd St to Old Woodinville Duvall Rd	Construct guardrail	\$ 150,000		Bear Creek/Sammamish
GR-15-1	Guardrail	Completed	204th Ave NE: From NE Woodinville Duvall Rd to Snohomish County line	Construct guardrail	\$ -		Bear Creek/Sammamish
GR-15-13	Guardrail	Completed	148th Ave NE: 140th Pl NE to NE 172nd St	Construct guardrail	\$ -		Bear Creek/Sammamish
GR-15-4	Guardrail	Completed	236th Ave NE: From NE Woodinville Duvall Rd to NE 184th St	Construct guardrail	\$ -		Bear Creek/Sammamish
INT-TSO-20-11	Intersection and Traffic Safety Operations	New for 2020 TNR	Novelty Hill Rd & NE Redmond Rd	Construct roundabout	\$ 2,800,000		Bear Creek/Sammamish
INT-TSO-20-13	Intersection and Traffic Safety Operations	New for 2020 TNR	NE Woodinville-Duvall Rd & 194th Ave NE	Construct turn lanes	\$ 1,700,000		Bear Creek/Sammamish
IPA-23	Intersection and Traffic Safety Operations	Carryover from 2016 TNR	162nd Pl NE & NE 124th St	Intersection Improvement	\$ 2,700,000		West King County Areas
IPA-40	Intersection and Traffic Safety Operations	Carryover from 2016 TNR	NE Woodinville-Duvall Rd & West Snoqualmie Valley Rd NE	Intersection and drainage improvements	\$ 5,700,000		Snoqualmie Valley NE King County, Bear Creek/Sammamish
OP-INT-122	Intersection and Traffic Safety Operations	Carryover from 2016 TNR	NE 124th St & West Snoqualmie Valley Rd NE	Construct turn pockets and replace signal	\$ 3,400,000		Snoqualmie Valley NE King County
OP-INT-81	Intersection and Traffic Safety Operations	Carryover from 2016 TNR	155th Ave NE & NE 146th Pl	Reconstruct intersection to improve sight distance	\$ 2,200,000		Bear Creek/Sammamish
OP-INT-99	Intersection and Traffic Safety Operations	Carryover from 2016 TNR	Avondale Road NE & NE 165th St	Turn lanes, replace traffic signal	\$ 3,700,000		Bear Creek/Sammamish

Appendix A

Map Number 6: Woodinville

TNR Project Number	TNR Category	Project Status*	Location	Scope	Estimated Cost	Notes	Community Service Area
ITS-13	ITS	Carryover from 2016 TNR	NE Woodinville Duvall Rd: From 212th Ave NE to Duvall city limits	Install weather sensors, travel time equipment	\$ 120,000		Bear Creek/Sammamish, Snoqualmie Valley NE King County
ITS-16	ITS	Carryover from 2016 TNR	NE 124th Way/NE 128th St: From Redmond city limits to Avondale Road NE	Cameras, vehicle and flood detection	\$ 3,701,000		West King County Areas, Bear Creek/Sammamish
ITS-18	ITS	Carryover from 2016 TNR	W Snoqualmie Valley Rd NE: From NE Woodinville Duvall Road to Ames Lake Carnation Rd NE	Vehicle detection, flood detection, cameras	\$ 835,000		Snoqualmie Valley NE King County
ITS-35	ITS	Carryover from 2016 TNR - scope change	NE Novelty Hill Rd: From 208th Ave NE to West Snoqualmie Valley Road	Weather sensors, travel time, and EB DMS	\$ 200,000	Signal synchronization completed and removed from scope	Bear Creek/Sammamish
NM-20-7	Non-Motorized	New for 2020 TNR	NE 150th St: 216th Ave NE to 221st Ave NE	Provide non-motorized facility	\$ 1,240,000		Bear Creek/Sammamish
NM-5001	Non-Motorized	Carryover from 2016 TNR	204th Ave NE/NE 198th St/197th Ave: From NE Woodinville Duvall Rd to Snohomish County line	Provide non-motorized facility	\$ 9,150,000		Bear Creek/Sammamish
NM-5002	Non-Motorized	Carryover from 2016 TNR	NE Woodinville Duvall Rd: From Avondale Rd NE to Duvall city limits	Provide non-motorized facility	\$ 24,070,000		Bear Creek/Sammamish, Snoqualmie Valley NE King County
NM-5026	Non-Motorized	Carryover from 2016 TNR	172nd Ave NE: From NE 134th PI to NE 125th St	Provide non-motorized facility	\$ 2,720,000		West King County Areas
NM-5027	Non-Motorized	Carryover from 2016 TNR	171st/174th Ave NE: From NE Woodinville Duvall Rd to NE 172nd PI	Provide non-motorized facility	\$ 2,870,000		Bear Creek/Sammamish
OP-RD-18	Reconstruction	Carryover from 2016 TNR	NE 175 St/NE 172nd PI NE: From 164th Ave NE to 174th Ave NE	Reconstruct roadway	\$ 3,159,000		Bear Creek/Sammamish
OP-RD-45	Reconstruction	Carryover from 2016 TNR	232nd Ave NE: From NE 142nd PI to Old Woodinville Duvall Rd	Reconstruct roadway	\$ 8,205,000		Bear Creek/Sammamish

Appendix A

Map Number 6: Woodinville

TNR Project Number	TNR Category	Project Status*	Location	Scope	Estimated Cost	Notes	Community Service Area
OP-RD-7	Reconstruction	Carryover from 2016 TNR	NE 165th St: From 179th PI NE to 183rd PI NE	Reconstruct roadway	\$ 2,589,000		Bear Creek/ Sammamish
OP-RD-9	Reconstruction	Carryover from 2016 TNR	NE Old Woodinville-Duvall Rd: From NE Woodinville-Duvall Rd to NE Woodinville-Duvall Rd	Reconstruct roadway	\$ 8,424,000		Bear Creek/ Sammamish
RC-113	Reconstruction	Carryover from 2016 TNR	West Snoqualmie Valley Rd NE: From NE 124th St to NE Novelty Hill Rd	Reconstruct roadway	\$ 1,667,000		Snoqualmie Valley NE King County
RC-151	Reconstruction	Carryover from 2016 TNR	Avondale Rd NE: From NE 133rd St to NE Woodinville Duvall Road	Reconstruct roadway	\$ 31,458,000		Bear Creek/ Sammamish
VRS-20-20	Vulnerable Road Segments	New for 2020 TNR	NE 124 St east of 162 Way NE	Reinforce slope	\$ 500,000		West King County Areas
RC-150	Vulnerable Road Segments	Carryover from 2016 TNR	West Snoqualmie Valley Rd NE: From Snohomish County line to NE Woodinville Duvall Rd	Replace seawall	\$ 4,095,000		Snoqualmie Valley NE King County
RC-39	Vulnerable Road Segments	Carryover from 2016 TNR	West Snoqualmie Valley Rd NE: From NE 124th St to Ames Lake Carnation Rd NE	Replace seawall	\$ 4,388,000		Snoqualmie Valley NE King County
RC-43	Vulnerable Road Segments	Carryover from 2016 TNR	NE Woodinville Duvall Rd: From Old Woodinville-Duvall Rd to W Snoqualmie Valley Rd NE	Construct retaining wall	\$ 654,000		Bear Creek/ Sammamish, Snoqualmie Valley NE King County
RC-48	Vulnerable Road Segments	Carryover from 2016 TNR	NE 146th PI: From Woodinville city limits to 155th Ave NE	Construct retaining wall	\$ 155,000		Bear Creek/ Sammamish

Appendix A

Map Number 7: Redmond/Sammamish

TNR Project Number	TNR Category	Project Status*	Location	Scope	Estimated Cost	Notes	Community Service Area
BR-180A	Bridge	New for 2020 TNR	Evans Creek Bridge: NE 50th St, about 0.1 mile west of State Route 202	Replace bridge	\$ 1,693,000		Bear Creek/Sammamish
BR-578A	Bridge	Deleted	Evans Creek Bridge: 196th Ave NE & State Route 202 at Evans Creek	Replace bridge	\$ -	Project determined to be outside of TNR planning horizon.	Bear Creek/Sammamish
CP-15-1	Capacity-Major	Carryover from 2016 TNR	NE Union Hill Rd: From 196th Ave NE to 208th Ave NE	Construct congestion relief measures	\$ 12,800,000		Bear Creek/Sammamish
OP-RD-5	Capacity-Major	Carryover from 2016 TNR	NE Union Hill Rd: From 208th Ave NE to 238th Ave NE	Construct congestion relief measures	\$ 19,300,000		Bear Creek/Sammamish
DR-20-30	Drainage	New for 2020 TNR	208 AVE NE at NE 89 St	Replace/construct drainage infrastructure	\$ 600,000		Bear Creek/Sammamish
DR-20-4	Drainage	New for 2020 TNR	238 AVE NE at NE 70 St	Replace/construct drainage infrastructure	\$ 1,155,000		Bear Creek/Sammamish
DR-20-40	Drainage	New for 2020 TNR	NE Union Hill Rd & 247 Av Ne	Replace/construct drainage infrastructure	\$ 600,000		Bear Creek/Sammamish
DR-20-9	Drainage	New for 2020 TNR	NE 80 St at 240 PL NE	Replace/construct drainage infrastructure	\$ 648,000		Bear Creek/Sammamish
DR-7	Drainage	Carryover from 2016 TNR	NE 40th St & 264th Ave NE (Dry Creek)	Replace/construct drainage infrastructure	\$ 634,000		Bear Creek/Sammamish
DR-15-2	Drainage	Completed	NE Union Hill Rd & 225th Ave NE	Replace/construct drainage infrastructure	\$ -		Bear Creek/Sammamish
GR-15-27	Guardrail	Carryover from 2016 TNR	NE 50th St: From 196th Ave NE to Sahalee Way NE	Construct guardrail	\$ 200,000		Bear Creek/Sammamish
OP-INT-113	Intersection and Traffic Safety Operations	Carryover from 2016 TNR	208th Ave NE & NE Union Hill Rd	Construct turn lanes	\$ 1,900,000		Bear Creek/Sammamish
SW-51	Intersection and Traffic Safety Operations	Carryover from 2016 TNR	238th Ave NE & NE 63rd PL	Intersection Improvement	\$ 2,900,000		Bear Creek/Sammamish
ITS-11	ITS	Carryover from 2016 TNR	NE Union Hill Rd: From 238th Ave NE to NE Ames Lake Rd	Cameras, speed warning system, vehicle detection	\$ 225,000		Bear Creek/Sammamish

Appendix A

Map Number 7: Redmond/Sammamish

TNR Project Number	TNR Category	Project Status*	Location	Scope	Estimated Cost	Notes	Community Service Area
ITS-20	ITS	Carryover from 2016 TNR	NE Union Hill Rd: From 196th Ave NE to 238rd Ave NE	Utilize fiber between 196th and 208th Ave NE, curve warning system, weather station, and travel time equipment	\$ 340,000		Bear Creek/Sammamish
NM-20-24	Non-Motorized	New for 2020 TNR	208th Ave NE: NE Union Hill Road to 204th PI NE	Provide non-motorized facility	\$ 4,070,000		Bear Creek/Sammamish
RC-116	Reconstruction	Carryover from 2016 TNR	NE Union Hill Rd: From 238th Ave NE to 258th Ave NE	Reconstruct roadway	\$ 6,537,000		Bear Creek/Sammamish
VRS-20-10	Vulnerable Road Segments	New for 2020 TNR	NE 8th St at Lake Allen Outlet	Study culvert replacement and road-raising options to reduce flooding.	\$ 2,800,000		Bear Creek/Sammamish
VRS-20-18	Vulnerable Road Segments	New for 2020 TNR	NE Ames Lake Road	Construct retaining wall and/or flatten slope	\$ 500,000		Bear Creek/Sammamish
RC-35	Vulnerable Road Segments	Carryover from 2016 TNR	NE 50th St: From 214th Ave NE to State Route 202	Armor shoulders to reduce road washouts	\$ 94,000		Bear Creek/Sammamish
RC-44	Vulnerable Road Segments	Carryover from 2016 TNR	NE Union Hill Rd: From 196th Ave NE to 206th PI NE	Construct retaining wall	\$ 210,000		Bear Creek/Sammamish
RC-51	Vulnerable Road Segments	Carryover from 2016 TNR	NE Union Hill Rd: From 229th PI NE to 238th Ave NE	Construct retaining wall	\$ 2,869,000		Bear Creek/Sammamish
GR-15-34	Guardrail	Carryover from 2016 TNR	169th Ave SE/SE Licorice Way: From SE 112th St to end of road (173rd Ave SE)	Construct guardrail	\$ 65,000		Four Creeks/Tiger Mountain

Appendix A

Map Number 8: Newcastle/Issaquah

TNR Project Number	TNR Category	Project Status*	Location	Scope	Estimated Cost	Notes	Community Service Area
OP-RD-24	Intersection and Traffic Safety Operations	Carryover from 2016 TNR	SE May Valley Rd: From Renton city limits (148th Ave SE) to State Route 900	Widen travel lanes	\$ 14,300,000		Four Creeks/ Tiger Mountain, West King County Areas

Appendix A

Map Number 9: East Renton/ Lake Youngs

TNR Project Number	TNR Category	Project Status*	Location	Scope	Estimated Cost	Notes	Community Service Area
BR-1384A	Bridge	Carryover from 2016 TNR	Fifteen Mile Creek Bridge: Issaquah Hobart Rd SE at Fifteenmile Creek, south of SE May Valley Rd	Replace bridge	\$ 8,291,000		Four Creeks/ Tiger Mountain
BR-1741A	Bridge	Carryover from 2016 TNR	Issaquah Creek Bridge: 252nd Ave SE at Issaquah Creek, south of Issaquah Hobart Rd SE	Replace bridge	\$ 7,943,000		Four Creeks/ Tiger Mountain
BR-3202	Bridge	Carryover from 2016 TNR	Maxwell Road Bridge: 225th Ave SE/Maxwell Rd SE cattle crossing	Replace bridge	\$ 1,505,000		Greater Maple Valley/ Cedar River
BR-493C	Bridge	Carryover from 2016 TNR	Fifteen Mile Creek Bridge: SE May Valley Rd at Fifteenmile Creek, west of Issaquah Hobart Rd SE	Replace bridge	\$ 5,321,000		Four Creeks/ Tiger Mountain
BR-83B	Bridge	Deleted	Issaquah Creek Bridge: SE 156th St at Issaquah Creek, east of Cedar Grove Rd SE	Replace bridge	\$ -	Project determined to be outside of TNR planning horizon.	Four Creeks/ Tiger Mountain
BR-83D	Bridge	Deleted	Issaquah Creek Bridge: Cedar Grove Rd SE at Issaquah Creek, about 0.5 mile north of SE 156th	Replace bridge	\$ -	Project determined to be outside of TNR planning horizon.	Four Creeks/ Tiger Mountain
CP-15	Capacity-Major	Carryover from 2016 TNR	140th Ave SE & SE Petrovitsky Rd	Construct congestion relief measures	\$ 12,700,000		West King County Areas
CP-15-2	Capacity-Major	Carryover from 2016 TNR	Issaquah Hobart Rd SE: From Issaquah city limits to Cedar Grove Rd SE	Construct congestion relief measures	\$ 38,700,000		Four Creeks/ Tiger Mountain
CP-15-4	Capacity-Major	Carryover from 2016 TNR	SE Petrovitsky Rd: From 151st Ave SE to SE 184th St	Construct congestion relief measures	\$ 16,900,000		West King County Areas
OP-RD-25	Capacity-Major	Carryover from 2016 TNR	154 PL SE / SE 142 PL: From SE Jones Rd to 156th Ave SE (Renton city limits)	Construct congestion relief measures	\$ 7,100,000		West King County Areas
DR-20-1	Drainage	New for 2020 TNR	13515 208 AVE SE	Replace/construct drainage infrastructure	\$ 1,275,000		Four Creeks/ Tiger Mountain
DR-20-16	Drainage	New for 2020 TNR	SE Fairwood Blvd at 151 AVE SE	Replace/construct drainage infrastructure	\$ 4,320,000		West King County Areas
DR-20-17	Drainage	New for 2020 TNR	SE Petrovitsky RD at 134 AVE SE	Replace/construct drainage infrastructure	\$ 4,080,000		West King County Areas
DR-20-24	Drainage	New for 2020 TNR	134 AVE SE at SE 187 PL	Replace/construct drainage infrastructure	\$ 2,700,000		West King County Areas

Appendix A

Map Number 9: East Renton/ Lake Youngs

TNR Project Number	TNR Category	Project Status*	Location	Scope	Estimated Cost	Notes	Community Service Area
DR-20-28	Drainage	New for 2020 TNR	SE 143 St at 177 AVE SE	Replace/construct drainage infrastructure	\$ 735,000		West King County Areas
DR-20-68	Drainage	New for 2020 TNR	26803 SE 200 St	Replace/construct drainage infrastructure	\$ 450,000		Greater Maple Valley/ Cedar River
DR-15-3	Drainage	Completed	229th Dr SE & McDonald Creek, north of SE 139th Ct	Construct scour mitigation measures	\$ -		Four Creeks/ Tiger Mountain
GR-15-19	Guardrail	Carryover from 2016 TNR	236th Ave SE / 235th Ave SE: From SE 196th St to SE Norvydan Rd	Construct guardrail	\$ 310,000		Greater Maple Valley/ Cedar River
GR-15-35	Guardrail	Carryover from 2016 TNR	SE 156th St: From SE Cedar Grove Rd to Issaquah Hobart Rd SE	Construct guardrail	\$ 40,000		Four Creeks/ Tiger Mountain
GR-15-36	Guardrail	Carryover from 2016 TNR	SE Mirrormont Dr: From Issaquah Hobart Rd SE to Tiger Mountain Rd SE	Replace jersey barrier with guardrail	\$ 80,000		Four Creeks/ Tiger Mountain
GR-15-38	Guardrail	Carryover from 2016 TNR	184th Ave SE / Peter Grubb Rd: From SE Lake Youngs Rd to SE 224th St	Construct guardrail	\$ 30,000		Greater Maple Valley/ Cedar River
GR-15-14	Guardrail	Completed	SE 208th St: From 244th Ave SE to 276th Ave SE	Construct guardrail	\$ -		Greater Maple Valley/ Cedar River
GR-15-5	Guardrail	Completed	SE 128th St: From Renton city limits (158th Ave SE) to 175th Ave SE	Construct guardrail	\$ -		West King County Areas, Four Creeks/Tiger Mountain
GR-15-8	Guardrail	Completed	SE 127th St: From SE May Valley Rd to 206th Pl SE	Construct guardrail	\$ -		Four Creeks/ Tiger Mountain
INT-TSO-20-5	Intersection and Traffic Safety Operations	New for 2020 TNR	SE Petrovitsky Rd & 162nd Pl SE	Intersection Improvement	\$ 2,800,000		West King County Areas

Appendix A

Map Number 9: East Renton/ Lake Youngs

TNR Project Number	TNR Category	Project Status*	Location	Scope	Estimated Cost	Notes	Community Service Area
INT-TSO-20-6	Intersection and Traffic Safety Operations	New for 2020 TNR	Issaquah-Hobart Rd SE & SE Cedar Grove Rd	Intersection Improvement	\$ 5,900,000		Four Creeks/ Tiger Mountain
INT-TSO-20-8	Intersection and Traffic Safety Operations	New for 2020 TNR	SE Petrovitsky & 140th Ave SE	Replace and upgrade signal equipment and detection	\$ 930,000		West King County Areas
IPA-1	Intersection and Traffic Safety Operations	Carryover from 2016 TNR	SE Petrovitsky Rd: From 140th Ave SE to 143rd Ave SE	Street lighting for existing turn lanes and tapers	\$ 430,000		West King County Areas
OP-INT-124	Intersection and Traffic Safety Operations	Carryover from 2016 TNR	Issaquah-Hobart Rd SE & SE May Valley Rd	Intersection Improvement	\$ 5,100,000		Four Creeks/ Tiger Mountain
OP-RD-22	Intersection and Traffic Safety Operations	Carryover from 2016 TNR	SE May Valley Rd: From SE 128th Way to Issaquah Hobart Rd SE	Widen travel lanes	\$ 18,600,000		Four Creeks/ Tiger Mountain
OP-RD-26	Intersection and Traffic Safety Operations	Carryover from 2016 TNR	SE May Valley RD: From State Route 900 to SE 128th Way	Improve sight distance	\$ 11,200,000		Four Creeks/ Tiger Mountain
SW-81	Intersection and Traffic Safety Operations	Carryover from 2016 TNR	SE 140th Ave SE & SE 200th St	Construct turn lanes	\$ 1,800,000		West King County Areas
OP-INT-106	Intersection and Traffic Safety Operations	Completed	SE Petrovitsky Rd & SE 192nd St	Construct turn lanes	\$ -		Greater Maple Valley/ Cedar River
OP-RD-21	Intersection and Traffic Safety Operations	Completed	SE 128th St: From Patriot Way SE to 168th Ave SE	Improve sight distance and construct turn lanes	\$ -		West King County Areas

Appendix A

Map Number 9: East Renton/ Lake Youngs

TNR Project Number	TNR Category	Project Status*	Location	Scope	Estimated Cost	Notes	Community Service Area
ITS-19	ITS	Carryover from 2016 TNR	154th Pl SE / SE 142nd Pl: From State Route 169 to 156th Ave SE	Cameras, pavement sensors, speed warning system	\$ 267,000		West King County Areas
ITS-24	ITS	Carryover from 2016 TNR	SE Petrovitsky Rd: From 151st Ave SE to Highway 18	Cameras, vehicle detection, data collection station, weather station, DMS, Travel time (to 134th)	\$ 740,000		Greater Maple Valley/ Cedar River, West King County Areas
ITS-29	ITS	Carryover from 2016 TNR	SE May Valley Rd: From State Route 900 to Issaquah Hobart Rd SE	Cameras, vehicle detection, road weather sensors, travel time equipment	\$ 366,000		Four Creeks/ Tiger Mountain
ITS-34	ITS	Carryover from 2016 TNR	164th Ave SE: From SE 128th St to SE May Valley Rd	Cameras, data collection station, weather station	\$ 110,000		Four Creeks/ Tiger Mountain
ITS-23	ITS	Completed	SE 204th Way / 140th Ave SE: From 137th Ave SE to SE 192nd St	Cameras, vehicle detection, synchronize signals	\$ -		West King County Areas
ITS-15	ITS	Carryover from 2016 TNR - scope change	Issaquah City Limits to SR 18	Cameras, message signs, weather stations, and travel time equipment	\$ 957,000	Project area extended to city limits	Four Creeks/ Tiger Mountain
ITS-28	ITS	Carryover from 2016 TNR - scope change	SE 128th St: From 158th Ave SE to SE May Valley Road	Cameras, data collection station, weather station, curve warning system	\$ 390,000	Signal synchronization completed and removed from scope	Four Creeks/ Tiger Mountain, West King County Areas
NM-20-4	Non-Motorized	New for 2020 TNR	169th Ave SE: SE 136th St to SE 144th St	Provide non-motorized facility	\$ 4,580,000		West King County Areas
RC-118	Reconstruction	Carryover from 2016 TNR	Issaquah Hobart Rd SE: From S Issaquah city limits to SE May Valley Rd	Reconstruct roadway	\$ 8,284,000		Four Creeks/ Tiger Mountain
RC-119	Reconstruction	Carryover from 2016 TNR	Issaquah Hobart Rd SE: From SE May Valley Rd to Cedar Grove Rd SE	Reconstruct roadway	\$ 10,867,000		Four Creeks/ Tiger Mountain
RC-120	Reconstruction	Carryover from 2016 TNR	Issaquah Hobart Rd SE: From SE 156th St to Cedar Grove Rd SE	Reconstruct roadway	\$ 9,477,000		Four Creeks/ Tiger Mountain
RC-121	Reconstruction	Carryover from 2016 TNR	Issaquah Hobart Rd SE: From SE 156th St to Highway 18	Reconstruct roadway	\$ 14,742,000		Four Creeks/ Tiger Mountain
RC-129	Reconstruction	Carryover from 2016 TNR	SE 216th Way: From State Route 169 to 244th Ave SE	Reconstruct roadway	\$ 7,064,000		Greater Maple Valley/ Cedar River

Appendix A

Map Number 9: East Renton/Lake Youngs, Covington/Black Diamond

TNR Project Number	TNR Category	Project Status*	Location	Scope	Estimated Cost	Notes	Community Service Area
RC-3	Reconstruction	Carryover from 2016 TNR	SE Petrovitsky Rd: From 134th Ave SE to 143rd Ave SE	Reconstruct roadway	\$ 9,038,000		West King County Areas
VRS-20-4	Vulnerable Road Segments	New for 2020 TNR	Cedar Grove Road	Elevate roadway	\$ 100,000		Greater Maple Valley/ Cedar River
VRS-20-9	Vulnerable Road Segments	New for 2020 TNR	SE 162nd Avenue at SE 166th Court	Study culvert replacement and road-raising options to reduce flooding.	\$ 2,530,000		West King County Areas
RC-50	Vulnerable Road Segments	Carryover from 2016 TNR	196th Ave SE: From SE 162nd St to SE 170th St	Construct retaining wall	\$ 1,260,000		Greater Maple Valley/ Cedar River

Appendix A

Map Number 10: Covington/Black Diamond

TNR Project Number	TNR Category	Project Status*	Location	Scope	Estimated Cost	Notes	Community Service Area
BR-3085	Bridge	New for 2020 TNR	Covington	Replace bridge	\$ 2,946,000		SE King County
BR-3087	Bridge	New for 2020 TNR	Big Soos Creek	Replace bridge	\$ 2,634,000		SE King County
BR-30860X	Bridge	Carryover from 2016 TNR	Berrydale OX Bridge: Kent Black Diamond Rd SE over the railroad, at SE 292nd St (Jenkins Creek)	Replace bridge	\$ 9,774,000		SE King County
DR-20-14	Drainage	New for 2020 TNR	SE 317 PL and Thomas Rd SE	Replace/construct drainage infrastructure	\$ 1,050,000		SE King County
DR-20-22	Drainage	New for 2020 TNR	Landsberg RD SE at SE Summit Landsberg Rd	Replace/construct drainage infrastructure	\$ 150,000		Greater Maple Valley/ Cedar River
DR-20-43	Drainage	New for 2020 TNR	156 Av SE And SE 240 St	Replace/construct drainage infrastructure	\$ 600,000		Greater Maple Valley/ Cedar River
DR-10	Drainage	Carryover from 2016 TNR	North Fork Rd SE & N Fork Snoqualmie River	Replace undersized culvert with a bridge structure	\$ 1,936,000		Greater Maple Valley/ Cedar River
DR-15-17	Drainage	Carryover from 2016 TNR	Kent Black Diamond Rd SE & SE 292nd St at Jenkins Creek	Replace/construct drainage infrastructure	\$ 1,306,000		SE King County
DR-9	Drainage	Carryover from 2016 TNR	164th Ave SE & SE 225th St	Replace/construct drainage infrastructure	\$ 1,249,000		Greater Maple Valley/ Cedar River
GR-15-25	Guardrail	Carryover from 2016 TNR	SE 224th St: From 244th Ave SE to 276th Ave SE	Construct guardrail	\$ 95,000		Greater Maple Valley/ Cedar River
GR-88	Guardrail	Carryover from 2016 TNR	156th Ave SE: From SE 240th St to SE 251st St/Covington city limits	Construct guardrail	\$ 20,000		Greater Maple Valley/ Cedar River
IPA-22	Intersection and Traffic Safety Operations	Carryover from 2016 TNR	SE Kent-Kangley Rd & Landsburg Rd SE	Intersection Improvement	\$ 3,500,000		Greater Maple Valley/ Cedar River
IPA-33	Intersection and Traffic Safety Operations	Carryover from 2016 TNR	164th Pl SE & SE Covington-Sawyer Rd	Intersection Improvement	\$ 3,700,000		SE King County

Appendix A

Map Number 10: Covington/Black Diamond

TNR Project Number	TNR Category	Project Status*	Location	Scope	Estimated Cost	Notes	Community Service Area
OP-INT-92	Intersection and Traffic Safety Operations	Carryover from 2016 TNR	SE Kent-Kangley Rd & Retreat Kanaskat Rd	Realign Intersection and install turn lanes	\$ 1,700,000		Greater Maple Valley/ Cedar River
OP-RD-41	Intersection and Traffic Safety Operations	Carryover from 2016 TNR	SE Covington-Sawyer Rd: From Thomas Rd to 216th Ave SE	Realign roadway	\$ 18,700,000		SE King County, West King County Areas
SW-13	Intersection and Traffic Safety Operations	Carryover from 2016 TNR	SE Petrovitsky Rd & Sweeney Rd SE	Intersection Improvement	\$ 3,600,000		West King County Areas
SW-56	Intersection and Traffic Safety Operations	Carryover from 2016 TNR	164th Ave SE & SE 240th St	Intersection Improvement	\$ 2,900,000		Greater Maple Valley/ Cedar River
IPA-26	Intersection and Traffic Safety Operations	Deleted	SE Petrovitsky Rd & Sweeney Rd SE	Construct traffic signal with turn lanes	\$ -	Combined with SW-13	West King County Areas
OP-INT-95	Intersection and Traffic Safety Operations	Deleted	SE 216th Way & Dorre Don Way	Construct turn lanes	\$ -	No longer on traffic safety priority array	Greater Maple Valley/ Cedar River
NM-20-5	Non-Motorized	New for 2020 TNR	SE Covington Sawyer Way: 164th Pl SE to 216th Ave SE	Provide non-motorized facility	\$ 7,590,000		SE King County, West King County Areas
NM-0202	Non-Motorized	Carryover from 2016 TNR	195th Ave SE: From E Lake Morton Dr SE to SE 320th St	Provide non-motorized facility	\$ 250,000		SE King County
NM-4033	Non-Motorized	Carryover from 2016 TNR	164th Ave SE: From SE 224th St to SE 240th St	Provide non-motorized facility	\$ 2,040,000		Greater Maple Valley/ Cedar River
NM-4041	Non-Motorized	Carryover from 2016 TNR	SE 240th St: From 156th Ave SE to 172nd Ave SE	Provide non-motorized facility	\$ 3,500,000		Greater Maple Valley/ Cedar River

Appendix A

Map Number 10: Covington/Black Diamond

TNR Project Number	TNR Category	Project Status*	Location	Scope	Estimated Cost	Notes	Community Service Area
NM-5034	Non-Motorized	Carryover from 2016 TNR	168th Ave SE: From Kent-Black Diamond Rd SE to SE Auburn Black Diamond Rd	Provide non-motorized facility	\$ 3,700,000		SE King County
NM-5049	Non-Motorized	Carryover from 2016 TNR	SE 216th St: From 276th Ave SE to Maxwell Rd SE	Provide non-motorized facility	\$ 9,700,000		Greater Maple Valley/ Cedar River
NM-5050	Non-Motorized	Carryover from 2016 TNR	Sweeney Rd SE/SE Petrovitsky: From 196th Ave SE to SE 232nd St	Provide non-motorized facility	\$ 7,520,000		Greater Maple Valley/ Cedar River, West King County Areas
NM-5051	Non-Motorized	Carryover from 2016 TNR	Black Diamond-Ravensdale Rd SE: From State Route 169 to SE Kent-Kangley Rd	Provide non-motorized facility	\$ 14,480,000		Greater Maple Valley/ Cedar River
NM-5068	Non-Motorized	Carryover from 2016 TNR	SE 240th St: From 148th Ave SE to 164th Ave SE	Provide non-motorized facility	\$ 4,510,000		Greater Maple Valley/ Cedar River, West King County Areas
NM-5069	Non-Motorized	Carryover from 2016 TNR	SE 240th St: From 164th Ave SE to 180th Ave SE	Provide non-motorized facility	\$ 4,490,000		Greater Maple Valley/ Cedar River
NM-9980	Non-Motorized	Carryover from 2016 TNR - scope change	168th Way SE & Covington Creek	Construct pedestrian bridge	\$ 2,110,000	Construction of pedestrian bridge added to scope	SE King County
RC-127	Reconstruction	Carryover from 2016 TNR	276th Ave SE: From SE 216th St to SE Summit Landsburg Rd	Reconstruct roadway	\$ 12,241,000		Greater Maple Valley/ Cedar River
RC-128	Reconstruction	Carryover from 2016 TNR	Landsburg Rd SE: From SE Summit Landsburg Rd to SE Kent Kangley Rd	Reconstruct roadway	\$ 5,835,000		Greater Maple Valley/ Cedar River
RC-130	Reconstruction	Carryover from 2016 TNR	SE 216th St: From 244th Ave SE to 276th Ave SE	Reconstruct roadway	\$ 9,521,000		Greater Maple Valley/ Cedar River
RC-132	Reconstruction	Carryover from 2016 TNR	SE Kent-Kangley Rd: From Kent city limits to Landsburg Rd SE	Reconstruct roadway	\$ 6,757,000		Greater Maple Valley/ Cedar River

Appendix A

Map Number 10: Covington/Black Diamond

TNR Project Number	TNR Category	Project Status*	Location	Scope	Estimated Cost	Notes	Community Service Area
RC-133	Reconstruction	Carryover from 2016 TNR	SE Kent Kangley Rd: From Landsburg Rd SE to Retreat Kanaskat Rd	Reconstruct roadway	\$ 4,870,000		Greater Maple Valley/ Cedar River
RC-135	Reconstruction	Carryover from 2016 TNR	SE Ravensdale Way: From SE Kent-Kangley Rd to 268th Ave SE	Reconstruct roadway	\$ 2,589,000		Greater Maple Valley/ Cedar River
RC-15-3	Reconstruction	Carryover from 2016 TNR	SE Summit Landsburg Rd: From Kent city limits (244th Ave SE) to Landsburg Rd SE	Reconstruct roadway	\$ 10,004,000		Greater Maple Valley/ Cedar River
RC-6	Reconstruction	Carryover from 2016 TNR	SE Covington-Sawyer Rd: From Covington city limits to 216th Ave SE	Road rehabilitation (pavement treatment)	\$ 23,912,000		SE King County, West King County Areas
VRS-20-19	Vulnerable Road Segments	New for 2020 TNR	SE Auburn Black Diamond	Relocate road	\$ 20,000,000		SE King County

Appendix A

Map Number 11: North Enumclaw

TNR Project Number	TNR Category	Project Status*	Location	Scope	Estimated Cost	Notes	Community Service Area
BR-3020	Bridge	Carryover from 2016 TNR	Green Valley Rd Bridge: SE Green Valley Rd, about 5.5 miles east of Highway 18	Replace bridge	\$ 1,613,000		SE King County
BR-3030	Bridge	Carryover from 2016 TNR	SE 380th St Bridge: SE 380th St & SE 383rd Way, about 1 mile west of State Route 169	Replace bridge	\$ 2,043,000		SE King County
BR-3022	Bridge	Deleted	Green Valley Rd Bridge: SE Green Valley Rd, about 6.7 miles east of Highway 18	Replace bridge	\$ -	Project determined to be outside of TNR planning horizon.	SE King County
OP-RD-44	Capacity-Major	Deleted	SE Lake Holm Rd: From East Lake Holm Dr SE to 170th Pl SE	Construct congestion relief measures	\$ -	Project determined to be outside of TNR planning horizon.	SE King County
DR-20-2	Drainage	New for 2020 TNR	180 AVE SE at SE 408 St	Replace/construct drainage infrastructure	\$ 1,050,000		SE King County
DR-20-6	Drainage	New for 2020 TNR	36500 200 AVE SE	Replace/construct drainage infrastructure	\$ 1,035,000		SE King County
DR-20-76	Drainage	New for 2020 TNR	292 Av SE, 1070 Feet South Of SE 392 St	Replace/construct drainage infrastructure	\$ 900,000		SE King County
DR-15-16	Drainage	Carryover from 2016 TNR	SE Auburn Black Diamond Rd at Krisp Creek	Replace/construct drainage infrastructure	\$ 1,272,000		SE King County
DR-15-11	Drainage	Completed	284th Ave SE/Veazie-Cumberland Rd SE & North Fork Newaukum Creek	Replace/construct drainage infrastructure	\$ -		SE King County
GR-15-28	Guardrail	Carryover from 2016 TNR	SE 384th St/ SE 383rd St/ SE 380th St: From 244th Ave SE to State Route 169	Construct guardrail	\$ 150,000		SE King County
GR-15-32	Guardrail	Carryover from 2016 TNR	292nd Ave SE/SE 416th St: From SE 392nd St to 284th Ave SE	Construct guardrail	\$ 130,000		SE King County
GR-15-33	Guardrail	Carryover from 2016 TNR	278th Way SE: From SE 392nd St to SE 416th St	Construct guardrail	\$ 260,000		SE King County
INT-TSO-20-10	Intersection and Traffic Safety Operations	New for 2020 TNR	Kent Black Diamond Rd & SE Auburn Black Diamond Rd	Intersection Improvement	\$ 12,100,000		SE King County
IPA-12	Intersection and Traffic Safety Operations	Carryover from 2016 TNR	SE Auburn Black Diamond Rd & 190th Ave SE	Realign intersection	\$ 1,300,000		SE King County

Appendix A

Map Number 11: North Enumclaw

TNR Project Number	TNR Category	Project Status*	Location	Scope	Estimated Cost	Notes	Community Service Area
OP-INT-97	Intersection and Traffic Safety Operations	Deleted	Thomas Rd SE & Kent Black Diamond Rd SE	Realign intersection	\$ -	No longer on traffic safety priority array	SE King County
ITS-27	ITS	Carryover from 2016 TNR	SE Auburn Black Diamond Rd: From Kent Black Diamond Rd SE to SE Lake Holm Rd	Vehicle detection/flasher system, slide detection	\$ 196,000		SE King County
NM-20-15	Non-Motorized	New for 2020 TNR	212th Ave SE: SE 409th St to SE 416th St	Provide non-motorized facility	\$ 760,000		SE King County
NM-5007	Non-Motorized	Carryover from 2016 TNR	Veazie-Cumberland Rd SE: From SE 384th St to SE 416th St	Provide non-motorized facility	\$ 9,590,000		SE King County
NM-5012	Non-Motorized	Carryover from 2016 TNR	244th Ave SE: From Enumclaw city limits (SE 436th) to SE 400th St	Provide non-motorized facility	\$ 7,850,000		SE King County
NM-5010	Reconstruction	Carryover from 2016 TNR	SE 400th Way: From SE 400th St to SE 392nd St	Reconstruct roadway	\$ 2,896,000		SE King County
RC-142	Reconstruction	Carryover from 2016 TNR	SE Green Valley Rd: From 243rd Ave SE to State Route 169	Reconstruct roadway	\$ 10,135,000		SE King County
VRS-20-6	Vulnerable Road Segments	New for 2020 TNR	SE 384 St @ 176 Ave SE	Study culvert replacement and road-raising options to reduce flooding.	\$ 1,650,000		SE King County
VRS-20-7	Vulnerable Road Segments	New for 2020 TNR	SE 380 Pl at SR 164	Study culvert replacement and road-raising options to reduce flooding.	\$ 690,000		SE King County

Appendix A

Map Number 12: South Enumclaw

TNR Project Number	TNR Category	Project Status*	Location	Scope	Estimated Cost	Notes	Community Service Area
BR-3049	Bridge	New for 2020 TNR	284th Ave SE Bridge	Replace bridge	\$ 1,843,000		SE King County
BR-3051	Bridge	New for 2020 TNR	Boise Creek	Replace bridge	\$ 1,505,000		SE King County
BR-3060	Bridge	New for 2020 TNR	208th Ave SE	Replace bridge	\$ 2,043,000		SE King County
BR-3055A	Bridge	Carryover from 2016 TNR	Boise X Connection Bridge: SE Mud Mountain Dam Rd at Boise Creek, south east of State Route 410	Replace bridge	\$ 2,070,000		SE King County
BR-3068	Bridge	Deleted	Newaukum Creek Bridge: 244th Ave SE at Newaukum Creek, 0.2 mile north of SE 436th St	Replace bridge	\$ -	Project determined to be outside of TNR planning horizon.	SE King County
DR-20-32	Drainage	New for 2020 TNR	27609 SE 432 St	Replace/construct drainage infrastructure	\$ 1,350,000		SE King County
DR-20-44	Drainage	New for 2020 TNR	47322 284 Av SE	Replace/construct drainage infrastructure	\$ 750,000		SE King County
DR-20-55	Drainage	New for 2020 TNR	46913 284 Av SE	Replace/construct drainage infrastructure	\$ 750,000		SE King County
DR-3	Drainage	Carryover from 2016 TNR	SE 440th St at the 27000 block	Replace/construct drainage infrastructure	\$ 634,000		SE King County
GR-20-2	Guardrail	New for 2020 TNR	SE 472nd St: From 288th Ave SE to 303rd Ave SE	Construct guardrail	\$ 100,000		SE King County
GR-103	Guardrail	Carryover from 2016 TNR	SE 432nd St: From Enumclaw city limits to 284th Ave SE	Construct guardrail	\$ 30,000		SE King County
GR-104	Guardrail	Carryover from 2016 TNR	196th Ave SE: From SE 400th St to SE 456th St	Construct guardrail	\$ 100,000		SE King County
GR-15-31	Guardrail	Carryover from 2016 TNR	SE 424th St: From 196th Ave SE to State Route 169	Construct guardrail	\$ 475,000		SE King County
GR-86	Guardrail	Carryover from 2016 TNR	284th Ave SE: From SE Mud Mountain Rd to SE 451st St	Construct guardrail	\$ 70,000		SE King County
GR-92	Guardrail	Carryover from 2016 TNR	228th Ave SE: From SE 400th St to SE 452nd St	Construct guardrail	\$ 100,000		SE King County
GR-96	Guardrail	Carryover from 2016 TNR	SE 456th Way: From 196th Ave SE to 228th Ave SE	Construct guardrail	\$ 30,000		SE King County
GR-15-15	Guardrail	Completed	286th Ave SE/288th Ave SE: From SE 464th St to SE 480th St	Construct guardrail	\$ -		SE King County
NM-5008	Non-Motorized	Carryover from 2016 TNR	SE 432nd St: From 284th Ave SE to Enumclaw city limits	Provide non-motorized facility	\$ 2,310,000		SE King County

Appendix A

Map Number 12: South Enumclaw

TNR Project Number	TNR Category	Project Status*	Location	Scope	Estimated Cost	Notes	Community Service Area
VRS-20-12	Vulnerable Road Segments	New for 2020 TNR	212 AVE SE at 43200 Block	Study to reduce flooding and improve flow capacity.	\$ 200,000		SE King County

Appendix A

Map Number 13: Duvall

TNR Project Number	TNR Category	Project Status*	Location	Scope	Estimated Cost	Notes	Community Service Area
BR-267X	Bridge	New for 2020 TNR	Cherry Valley Trestle	Replace bridge	\$ 5,240,000		Snoqualmie Valley NE King County
BR-5032	Bridge	Deleted	Stossel Creek Bridge: Stossel Creek Rd NE at Stossel Creek, about 6.2 miles northeast of Kelly Rd NE	Replace bridge	\$ -	Project determined to be outside of TNR planning horizon.	Snoqualmie Valley NE King County
BR-5034A	Bridge	Deleted	Lake Joy Bridge: NE Lake Joy Dr & 346th PI NE	Replace bridge	\$ -	Project determined to be outside of TNR planning horizon.	Snoqualmie Valley NE King County
DR-20-11	Drainage	New for 2020 TNR	NE Lake Joy Rd at NE 118 PL	Replace/construct drainage infrastructure	\$ 1,728,000		Snoqualmie Valley NE King County
DR-20-39	Drainage	New for 2020 TNR	NE Stossel Crk Wy @ 4.5 Mi Mark Off Paved Rd	Replace/construct drainage infrastructure	\$ 450,000		Snoqualmie Valley NE King County
DR-20-46	Drainage	New for 2020 TNR	27033 NE Cherry Valley Rd	Replace/construct drainage infrastructure	\$ 900,000		Snoqualmie Valley NE King County
DR-20-62	Drainage	New for 2020 TNR	28810 NE Cherry Valley Rd	Replace/construct drainage infrastructure	\$ 900,000		Snoqualmie Valley NE King County
DR-20-66	Drainage	New for 2020 TNR	NE 124Th St And SR 203	Replace/construct drainage infrastructure	\$ 900,000		Snoqualmie Valley NE King County
DR-20-73	Drainage	New for 2020 TNR	29925 NE Big Rock Rd	Replace/construct drainage infrastructure	\$ 750,000		Snoqualmie Valley NE King County
DR-15-12	Drainage	Carryover from 2016 TNR	NE Lake Joy Rd & Cherry Creek. North of NE Moss Lake Rd	Replace/construct drainage infrastructure	\$ 1,902,000		Snoqualmie Valley NE King County
DR-4	Drainage	Carryover from 2016 TNR	NE 106th St & 314th Ave NE	Replace/construct drainage infrastructure	\$ 1,000,000		Snoqualmie Valley NE King County
DR-5	Drainage	Carryover from 2016 TNR	NE 195th St & Margaret Creek. West of 327th Ave NE	Replace/construct drainage infrastructure	\$ 1,000,000		Snoqualmie Valley NE King County

Appendix A

Map Number 13: Duvall

TNR Project Number	TNR Category	Project Status*	Location	Scope	Estimated Cost	Notes	Community Service Area
GR-20-4	Guardrail	New for 2020 TNR	NE Stossel Creek Way: From 348th Ave NE to 351st Ave NE	Construct guardrail	\$ 40,000		Snoqualmie Valley NE King County
GR-15-23	Guardrail	Carryover from 2016 TNR	NE Lake Joy Rd: From Kelly Rd NE to W Lake Joy Dr NE	Construct guardrail	\$ 280,000		Snoqualmie Valley NE King County
GR-15-24	Guardrail	Carryover from 2016 TNR	Mountain View Rd NE / 318th Ave NE: From NE Cherry Valley Rd to end of road	Construct guardrail	\$ 270,000		Snoqualmie Valley NE King County
GR-94	Guardrail	Carryover from 2016 TNR	NE 124th St: From State Route 203 to end of road (286th Ave NE)	Construct guardrail	\$ 120,000		Snoqualmie Valley NE King County

Appendix A

Map Number 14: Carnation

TNR Project Number	TNR Category	Project Status*	Location	Scope	Estimated Cost	Notes	Community Service Area
BR-1023A	Bridge	New for 2020 TNR	Stossel Bridge	Replace bridge	\$ 20,246,000		Snoqualmie Valley NE King County
BR-1320A	Bridge	New for 2020 TNR	Ames Lake Trestle	Replace bridge	\$ 7,551,000		Snoqualmie Valley NE King County
BR-2133A	Bridge	Carryover from 2016 TNR	Sikes Lake Trestle: 284th Ave NE at Sikes Lake, about 0.5 mile east of State Route 202	Replace bridge	\$ 13,954,000		Snoqualmie Valley NE King County
BR-257Z	Bridge	Carryover from 2016 TNR	Horseshoe Lake Creek Bridge: 310th Ave NE at Horseshoe Lake Creek	Replace bridge	\$ 2,209,000		Snoqualmie Valley NE King County
BR-916A	Bridge	Deleted	West Snoqualmie River Road Bridge: West Snoqualmie River Road over a slough to the Snoqualmie River	Replace bridge	\$ -	Project determined to be outside of TNR planning horizon.	Snoqualmie Valley NE King County
DR-20-10	Drainage	New for 2020 TNR	NE 80 St at West Snoqualmie Valley Rd NE	Replace/construct drainage infrastructure	\$ 1,260,000		Snoqualmie Valley NE King County
DR-20-26	Drainage	New for 2020 TNR	W Snoqualmie River Rd at NE Tolt Hill Rd	Replace/construct drainage infrastructure	\$ 150,000		Snoqualmie Valley NE King County
DR-20-5	Drainage	New for 2020 TNR	33609 NE 24 St	Replace/construct drainage infrastructure	\$ 1,050,000		Snoqualmie Valley NE King County
GR-115	Guardrail	Carryover from 2016 TNR	East Ames Lake Dr NE: From W Ames Lake Dr NE to W Ames Lake Dr NE	Construct guardrail	\$ 150,000		Bear Creek/ Sammamish
GR-15-18	Guardrail	Carryover from 2016 TNR	SE 24th St / Lake Langlois Rd: From State Route 203 to end of road	Construct guardrail	\$ 500,000		Snoqualmie Valley NE King County
GR-15-30	Guardrail	Carryover from 2016 TNR	310th Ave NE / NE 60th St: From NE Carnation Farm Rd to State Route 203	Construct guardrail	\$ 200,000		Snoqualmie Valley NE King County
GR-15-37	Guardrail	Carryover from 2016 TNR	NE 100th St: From W Snoqualmie Valley Rd NE to 284th Ave NE	Construct guardrail	\$ 100,000		Snoqualmie Valley NE King County

Appendix A

Map Number 14: Carnation

TNR Project Number	TNR Category	Project Status*	Location	Scope	Estimated Cost	Notes	Community Service Area
GR-80	Guardrail	Carryover from 2016 TNR	West Snoqualmie River Rd SE: From SE 24th St to NE Tolt Hill Rd	Construct guardrail	\$ 160,000		Snoqualmie Valley NE King County
GR-15-10	Guardrail	Completed	NE Tolt River Rd: From Carnation city limits to NE 80th St	Construct guardrail	\$ -		Snoqualmie Valley NE King County
OP-RD-4	Intersection and Traffic Safety Operations	Deleted	NE Ames Lake Rd: Union Hill Rd to State Route 202	Realign and widen lanes	\$ -	Project determined to be outside of TNR planning horizon.	Bear Creek/ Sammamish
ITS-25	ITS	Carryover from 2016 TNR	W Snoqualmie River Rd SE: From SE 24th St to NE Tolt Hill Rd and State Route 203	Cameras, vehicle detection, pavement sensors	\$ 586,000		Snoqualmie Valley NE King County
OP-RD-37	Reconstruction	Carryover from 2016 TNR	NE Tolt Hill Rd: From Tolt Hill Bridge to 500 feet west of State Route 203	Reconstruct roadway	\$ 1,887,000		Snoqualmie Valley NE King County
RC-15-1	Reconstruction	Completed	West Snoqualmie Valley Rd NE: From NE 80th St to Ames Lake Carnation Rd NE	Reconstruct roadway	\$ -		Snoqualmie Valley NE King County
VRS-20-1	Vulnerable Road Segments	New for 2020 TNR	NE 124th St, NE Woodinville Duvall Rd, NE Carnation Farm Rd, Tolt Hill Rd	Study major cross-Snoqualmie Valley roadways to determine cost effectiveness of flood-improvement.	\$ 500,000		Snoqualmie Valley NE King County
VRS-20-17	Vulnerable Road Segments	New for 2020 TNR	NE Tolt Hill Road Debris Slide	Construct retaining wall and/or flatten slope	\$ 500,000		Bear Creek/ Sammamish
RC-18	Vulnerable Road Segments	Carryover from 2016 TNR	West Snoqualmie River Rd NE: From NE Tolt Hill Rd to SE 24th St	Armor shoulders to reduce road washouts	\$ 433,000		Snoqualmie Valley NE King County
RC-32	Vulnerable Road Segments	Carryover from 2016 TNR	Tolt Hill Rd: From Tolt Hill Bridge to State Route 203	Armor shoulders to reduce road washouts	\$ 117,000		Snoqualmie Valley NE King County
RC-34	Vulnerable Road Segments	Carryover from 2016 TNR	284th Ave NE: From NE 100 St to NE Carnation Farm Rd	Armor shoulders to reduce road washouts	\$ 243,000		Snoqualmie Valley NE King County

Appendix A

Map Number 14: Carnation

TNR Project Number	TNR Category	Project Status*	Location	Scope	Estimated Cost	Notes	Community Service Area
RC-36	Vulnerable Road Segments	Carryover from 2016 TNR	NE 80th St: From West Snoqualmie Valley Rd NE to Ames Lake-Carnation Rd	Armor shoulders to reduce road washouts	\$ 1,778,000		Snoqualmie Valley NE King County
RC-38	Vulnerable Road Segments	Carryover from 2016 TNR	NE 100th St: From West Snoqualmie Valley Rd to 284th Ave NE	Armor shoulders to reduce road washouts	\$ 794,000		Snoqualmie Valley NE King County

Appendix A

Map Number 15: Snoqualmie

TNR Project Number	TNR Category	Project Status*	Location	Scope	Estimated Cost	Notes	Community Service Area
BR-1086A	Bridge	New for 2020 TNR	Kimball Creek Bridge: SE 80th St at Kimball Creek, 0.4 mile west of State Route 202	Replace bridge	\$ 2,422,000		Snoqualmie Valley NE King County
BR-271B	Bridge	New for 2020 TNR	Upper Tokul Creek	Replace bridge	\$ 4,356,000		Snoqualmie Valley NE King County
BR-1239A	Bridge	Carryover from 2016 TNR	Upper Preston Bridge: Upper Preston Rd SE at Echo Lake Creek, north of SE 110th St	Replace bridge	\$ 4,159,000		Snoqualmie Valley NE King County
BR-249B	Bridge	Carryover from 2016 TNR	C.W. Neal Road Bridge: Neal Rd SE, about 1.5 mile south of State Route 203	Replace bridge	\$ 1,505,000		Snoqualmie Valley NE King County
BR-1086B	Bridge	Deleted	Coal Creek Bridge: 378th Ave SE at Coal Creek	Replace bridge	\$ -	Project determined to be outside of TNR planning horizon.	Snoqualmie Valley NE King County
BR-249C	Bridge	Deleted	C.W. Neal Road Bridge: Neal Rd SE, about 0.3 mile south of State Route 203	Replace bridge	\$ -	Project determined to be outside of TNR planning horizon.	Snoqualmie Valley NE King County
BR-61B	Bridge	Deleted	Fish Hatcher Bridge: SE Fish Hatchery Rd, about 0.8 mile southwest of State Route 202	Replace bridge	\$ -	Project determined to be outside of TNR planning horizon.	Snoqualmie Valley NE King County
BR-99L	Bridge	Deleted	Kimball Creek Bridge: SE 76th St at Kimball Creek, 0.5 mile west of State Route 202	Replace bridge	\$ -	Project determined to be outside of TNR planning horizon.	Snoqualmie Valley NE King County
DR-20-15	Drainage	New for 2020 TNR	SE Duthie Hill Rd at 270 AVE SE	Replace/construct drainage infrastructure	\$ 1,470,000		Snoqualmie Valley NE King County
DR-20-35	Drainage	New for 2020 TNR	30829 SE 40 St	Replace/construct drainage infrastructure	\$ 900,000		Snoqualmie Valley NE King County
DR-20-38	Drainage	New for 2020 TNR	About 250' East Of 41502 SE Reinig Rd	Replace/construct drainage infrastructure	\$ 1,050,000		Snoqualmie Valley NE King County
DR-20-42	Drainage	New for 2020 TNR	5935 Preston/Fall City Rd SE	Replace/construct drainage infrastructure	\$ 900,000		Snoqualmie Valley NE King County

Appendix A

Map Number 15: Snoqualmie

TNR Project Number	TNR Category	Project Status*	Location	Scope	Estimated Cost	Notes	Community Service Area
DR-20-51	Drainage	New for 2020 TNR	35827 SE David Powell Rd	Replace/construct drainage infrastructure	\$ 600,000		Snoqualmie Valley NE King County
DR-20-52	Drainage	New for 2020 TNR	28405 SE High Point Way	Replace/construct drainage infrastructure	\$ 900,000		Snoqualmie Valley NE King County
DR-20-63	Drainage	New for 2020 TNR	8106 382 Av SE	Replace/construct drainage infrastructure	\$ 450,000		Snoqualmie Valley NE King County
DR-20-64	Drainage	New for 2020 TNR	8416 Preston/Fall City Rd SE	Replace/construct drainage infrastructure	\$ 1,200,000		Snoqualmie Valley NE King County
DR-20-71	Drainage	New for 2020 TNR	SE North Bend Way & Meadowbrook Way.	Replace/construct drainage infrastructure	\$ 1,350,000		Snoqualmie Valley NE King County
DR-20-72	Drainage	New for 2020 TNR	30211 SE 40 St	Replace/construct drainage infrastructure	\$ 900,000		Snoqualmie Valley NE King County
DR-20-75	Drainage	New for 2020 TNR	SE David Powell Rd & 347 Pl. S.E.	Replace/construct drainage infrastructure	\$ 450,000		Snoqualmie Valley NE King County
DR-20-77	Drainage	New for 2020 TNR	30415 SE 40 St	Replace/construct drainage infrastructure	\$ 600,000		Snoqualmie Valley NE King County
DR-20-78	Drainage	New for 2020 TNR	8528 378 Av SE	Replace/construct drainage infrastructure	\$ 450,000		Snoqualmie Valley NE King County
DR-15-14	Drainage	Carryover from 2016 TNR	Just east of Preston Fall City Rd SE on SE 47th St	Replace/construct drainage infrastructure	\$ 950,000		Snoqualmie Valley NE King County
DR-15-15	Drainage	Completed	SE 55th St & W Lake Alice Rd SE	Replace/construct drainage infrastructure	\$ -		Snoqualmie Valley NE King County
GR-20-3	Guardrail	New for 2020 TNR	Raging River Dike Rd (312th Way SE): From Upper Preston Rd SE to Under I-90 Overpass	Construct guardrail	\$ 80,000		Snoqualmie Valley NE King County

Appendix A

Map Number 15: Snoqualmie

TNR Project Number	TNR Category	Project Status*	Location	Scope	Estimated Cost	Notes	Community Service Area
GR-15-20	Guardrail	Carryover from 2016 TNR	356th Dr SE/ 364th Way SE: From State Route 203 to end of road (SE 27th St)	Construct guardrail	\$ 450,000		Snoqualmie Valley NE King County
GR-28	Guardrail	Carryover from 2016 TNR	SE David Powell Rd: From Preston-Fall City Rd SE to end of route	Construct guardrail	\$ 600,000		Snoqualmie Valley NE King County
GR-98	Guardrail	Carryover from 2016 TNR	Fish Hatchery Rd/ 372nd Ave SE: From State Route 202 to State Route 202	Construct guardrail	\$ 500,000		Snoqualmie Valley NE King County
GR-121	Guardrail	Completed	Upper Preston Rd SE: From 312th Ave SE to under I-90 overpass	Construct guardrail	\$ -		Snoqualmie Valley NE King County
GR-15-11	Guardrail	Completed	SE 48th St: From 317th Pl SE to 328th Ave SE	Construct guardrail	\$ -		Snoqualmie Valley NE King County
IPA-27	Intersection and Traffic Safety Operations	Carryover from 2016 TNR	SE 82nd St/ SE High Point Way & SE 82nd St	Intersection Improvement	\$ 3,600,000		Snoqualmie Valley NE King County
OP-INT-88	Intersection and Traffic Safety Operations	Carryover from 2016 TNR	Preston Fall City Rd SE & SE 43rd St	Realign intersection	\$ 4,500,000		Snoqualmie Valley NE King County
ITS-14	ITS	Carryover from 2016 TNR	Preston Fall City Rd SE: From I-90 to State Route 202	Cameras, road sensors, weather station, data collection station	\$ 400,000		Snoqualmie Valley NE King County
RC-15-4	Reconstruction	Carryover from 2016 TNR	Preston Fall City Road: From the 7600 block to 7800 block	Reconstruct roadway	\$ 1,272,000		Snoqualmie Valley NE King County
RC-7	Reconstruction	Carryover from 2016 TNR	Neal Rd SE: From State Route 203 to State Route 203	Reconstruct road at re-occurring sinkhole	\$ 3,773,000		Snoqualmie Valley NE King County
VRS-20-13	Vulnerable Road Segments	New for 2020 TNR	SE David Powell Rd	Reinforce slope	\$ 1,000,000		Snoqualmie Valley NE King County

Appendix A

Map Number 15: Snoqualmie

TNR Project Number	TNR Category	Project Status*	Location	Scope	Estimated Cost	Notes	Community Service Area
VRS-20-15	Vulnerable Road Segments	New for 2020 TNR	356th Dr SE	Construct horizontal drains and retaining wall	\$ 1,000,000		Snoqualmie Valley NE King County
VRS-20-2	Vulnerable Road Segments	New for 2020 TNR	SE Reining Road	Elevate roadway	\$ 50,000		Snoqualmie Valley NE King County
VRS-20-8	Vulnerable Road Segments	New for 2020 TNR	SE David Powell Rd	Project will repair existing failing revetment and extend MSE wall to prevent undercutting.	\$ 2,200,000		Snoqualmie Valley NE King County
RC-15-5	Vulnerable Road Segments	Carryover from 2016 TNR	Upper Preston Rd: From SE 97th St to SE 97th St	Stabilize downhill side and improve drainage	\$ 3,015,000		Snoqualmie Valley NE King County
RC-17	Vulnerable Road Segments	Carryover from 2016 TNR	SE 24th St: From 309th Ave SE to W Snoqualmie River Rd SE	Armor shoulders to reduce road washouts	\$ 433,000		Snoqualmie Valley NE King County
RC-40	Vulnerable Road Segments	Carryover from 2016 TNR	Neal Rd SE: From State Route 203 to State Route 203	Armor shoulders to reduce road washouts	\$ 1,496,000		Snoqualmie Valley NE King County

Appendix A

Map Number 16: Tiger Mountain/Hobart

TNR Project Number	TNR Category	Project Status*	Location	Scope	Estimated Cost	Notes	Community Service Area
BR-909B	Bridge	Carryover from 2016 TNR	Clough Creek Bridge: 415th Way SE & SE 141st St	Replace bridge	\$ 1,613,000		Snoqualmie Valley NE King County
DR-20-36	Drainage	New for 2020 TNR	11429 Upper Preston Rd SE	Replace/construct drainage infrastructure	\$ 600,000		Snoqualmie Valley NE King County
DR-20-45	Drainage	New for 2020 TNR	13918 415 Way SE	Replace/construct drainage infrastructure	\$ 300,000		Snoqualmie Valley NE King County
DR-20-58	Drainage	New for 2020 TNR	Kerriston Rd 4 Mi Past End Of Pvmnt - Marker 44	Replace/construct drainage infrastructure	\$ 450,000		Greater Maple Valley/ Cedar River
DR-15-18	Drainage	Carryover from 2016 TNR	276th Ave SE at Carey Creek	Replace/construct drainage infrastructure	\$ 4,322,000		Greater Maple Valley/ Cedar River
GR-57	Guardrail	Carryover from 2016 TNR	SE 208th St: From 276th Ave SE to end of route	Construct guardrail	\$ 200,000		Greater Maple Valley/ Cedar River
GR-15-16	Guardrail	Completed	SE 131st St: From 409th Ave SE to 415th Way SE	Construct guardrail	\$ -		Snoqualmie Valley NE King County
RC-125	Reconstruction	Carryover from 2016 TNR	276th Ave SE: From Highway 18 to SE 200th St	Reconstruct roadway	\$ 5,002,000		Greater Maple Valley/ Cedar River
RC-126	Reconstruction	Carryover from 2016 TNR	276th Ave SE: From SE 200th St to SE 216th St	Reconstruct roadway	\$ 7,810,000		Greater Maple Valley/ Cedar River

Appendix A

Map Number 17: Ravensdale

TNR Project Number	TNR Category	Project Status*	Location	Scope	Estimated Cost	Notes	Community Service Area
DR-20-65	Drainage	New for 2020 TNR	346 Av SE And SE 268 St	Replace/construct drainage infrastructure	\$ 450,000		Greater Maple Valley/ Cedar River
GR-11	Guardrail	Carryover from 2016 TNR	SE 309th St: From Cumberland-Kanasket Rd SE to SE 310th St	Construct guardrail	\$ 200,000		Greater Maple Valley/ Cedar River
GR-95	Guardrail	Carryover from 2016 TNR	SE Courtney Rd: From Kanasket-Kangley Rd to end of route	Construct guardrail	\$ 55,000		Greater Maple Valley/ Cedar River
RC-136	Reconstruction	Carryover from 2016 TNR	Retreat Kanasket Rd: From SE Kent Kangley Rd to Cumberland Kanasket Rd SE	Reconstruct roadway	\$ 14,874,000		Greater Maple Valley/ Cedar River

Appendix A

Map Number 18: Cumberland

TNR Project Number	TNR Category	Project Status*	Location	Scope	Estimated Cost	Notes	Community Service Area
BR-3035A	Bridge	Carryover from 2016 TNR	Coal Creek Bridge: SE Lake Walker Rd at Coal Creek. 1.5 mile southeast of Veazie-Cumberland Rd SE	Replace bridge	\$ 3,139,000		SE King County
DR-20-74	Drainage	New for 2020 TNR	SE Kuzak Rd And Cumberland-Kanasket Rd	Replace/construct drainage infrastructure	\$ 900,000		SE King County
OP-INT-72	Intersection and Traffic Safety Operations	Deleted	Cumberland Kanaskat Rd SE & SE Green River Headworks Rd	Reconstruct intersection with signal improvements	\$ -	Project determined to be outside of TNR planning horizon.	SE King County

Appendix A

Map Number 19: Mount Si

TNR Project Number	TNR Category	Project Status*	Location	Scope	Estimated Cost	Notes	Community Service Area
BR-364A	Bridge	Carryover from 2016 TNR	Deep Creek Bridge: North Fork Rd SE, about 13.7 miles north of North Bend	Replace bridge	\$ 2,990,000		Snoqualmie Valley NE King County
DR-20-34	Drainage	New for 2020 TNR	North Fork Rd SE, 5.3 Miles Past Ernies Grove Rd	Replace/construct drainage infrastructure	\$ 450,000		Snoqualmie Valley NE King County
RC-8	Reconstruction	Carryover from 2016 TNR	N Fork Rd SE: From 428th Ave SE to Lake Hancock Rd	Road reconstruction and drainage infrastructure	\$ 10,925,000		Snoqualmie Valley NE King County
RC-19	Vulnerable Road Segments	Completed	North Fork Rd SE & N Fork Snoqualmie River	Construct retaining wall	\$ -		Snoqualmie Valley NE King County

Appendix A

Map Number 20: East North Bend

TNR Project Number	TNR Category	Project Status*	Location	Scope	Estimated Cost	Notes	Community Service Area
BR-122I	Bridge	New for 2020 TNR	North Fork	Replace bridge	\$ 22,282,000		Snoqualmie Valley NE King County
BR-122N	Bridge	Carryover from 2016 TNR	Tate Creek Bridge: SE 73rd St at Tate Creek, west of 440th Ave SE	Replace bridge	\$ 5,943,000		Snoqualmie Valley NE King County
DR-20-25	Drainage	New for 2020 TNR	SE Reinig Rd east of 428 AVE SE	Replace/construct drainage infrastructure	\$ 2,100,000		Snoqualmie Valley NE King County
GR-20-1	Guardrail	New for 2020 TNR	428th Ave SE: From SE 108th St to SE Reinig Rd	Construct guardrail	\$ 240,000		Snoqualmie Valley NE King County
GR-15-3	Guardrail	Completed	437th Ave SE: From Cedar Falls Way SE to SE 150th St	Construct guardrail	\$ -		Snoqualmie Valley NE King County
GR-78	Guardrail	Completed	SE Middle Fork Rd: From North Bend city limits to 496th Ave SE	Construct guardrail	\$ -		Snoqualmie Valley NE King County
OP-RD-39	Intersection and Traffic Safety Operations	Deleted	SE Mount Si Rd: From 452 AVE SE to 800' E	Realign roadway	\$ -	Project determined to be outside of TNR planning horizon.	Snoqualmie Valley NE King County
OP-RD-54	Reconstruction	Carryover from 2016 TNR	SE Middle Fork Rd: From 496th Ave SE to 476th Ave SE	Reconstruct roadway	\$ 6,757,000		Snoqualmie Valley NE King County
VRS-20-21	Vulnerable Road Segments	New for 2020 TNR	SE Middle Fork Road lower couplet	Construct retaining walls, widen road, improve clear zone and sight distance.	\$ 17,080,000		Snoqualmie Valley NE King County
VRS-20-3	Vulnerable Road Segments	New for 2020 TNR	SE 92nd Street	Install box culvert to reduce flooding	\$ 750,000		Snoqualmie Valley NE King County

Appendix A

Map Number 21: Skykomish

TNR Project Number	TNR Category	Project Status*	Location	Scope	Estimated Cost	Notes	Community Service Area
BR-509A	Bridge	Carryover from 2016 TNR	Baring Bridge: Index Creek Rd over the South Fork Skykomish River, west of Highway 2	Replace bridge	\$ 16,684,000		Snoqualmie Valley NE King County
DR-20-27	Drainage	New for 2020 TNR	NE 179 St at 644 AVE NE	Replace/construct drainage infrastructure	\$ 450,000		Snoqualmie Valley NE King County
GR-15-12	Guardrail	Carryover from 2016 TNR	NE Old Cascade Hwy: From State Route 2 to Skykomish city limits	Construct guardrail	\$ 720,000		Snoqualmie Valley NE King County
RC-57	Reconstruction	Carryover from 2016 TNR	NE Old Cascade Highway at Miller River	Permanent road end closure improvements	\$ 5,050,000		Snoqualmie Valley NE King County
RC-55	Vulnerable Road Segments	Carryover from 2016 TNR	NE Money Creek Rd & Money Creek	Construct retaining wall	\$ 935,000		Snoqualmie Valley NE King County

Appendix A

Map Number 21: Skykomish

TNR Project Number	TNR Category	Project Status*	Location	Scope	Estimated Cost	Notes	Community Service Area
BR-999K2	Bridge	New for 2020 TNR	Scenic Bridge	Replace bridge	\$ 2,579,000		Snoqualmie Valley NE King County