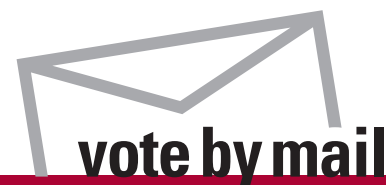


February 9, 2010 Special Election

King County

Official Local Voters' Pamphlet



Published by:



King County
Elections

For more information call 206-296-VOTE (8683) or visit www.kingcounty.gov/elections



King County

Department of Elections

Dear King County Voter:

It's election time again and even though there may be only a few issues to vote on in this election, each one is important. Make sure you read the directions and your ballot options top to bottom, front to back!

There have also been some changes made that may affect the way you return your ballot, beginning with this February special election. As many of you may be aware, King County had to make some hard choices to balance the 2010 operating budget. This included cuts to all departments in services that citizens want and depend on. Elections, like all other departments, was asked to identify services that could be reduced or eliminated without preventing our ability to successfully conduct elections.

As a cost savings measure, Elections has been asked to reduce the number of ballot drop boxes as well as the operational hours of accessible voting centers. We will continue to have two 24-hour ballot drop boxes available to voters who want to return their ballot without postage. (Locations and operating hours are listed on the next page of this pamphlet.)

Although there have been some cuts to services, we can all be proud of the strides made in our performance and the efficiencies achieved by becoming a vote-by-mail county. In last November's general election, there was not a single discrepancy in over 587,000 ballots counted. Conducting elections by mail has also substantially streamlined our election administration and, as a result, the need for so many temporary staff.

As we enter into a new decade, there will be many opportunities as voters for you to help shape it. Remember, every vote makes a difference. I encourage you to study the issues and cast your mail ballot by Tuesday, February 9.

Sincerely,

Sherril Huff
Director
King County Elections

Ballot drop boxes + accessible voting options

Attention: Elections has reduced the number of ballot drop boxes as well as the operational hours of accessible voting centers.

Ballot drop boxes

You can return your voted ballot at one of our drop box locations. Ballot drop boxes will be open on Friday, January 22 and **close at 8 p.m. on Election Day, February 9.**

King County Elections

9010 East Marginal Way S, Tukwila 98108

King County Administration Building

500 4th Ave, Seattle 98104

accessible voting centers

Voters with disabilities can cast a private and independent ballot at the following locations, dates and times.

King County Elections

9010 East Marginal Way S, Tukwila 98108

Weekdays, January 20 - February 8:

8:30 a.m. – 4:30 p.m.

Tuesday, February 9: 7 a.m. – 8 p.m.

Bellevue City Hall

450 110th Avenue NE, Bellevue, 98009

Seattle, Union Station

401 S Jackson St, Seattle, 98104

Monday, February 8: 10 a.m. – 5 p.m.

Tuesday, February 9: 7 a.m. – 8 p.m.

Voter information

Registering to vote is easy

If you meet the following qualifications you can register to vote online, by mail or in person

To register to vote you must be:

- a citizen of the United States;
- a legal resident of Washington State;
- at least 18 years old by election day.

King County votes by mail

If you do not receive your mail ballot or lose your ballot, please notify King County Elections.

Registration deadlines

While you may register to vote at any time, there are registration deadlines prior to each election. You must register by mail or online at least 29 days before an election. If you are a new voter in Washington State, you may register in person at the King County Elections office up to 8 days before an election.

Keep your voter registration current

You can use the online or mail-in voter registration form to let King County Elections know when you move or change your name. You must re-register or transfer your registration at least 29 days before the election to be eligible to vote in your new precinct.

For more information, King County Elections can be reached at the following:

Voter hotline: 206-296-VOTE (8683)
1-800-325-6165
TTY 206-296-0109

Online: www.kingcounty.gov/elections

E-mail: elections@kingcounty.gov

In-person: King County Elections
9010 East Marginal Way S
Tukwila, WA 98108

Mail: King County Elections
919 SW Grady Way
Renton, WA 98057

King County Rural Library District Proposition No. 1

The Board of Directors of the King County Rural Library District adopted Resolution No. 2009-11 concerning an increase in the District's regular property tax levy. In order to provide continued funding for the normal operation and maintenance of the King County library system, this proposition would authorize the District to restore regular property tax levy rate to \$0.50 per thousand dollars of assessed value for collection in 2011, and to increase the levy in each year thereafter as allowed by chapter 84.55 RCW. Should this proposition be approved?

YES

NO

Statement in favor

KCLS libraries are busier than ever, but I-747 revenue restrictions will force reductions in library hours, resources and services unless we restore full funding for 2011. One year of revenue restoration will help KCLS maintain quality service.

KCLS helps families raise strong readers

Early literacy programs help families teach babies language skills that last a lifetime.

KCLS helps students succeed

KCLS helps children love learning, and enables parents to guide children to their highest educational goals. KCLS is even more important as school libraries cut services.

KCLS helps job-seekers

In 2009, thousands of residents turned to KCLS for help finding job-related information, resume-writing resources, computer skills classes, small business support, and financial research.

Voting "no" will force cuts in library services

KCLS has maintained quality libraries within a severely reduced budget since 2001 despite a 43% growth in use. Failure to restore the full legal property tax level for 2011 will force reductions in materials, open hours, computers, and maintenance.

One year of restored funding will maintain quality service

Voting **'approved'** restores full library funding for one year. For a \$400,000 home, that's just \$32 more in 2011 for libraries--less than one hardcover book.

Vote **Yes** on Proposition 1!

Rebuttal of statement in opposition

Libraries offer more than entertainment.

More than 1.2 million residents use KCLS' 45 libraries, choosing from 4 million books.

Adults find job leads, resume help and business tools.

Preschoolers build lifelong learning skills.

Students in 18 school districts get homework help.

Seniors stay active and involved in learning.

About \$32 more for one year ensures books, computers and learning tools for all.

KCLS is a solid investment in our future.

Yes on Prop 1.

Statement submitted by: Dean Smith, Rachael Levine, Doris Townsend TruthInTaxation@aol.com

Explanatory statement

King County Rural Library District (King County Library System or KCLS) receives 96% of its operating revenue from property taxes. Since 2001, State law has limited growth in property tax revenues to 1% annually without voter approval (a levy lid lift). In 2002, voters approved a one-year levy lid lift for KCLS to restore the full legally authorized rate limitation of 50 cents per \$1,000 of assessed valuation. This temporary restoration sustained operations as planned for eight years, during which library usage increased 43%. Proposition 1 would authorize KCLS to restore its property tax levy rate to 50 cents per \$1,000 of assessed valuation, for collection in 2011, and to use that levy amount as the basis for KCLS's property tax limitations in subsequent years.

Approval of this Proposition would enable KCLS to sustain library service at current levels at all 45 libraries, including programs, building maintenance, computers, new books and other materials. The restored revenue also would enable KCLS to maintain outreach services to elderly and homebound, low-income daycares and community centers.

Rejection of this Proposition would lead to 10-15% budget cuts across the organization beginning in 2011 in order to operate within current revenue restrictions, limiting funding for books, computers and building maintenance. Effects of these cuts may include increased wait times for popular book titles, reduced availability of computers and less frequent maintenance and upkeep of libraries. Library staff and hours of operation will be affected in future years without this short-term restoration of revenue.

Statement in opposition

Public libraries are important – together with education, police and other valuable services.

However, as public schools and government agencies reduce expenses during the worst recession since 1929, library management coldheartedly disregards thousands of unemployed, including families losing homes overburdened already by overassessed property taxes.

This should not surprise anyone.

The state Public Disclosure Commission's Compliance Director documented this same management's unlawful misuse of tax dollars for "communications [that] were not a fair and balanced presentation of the facts. The effort constituted a campaign promoting passage of Proposition 1, in violation of RCW 42.17.130" (www.pdc.wa.gov/archive/compliance/reports/pdf/2005/KingCoLibraryMemo.pdf).

Library Board members disciplined that Machiavellian lawbreaking by raising its CEO's salary to \$160,620.82.

Library officials also negligently refuse to address costly nonessentials.

Indeed, KCLS continues to buy advertising for its "entertainment" diversions, which multiply discipline problems, e.g., children left to play videogames, for hours, abandoned repeatedly at closing time (including by parents gambling at Emerald Downs according to Board discussion on December 15, 2009).

Taxpayers apparently cannot stop public libraries from becoming videogame arcades – disrupting research and reading – but we can decide that financing "entertainment" by raising property taxes on citizens being foreclosed out of their homes is **"An Indecent Proposal"** (KCLS Call Number VT-Fic-I).

Rebuttal of statement in favor

Government revenues are down – along with incomes of many taxpayers already generously supporting libraries with \$173.60 in annual taxes on "average" \$395,000 family homes – so library officials authorize \$1 million for this Special Election's costs to raise library taxes higher repeatedly.

Board Minutes document abuse of taxpayers from failures to save \$500,000 by simply waiting for this year's Primary **because** the CEO insists wastefully expensive Special Elections "turn out a lot of supportive voters" (8/25/2009).

Statement submitted by: Will Knedlik

Enumclaw School District No. 216 Proposition No. 1 Replacement Maintenance and Operation Levy

The Board of Directors of Enumclaw School District No. 216 adopted Resolution No. 946, concerning a proposition to finance maintenance and operation expenses. This proposition would authorize the District to meet the educational needs of its students by levying the following excess taxes, in place of an expiring levy, on all taxable property within the District, for support of the District's General Fund maintenance and operation expenses:

<u>Collection Year</u>	<u>Approximate Levy Rate/\$1,000 Assessed Value</u>	<u>Levy Amount</u>
2011	\$3.05	\$9,238,151
2012	\$3.05	\$9,422,914
2013	\$3.05	\$9,894,060
2014	\$3.05	\$10,388,763

all as provided in Resolution No. 946. Should this proposition be approved?

- YES
 NO

Statement in favor

THIS LEVY WILL NOT INCREASE YOUR TAX RATE! THIS IS A REPLACEMENT LEVY!

This 4-year Maintenance and Operations Levy (M & O) replaces the current levy. These funds are an integral part of our school district. Approval allows the district to continue programs and services at their current level. This levy pays for 19% of ALL regular instruction. Levies bridge the gap between state funding and the actual cost of meeting the educational needs of our students. This M & O Levy enables our district to pay for teaching staff not included in state allocations, additional instructional program, textbooks, athletics, extra-curricular activities, technology, security and transportation.

Our children need these funds to continue to grow and prosper in a positive and progressive learning environment. Your YES vote ensures this will happen.

Statement submitted by: Suzanne Lewis, Bob Horn and Tina McGann

Explanatory statement

Passage of Proposition 1 would authorize the Enumclaw School District to replace an existing four-year maintenance and operation levy that will expire at the end of calendar year 2010. The proposed four-year replacement maintenance and operation levy would authorize collection of taxes to provide \$9,238,151 in 2011, \$9,422,914 in 2012, \$9,894,060 in 2013 and \$10,388,763 in 2014. The tax levy rate required to produce these levy amounts is estimated to be \$3.05 per \$1,000 of assessed value and would equate to \$76.25 per month for a \$300,000 home.

The taxes collected by this levy will be deposited in the District's General Fund and used to meet the educational needs of students, operate educational programs and pay the general expenses maintenance and operation that are not fully funded by the State. These expenses include, but are not limited to, maintaining class sizes, classified and certificated staffing, supplies and materials, athletic programming, transportation services, extracurricular programs, special education, utilities, and facility maintenance and operation.

Exemptions from taxes may be available to homeowners who are 61 or older, or disabled, and who meet certain income requirements. For more information, call the King County Department of Assessments 206.296.3920.

Statement in opposition

No statement submitted.

Statements in favor of and in opposition to a ballot measure are submitted by committees appointed by the jurisdiction. No persons came forward to serve on the committee and to write a statement in opposition. If you would like to be involved with a committee in the future please contact the jurisdiction.

Tahoma School District No. 409 Proposition No. 1 Replacement of Existing Educational Programs and Operations Levy

The Board of Directors of Tahoma School District No. 409 adopted Resolution No. 2009-18 concerning a replacement levy for education. This replacement levy funds district education programs and school operations, including classroom support, athletics, maintenance, transportation and school supplies, and authorizes the following excess levies to replace an expiring levy on all taxable property within the District:

Collection Year	Approximate Levy	
	Rate/\$1,000	Levy Amount
2011	\$3.40	\$16,352,000
2012	\$3.48	\$17,386,000
2013	\$3.62	\$18,827,000
2014	\$3.77	\$20,403,000

Should this proposition be approved?

- YES
 NO

Statement in favor

When we say, "Vote Yes! Invest in Tahoma kids," we are describing how our local levy dollars are being spent. Every dollar of the Replacement Educational Programs and Operations Levy is an investment in our kids' future as well as the future of our community and our nation. By now you are probably familiar with why we need this levy: There is not nearly enough money from the state to pay for educating our children. Local levy money makes it possible for kids to have the teachers, support staff, transportation, supplies, and educational programs and materials that are necessary to help them prepare for college and careers. This is tax money that is very well spent.

Levies like this one have earned the support of Tahoma voters for more than 30 years. This levy will continue providing \$1 of every \$5 spent on the people and support that is necessary to maintain our schools. Tahoma students consistently rank among the top 10 percent in our state on standardized tests. Newsweek magazine lists Tahoma High School among the top 5 percent of all U.S. public high schools. Voting yes will provide the funding necessary to continue this outstanding work.

Statement submitted by: Erin Weaver and Barbara Kennedy
(206) 669-7159 or (206) 235-3842

Explanatory statement

This levy replaces one that expires at the end of 2010. This levy pays for school staff, education programs, classroom support, athletics, maintenance, utilities, transportation and school supplies that are not funded or are under-funded by the state. The levy represents about 19 percent of the school district's general fund, which pays for day-to-day operations.

If this replacement levy is approved, taxable property within the district would continue to be taxed to pay for school programs and operations over the next four years, with the estimated rate ranging from \$3.40 to \$3.77 per year for each thousand dollars of assessed property value. This levy would generate funding in the amount of \$16,352,000 in the first year, with the total increasing each year up to \$20,403,000 by the fourth year of the levy.

Statement in opposition

No statement submitted.

Statements in favor of and in opposition to a ballot measure are submitted by committees appointed by the jurisdiction. No persons came forward to serve on the committee and to write a statement in opposition. If you would like to be involved with a committee in the future please contact the jurisdiction.

Tahoma School District No. 409 Proposition No. 2 Capital Levy for Technology

The Board of Directors of Tahoma School District No. 409 adopted Resolution No. 2009-19 concerning this proposition. This proposition authorizes acquiring educational technology, equipment and training to support instruction; and authorizes the following excess levies for such purposes on all taxable property within the District:

<u>Collection Year</u>	<u>Approximate Levy Rate/\$1,000 Assessed Value</u>	<u>Levy Amount</u>
2011	\$0.57	\$2,750,000
2012	\$0.55	\$2,750,000
2013	\$0.53	\$2,750,000
2014	\$0.51	\$2,750,000

Should this proposition be approved?

YES

NO

Statement in favor

Voting yes for the replacement Technology Levy ensures that our students will have current technology tools and skills. Tahoma's approach to using technology in the classroom places the strongest emphasis on matching technology with teaching and learning, not the other way around. All of Tahoma's classroom technology tools must fit the district's curriculum and its learning goals. A detailed technology plan provides guidance for all technology tools that are used in the classroom. A committee of parents and community members regularly meets with school staff members to examine, discuss and help guide the use of technology tools in our schools.

Tahoma voters said yes four years ago when they were asked to provide levy funds for classroom technology tools. Since then, the school district has used the money to catch up through improved and expanded infrastructure, staff training and new equipment. The challenge now is to maintain those improvements and keep pace with ever-changing technology.

Technology touches all of our lives. It has opened new doors to learning for our students. Please help keep that door open wide by voting yes for the Technology Levy.

Statement submitted by: Erin Weaver and Barbara Kennedy
(206) 669-7159 or (206) 235-3842

Explanatory statement

This levy replaces one that expires at the end of 2010. This levy pays for educational technology tools, including computers, software, network infrastructure, document cameras, projectors, and other technology needs. It also pays for staff to maintain equipment and assist teachers and students with training and support.

The Technology Levy is the primary source of funds for electronic instructional tools and training. If the levy is approved, taxable property within the district would continue to be taxed to pay for school technology over the next four years, with the estimated rate ranging from \$0.51 to \$0.57 per year for each thousand dollars of assessed property value. This levy would generate funding in the amount of \$2,750,000 for each year of the levy.

Statement in opposition

No statement submitted.

Statements in favor of and in opposition to a ballot measure are submitted by committees appointed by the jurisdiction. No persons came forward to serve on the committee and to write a statement in opposition. If you would like to be involved with a committee in the future please contact the jurisdiction.

Maple Valley Fire & Life Safety (King County Fire Protection District No. 43) Proposition No. 1

Shall the Board of Commissioners of Maple Valley Fire & Life Safety (King County Fire Protection District No. 43) be increased from three members to five members?

- YES
 NO

Statement in favor

The value of a five member board:

With a population of 43,000 in fire district 43, the power of the governing body should not be vested in a majority vote of two commissioners. The Tahoma school district board is comprised of 5 members; the city of Maple Valley is governed by a 7 member council. Likewise, a broader base of representation is needed for the taxpaying residents of the fire district and to provide a broader community perspective.

Problem situations arise with a three commission board in the absence of one of the members. Two comprise a quorum to conduct business, however a stalemate or deadlock can hamper decision making.

With three commissioners any discussion of district business by two of them, when not in an open public meeting, can be a violation of the Open Public Meetings Act. When board members travel together, or just talk, it is difficult to avoid such violations. Committee work on district issues by two commissioners is also prohibited making it harder to complete district business efficiently. Five commissioners offer many opportunities to gather in subcommittees to complete the work at hand.

Vote YES for broader representation and efficiency on February 9.

Statement submitted by: Dwight Van Zanen and Bill Van Ruff

Explanatory statement

Washington State Law allows increasing the board of commissioners of a fire protection district from three to five, with voter approval. The Board of Fire Commissioners for Maple Valley Fire and Life Safety (King County Fire District No. 43) has passed a resolution determining that it would be in the best interest of the district and its citizens to increase the number of fire commissioners from three to five.

The purpose of expanding the Board from three to five members is to provide broader representation from the community. A five person Board will also improve efficiency and communication. Under state law, two commissioners constitute a quorum with a three person Board, therefore, two commissioners cannot discuss district business outside of an open public meeting. Three Board members constitute a quorum with a five person Board which allows dialog between two board members without violating state law. The Fire Chief and the Board of Commissioners agree that this will better serve the public and improve the efficiency of fire district business.

The cost associated with this change is minimal. State law establishes the compensation rate for Fire Commissioners at \$104 per day when they conduct Fire District business. Maple Valley Fire and Life Safety generally conduct two business meetings per month. Two additional commissioners will cost an estimated \$5000 annually.

The newly created positions on the Board will be filled pursuant to State Law with any person appointed being required to seek voter approval by election to retain the position.

Statement in opposition

No statement submitted.

Statements in favor of and in opposition to a ballot measure are submitted by committees appointed by the jurisdiction. No persons came forward to serve on the committee and to write a statement in opposition. If you would like to be involved with a committee in the future please contact the jurisdiction.

Reading your voters' pamphlet

Why are only some measures in the voters' pamphlet?

For a special election, jurisdictions are required to submit a resolution requesting that King County Elections publish a voters' pamphlet. Jurisdictions are not required to participate in the voters' pamphlet.

Why are there measures on my ballot that are not in my voters' pamphlet?

Your ballot is correct. The measures on your ballot are the measures for which you are eligible to vote and reflect the districts in which you reside. Not all jurisdictions chose to participate in the voters' pamphlet.

You can find all the measures for which you are eligible to vote by using the online voter guide at www.kingcounty.gov/elections.

Why are there measures in the voters' pamphlet that are not on my ballot?

Your ballot is correct. The measures on your ballot are the measures for which you are eligible to vote and reflect the districts in which you reside.

Voter pamphlets are distributed to households

within certain zip codes, other districts participating in the election may fall within the same zip code. For example, two school districts can share the same zip code but you only reside in one school district.

What is an explanatory statement?

An explanatory statement is prepared by each district's attorney stating the effect of the ballot measure if passed into law.

How are committees in favor of or in opposition to a measure formed?

Districts choosing to participate in a voters' pamphlet are responsible for appointing committee members who agree to write statements.

The statements are a way to persuade voters to vote for or against the measure.

King County Elections is not responsible for the content of the statements.

Your personal voter guide

The screenshot shows a web form titled "Your Voter Guide". At the top, it says "Find your registration status and view your sample ballot". Below this, there are two input fields for "First name" and "Last name". Underneath, there is a "Date of birth (MM/DD/YYYY)" field. At the bottom left is a "Submit" button, and at the bottom right is a link that says "Search by address".

www.kingcounty.gov/elections

- View your voter registration information.
- See which districts you are eligible to vote in for this election.
- Read the ballot measures you are eligible to vote on for this election.
- Read the explanatory statement and statements in favor of and in oppositions to a measure for those jurisdictions that chose to participate in the voters' pamphlet.
- Read the full text of a ballot measure resolution submitted by the jurisdiction.

King County votes by mail

All registered voters eligible for this special election will soon receive a ballot in the mail.

Follow these simple steps to vote by mail

1. Vote. Following the instructions on your ballot, make your selections using a blue or black pen.
2. Place your ballot in the security envelope and seal it to ensure your ballot remains secret.
3. Place the sealed security envelope into the mailing envelope. Read and sign the oath on the return envelope, then seal the envelope. Your signature is as important as your vote; make sure you take the time to sign the return envelope.
4. Return your voted ballot. All voted ballots must be received at a designated drop box by 8 p.m. on election night or be postmarked by the U.S. Postal Service on or before election day.

Tracking your ballot online

Voters who are eligible to vote in an election can now track their ballot at several points. Visit the ballot tracker link at www.kingcounty.gov/elections.

Track your ballot
packet



Mail ballot tracking

- Track point #1: Your ballot packet was assembled and delivered to the U.S.P.S. by Elections.
- Track point #2: King County received your returned ballot packet.
- Track point #3: Your signature was verified and you will be credited with voting.

Reading your ballot

Washington voters may have the opportunity to vote in three special elections this year, typically on levies or bond measures.

Even though there may be only a few issues to vote on in this election, each one is important.

Make sure you read the directions and your ballot options top to bottom, front to back.

For more information

For more information, King County Elections can be reached at the following:

Voter hotline: 206-296-VOTE (8683)
1-800-325-6165
TTY 206-296-0109

Online: www.kingcounty.gov/elections

E-mail: elections@kingcounty.gov

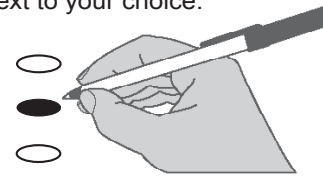
In-person: King County Elections
9010 East Marginal Way S
Tukwila, WA 98108

Mail: King County Elections
919 SW Grady Way
Renton, WA 98057

Instructions

Making selections

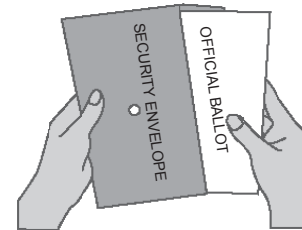
Use a dark pen to completely fill in the oval next to your choice.



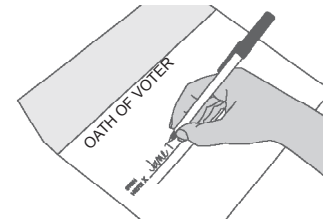
! Do not cut, tear or damage ballot.

Returning the ballot

Insert completed ballot into security envelope.



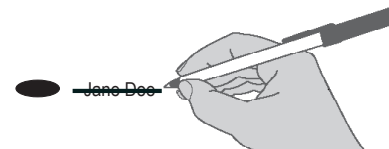
Insert security envelope containing completed ballot into return envelope. Sign the oath on the return envelope.



Optional

Making corrections

To make a correction, draw a line through the selection. You then have the option of making another choice.



NONPROFIT ORG.
U.S. POSTAGE
PAID
SEATTLE, WA
PERMIT NO. 1455

ECRWSS

Residential Customer

98006 98010 98025 98027 98038 98042 98051 98092
King County Carrier Routes Only
98022

Edition 4

King County produces all election materials in both English and Chinese. If you, or someone you know, needs language assistance, call King County Elections and request a ballot and voting material in Chinese.

為符合聯邦法律，此資料有中文版本。