



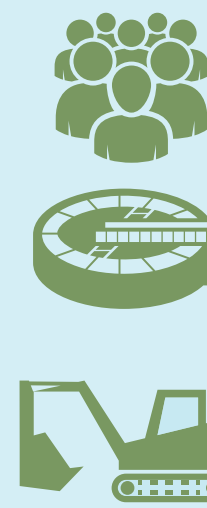
WHAT'S THE PROJECT?

West Point Treatment Plant

King County is updating the underground Water Reservoir Facility at Discovery Park. We are committed to protecting public health and promoting a healthy environment.

The facility has two reservoirs of drinkable and process water. Drinking water is used at West Point Treatment Plant, the lighthouse and drinking fountains in the park. Process water is used for industrial purposes at the treatment plant. The project will upgrade the facility to meet current standards and allow safe and efficient access for annual inspections required by Seattle Public Utilities. Installing a 460-foot pipe from the reservoir to a discharge site will keep overflows away from the treatment plant and other populated areas. This project protects water sources and equipment.

FAST FACTS



West Point Treatment Plant serves more than 700,000 people.

Treats wastewater from homes and businesses in Seattle, Shoreline, north Lake Washington, north King County and parts of south Snohomish County.

The treatment plant was built in 1966. The reservoir was built around the same time.



King County

Department of Natural Resources and Parks
Wastewater Treatment Division



WHEN AND WHERE ARE WE WORKING?

West Point Treatment Plant

SCHEDULE

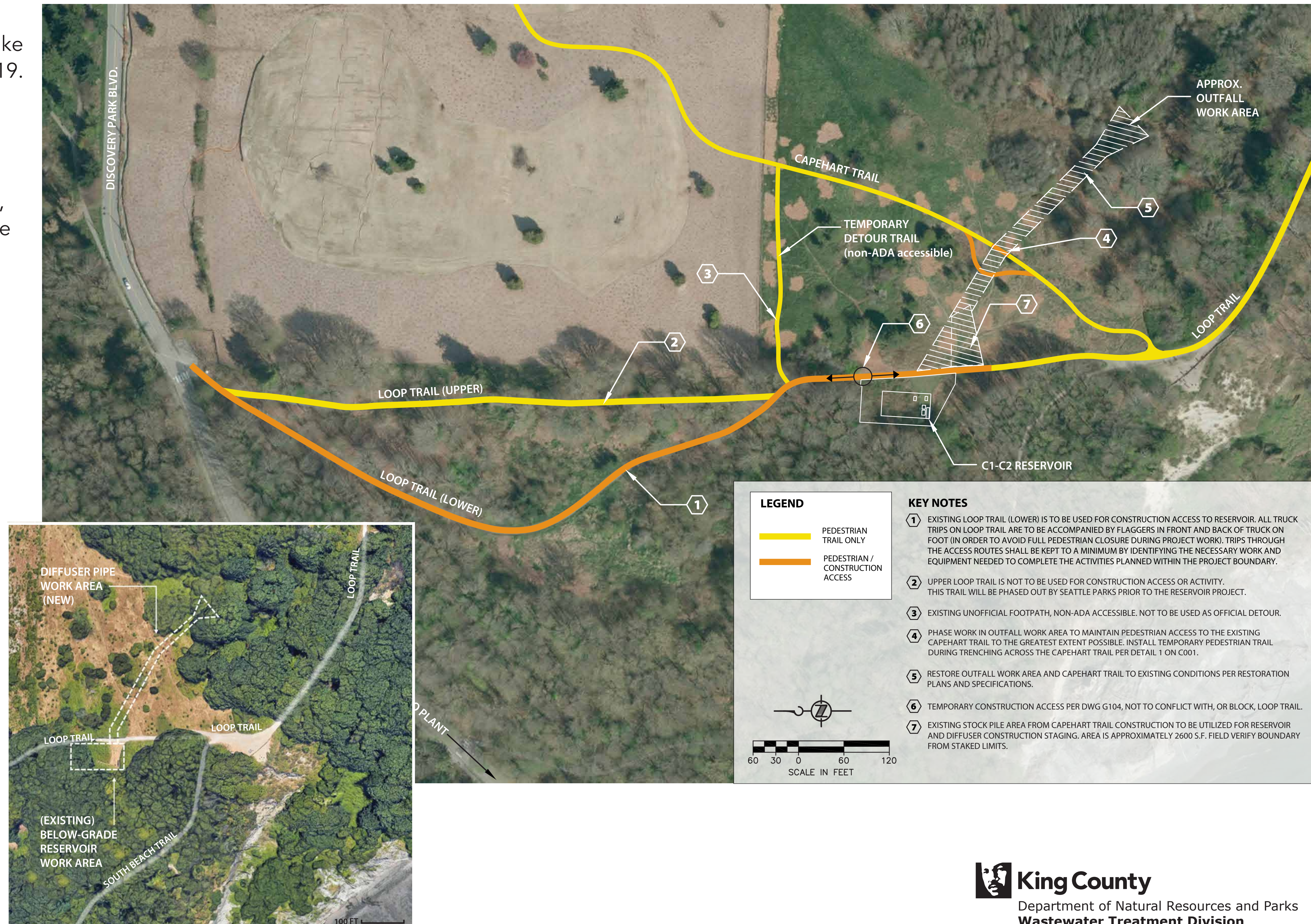
Construction begins Summer 2019 and will take three to five months. We'll wrap up in Fall 2019.

WHAT YOU WILL SEE

Construction will take place at an existing reservoir near Loop Trail. A pipe will be installed from the reservoir and run southeast, through the new Capehart Trail, to a discharge site with ballast rock.

WHAT YOU WILL NOTICE

- Affected section of Loop Trail is 0.2 miles, from Discovery Park Blvd to reservoir.
- This section of Loop Trail will remain open to trail users, but will also be accessed by construction vehicles escorted by flaggers on foot.
- Section of Loop Trail may be intermittently closed during heavy construction vehicle use.
- A section of Capehart Trail will be temporarily closed and contractors will create a detour.
- Demolition of concrete hatches on top of reservoir.
- Removal of trees and vegetation.
- Excavation and trenching.



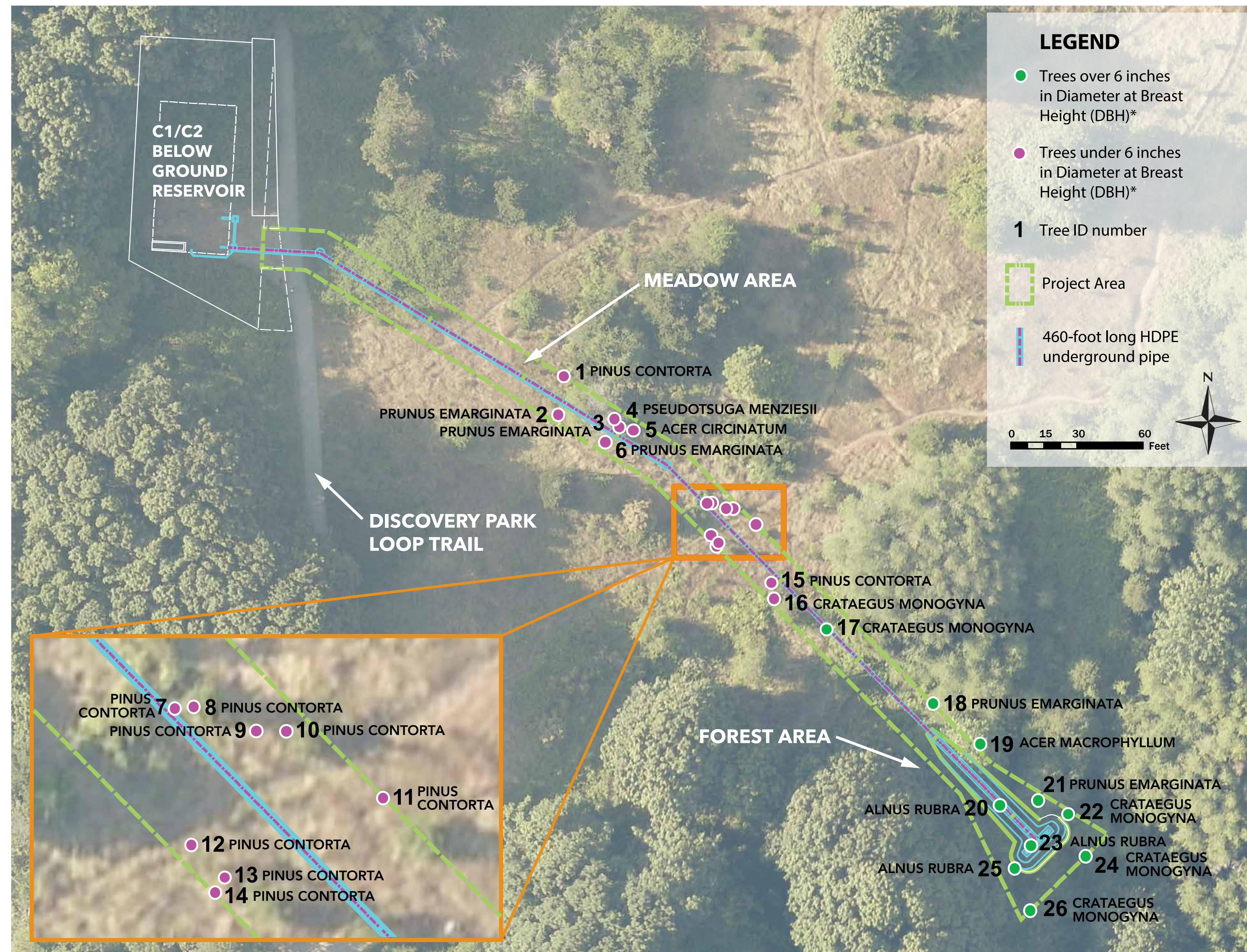


TREE REMOVAL AND PROTECTION

West Point Treatment Plant

Impact on trees

Approximately 26 trees are recommended for removal. We are committed to replacing two trees for every one tree removed, per the City of Seattle's requirement. 19 of the 26 trees identified are under 6 inches in diameter. The remaining trees are larger and vary in size, up to a 25-inch red alder. Tree species recommended for protection include lodgepole pine, Oregon ash, bitter cherry, and bigleaf maple.

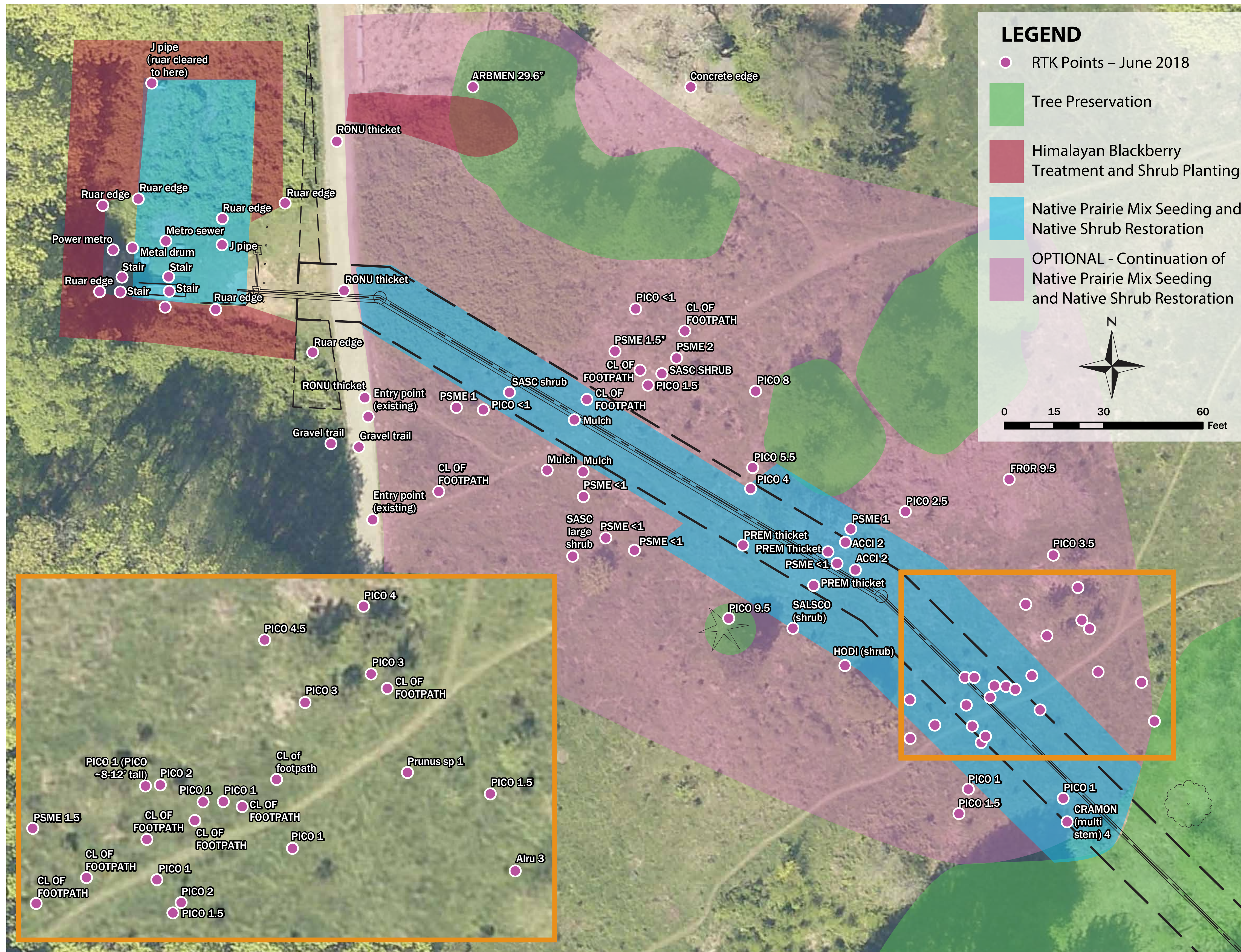


TREES RECOMMENDED FOR REMOVAL			
Tree ID Number	Tree Species	Common Name	DBH (Inches)
1	<i>Pinus contorta</i>	Lodgepole pine	4
2	<i>Prunus emarginata</i>	Bitter cherry	<1-5
3	<i>Prunus emarginata</i>	Bitter cherry	<1-6
4	<i>Pseudotsuga menziesii</i>	Douglas fir	<1
5	<i>Acer circinatum</i>	Vine maple	2
6	<i>Prunus emarginata</i>	Bitter cherry	<1-6
7	<i>Pinus contorta</i>	Lodgepole pine	1
8	<i>Pinus contorta</i>	Lodgepole pine	2
9	<i>Pinus contorta</i>	Lodgepole pine	1
10	<i>Pinus contorta</i>	Lodgepole pine	1
11	<i>Pinus contorta</i>	Lodgepole pine	1
12	<i>Pinus contorta</i>	Lodgepole pine	1
13	<i>Pinus contorta</i>	Lodgepole pine	2
14	<i>Pinus contorta</i>	Lodgepole pine	1.5
15	<i>Pinus contorta</i>	Lodgepole pine	1
16	<i>Crataegus monogyna</i>	Oneseed hawthorn	4
17	<i>Crataegus monogyna</i>	Oneseed hawthorn	<1-12
18	<i>Prunus emarginata</i>	Bitter cherry	<1-12
19	<i>Acer macrophyllum</i>	Bigleaf maple	10.5
20	<i>Alnus rubra</i>	Red alder	25
21	<i>Prunus emarginata</i>	Bitter cherry	<1-12
22	<i>Crataegus monogyna</i>	Oneseed hawthorn	10
23	<i>Alnus rubra</i>	Red alder	15
24	<i>Crataegus monogyna</i>	Oneseed hawthorn	13
25	<i>Alnus rubra</i>	Red alder	20
26	<i>Crataegus monogyna, Alnus rubra, Prunus emarginata</i>	Oneseed hawthorn, red alder, bitter cherry thicket	NA



West Point Treatment Plant

King County is working closely with Seattle Parks and Recreation on a restoration plan that blends into the natural environment and supports the park's wildlife. We are committed to replanting two trees for every tree removed.

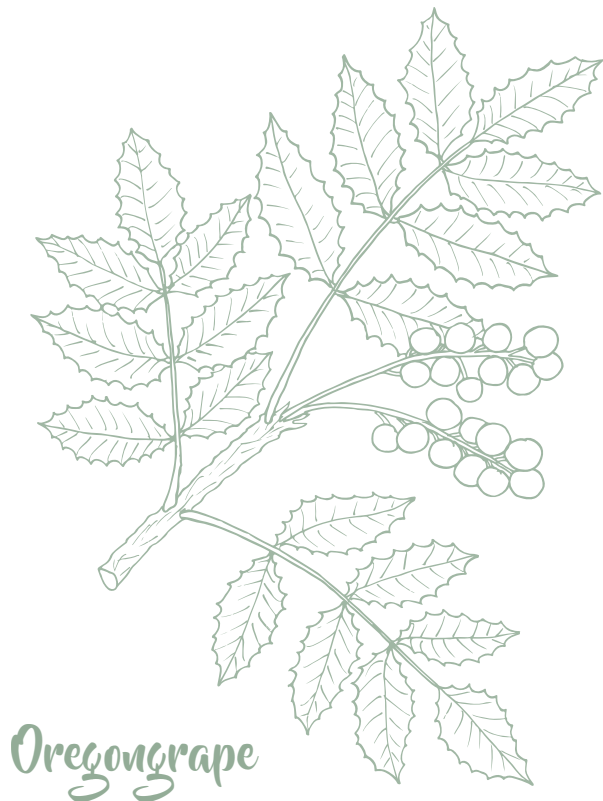




PLANT PALETTE

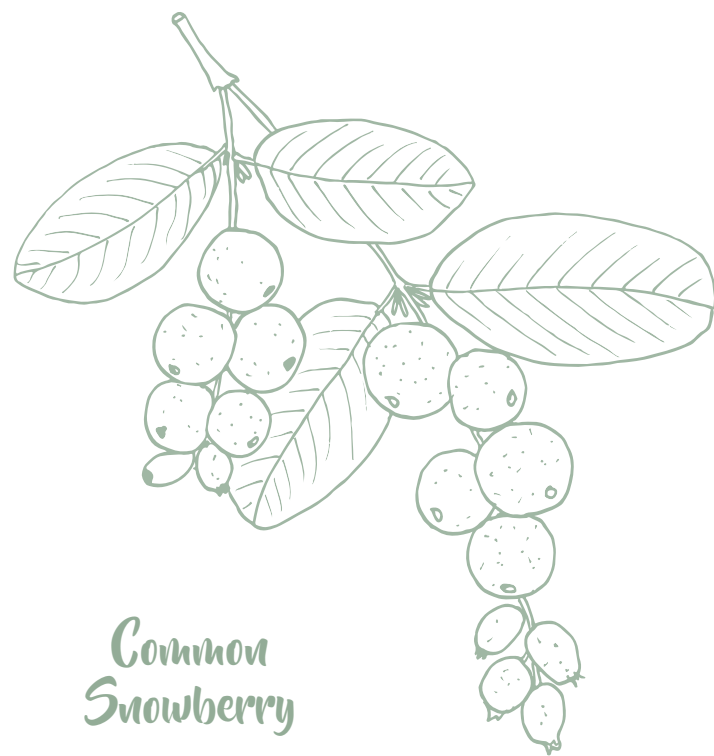


Recommended tree and plant palette for restoration plan, provided by Seattle Parks and Recreation.



RECOMMENDED TREE REPLACEMENT PALETTE		
Species Name	Common Name	Type
<i>Acer circinatum</i>	Vine Maple	Deciduous
<i>Acer macrophyllum</i>	Bigleaf Maple	Deciduous
<i>Alnus rubra</i>	Red Alder	Deciduous
<i>Pinus contorta</i>	Lodgepole Pine	Coniferous
<i>Pseudotsuga menziesii</i>	Douglas Fir	Coniferous
<i>Tsuga heterophylla</i>	Western Hemlock	Coniferous

TREES TO BE PROTECTED	
Species Name	Common Name
<i>Pinus contorta</i>	Lodgepole Pine
<i>Fraxinus Latifolia</i>	Oregon Ash
<i>Prunus Emarginata</i>	Bitter Cherry
<i>Acer macrophyllum</i>	Bigleaf Maple



PLANT PALETTE		
Botanic Name	Common Name	Type
<i>Acer circinatum</i>	Vine Maple	Shrubs
<i>Amelanchier alnifolia</i>	Serviceberry	Shrubs
<i>Berberis aquifolium</i>	Tall Oregon grape	Shrubs
<i>Berberis nervosa</i>	Dwarf Oregon grape	Shrubs
<i>Bromus vulgaris</i>	Columbia Brome	Graminoids
<i>Festuca occidentalis</i>	Western Fescue	Graminoids
<i>Fragaria vesca ssp bracteata</i>	Woods Strawberry	Forbs and Ferns
<i>Gaultheria shallon</i>	Salal	Shrubs
<i>Holodiscus discolor</i>	Oceanspray	Shrubs
<i>Melica subulata</i>	Alaska Oniongrass	Graminoids
<i>Penstemon ovatus</i>	Broad-leaved Penstemon	Forbs and Ferns
<i>Philadelphus lewisii</i>	Mockorange	Shrubs
<i>Polystichum munitum</i>	Sword Fern	Forbs and Ferns
<i>Rubus parviflorus var parviflorus</i>	Thimbleberry	Shrubs
<i>Symphoricarpos albus var laevigatus</i>	Common Snowberry	Shrubs

NATIVE SEEDING	
Botanic Name	Common Name
<i>Achillea Millefolium</i>	Yarrow
<i>Rosa Nutkana</i>	Nootka Rose
<i>Symphoricarpus albus</i>	Common Snowberry
<i>Elymus glaucus</i>	Blue Wildrye
<i>Balsamorhiza deltoidea</i>	Puget Balsamroot
<i>Agrostis exerata</i>	Spike Bentgrass
<i>Lupinus polyphyllus</i>	Big Leaf Lupine
<i>Rubus parviflorus</i>	Thimbleberry
<i>Solidago canadensis</i>	Canada Goldenrod





WHAT WILL THIS PROJECT LOOK LIKE ONCE FINISHED?

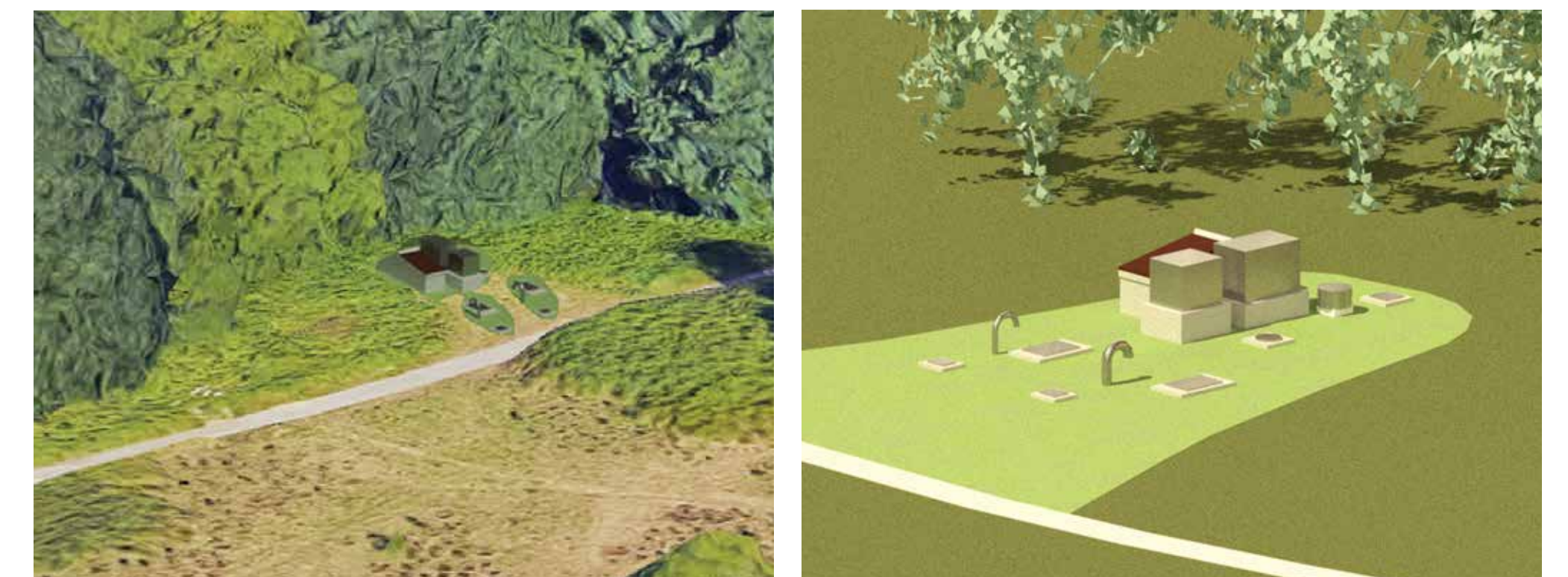
West Point Treatment Plant



Existing structure



New structure



Aerial views of new structure



Existing conditions pre-construction



Post-construction and planting



After planting establishment period