



King County

Department of Natural Resources and Parks
Wastewater Treatment Division

Sunset and Heathfield Pump Stations and Force Main Upgrade

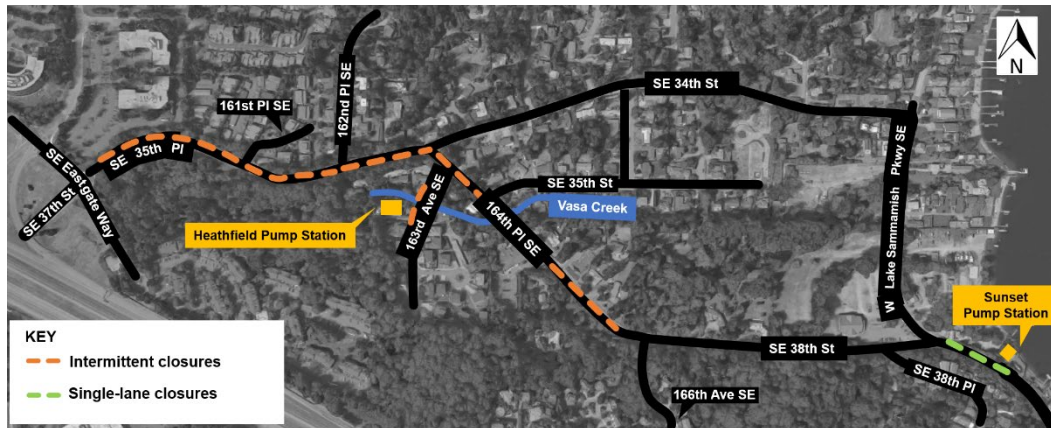
March 1, 2021

Construction Update: Single-lane closures this week and next

King County's contractor continues to work inside both pump stations and outside on landscape restoration.

Crews plan intermittent single-lane closures on SE 35th PI, 164th PI SE, and W Lake Sammamish Pkwy this **Tuesday and Wednesday, March 2 – 3** while they work on the fiber vaults. Crews also anticipate a single-lane closure on W Lake Sammamish Pkwy next week as they pave the driveway at the Sunset Pump Station.

This work is weather dependent. We will post the dates for next week's work and any changes to timing on the [project website](#) as they become available.



For more information:

- Visit www.kingcounty.gov/sunsetheathfield
- Call the project hotline at 206-296-7800
- Email Caryn Sengupta at caryn.sengupta@kingcounty.gov