



King County
Department of Natural Resources and Parks
Wastewater Treatment Division

Sunset and Heathfield Pump Stations and Force Main Upgrade

Construction Update: Road closure extended for re-installation of ornamental crosswalk on SE 38th PI



All work is weather dependent.

During this work, please continue to follow the detours on the maps below. Flaggers and signage will also help direct you through the area.

The closure of SE 38th PI for ornamental crosswalk re-installation will be extended through Sunday:

September 23 – 29: Full closure at SE 38th PI and West Lake Sammamish Parkway from 7:00 AM Monday, September 23 through 4:00 PM Sunday, September 29.

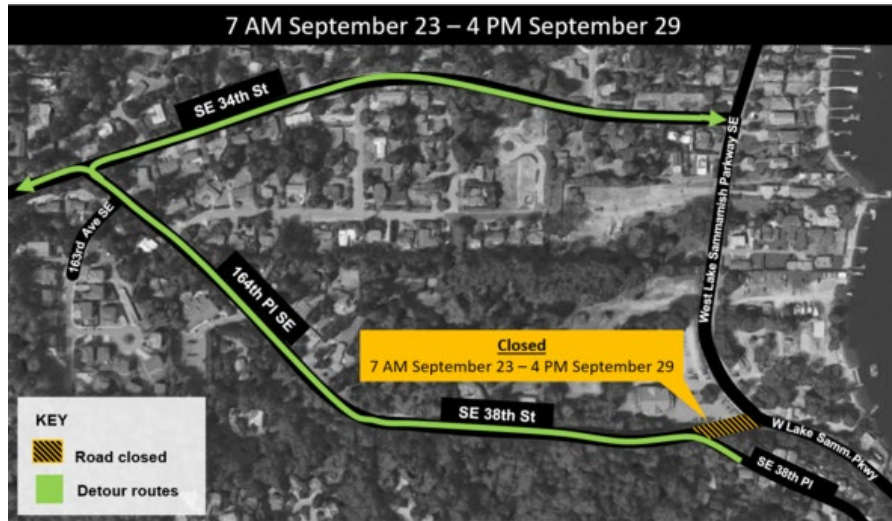
The closure of 164th PI SE at SE 35th PI will continue as planned:

September 30 – October 4: Full closure at 164th PI SE and SE 35th PI from 7:00 AM Monday, September 30 through 4:00 PM Friday, October 4th.

What to expect during crosswalk re-installation closures:

- **Access maintained** for residents, emergency services, waste pickup, mail delivery, and school buses.
- **Increased noise and vibrations** during the day from the concrete breaking process and jackhammers.
- **Work hours** from 7 a.m. to 7 p.m. weekdays and weekends.

Detour map for September 23 - September 29



Detour map for September 30 - October 4



Thank you for your patience while the contractor completes this restoration work.

For more information about ongoing road closures in the area, please visit the [project website](#).

The schedule and duration for construction is tentative and is subject to change as work progresses. We will continue to provide email notices with updates on timing of specific construction activities.

For more information:

- Visit www.kingcounty.gov/sunsetheathfield
- Call the project hotline at 206-296-7800
- Email Caryn Sengupta at caryn.sengupta@kingcounty.gov