

Construction Update: Road closures for ornamental crosswalk re-installation; single lane closures continue



All work is weather dependent.

Ongoing single-lane closures on SE 35th PI and 164th PI SE

The contractor is continuing restoration with single-lane closures on SE 35th PI and 164th PI SE. Crews plan to stripe both roads the week of September 30, which will require single-lane closures.

For more information about ongoing road closures in the area, please visit the [project website](#).

Closures for ornamental crosswalk re-installation

Over the next two weeks, King County's contractor is re-installing the ornamental crosswalks at the intersection of SE 35th PI and 164th PI SE, and at the intersection of SE 38th St and West Lake Sammamish Parkway.

During this work, please follow the detours on the maps below. Flaggers and signage will also help direct you through the area.

September 23 – 27: Full closure at SE 38th PI and West Lake Sammamish Parkway from 7:00 AM Monday, September 23 through 4:00 PM Friday, September 27.

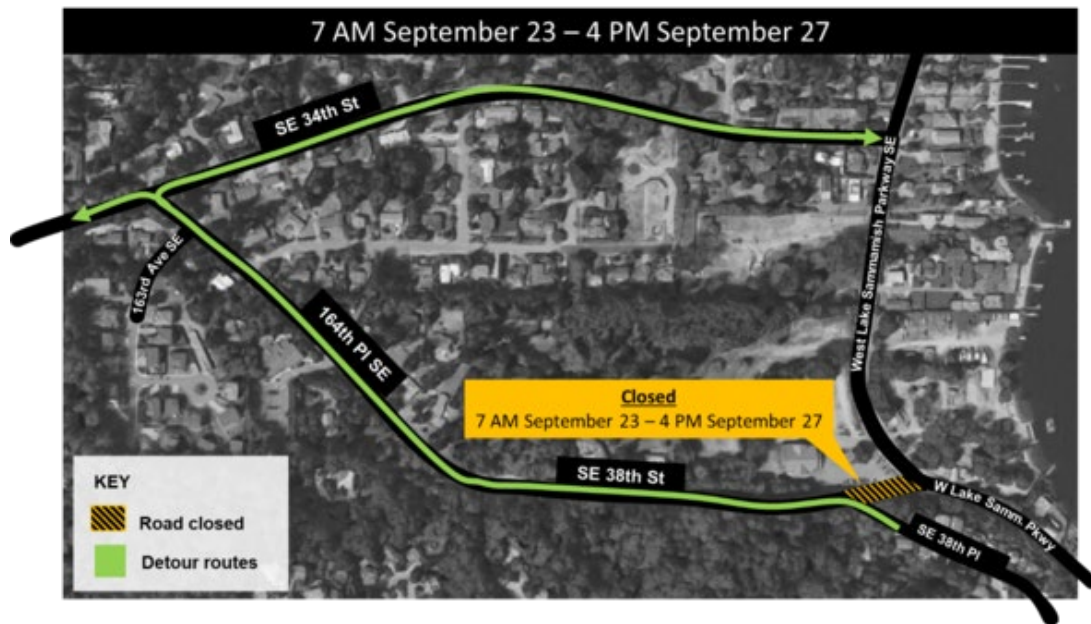
September 30 – October 4: Full closure at 164th PI SE and SE 35th PI from 7:00 AM Monday, September 30 through 4:00 PM Friday, Oct. 4th.

What to expect during crosswalk re-installation closures:

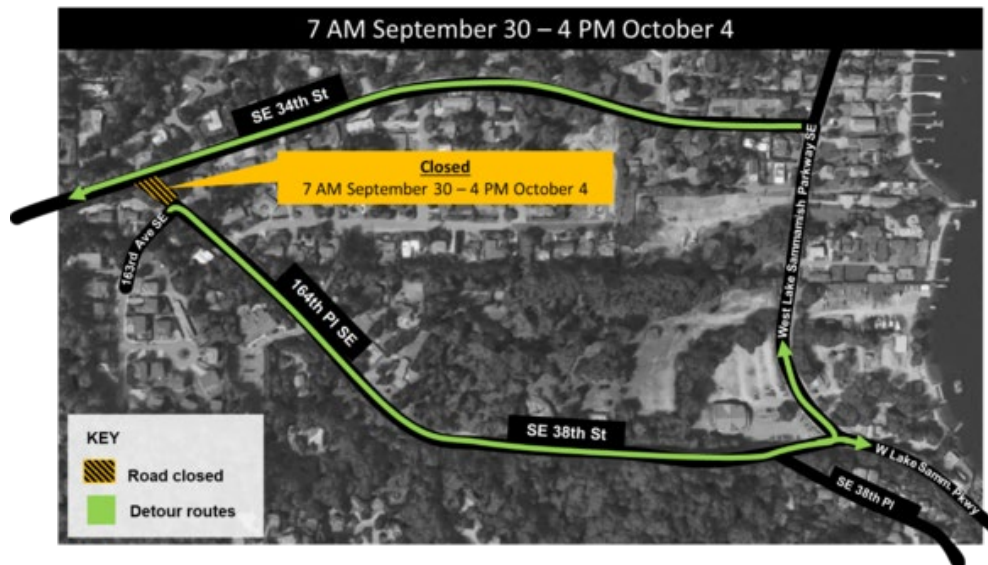
- **Access maintained:** for residents, emergency services, waste pickup, mail delivery, and school buses.
- **Increased noise and vibrations:** You may experience increased noise and vibrations during the day from the concrete breaking process and jackhammers.

- **Work hours:** 7 a.m. to 7 p.m. weekdays and weekends.

Detour map for September 23 - September 27



Detour map for September 30 - October 4



Thank you for your patience while the contractor completes this restoration work.

For more information about ongoing road closures in the area, please visit the [project website](#).

The schedule and duration for construction is tentative and is subject to change as work progresses. We will continue to provide email notices with updates on timing of specific construction activities.

For more information:

- Visit www.kingcounty.gov/sunsetheathfield
- Call the project hotline at 206-296-7800
- Email Caryn Sengupta at caryn.sengupta@kingcounty.gov