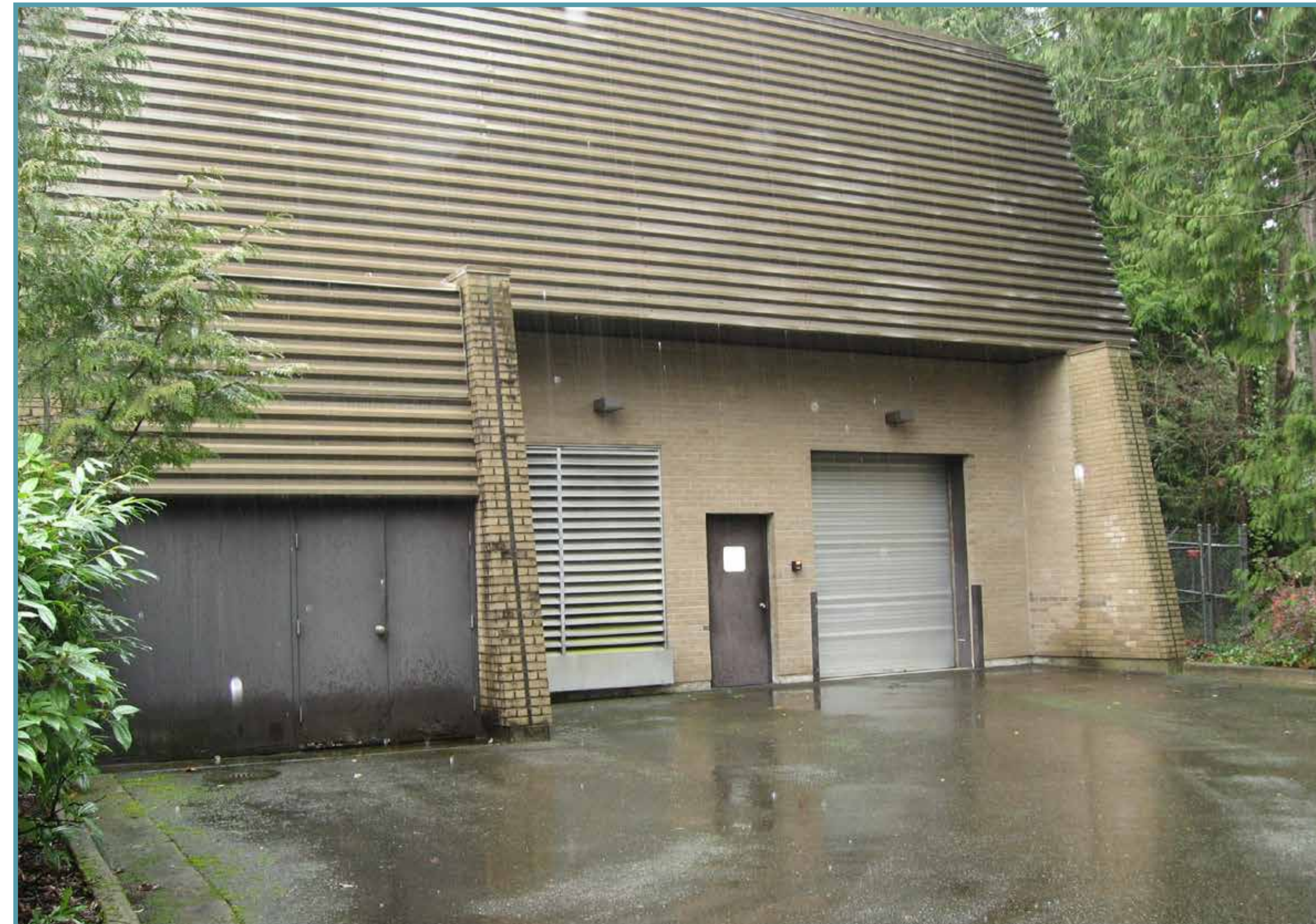


Heathfield Pump Station Construction

Though most construction work will be completed in and around the station, off the main road, you can generally expect the following construction impacts:



- Periodic single lane closures on 163rd Avenue Southeast
- Increased truck traffic with delivery of equipment and materials
- Noise and dust from equipment, drilling, and hammering
- Typical work hours from 7 a.m. – 6 p.m. Monday through Friday, with occasional exceptions
- Weekend work may occasionally occur between the hours of 9 a.m. to 6 p.m.