



**King County**

Department of Natural Resources and Parks  
Wastewater Treatment Division

# Sunset and Heathfield Pump Stations and Force Main Upgrade

## Neighborhood briefing on Sunset Pump Station roof design

November 5, 2014 6:30-7:30 p.m.

Vasa Park Ballroom

3560 West Lake Sammamish Pkwy SE

### Meeting purpose:

- Share project information on Sunset and Heathfield Pump Stations and Force Main Upgrade including project description, project need, timeline, and current design status
- Share proposed changes to the Sunset Pump Station roof
- Help neighbors understand and visualize those changes
- Hear community perspectives, concerns, and questions

### Agenda:

- 6:30 – 7:00     Introductions, general project information, and proposed roof design
- 7:00 – 7:30     Opportunity for questions, comments, and input

Alternative Formats Available for All Materials in Packet  
206-477-5371 or 711 TTY Relay



**King County**

Department of Natural Resources and Parks  
Wastewater Treatment Division

# Sunset and Heathfield Pump Stations and Conveyance Upgrade

February 2014

## King County is Upgrading the Sunset and Heathfield Pump Stations and Conveyance

Your community is home to the Sunset and Heathfield pump stations. King County is planning for an upgrade of these undersized facilities and the associated sewer force main pipe to accommodate the area's growing population and ensure reliable operations.

### Project Overview

To protect public health and the environment, King County will update the undersized Sunset and Heathfield Pump Stations and associated sewer force main in Bellevue. This system conveys wastewater flows from Sammamish, Issaquah and Bellevue to the South Treatment Plant in Renton.

The pump stations are approaching their capacity. Population growth upstream has increased the use of the large pumps, affecting overall reliability, performance and efficiency of the system. Originally constructed in 1965 (with upgrades in 1987), the pump stations have a system capacity of 18 million gallons per day (mgd). The upgraded system will convey a peak flow of 30 mgd.

### For more information

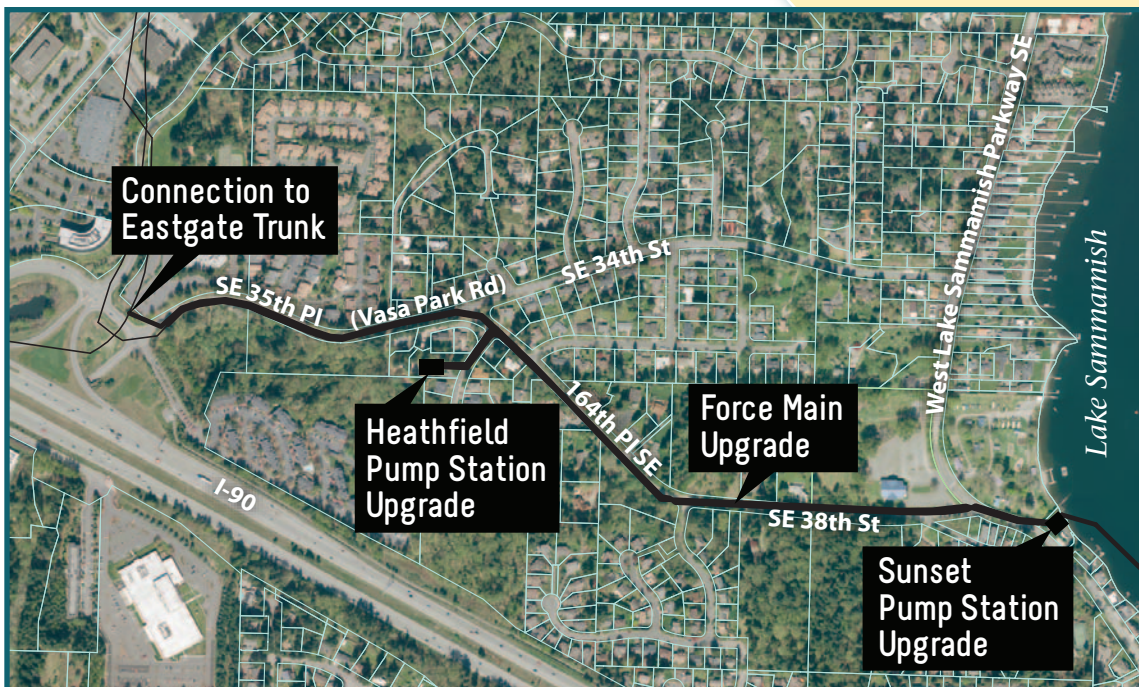
#### Project Website

[www.kingcounty/sunsetheathfield](http://www.kingcounty/sunsetheathfield)

#### Contact Kristine Cramer

206-477-5415

[kristine.cramer@kingcounty.gov](mailto:kristine.cramer@kingcounty.gov)



### Did you know?

King County's Wastewater Treatment Division serves about 1.5 million residents and provides wastewater conveyance and treatment services for 17 sewer districts and 17 cities.

# The Sunset and Heathfield Pump Stations Upgrade Project

This project will result in upgraded pump stations and a new sewer force main that will provide greater capacity for the increasing volumes of wastewater, better odor control, as well as greater confidence in its long-term soundness.



**Heathfield Pump Station**, 3541 163rd Ave. S.E., Bellevue

**Sunset Pump Station**, 3730 W. Lake Sammamish Pkwy. S.E., Bellevue



## Project Schedule



## Getting the Project Started

In order to best serve the growing needs of the area, King County evaluated several new pump station configurations to optimize the use of the existing sites and conveyance pipeline corridors. The configurations were evaluated based on lifecycle costs, reliability, operations and maintenance needs, environmental impacts, efficiency and community

impacts. The project team determined the need for four pumps, and associated equipment at each new station, with a larger sewer force main.

Recently, the project team has been out in the neighborhood gathering information on existing utilities and environmental conditions.

## What's Next?

Over the next year, the project team will continue gathering site information and start design of the pump stations and conveyance upgrades.

The team is considering facility designs that, to the extent possible, stay within the existing building footprints and designs that do not affect views and minimize traffic congestion.

## How King County Works with the Community

King County will work closely with the nearby community and the City of Bellevue to identify and address community issues and concerns. The County will notify the community in advance of major project milestones, community meetings and construction work (not expected to start until 2016). Project information will also be available on the project Web site or you may join the project email list.

In the coming weeks, King County will be visiting neighbors of the pump station to discuss the project.

## Take our survey!

The project team would like to confirm some of the values and priorities that we have already heard from the community; please take a moment to fill out the survey. In addition to the survey, we will be visiting neighbors of the pump stations to discuss the project.

**For more information, or to join the project email list, contact:**

Kristine Cramer, 206-477-5415  
kristine.cramer@kingcounty.gov

## Website information:

[www.kingcounty/sunsetheathfield](http://www.kingcounty/sunsetheathfield)



# Sunset and Heathfield Pump Stations and Force Main Upgrade

## Design Phase FAQs

Fall 2014

### **What is the Sunset and Heathfield Pump Stations and Force Main Upgrade project?**

King County will update the undersized Sunset and Heathfield pump stations and associated sewer force main in Bellevue to help protect public health and the environment. This system conveys wastewater flows from Sammamish, Issaquah and Bellevue to the South Treatment Plant in Renton.

### **Why is this project necessary?**

Population growth has increased the use of current equipment and the pump stations are approaching their capacity, affecting overall reliability and performance of the system. This project will result in four upgraded pumps and a new larger sewer force main that will provide greater capacity for the increasing volumes of wastewater. Better odor control and greater confidence in the system's long-term soundness are additional benefits for the community.

### **What is the current project schedule?**

The project will reach the "30% design" mark in the first quarter of 2015. This means the basic design for the pump stations and the force main will be complete, including the type and location of pump station equipment and the general underground route for the force main. As the project team works through the design, there will be opportunities for the community to learn and provide input about the design elements and understand how the neighborhood will be affected by the project. Construction is expected to begin in 2017 for approximately three years.

### **What factors does the project team consider during the design process?**

The design process includes factors such as technical lifecycle costs, reliability, permitting, operations and maintenance needs, environmental impacts, efficiency, and community considerations.

### **Will the community have opportunities to provide input on the design?**

While most project design decisions are technical in nature, members of the public are welcome to share comments, suggestions, or concerns throughout the process. These factors may include types of trees and other visual features.

### **Will the project have an artwork component?**

New artwork near the pump station facilities is a possibility. However, a February 2014 community values survey indicated neighbors want the facilities to blend in to the current neighborhood look and feel. Based on this feedback, the project team is focused on designs that align with the neighborhood's current character. If an artwork feature is added, the community will be consulted on its features.

### **How will the project impact landscaping and Vasa Creek?**

Some trees may need to be removed along the force main alignment between the Sunset and Heathfield pump stations, as well as near the two pump stations. If trees need to be removed, King County will work with the community to ensure that tree replacements meet permitting requirements and the neighborhood's needs. The force main may pass underneath Vasa Creek, but the creek should not be impacted by the work.

### **How will Vasa Park be impacted?**

Access to and from Vasa Park will be maintained, although nearby construction noise and closures are expected to occur. King County will work closely with Vasa Park regarding all potential impacts.

Sunset and Heathfield Pump Stations and Force Main Upgrade  
Proposed updates to Sunset Pump Station roof - DRAFT



King County

Department of Natural Resources and Parks  
Wastewater Treatment Division

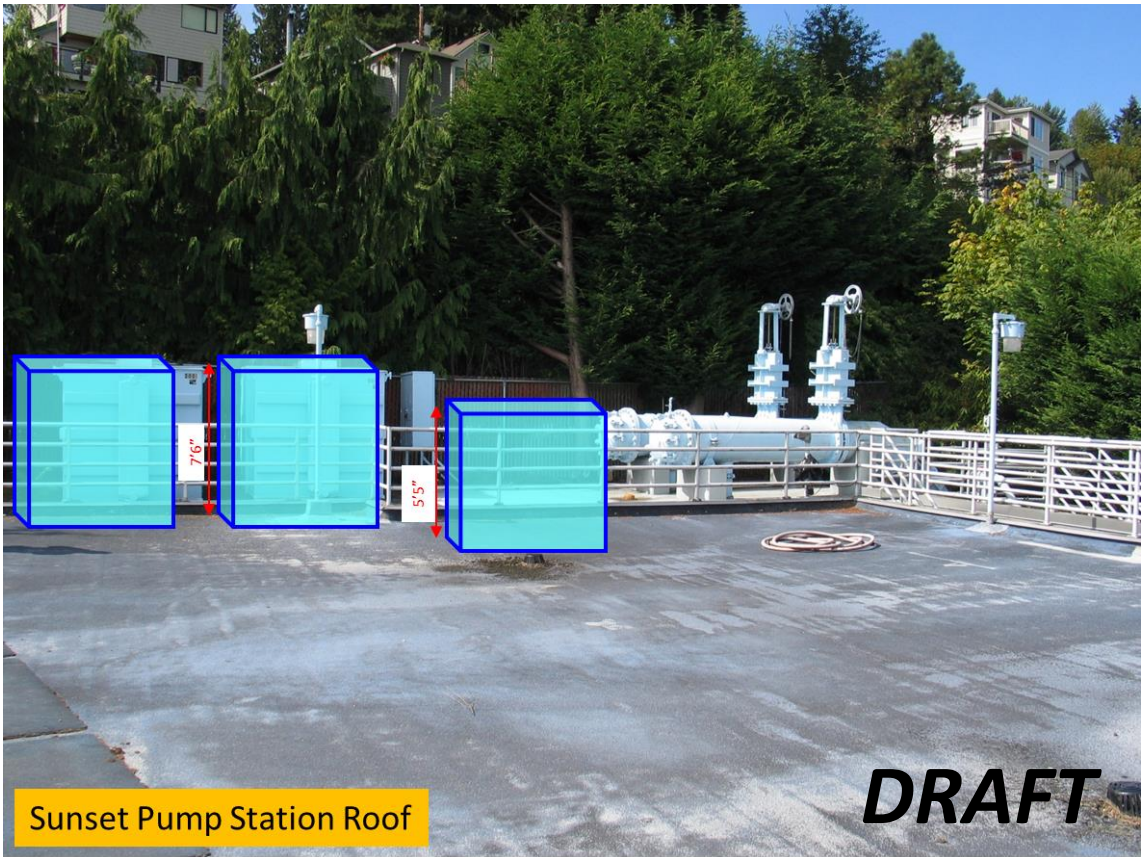
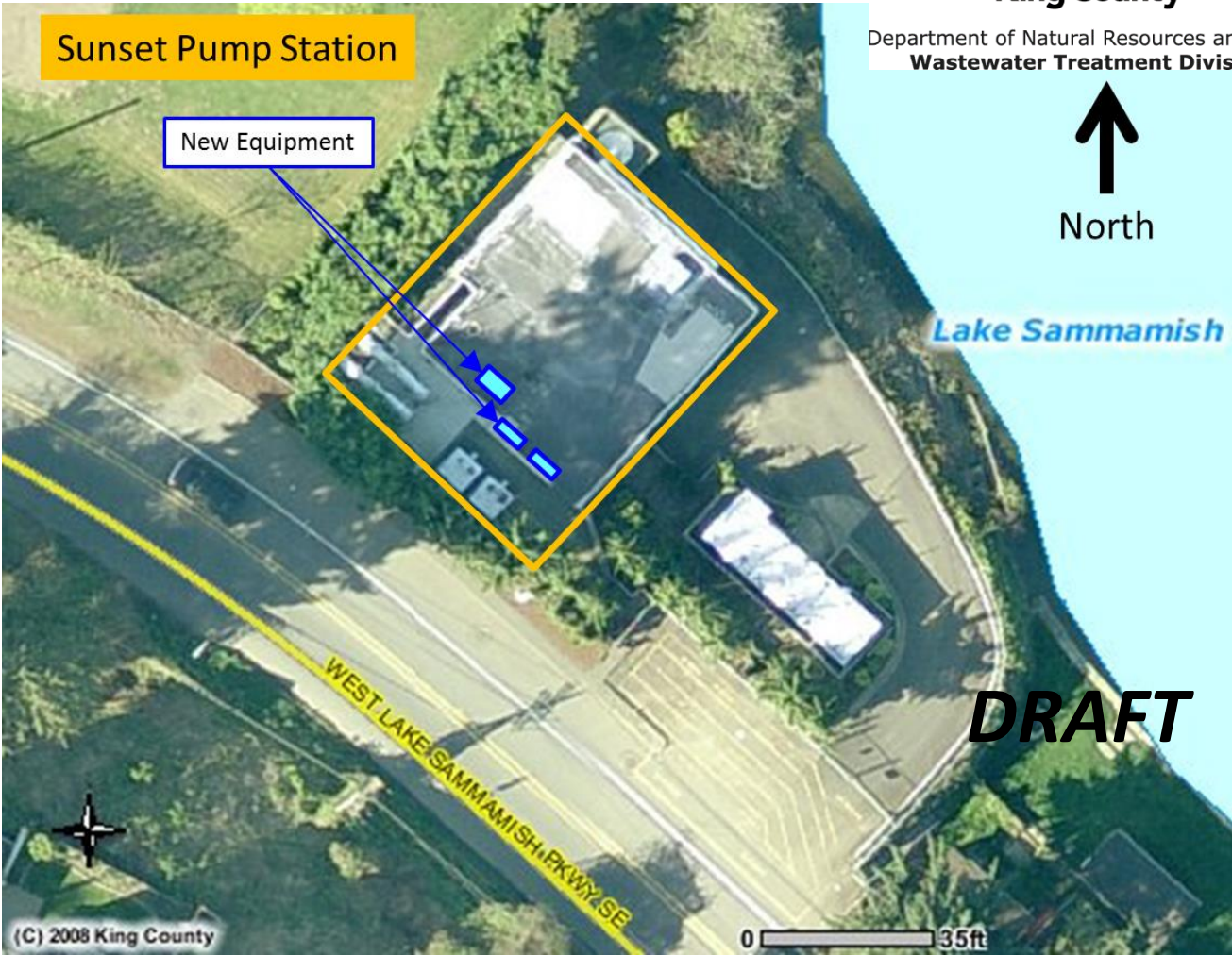


North

Lake Sammamish

Sunset Pump Station

New Equipment



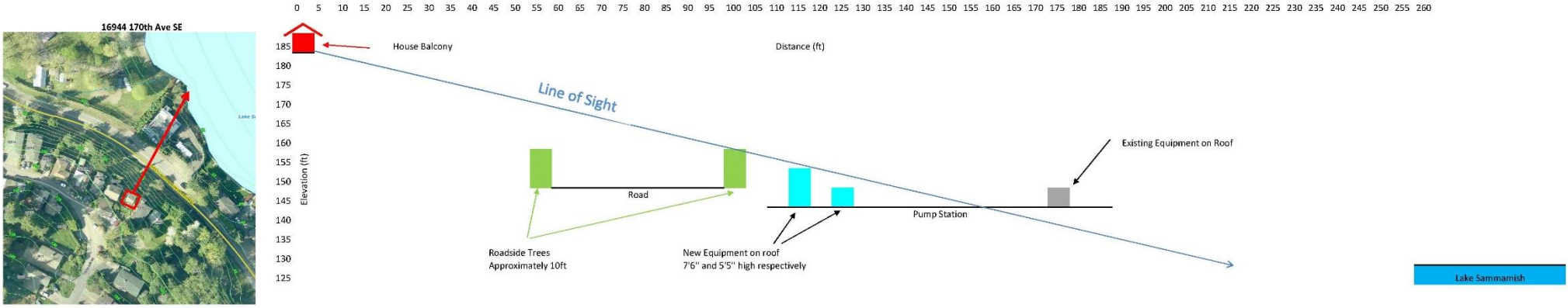
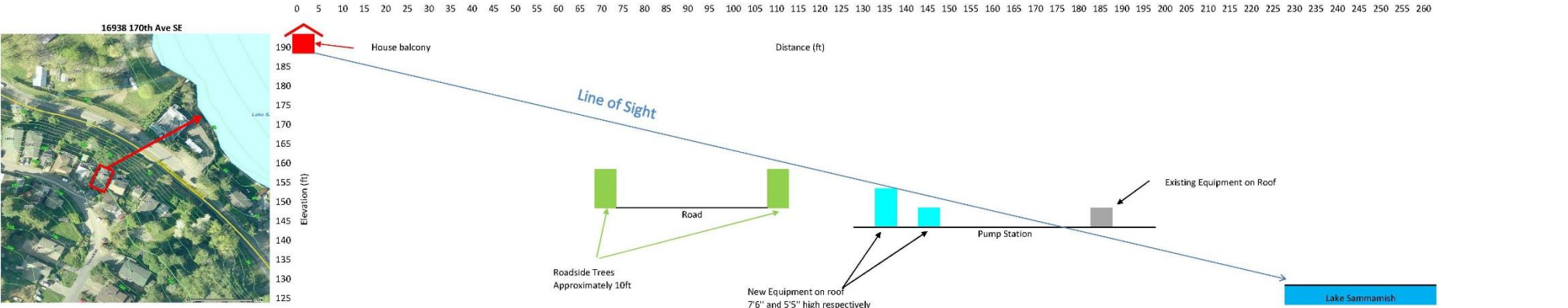
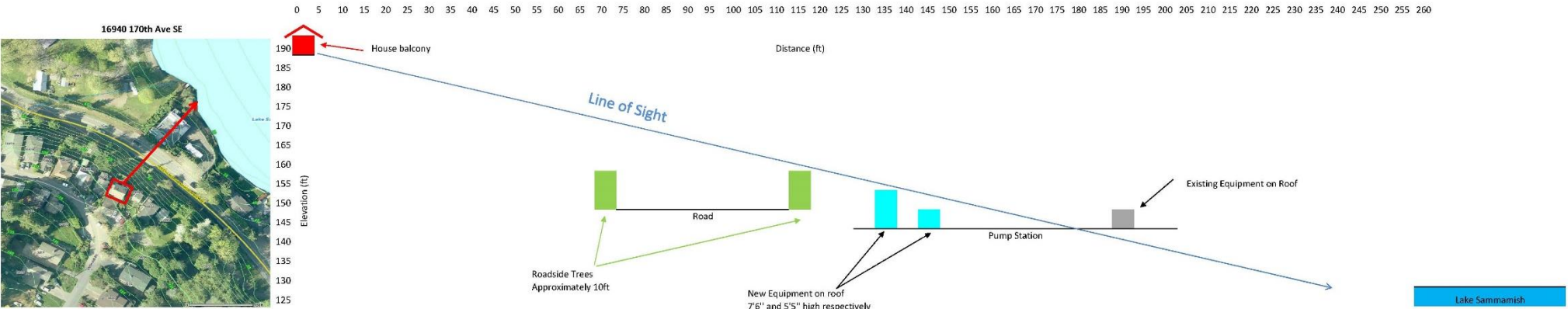
Sunset Pump Station Roof



Sunset and Heathfield Pump Stations and Force Main Upgrade  
Sunset Pump Station roof sightlines



Department of Natural Resources and Parks  
Wastewater Treatment Division

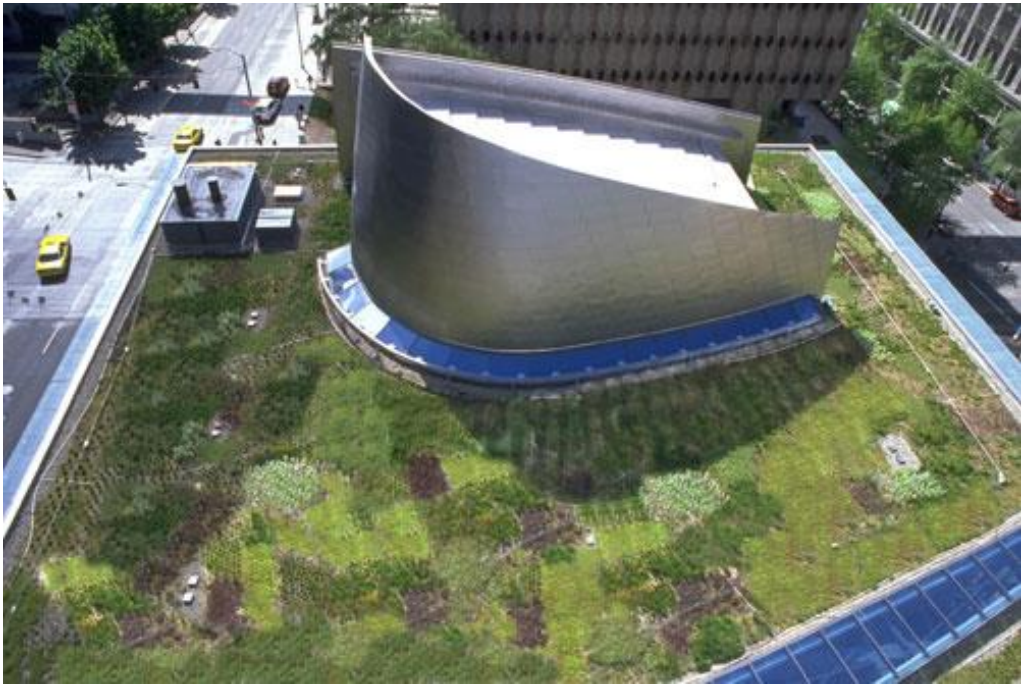


**Sunset and Heathfield Pump Stations and Force Main Upgrade**  
*Examples of green roofs*



**King County**

Department of Natural Resources and Parks  
**Wastewater Treatment Division**



*Seattle City Hall*



*Ballard Public Library*



*EPA Region 10 Headquarters, Seattle*