



King County

Department of Natural Resources and Parks
Wastewater Treatment Division

Sunset and Heathfield Pump Stations

Upgrade Project

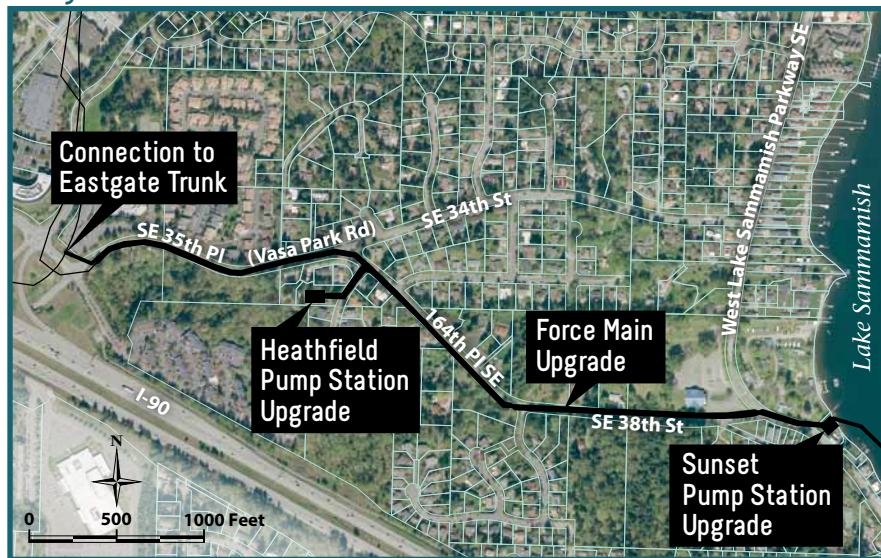
King County's Wastewater Treatment Division protects public health and the environment by conveying and treating the region's wastewater.

Your community is home to the Sunset and Heathfield pump stations. The County must upgrade these outdated facilities and install a sewer force main to accommodate the area's growing population and ensure reliable operations.

Construction will begin in 2016 and we are beginning design now. You may start to see us in your neighborhood gathering information to help inform the design.

We'll be in touch soon with more information on the design process - please stay tuned!

Project Area





**Department of
Natural Resources and Parks**
Wastewater Treatment Division
201 S. Jackson Street, MS: KSC-NR-0505
Seattle, WA 98104-3855

Sunset and Heathfield Pump Stations

Upgrade Project

**Upgrades coming to the Sunset and Heathfield
wastewater facilities near you!**

To learn more, visit

www.kingcounty.gov and search

“Sunset Heathfield”

or contact Heidi Sowell

206-477-5548 or heidi.sowell@kingcounty.gov

Translation and Alternative Formats Available

206-477-5371 TTY Relay: 711

Printed on recycled paper. Please recycle.



1311_3611w_sunsetHEATHpcard.ai wgab

PRESORTED
STANDARD
U.S. POSTAGE
PAID
SEATTLE, WA
PERMIT NO. 836