



Eastside Interceptor lining In Renton

Completed Spring 2020

Project updates

The repaired pipeline became operational in November 2019. Restoration and final project completion are expected in the Spring of 2020. View [final project update](#) (March 4, 2020).

Project description

The Eastside Interceptor (ESI) is a regional sewer line that carries wastewater from eastside homes and businesses to King County's [South Treatment Plant in Renton](#). This project repaired approximately 3,700 feet of the line by installing a liner on the walls of the pipe.

The project followed Logan Avenue North, from around the intersection of Garden Avenue (The Landing Shopping Center) on the north end, to near North 6th Street between Logan and Burnett Avenue North at the south end of the project. View [project area map](#).

Project schedule

Work began in the spring of 2019 and the pipeline became operational in November 2019. Project restoration should be complete in the Spring of 2020.

Why did we need this project?

The Eastside Interceptor is one of the main sewer lines that bring untreated wastewater to the treatment plant in Renton. This line starts near Kirkland and runs south on the east side of Lake Washington. It is eight feet in diameter by the time it gets to the project area. The pipe is aging and was reaching the end of its service life. It is over 50 years old and corrosion was found in parts of the pipe. The pipe needed to be repaired so it does not fail, overflow or disrupt service.

What are the benefits?

This project will allow the pipe to stay to be used for at least 50 additional years. The pipe lining approach reduced the surface impacts compared to replacing the line.

Planning Design Construction **Operations**

24-hour emergency and odor reporting:

Contact South Treatment Plant at ☎ 206-263-1760.

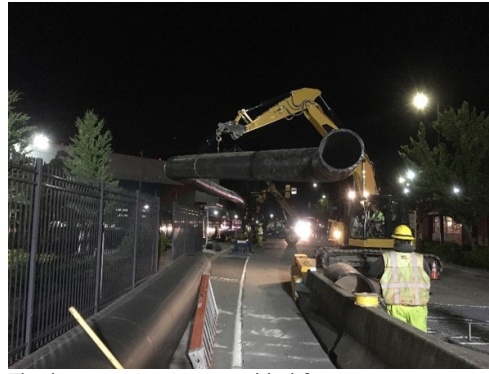
Project location



[Project area map](#)



The excavated intake pit allows crews to prepare for diverting water from the pipe in preparation for pipe lining.



The bypass pipe is assembled from separate pieces and lowered into place using a crane.



The bypass pipe is installed along a road. A concrete border and cones are used to guide traffic while work is underway.



Odor control and ventilation along the pipe length ensure the conditions in the pipe are safe for crews to work inside.



The pipe interior after it has been lined with the protective material.

How King County Wastewater e...



Learn how King County repairs and protects pipes from degradation using a technique called "lining." See the above- and below-ground processes used to apply an adhesive liner to the sewer pipe's interior and to keep crews working inside the safe.

Visit [Software Help](#) if you have trouble viewing or downloading documents.

Library

Project updates



- [Project update](#), March 4, 2020
- [Project Update for the week of Dec 23, 2019 - Jan. 8, 2020](#), December 23
- [Project Update for the week of Dec 6-19](#), December 6
- [Project Update for the week of Nov. 21 - Dec 4](#), November 21
- [Project Update for the week of Nov. 14-20](#), November 14
- [Project Update for the week of Nov. 7-13](#), November 6
- [Project Update for the week of Oct. 31 - Nov. 6](#), October 31
- [Project Update for the week of Oct. 25-31](#), October 25

- [Project Update for the week of Oct. 16-23, October 16](#)
- [Project Update for the week of Sept. 26-Oct. 2, September 26](#)
- [Project update for the week of Sept 19-25, September 19](#)
- [Project update for the week of Sept 12-18, September 12](#)
- [Project update for the week of September 5-11, September 5](#)
- [Project update for the week of August 29 - September 4, August 29](#)
- [Project update for the week of August 22-28, August 22](#)
- [Project update for the week of August 15-21, August 15](#)
- [Project update for the week of August 8-14, August 8](#)
- [Project update for the week of August 1-7, August 1](#)
- [Project update for the week of July 25-31, July 25](#)
- [Project update for the week of July 18-24, July 18](#)
- [Project update for the week of July 11-17, July 11](#)
- [Project update for the week of July 5-11, July 5](#)
- [Project update for the week of June 27-July 3, June 27, 2019](#)
- [Project update for the week of June 20-27, June 20, 2019](#)
- [Project update for the week of June 14-20, June 14, 2019](#)
- [Project update for the week of June 7-13, June 7, 2019](#)
- [Project update for the week of May 31-June 5, May 30, 2019](#)
- [Project update for the week of May 23-29, May 23, 2019](#)
- [Project update for the week of May 16-22, May 16, 2019](#)
- [Project update for the week of May 9-15, May 9, 2019](#)
- [Project update for the week of May 2-8, May 2, 2019](#)
- [Work begins on King County's Eastside Interceptor Lining Project, April 24, 2019](#)

Newsletter and project area map



[Sewer line work begins this spring!](#) Spring 2019

[Project area map](#)

Wastewater Treatment Division

King Street Center
201 S. Jackson St., Suite 500
Seattle, WA 98104

[Get directions](#)

Contact us

206-477-5371

[WTD Division Directory](#)

website.wtd@kingcounty.gov



Last Updated November 23, 2020