



About the North Beach CSO Control Project

King County is installing a new combined sewer overflow (CSO) control facility, which will store excess wastewater and stormwater flows during large storms, reducing untreated discharges from the North Beach Pump Station. The County is building a concrete storage facility under Triton Drive NW and NW Blue Ridge Drive and a new above ground equipment building adjacent to the County's existing North Beach Pump Station.

For more information

Call the project hotline to join the project email list.

24-Hour Project Hotline: 206-296-7372

Project Website: www.kingcounty.gov/environment/wtd/Construction/Seattle/NBeachCSOStorage

Use the project feedback form, linked in the lower right side of the homepage, under "For more information"

Project Contact: Monica Van der Vieren

Email: monica.vandervieren@kingcounty.gov

Alternative Formats Available

206-477-5371 TTY Relay: 711



Printed on recycled paper. Please recycle.

1411_4503_NorthBeachNEWS.indd skrau 12/20/14



What progress have we made?

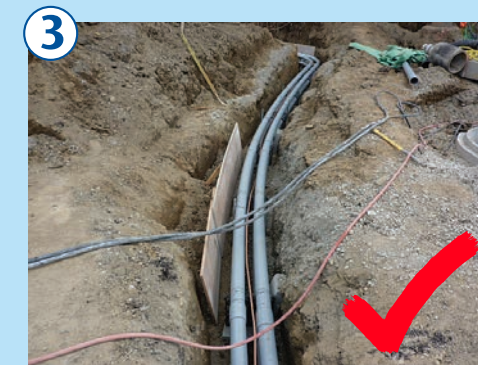
Here is the progress we have made in 2014 to build this critical facility.



1 Prepare for construction. The contractor acquired the necessary permits and finalized the construction sequencing schedule before construction began.



2 Intersection closure. In order to work in the street, the contractor had to close the intersection of NW Blue Ridge Drive and NW Triton Drive. This required installing a Metro bus turn-around, receiving traffic control plan approval, and setting up the construction site in the street.



3 Utility and sewer bypass systems. Several utility lines were moved because they were located where the storage tank will go. Some of these lines were in different locations than were shown in drawings and required extra time to relocate. The contractor also encountered a previously undocumented underground power line that needed to be moved before shoring began.



4 Storage tank shoring and excavation. Malcolm Drilling, Inc. installed shoring panels in September to stabilize the surrounding soils so that excavation for the storage tank could begin. This work required large equipment, including tall batch plants used to mix grout for the shoring method, drill rigs, and cranes. Excavation of the storage tank will be completed in December 2014.



Mechanical and electrical building shoring and excavation. This new building is being constructed on the North Beach Pump Station site to house odor control and electrical equipment. The contractor installed shoring and excavated the area for the new building.

Shoring equipment used to install "soil mix walls." This method produces less noise and vibration compared to other shoring techniques.



23

untreated discharges of stormwater and sewage at North Beach by the end of October 2014



At North Beach, combined sewer overflows (CSOs) can be discharged from both an outfall extending into Puget Sound and a secondary outfall on the beach. The beach and nearshore are enjoyed by residents, boaters, and visitors traveling from Golden Gardens and Carkeek Parks. During this year, the waters around the North Beach outfalls were considered unsafe for public exposure for 46 days, about a month and a half total.

King County appreciates your patience as we continue building this project. We know that construction in residential areas causes inconveniences to neighbors. In North Beach, where project neighbors are experiencing construction activities up to six days a week, it is understandable that people may sometimes lose sight of the need for this mandated project.



CSO outfall 48A is at top. CSO outfall 48 is at bottom.

What are we doing to reduce impacts to neighbors?

We understand that work in the street and near homes is challenging for neighbors. We work to reduce impacts to neighbors throughout construction, identifying reasonable solutions to concerns where feasible. Here are some examples from North Beach:

- The contractor used a shoring method that reduced the width of the excavation, moving it farther from houses. Soil mix wall shoring is quieter to install than other conventional methods. This method met the County's stringent requirements to limit vibration. The County received no vibration complaints from shoring, a unique experience compared to other sewer construction projects we've built near homes and businesses.
- By installing an underground gravity sewer bypass, the contractor avoided the need to run generators 24 hours a day during tank construction. Even quiet generators can seem loud at night to people living nearby.
- The sealed shoring system selected by the contractor minimized the use of dewatering pumps to remove water from the excavation to daytime hours. This has avoided generator noise at night. The pumps are now connected to temporary power, so they can be run around the clock, saving time to get water out of the excavation when crews start in the morning.
- To reduce annoyance from backup alarms, Stellar J has replaced their "pure tone" alarms with broadband alarms. King County is continuing to add signage as needed to limit driving and parking problems around residences.
- We are continuing to answer calls on the 24/7 construction hotline, and to provide email and phone call updates to residents living near the project area.

What's next?

Here's a look at what's ahead for the project.

- **Temporary intersection opening.** The intersection of N.W. Blue Ridge Drive and Triton Drive N.W. will temporarily reopen. The road will be open for about one month, beginning at the end of February 2015. The Metro bus will remain on a detour route during this time.
- **Completing storage tank construction.** The contractor will complete forming and concrete pours for the storage facility.
- **Building the drain vault and flushing vault.** The drain vault will be built on King County property and outfitted with a pump system. The flushing vault will be built at the intersection of N.W. Blue Ridge Drive and N.W. 100th Street. This vault will contain "tipping buckets" that fill with clean water and then empty into the storage tank to clean it out after use.
- **Constructing the new above ground mechanical and electrical building.** The contractor will continue to construct the new above ground mechanical and electrical building, located on the North Beach Pump Station. Once the above ground structure is built, the contractor can begin installing equipment.
- **Restoring the area and permanently reopening the intersection.** The intersection will close again to complete the final sewer connections, restore utilities that were temporarily moved, and restore the roadway, including affected landscaping. After final restoration, the road will be permanently reopened.
- **Restoring the North Beach Pump Station site and temporary easement areas.** Final landscaping, painting of above ground features, fencing, and restoration of easement areas will be carried out.



The contractor began digging a trench and forming the structure of the tank in early November.



Updated artist's rendering of completed project

Questions? Concerns?

**Call our 24-hour hotline:
206-296-7372**

Leave a message, and a project team member will return your call.

Holiday schedule

The contractor will not be working Thursday, December 25, and Thursday, January 1. We will send an email reminder closer to these days.