

# North Beach CSO Control Project

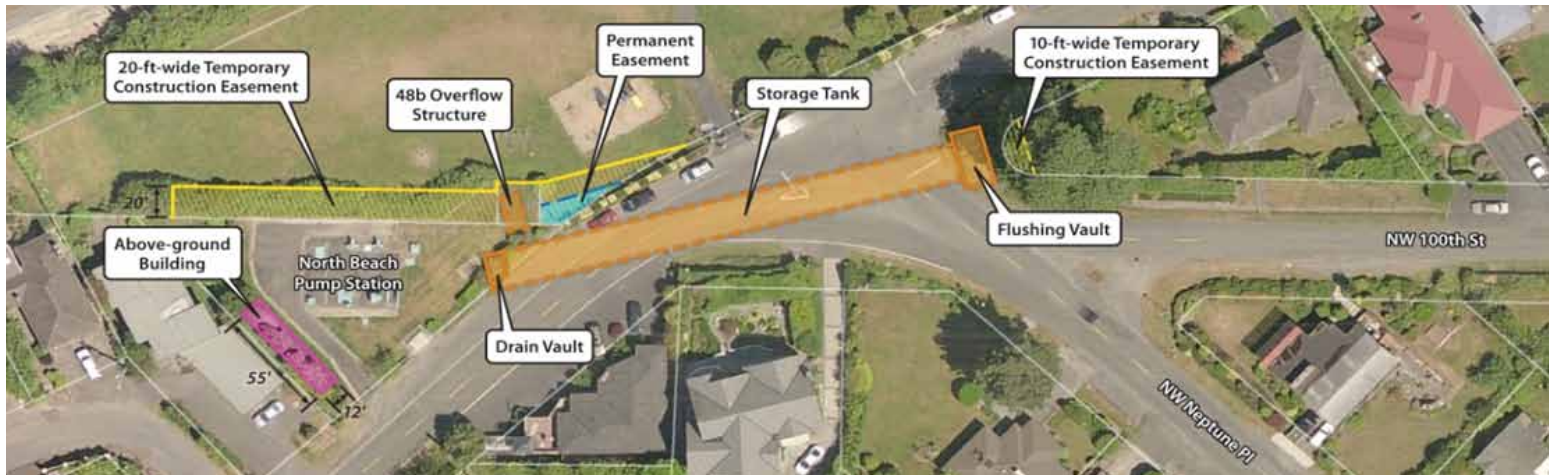


**King County**

Department of  
Natural Resources and Parks  
**Wastewater Treatment  
Division**

PROJECT NEWSLETTER • SUMMER 2013

## Construction is coming!



King County's North Beach combined sewer overflow (CSO) Control Project is preparing for the start of construction! By late Fall 2013, we expect to award the contract to build the North Beach CSO Control Facility, an underground storage tank and associated equipment facility. This addition to King County's North Beach wastewater service system will help to reduce discharges of untreated wastewater and stormwater to Puget Sound during large storms.

### *What's next?*

King County will be awarding the construction contract to a general contractor in late 2013. We know we'll need to help project neighbors and the community get prepared for construction. We'll be updating the project Web, sending out a newsletter, and hosting a pre-construction community meeting. At the meeting, people will be able to meet the contractor and we'll be sharing more details about upcoming construction, including:

- Construction schedule and activities
- Bus stop relocation and route changes
- How we will maintain access and services to homes and Blue Ridge Park
- Construction haul routes
- 24-hour hotline and construction contact information

The entire project is required to be completed by the end of 2015. Work in the street is expected to take up to one year.

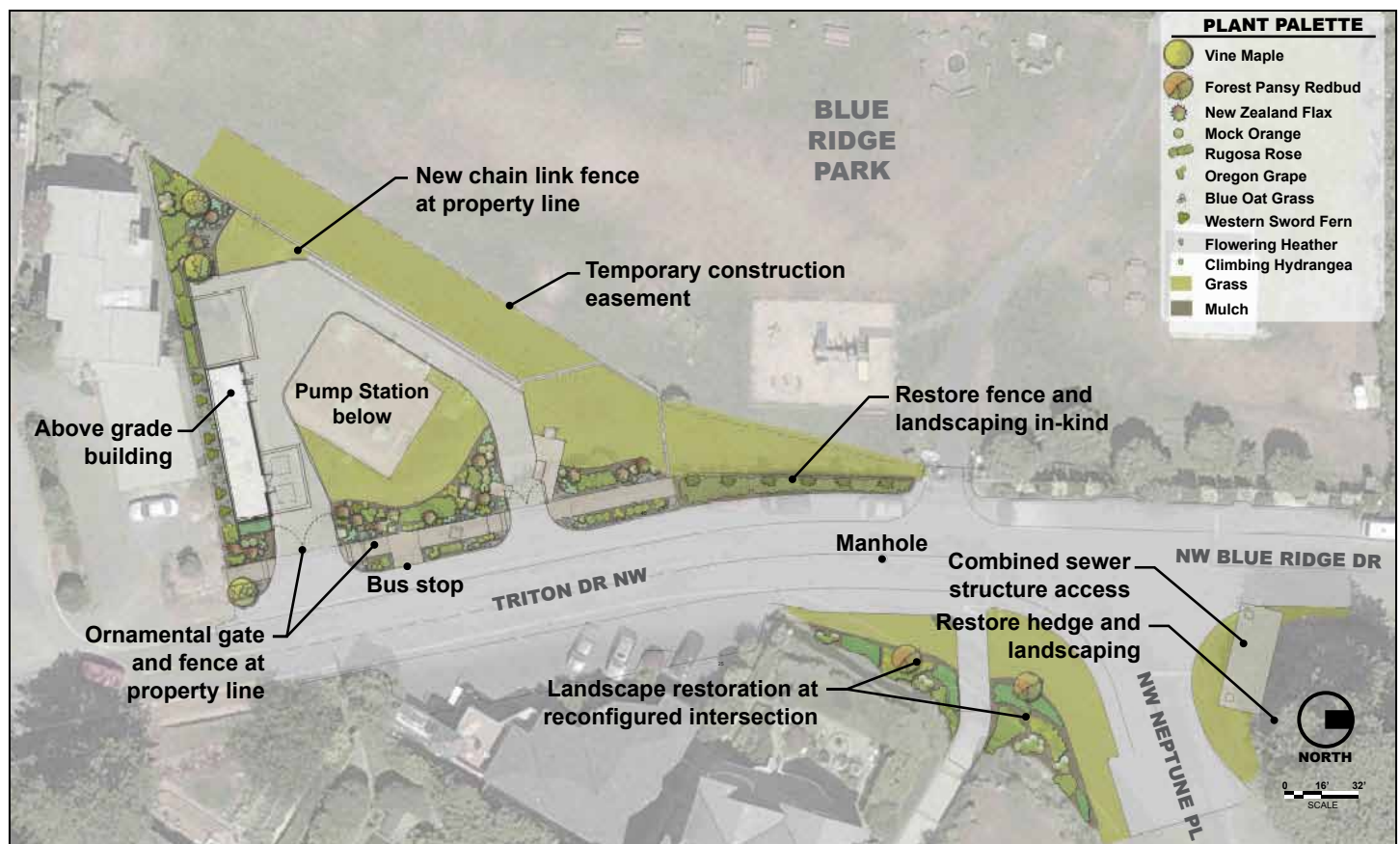
During construction, a team of Community Services and Construction Management (CM) staff will be available to respond to questions, concerns and complaints around the clock. Our CM staff will work directly with the contractor to identify reasonable solutions to problems that may arise during construction of this critical project.

**What's the best way to keep you up to date?** We'd like to hear from you how you want to hear from us! Join our email list or let us know the best way to get information to you by contacting Monica Van der Vieren at [monica.vandervieren@kingcounty.gov](mailto:monica.vandervieren@kingcounty.gov) or 206-263-7301.

## Design updates

Through a series of workshops held in 2012, the community helped shape the final look and feel of the architecture and landscaping for the new facility. As permit conditions have developed, the design detail has been refined. In order to meet stormwater management requirements, pervious pavement has been designated for the driveway surface. The equipment configuration on the pump station site has been slightly modified with the addition of a vent on-site and relocation of vents associated with the underground fuel storage tank.

Landscaping in the right-of-way in front of Blue Ridge Park will be removed both for utility relocations, and later, for CSO facility construction and establishment of a pedestrian walkway to the park. Landscaping will be restored when the project is complete.



Updated artist's rendering of completed project



## *Managing our assets: North Beach outfall and force main maintenance*

In 2012-2013, King County's contractors conducted survey work and video inspection for upcoming repairs on the North Beach Pump Station outfall, the discharge pipe which extends from the pump station out into Puget Sound. Two holes in the outfall will be repaired by King County's contractor during low tide periods on June 24-26, 2013. The contractor will secure steel plates over the holes and wrap the pipe with fiberglass tape specially designed for application in a wet environment. The North Beach outfall was in service when the North Beach Sewer District operated a wastewater treatment facility at the current pump station location.

In 2012, the North Beach forcemain, a pressure sewer pipeline extending from North Beach Pump Station to Carkeek Wet Weather Facility, underwent a routine evaluation for remaining service life. King County WTD has identified a conservative estimate of 20 additional years of service life for this pipeline. The report can be viewed on the project Web page, or a hard copy obtained by contacting Monica Van der Vieren, at

**monica.vandervieren@kingcounty.gov** or **206-263-7301**.

To find out more about King County's CSO control program and to view CSO control annual reports, visit [www.kingcounty.gov/environment/wastewater/CSO.aspx](http://www.kingcounty.gov/environment/wastewater/CSO.aspx).



*Above: Forcemain inspection Below: North Beach Outfall*



*North Beach CSO System Area*



## Utility investigations and relocation

The project team continues to prepare for construction expected to begin in late 2013. Since many utilities in the project area are located underground, an important step will be moving the utilities before work to build the storage tank begins.

In the coming months, we will be working with private utility companies to relocate utility lines as needed for construction. While utility companies will provide advance notice of work to neighbors and customers, we will keep nearby residents informed and updated as we move forward with this work.

## North Beach CSO Project Timeline



**For additional information** please visit the project Web page at [www.kingcounty.gov/environment/wtd/Construction/Seattle/NBeachCSOStorage](http://www.kingcounty.gov/environment/wtd/Construction/Seattle/NBeachCSOStorage), or contact Monica Van der Vieren at [monica.vandervieren@kingcounty.gov](mailto:monica.vandervieren@kingcounty.gov) or 206-263-7301.



### King County

Department of Natural Resources and Parks

#### Wastewater Treatment Division

201 S. Jackson St., Suite 505

KSC-NR-0505

Seattle, WA 98104-3855

*Creating Resources from Wastewater*




## We're headed toward construction!

Information on next steps for the North Beach CSO Control Project inside

### Alternative Formats Available

206-684-1280 TTY Relay: 711

Printed on recycled paper.

Please recycle. 

1305\_3315\_NbeachCSOnews.indd wgab