

**King County**

## **North Beach CSO Control Project**



**Blue Ridge General Meeting for the Blue Ridge  
and North Beach communities  
June 11, 2012**

**HDR** and Team



# Agenda

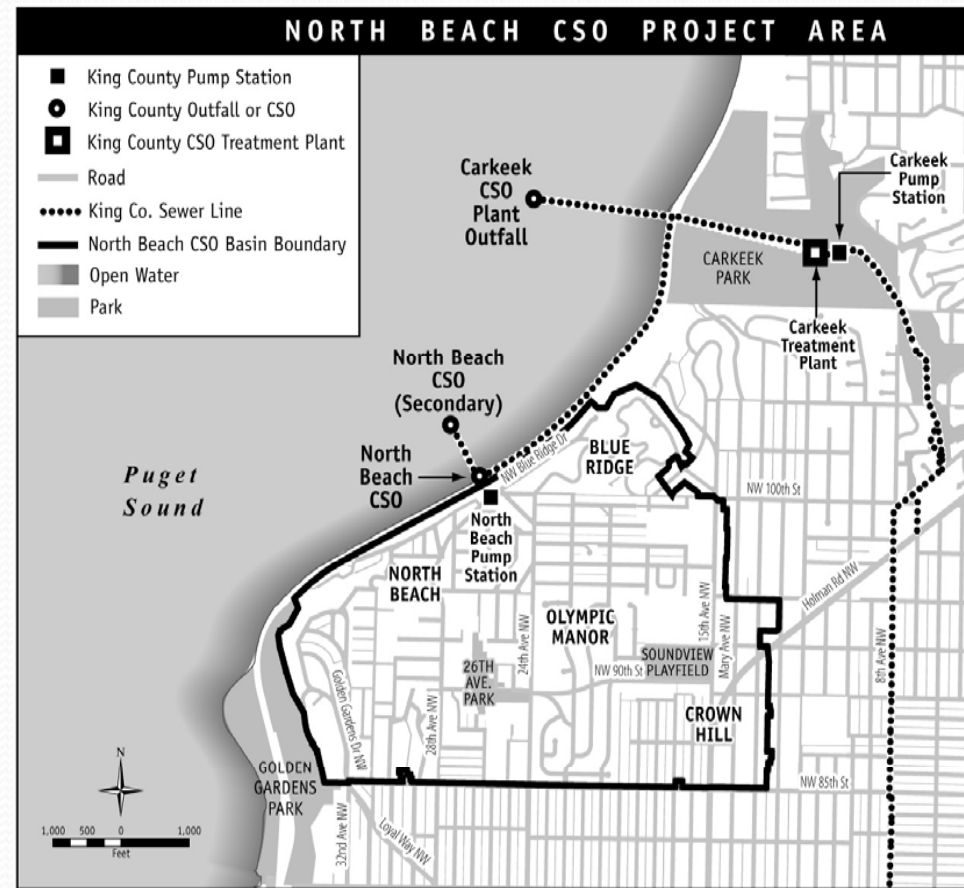
- *Team Introductions*
- *Project status*
- *Street Improvement Permit elements*
- *Landscape and architecture concepts*
- *Staging options*
- *North Beach Force Main Assessment Update*



King County

# Why is King County Doing this Project?

- Meet State regulations which require no more than one CSO discharge per year on average
- Uncontrolled CSO discharge from the North Beach Pump Station
  - 11 discharges reported for 2010
  - Discharges occur from two outfalls, one on the beach







# Project Status

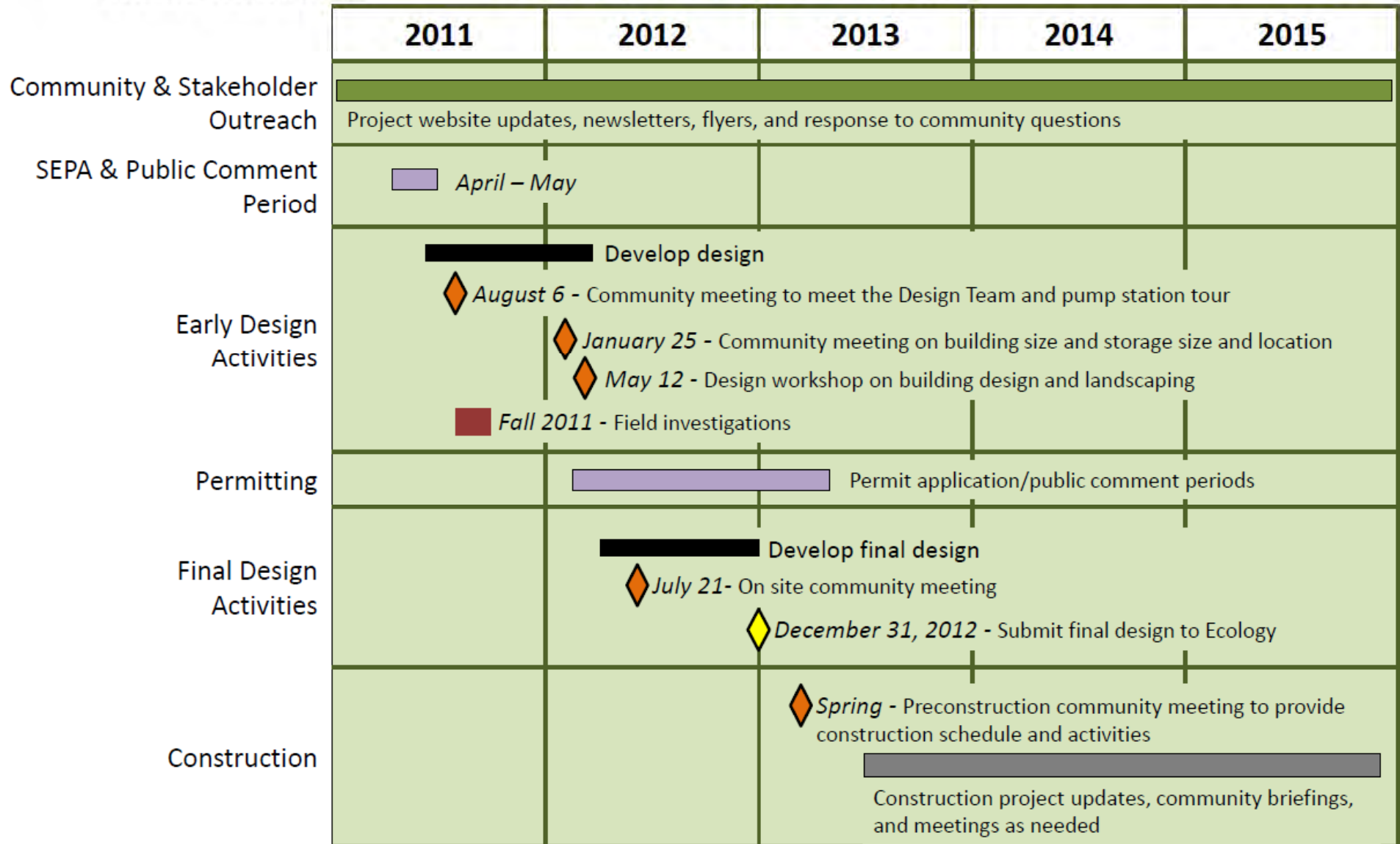
- What we're hearing
  - Preference for one design theme, with some exceptions
  - Concerns about street lighting and stormwater management approaches for the right-of-way
  - Other concerns- road conditions and staging
- Independent project review is underway
- What the project team is doing
  - Discussions with permitting agencies



## NORTH BEACH

### CSO CONTROL PROJECT TIMELINE

MAY 2012







King County

# Project Area







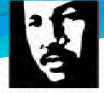
King County

# Street Improvement Permit (SIP)

## **Permitting process for City of Seattle**

### **– to unify City-wide improvements**

- Addresses right-of-way improvements
- SDOT works collaboratively with utility owners
- Includes a series of milestones that the project must pass
- All City departments represented at meetings



# Evolving Issues - SIP

- Sidewalk & planter strip
- Intersection configuration
- Stormwater management in ROW- no GSI required
- Street trees
- Street lighting







King County

# Street Frontage Improvements

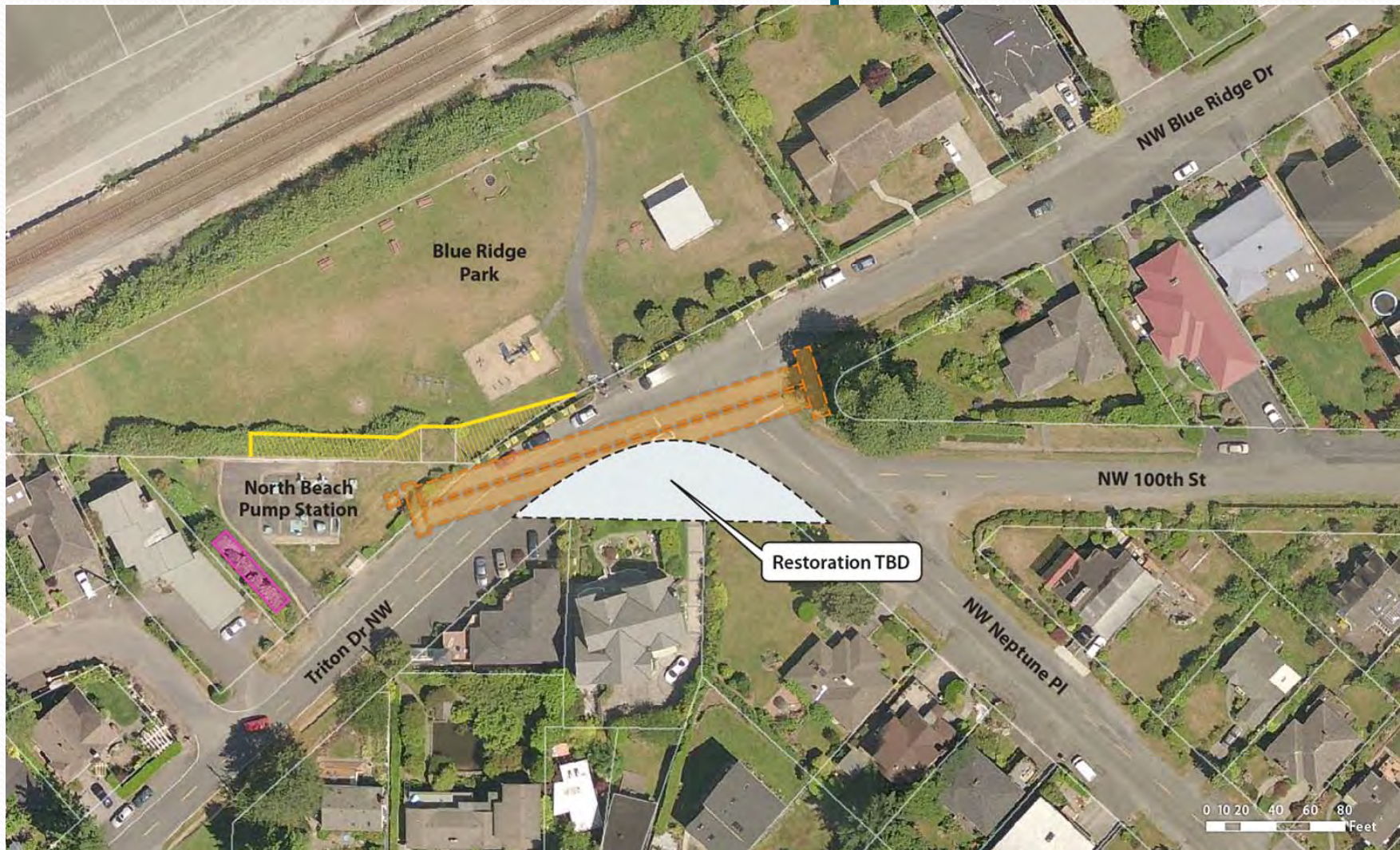






King County

# Potential Street Improvements

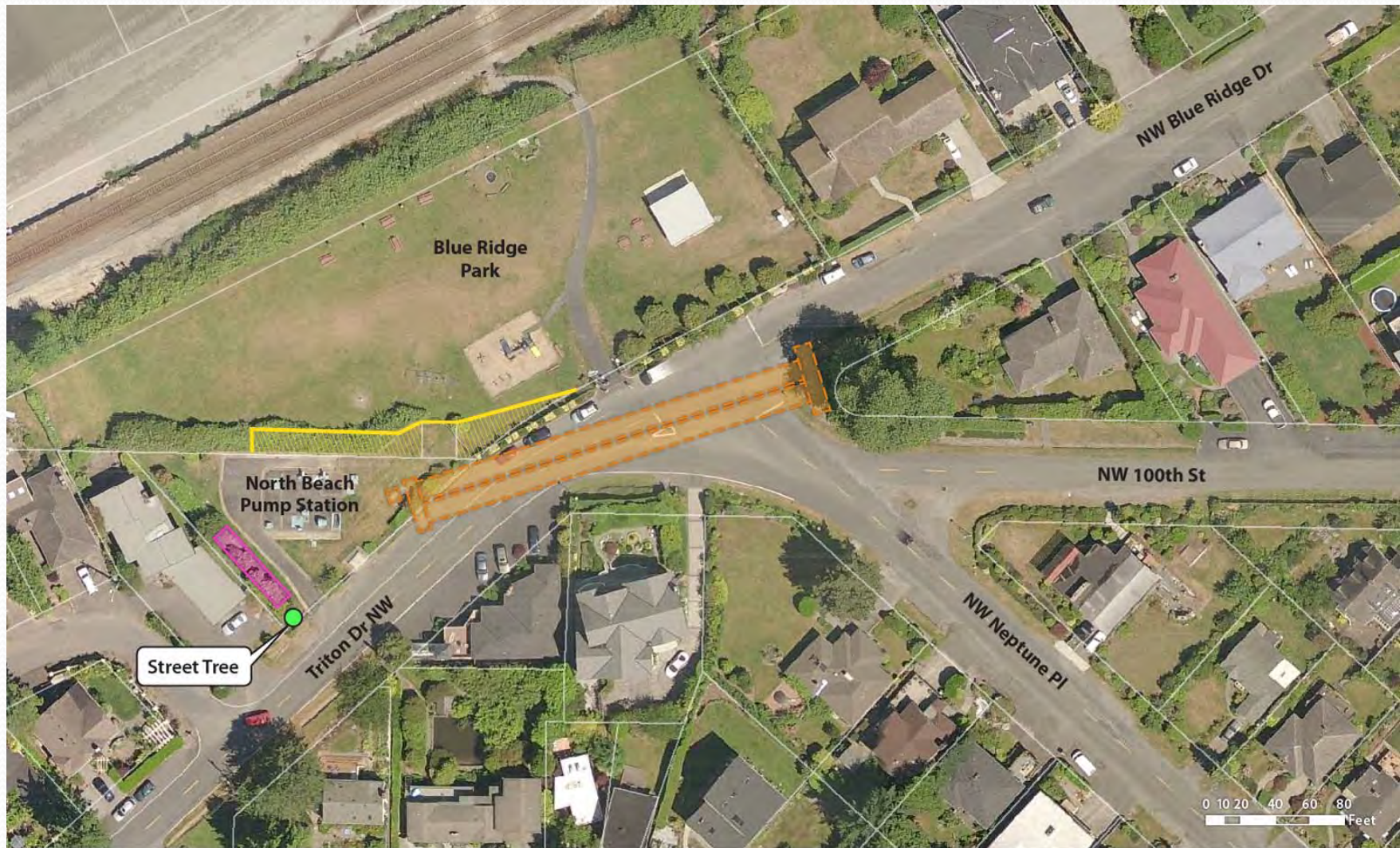






King County

# Street Tree

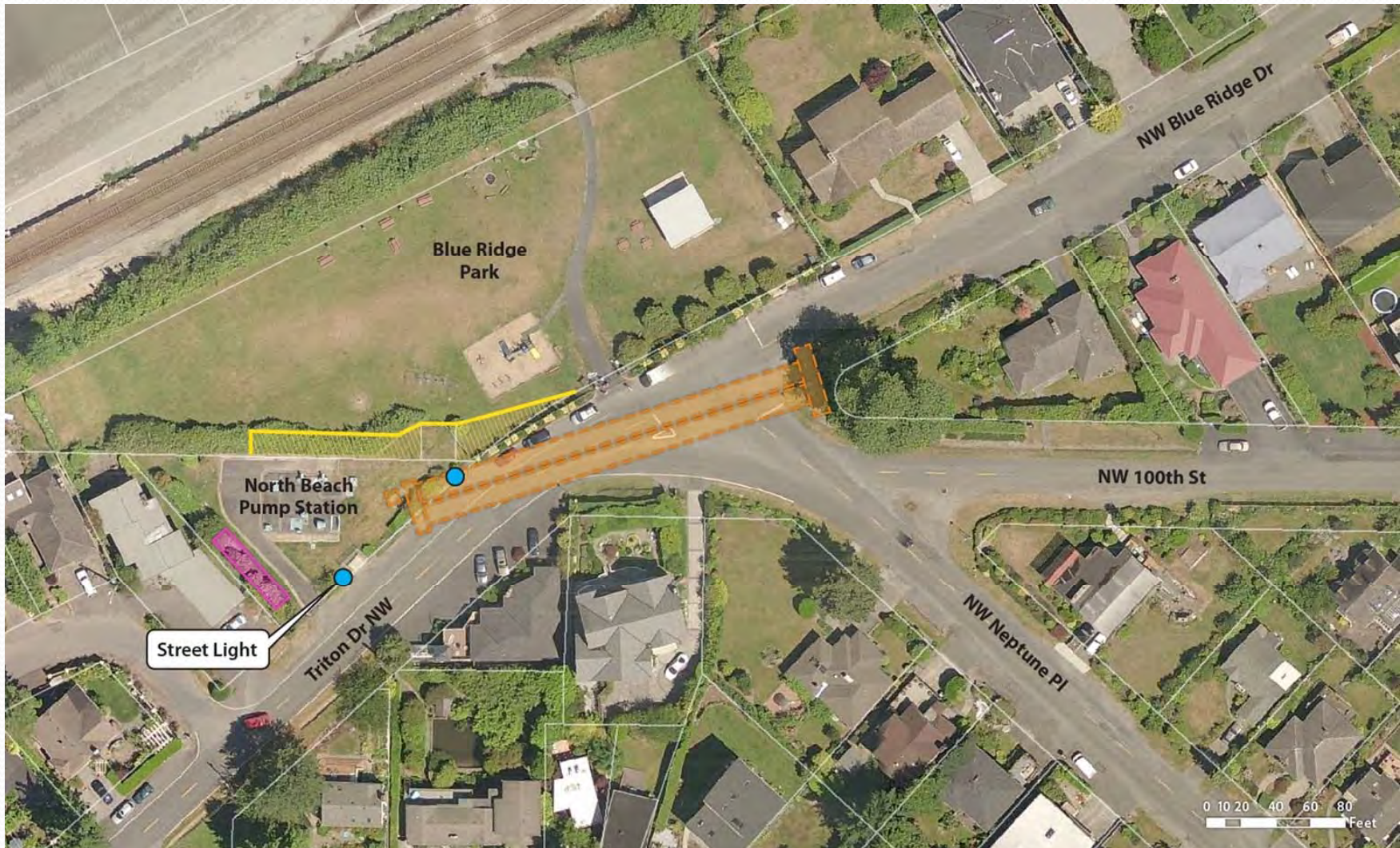






King County

# Street Lighting



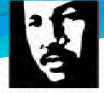




# Overview of Design Themes



- Roof line
- Material & color palette
- Landscaping
- Fence type



King County

# Project Design Constraints

- Size, height and location of the building
- Existing underground infrastructure
- Existing utilities locations
- Safety and O&M access to all facilities
- Code requirements
- Fencing for safety & security
- Bus stop requirements

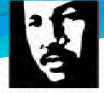






# Architecture Guiding Principles

- Locate the new equipment building to avoid blocking existing views as much as possible
- Minimize building height and visual impact as much as possible
- Use natural and muted color palette and materials to blend into the surrounding
- Use durable and low maintenance materials for sustainability



# Landscaping Guiding Principles

- Provide screening for facility features
- Soften fence line and building and provide an aesthetically pleasing appearance
- Maintain sightlines and view corridors towards Puget Sound
- Meet City stormwater control requirements
- Meet County and City landscape design guidelines for:
  - low maintenance
  - drought tolerant
  - native plants



# Theme I



**Building materials and landscape elements reflect natural dune features**



# Theme I- View from Blue Ridge Park





## Theme II



King County



**Building materials and landscape reflect Northwest regional influences**



# Theme II- View from Blue Ridge Park





# Theme III



**Building materials and landscape elements reflect the surrounding neighborhood**



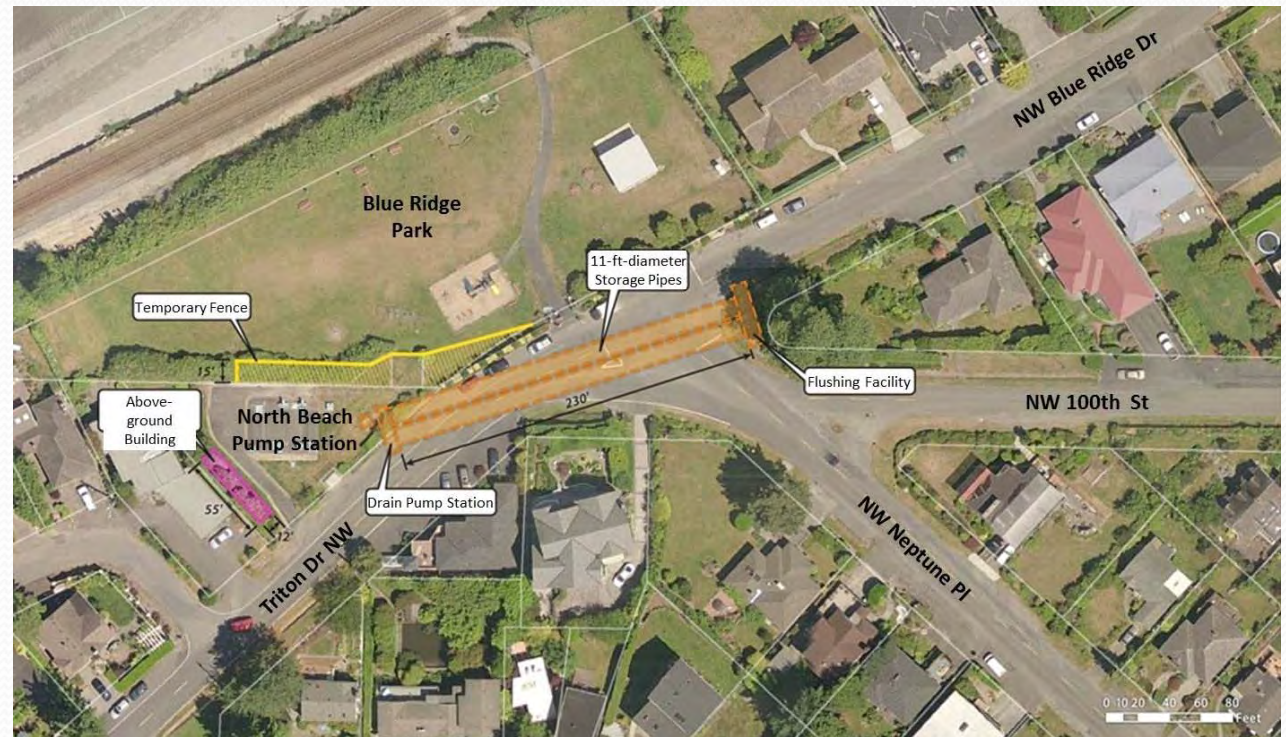
# Theme III- View from Blue Ridge Park





# Staging options

- On site- in street
- On site- private property
- Offsite staging areas





# Community feedback on design

- Feedback taken at May 12 workshop
- Let us know what you think tonight, or send in a comment form
- Packets mailed to community members on request
- Survey Monkey online until end of June



# North Beach Force Main Condition Assessment



- King County is updating the service life of the North Beach Force Main
- Environmental review under State Environmental Policy Act (SEPA) completed, comment period ended June 4
- Assessment to be carried out in late summer/early fall
- Contractor will excavate pipe and obtain samples for analysis





**King County**

Department of  
Natural Resources and Parks  
**Wastewater Treatment  
Division**

The information included on this map has been compiled from a variety of sources and is subject to change without notice. King County makes no representations or warranties, express or implied, as to accuracy, completeness, timeliness, or rights to the use of such information. This document is not intended for use as a survey product. King County shall not be liable for any general, special, indirect, incidental, or consequential damages including, but not limited to, lost revenues or lost profits resulting from the use or misuse of the information contained on this map. Any sale of this map or information on this map is prohibited except by written permission of King County.

FileName: q:\wtd\projects\CSOs\Projects\Phase1NorthBeach\project\Coupon\_Forcemain\_Outfall\_Jetter.mxd- peter keum  
Data Source: KC

**Force Main & Outfall  
with Coupon Locations**

*North Beach CSO*





# Contact us

- Monica Van der Vieren at (206) 263-7301 or [Monica.vandervieren@kingcounty.gov](mailto:Monica.vandervieren@kingcounty.gov)
- More information on the web  
<http://www.kingcounty.gov/environment/wtd/Construction/Seattle/NBeachCSOStorage>