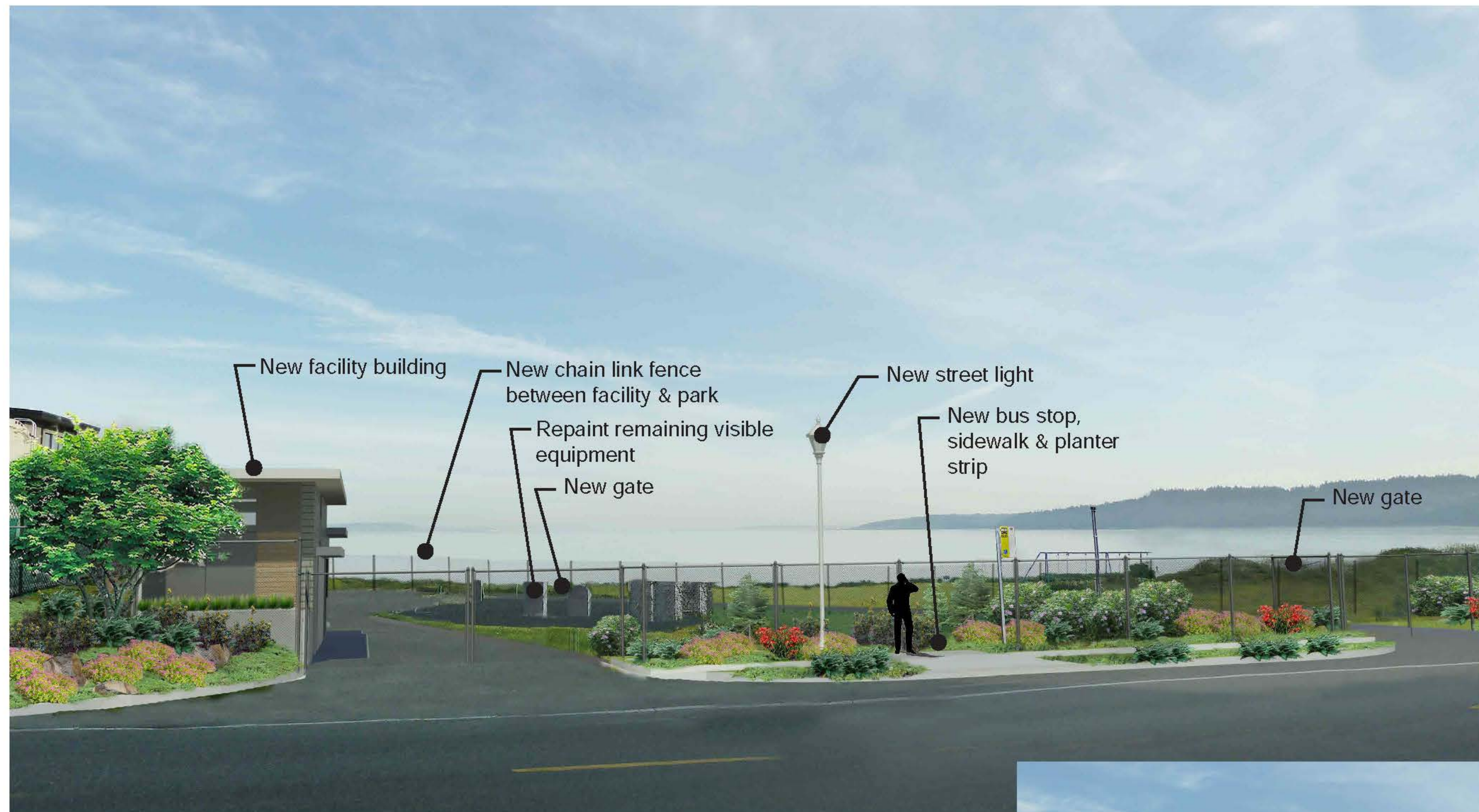


Theme III

Building materials and landscape elements reflect the surrounding neighborhood



Design Features:

- Stepped roof line
- Colors and materials respond to shoreline homes and residential color palettes
- Northwest alpine plantings
- New fence between facility and park
- Repaint remaining visible equipment
- New bus stop and sidewalk

View from NW Blue Ridge Drive with proposed improvements

*Plants shown at approximately 5 year growth



Existing View

North Beach CSO Control Storage Project

Theme III



View from Blue Ridge Park with proposed improvements
*Plants shown at approximately 5 year growth



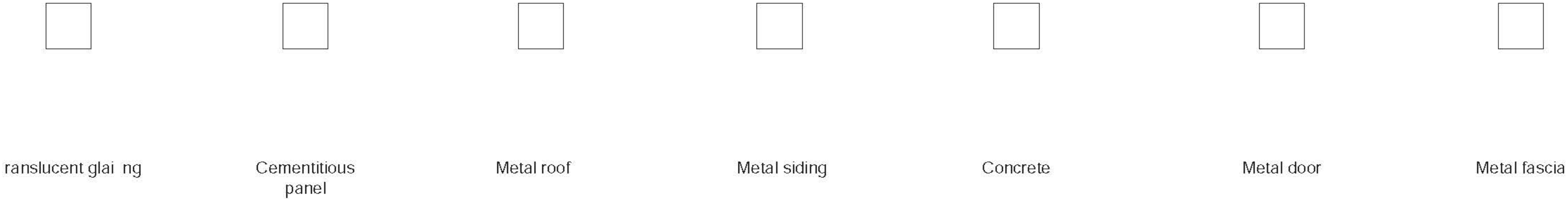
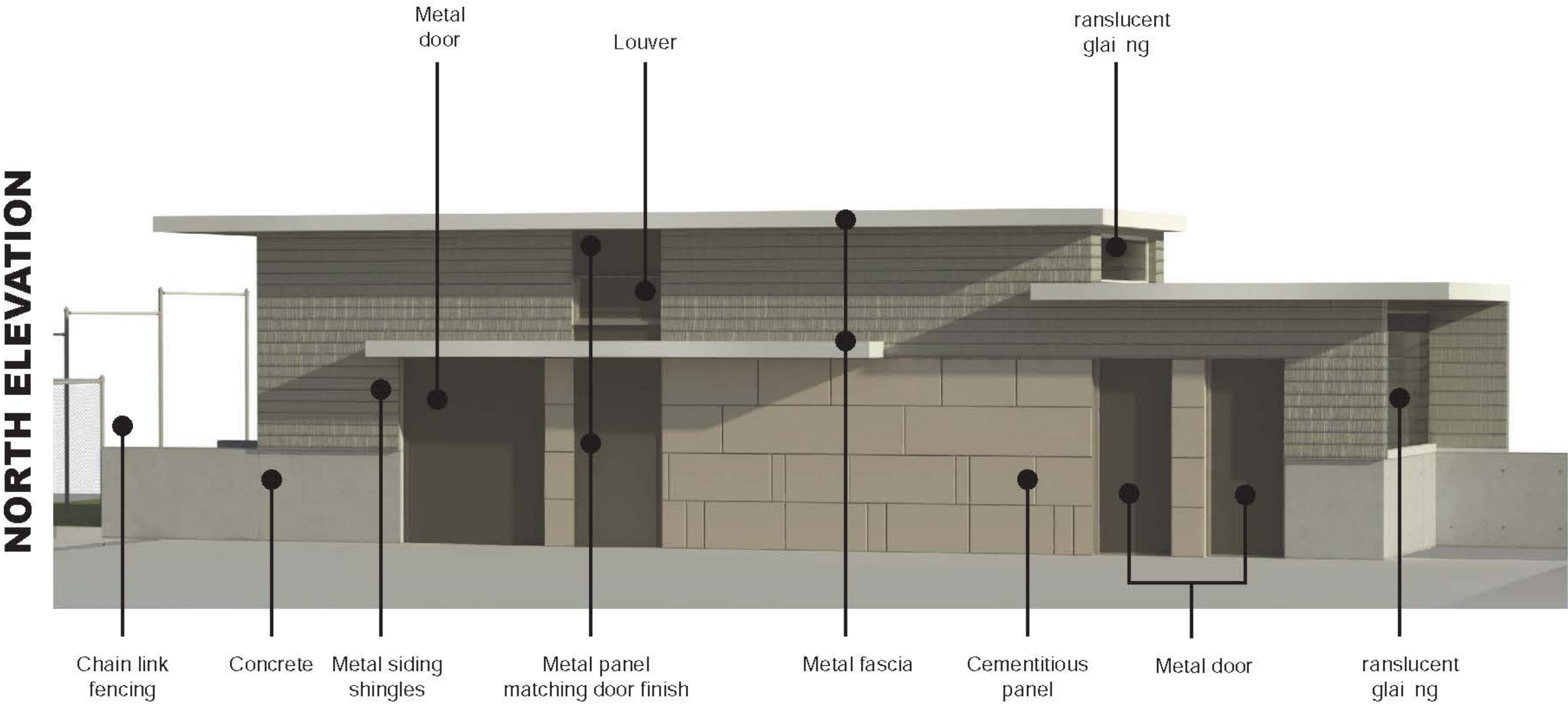
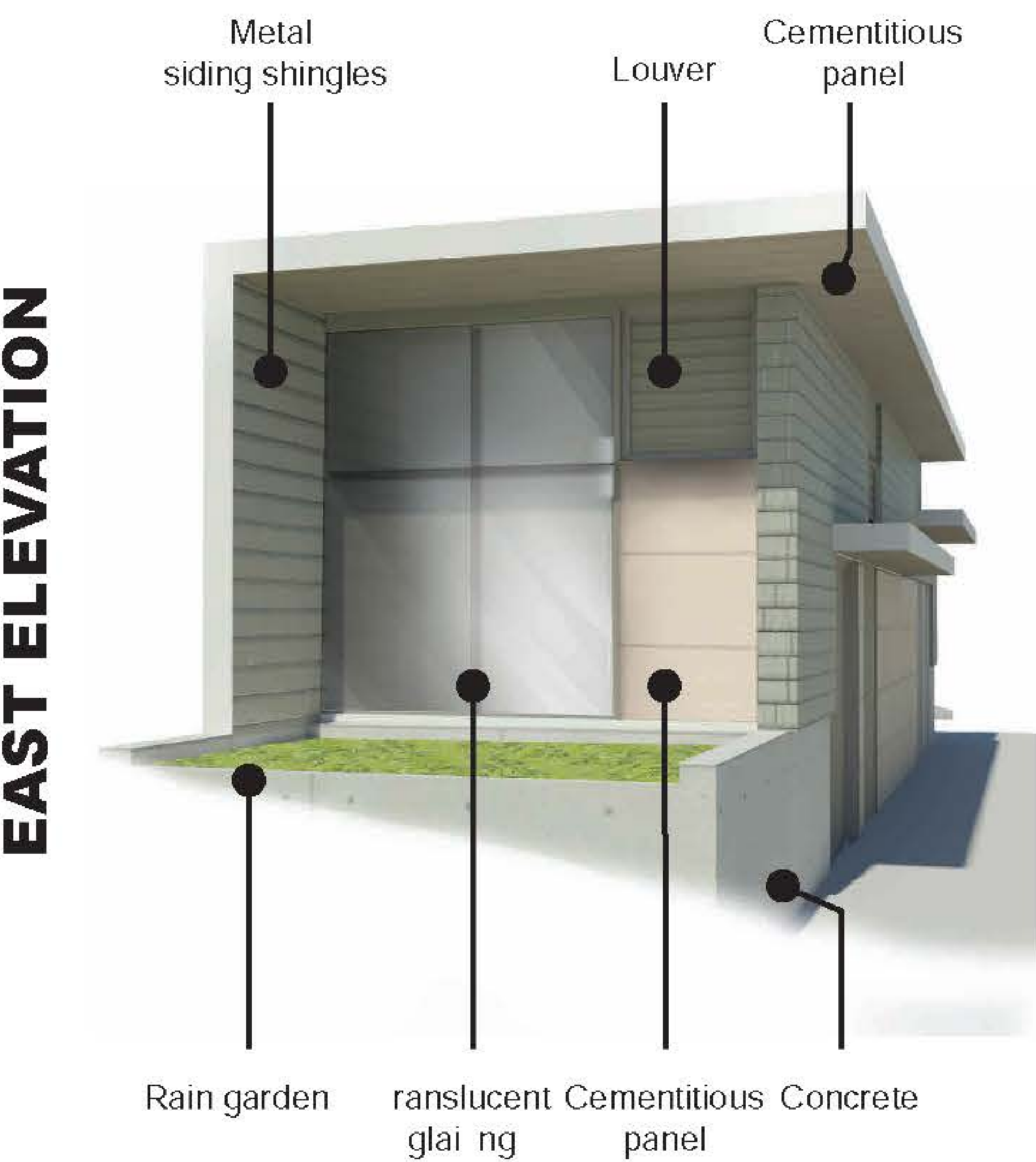
Existing View

North Beach CSO Control Storage Project

Theme III

Architectural Materials

- Colors and materials are chosen to respond to shoreline subdued and muted to reflect residential color palettes



North Beach CSO Control Storage Project

Theme III

Landscape Features

- Primarily native alpine and subalpine plantings with ornamental accents. Basalt outcroppings placed near facility entries.

SHRUBS/TREES



Vine Maple - 12-18' Ht.



Subalpine Fir - 15' Ht. at 20 years



Nootka Rose Hybrid - 4-5' Ht.



Low Oregon Grape - 2' Ht.



Lucifer Crocosmia - 3' Ht.



Western Sword Fern - 2-3' Ht.



Goldmound Spirea - 2-3' Ht.

LANDSCAPE FEATURES



Basalt - repurposed on site boulders

STORMWATER BASIN



Dagger-leaf Rush - 1' Ht.

GROUNDCOVERS



Alpine Phlox - 6" Ht.



Cotoneaster - 1' Ht.

North Beach CSO Control Storage Project