



## Murray CSO Control Project

# Pre-Construction Public Meeting

November 6, 2013

# Presentation Overview

---

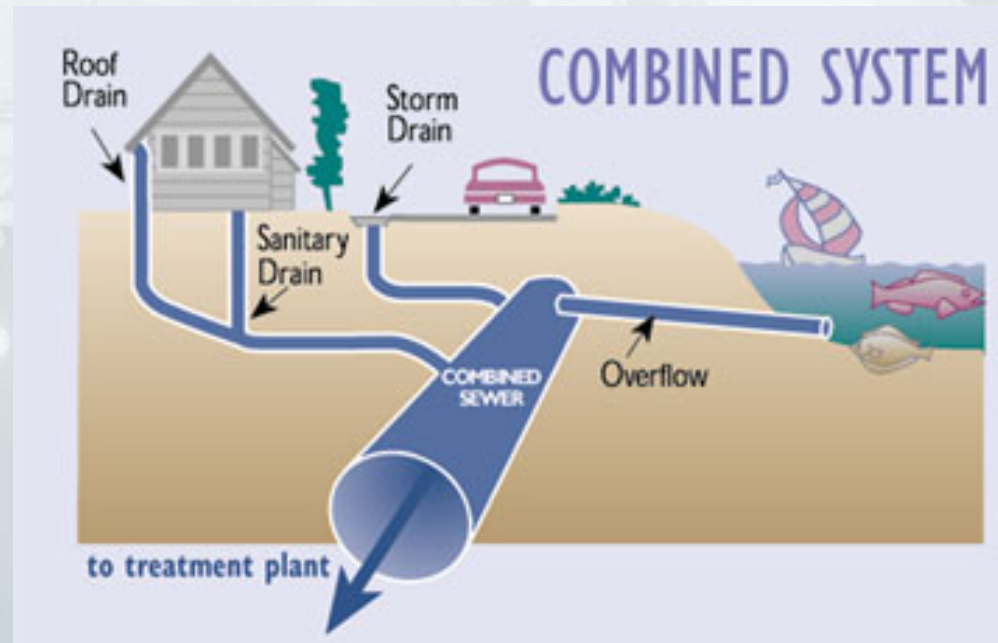
- Project team introductions
- King County mission and role
- Why is this project necessary?
- Facility design
- Construction techniques
- Schedule
- What to expect during construction
- How to stay informed
- Question time

Why is the project necessary?



# Combined Sewer Overflows (CSOs)

- In most of Seattle, one pipe transports sewage and polluted stormwater for cleaning and discharge
  - Common to older systems
- During storms, excess flows go directly to Seattle water bodies
  - Called Combined Sewer Overflows (CSOs)
- Important safety valves
  - Prevent sewer backups in our homes and streets
  - Harmful to the environment and public health



# Murray CSO Control Facility requirements

## Basin Description and Requirements

- 992 acres
- Murray CSOs
  - Average 5 events per year
  - Average 5 million gallons per year
- Control requirements
  - 1,000,000 gallons of storage
- Other required elements
  - Odor control
  - Stand-by generator



## Facility Design



# New open space, more trees, wider sidewalks

## Common Themes for Design

- Minimize industrial feel
- Encourage views of Puget Sound
- Discourage through traffic on Beach Drive
- Enhance continuous space between park and facility site





# View from Lowman Beach Park

← North

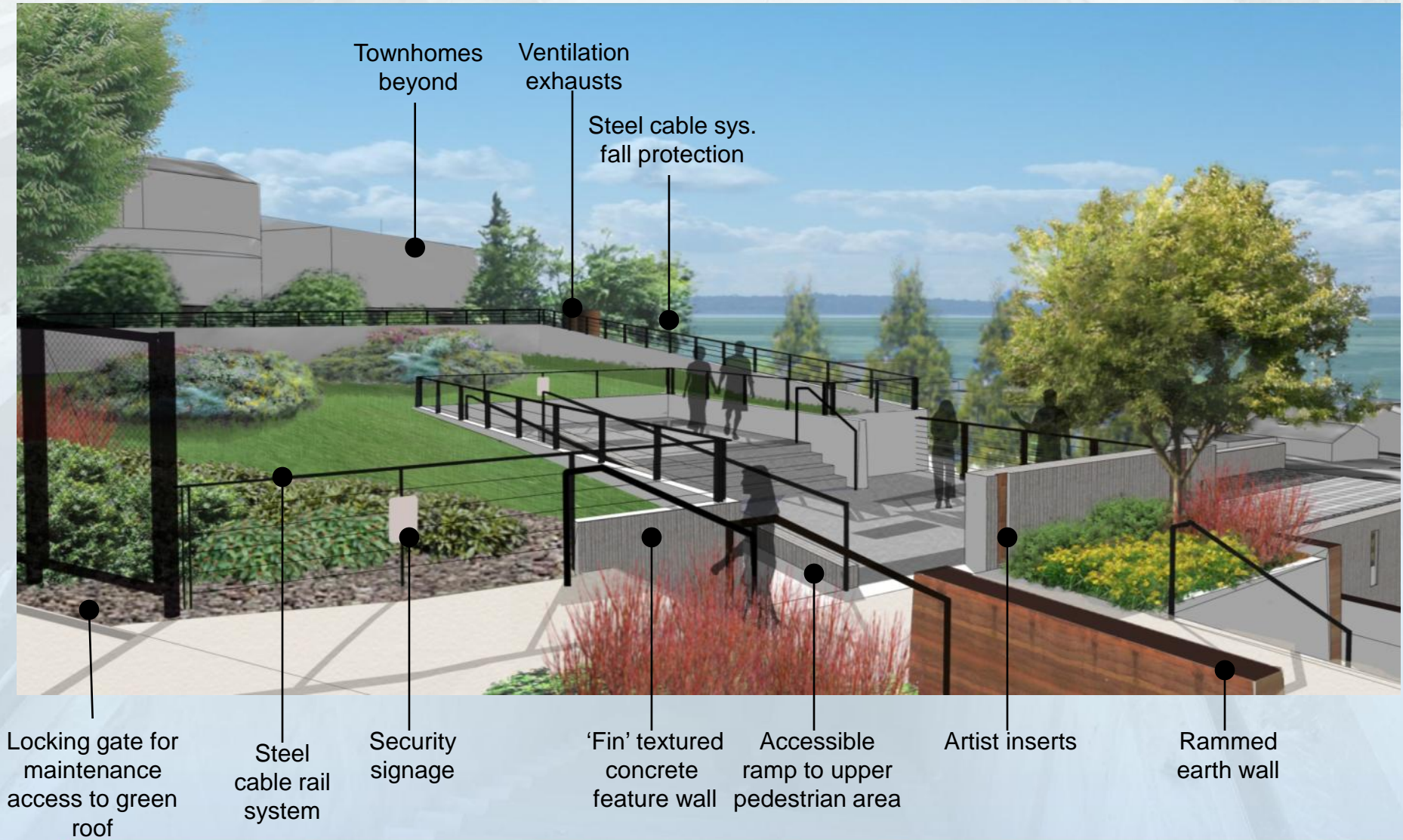
Lincoln Park →



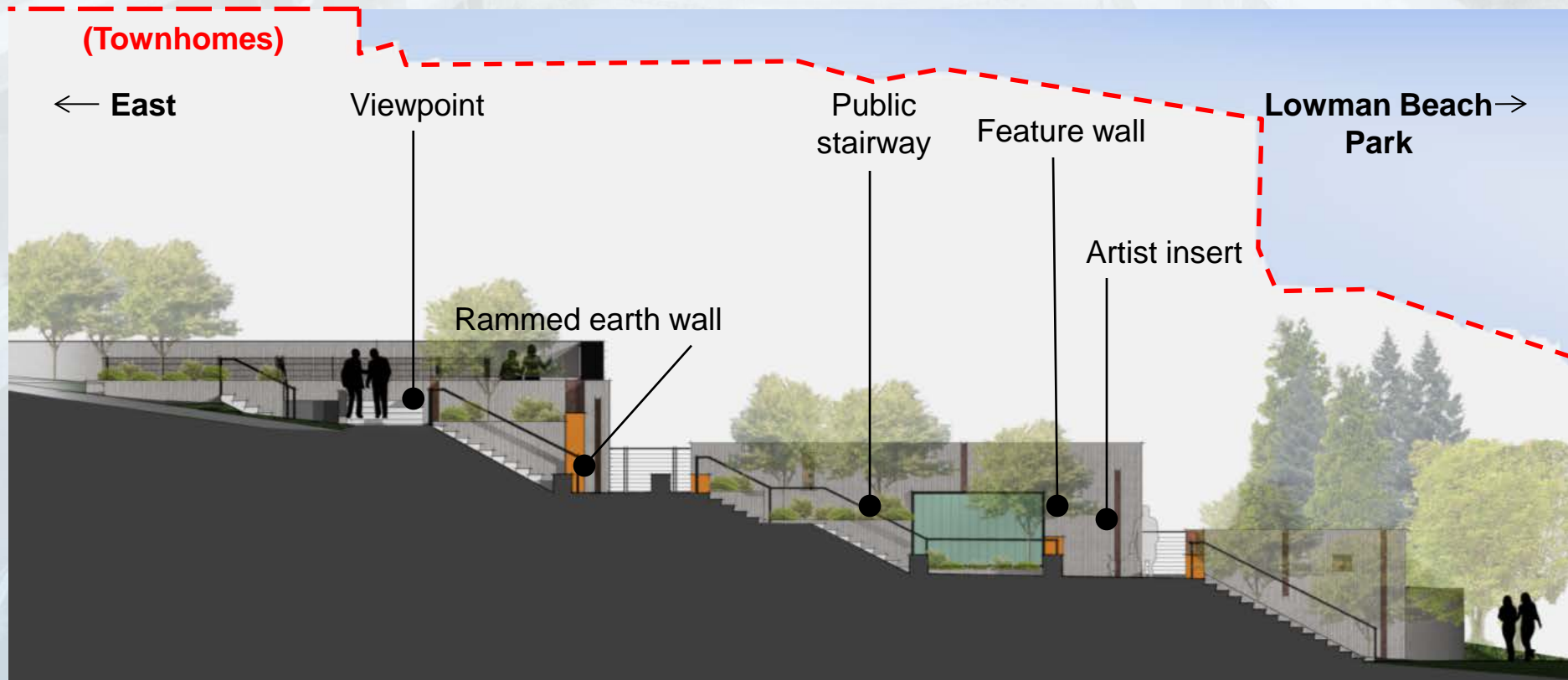
*3-5 Year Plan View; Tree growth will screen facility over time*



# Facility green roof depicts alpine meadow



# New public space, art installations along stairs



*Vegetation screened back for clarity*



# Improved pedestrian access to Lowman Beach Park





How will the facility be built?



# King County construction team roles

---

- **King County Project Representative – Ukwenga Oleru**
  - Works directly with contractor, ensures project is completed on time and on budget
- **Project Consultant Engineer – Eric Bergstrom**
  - Chief engineer on facility design
  - Addresses engineering questions that arise during construction
- **Project Inspectors – Mario Serra, Fred Tervet**
  - On site daily to work with the contractor to ensure job quality, safety and permit compliance
- **Contractor – Shimmick Construction**
  - Performs the work to complete the contract scope. Oversees any subcontractors necessary to complete the job
- **King County Community Relations Lead – Doug Marsano**
  - Works directly with the community to identify and address community concerns related to the project

# Site conditions

- Relatively small site
  - Residential/  
recreational  
location
- Below developed  
hills
- High ground water
- Diverse soils
  - A mix of clay, peat  
and sand





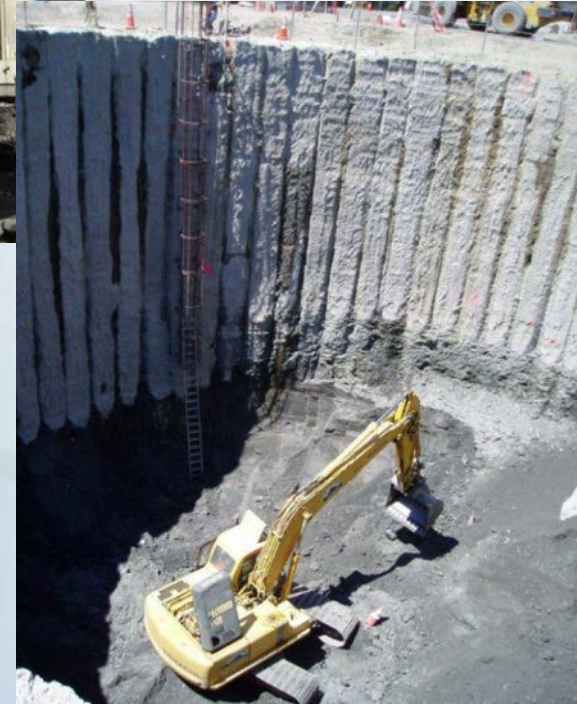
# Soil nail walls to support eastern hillside by Lincoln Park Way

- Steel rods inserted
- Screens attached
- Reinforced with concrete
- Adds stability
- Controls erosion



# Secant piles shore the tank site during excavation

- Interlocking concrete cylinders
- Drill removes soil, replaces with concrete
- Cylinders create a watertight ring
  - Safeguard against settlement
  - Reduced dewatering
- Ring dimensions
  - Nearly 100 feet across
  - 80 feet deep
  - Enough excavated materials to fill Colman Pool twice





# Concrete Foundation and Tank Interior

- High groundwater at the site
- 20 foot thick concrete slab installed below tank prevents “floating”
- Crews will form and pour tank above slab
  - Walls, columns
  - View deck
  - Roof





# Large utilities beneath Beach Drive Southwest

- Power, HVAC, water line, overflow pipes connect tank to Murray Pump Station in Lowman Beach Park

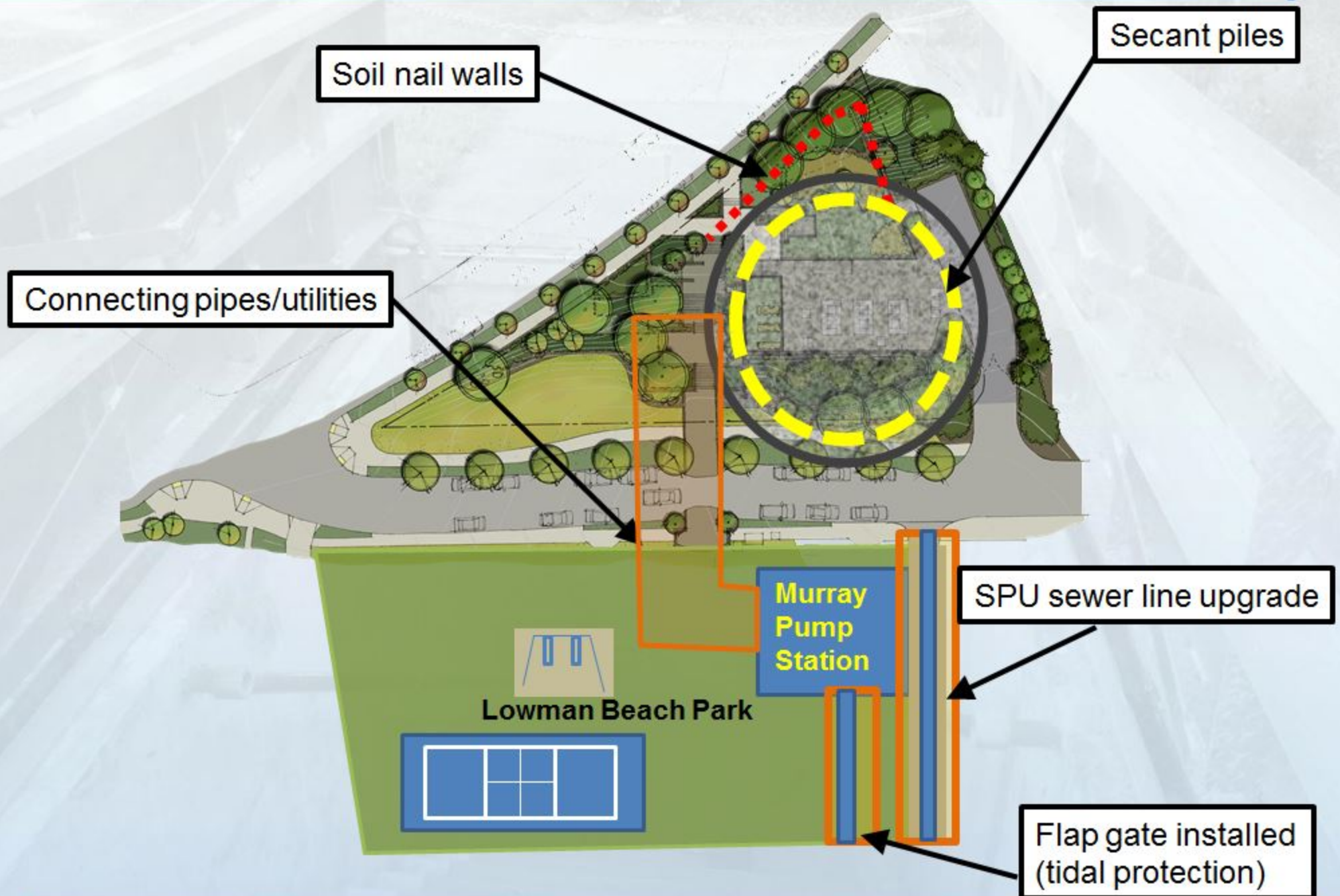




# Temporary steel plates allow Beach Drive to remain open



# Construction Methods

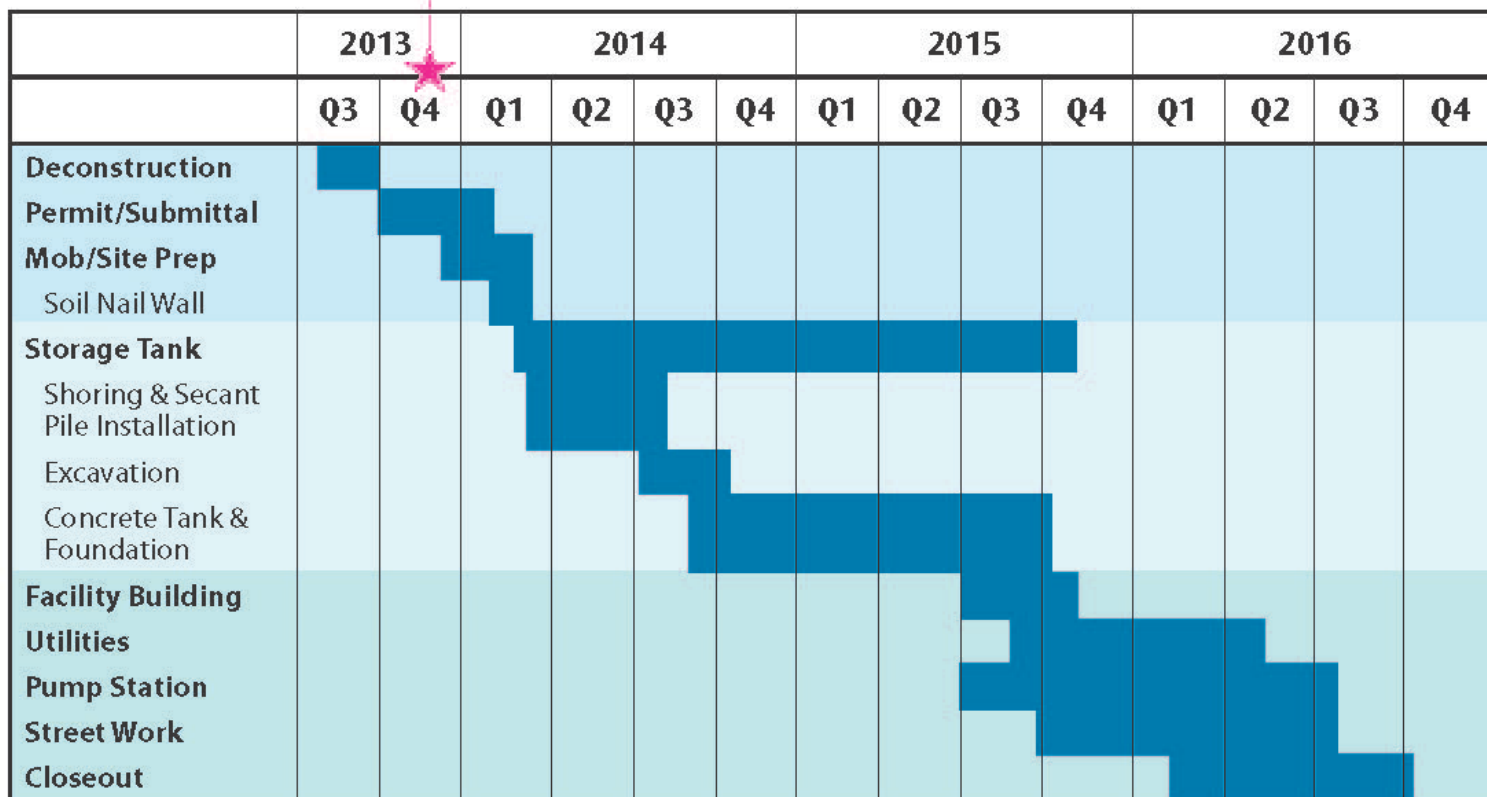




# Construction Schedule

## Construction Schedule Overview

WE ARE HERE



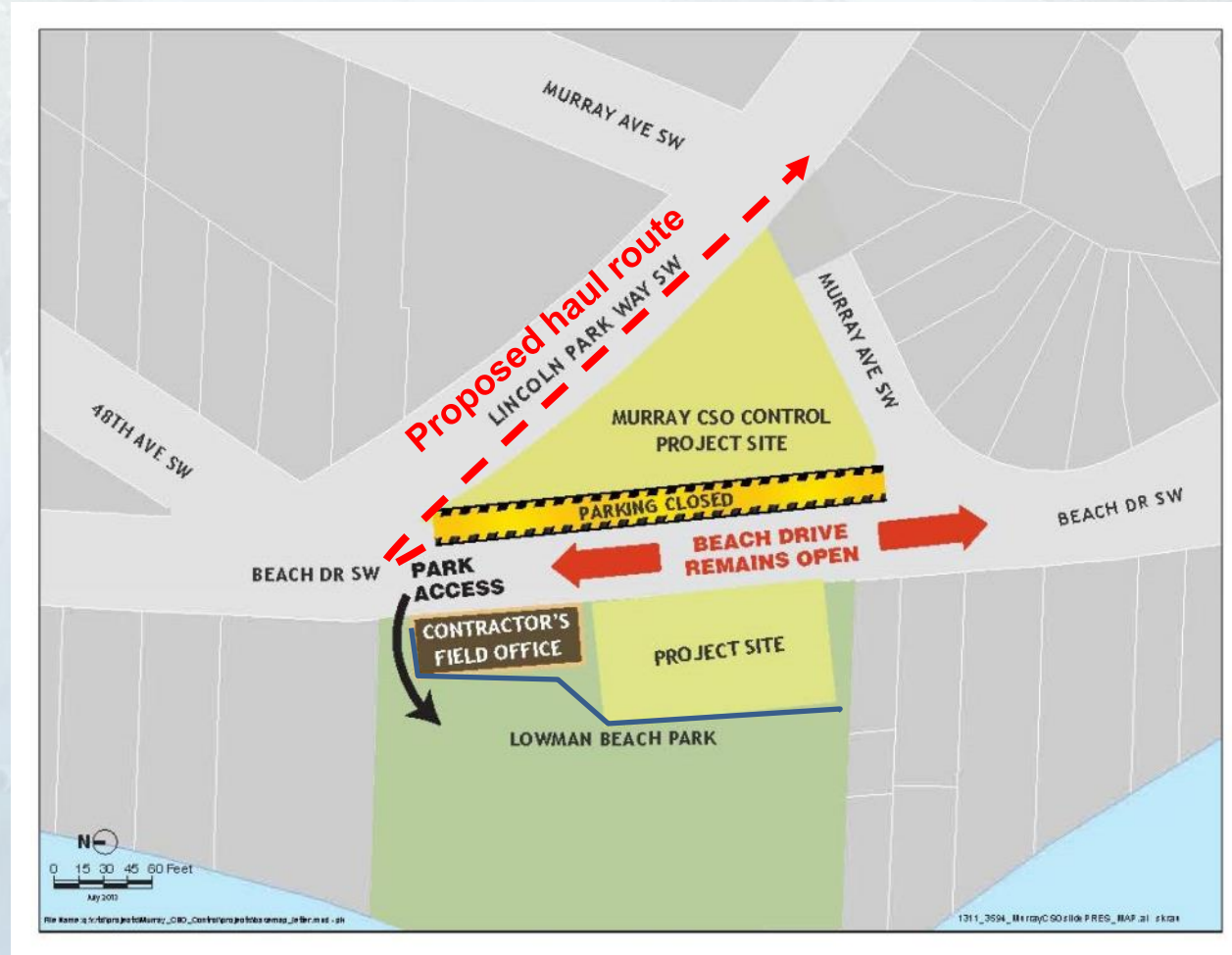
1311\_3594\_MurrayCSOslidePRES\_SCHEDULEai skrau

## What To Expect



# What to expect during construction

- Heavy equipment, truck traffic, and noise
- Work hours typically 7 a.m. - 6 p.m. weekdays
- Access to Beach Drive Southwest maintained
- No parking on eastern side of Beach Drive Southwest for duration of project
- Access to Lowman Beach Park facilities, beach maintained
- No Surprises!



# How will King County share information?

- Project site signs and flyer box
- Progress updates
  - Email, flyer (*Regular mail upon request*)
- 48-hours notice (minimum) for intense activities
  - Email, flyer and phone
- Periodic mailings
- Other project information resources:
  - West Seattle blogs and newspapers
  - Lowman Beach Park community board
  - Some local West Seattle businesses





# How can you contact the project?

---

- Every project inquiry gets individual attention
- Staff available to answer questions 24 hours a day
  - Call project hotline: **206-205-9186**
  - Send email: [\*\*doug.marsano@kingcounty.gov\*\*](mailto:doug.marsano@kingcounty.gov)
  - Submit online comments at project web page:
    - Search for “Murray CSO” at [\*\*www.kingcounty.gov\*\*](http://www.kingcounty.gov)

# Stay Safe!

- **Avoid the work area!**
  - Don't engage workers
- Alert King County to any potential hazards
  - **Project hotline: 206-205-9186**
- Use identified pedestrian/bicycle pathways
- Follow detours
- Obey traffic signs, no park zones and traffic control personnel as necessary
- Drive slowly through site





# THANK YOU!

---

## Questions?