

# MURRAY BASIN CSO CONTROL PROJECT

Public meeting  
October 20, 2011



**King County**

Department of  
Natural Resources and Parks  
**Wastewater Treatment  
Division**

# Tonight's presentation



- What are Combined Sewer Overflows (CSOs) and what is King County doing to control them?
- Murray Basin CSO control project
- Murray Basin CSO control facility
- Community participation in facility design

# What is a CSO?

- Most older cities—including Seattle—built one conveyance system to carry both wastewater and stormwater to treatment plants.
- Combined Sewer Overflows (CSOs) are untreated overflows sent directly to Seattle water bodies during storms when sewers are full.
- CSOs are a safety valve to prevent sewer backups in homes and streets, but they contain harmful chemicals and disease-causing pathogens.



# King County CSO Control Program



- CSO control required by state and federal law
  - ▣ State standard for untreated overflows=1 /yr average
- Highest priority projects along Puget Sound beaches
- For more information on King County's efforts, visit:  
<http://www.kingcounty.gov/environment/wastewater/CSO/ProgramReview.aspx>



**King County**

Department of  
Natural Resources and Parks  
**Wastewater Treatment  
Division**

# Basin Description and Requirements

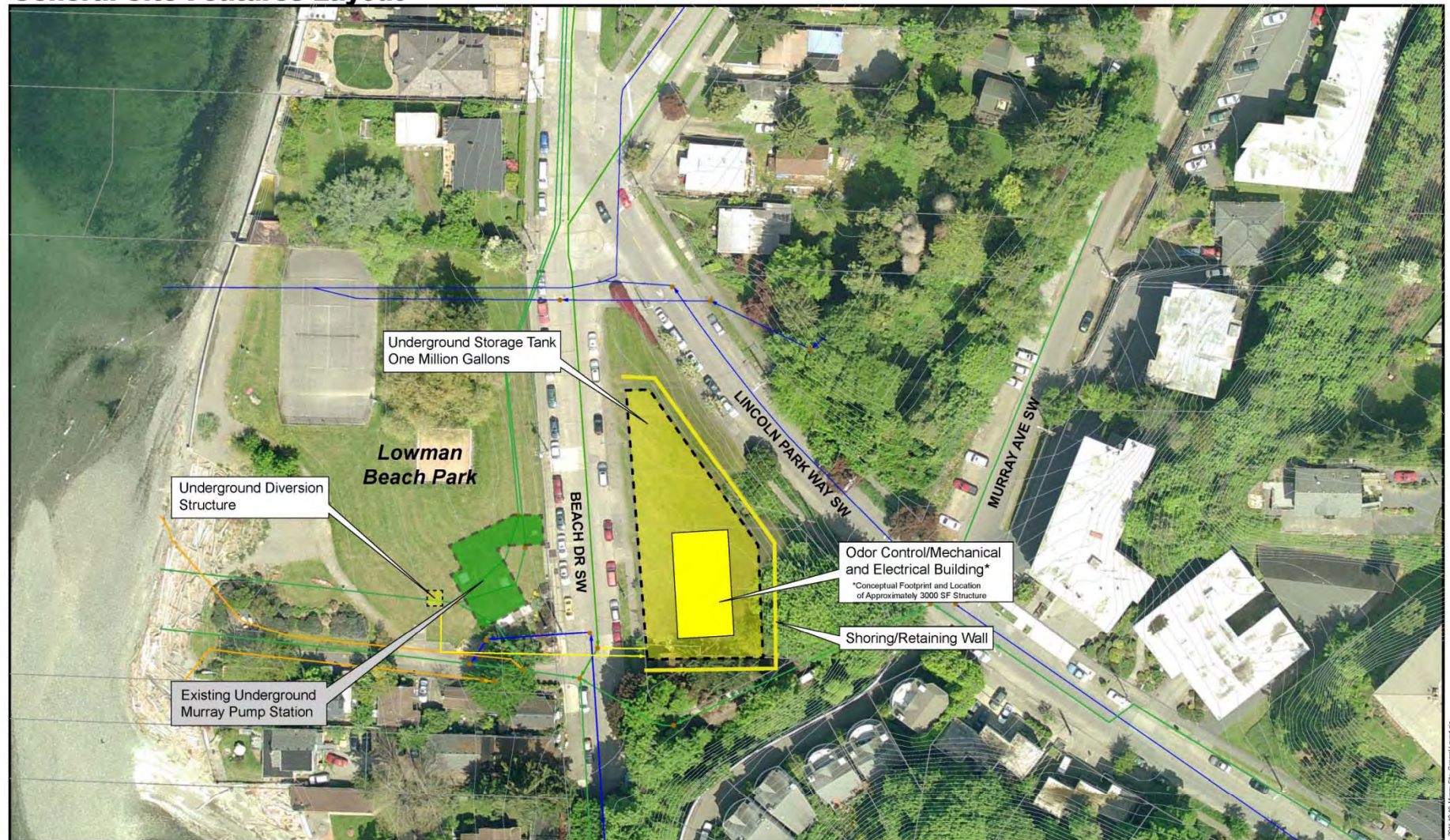
- 992 acres
- Murray CSOs
  - Average 5 events per year
  - Average 5 million gallons per year
- Control requirements
  - 1,000,000 gallons of storage
- Other required elements
  - Odor control
  - Stand-by generator





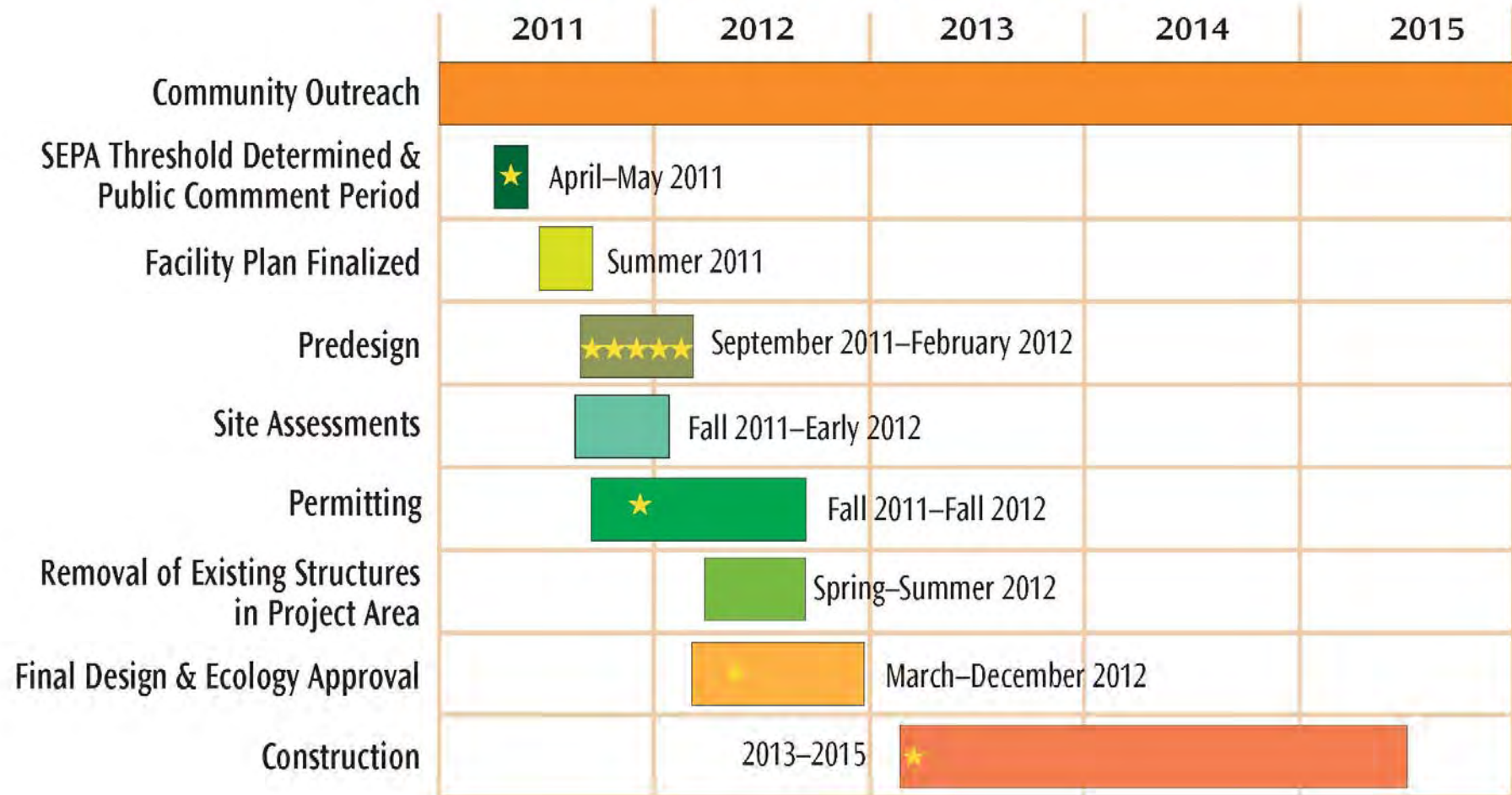
# Murray Basin - CSO

## General Site Features Layout





# MURRAY CSO CONTROL PROJECT TIMELINE



★ = Community Input Period

# MURRAY CSO CONTROL FACILITY

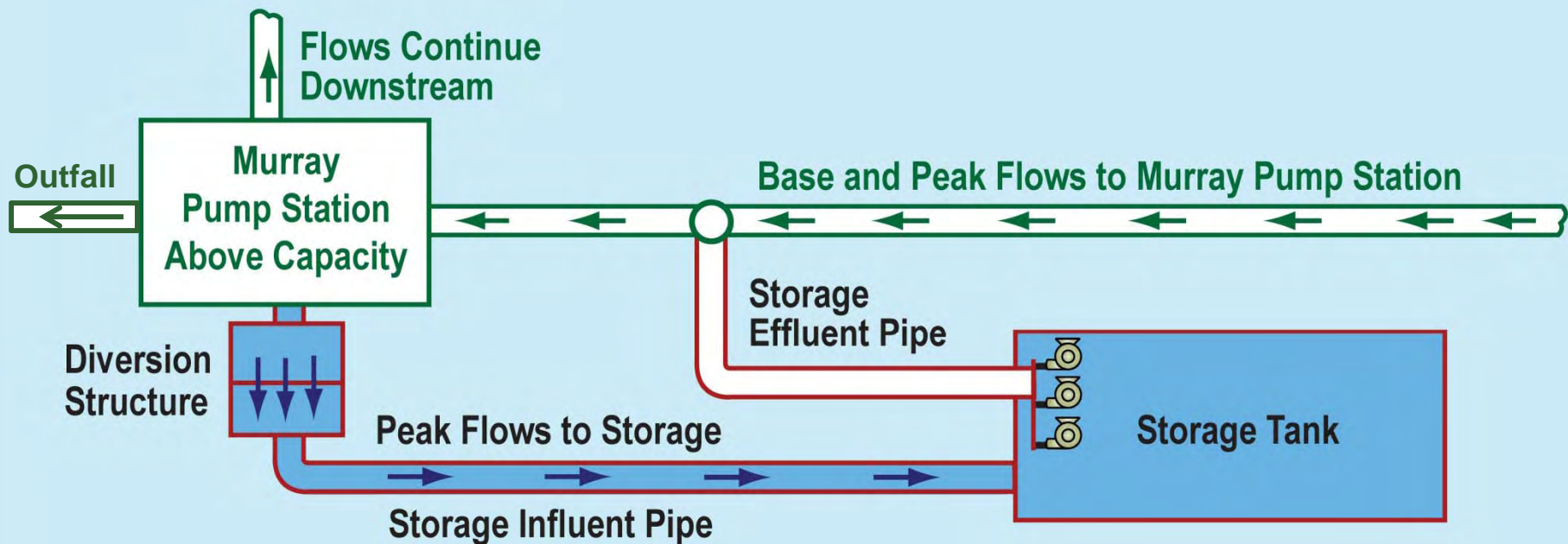




# How the Murray CSO Facility Works



**King County**  
Department of  
Natural Resources and Parks  
**Wastewater Treatment  
Division**



# COMMUNITY PARTICIPATION IN FACILITY DESIGN



# Community Participation in Design

- Public Meetings
  - ▣ Update community on project status
- Design Workshop—Oct 29<sup>th</sup>
  - ▣ Opportunity to provide focused input on design features
- Design Advisory Group
  - ▣ 12 member group representing:
    - Environmental interests
    - Neighborhood association
    - Beach Drive/Lowman Beach Park neighbors
    - Design and aesthetics professional
    - Park users
    - Seattle Parks & Seattle DOT

# Imagining surface design





# How to Stay Involved

- Attend Oct 29<sup>th</sup> design workshop
  - ▣ 9:30am – 3:00pm
  - ▣ Gatewood Elementary, 4320 SW Myrtle Street
- Visit project website:  
[www.kingcounty.gov/environment/wtd/Construction/Seattle/MurrayCSOStorage.aspx](http://www.kingcounty.gov/environment/wtd/Construction/Seattle/MurrayCSOStorage.aspx)
- Contact Design Advisory Group members
- Contact Doug Marsano  
[doug.marsano@kingcounty.gov](mailto:doug.marsano@kingcounty.gov)  
206-684-1235