



Construction underway in Boeing Creek Park New pipe will reduce overflows to Puget Sound



Workers guide a pipe section as the crane lowers it into the trench.

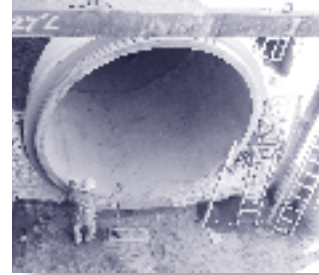
King County's Hidden Lake Sewer Improvement Project will increase sewer system reliability and protect public health and the environment by reducing overflows into Puget Sound.

King County has hired Frank Coluccio Construction Company, or FCCC, to build three projects, shown on the map on Page 3. Construction is expected to run from summer 2006 to early 2009.

Construction in Boeing Creek Park complete by late 2007

Boeing Creek Park will remain open to the public during a sewer improvement construction project now underway in Shoreline. A new 12-foot-diameter underground storage pipe is being built in the park that will temporarily store up to 500,000 gallons of wastewater during large storms. Also being built are two underground concrete vaults to control flows through the large pipe and an odor control facility. The contractor is also re-grading part of the city's stormwater pond.

During construction, there will be a large crane and other equipment in the park. Through October, work hours will be from 7 a.m. to 8 or 8:30 p.m. M-F and Saturday from 9 a.m. to 6 p.m.



Storage pipe sections are stabilized in place before additional sections are added.

A secondary suspension system is used to fit the pipe segments together.



County crews are asking park users to obey trail detour signs and keep pets on leashes. Some areas are fenced off for public safety. Pedestrians, runners and bicyclists should take extra care and watch for construction vehicles and activity.

People should also expect temporary parking and traffic impacts in the area, including intermittent lane closures and detours. Flaggers will assist in directing traffic.

Pedestrians, bicyclists and drivers should use extra caution during construction.

(Continued on page two)

Why do we need facilities in Boeing Creek Park?

- King County's projects to replace aging sewers will protect Puget Sound by limiting overflows.
- Funding from the county will enable the City of Shoreline to make future park improvements.
- The City of Shoreline has made improvements to help flood control in the area. The city's upgrades to the stormwater facility in Boeing Creek Park will reduce erosion and improve water quality in Boeing Creek.

For more information on City of Shoreline projects:

- Visit the Web site at www.cityofshoreline.com/cityhall/projects/boeingcreekpark/index.cfm.
- Or contact **Jon Jordan** at 206-546-1678 or jjordan@ci.shoreline.wa.us



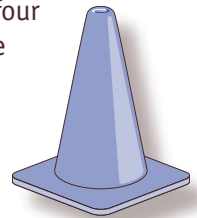
Workers grease pipe ends so they join together smoothly.

New pipe will reduce overflows to Puget Sound *(continued from page one)*

What's next?

About 1,000 feet of smaller sewer pipe will be installed under the streets near the park. Microtunneling will be used to install most of the new sewer lines. A short section of a new local sewer will be installed by trenching in N.W. 175th Street. Work will begin this fall. In spring or summer 2007, 10th Avenue N.W. will be closed for about four months to continue sewer construction. Other roads in the area will remain open, with possible lane closures.

The county will reseed at the end of construction. The city will then complete drainage and park improvements, partially funded by King County.



Hidden Lake Pump Station Replacement

Construction complete: about 2.5 years (2008)

The new pump station will have more capacity, and additional odor control and noise reduction measures will make it a better neighbor. Designed with public input, it will fit in the neighborhood and include native plant landscaping.

Work underway

FCCC, the prime contractor, has cleared the site and begun to construct the foundation for the new pump station, located at the corner of Northwest Innis Arden Way and 10th Avenue N.W.

What's next?

Construction of the new pump station building will take about a year. Workers will then move inside the new building and install equipment, which should take another year. Startup of the new pump station, and demolition of the old station, will take several months and will occur in 2008.



Boeing Creek Trunk Sewer Replacement

Construction complete: about 2 years (2008)

During the Hidden Lake Sewer Improvement project, King County will replace 12,000 feet of the Boeing Creek Trunk Sewer and 5,000 feet of water mains for Seattle Public Utilities.

Work underway

Construction of the first segment of the sewer—along Richmond Beach Drive Northwest, between King County's Richmond Beach Pump Station at N.W. 198th Street and N.W. 197th Street—began in August 2006. Single lane closures along Richmond Beach Drive Northwest may be required to complete this work.

What's next?

Construction of the remainder of the new sewer will begin in fall 2006, and will generally move from Richmond Beach south through Innis Arden. In some areas, water lines will need to be temporarily moved before the new sewer can be installed. Residents will be provided with advanced notice of construction near their properties, including any traffic revisions or water service interruptions.

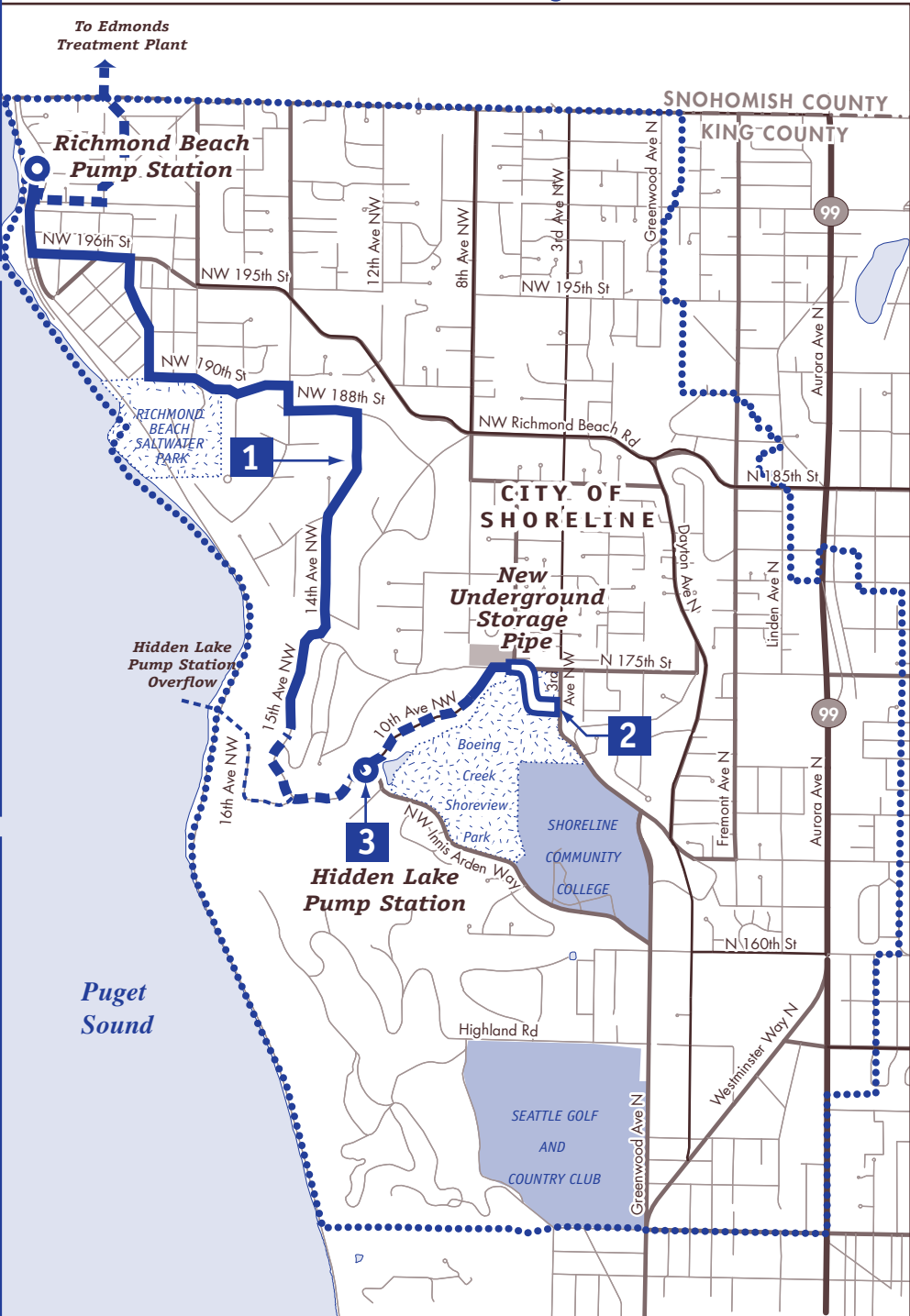
Foundation of new pump station with existing station above.

Construction underway: Hidden Lake Sewer Improvement Project

- 1 Replace part of the Boeing Creek Trunk Sewer**
- Complete construction in about 2 years.
 - Use current sewer route.
 - Replace about 12,000 feet of sewer, including corroded pipe.
 - Replace about 5,000 feet of water mains for Seattle Public Utilities.

- 2 Build a new underground storage pipe**
- Complete construction in about 2 years.
 - Build a 500,000-gallon pipe in Boeing Creek Park.
 - Locate the pipe under and next to the city's existing stormwater facility.
 - Coordinate with the city's stormwater and park improvement projects.
 - Replace about 1,000 feet of pipe in the street.
 - Restore street after construction ends.

- 3 Replace Hidden Lake Pump Station**
- Complete construction in about 2 1/2 years.
 - Use the existing site.
 - Increase the pumping capacity from 4.3 million gallons per day to 6.8 mgd.
 - Design building and landscape to fit the community.
 - Select equipment to optimize system operation and reduce odors and noise.



- # Project component number
- Richmond Beach Wastewater Service Area
- - - - - Overflow to Puget Sound
- ▬ Underground storage pipe

- - - - - Existing sewer line
- ▬ Boeing Creek Trunk Sewer Line Replacement Area
- Road
- Water body



Produced by: DNRP GIS and WLR Visual Communications & Web Units File name: 0609H-LakeMap.apr | pre, mdev, skrau



King County

Department of Natural Resources and Parks

Wastewater Treatment Division

201 S. Jackson St., KSC-NR-0505
Seattle, WA 98104-3855

PRESORTED
FIRST CLASS
U.S. POSTAGE
PAID
SEATTLE WA
PERMIT NO. 836

Hidden Lake Pump Station & Sewer Improvement Project Construction Update Summer 2006



Creating Resources from Wastewater

More information?

- Call the 24-hour construction hotline at 206-205-5968. A staff person will be paged and will respond promptly.
- Contact Jennifer Kauffman, King County Wastewater Treatment Division, at 206-263-6029 or jennifer.kauffman@metrokc.gov. Ask to be added to the project mailing list or e-mail list.
- Visit the project Web site at <http://dnr.metrokc.gov/wtd/projects/hiddenlake.htm>

Being a good neighbor during construction

King County will work with the community throughout the course of the project to address suggestions and concerns. You can expect:

- Advance notice of work – mail, e-mail, phone, door hangers
- Project update fliers and newsletters
- 24-hour construction hotline
- One-on-one problem solving with directly impacted residents
- Community group briefings
- Close coordination with city

Alternative Formats

206-263-6029 or 711 (TTY)

Printed on recycled paper. Please recycle.