



Site tour in Boeing Creek Park, location of the new underground storage pipe



New sewer through park

Construction to begin in June 2006

King County protects public health and the environment by conveying and treating the region's wastewater. Many of King County's wastewater facilities in Shoreline are more than 40 years old, lack needed capacity, and do not meet current design standards. To ensure the safety and reliability of the sewer system in Shoreline, the county is replacing the Hidden Lake Pump Station and part of the Boeing Creek Trunk Sewer, and building a new underground storage pipe in Boeing Creek Park (see map page 3).



To minimize community impacts and make the project more cost-effective, King County has combined the three Hidden Lake sewer improvement projects into a single, \$21 million construction contract. This means that all three projects will overlap during the 2¹/₂-year construction period, from June 2006 – 2009.

King County has selected Frank Coluccio Construction Company as the project contractor. In May, Coluccio will submit a detailed schedule and description of the planned sequence of work. King County will then begin notifying community members about construction details and time frames.

Why do we need the Hidden Lake project?

BEFORE CONSTRUCTION...



Existing Hidden Lake Pump Station

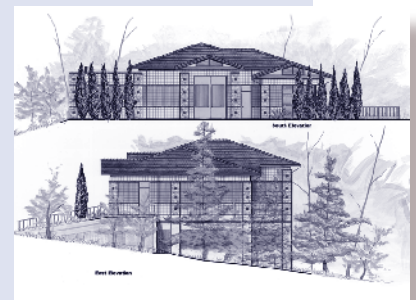
Existing facilities:

- are more than 40 years old
- have operating problems
- need more capacity
- overflow into Puget Sound about three times a year
- do not meet current code and county design standards

AFTER CONSTRUCTION...

New facilities:

- will be safe and reliable and will last 50+ years
- will be better neighbors with less noise and improved odor control
- will enable community improvements, such as new water mains for upgraded water/fire service
- will include repaved streets, site restoration and landscaping



New Hidden Lake Pump Station



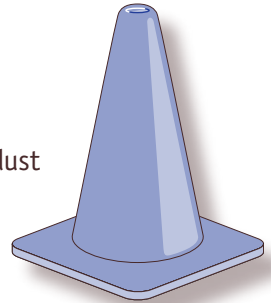
A trenching project in progress.



Trenching to install a new sewer.

What will be done to minimize impacts?

- Develop a traffic control plan to keep roadways from being overwhelmed
- Establish work hour limits
- Maintain emergency access at all times
- Encourage contractor parking off-site
- Protect the environment (sediment, erosion and dust control)
- Keep parks open during construction
- Give neighbors advance notice of planned work



What should you expect?

- In April and May, county and construction staff will work on public property, taking pictures of preconstruction conditions.
- Short-term construction impacts (noise, dust, traffic), especially if you live directly adjacent to the construction area.
- Construction noise and activity between 7 a.m. and 10 p.m. weekdays. A longer work day means the work will be done more quickly.
- Limited work at night, when wastewater flows are lowest.
- Most construction will take place in public rights-of-way or on publicly owned property.
- County staff will be available 24 hours a day to respond to questions and concerns.

What work will be done in front of MY house?

King County has developed engineering designs that specify:

- **WHAT** we need to build - the type and size of the new facilities
- **WHERE** they will be located

We've selected who will build the new facilities: a team of contractors led by Coluccio.

We don't know yet:

- **HOW** the contractor will build the facilities (what size equipment, whether temporary street closures will be required, whether mailboxes or plantings in the public right-of-way will be affected.)
- **WHEN** the contractor will be working in a specific location

We should know the details this spring and will inform directly impacted residents at that time. Property owners who live next to the construction areas will receive a letter with more detailed information on work schedules and potential impacts.

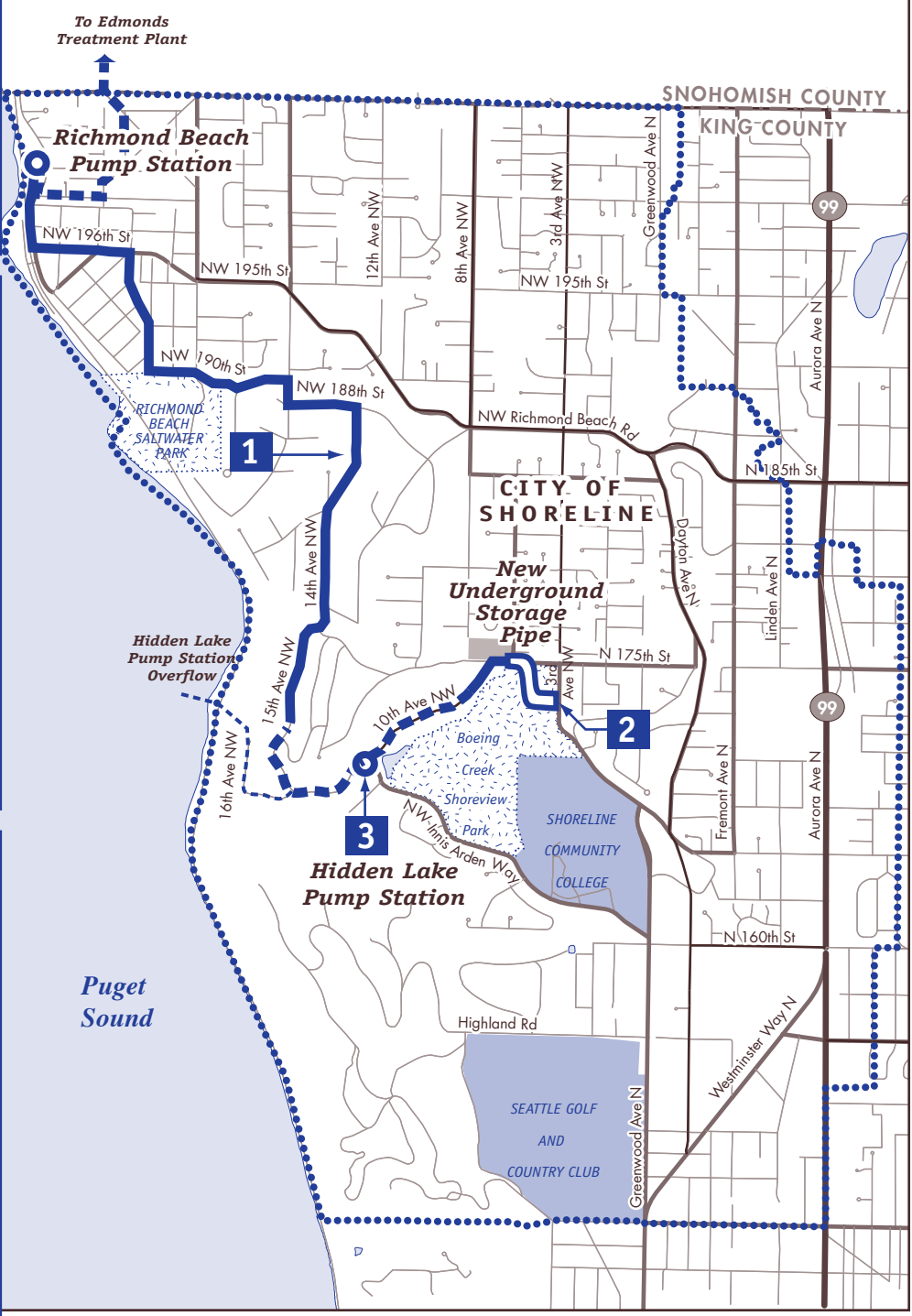
Creating Resources from Wastewater

Hidden Lake Pump Station and Sewer Improvement Project

- 1 Replace part of the Boeing Creek Trunk Sewer**
- Complete construction in about 2 years.
 - Use current sewer route.
 - Replace about 12,000 feet of sewer, including corroded pipe.
 - Replace about 5,000 feet of water mains for Seattle Public Utilities.

- 2 Build a new underground storage pipe**
- Complete construction in about 2 years.
 - Build a 500,000-gallon pipe in Boeing Creek Park.
 - Locate the pipe under and next to the city's existing stormwater facility.
 - Coordinate with the city's stormwater and park improvement projects.
 - Replace about 1,000 feet of pipe in the street.
 - Restore street after construction ends.

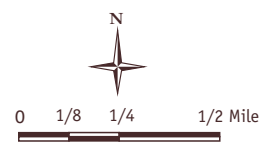
- 3 Replace Hidden Lake Pump Station**
- Complete construction in about 2 1/2 years.
 - Use the existing site.
 - Increase the pumping capacity from 4.3 million gallons per day to 6.8 mgd.
 - Design building and landscape to fit the community.
 - Select equipment to optimize system operation and reduce odors and noise.



Produced by: DNRP GIS and WLRD Visual Communications/Web Unit File name: 0604WTDI-HL.mapa1-1pre.mdev.skau

- 1** Project Component and Number
- Road
 - Richmond Beach Wastewater Service Area
 - - - Overflow to Puget Sound

- - - Existing Sewer Line
- Boeing Creek Trunk Sewer Line Replacement Area
- Water body





King County

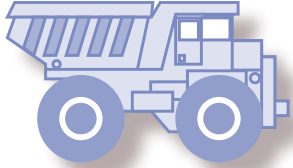
Department of Natural Resources and Parks

Wastewater Treatment Division

201 S. Jackson St., KSC-NR-0505
Seattle, WA 98104-3855

PRESORTED
STANDARD
U.S. POSTAGE
PAID
SEATTLE WA
PERMIT NO. 836

Hidden Lake Pump Station & Sewer Improvement Project Construction Update



Alternative Formats

206-263-6029 or 711 (TTY)

Printed on recycled paper. Please recycle.

More information?

- Call the 24-hour construction hotline at 206-205-5968. A staff person will be paged and will respond promptly.
- Contact Jennifer Kauffman, King County Wastewater Treatment Division, at 206-263-6029 or jennifer.kauffman@metrokc.gov. Ask to be added to the project mailing list or e-mail list.
- Visit the project Web site at <http://dnr.metrokc.gov/wtd/projects/hiddenlake.htm>

Being a good neighbor during construction

King County will work with the community throughout the course of the project to address suggestions and concerns. You can expect:

- Advance notice of work – mail, e-mail, phone, door hangers
- 24-hour construction hotline
- One-on-one problem solving with directly impacted residents
- Community group briefings
- Close coordination with city

Projected Hidden Lake Sewer Improvement Project Timeline

