



# FREMONT SIPHON

replacement project



King County  
Department of  
Natural Resources and Parks  
Wastewater Treatment Division

Queen Anne Site Project Update

October 20, 2016

## W. Ewing St. and Ship Canal Trail closed occasionally during week of Oct. 24

King County's contractor will remove temporary pipes underneath W. Ewing St. and the Ship Canal Trail during the week of Oct. 24.

These pipes helped control groundwater while the new siphons were built. Now that the new siphons are working, the temporary pipes are no longer needed.

W. Ewing St. and the Ship Canal Trail will close occasionally during the week of Oct. 24th while this work occurs. The trail will remain open until the work on W. Ewing St. is finished.

W. Ewing St. traffic can detour to the W. Ewing Alley or W. Nickerson St.

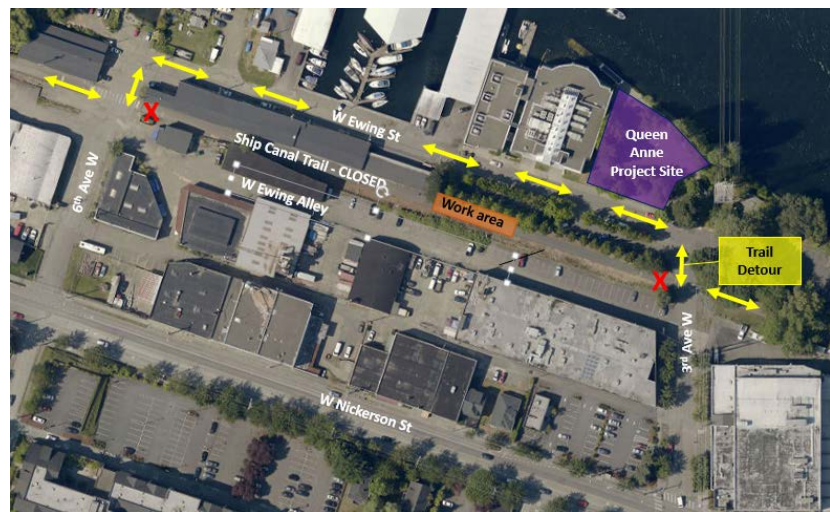
Trail traffic can detour to W. Ewing St.

### What to expect

- Work in W. Ewing St. and Ship Canal Trail during the week of Oct. 24
- Work on weekdays from 7 a.m. – 6 p.m.
- Traffic control personnel and detour signs directing traffic away from the work areas
- W. Ewing St. closed starting Monday Oct. 24 – traffic detoured to W. Ewing Alley
- Ship Canal Trail closed later in the week – trail traffic detoured to W. Ewing St.



*Traffic can detour to the W. Ewing Alley when W. Ewing St. is closed*



*Trail traffic detours to W. Ewing St. when the Ship Canal Trail is closed*

### Stay safe!

Please do not engage workers at the site. You can ask questions or share concerns about the project 24 hours a day by calling the project information line: **206-205-5428**.

### For more information:

Call the 24-hour project information line: 206-205-5428  
Visit: [www.kingcounty.gov/fremontsiphon](http://www.kingcounty.gov/fremontsiphon)  
Email: [doug.marsano@kingcounty.gov](mailto:doug.marsano@kingcounty.gov)

**ALTERNATIVE FORMATS AVAILABLE**  
**206-477-5371 / 711 (TTY RELAY)**