



FREMONT SIPHON

replacement project



King County
Department of
Natural Resources and Parks
Wastewater Treatment Division

Fremont Site Project Update

February 29, 2015

Corner of 2nd Ave NW and NW Canal Street closed

The corner of 2nd Avenue NW and NW Canal Street will be closed on **February 29 and March 1** while the contractor conducts utility investigations to prepare for relocating a Seattle City Light electrical line. Seattle City Light will relocate the electrical line in the next few weeks, which will require an additional closure. We will update you when Seattle City Light has scheduled this work.

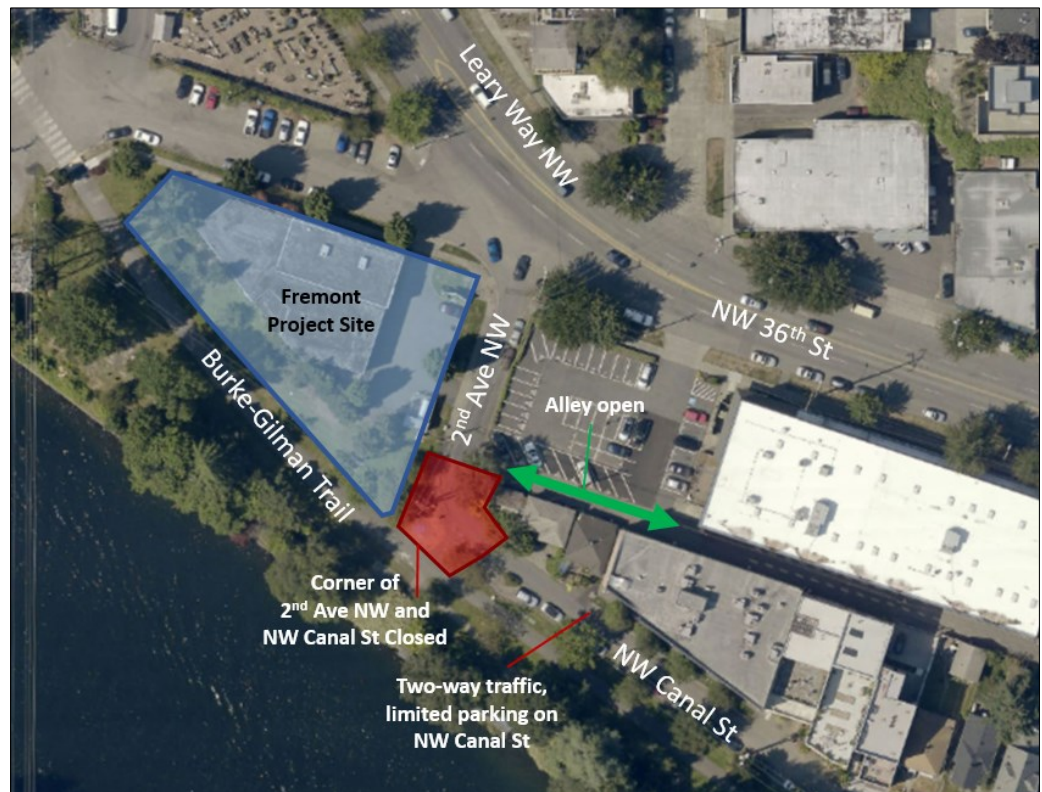
The contractor will confirm the current location of the electrical line by drilling small holes and using a vacuum truck to remove soil from each hole at the corner of 2nd Avenue NW and NW Canal Street. Expect increased noise from pavement breaking and operation of the vacuum truck.

What to expect

- Two-way traffic, limited parking on NW Canal Street between 2nd Avenue NW and 1st Avenue NW
- Access to the alley behind NW Canal Street open via 2nd Avenue NW
- Burke-Gilman Trail users should access the trail and Fremont Canal Park from 3rd Avenue NW or 1st Avenue NW
- Increased noise and activity from pavement breaking and vacuum truck operation
- Work from 7 a.m. to 6 p.m. weekdays

Stay safe!

Please avoid the project area and sidewalks on NW 36th Street next to the project area. Please do not engage individuals working at the site. Community members can ask questions or share concerns about the project 24 hours a day by calling the project information line: 206-205-5428.



For more information:

Call the 24-hour project information line: 206-205-5428
Visit: www.kingcounty.gov/fremontsiphon
Email: doug.marsano@kingcounty.gov

ALTERNATIVE FORMATS AVAILABLE
206-477-5371 / 711 (TTY RELAY)