



Community Meeting

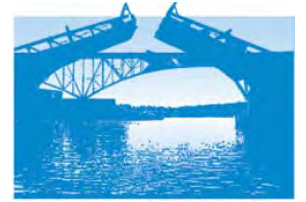
November 20, 2013



MWH

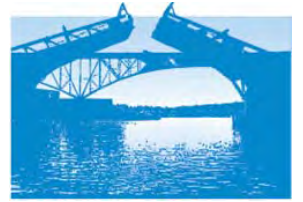
JACOBS ASSOCIATES

Meeting purpose

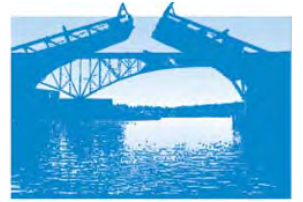


- ▶ View the final design for the Fremont site and new odor control building
- ▶ View the public art design concept and meet the artist
- ▶ Learn about final design, construction areas, activities and traffic impacts
- ▶ Discuss what to expect during construction

Agenda

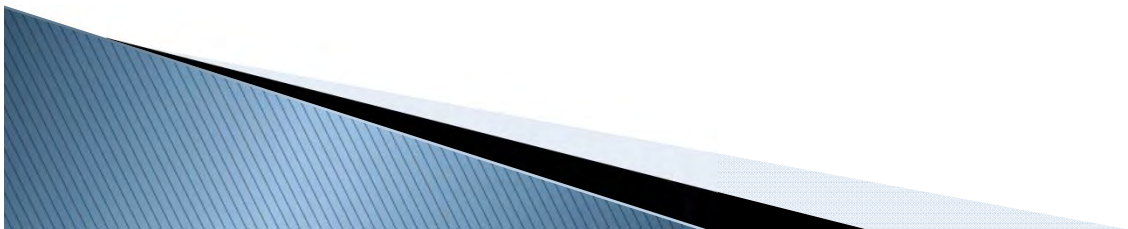


6:00 pm	Presentation
6:30 pm	Question and answer session
6:50 pm	Seattle Public Utilities presentation
7:00 pm	Question and answer session
7:10 pm	Open house: one-on-one discussions with project team



Project Overview

Will Sroufe
Project Manager



King County Wastewater System Map

Legend:

- Flow Direction:**
 - Red line: Flow Direction
 - Blue line: Sewer Conduit
 - Green line: Potable Water
 - Yellow line: Treated Water
- Wastewater Treatment Plant:**
 - Red circle: Wastewater Treatment Plant
 - Blue circle: Wastewater Treatment Facility
- Regulator Station:**
 - Green square: Regulator Station
 - Yellow triangle: Regulator Station
 - Blue square: Regulator Station
- Other Symbols:**
 - Black circle: Airy Station
 - Black square: Airy Station
 - Black triangle: Airy Station
 - Black circle: Airy Station
 - Black square: Airy Station
 - Black triangle: Airy Station
 - Black circle: Airy Station
 - Black square: Airy Station
 - Black triangle: Airy Station
- Other Symbols:**
 - Black circle: Airy Station
 - Black square: Airy Station
 - Black triangle: Airy Station
 - Black circle: Airy Station
 - Black square: Airy Station
 - Black triangle: Airy Station
 - Black circle: Airy Station
 - Black square: Airy Station
 - Black triangle: Airy Station

Scale: 0 to 10 Miles

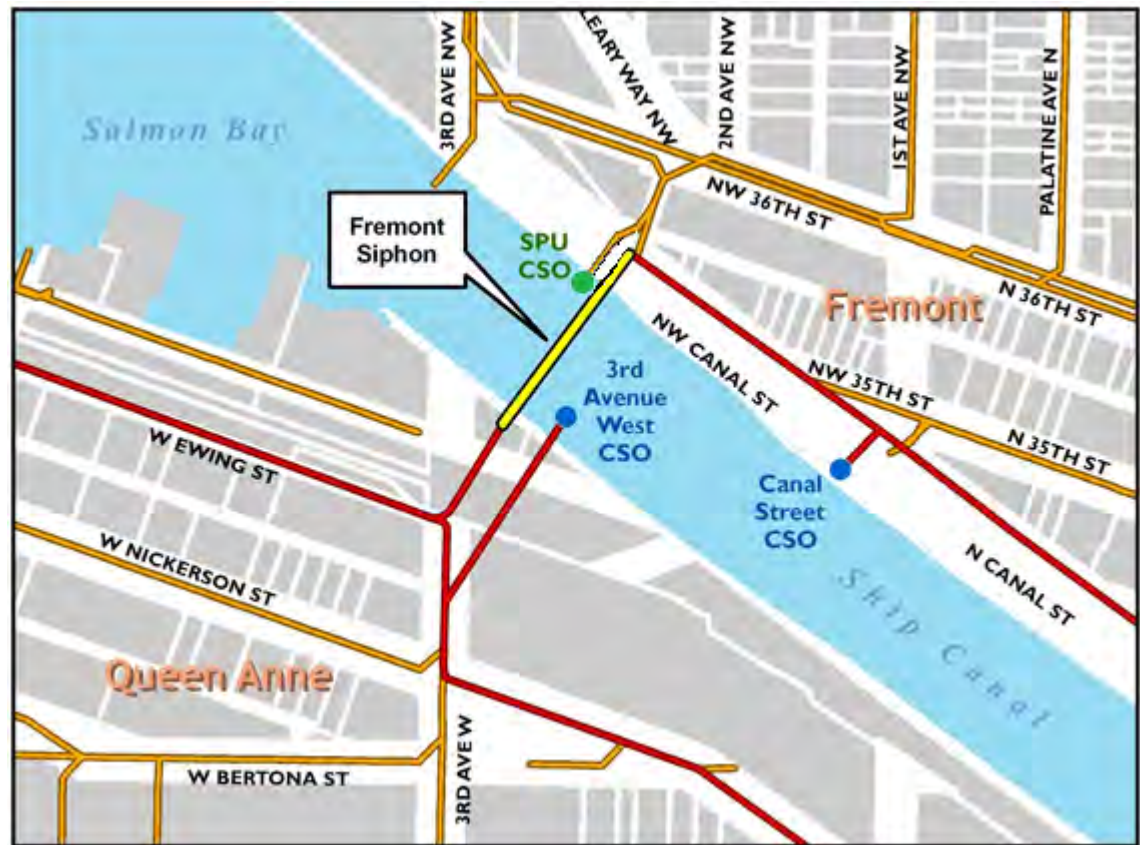
North Arrow: Points North

Map Date: May 2008

Overview: wastewater conveyance in the project area



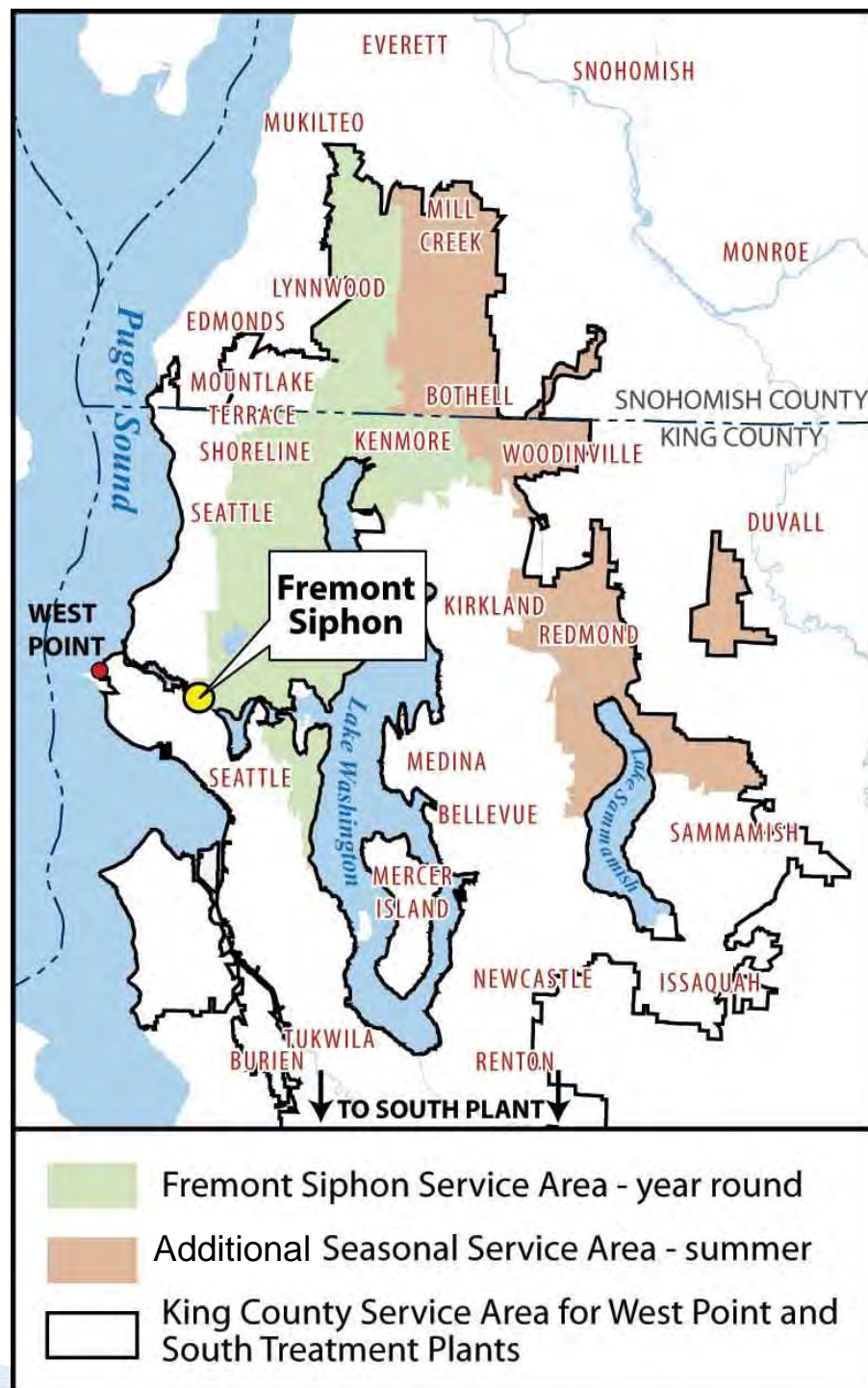
- ▶ Seattle Public Utilities collects most residential and commercial flow
- ▶ King County receives flow from SPU's system
- ▶ Both SPU and King County have CSO facilities that discharge into the Ship Canal



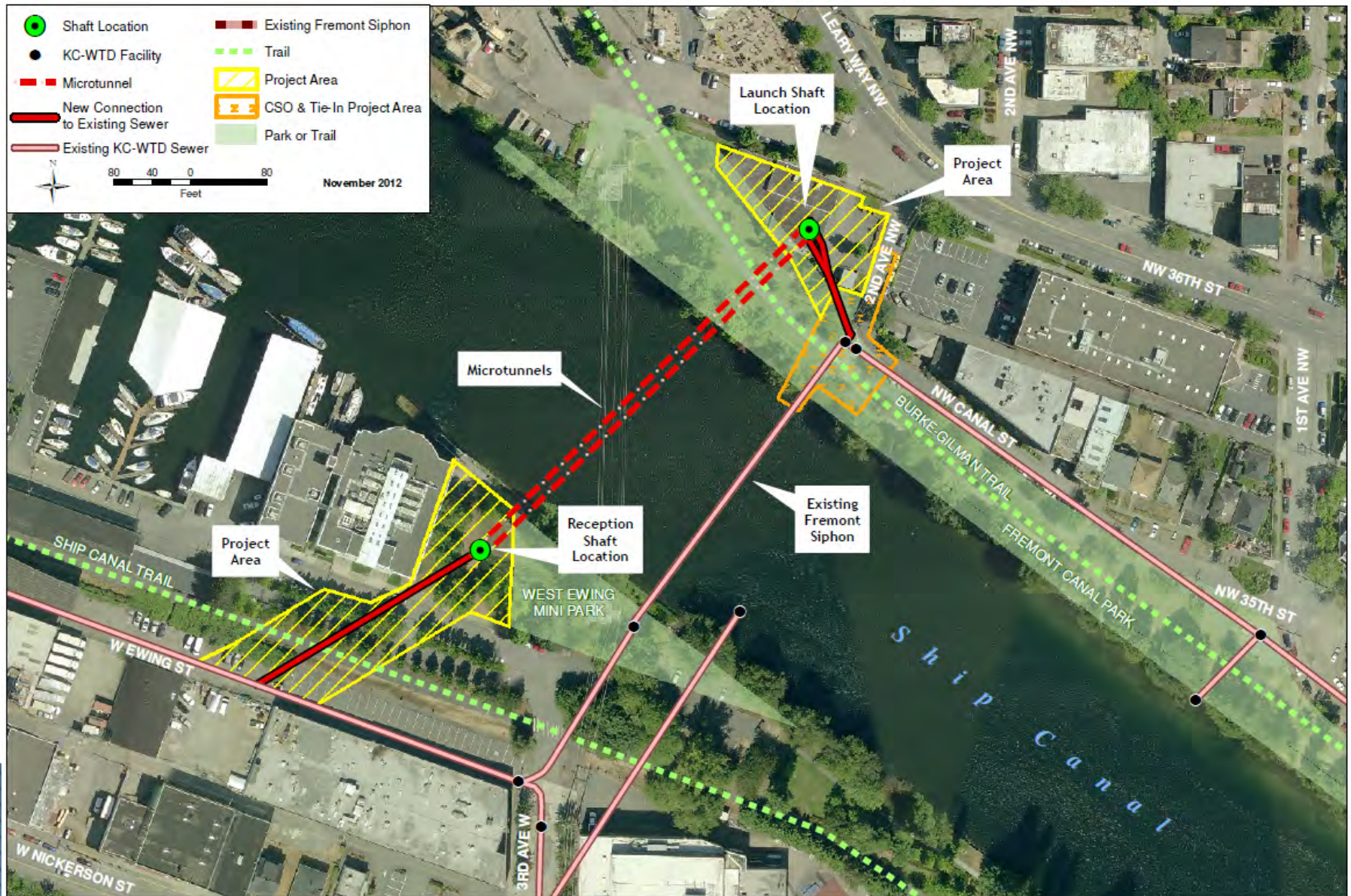
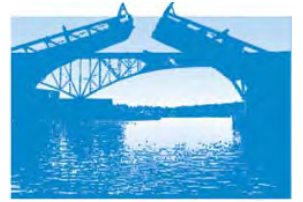
- King County sewer lines
- Seattle Public Utilities sewer lines

The Fremont Siphon is a critical system component

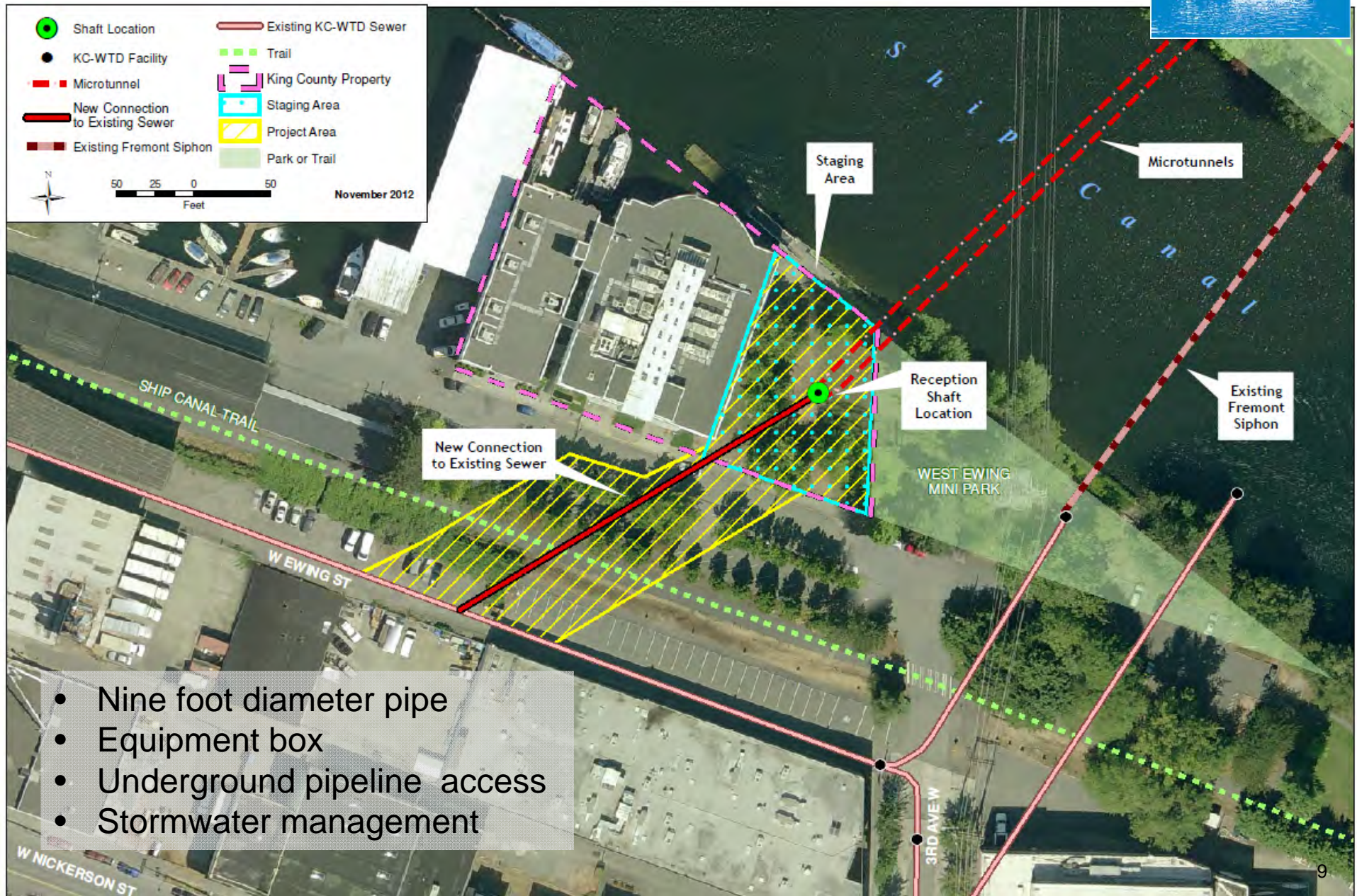
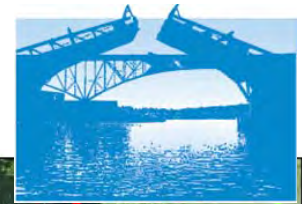
- ▶ Serves 60 square miles in winter, 114 in summer
- ▶ Carries half the wastewater going to the West Point Treatment Plant
- ▶ Needs replacement after 100 years of service



Project Area

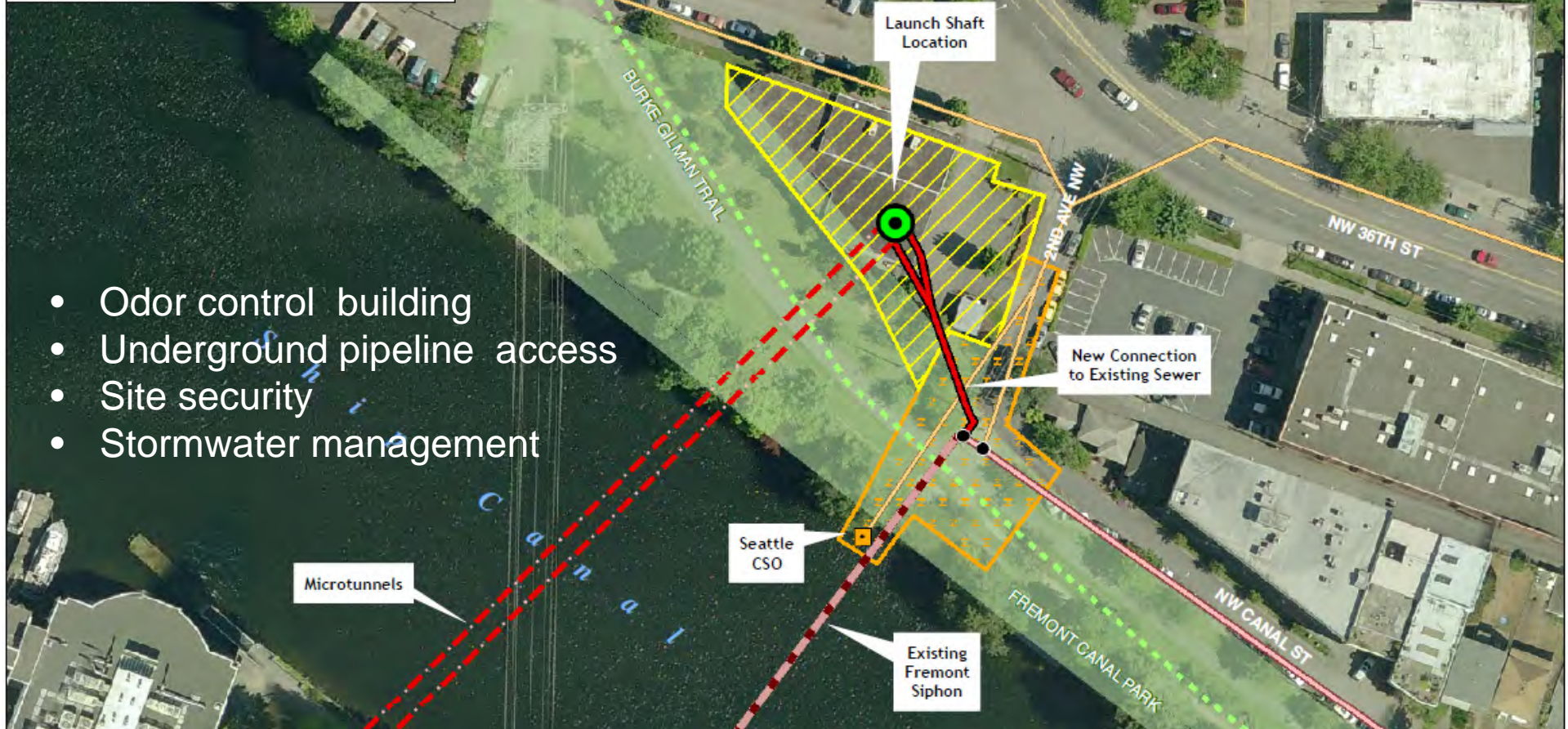
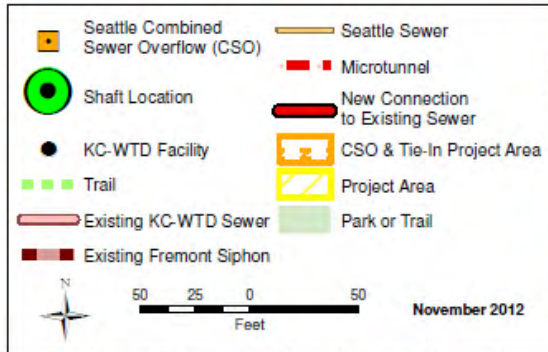
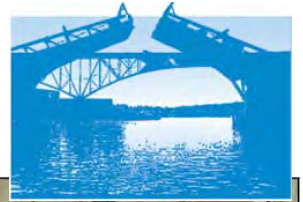


Queen Anne Project Area

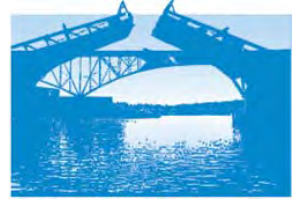


- Nine foot diameter pipe
- Equipment box
- Underground pipeline access
- Stormwater management

Fremont Project Area



- Odor control building
- Underground pipeline access
- Site security
- Stormwater management

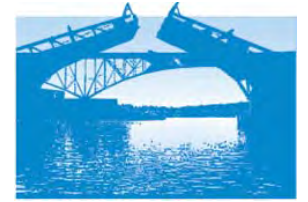


Fremont Facility Site Design

Michael Popiwny



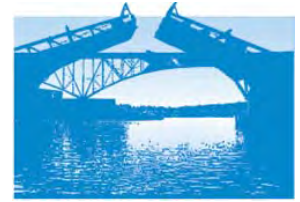
You helped shape the design!



- ▶ January 2013 workshop to understand community vision
- ▶ Project team refined the site layout and design based on this input
- ▶ March 2013 open house to weigh in on two design options



How we listened to your input



- ▶ Removed driveway on 2nd Ave NW
- ▶ Incorporated building wall as part of fence
- ▶ Minimized fencing footprint
 - ▶ Added mow strip along south side of property



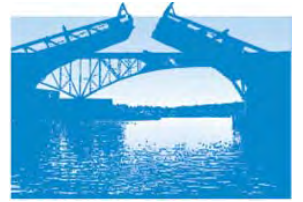
How we listened to your input (continued)

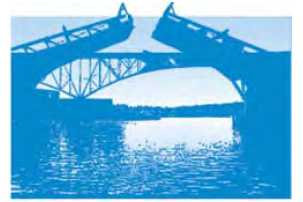


- ▶ Minimized onsite lighting
- ▶ Minimized the pavement footprint
- ▶ Using permeable pavement and grass pavement



Corner of NW 36th and 2nd Ave NW

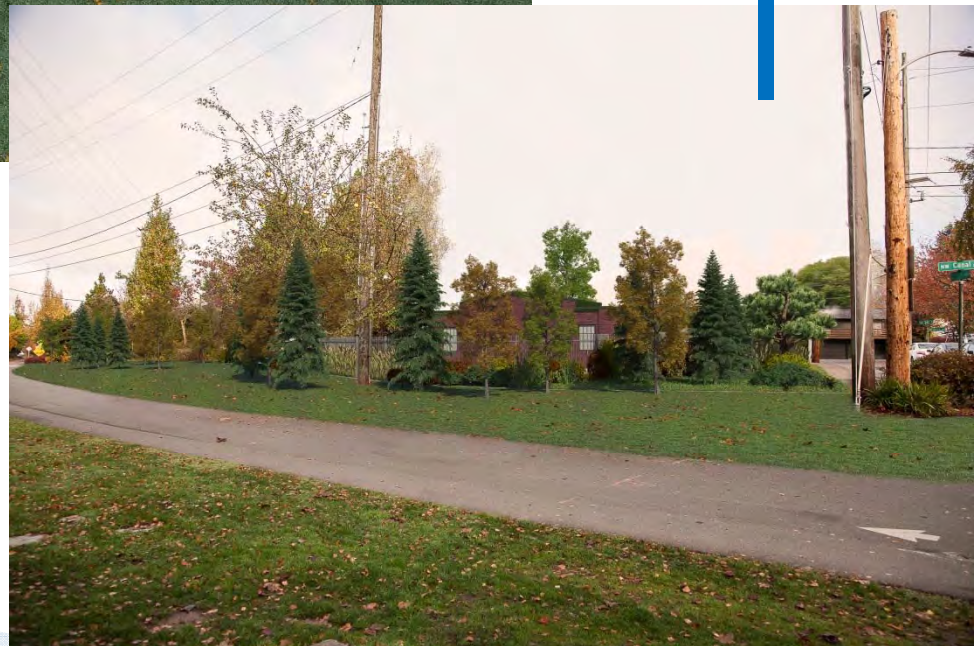


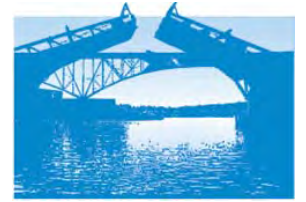


View from Fremont Canal Park



Rain garden in the
northwest corner





Construction Overview

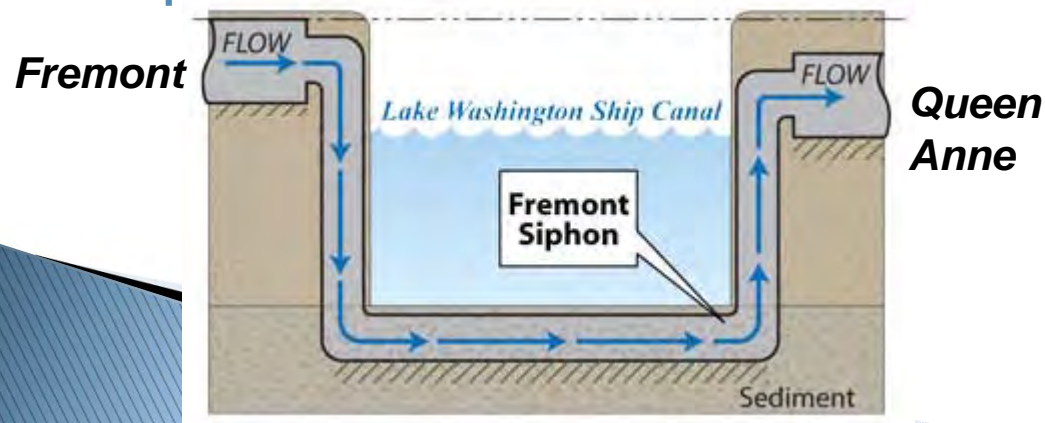
Jeremy Johnson
Consultant Project Engineer
Jacobs Associates



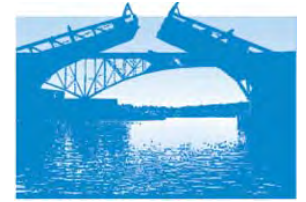


How the siphons will be built

- ▶ Microtunnel under the Ship Canal
- ▶ Two shafts needed to:
 - Launch microtunnel machine in Fremont
 - Retrieve microtunnel machine in Queen Anne
 - Install pipes to complete siphon



Work Activities in Fremont

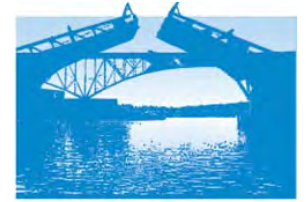


- ▶ Remove existing building
- ▶ Excavate shaft
- ▶ Microtunnel and operate soil separation facility
- ▶ Connect new siphon to existing sewer
- ▶ Replace and reconfigure the City's CSO outfall
- ▶ Build odor control structures
- ▶ Restore project area



Excavating the shaft for the Ballard Siphon Replacement Project

Work Activities in Queen Anne



Work focused on King County's Environmental Labs property and right-of-way:

- ▶ Excavate shaft
- ▶ Connect new siphon to existing sewer
- ▶ Decommission existing siphon
- ▶ Restore project area

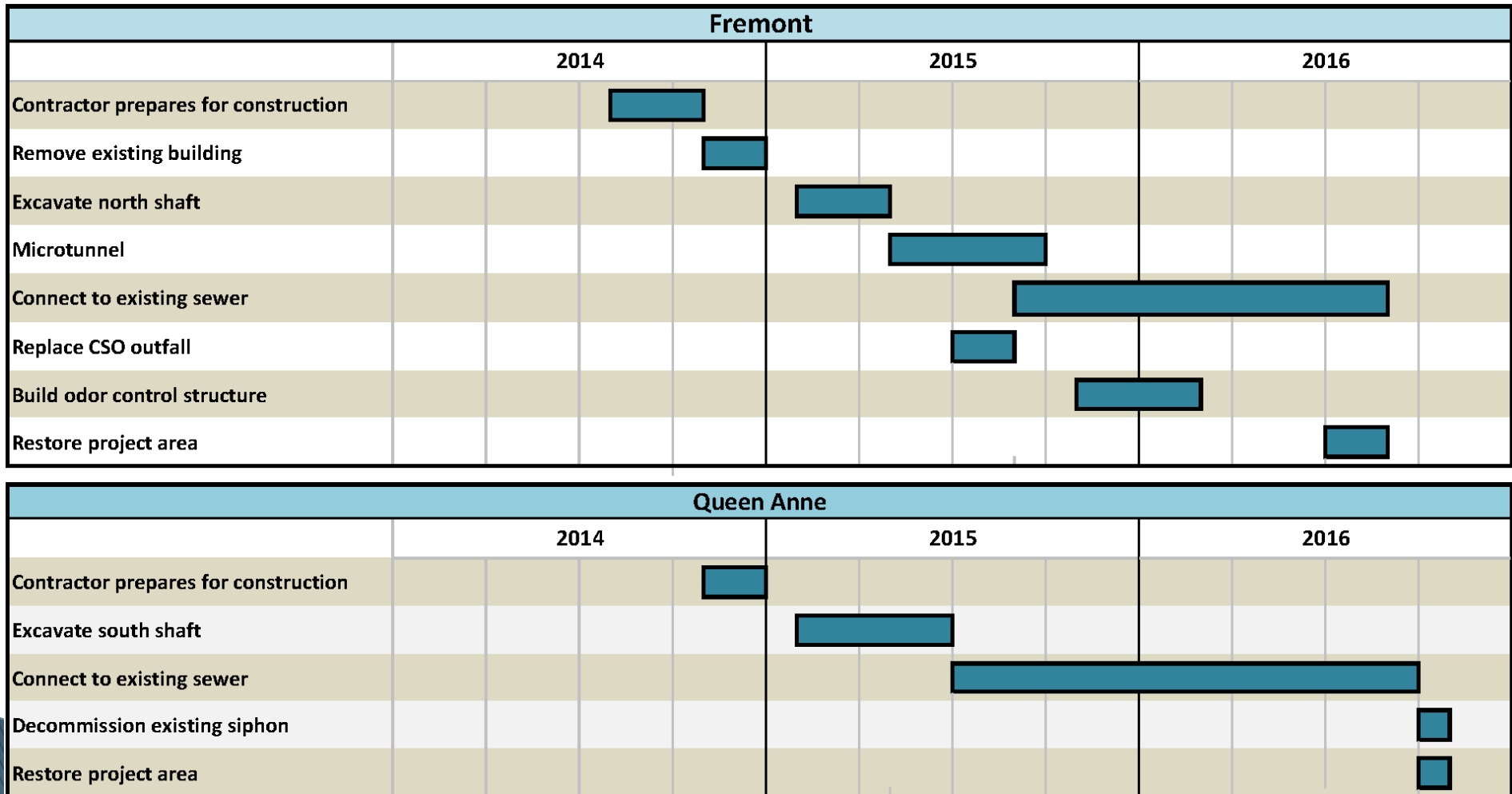


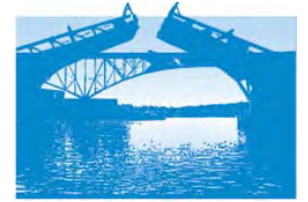
Connecting the new siphon to the existing sewer for the Ballard Siphon Replacement Project

Proposed construction schedule



Construction contractor expected to be hired in mid-2014



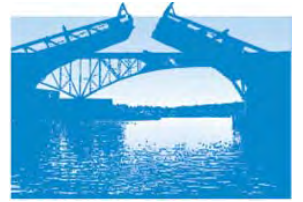


During Construction

Jeff Schmidt
Consultant Project Manager
MWH



What to expect during construction

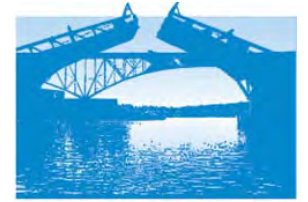


- ▶ Work will typically occur during weekday, daytime hours
- ▶ Noise, dust, and vibration
- ▶ Work crews, trucks and heavy machinery on site
- ▶ Increased truck traffic
- ▶ Traffic and pedestrian detours



24-hour construction hotline and advance notification of activities

Traffic & pedestrian detours



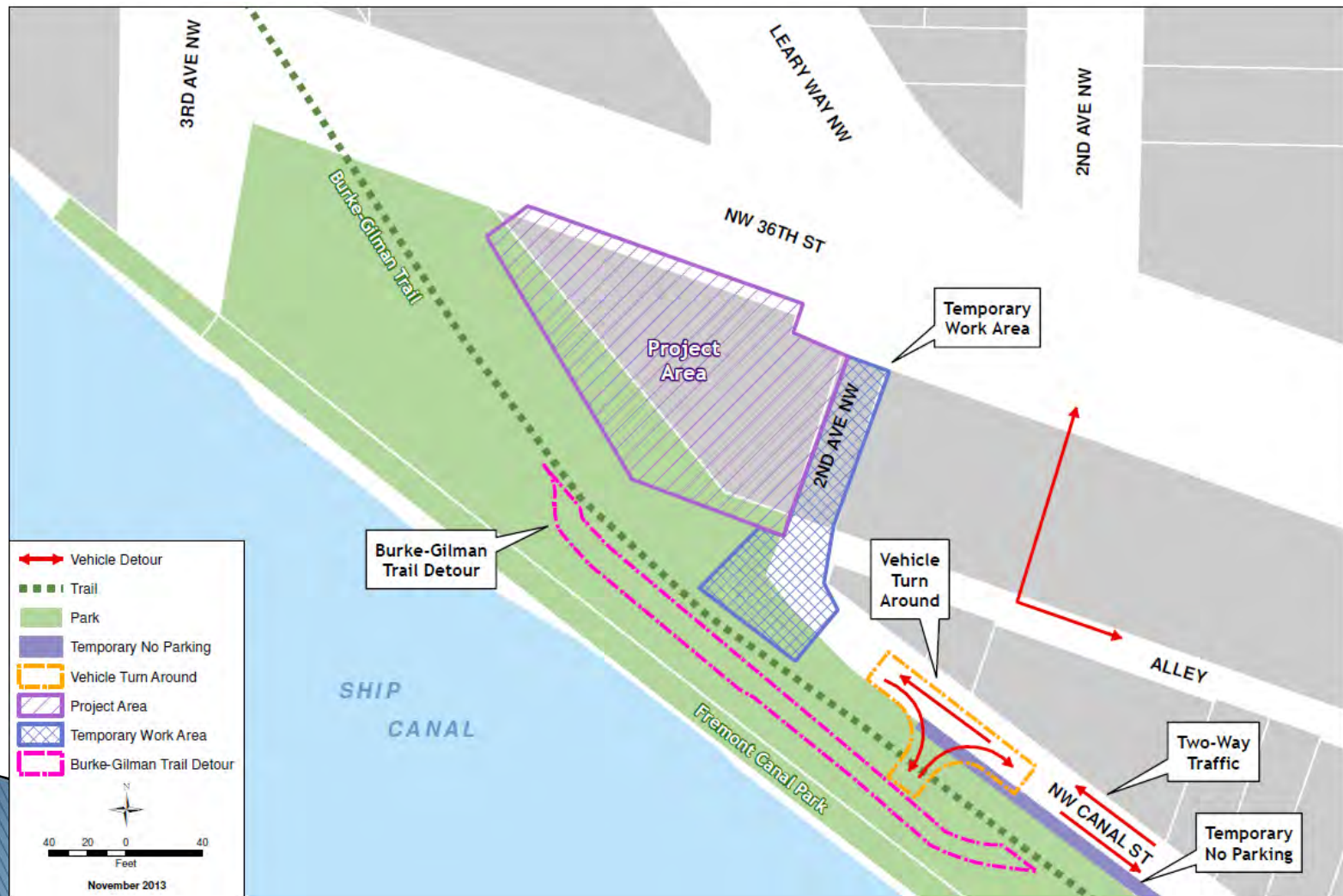
- ▶ Burke–Gilman Trail access maintained throughout project
- ▶ For the majority of the project, current traffic patterns will be maintained
- ▶ For short periods of time, some traffic modifications will be necessary



Fremont: Traffic & pedestrian detours

Stage 1: Prepare existing pipe for construction

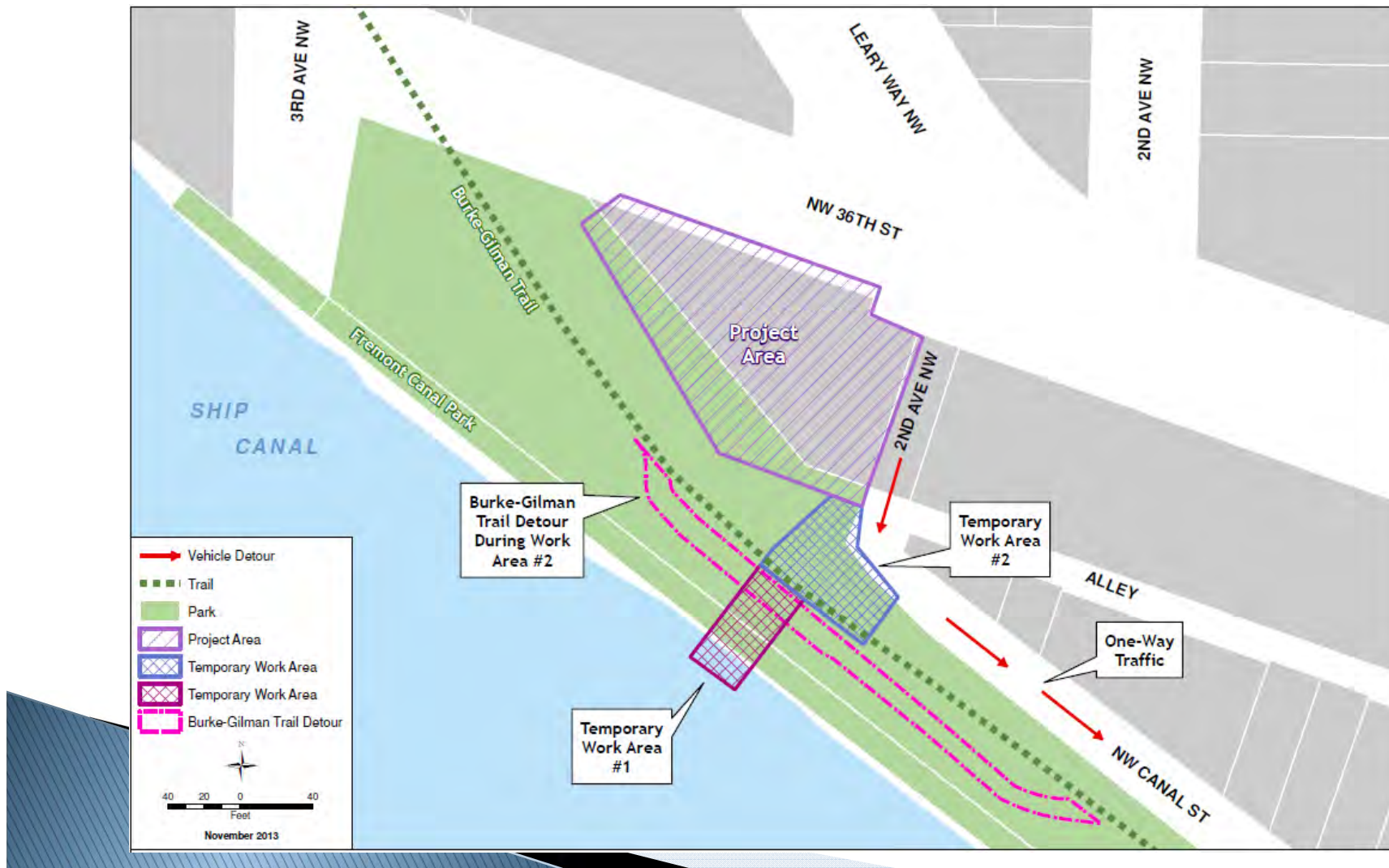
- Duration: Approx. 1 month, Anticipated summer 2015



Fremont: Traffic & pedestrian detours

Stage 2: CSO Replacement

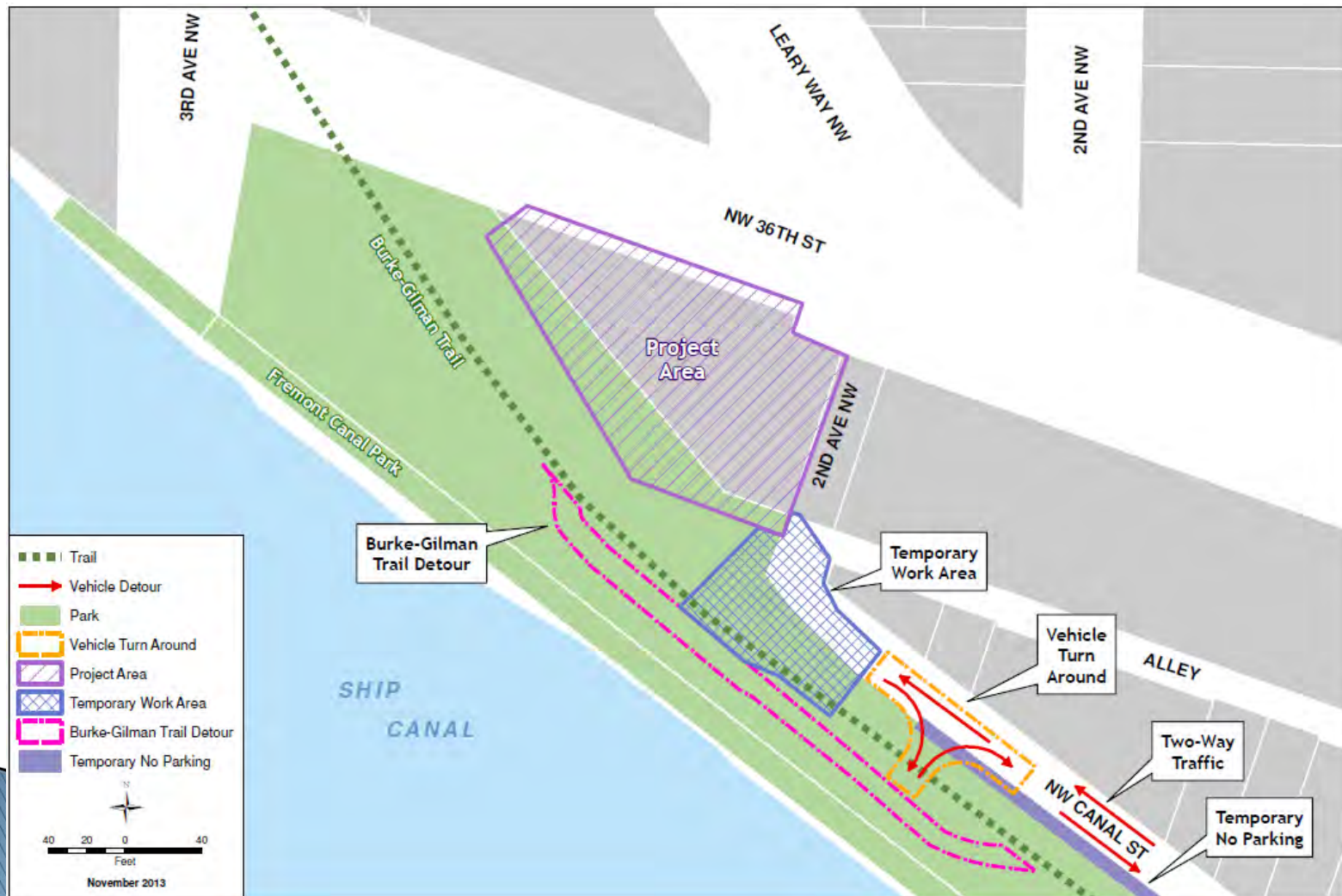
- ▶ Duration: Approx. 4 months, Anticipated Summer 2015



Fremont: Traffic & pedestrian detours

Stage 3: Interceptor tie-in

- Duration: Approx. 4 months, Anticipated Summer 2015 or 2016



Queen Anne: Traffic & pedestrian detours

Stage 1: Pipe installation

- Duration: Approx. 1 month, Anticipated 2015



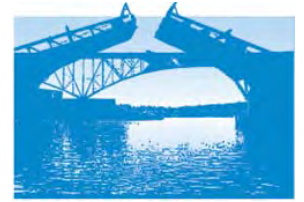
Queen Anne: Traffic & pedestrian detours

Stage 2: Connection to existing sewer

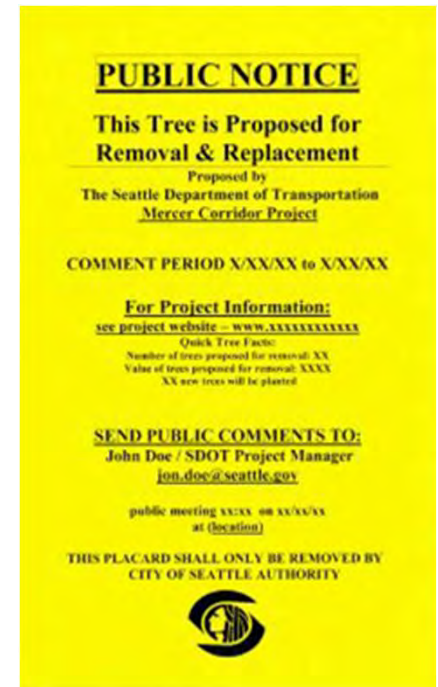
- ▶ Duration (Ship Canal Trail): Approx. 1 month; Anticipated 2015
- ▶ Duration (W Ewing St): Approx. 3 months; Anticipated 2016

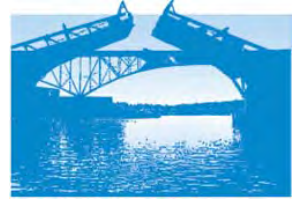


Restoration and Mitigation



- ▶ King County WTD carries out restoration and mitigation on all Capital Improvement Projects
- ▶ Environmental mitigation
- ▶ Stormwater management
- ▶ Replace trees and restore landscaping in construction areas
 - 25 trees affected in Fremont
 - 21 trees affected in Queen Anne

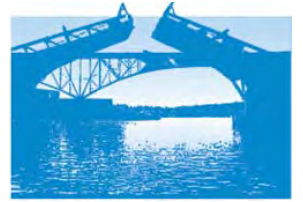




Next steps and staying in touch

Adair Muth
Community Relations

What's next?



December 2013:	Final design documents complete
Early 2014:	Contract out for bid
Spring 2014:	Contractor hired
Summer 2014:	Pre-construction community meeting
Summer 2014:	Construction begins

Staying in touch



Prior to construction:

- ▶ Post-design survey
- ▶ One-on-one briefings
- ▶ Pre-construction community meeting

During construction:

- ▶ 24-hour construction hotline
- ▶ Advance notice of activities via emails, flyers web updates, phone calls and newsletters



King County

Department of
Natural Resources and Parks

Wastewater Treatment Division

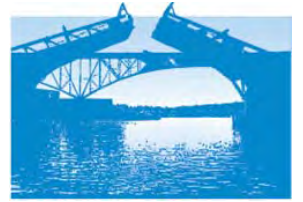
**Fremont Siphon
Replacement Project**

24/7 Construction Hotline

206-XXX-XXXX

In an emergency, dial 911

For more information

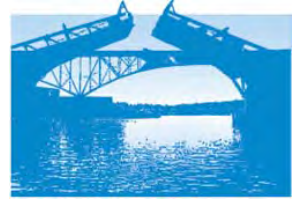


Website: Visit www.kingcounty.gov and search “Fremont Siphon”

Adair Muth

- ▶ **Phone:** 206-477-5505
- ▶ **Email:** adair.muth@kingcounty.gov

For hard copies of the website, please contact Adair



Questions?

