

Community Input on Design

Fremont Siphon Replacement Project



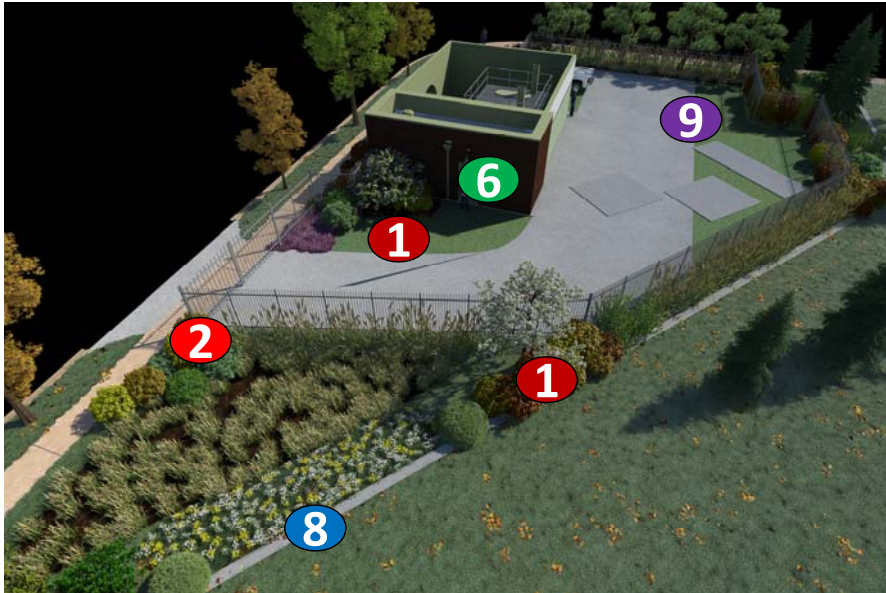
What We Heard	How We Responded
Extend the park feel to the site	1 Achieved by landscaping, including native plants, grass pavement and street benches
Balance opening the view to the Ship Canal with screening the facility	2 Provided vegetation for screening while allowing some views through to the Canal from Leary Way NW
Fit with the historic nature of buildings in Fremont <i>or</i> develop a simple, modern feel	3 Developed two design options for the odor control building: modern and historic themes
Integrate odor control stacks into building or make odor control stacks taller and artful	4 Odor control stacks are integrated into the design of the buildings, height limited by engineering constraints
Use the building wall as part of the fence and incorporate educational elements	5 Wall is incorporated as part of the fence; “peephole” as education incorporated into building face in both options
Minimize lighting onsite; avoid glare, place lighting at pedestrian level or reflect off the building, not overhead on poles	6 Lighting will be minimized onsite and incorporated into the building architecture
Include more lighting on NW 36th Street side of facility for safe pedestrian travel	7 Uplighting will be provided on the north wall of the building on Leary Way NW to light but not overlight
Minimize the fencing footprint, make the fence line curved to create an organic feel, do not use chain link or mesh fences	8 Fencing footprint was reduced and a mow strip was added along south side of property, variation was added to the fence line where possible, both options use aluminum rod fencing
Minimize the pavement footprint; use permeable pavement and grass-crete instead of asphalt	9 Reduced pavement by eliminating driveway on 2nd Ave NW, using permeable pavement and grass pavement

Community Input on Design

Fremont Siphon Replacement Project



Modern and Northwest Coastal



Historic and Northwest Forest

