



FREMONT SIPHON

replacement project



King County

Department of
Natural Resources and Parks
Wastewater Treatment Division

Community Meeting November 13, 2012



MWH

JACOBS ASSOCIATES

Meeting purpose



- ▶ Provide project update
- ▶ Provide new project information
- ▶ Provide next steps and opportunities for public participation

Agenda



Project overview and need

Project status update

- Environmental review complete
- Siting progress

Restoration

- Restoration elements
- Environmental mitigation

Next steps

- Design process
- Community meetings

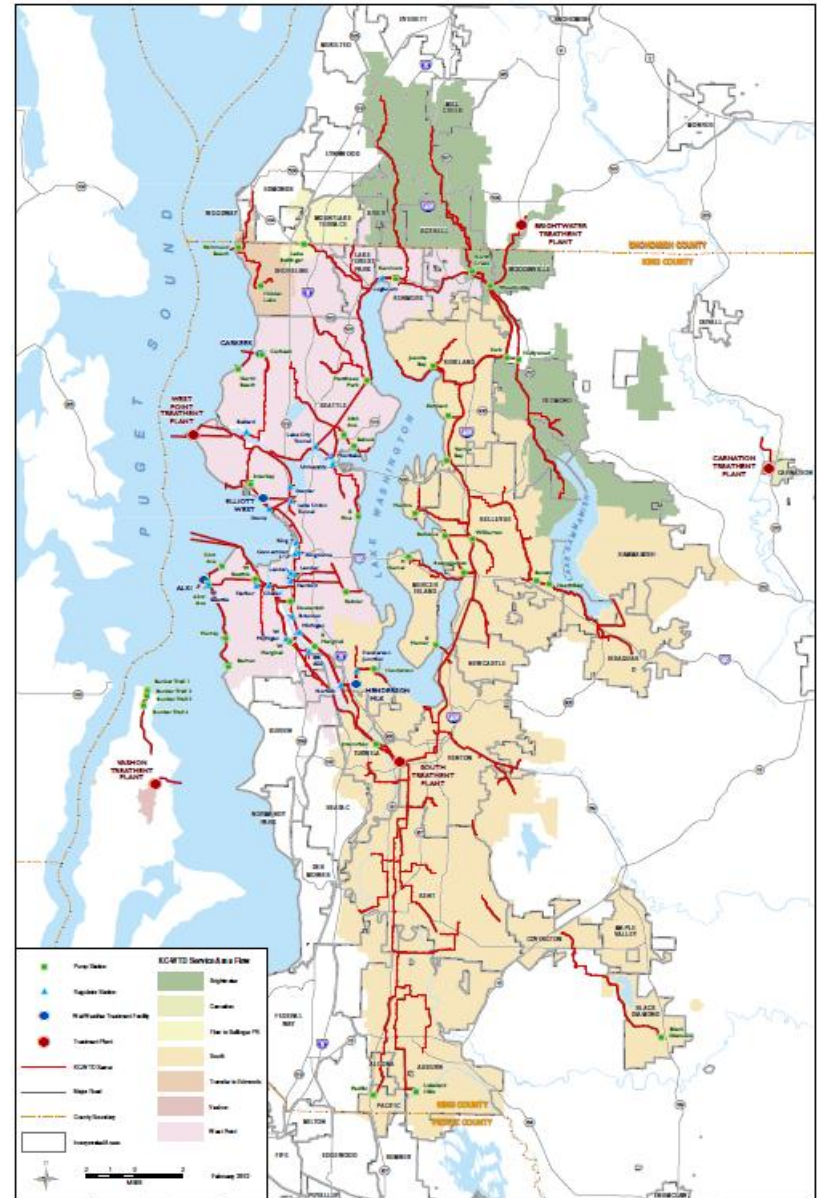
Discussion

Project Overview, Need & Status Update

Will Sroufe

What is WTD's Service Area?

King County
Wastewater Treatment
Division (WTD)
provides regional
wastewater service to
34 local sewer utilities
in King, Snohomish
and Pierce counties



Overview: wastewater conveyance in the project area



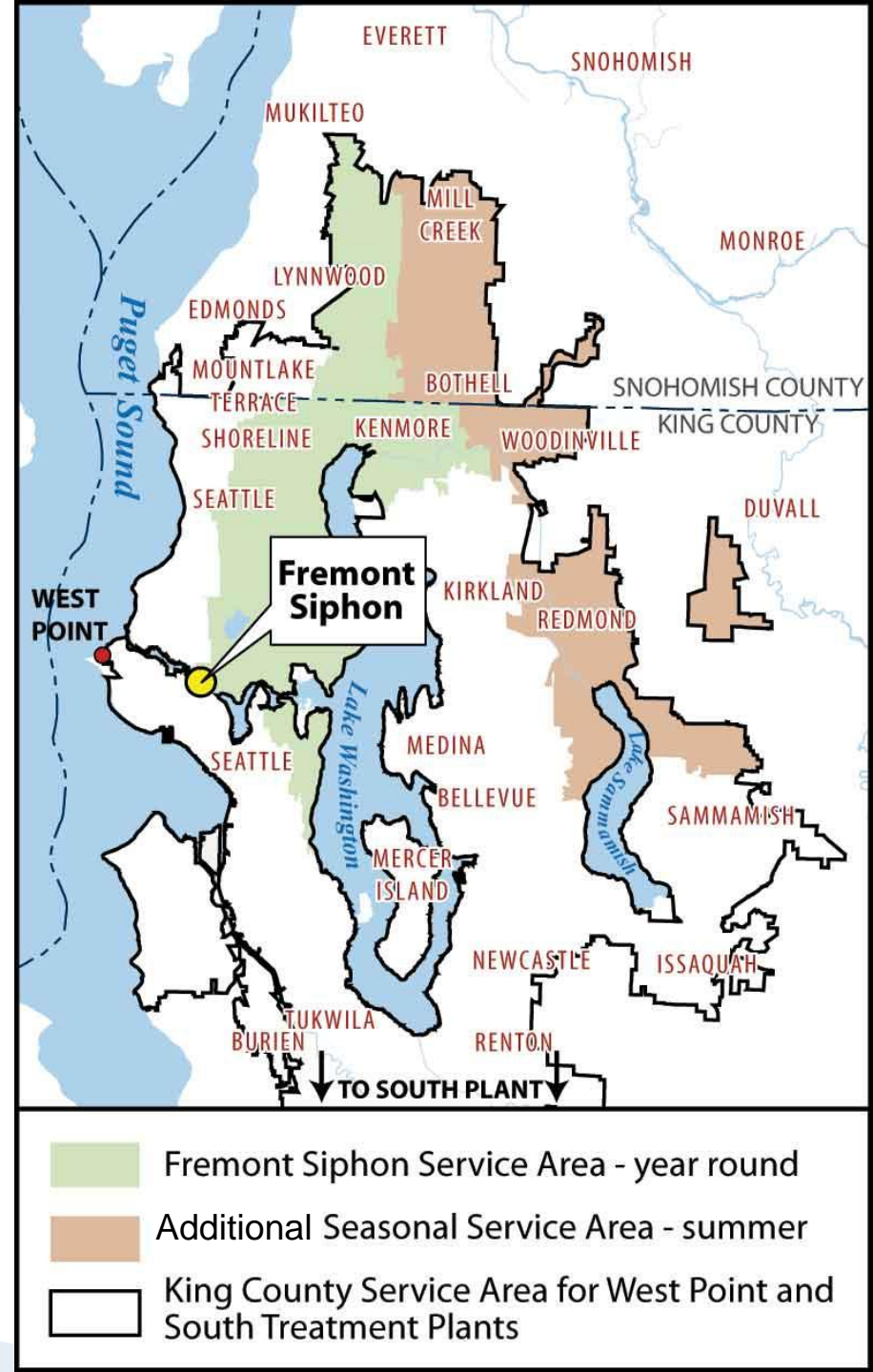
- ▶ Seattle Public Utilities collects most residential and commercial flow
- ▶ King County receives flow from SPU's system
- ▶ Both SPU and King County have CSO facilities that discharge into the Ship Canal



- King County sewer lines
- Seattle Public Utilities sewer lines

The Fremont Siphon is a critical system component

- ▶ Serves 60 square miles in winter, 114 in summer
- ▶ Carries half the wastewater going to the West Point Treatment Plant
- ▶ Needs replacement after 100 years of service



Fremont Siphon Replacement Project Overview

- ▶ Two new 60" pipelines installed under the Ship Canal
- ▶ Connections to existing North Interceptor
- ▶ Reconfiguration of City of Seattle CSO outfall in Fremont
- ▶ Restoration of affected areas
- ▶ Total duration is approx. 2–2.5 yrs

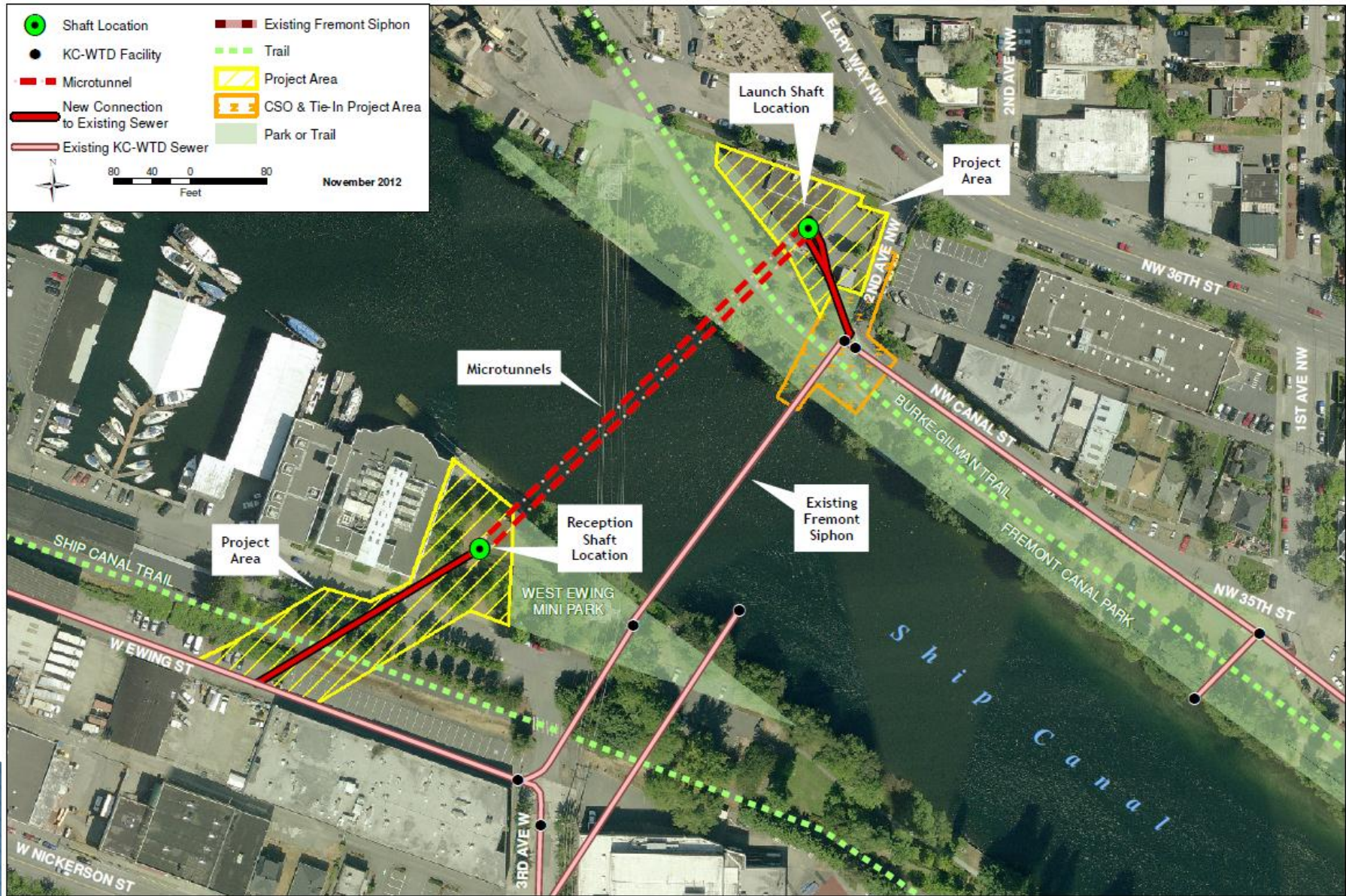
Status update – Fall 2012

- ▶ Summer 2012–Environmental review completed and permitting initiated
- ▶ Proceeding with property acquisition–purchase and easements
- ▶ Survey of trees and vegetation in project area
- ▶ Business/resident survey update
- ▶ Community group briefings throughout summer as requested
- ▶ Agency/stakeholder coordination meetings ongoing

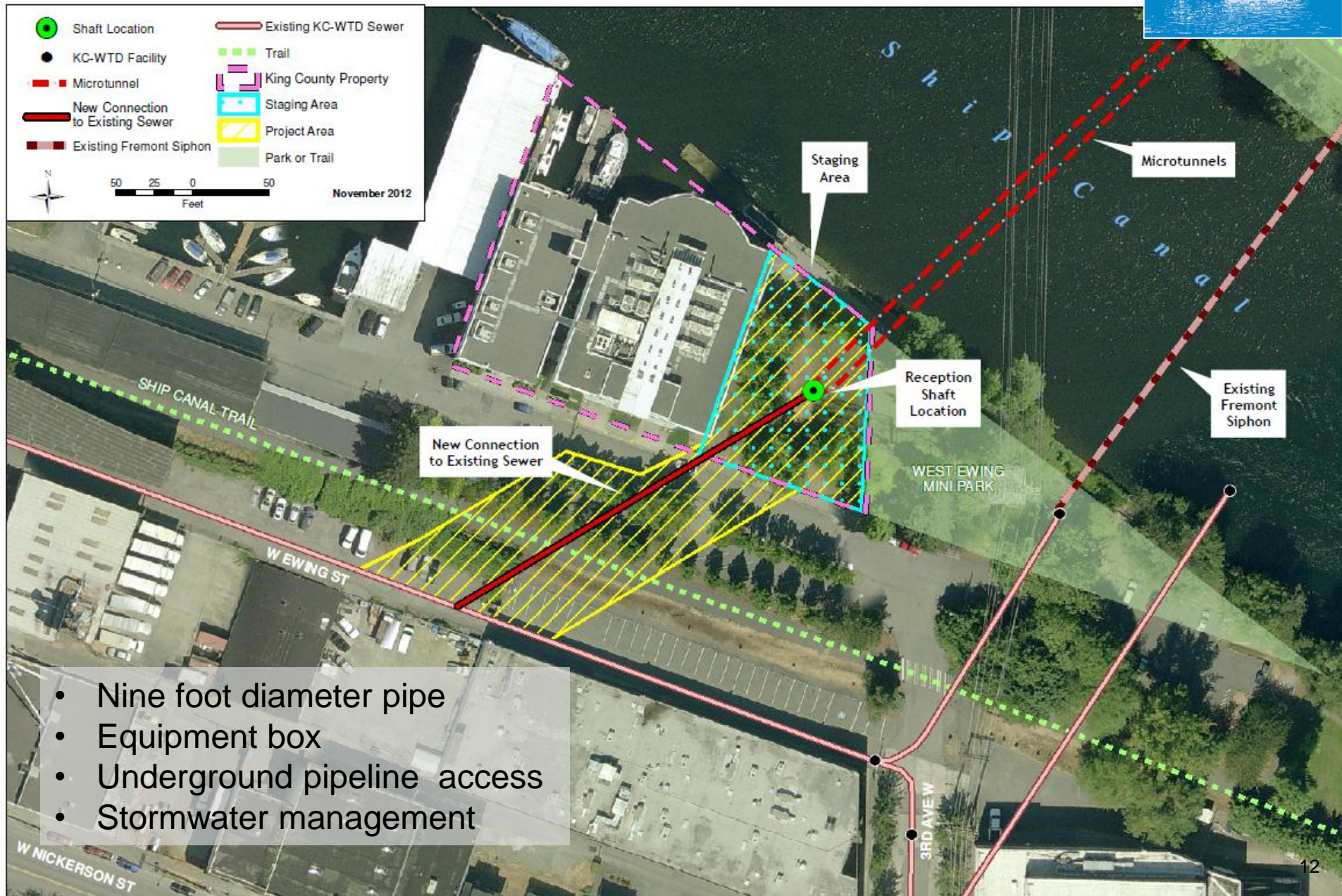
What We're Hearing

- ▶ Concerns about construction impacts (noise, traffic, parking, vibration, dust)
- ▶ Support for odor control, with concerns about odor control facility effectiveness
- ▶ Concerns about property acquisition as well as support for property acquisition to avoid larger project area in park
- ▶ Request for environmental mitigation to address impacts from CSO outfall work
- ▶ Interest in restoration/landscaping
- ▶ Suggestions for using public art elements to provide community gathering place

Fremont Siphon Project Area

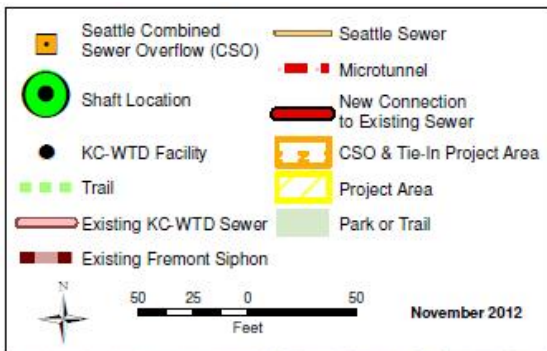


Status update -Queen Anne



- Nine foot diameter pipe
- Equipment box
- Underground pipeline access
- Stormwater management

Status update -Fremont



- Odor control building
- Underground pipeline access
- Driveway access
- Site security
- Stormwater management

Site Use– Operations



- ▶ Inspections and protective maintenance– weekly– monthly
- ▶ Odor control maintenance in Fremont– carbon replacement
- ▶ Landscape maintenance



Restoring Green Spaces in the Project Area

Chris Tiffany

Restoring Green Spaces

- ▶ King County WTD carries out restoration and mitigation projects as part of our Capital Improvement Projects efforts.
- ▶ Project staff work closely with agencies and jurisdictions on restoration conditions.



Restoration Elements– Trees



- ▶ Conducted tree survey in project area
- ▶ Certified arborist evaluated trees for health and potential for transplantation
- ▶ Tree specialist will evaluate feasibility for transplantation



Evaluation results



- ▶ Replace trees and restore landscaped areas in construction area
 - ▶ 25 trees affected in Fremont; 11 potential transplantation candidates
 - ▶ 41 trees affected in Queen Anne; 1 is a potential transplantation candidate
 - ▶ All trees will be replaced at a 2 to 1 ratio
- ▶ Considerations
 - ▶ Stormwater management functions
 - ▶ Habitat
 - ▶ Aesthetics

Environmental Mitigation



- ▶ Improve vegetation along the Ship Canal
 - ▶ Remove invasive ivy
 - ▶ Replace with native vegetation that provides ground cover and overhangs the waterway
- ▶ Considerations:
 - ▶ Native vegetation beneficial to local wildlife
 - ▶ Erosion control



Area of invasive ivy in Queen Anne

Stormwater Management



- ▶ King County will follow City requirements to mitigate impervious surfaces on site
- ▶ Requirements may be met by landscaping features that could include:
 - ▶ Soil amendment
 - ▶ Bioretention swales or rain gardens
 - ▶ Trees
 - ▶ Other measures



What's Next?

- ▶ City of Seattle will place signs on trees that may be removed in Fremont and Queen Anne



PUBLIC NOTICE

**This Tree is Proposed for
Removal & Replacement**

Proposed by
The Seattle Department of Transportation
Mercer Corridor Project


COMMENT PERIOD X/XX/XX to X/XX/XX

For Project Information:
see project website – www.xxxxxxxxxxxx
Quick Tree Facts:
Number of trees proposed for removal: XX
Value of trees proposed for removal: XXXX
XX new trees will be planted

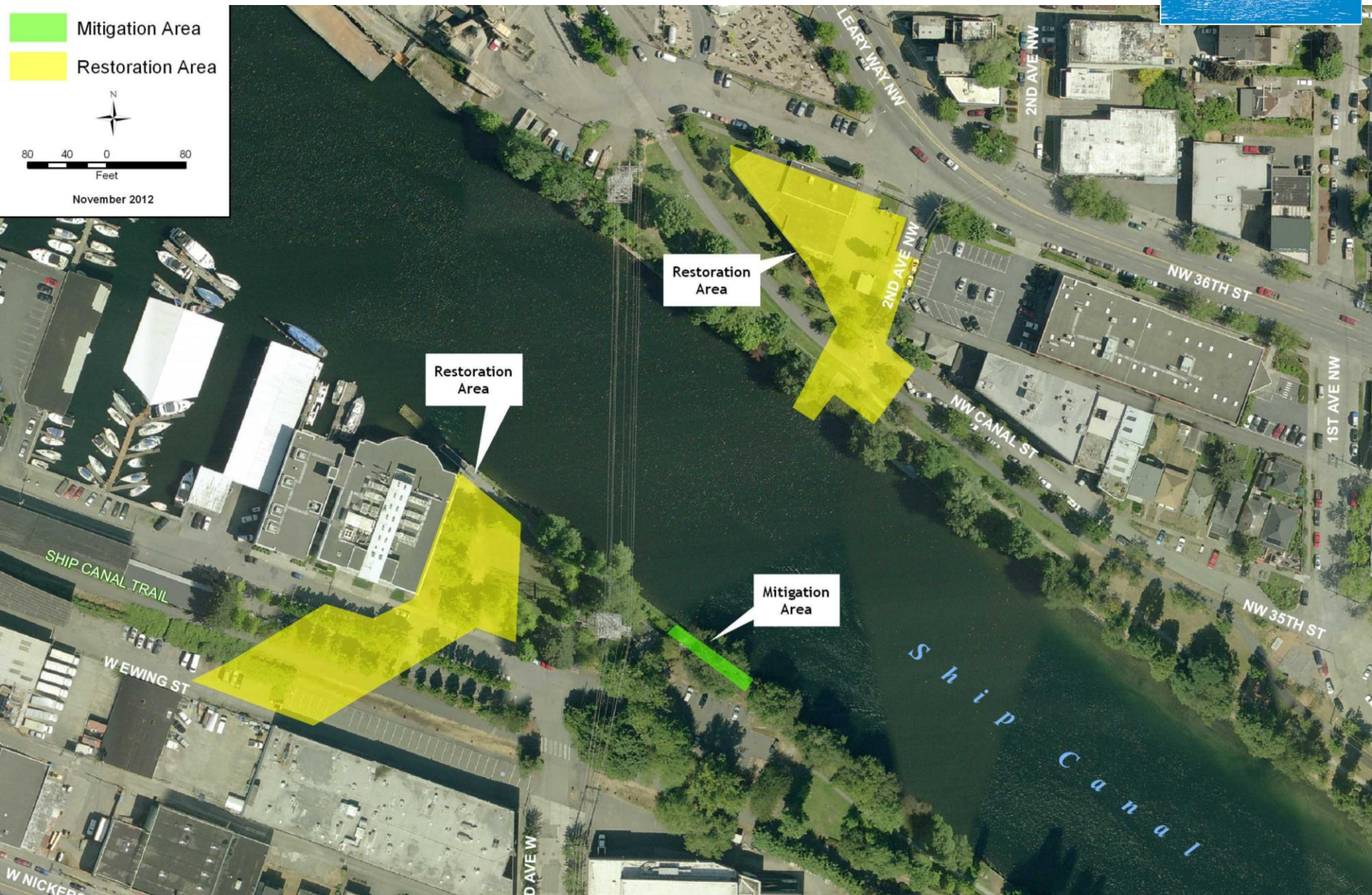
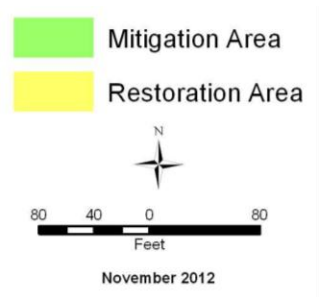
SEND PUBLIC COMMENTS TO:
John Doe / SDOT Project Manager
jon.doe@seattle.gov

public meeting XX/XX on XX/XX/XX
at (location)

THIS PLACARD SHALL ONLY BE REMOVED BY
CITY OF SEATTLE AUTHORITY



Plan view of restoration areas

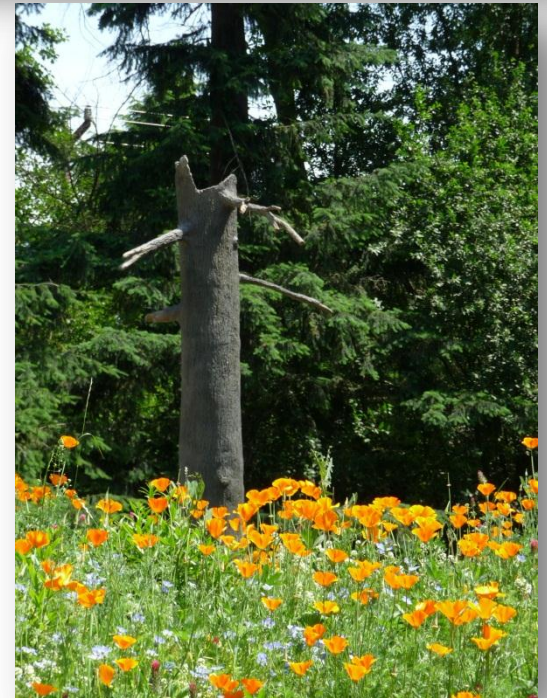




Next Steps

Monica Van der Vieren
Michael Popiwny

Working with communities on design



Community input informs design



Community input informs design



Example: Design decision process– North Beach CSO Control Project



The team:

- ▶ Tracked community thoughts and input throughout the planning and early design process
- ▶ Developed design guidelines based on community values
- ▶ Designed three landscape and architecture themes using community input
- ▶ Presented three themes for community feedback
- ▶ Made decision and revised theme based on input

What We Started With



- ▶ Community disliked look of the existing site and fencing
- ▶ People wanted to minimize view impacts for new above ground building
- ▶ Community stressed the need for site security



Theme I– Beach look



Theme II- Neighborhood look



Theme III–Northwest regional influences



What We Heard



- ▶ Community preferred the “Beach” theme and vertical rod fencing
- ▶ People wanted more color in the landscaping
- ▶ Community appreciated eliminating some surface features and making others appear less obvious
- ▶ People thanked the team for listening

Design Process for Fremont



- ▶ Give your thoughts
- ▶ Team listens for community values
- ▶ Attend Design Workshop on January 12
 - ▶ Develop guiding principles
 - ▶ Look at site concepts with flexible elements
- ▶ Design team responds to community input
- ▶ Design team develops design aesthetics, layout

Design Workshop



Join us to discuss flexible design elements:

- ▶ Viewsheds
- ▶ Architecture look and feel
- ▶ Odor control stack design
- ▶ Landscaping
- ▶ Lighting

Learn about the
public art process!



Contact us



Website: Visit www.kingcounty.gov and search “Fremont Siphon”

Monica Van der Vieren

▶ **Phone:** 206-263-7301

▶ **Email:**
monica.vandervieren@kingcounty.gov

For hard copies of the website, please contact Monica Van der Vieren