

Building or Remodeling in King County?

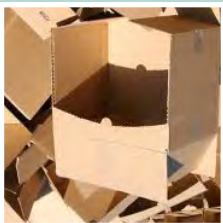
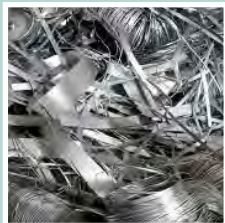
Recyclable construction & demolition (C&D) materials from construction projects are **REQUIRED** to be recycled. Separate these materials from other construction waste.

C&D RECYCLABLES

Take these materials to a designated recycling facility



Asphalt Concrete/Paving • Drywall/Gypsum (new, unpainted) • Brick



Wood (unpainted, untreated) • Metal • Wire • Cardboard

See locations on the back.

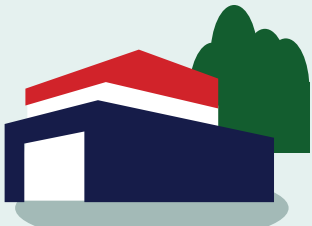


Designated C&D Recycling Facilities accept recyclable C&D materials and mixed loads

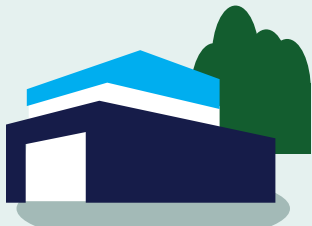
C&D WASTE

Depending on your vehicle type, either take C&D waste to a **C&D transfer station** or to a **King County transfer station**.

Insulation • Painted and Treated Wood
Railroad Ties and Creosoted Timbers • Carpet • Roofing
Countertops • Painted Drywall • Composite Cement Siding • Veneer



Waste Management and Republic C&D Transfer Stations accept non-recyclable C&D waste



only non dump bed vehicles

King County Transfer Stations



Vehicle Restrictions at King County Transfer Stations

Dump bed vehicles and dump bed trailers with loads of C&D are not accepted at King County Transfer Stations. They must use C&D recycling facilities or C&D transfer stations listed on the back of this flyer. For additional information, call 206-477-4466

For information on C&D requirements visit www.greentools.us. To locate companies recycling specific commodities visit the "What Do I Do With...?" database by doing a web search for "**King County WDIDW**".

Alternate formats available upon request.
206-477-4466, TTY Relay: 711

**King County**
Department of Natural Resources and Parks
Solid Waste Division

Waste Prevention

Resource Recovery

Waste Disposal

www.kingcounty.gov/solidwaste
© 2012 M AR072621

Construction & Demolition (C&D) Recycling and Disposal Facilities

*These facilities have agreements with King County
to properly manage C&D materials.*



Designated C&D recycling facilities

*(for mixed recyclable
C&D materials)*

- **DTG Maltby**
22014 W Bostian Rd
Woodinville, WA 98072
425-549-3012
- **DTG Recovery 1**
1805 Stewart St.
Tacoma, 98421
253-627-1180
- **DTG Renton**
701 SW 34th St.
Renton 98057
425-245-8015
- **DTG Seattle**
7201 E Marginal Way S
Seattle, WA 98108
206-337-2799
- **DTG Woodinville**
5906 238th St SE
Woodinville 98072
425-245-8015
- **Maltby Container & Recycling**
(note: no drop-offs, call for info)
425-778-3688
- **United Recycling Seattle**
74 S. Hudson St.
Seattle 98134
206-209-1300
- **United Recycling Snohomish**
18827 Yew Way
Snohomish 98296
360-668-4300



Designated C&D waste disposal facilities

(non-recyclable)

- **CRC/Cascade Recycle Center**
(owned by Waste Management)
425-365-6933
*This facility is not open to public
drive-in customers but is open to
commercial customers.*
- **RNW/Recycle Northwest**
(owned by Waste Management)
355 H St. NW
Auburn 98001
206-200-5895
No hand unloads.



Designated C&D facilities with both disposal and recycling

- **Black River**
(owned by Republic Services)
501 Monster Road
Renton 98059
425-235-0269
- **Eastmont**
(owned by Waste Management)
7201 W Marginal Way SW
Seattle 98106
253-985-1301
No hand unloads.

