

Report to



King County

King County Superior Court

ECR Online

Use Case 12 – Customer Log On



Sierra

New thinking.

Sierra Systems Inc.
10900 N.E. 8th Street, Suite 1110
Bellevue, WA 98004-1455 USA
www.SierraSystems.com

Contact: Jona Vallarta
Phone: 425.688.7724
Fax: 425.451.4430
Email: JonaVallarta@SierraSystems.com

Date: September 13, 2005

Sierra Systems

REVISION LOG: USE CASE XX – CUSTOMER LOG ON

Revision Date	Description	Changes Made By
July 26, 2005	Initial Draft	Les Scott
August 24, 2005	Modifications based on DJA's input	Jona Vallarta

TABLE OF CONTENTS

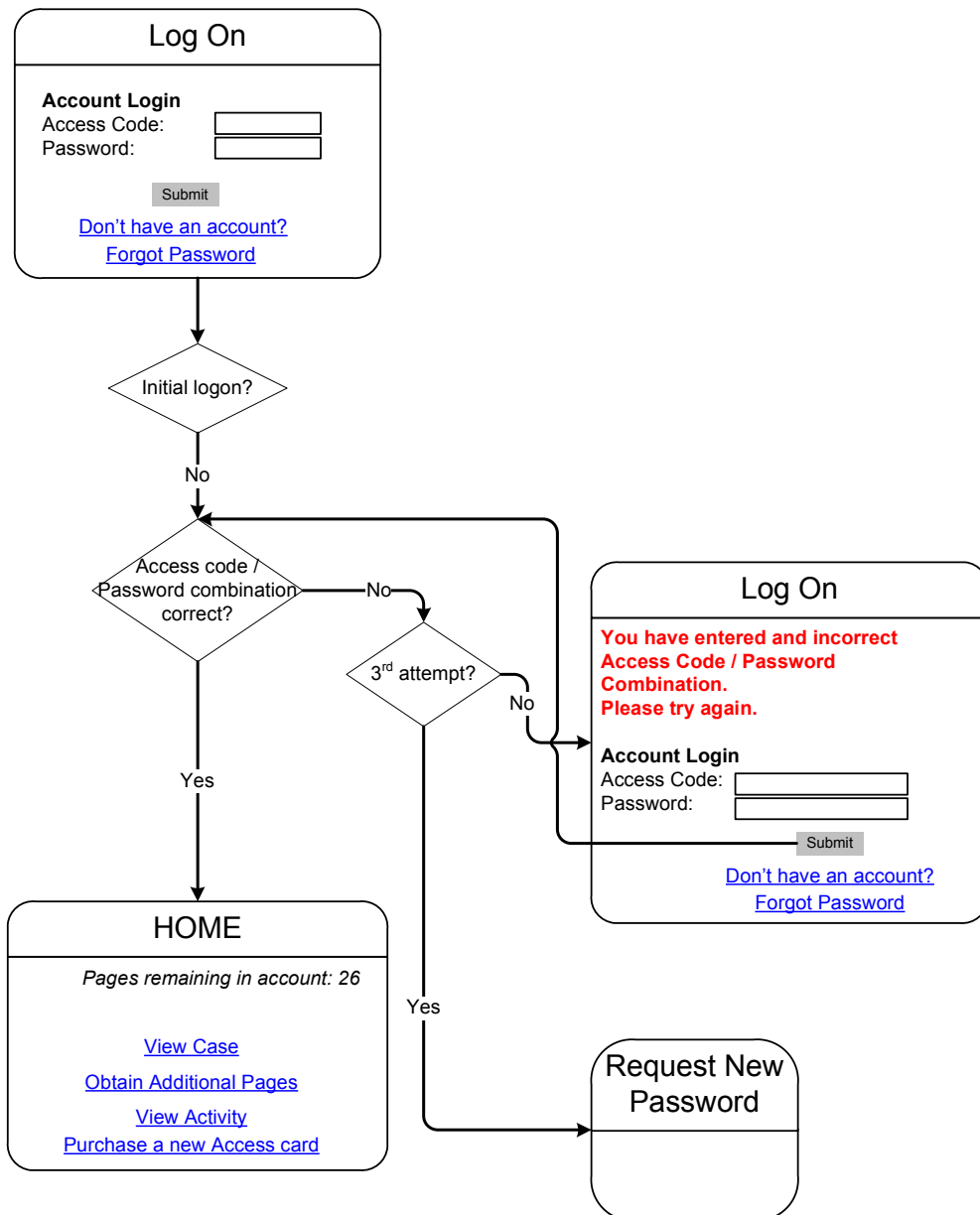
1. Use Case 12 — Customer Log On	2
2. Normal Process.....	3
2.1. Overview	3
2.2. Steps 1 – 3	4
2.3. Steps 4 – 5	4
3. Exceptional Processes	5
3.1. Step 4 (Exceptional Process)	5

1. USE CASE 12 — CUSTOMER LOG ON

Use Case Name	Customer Log On	
Use Case Number	UC12	
Description	This use case describes how a user logons onto the system with their subscription.	
Actors	Public users (ex: from home)	
Preconditions	The user has a valid subscription account to ECR Online.	
Triggers and Frequency	The user wishes to access functionality with the ECR Online application.	
Normal Process	Exceptional Process	
1. The user accesses the King County “ECR Online” website.		
2. The “Log On” page displays.		
3. The user enters their “Access Code” and “Password” and clicks “Submit”	<ul style="list-style-type: none">• Forgot Password	
4. The system validates the subscription is valid.	<ul style="list-style-type: none">• If the access code is not valid, an error message displays to the user.• If the user tries three times and is unsuccessful, the user is redirected to Forgot Password (UC13.5).	
5. The “Home” page displays.		
Post Condition	The user successfully authenticated into ECR Online.	

2. NORMAL PROCESS

2.1. Overview



2.2. Steps 1 – 3

Log On

Account Login

Access Code:

Password:

Submit

[Don't have an account?](#)
[Forgot Password](#)

2.3. Steps 4 – 5

HOME

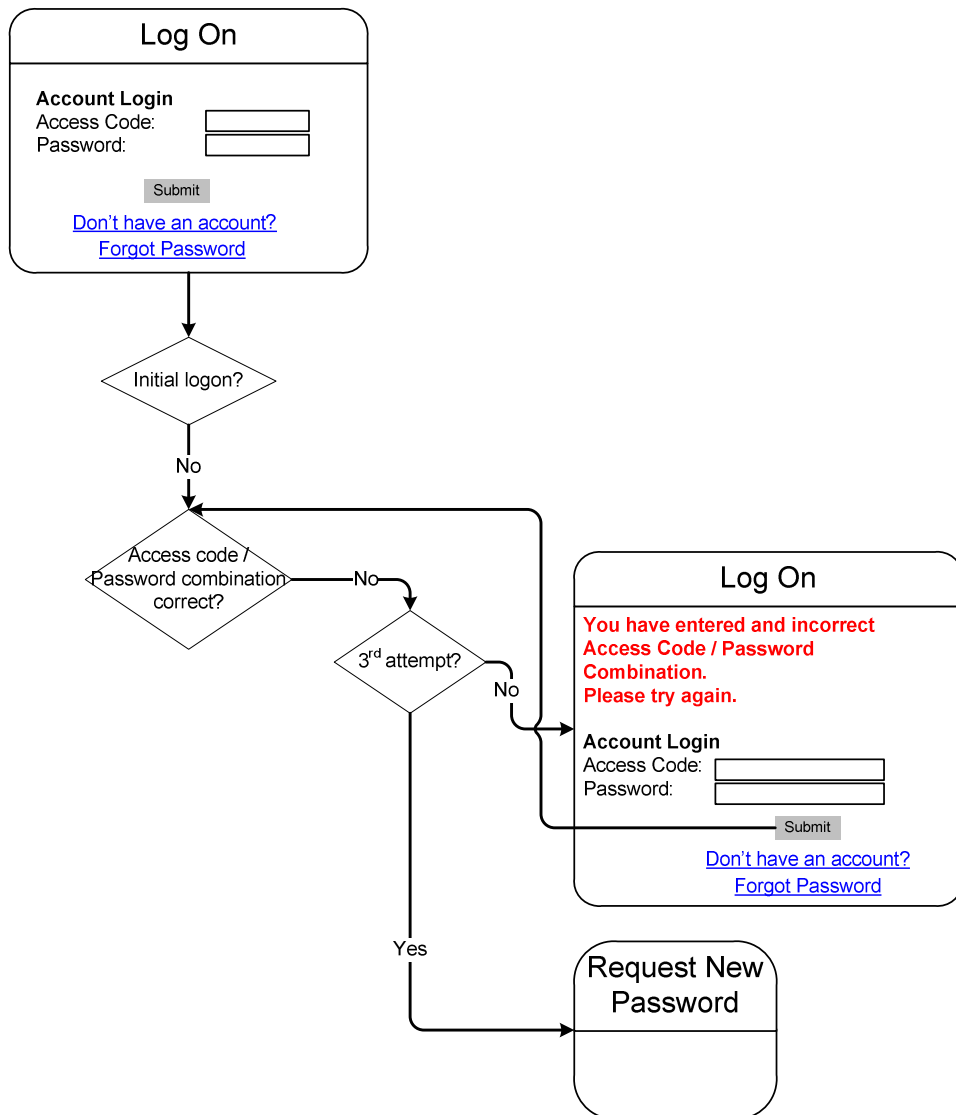
Pages remaining in account: 432

[View Case](#)
[Obtain Additional Pages](#)
[View Activity](#)

Get
Adobe

3. EXCEPTIONAL PROCESSES

3.1. Step 4 (Exceptional Process)



In this exceptional process, the user has entered and incorrect Access Code / Password combination. The user is provided 3 chances to enter the correct Access Code / Password combination. After three failed attempts, the user is redirected to request a new password.