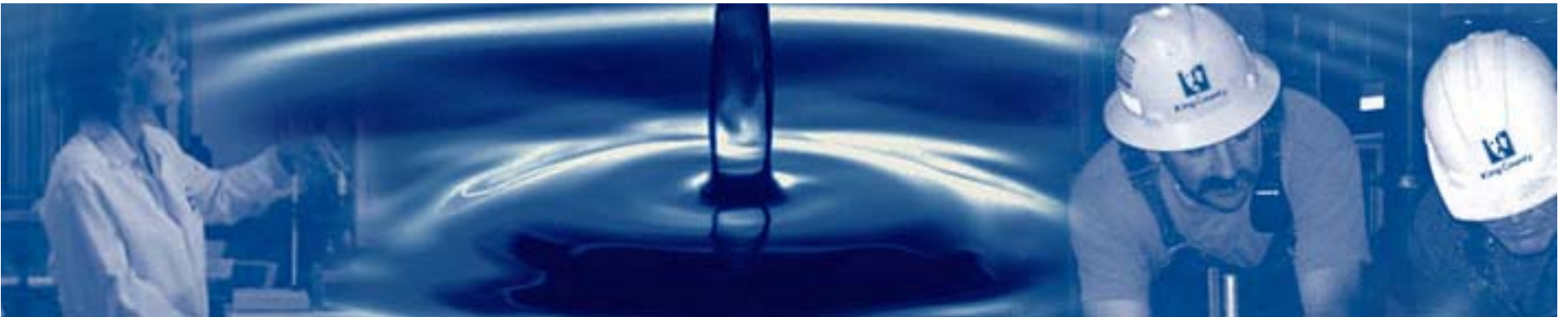


Wastewater Treatment Division



HHD/ Green River Flood Impacts

King County
Department of Natural Resources and Parks
Wastewater Treatment Division



WTD Key Priorities

💧 Employee Safety is Paramount.

- WTD Safety Directive: “No job, project or emergency is so important that we can not take the time and effort to do it as safely as possible.”

💧 Protection of Treatment Plant Systems.

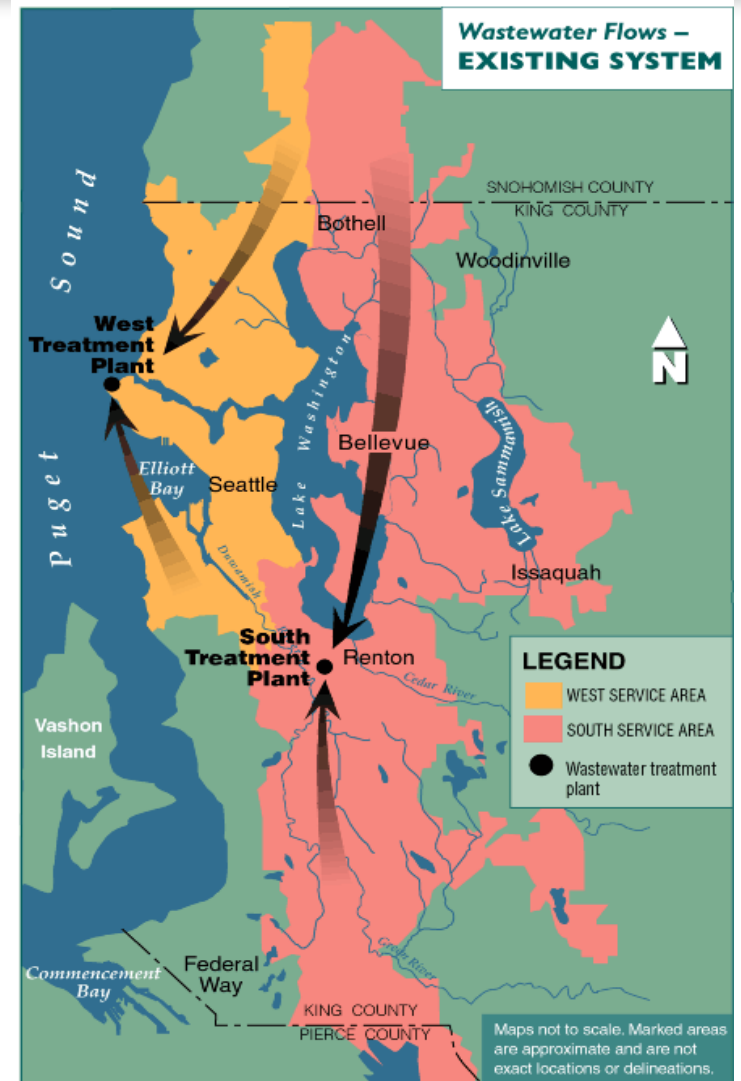
- Protection of conveyance & treatment plant systems is essential to ensure the critical public health service of wastewater treatment.

💧 Protection of the Environment.

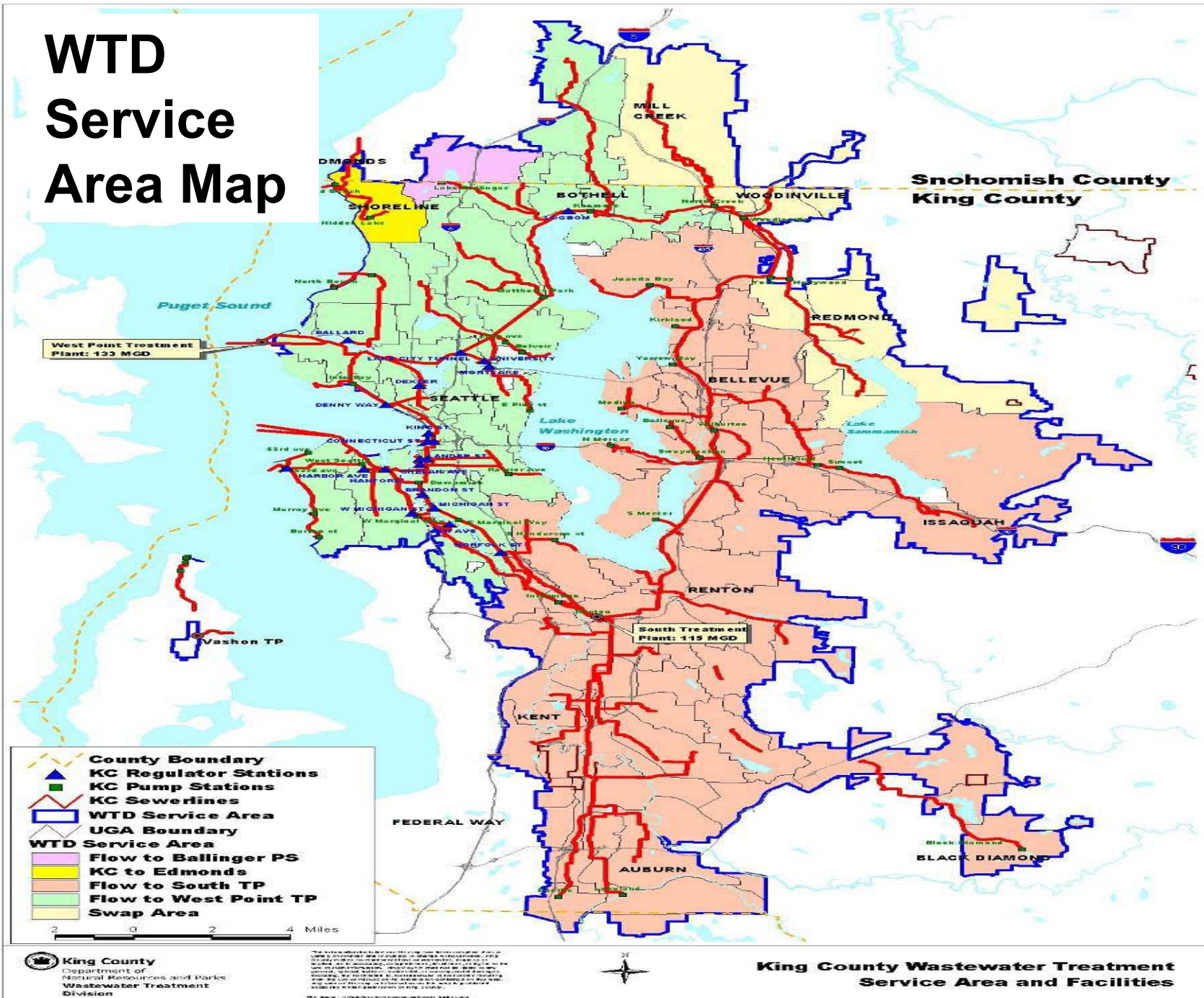
- WTD protects the environment by treating and reclaiming wastewater, recycling solids and generating energy.

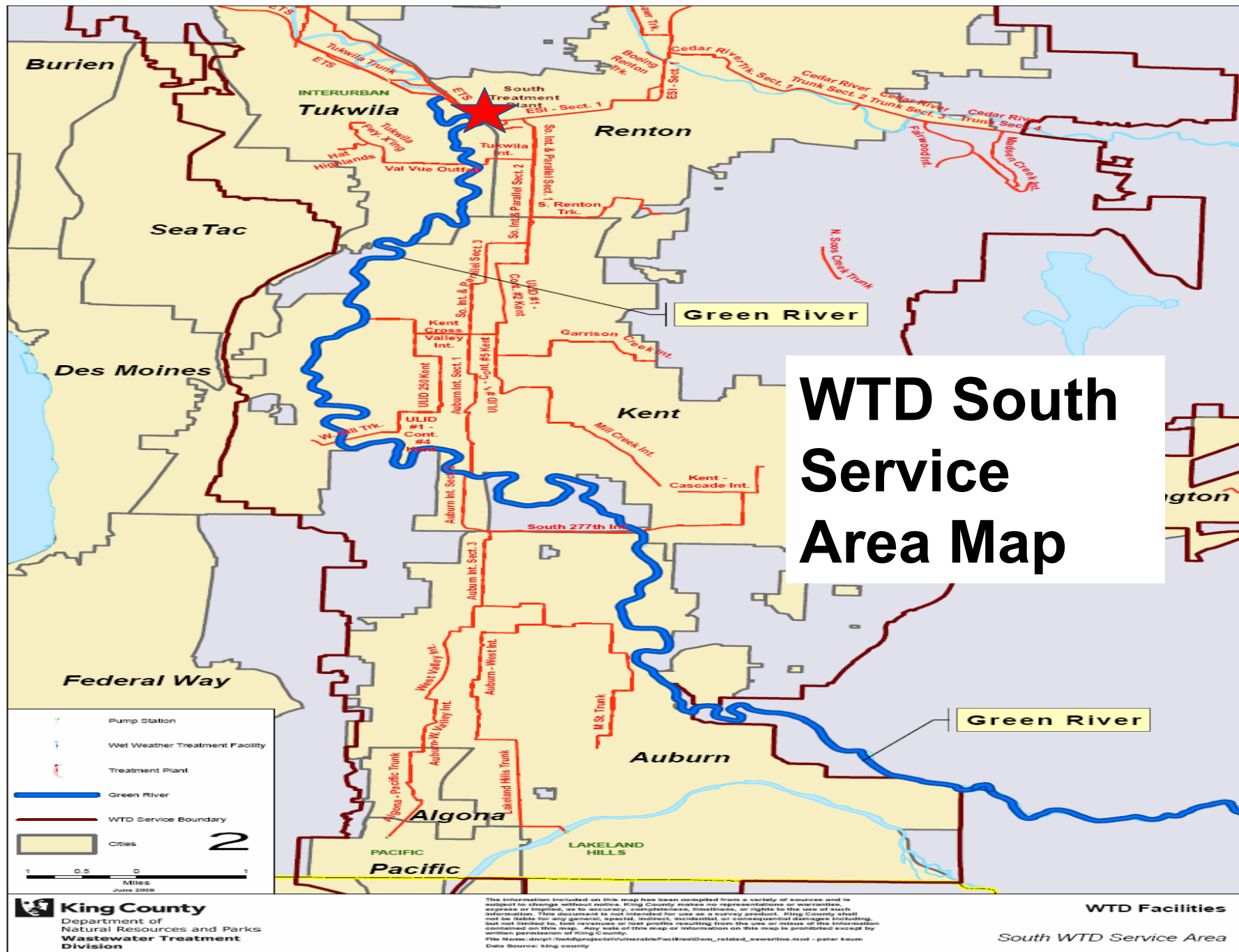
WTD System & Facilities

- 💧 Sewage Treated: 210 mgd avg.
 - West Point - 112 mgd avg.
 - South Plant - 98 mgd avg.
- 💧 Maximum Capacity:
 - West Point - 440 mgd peak
 - South Plant - 325 mgd peak
- 💧 Flow shunting may be possible to relieve pressure on the South Treatment Plant



WTD Service Area Map





South Treatment Plant at Renton



South Treatment Plant (STP) @ Renton)

Plant & System Importance

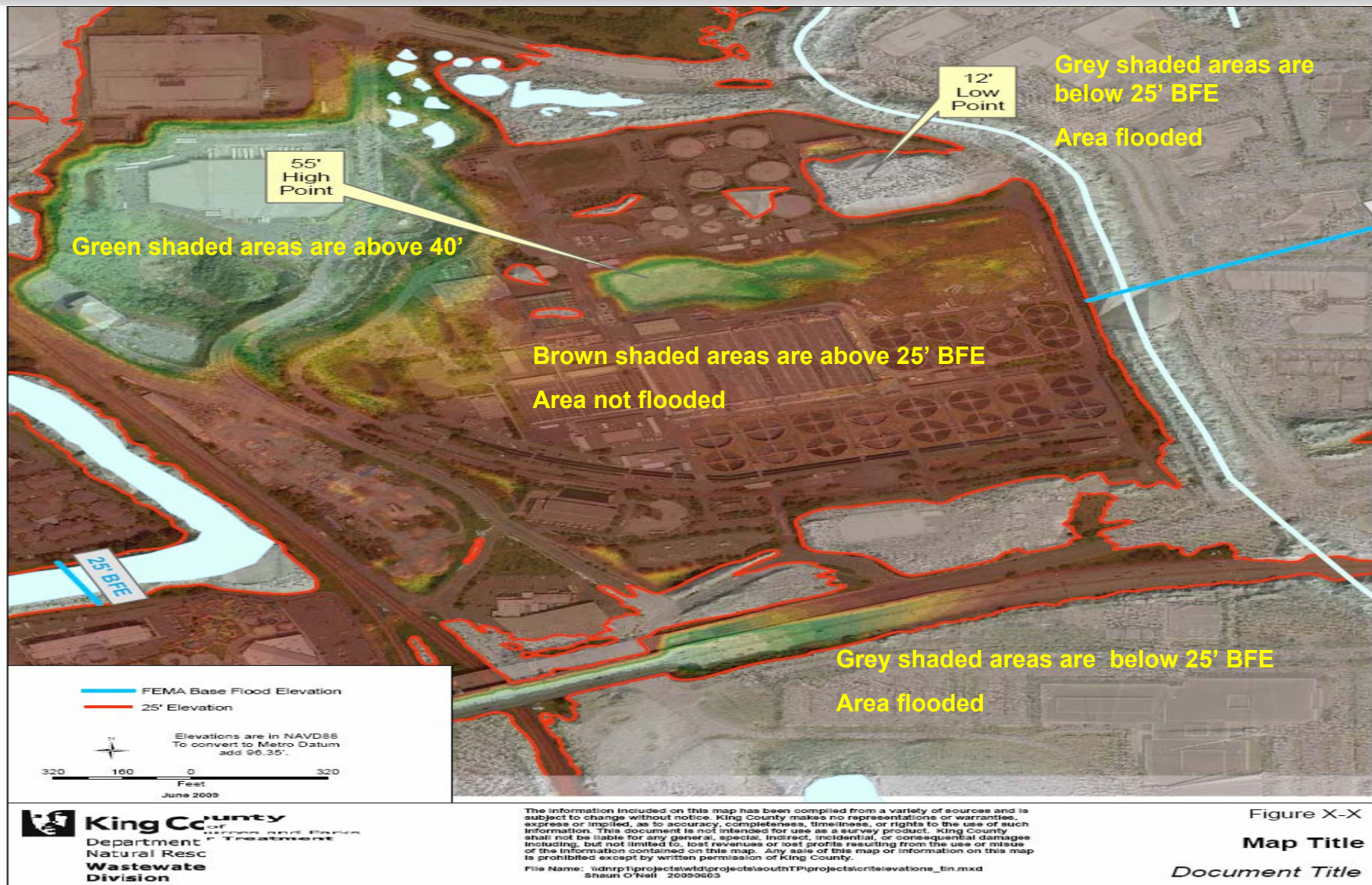
- 💧 Serves as the primary wastewater conveyance & treatment system for the valley -24/7
- 💧 Mission is to remain operational throughout Green River flooding scenarios
- 💧 Plant will not be evacuated because it is an essential public utility and necessary for conveyance of wastewater/ floodwater.



Impacted Facilities & Structures

- 💧 South Treatment Plant (“STP”)
- 💧 STP diversion & diffusers
- 💧 Interurban Pump Station
- 💧 Interceptor pipelines (>400 mh)
- 💧 Siphon crossings under Green River

Plant Elevations



Interurban Pump Station



Critical Plant & System Issues

- 💧 PSE electricity service (dual feeds)
- 💧 PSE gas service (Cogen)
- 💧 Surcharging of in-plant pipelines
- 💧 Influent flows exceed plant capacity
- 💧 Damage to conveyance structures
- 💧 Limited flow shunting to WP due to high flows throughout the entire system

Plant Access & Staffing Considerations

- 💧 Staffed 24 hours a day with essential limited personnel
- 💧 Developing a plan for the safe staging and transport of staff to and from the plant – requires coordination with OEM
- 💧 Emergency supplies to house staff for several days

Questions?

