

Communications & Control Center

Presented by:

Don Campbell

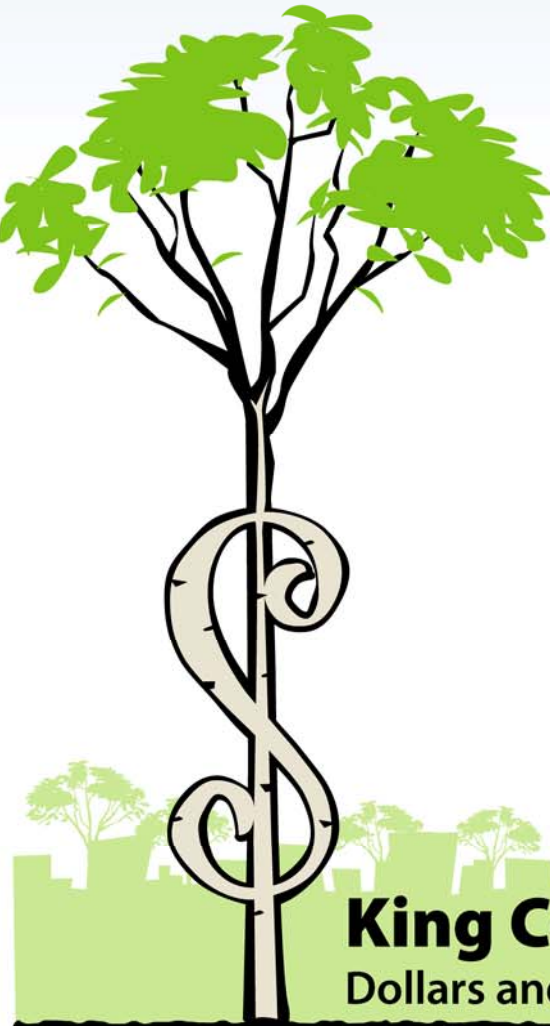
King County

Department of Transportation

Transit

Design & Construction

Project Manager



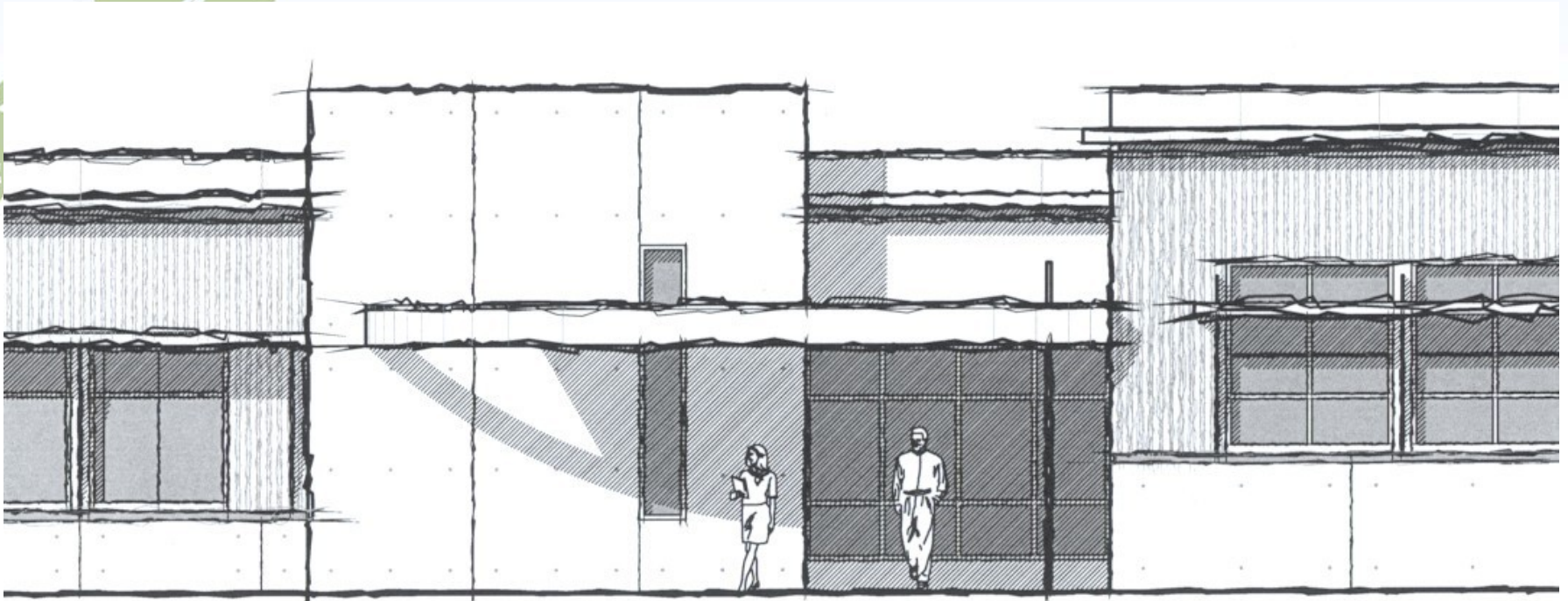
King County Building Summit:

Dollars and Sense Tools to Green Your Project



King County

Communications & Control Center



Communications & Control Center

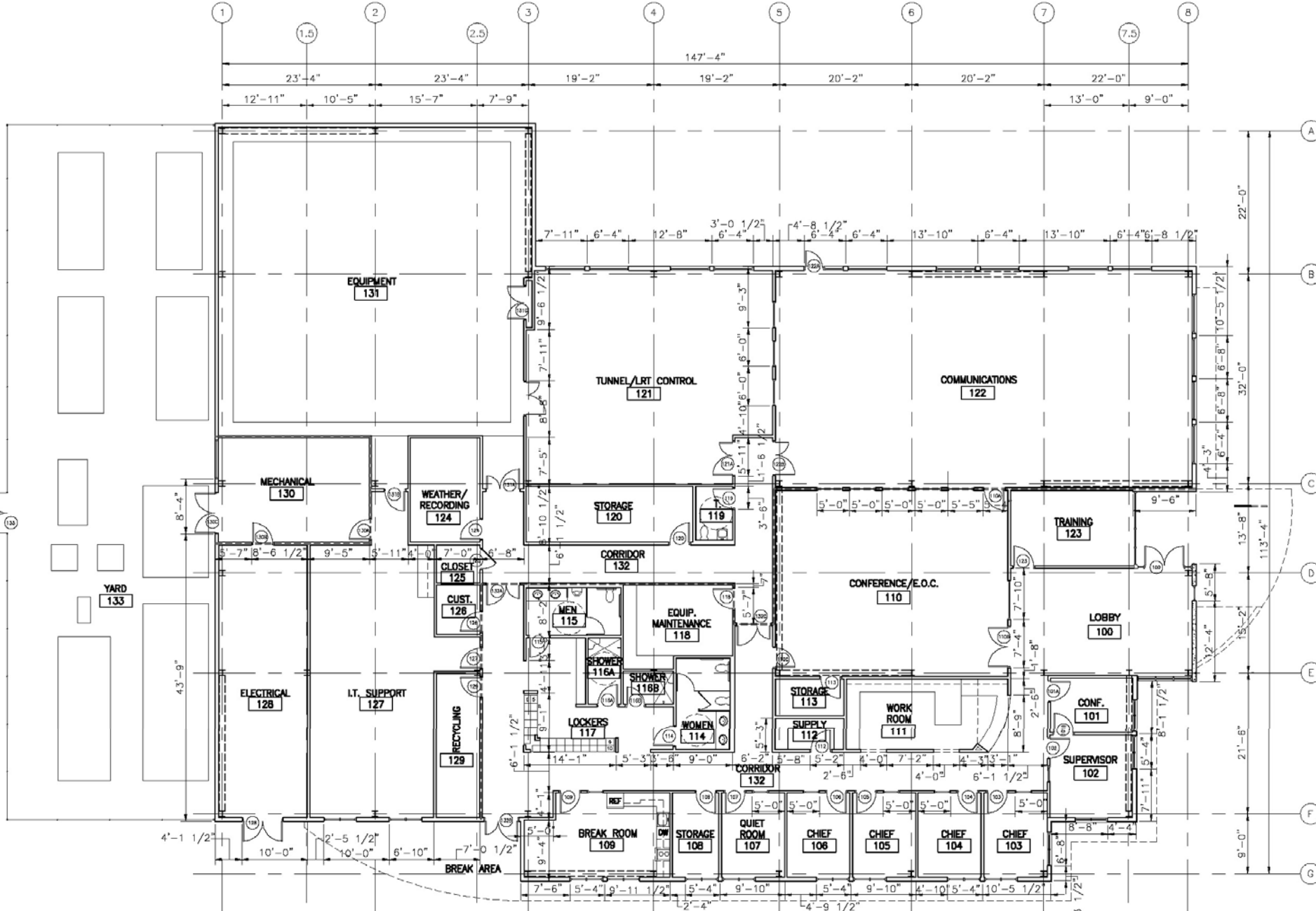


Communications & Control Center



Communications & Control Center





Communications & Control Center



Communications & Control Center

LEED™ Scorecard									
35	2	25	Total Project Score				Possible Points		69
Certified 26 to 32 points Silver 33 to 38 points Gold 39 to 51 points Platinum 52 or more points									
8		3	Sustainable Sites				Possible Points		14
Y		N							
Y			Prereq 1	Erosion & Sedimentation Control					
1			Credit 1	Site Selection				1	
		NA	Credit 2	Urban Redevelopment				1	
		NA	Credit 3	Brownfield Redevelopment				1	
1			Credit 4.1	Alternative Transportation, Public Transportation Access				1	
1			Credit 4.2	Alternative Transportation, Bicycle Storage & Changing Rooms				1	
1			Credit 4.3	Alternative Transportation, Alternative Fuel Refueling Stations				1	
1			Credit 4.4	Alternative Transportation, Parking Capacity				1	
1			Credit 5.1	Reduced Site Disturbance, Protect or Restore Open Space				1	
	1		Credit 5.2	Reduced Site Disturbance, Development Footprint				1	
		NA	Credit 6.1	Stormwater Management, Rate and Quantity				1	
	1		Credit 6.2	Stormwater Management, Treatment				1	
1			Credit 7.1	Landscape & Exterior Design to Reduce Heat Islands, Non-Roof				1	
1			Credit 7.2	Landscape & Exterior Design to Reduce Heat Islands, Roof				1	
	1		Credit 8	Light Pollution Reduction				1	
4		1	Water Efficiency				Possible Points		5
Y		N							
1			Credit 1.1	Water Efficient Landscaping, Reduce by 50%				1	
1			Credit 1.2	Water Efficient Landscaping, No Potable Use or No Irrigation				1	
		NA	Credit 2	Innovative Wastewater Technologies				1	
1			Credit 3.1	Water Use Reduction, 20% Reduction				1	
1			Credit 3.2	Water Use Reduction, 30% Reduction				1	
4		13	Energy & Atmosphere				Possible Points		17
Y		N							
Y			Prereq 1	Fundamental Building Systems Commissioning					
Y			Prereq 2	Minimum Energy Performance					
Y			Prereq 3	CFC Reduction in HVAC&R Equipment					
2			Credit 1.1	Optimize Energy Performance, 20% New / 10% Existing				2	
		NA	Credit 1.2	Optimize Energy Performance, 30% New / 20% Existing				2	
		NA	Credit 1.3	Optimize Energy Performance, 40% New / 30% Existing				2	
		NA	Credit 1.4	Optimize Energy Performance, 50% New / 40% Existing				2	
		NA	Credit 1.5	Optimize Energy Performance, 60% New / 50% Existing				2	
		NA	Credit 2.1	Renewable Energy, 5%				1	
		NA	Credit 2.2	Renewable Energy, 10%				1	
		NA	Credit 2.3	Renewable Energy, 20%				1	
1			Credit 3	Additional Commissioning				1	
1			Credit 4	Ozone Depletion				1	
		NA	Credit 5	Measurement & Verification				1	
		NA	Credit 6	Green Power				1	
6		6	Materials & Resources				Possible Points		13
Y		N							
Y			Prereq 1	Storage & Collection of Recyclables					
		NA	Credit 1.1	Building Reuse, Maintain 75% of Existing Shell				1	
		NA	Credit 1.2	Building Reuse, Maintain 100% of Existing Shell				1	
		NA	Credit 1.3	Building Reuse, Maintain 100% Shell & 50% Non-Shell				1	
1			Credit 2.1	Construction Waste Management, Divert 50%				1	
1	*		Credit 2.2	Construction Waste Management, Divert 75%				1	
		NA	Credit 3.1	Resource Reuse, Specify 5%				1	
		NA	Credit 3.2	Resource Reuse, Specify 10%				1	
1			Credit 4.1	Recycled Content, Specify 25%				1	
1	*		Credit 4.2	Recycled Content, Specify 50%				1	
1			Credit 5.1	Local/Regional Materials, 20% Manufactured Locally				1	
	1*		Credit 5.2	Local/Regional Materials, of 20% Above, 50% Harvested Locally				1	
		NA	Credit 6	Rapidly Renewable Materials				1	
1			Credit 7	Certified Wood				1	
12		2	Indoor Environmental Quality				Possible Points		15
Y		N							
Y			Prereq 1	Minimum IAQ Performance					
Y			Prereq 2	Environmental Tobacco Smoke (ETS) Control					
		NA	Credit 1	Carbon Dioxide (CO₂) Monitoring				1	
		1	Credit 2	Increase Ventilation Effectiveness				1	
1			Credit 3.1	Construction IAQ Management Plan, During Construction				1	
1			Credit 3.2	Construction IAQ Management Plan, Before Occupancy				1	
1			Credit 4.1	Low-Emitting Materials, Adhesives & Sealants				1	
1			Credit 4.2	Low-Emitting Materials, Paints				1	
1			Credit 4.3	Low-Emitting Materials, Carpet				1	
1			Credit 4.4	Low-Emitting Materials, Composite Wood				1	
1			Credit 5	Indoor Chemical & Pollutant Source Control				1	
1			Credit 6.1	Controllability of Systems, Perimeter				1	
		NA	Credit 6.2	Controllability of Systems, Non-Perimeter				1	
1			Credit 7.1	Thermal Comfort, Comply with ASHRAE 55-1992				1	
1			Credit 7.2	Thermal Comfort, Permanent Monitoring System				1	
1			Credit 8.1	Daylight & Views, Daylight 75% of Spaces				1	
1			Credit 8.2	Daylight & Views, Views for 90% of Spaces				1	
1		2	Innovation & Design Process				Possible Points		5
Y		N							
		1	Credit 1.1	Innovation in Design: Exemplary Performance Heat Island Redctn				1	
		1	Credit 1.2	Innovation in Design: Exemplary Performance Water Efficiency				1	
		NA	Credit 1.3	Innovation in Design: Specific Title				1	
		NA	Credit 1.4	Innovation in Design: Specific Title				1	
1			Credit 2	LEED™ Accredited Professional				1	

* These points are highly dependent on the contractor's efforts and documentation

Power Distribution Headquarters

Presented by:

Ron Moattar

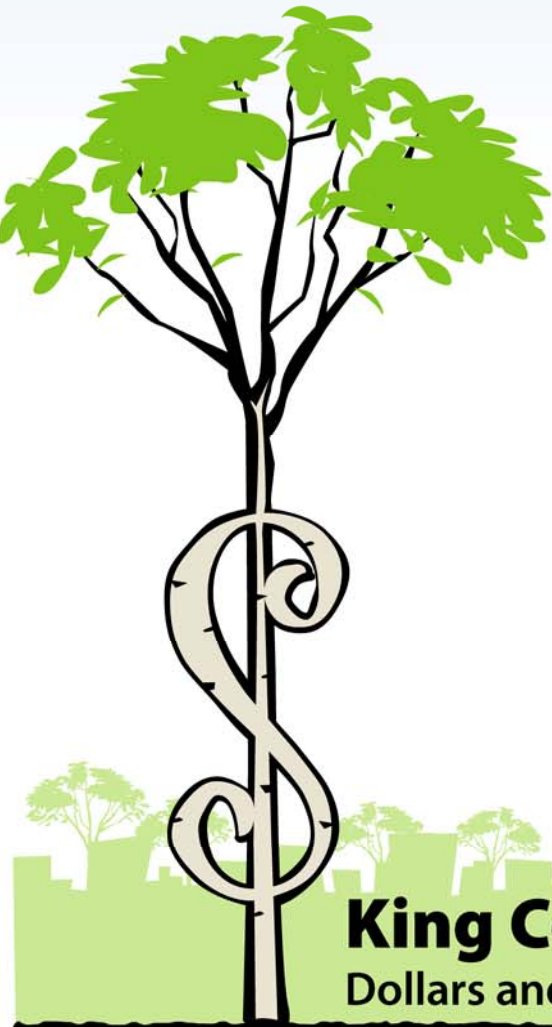
King County

Department of Transportation

Transit

Design & Construction

Project Manager



King County Building Summit:

Dollars and Sense Tools to Green Your Project

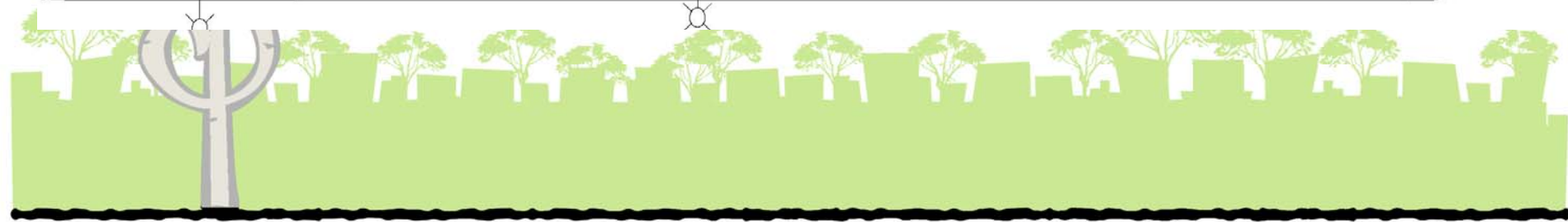
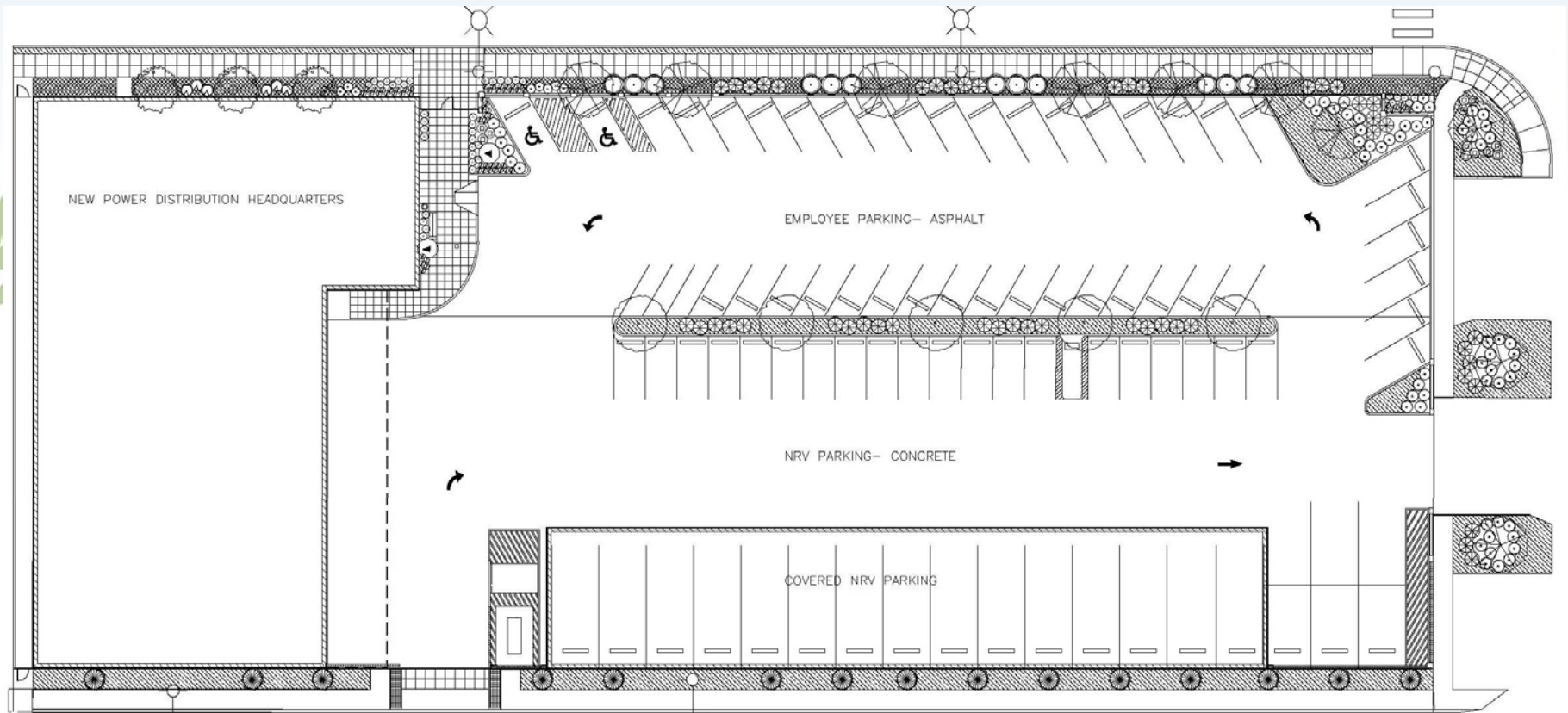


King County

Power Distribution Headquarters



Power Distribution Headquarters



Power Distribution Headquarters



Power Distribution Headquarters



Power Distribution Headquarters



MACBE – Tire Shop

Presented by:

Ken Tarp

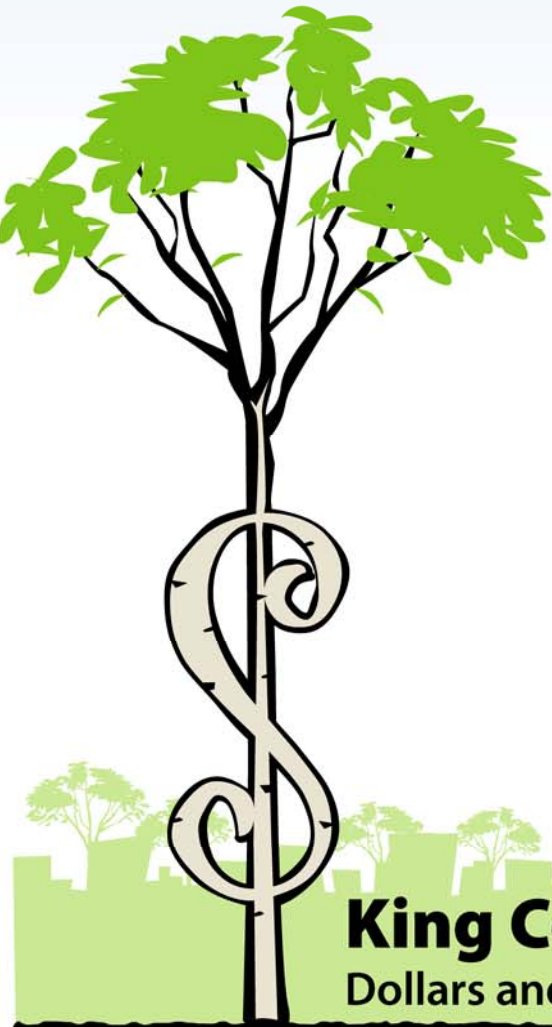
King County

Department of Transportation

Transit

Design & Construction

Project Manager



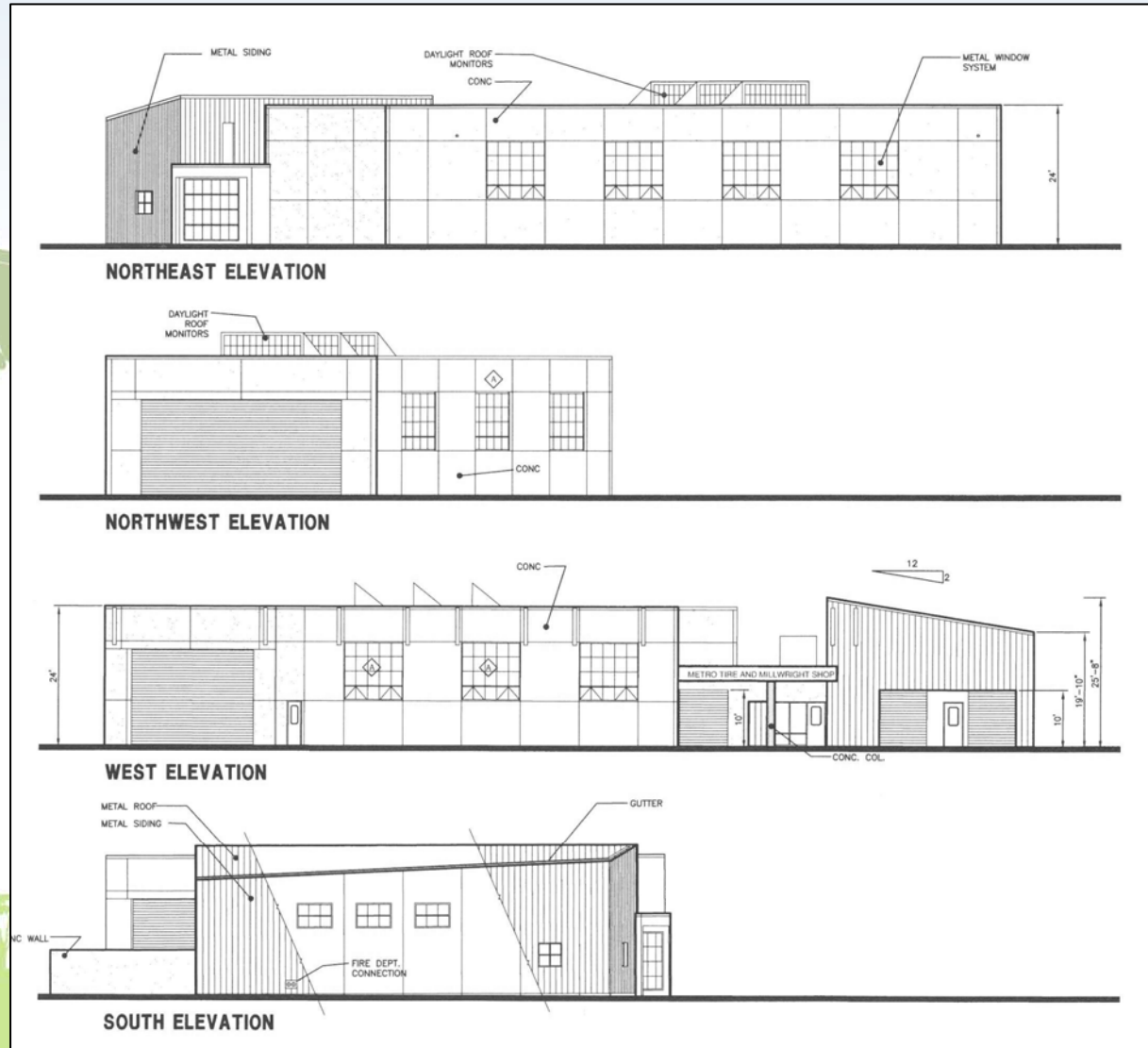
King County Building Summit:

Dollars and Sense Tools to Green Your Project

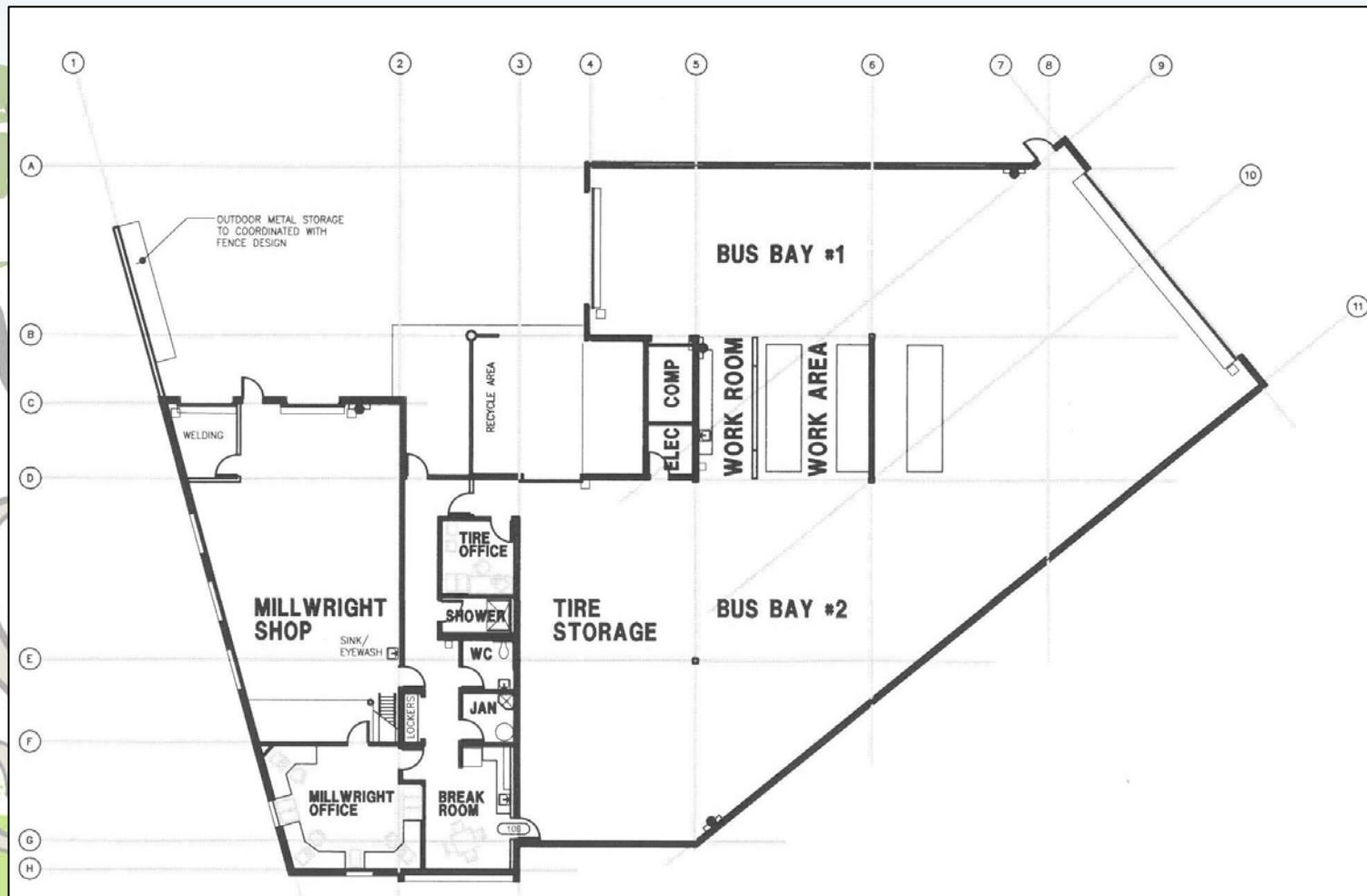


King County

Tire Shop



Tire Shop

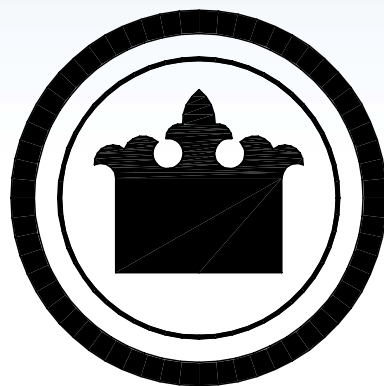


Tire Shop



Tire Shop





KING COUNTY

