



2019 King County Work Plans

**Southeast King County
Community Service Area**



King County
Local Services

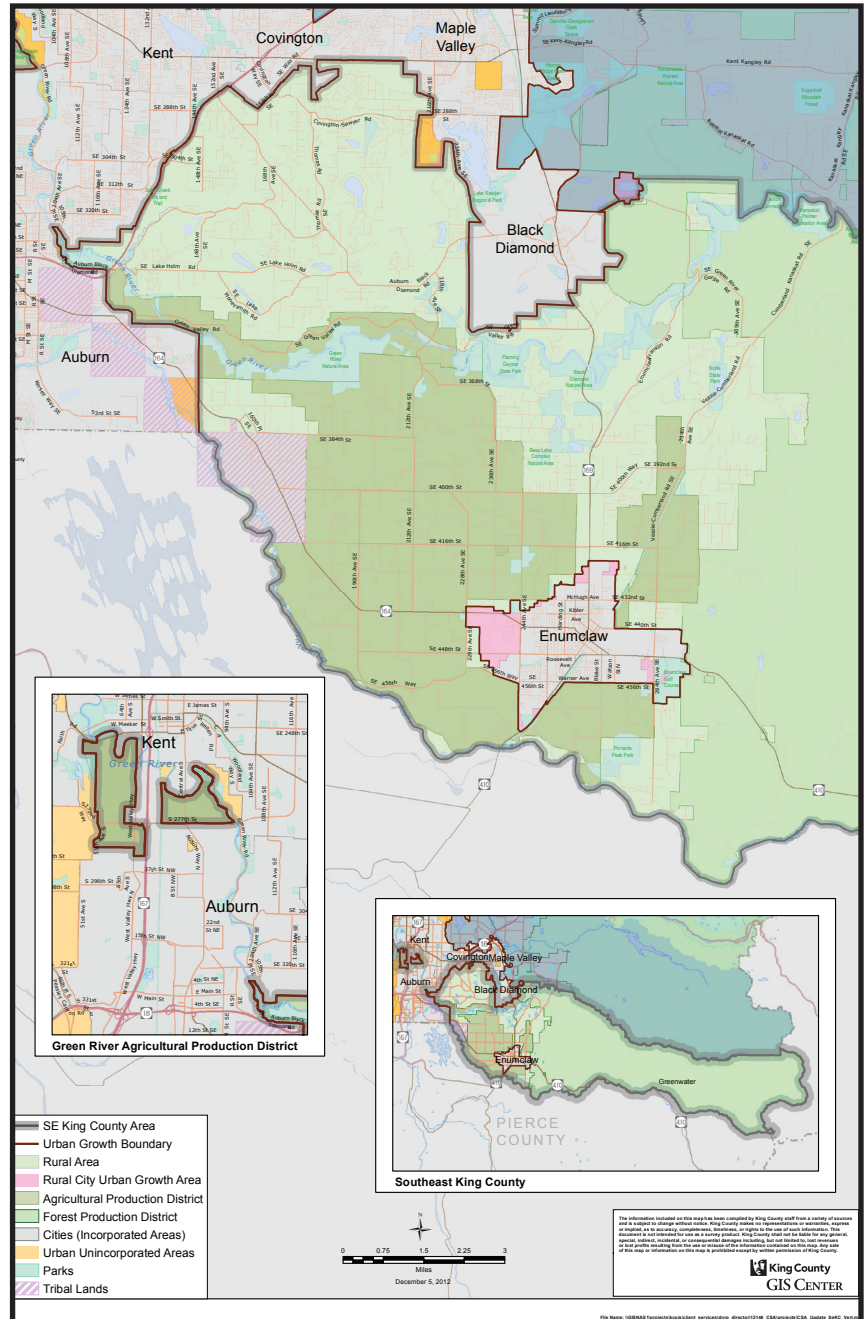
<https://kingcounty.gov/local-services>
AskLocalServices@kingcounty.gov

SOUTHEAST KING COUNTY COMMUNITY SERVICE AREA

Southeast King County Rural area south of Maple Valley, Covington, and Black Diamond and east of Auburn. Surrounds Enumclaw. The northeastern part has the lower and middle Green River basins and includes the Middle Green River Valley Agriculture Production Districts and Hanging Gardens, Kanaskat-Palmer, Nolte, and Flaming Geyser state parks. To the south and slightly east of the river basins is the Enumclaw Plateau. The land further to the east is forested and includes part of the Mount Baker-Snoqualmie National Forest.

CONTENTS

- 4 Assessor's Office
- 4 Community & Human Services
- 6 King County Elections
- 7 Executive Office
- 8 Executive Services
- 9 Local Services
- 10 Metro
- 11 Natural Resources & Parks
- 20 Public Health, Seattle & King County
- 21 Sheriff's Office





Welcome to the King County work plan for the Southeast Community Service Area of King County. This document includes current work plans, initiatives, ongoing projects, and completed projects of King County departments and separately elected offices in your community.

We include contact information for the projects in case you would like further details on specific projects or initiatives.

King County's Department of Local Services brings representatives of King County government together with residents of unincorporated King County. In addition to the following work program, the Local Services team hosts a series of town hall meetings throughout unincorporated King County and offers small grants to community organizations that serve the residents of unincorporated King County. For more information, visit our website: <https://kingcounty.gov/depts/local-services/community-service-areas.aspx>

You can find more information about King County on the county's website: <https://kingcounty.gov>

For specific information about initiatives lead by the King County Executive, including becoming the nation's best-run government, confronting climate change in King County, building equity and opportunity for all, and strengthening our regional transit mobility, visit the Executive's website: <https://kingcounty.gov/elected/executive/constantine.aspx>

Your community is represented on the King County Council by Councilmember Reagan Dunn, District 9. You can reach him via the King County Council website (<https://kingcounty.gov/council.aspx>) or by phone (206-477-1009) or email (reagan.dunn@kingcounty.gov).

Thank you for your interest in the many projects and initiatives underway in your community.

John Taylor
Director, Department of Local Services
asklocalservices@kingcounty.gov
206-477-3800

ASSESSOR'S OFFICE

Property Assessments

2019 Property Valuation and Tax Update

- Provide information on how eligibility for the property tax relief programs senior citizens, individuals with disabilities, and veterans have expanded this year due to legislative action, and help qualified property owners take advantage of those programs.
- Provide proactive workshops on property tax relief programs, with an emphasis on senior citizen property tax exemptions. Assessor's staff will be available at these workshops to help community members understand the requirements for property tax relief and to register them for the programs if they qualify.
- Provide detailed valuation and property tax updates for property owners and residents in the unincorporated community service areas.
- Provide a Taxpayer Transparency Tool on our website so residents in the unincorporated community service areas will have information on how proposed ballot measures will affect their property taxes.
- Provide physical inspection schedules for all unincorporated community service area neighborhoods and increase public education about the Washington State revenue system at unincorporated community service area community meetings.

Contact: 206-296-7300 or Assessor.info@kingcounty.gov

COMMUNITY & HUMAN SERVICES

The Department of Community and Human Services provides a wide range of programs and services to help people improve their health and well-being and strengthen local communities.

Mission: Provide equitable opportunities for people to be healthy, happy, self-reliant and connected to community.

ONGOING SERVICES

Adult Services Division

Older Adults Program: Funds senior centers nearest to, and serving residents of, the unincorporated areas with services like exercise, nutrition, job coaching, health care access and social activities to eliminate isolation. Funding from the Veterans, Seniors and Human Services Levy provided small grants to senior centers across King County in 2018 to fund upgrades like improved disability accessibility, new computer systems, physical repairs, training, and technical assistance. Funding in 2019 will establish senior "hubs" for services for older adults and their caregivers at multiple locations in King County.

King County Veterans Program: Funds shelter, housing, emergency financial assistance, employment training and coaching, counseling, family services, and more for veterans, military personnel, and their families. Two locations: Seattle and Tukwila. Contact: King County Veterans Information and Assistance Call Center, 877-904-8387 or 2-1-1 or 206-477-8282 (Seattle) or 206-477-7022 (Tukwila).

<https://kingcounty.gov/veterans.aspx>

Vulnerable Populations Program: Civil Legal Aid: Provides legal assistance to help people with issues relating to domestic violence, sexual assault, and housing (including eviction prevention), aid for refugees or immigrants, and help accessing benefits. Domestic Violence Services: Funds services and service providers throughout King County. Sexual Assault Services: For information call 2-1-1 or the 24-hour Sexual Assault Resource line: 1-888-998-6423. Treatment is available for all county residents at Harborview Medical Center for Sexual Assault and Traumatic Stress in Seattle (206-744-1600) or King County Sexual Assault Resource Center in Renton (425-226-5062). Employment & Education Resources-Adult Programs: Employment and training to help low-income and unemployed workers and people who are homeless and seeking employment to restabilize their lives (Career Connections), and adults age 18 and older with previous involvement in the criminal justice system who are experiencing barriers to employment (King County Jobs Initiative). Contact Yanika (Nikka) Lemons (206-263-9064).

Behavioral Health & Recovery Division

Behavioral Health Services: Funds mental health and substance use disorder prevention and treatment

Community & Human Services cont'd.

services, primarily through contracts with local community-based treatment provider agencies located throughout the region. Services include 24-hour crisis outreach, investigation for involuntary commitment and inpatient and outpatient treatment services. Contacts: 1-866-4CRISIS (24-hour helpline for suicide prevention), Behavioral health and Recovery Client Services lines (206-263-8997 or 1-800-790-8049) for help with assessment and referral. Website: <https://kingcounty.gov/depts/community-human-services/mental-health-substance-abuse.aspx>

Children, Youth & Young Adults Division

Provides and funds promotion, prevention, and early intervention services for children and youths aged 5-24; youth/young adult education and employment services; and a range of justice system alternatives for youths with prior involvement in the juvenile justice system. This includes YouthSource, Youth and Family Services Program, and other programs that serve to re-engage youths who have dropped out of school to complete their education and build a career path for a stable financial future. Other programs seek to connect children and youths to programs and services (e.g., Screening, Brief Intervention and Referral to Treatment) that seek to intervene at points in childhood and adolescence where developmental, societal or environmental issues or problems first occur with the goal of quick, targeted, and early intervention and positive development. Contacts: <https://www.kingcounty.gov/beststarts>
Contact: Sheila Capestany (206-263-7823 or sheila.apestany@kingcounty.gov)

Developmental Disabilities and Early Childhood Supports Division

Supports persons of all ages with developmental disabilities and their families to lead full, integrated and productive lives, services for infants and toddlers with developmental delays, employment support for youths (School to Work) and adults, Community Access services for people with disabilities, and community information, outreach, and referral for people with disabilities and their families. With funding from Best Starts for Kids, the division is also providing Universal Developmental Screening for children from birth to age 5 and assessment and referrals for infant mental health to identify any developmental issues as early as possible.

Contact: Magan Cromar (206-263-9105 or magan.cromar@kingcounty.gov) <https://kingcounty.gov/ddd>

Housing, Homelessness and Community Development Division

<https://kingcounty.gov/depts/community-human-services/housing.aspx>

Housing Capital Projects: Provides financing to nonprofit organizations or housing authorities to create affordable housing for low-income and vulnerable populations throughout King County.

Contact: Jackie Moynahan (206-477-7524 or jackie.moynahan@kingcounty.gov)

Homelessness: Funds homeless shelters throughout the region, homeless prevention and diversion programs, rapid re-housing programs, and other emergency assistance.

Contact: Kate Speltz (206-263-9084 or kate.speltz@kingcounty.gov)

Coordinated Entry for All: Individual assessments and assistance in linking to shelter, support services, and housing. Contact: (206-328-5796 or cea@kingcounty.gov) <https://kingcounty.gov/cea>

Housing Repair Program: Provides low-to-moderate income owner-occupied residences with repairs (e.g., plumbing, electrical, roofs), weatherization, and disability accommodations (e.g., walk in showers, wheelchair ramps, grab bars). Program objective is to help lower-income families maintain their housing and help seniors and veterans age safely in place to prevent homelessness.

Contact: Clark Fulmer (206-263-9087 or clark.fulmer@kingcounty.gov)

<https://kingcounty.gov/HousingRepair>

Community Development: Capital project funding serves to revitalize neighborhoods (parks, playgrounds, sidewalks) and improve living conditions for low to-moderate income residents and communities.

Contact: (206-263-9105 or <http://www.kingcounty.gov/cdbg>)

ANOTHER PROJECT OF NOTE

Communities of Opportunity: A network of residents, communities, decision-makers, and funders who believe every community can be healthy and thriving—and that equity and racial justice are both necessary and achievable. Supported by an innovative public-private partnership between King County (through Best Starts for Kids) and the Seattle Foundation to improve the health and well-being of communities across King County. The program works to achieve more equitable community conditions through community partnerships in geographic and cultural communities, systems and policy change,

Community & Human Services cont'd.

and shared learning. It coordinates opportunities for learning, capacity building, and technical assistance available to a wide range of community organizations. Investments are bringing partnerships together in White Center, SeaTac/Tukwila, Kent, rural Snoqualmie Valley, Seattle's Rainier Valley and Central District, within Vashon's Latinx community, the Seattle urban Native community, and the LGBTQ community, to support and test community-driven solutions. In addition, a diverse group of more than 50 organizations across the county received grants to engage in systems/policy work that influences health, social, economic and racial equity.

Contact: Andrea Akita (206-477-4203 or andrea.akita@kingcounty.gov). <https://kingcounty.gov/COO>

KING COUNTY ELECTIONS

King County has nearly 1.3 million registered voters. It is the largest county in the country to vote entirely by mail and home to one third of Washington State's voters. King County Elections conducts accurate, secure and accessible elections, providing an important opportunity for county voters to participate in their government.

Key priorities for the department include partnering with organizations like the Department of Homeland Security to ensure election security, removing barriers to voting by adding more ballot drop boxes and providing prepaid postage, and ensuring high-quality customer service.

All ballots are processed on the second floor of the Department's Renton headquarters using field-leading technology and security practices. The facility is open to the public and visitors are welcome to observe anytime ballots are being processed.

King County produces all voting materials in English, Chinese, Korean, Spanish and Vietnamese. The county also employs a full-time translation staff to assist voters.

Voter Registration: available online at kingcounty.gov/elections as well as in-person at:

| | |
|--|---|
| King County Elections Headquarters | Elections Annex King County Administration Building |
| 919 SW Grady Way | 500 4th Avenue, Room 440 |
| Renton, WA 98057 | Seattle, WA 98104 |
| 206-296-VOTE (8683) elections@kingcounty.gov | |

Drop Box Locations:

Enumclaw Library - 1700 1st Street, Enumclaw

Muckleshoot Tribe - Philip Starr Building - 39015 172nd Avenue SE, Auburn

Auburn Library - 1102 Auburn Way South, Auburn

Auburn Park & Ride - 101 15th Avenue SE, Auburn

Covington Library - 27100 164th Avenue SE, Covington

Highline College - 2400 S 240th Street, Des Moines

Regional Justice Center - 401 4th Avenue N, Kent

Tahoma School District - 25720 Maple Valley Black Diamond Rd SE, Maple Valley

2019-2020 Election Dates:

August 2019 Primary Election

July - 17 – Ballots and voters' pamphlet mailed. Vote center at King County Elections opens.

July 29 – Deadline to register or update your information online or by mail. Additional vote centers open.

Aug. 6 – Election Day. Ballots must be postmarked by today or returned to a ballot drop box by 8 p.m. Voters can register and vote in-person until 8 p.m.

November 2019 General Election

Oct. 16 – Ballots and voters' pamphlet mailed. Vote center at King County Elections opens.

Oct. 28 – Deadline to register or update your information online or by mail. Additional vote centers open.

Nov. 5 – Election Day. Ballots must be postmarked by today or returned to a ballot drop box by 8 p.m. Voters can registration and vote in-person until 8 p.m.

February 2020 Special Election

Jan. 22 – Ballots and voters' pamphlet mailed. Vote center at King County Elections opens.

Feb. 3 – Deadline to register or update your information online or by mail.

Feb. 11 – Election Day. Ballots must be postmarked by today or returned to a ballot drop box by 8 p.m. Voters can registration and vote in-person until 8 p.m.

March 2020 Presidential Primary Election

Feb. 19 – Ballots and voters' pamphlet mailed. Vote center at King County Elections opens.

Mar. 2 – Deadline to register or update your information online or by mail. Additional vote centers open.

Mar. 10 – Election Day. Ballots must be postmarked by today or returned to a ballot drop box by 8 p.m. Voters can registration and vote in-person until 8 p.m.

Elections cont'd.

April 2020 Special Election

April 8 – Ballots and voters' pamphlet mailed. Vote center at King County Elections opens.

April 20 – Deadline to register or update your information online or by mail.

April 28 – Election Day. Ballots must be postmarked by today or returned to a ballot drop box by 8 p.m. Voters can registration and vote in-person until 8 p.m.

2019-2020 Election Dates:

August 2019 Primary Election

July - 17 – Ballots and voters' pamphlet mailed. Vote center at King County Elections opens.

July 29 – Deadline to register or update your information online or by mail. Additional vote centers open.

Aug. 6 – Election Day. Ballots must be postmarked by today or returned to a ballot drop box by 8 p.m. Voters can register and vote in-person until 8 p.m.

November 2019 General Election

Oct. 16 – Ballots and voters' pamphlet mailed. Vote center at King County Elections opens.

Oct. 28 – Deadline to register or update your information online or by mail. Additional vote centers open.

Nov. 5 – Election Day. Ballots must be postmarked by today or returned to a ballot drop box by 8 p.m. Voters can registration and vote in-person until 8 p.m.

February 2020 Special Election

Jan. 22 – Ballots and voters' pamphlet mailed. Vote center at King County Elections opens.

Feb. 3 – Deadline to register or update your information online or by mail.

Feb. 11 – Election Day. Ballots must be postmarked by today or returned to a ballot drop box by 8 p.m. Voters can registration and vote in-person until 8 p.m.

March 2020 Presidential Primary Election

Feb. 19 – Ballots and voters' pamphlet mailed. Vote center at King County Elections opens.

Mar. 2 – Deadline to register or update your information online or by mail. Additional vote centers open.

Mar. 10 – Election Day. Ballots must be postmarked by today or returned to a ballot drop box by 8 p.m. Voters can registration and vote in-person until 8 p.m.

April 2020 Special Election

April 8 – Ballots and voters' pamphlet mailed. Vote center at King County Elections opens.

April 20 – Deadline to register or update your information online or by mail.

April 28 – Election Day. Ballots must be postmarked by today or returned to a ballot drop box by 8 p.m. Voters can registration and vote in-person until 8 p.m.

EXECUTIVE OFFICE

Executive Office - Performance, Strategy & Budget (PSB)

Budget: King County uses a biennial (two-year) budget, and the 2019-2020 budget was adopted in November 2018. It totals \$11.7 billion, with a General Fund budget of \$1.86 billion, and budget reflects several reorganizations, including the new departments of Metro Transit, Local Services, and Human Resources. The King County Airport and the Fleet Services Division have been moved to the Department of Executive Services. Because of prudent financial practices and the strong regional economy, no significant service reductions were required and several expansions of services were included.

Looking ahead, revenue limitations imposed by the state will continue to adversely affect the General Fund, Public Health Fund, and Roads Fund. The Roads Fund is stable for 2019-2020 but has far less money than is needed to maintain the existing road system. Current projections suggest that no money will be available for Roads capital projects by 2025. PSB continues to support tax reform efforts to address these long-term financial problems.

Contact: Dwight Dively (206-263-9687 or dwight.dively@kingcounty.gov)

Contact: Aaron Rubardt (206-263-9715 or aaron.rubardt@kingcounty.gov)

Continuous Improvement: PSB continues to use the Lean continuous improvement methodology to transform the systems, tools, processes, and culture in county operations to drive greater efficiency and effectiveness in the services and products we provide to our communities.

Contact: Gary Kurihara (206-263-8026 or gary.kurihara@kingcounty.gov)

Executive Office cont'd.

Performance & Strategy: PSB continues to use proven management tools such as strategic planning, performance measurement, public performance reporting, visual management, and Executive performance reviews to align key county priorities, ensure accountability for strategic and operational performance, and to communicate to the public how the county is doing on delivering effective, efficient, and equitable services. A new public performance reporting portal should be available in fall 2019.

The Criminal Justice Strategy and Policy Section is leading an effort to identify potential efficiencies in the criminal justice system and has a \$2 million budget to make investments to achieve such efficiencies. The section is also providing critical support to the Executive's Zero Youth Detention initiative.

Contact: Michael Jacobson (206-263-9622 or michael.jacobson@kingcounty.gov)

EXECUTIVE SERVICES

Records and Licensing Services (RALS)

Community Service Centers: The King County Community Service Center Program works to make it easier to get common tasks done via sites located throughout the county. Service offerings vary by location, so check kingcounty.gov/CSC or call ahead before visiting. CSC services may include:

- Certified copies of recorded documents, including marriage certificates
- King County property tax payments Washington State marriage license applications
- King County pet license applications and renewals
- U.S. passport applications
- Information on other county services and programs such as senior property tax exemptions, assessment appeal forms, property assessment information, transit information, and King County job listings and applications

Issaquah Community Service Center

5415 220th Avenue SE (inside the Issaquah District Court building), Issaquah

Contact: 206-477-2169 | Hours: Wednesdays and Thursdays, 8:30 a.m. - 4:30 p.m.

Kent Community Service Center

401 Fourth Avenue N., Suite GD (inside the Maleng Regional Justice Center building), Kent

Contact: 206-477-4880 | Hours: Mondays and Tuesdays, 8:30 a.m. - 4:30 p.m.

Black River (Renton) Community Service Center

919 SW Grady Way (inside the King County Elections building), Renton

Contact: 206-477-4881 | Hours: Monday thru Friday, 8:30 a.m. - 4:30 p.m.

Note: Passport application processing ends at 4 p.m.

Seattle Downtown King County Administration Building

500 Fourth Avenue, Seattle, WA

Contact: 206-477-6620 | Hours: Monday through Friday: 8:30 a.m. - 4:30 p.m.

Shoreline Community Service Center

18050 Meridian Avenue N. (inside the Shoreline District Court building), Shoreline

Contact: 206-477-2723 | Hours: Fridays only, 8:30 a.m. - 4:30 p.m.

King County Recorder's Office (206-477-6620 or kingcounty.gov/CSC)

Regional Animal Services of King County: Provides service to all unincorporated areas of King County, as well as 24 contracting cities. Services include:

- Animal control response: kingcounty.gov/AnimalControl 206-296-7387 (PETS) or 9-1-1
- Pet licensing: kingcounty.gov/LicenseMyPet 206-296-2712 or PetLicense@kingcounty.gov
- Pet adoptions: kingcounty.gov/AdoptAPet 206-296-3936 or AdoptAPet@kingcounty.gov
- Lost and found pets: kingcounty.gov/LostAPet 206-296-7387 (PETS) or LostPets@kingcounty.gov
- Volunteer and foster program: kingcounty.gov/RASKCVolunteer, 206-225-4899 or Volunteers@kingcounty.gov
- Education and community outreach: 206-296-7387 (PETS) or Pets@kingcounty.gov

Emergency Management

Disaster planning and public alerts: A number of hazards – from earthquakes to severe weather – threaten Western Washington. There are specific things residents can do to stay safe and protect property during these sometimes devastating conditions. King County Emergency Management provides disaster preparedness resources, tips, and checklists in multiple languages. Community disaster skills workshops are offered at no charge throughout the year at community centers and libraries throughout King County. For more information, visit kingcounty.gov/prepare or call 206-296-3830. Emergency Management also administers regional public alerts by text, email, and phone to help residents stay safe and informed about potential hazards and threats. Sign-up is free at kingcounty.gov/ALERT.

3511 NE Second Street, Renton

Contact: 206-296-3830 or KCOEMPubEd@kingcounty.gov

LOCAL SERVICES

Local Services became a stand-alone King County department at the start of 2019. Led by Director John Taylor, the 500-employee agency now focuses solely on serving and communicating with people and communities in the unincorporated areas of the county.

King County has always delivered critical services to residents and businesses in these areas, but the new department now serves as a “virtual city hall” to coordinate the delivery of those services.

The department has three programs that are already familiar to those in unincorporated areas:

- The Permitting Division handles development permits, code enforcement, and subarea planning.
- The Road Services Division maintains 1,500 miles of county roadway and 182 bridges.
- The Community Service Areas program provides tailored planning, outreach, and other county services to unincorporated areas via seven Community Service Areas.

Contact us

- Questions or comments: ASKLocalServices@kingcounty.gov or 206-477-3800
- Local Services website: <https://kingcounty.gov/local-services>
- Local Services on Instagram/Facebook: @kingcountylocalservices
- Permitting Division: DPERWebinquiries@kingcounty.gov or 206-296-6600

Road Services: call the 24/7 Road Helpline at 206-477-8100 or 800-527-6237 (800-KCROADS), or email maint.roads@kingcounty.gov

ROADS SERVICES

COUNTYWIDE PROJECTS AND PROGRAMS

2017-2018 Countywide Guardrail: Existing guardrail and guardrail end terminals will be upgraded to make the roads safer and potentially reduce the severity of crashes. Construction began April 22, 2019, and will continue through the end of summer/beginning of fall. Most work will require lane restrictions rather than full closures.

2019 Pavement Preservation: Extends the useful life of existing roadways by repairing defects in pavement and sealing the road foundation from weather damage. The work will begin later this spring or early this summer and continue into the fall. Work is highly weather dependent.

<https://kingcounty.gov/depts/local-services/roads/paving-projects.aspx>

218th Ave SE Road Reconstruction, from Auburn Black Diamond Rd to Green Valley Rd- Roads: is designing a project to reconstruct 1.36 miles of 218th Ave SE from SE Auburn Black Diamond Road to SE Green Valley Road. This includes excavating and replacing the roadway base, rebuilding the road with required drainage, and overlaying and striping the road, including the shoulder area. Design is estimated to be complete by end of 2020. Construction may begin as early as 2021.

Coal Creek Bridge #3035A Replacement: Roads is designing a replacement for Coal Creek Bridge #3035A, which has been affected by new federal requirements. These requirements have resulted in restrictions on heavy vehicles, which pose public safety concerns if not promptly and systematically addressed. Preliminary design is estimated to be completed in 2020.

S 277th St. Bridge #3126 Bridge Replacement: In 2019, Roads will be starting design of a replacement for the S 277th Street Bridge #3126, which has been affected by new federal requirements. These require-

Local Services cont'd.

ments have resulted in restrictions on heavy vehicles, which pose public safety concerns if not promptly and systematically addressed.

Covington Creek Bridge #3085 Re-decking: Located just outside of the City of Covington on Covington Way, this bridge re-decking project is tentatively planned for August. It will require a full closure, and may include weekend work. Weekend work will help decrease the amount of total time traffic is disrupted. If weekend work occurs, the full closure may only need to be in place for three days.

Overflow Channel Bridge #3217 Re-decking: Located between Auburn and Kent, this bridge re-decking project is tentatively planned for August. The duration will be approximately one week and traffic will be flagged through the lane restriction.

Sawyer Wood Elementary School Zone Safety Improvement: Located at Sawyer Wood Elementary, this school zone safety improvement will install flashing beacons and signs. Possibility of lane closures during summer construction.

Thunder Mountain Middle School Zone Safety Improvement: Located at Thunder Mountain Middle School, this school zone safety improvement will implement flashing beacons and signs. Possibility of lane closures during summer construction.

ONLINE RESOURCES

24/7 Road Helpline: In unincorporated King County, contact us for help with road maintenance and traffic safety issues, such as downed stop signs, signals that are out or trees over the roadway – 24 hours a day, seven days a week. Contact: 206-477-8100 or 800-527-6237 | maint.roads@kingcounty.gov

My Commute: Travel tools and resources for the greater Puget Sound area – commuting resources, road closures, restrictions, and traffic cameras.

<https://kingcounty.gov/mycommute> | webteam.roads@kingcounty.gov

Road Alert: Find travel alert information about road closures or conditions that have significant impact on roads in unincorporated areas of King County. Email subscriptions available.

<https://kingcounty.gov/roadalert> | webteam.roads@kingcounty.gov

PERMITS

The Department of Local Services, Permitting Division is the agency that provides land use, building and fire regulatory and operating permits, code enforcement and a limited number of business licenses for unincorporated areas of King County.

Department of Local Services, Permitting Division

Contact: 206-296-6600 | DPERWebinquiries@kingcounty.gov

35030 SE Douglas Street, Suite 210, Snoqualmie

Mon, Tues, Thur, Fri: 7:30-11:30 am & 1:00-3:00 pm

Wednesday: Closed

METRO

Income-based fare program: Metro has a variety of fares to make transit service more affordable and accessible, but has heard from customers that the fare is still a barrier for some residents. To address these concerns, the King County Council asked Metro to establish an income-based fare program for residents with no and very low incomes and to implement the new program by March 2020.

Metro is working with a stakeholder advisory group and engaging with customers to develop program options that address the affordability needs of customers with no and very low incomes. The stakeholder advisory group will convene in late June to consider these options, and Metro will submit an implementation report to the King County Council in September.

This work is intended to address the affordability issue for residents with the lowest incomes, but through this effort, Metro has heard about other barriers including access to service and knowledge about current reduced-fare programs. Metro is using that feedback to improve programs and systems through the long-range METRO CONNECTS plan.

Contact: Lindsey Greto (206-263-7886 or lindsey.greto@kingcounty.gov)

Metro cont'd.

Metro currently operates two routes along the Auburn-Enumclaw Road (SR-164), serving this portion of the CSA between Enumclaw and Auburn. Service operates to/from the Auburn Station, with connections to Sounder rail and other transit routes.

Route 186: Provides peak period commuter service, Monday-Friday, about every 30-60 minutes

Route 915: Provides off peak service, Monday-Friday about every 60 minutes and on Saturday about every 90 minutes. In March 2016, the weekday service frequency on Route 915 was improved, from 90 minutes to about every 60 minutes, as this had been one of the recommendations from the SE King County Alternatives Service project.

Black Diamond-Enumclaw Community Ride: Operated by Hopelink, this reservation-based service runs Monday to Friday between 6:30 a.m. and 8:00 p.m. It serves parts of Black Diamond and Enumclaw, and also connects the two cities via Highway 169. Rides must be reserved at least two hours (or up to 30 days) before desired pickup time. For more information, search “Community Ride” on Metro’s schedule page. In 2018, the service span for this service was extended from 4:30 p.m. to 8:00 p.m.

NATURAL RESOURCES & PARKS

PARKS

Future Funding for King County Parks: The 2020-2025 King County Parks, Recreation, Trails, and Open Space Levy ballot measure is a property tax levy lid lift that would replace the current parks levy expiring at the end of 2019. It would fund operations and maintenance of King County’s parks and trails, support the growth and connection of regional trails, and establish grant programs to expand access to recreation and protect open space for King County residents. Proceeds from the levy would also directly support parks in King County’s cities, as well as the Woodland Park Zoo and the Seattle Aquarium. This measure will be on the August 6, 2019 primary election ballot.

Contact: Kathryn Terry (206-477-4526 or kathryn.terry@kingcounty.gov) or see <https://kingcounty.gov/parks/levy>

Parks Customer Service and Outreach: Parks is piloting a new mobile and online tool called SeeClick-Fix for park and trail visitors to report issues and make suggestions.

Contact: Rogelio Diaz (206-477-4527 or rodiaz@kingcounty.gov)

Cougar Mountain Trailhead Parking Lot: King County Parks will be developing a parking lot at the Cougar Precipice Trailhead along NW Newport Way in Issaquah. A 40 car asphalt parking lot will replace the existing gravel pull-off, which currently accommodates 3-4 cars. The new parking lot will include a restroom, trailhead kiosk and signage, picnic tables and a bike rack, landscape restoration and trailhead connections. The parking lot design is being coordinated with the City of Issaquah in relation to their future improvements along NW Newport Way. The project is currently in permitting and design, with construction anticipated to begin Spring 2020 once permits are approved.

Contact: Linda Frkuska (206-477-4484 or linda.frkuska@kingcounty.gov)

Acquisitions: King County Parks was awarded funding to protect forests and rivers throughout SE King County, including additions to Bass Lake Complex Natural Area, Deep Lake and Newaukum Creek. This was the first year (2019) of funding from the Land Conservation Initiative.

In 2018, King County Parks purchased Little Lake Forest, formerly owned by Lady Vera Dyar. This property is 155 acres just outside the city limits of Enumclaw, and serves not only as a beautiful gathering space for the community, but as a public entry to the privately owned Tomanamus Forest.

King County Parks hosted a public meeting in April 2019 to collect feedback on a community vision for Little Lake Forest. Over ninety members of the community attended and provided input. Suggestions focused on creating a safe space for everyone to use, including families and people with disabilities, as well as user groups, while maintaining the natural beauty of the site.

Contact: Daphne Payne (206-477-3391 or daphne.payne@kingcounty.gov)

Restoration Highlights: Newaukum Creek, a key creek for salmon spawning and rearing, was affected by past dredging and vegetation bank removal resulting in unhealthy temperatures and oxygen conditions. King County DNRP will be restoring conserved areas through native vegetation planting and encouraging the river to meander in a more natural flow.

Parks cont'd.

King County DNRP is continuing its efforts of preserving the Green River from Kent to Kanaskat, restoring river banks along the almost 30 mile stretch. Restoration projects to vegetate the banks along Whitney Bridge Park have already begun at this site.

Contact: Daphne Payne (206-477-3391 or daphne.payne@kingcounty.gov)

Foothills Trail: In 2019, King County Parks will begin construction of an approximate 1-mile stretch of the Foothills Trail from Enumclaw to the historic Boise Creek Bridge. The 2020-2025 Parks Levy ballot measure includes closing the Foothills Trail “gap” between the cities of Enumclaw and Buckley going from the Boise Creek Bridge to Buckley by constructing a pedestrian bridge with emergency vehicle loading capacity over the White River. The construction would also include the two respective trail approaches to the river and would connect to the existing 21-mile Foothills Trail and regional trails system within Pierce County.

Contact: Chris Erickson (206-477-4564 or Chris.Erickson@kingcounty.gov)

Pinnacle Peak Park: At Pinnacle Peak Park, the Mt. Peak Historical Fire Lookout Association, a Community Partnerships and Grants Program partner, with King County Parks, is in the process of planning and gaining approval to build a replica of the fire lookout tower that once stood at the top of the mountain. If approved, construction could happen as soon as summer 2020.

Contact: Scott Thomas (206-477- 4586 or scott.thomas@kingcounty.gov)

Pinnacle Peak Trailhead and Parking Lot: King County Parks completed construction of a trailhead, parking lot and a pedestrian bridge connecting to the existing trail system at Pinnacle Peak Park in 2018. The parking lot and trailhead is accessible from SE Mud Mountain Road and will provide convenient off-road access for park users. The parking lot accommodates approximately 50 cars and ten equestrian trailers with vehicles. New amenities include a pit toilet restroom, trailhead kiosk, site restoration, horse hitching posts, picnic tables and signage.

Contact: Linda Frkuska (206-477-4484 or linda.frkuska@kingcounty.gov)

ONGOING PROJECTS

On-going maintenance and easement monitoring: King County Parks performs on-going maintenance of Green River Natural Area, Bass Lake, Black Diamond Open Natural Area, Covington Park, Little Lake Park, Pinnacle Peak, Lower Newaukum, Enumclaw Foothills Trail, Flaming Geyser, Whitney Bridge, Auburn Narrows and other park facilities within the service area, as well as on-going conservation easement monitoring, and assisting with the development of the Green River to Cedar River Trail. Community outreach has included many groups such as the Back Country Horsemen, Washington Trail Association, Green River Coalition, Muckleshoot Indian Tribe, Green River Landing Homeowner’s Association, Evergreen Mountain Bike Alliance, Washington State Parks and other user groups within the service area.

Contact: Nick Halverson (206-477-6138 or nick.halverson@kingcounty.gov)

Volunteer Program Events: Our Volunteer and Restoration Programs work together closely to improve the health, beauty and ecosystem functions of our parks and natural areas throughout the county. In addition to all of the service that volunteers contribute, our Restoration Program staff coordinate and perform invasive plant removal, restoration planting and other tasks. These programs planted 58,700 native plants, and over 52,000 of these were trees planted in 2018, working towards King County’s Million Tree Initiative.

Volunteers provide an average of 50,000 hours of service in our parks, trails and natural areas each year. From building and repairing backcountry trails to removing invasive and planting native plants to promoting recycling and composting at summer concerts, these volunteers are a vital part of the maintenance and improvement of the King County Parks system. These volunteers play an important role in stewarding our 28,000 acres of open space. Sign-up for the volunteer newsletter for a listing of scheduled events in the area at: [Volunteer - King County](#). Want to know what it’s like to volunteer with us? Check out our video: [Volunteer with King County Parks on Vimeo](#). If you, your group or business are interested in doing a volunteer project at your favorite King County Park site, we can work with you to plan a custom event. Please contact Volunteer Program Manager Lina Rose for custom events and any additional volunteer service opportunities in King County Parks.

In 2019, the Volunteer and Restoration Program sites include: Big Spring/Newaukum Natural Area, Bass Lake Complex (Dandy Lake), Green River Natural Area, Pinnacle Peak and Little Lake Forest.

Parks cont'd.

Our Volunteer and Restoration Programs work together closely to improve the health, beauty and ecosystem functions of our parks and natural areas throughout the county. In addition to all of the service that volunteers contribute, our Restoration Program staff coordinate and perform invasive plant removal, restoration planting and other tasks. These programs planted 58,700 native plants, and over 52,000 of these were trees planted in 2018, working towards King County's Million Tree Initiative.

Volunteers provide an average of 50,000 hours of service in our parks, trails and natural areas each year. From building and repairing backcountry trails to removing invasive plants and planting native plants to promoting recycling and composting at summer concerts, these volunteers are a vital part of the maintenance and improvement of the system. These volunteers play an important role in stewarding our 28,000 acres of open space. Signup for the volunteer newsletter for a listing of scheduled events in the area at: <https://Volunteer - King County> - Want to know what it's like to volunteer with us? Check out our video: <https://Volunteer with King County Parks on Vimeo>. If you, your group or business are interested in doing a volunteer project at your favorite King County Park site, we can work with you to plan a custom event.

The 2019 Volunteer and Restoration Program sites include: Log Cabin Natural Area, Cougar Squak Corridor Park, Cougar Mountain Regional Wildlife Park, and Mirrmont Park. The Washington Trails Association, the Nature Conservancy, and the Trust for Public Lands have been key partners. Other volunteer groups include Seattle Running Club, Homeschool Squad, WA Geocachers, Boeing, Tahoma Outdoor Academy, and Microsoft. New events and partners are currently being added. Contact: Lina Rose (206-477-6101 or lina.rose@kingcounty.gov)

Youth and Amateur Sports Grant Program: King County Parks administers the Youth and Amateur Sports Grants (YASG) program which promotes fit and healthy communities by investing in programs and capital projects that reduce barriers to access physical activity. Applications are open each January and awards announced in May.

Website: <https://kingcounty.gov/services/parks-recreation/parks/get-involved/partnerships-and-grants/yasg.aspx>

Contact: Butch Lovelace (206-477-4577 or butch.lovelace@kingcounty.gov)

Family Movie Nights: Join King County Parks for a special outdoor movie night at Ravensdale Park on Saturday, July 6. This is a free event, so bring your low-backed chairs, blankets, and snacks and enjoy a relaxed evening in the park. The movie will be projected onto a 40-foot tall inflatable movie screen so invite your friends, teammates and family -- we've got space!

King County Parks is partnering with the Si View Metropolitan Parks District, City of Snoqualmie, West Hill Community Association, City of Auburn, and the City of Carnation to support local and free outdoor cinema across King County.

Contact: Elizabeth Jessup (206-263-0584 or elizabeth.jessup@kingcounty.gov)

SOLID WASTE DIVISION

Time Limited 2019 projects that are scheduled for work and completion in 2019-20

Comprehensive Solid Waste Management Plan Update: On April 24, 2019, the King County Council approved the 2019 Comprehensive Solid Waste Management Plan. The next step in the adoption process is for King County's 37 partnering cities to approve it. Cities have 120 days (from 5/20/19 to 9/16/19) to act on the plan. City approval of the 2019 plan requires approval by cities representing three-quarters of the total population of the cities that act on the Plan during the 120-day period. An approved city/county plan will then be sent to the Washington State Department of Ecology for a final 45-day review and approval period. Final approval is expected by November 2019.

Website: <https://kingcounty.gov/depts/dnrp/solid-waste/about/planning/comp-plan.aspx>

Contact: Beth Humphreys (206-477-5264 or beth.humphreys@kingcounty.gov)

COMPLETED PROJECTS

New Area 8 Landfill Cell: For the past three years, the Solid Waste Division has been working on constructing a new landfill disposal cell at the Cedar Hills Regional Landfill, Area 8. Construction of Area 8 included excavating about two million cubic yards of soil and installing environmental controls for leachate and landfill gas collection. With construction complete, Area 8 will begin receiving garbage for disposal in July 2019.

ONGOING PROJECTS

Cleanup LIFT: Cleanup LIFT offers a \$12 discount for low-income customers on garbage, refrigerant, appliances and yard waste collection services at recycling and transfer stations. To receive the discount, customers show their ORCA LIFT, EBT, or Provider One cards when paying. The discount is good for each type of material, each visit.

Website: <https://kingcounty.gov/depts/dnrp/solid-waste/facilities/disposal-fees.aspx>

Waste Reduction and Recycling Outreach and Education

Recycle More/Recicla Mas: Education and outreach to single-family residents on how to recycle and compost more materials in curbside programs. Includes targeted outreach to the Spanish-speaking Latinx community in King County.

Website: <https://kingcounty.gov/depts/dnrp/solid-waste/garbage-recycling/recycle-more.aspx>

Facebook: <https://www.facebook.com/kcreciclamas>; <https://www.facebook.com/recyclemore>

K-12 Schools program: Assembly programs, classroom workshops, and assistance to student Green Teams.

Website: <https://kingcounty.gov/depts/dnrp/solid-waste/programs/education/secondary-school.aspx>

Green Schools Program: Helps more than 250 public and private K-12 schools and 13 school districts to initiate and improve waste reduction, recycling, energy and water conservation, and other conservation practices. Recognizes schools and school districts that complete criteria in the program's Best Practices Guides.

Website: <https://kingcounty.gov/depts/dnrp/solid-waste/programs/greenschools.aspx>

Recycling Collection Events: King County funding provided to cities and unincorporated areas to offer events for residents and businesses to recycle select materials.

Website: <https://kingcounty.gov/depts/dnrp/solid-waste/garbage-recycling/events.aspx>

EcoConsumer: Offering free community repair events in communities throughout King County. The EcoConsumer public outreach program also provides information and resources about waste reduction and other environmental concerns to the public and media through TV and radio segments, articles, presentations, social media and more.

Website: <https://kingcounty.gov/depts/dnrp/solid-waste/programs/ecococonsumer.aspx>

<https://KCecococonsumer.com>

Contact: Tom Watson (206-477-4481 or tom.watson@kingcounty.gov)

Green Tools: This green building program supports county agencies, cities, the building community, and the public in designing buildings and structures that have fewer impacts on the environment, are energy efficient, and use recycled materials.

Website: <https://kingcounty.gov/depts/dnrp/solid-waste/programs/green-building.aspx>

Construction & Demolition Waste (C&D): C&D recycling requirements have rolled out around the County – an informational presentation can be scheduled for your CSA by contacting

Website: <https://kingcounty.gov/depts/dnrp/solid-waste/programs/green-building/construction-demolition.aspx>

Contact: Kinley Deller or kinley.deller@kingcounty.gov)

LinkUp: Works with businesses, agencies and other organizations in the Puget Sound area to expand markets for selected recyclable and reusable materials.

Website: <https://kingcounty.gov/depts/dnrp/solid-waste/programs/linkup.aspx>

Recycle Right: The Recycle Right Communications Consortium provides outreach and messaging resources for local jurisdictions to help educate the public on how to Recycle Right. Recycling right means making sure recycling is empty, clean and dry; only recycling what can actually be turned into something new; and checking with your recycling collection company if you are unsure if something is recyclable or not.

Website: <https://kingcounty.gov/depts/dnrp/solid-waste/garbage-recycling/recycle-right.aspx>

Contact: Matt Manguso (206-477-7914 or matt.manguso@kingcounty.gov)

Customer Service: Information/education provided to customers/public on SWD services via web pages and phone support.

Website: <https://your.kingcounty.gov/solidwaste/index.asp>

Contact: Solid Waste Division Customer Service (206-477-4466 | TTY Relay: 711)

Solid Waste cont'd.

Transfer Stations

The Enumclaw Recycling and Transfer Station: is a facility where residents and businesses bring their garbage for disposal and their recyclable materials for recycling. Detailed information about the materials accepted for recycling and disposal can be found on the website.

Website: <https://kingcounty.gov/depts/dnrp/solid-waste/facilities/transfer/enumclaw-transfer.aspx>

Contact: Solid Waste Division Customer Service (206-477-4466 | TTY Relay: 711)

South County Recycling and Transfer Station: Since 2012, the Solid Waste Division has been working to site, design, and construct a new South County Recycling and Transfer Station to replace the aging and outdated Algona Transfer Station. The new station will be at 35101 West Valley Highway South, just north of the existing Algona Transfer Station. The project is currently in the design phase, and has held in-person and online open houses to receive public comments so the new facility reflects the needs of the surrounding community. A Design Advisory Group has also been formed to receive further public input. This new facility will provide cleaner, safer, and more efficient operations; expand customer options with easy-to-use recycling, yard waste, and garbage services; add a hazardous waste disposal service similar to the one at King County's Factoria station in Bellevue; and decrease wait times and traffic congestion. Final design is expected by 2021 and construction is planned from 2012-2023. The new station is expected to open in late 2023.

Contact: Doug Chin (206-477-5217 or Doug.Chin@kingcounty.gov)

Household hazardous waste collection: Offers free collection of hazardous waste from households and qualifying businesses at two fixed collection sites and the travelling Wastemobile.

- Factoria Household Hazardous Waste Drop Off Service
- Auburn Wastemobile at The Outlet Collection
- Covington Wastemobile Event

Website: <https://kingcounty.gov/depts/dnrp/solid-waste/facilities/hazardous-waste.aspx>

Wastemobile schedule: <https://hazwastehelp.org/HHW/wastemobile.aspx>

Household Hazards Line (206-296-4692)

Litter and Illegal Dumping: Includes several programs:

- Community Litter Cleanup - Coordinate cleanup of illegal dumpsites and litter on public property

Contact: Morgan John (206-477-4624 or morgan.john@kingcounty.gov)

- Illegal Dumping Hotline – maintains hotline for citizens to report illegal dumping, directs those complaints to the appropriate agency for follow up.

Hotline: 206-296-SITE (7483)

- Junk Vehicle – provides information and facilitates process for removing abandoned vehicles from private property.

Contact: Mary Impson (206-477-0297 or mary.impson@kingcounty.gov)

- Community Cleanup Assistance Program – financial assistance (waived tip fees) to private property owners who are either low income or whose property has been dumped on.

Contact: Terri Barker (206-477-5214 or terri.barker@kingcounty.gov;

Website: <https://kingcounty.gov/depts/dnrp/solid-waste/programs/litter-dumping.aspx>

<https://kingcounty.gov/depts/dnrp/solid-waste/programs/litter-dumping.aspx>

Landfill Operations and Neighbor Outreach

- Cedar Hills Regional Landfill Community Meetings - provides an on-going forum for landfill area residents to learn about current and planned activities at King County's landfill and at Bio Energy Washington's landfill gas-to-energy facility. Meetings occur twice a year.

Website: <https://kingcounty.gov/depts/dnrp/solid-waste/facilities/landfills/cedar-hills-meetings.aspx>

Contact: Polly Young (206-477-5266 or polly.young@kingcounty.gov)

- Closed and Custodial Landfill Maintenance and Monitoring - maintain and monitor groundwater, surface water, wastewater, and landfill gas at closed landfills, including Cedar Falls and Hobart landfills

Website: <https://kingcounty.gov/depts/dnrp/solid-waste/facilities/landfills/closed-landfills.aspx>

Contact: Anne Holmes (206-477-5223 or anne.holmes@kingcounty.gov)

WATER & LAND RESOURCES DIVISION

Chinook Wind Mitigation Project: This project will provide about 5 acres of aquatic, intertidal wetland, and riparian habitat adjacent to the Duwamish River at River Mile 6.7 in Tukwila. This project is funded through King County's In-Lieu Fee Mitigation Reserves Program (MRP). The project is designed to provide critically needed rearing habitat for juvenile Chinook salmon and other fish that use the Duwamish River. Project design should be finished in early 2020 and project construction will occur in the summer/fall of 2020.

Contact: Laird O'Rollins (206-477-4790 or laird.orollins@kingcounty.gov)

Lones Levee Setback Project: This project will remove Lones Levee and install a setback levee to restore floodplain processes and habitat in the Middle Green River while also increasing flood and erosion hazard protection to adjacent private property. Project design, permitting and outreach will be completed in 2019, with construction in 2020 or 2021.

Contact: Dan Eastman (206-477-4684 or dan.eastman@kingcounty.gov)

Middle Boise Creek Restoration Projects #3 and #4: The goal of these projects is to restore fish and wildlife habitat and address water quality concerns in Boise Creek by widening the channel, adding habitat complexity, and planting riparian buffers. Both projects are currently in the acquisition and landowner negotiation phase.

Contact: Josh Kahan (206-477-4721 or josh.kahan@kingcounty.gov)

Horseshoe Lake Flood Reduction: Project in conjunction with the Black Diamond Village Partners development to pump flood water from Horseshoe Lake, through an easement within the City of Black Diamond and discharge to a receiving facility in King County. Completion of SEPA is projected to be in late 2019 and approval of local permits is projected to be in 2020.

Contact: Wes Kameda (206-477-4722 or wesley.kameda@kingcounty.gov)

King County Noxious Weed Control Program Study on Wild Chervil: King County Noxious Weed Control Program is leading a research study on the effect of the herbicide Perspective for the treatment of the noxious weed wild chervil (*Anthriscus sylvestris*). The location for the study is Muckleshoot lands and land owned by Puget Sound Energy (PSE). The site is elk wintering habitat which is threatened in part by the large amount of wild chervil there. The Noxious Weed Program is working with the staff from the Muckleshoot Wildlife Department and Cultural Resources Program, to determine the lowest effective rate by testing different rate and season treatments to help direct management actions for control of this noxious weed. This is a two year treatment study. The data will be analyzed in late 2019.

Contact: Ashlie Arthur (206-476-4662 or asarthur@kingcounty.gov)

Enumclaw Plateau milk thistle eradication: King County is working to eradicate the Class A noxious weed milk thistle that has infested over 50 farms and other properties in the Enumclaw area. With permission from landowners, county staff survey for and control this Class A weed each year, working towards prevention of seeding and eventual elimination of the existing seed bank. On-going, seasonal.

Contact: Ashlie Arthur (206-476-4662 or asarthur@kingcounty.gov)

Green River System-Wide Improvement Framework (SWIF): The King County Flood Control District developed a Green River SWIF to address levee deficiencies to maintain eligibility for the federal levee rehabilitation program. The final SWIF includes the following chapters: introduction, deficiency action plan, capital projects, system-wide programmatic, interim risk reduction measures, and funding and implementation. The District approved the final SWIF and transmitted it to the U.S. Army Corps of Engineers (USACE) in March 2019. The final SWIF is under review by the USACE. For more information, visit the website: <http://www.kingcounty.gov/environment/wlr/sections-programs/river-floodplain-section/capital-projects/green-river-system-wide-improvement-framework.aspx>

Contact: Steve Bleifuhs (206-477-4726 or steve.bleifuhs@kingcounty.gov)

Contact: Lorin Reinelt (206-477-4808 or lorin.reinelt@kingcounty.gov)

COMPLETED PROJECTS

Porter Levee Restoration Project: This project removed a portion of the Porter levee and constructed setback protection, a side channel, and habitat log jams in order to restore floodplain habitat on the Green River. This project was also expanded to include road elevation to reduce flooding. Construction began in the summer of 2017 and was completed in 2018. Total project timeframe: 2012 – 2018

Contact: Fauna Nopp (206-477-4787 or fauna.nopp@kingcounty.gov)

Water & Land cont'd.

Middle Boise Creek Van Wieringen Restoration Project: This stream restoration project restored fish and wildlife habitat by expanding the stream channel capacity, placing large wood and gravel in the channel for habitat complexity, and planting native vegetation for shade and cover. The project extends for approximately 800 linear feet along Boise Creek. Construction was completed in summer 2018, with planting and fencing completed in early 2019.

Contact: Sarah McCarthy (206-477-4766 or sarah.mccarthy@kingcounty.gov)

Contact: Josh Kahan (206-477-4721 or josh.kahan@kingcounty.gov)

Middle Boise Creek Evans Adaptive Management Project: This small project enhanced ecological performance of a previously constructed habitat restoration project by adding nearly 60 pieces of large woody debris to the restoration site. After 3 years of monitoring, we determined that this action would enhance habitat without compromising other goals of the project. This action was supported by WDFW and tribes. The project was constructed in summer 2018.

Contact: Josh Latterell (206-477-4748 or josh.latterell@kingcounty.gov)

Turley-Lones Reach Feasibility Study: The goal of the feasibility study is to evaluate potential restoration opportunities in the middle Green River in the Turley-Lones reach, which is located at approximately river mile 37. The results of the feasibility are being used to initiate design of a restoration project in this reach. The feasibility study concluded in 2018 as the design of the resulting levee setback project begins - see Lones Levee Setback Project.

Contact: Dan Eastman (206-477-4684 or dan.eastman@kingcounty.gov)

Burns Creek and Bell Creek Feasibility Study: This project will investigate, identify and evaluate alternatives to the problem of loose gravel and sediment forming an alluvial fan where Bell Creek empties into Burns Creek. This condition causes the creeks to flow over SE Green Valley Rd, flooding surround homes, septic fields, and pastures. The report assessing sediment loads coming down the Bell Creek ravine and identifying what can be done for how much cost to alleviate the flooding was completed in 2018.

Contact: Rachel Berryessa (206-477-4644 or rachel.berryessa@kingcounty.gov)

Boise Creek Feasibility Study: This project will evaluate and cost out alternative solutions to the flooding of private properties and a County road. The study will produce a report documenting the problem and what can be done for how much cost to alleviate the flooding. Final study report by December 31, 2018.

Contact: Rachel Berryessa (206-477-4644 or rachel.berryessa@kingcounty.gov)

ON-GOING PROJECTS

Land Conservation Initiative: The King County Land Conservation Initiative is a bold effort to “finish the job” on land conservation in King County. Across the county, King County and city partners have identified 62,000 acres of the highest priority conservation lands in five separate categories: (1) urban parks/green space, (2) regional trails, (3) river & natural lands, (4) farmlands, and (5) forest lands. The initiative is a regional effort to permanently protect conservation land to provide benefits to today’s residents and generations to come. The effort is county-wide – from the edge of Puget Sound east through urban areas and rural communities to the farm fields and river valleys at the foot of the Cascade Mountains. In the Snoqualmie Watershed, the county and city partners have identified more than 25,000 acres of high-conservation-value land.

Website: <http://kingcounty.gov/services/environment/water-and-land/land-conservation.aspx>.

Contact: Michael Murphy (206-477-4781 or michael.murphy@kingcounty.gov)

Fish Passage Restoration Program: Removing barriers to fish passage is one of the most effective ways to quickly restore salmon habitat and help increase salmon abundance. King County is developing a sustainable program for comprehensive restoration of fish passage at existing barriers that are owned or operated and maintained by King County. The effort is county-wide. The goal of this program is to connect salmon with quality upstream habitat. Starting in 2019, King County field crews are surveying county stream crossings to determine if they prevent salmon from swimming upstream. The survey will help us identify projects that will allow the most salmon to reach the best habitat as quickly as possible.

Website: <http://kingcounty.gov/fishpassage>

Contact: Evan Lewis (206-477-9738 or evlewis@kingcounty.gov)

Salmon Recovery: Local governments, tribes, community organizations, concerned citizens, businesses, and state and federal agencies are working together to protect and restore salmon habitat and watershed health. In 2005, local partners reached a major milestone when they completed watershed-based

Water & Land cont'd.

habitat recovery plans for the major watersheds in King County. These plans guide salmon recovery actions and federal, state, and local investments. These efforts restore fish and wildlife habitat, promote human health, support environmental stewardship, and ensure future generations will share the legacy of salmon returning to local streams and rivers each fall.

<https://govlink.org/watersheds/default.aspx>

Contact: Janne Kaje (206-477-4078 or janne.kaje@kingcounty.gov)

Green Shorelines: Information and guidance to help lakeshore homeowners understand and implement Green Shoreline practices and green dock designs to benefit salmon and water quality.

<https://govlink.org/watersheds/8/action/GreenShorelines>

Contact: Laura West (206-477-7574 or lwest@kingcounty.gov)

Salmon SEEs: Spot spawning salmon in the Lake Washington/Cedar/Sammamish, Green-Duwamish, and Snoqualmie watersheds each fall. Some sites and times have volunteer naturalists on hand; others are self-guided. Check the website for details. August-December 2019, depending on the site.

<https://govlink.org/watersheds/8/action/salmon-seeson>

Contact: Laura West (206-477-7574 or lwest@kingcounty.gov)

Drainage and Water Quality

Complaint Investigations: Respond to citizen concerns about stormwater runoff and surface water quality problems on both residential and commercial property in the unincorporated areas of King County.

<https://kingcounty.gov/environment/waterandland/stormwater/problem-investigation-line.aspx>

Drainage Complaint Line (206-477-4811)

Minimize Stormwater Pollution: Stormwater runoff comes from small, individual sources in all parts of the watershed. Stormwater pollution is a problem that residents can change by stopping small, individual activities that cause pollution and result in large-scale pollution.

<https://kingcounty.gov/environment/waterandland/stormwater/introduction/stormwater-runoff.aspx>

Neighborhood Drainage Assistance Program: Addresses private flooding, erosion, and sedimentation problems. The program can design and fund capital improvement projects, repair existing drainage systems, and provide technical assistance for questions about construction, maintenance, permits, and storm drainage.

<https://kingcounty.gov/environment/waterandland/stormwater/neighborhood-drainage-ssistance.aspx>

Contact: Brian Sleight (206-477-4826 or brian.sleight@kingcounty.gov)

Agricultural Drainage Assistance Program: Provides both technical and financial assistance to help agricultural property owners improve drainage of their fields.

<https://kingcounty.gov/environment/waterandland/stormwater/neighborhood-drainage-ssistance.aspx>

Contact: Brian Sleight (206-477-4826 or brian.sleight@kingcounty.gov)

Livestock Program: Supports the raising and keeping of livestock to minimize adverse impacts on the environment, particularly on water quality and salmon habitat. This includes help developing a workable solution for handling livestock waste.

<https://kingcounty.gov/environment/wlr/sections-programs/rural-regional-services-section/agriculture-program/livestock-programs.aspx>

Contact: Rick Reinlasoder (206-477-4810 or rick.reinlasoder@kingcounty.gov)

Farmland Preservation Program: King County purchases development rights from agricultural landowners to permanently protect the land for future farming. It is a voluntary program.

<https://kingcounty.gov/environment/wlr/sections-programs/rural-regional-services-section/agriculture-program/farmland-preservation-program.aspx>

Contact: Ted Sullivan (206-477-4834 or ted.sullivan@kingcounty.gov)

Forestry Program: King County offers education, technical assistance, and economic incentives aimed at retaining forest land for its environmental, social, and economic benefits.

<https://kingcounty.gov/environment/wlr/sections-programs/rural-regional-services-section/forestry-program.aspx>

Contact: Bill Loeber (206-477-4755 or bill.loeber@kingcounty.gov)

Wendy Sammarco (206-263-6916 or wsammarco@kingcounty.gov)

Current Use Taxation: The Public Benefit Rating System program provides a tax incentive to encourage landowners to voluntarily conserve and protect land resources, open space, and forest. In return for preserving and managing resources, the land is assessed at a value consistent with its

Water & Land cont'd.

“current use” rather than the “highest and best use.” The reduction in assessed land value is between 50% and 90% for the portion of the land participating in the program.

<https://kingcounty.gov/incentives>

Contact: Bill Bernstein (206-477-4643 or bill.bernstein@kingcounty.gov)

Contact: Megan Kim (206-477-4788 or megan.kim@kingcounty.gov)

Transfer of Development Rights: This program is a voluntary, incentive-based, and market-driven approach to preserve land and steer development growth away from rural and resource lands into King County’s Urban Area. Rural landowners realize economic return through the sale of development rights to private developers, who are able to build more compactly in designated unincorporated urban areas and partner cities.

<https://kingcounty.gov/environment/stewardship/sustainable-building/transfer-development-ights.aspx>

Hazardous Waste Management: Small businesses can get advice, cash incentives, safety materials, training, and access to free disposal to decrease and safely dispose of hazardous waste materials. Information is available in multiple languages.

<https://lhwmp.org/home/BHW/sqg.aspx> | Business Waste Line 206-263-8899

Hazardous Waste Management: Small businesses can become EnviroStars and be recognized for their environmentally friendly practices and commitment. Free business promotion, mentoring and technical assistance.

<https://lhwmp.org/home/EnviroStars/index.aspx> | EnviroStars 206.263.1663

Hazardous Waste Management: Residents can get chemical-free gardening advice from Grow Smart Grow Safe, indoor pesticide recommendations, and free disposal services (including home pickup for qualifying residents) to decrease and safely dispose of hazardous waste materials.

<https://your.kingcounty.gov/solidwaste/facilities/hazwaste.aspx>; <http://your.kingcounty.gov/solidwaste/naturalyrdcare/index.asp> | Household Hazards Line 206-296-4692

Restoration Project Monitoring and Maintenance: The Ecological Restoration and Engineering Services, Monitoring and Maintenance Program aims to find ways to make projects more cost-effective and reliable through the use of comparative studies and experiments. The program tracks project outcomes and performs maintenance and modifications as needed to ensure projects meet their goals.

Contact: Laura Hartema (206-477-4708 or laura.hartema@kingcounty.gov)

Small Habitat Restoration Program: Builds low-cost projects in rural and urban King County that enhance and restore streams and wetlands. Projects occur on both public and private land and are selected based on the benefit they will provide to the environment and the cost-efficiency.

Contact: Mason Bowles (206-477-4651 or mason.bowles@kingcounty.gov)

The King County Lake Stewardship Program: Works with trained volunteers to study and monitor the health of many of King County’s small lakes. Volunteer resident scientists are provided with sampling equipment, technical assistance, and education regarding a variety of lake-related topics and concerns.

Contact: Chris Knutson (206-477-4739 or chris.knutson@kingcounty.gov)

Noxious Weed Control Program: Provides education and technical assistance to landowners and public agencies to help them find the best control options for noxious weeds on each site and to reduce the overall impact of noxious weeds throughout the county.

<https://kingcounty.gov/weeds>

Contact: Steven Burke (206-477-9333 or Steven-J.Burke@kingcounty.gov)

Lake Weed Watcher Program: Volunteers are trained to survey for aquatic weeds in small lakes. The goal is to watch for invasive weeds that are not currently known to occur in King County or that have a very limited distribution, but have the potential to spread and cause damage. Seasonal

<https://kingcounty.gov/services/environment/animals-and-plants/noxious-weeds/weed-watchers/lake-weed-watchers.aspx>

Contact: Ben Peterson (206-477-4724 or ben.peterson@kingcounty.gov)

Knotweed Control on Rivers: Control knotweed and other invasive plants along the Cedar River, Snoqualmie River, Green River, and Soos Creek and tributaries. Ongoing, seasonal.

<https://kingcounty.gov/environment/animalsAndPlants/noxious-weeds/knotweed-control-projects.aspx>

Contact: Steven Burke (206-477-4639 or Steven-J.Burke@kingcounty.gov)

PUBLIC HEALTH, SEATTLE & KING COUNTY

Community Health Services

Health insurance access and outreach: Coordinate with partners on communication, outreach, and enrollment to inform residents of improved access to government-provided or subsidized health insurance as a result of federal healthcare reform.

Website: <https://kingcounty.gov/depts/health/locations/health-insurance.aspx>

Contact: Daphne Pie (206-263-8369 or daphne.pie@kingcounty.gov)

ONGOING

Prevention

Communicable diseases, Public Health laboratory, Medical Examiner Office, and vital statistics:

Conduct surveillance and investigation for all communicable diseases. Includes program and/or clinical services in HIV/AIDs, sexually transmitted diseases, tuberculosis, child vaccine distribution, immunization promotion, and public health laboratory services. Provides birth and death certificates and review of causes of death in King County.

Website: <https://kingcounty.gov/depts/health/communicable-diseases.aspx>

Contact: Donna Allis (206-291-4517 or donna.allis@kingcounty.gov)

Chronic Disease & Injury Prevention

Chronic disease & injury prevention, women's health, tobacco: Chronic disease services including, tobacco and obesity prevention, screening services for breast, cervical, and colon cancer, diabetes, and asthma services through community health workers, and violence and injury prevention services.

Website: <https://kingcounty.gov/depts/health/chronic-diseases.aspx>

Contact: Mariel Torres Mehdipour (206-477-8620 or mariel.torresmehdipour@kingcounty.gov)

Jail Health Services

Inmate services: Provide necessary medical, psychiatric, and dental services to detained persons in correctional facilities in the King County correctional facilities in Kent and Seattle so inmates receive constitutionally guaranteed health services that meet community and professional standards of care.

Contact: Danotra McBride (206-263-4164 or donatra.mcbride@kingcounty.gov)

Community Health Services

Healthcare services: Provide center-based and regional services which may include the Women, Infants, and Children assistance program, Family planning, primary care, maternity support services, oral health, refugee health, pharmacy, home nursing, healthcare access assistance, healthcare for the homeless, school-based health, and childcare health and other services.

Website: <https://kingcounty.gov/depts/health/locations.aspx>

Contact: Jerry DeGriek (206-263-1330 or jerry.degriek@kingcounty.gov)

Preparedness Section

Preparedness: Support preparedness efforts of healthcare organizations, local governments, businesses, community organizations, and the public to respond to and recover quickly from all hazards including weather incidents, earthquakes, disease outbreaks, and acts of terrorism.

Website: <https://kingcounty.gov/depts/health/emergency-preparedness.aspx>

Contact: Carina Elsenboss (206-263-8722 or carina.elsenboss@kingcounty.gov)

Environmental Health

Environmental public health services: Permitting and inspection services for businesses and individuals, including food business, food worker, solid waste, plumbing and gas piping, drinking water, and septic systems. Promote health and well-being of all county residents with equity and social justice work, healthy community planning, climate change, local hazardous waste, lead and toxics, veterinary services and zoonotic disease programs.

Website: <https://kingcounty.gov/depts/health/environmental-health.aspx>

Contact: Dylan Orr (206-477-3832 or dylan.orr@kingcounty.gov)

Emergency Medical Services

Assure high-quality emergency medical services: Coordination of pre-hospital emergency services and provision of regional leadership through partnerships with cities and fire departments to assure uniformity of medical care and dispatch across jurisdictions, consistency and excellence in training, and medical quality. Focus areas include Medical Direction, EMS Training, Community

Public Health cont'd.

Programs, Strategic Planning and Data Management, and Administration including Regional Leadership and Financial Management.

Website: <https://kingcounty.gov/depts/health/emergency-medical-services.aspx>

Contact: Michele Plorde (206-263-8579 or michele.plorde@kingcounty.gov)

SHERIFF'S OFFICE

The King County Sheriff's Office consists of over 1,100 commissioned and professional staff employees who provide services to unincorporated King County and our contract partners. These services include 9-1-1 dispatch, community patrol and emergency response, criminal investigations, traffic safety, transit police, search & rescue, sheriff's civil function, concealed weapons licensing, fingerprinting, records, etc.

The Sheriff is the chief executive officer and conservator of the peace of the county. The mission of the King County Sheriff's Office is to be a trusted partner in fighting crime and improving the quality of life for our residents and guests. We strive to achieve our mission by our work on the following goals: a) Develop and sustain public trust, value and support. b) Reduce crime and improve the community's sense of security. c) Improve traffic safety by reducing impaired and unsafe driving behaviors and traffic collisions. d) Recruit, hire, train and promote the best people, reflective of the community we serve, to provide high quality, professional and responsive service. e) Provide facilities, equipment and technology that support achievement of our mission. f) Prepare to respond to and resolve critical incidents and disasters.

Most of the services you receive are deployed out of one of the Sheriff's Office Precincts. Precinct supervisors work closely with their deputies and detectives to identify crime trends, hot-spot locations and the repeat offenders that are most damaging to your community. They then develop investigative plans to investigate and prosecute those offenders in a coordinated manner with other agencies and the prosecuting attorney's office. Similarly, areas with high numbers of traffic collisions are focused on, along with impaired and unsafe driving behaviors, to reduce the harm that results from collisions. Deputies are assigned to fairly consistent areas. This allows them to become familiar with residents, businesses, schools, and the overall community in their assigned patrol areas. They are expected to build relationships and learn the particular problems in an area or neighborhood, to include their focus on crime trends, traffic safety and quality of life issues. Bottomline, we want people to be and feel safe while at home, work, school and while traveling!

Our Precincts are referred to as Precincts #2, #3, & #4...or North, Southeast, and Southwest, respectively. Precinct #2 is in Sammamish City Hall, Precinct #3 is in the Hicks Raburn Precinct located in Maple Valley, and Precinct #4 is in downtown Burien.

On behalf of the men and women of the King County Sheriff's Office, thank you for the honor of serving you.

Mitzi Johanknecht, King County Sheriff

Command Structure

Pct. #2 – North Precinct Robin Fenton 206-263-9133

Pct. #3 – Southeast Precinct Major Troy Olmsted 206-477-6446

Pct. #4 – Southwest Precinct Major Bryan Howard 206-477-2200

Other:

Internal Investigations 206-263-2525

Communications Center 911 (Emergency)

206-296-3311 (Non-emergency)

King County Office of Emergency Management 206-296-3830

King County Road Services Hotline 206-477-8100