



King County
Local Services

How can we serve you?



King County Local Services

Community Service Area Town Hall Meeting

Bear Creek/Sammamish

Thursday, Oct. 1, 2020

Welcome

John Taylor, Director

King County Local Services



King County
Local Services

Schedule

1. Welcome..... Local Services Director John Taylor
2. Opening remarks..... Councilmember Kathy Lambert
3. Elections..... Director Julie Wise
4. Assessor..... Assessor John Wilson
5. Sheriff's Office..... Major John C. McSwain
6. Community Partner Updates
7. County COVID-19 Update..... Assistant Division Director Julie Horowitz
8. Fiscal State of the County..... Budget Manager Becka Johnson Poppe
9. Local Services Updates..... Director John Taylor
10. King County Briefings..... Department Staff
11. Q&A / open house
12. Closing Remarks..... Councilmember Kathy Lambert
13. Thanks and next steps..... Director John Taylor



Zoom meetings – housekeeping

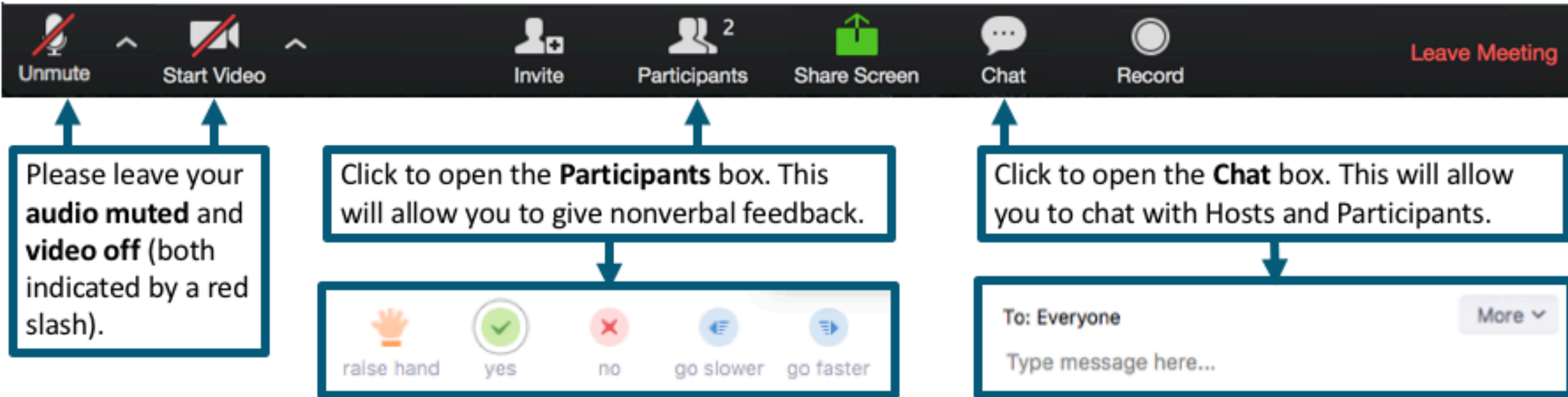
- Everyone starts with permission to use video and audio.
- Chat with everyone or a specific individual.
- We can hear you. *Mute your microphone please.*
- We can see you. *Turn off your video if you don't want to be seen.*
- Facilitator/Host can control all functions.
- Be succinct and clear. Use an appropriate volume.

Technology can be challenging and we are all trying our best.
Listen to Aretha: R-E-S-P-E-C-T

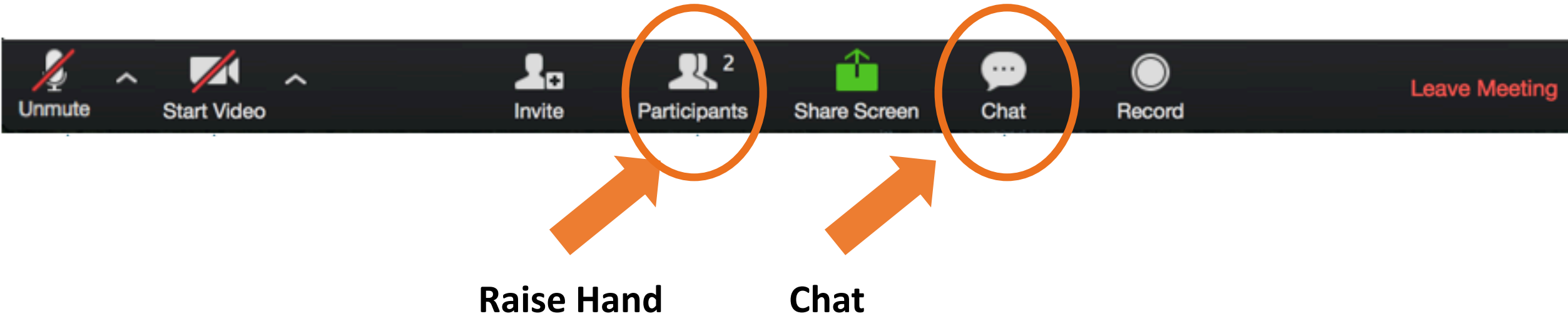


King County
Local Services

Zoom meetings – functions



Questions?





Councilmember **Kathy Lambert**

District 3

Kathy.Lambert@kingcounty.gov

Facebook:

<https://www.facebook.com/lambert.kathy>



King County
Local Services

King County Elections



Julie Wise

Director

206-477-4140 or 206-296-VOTE

Julie.Wise@kingcounty.gov



Follow us @KCElections



King County
Local Services

Presidential election preview

- **October 14** – Ballots and voters' pamphlets are mailed
- **October 26** – Deadline to register or update information online or by mail for this election
- **November 3 – Election Day!** Ballots must be postmarked by today or returned to a ballot drop box
 - Voters may register or update their information in person at a Vote Center until 8 p.m.
 - Ballot drop boxes close at 8 p.m. sharp
- **November 24** – Election certification



Hot Topics



- COVID-19 service changes
- United States Postal Service
- Ballot drop boxes
- Vote Centers



What you can do

- Make sure your registration is up to date – votewa.gov
- Call us at 206-296-VOTE or go online if you don't see your ballot by October 19
- Vote early!
- Help your friends and family make a plan to vote



King County
Local Services

HNT 90 **vote!**

VOTEPLAN

I'M VOTING

- ☐ Immediately after receiving my ballot
- ☐ The first weekend after receiving my ballot
- ☐ On Election Day (*not recommended*)

I'M RETURNING MY BALLOT BY

- ☐ Mail
- ☐ Drop box

I HAVE

- ☐ Registered to vote
- ☐ Checked my registration

TAG TWO FRIENDS

@kcelections
206-296-VOTE (8683)
elections@kingcounty.gov

Questions?



King County
Local Services



John Wilson

King County Assessor

206-296-7300

assessor.info@kingcounty.gov



King County
Local Services

We are still available to serve you!

- To access virtual services, you can email the Assessor's Office at **assessor.info@kingcounty.gov**, call 206-296-7300, or visit www.kingcounty.gov/depts/assessor.
- You can apply online for property tax exemptions at taxrelief.kingcounty.gov, email **Exemptions.Assessments@kingcounty.gov**, or call 206-296-3920.
- If you have a complex issue that requires a meeting with our staff, call or email to set up an appointment.
- For property tax payment changes, please visit our Finance and Business Operations website: <https://kingcounty.gov/depts/finance-business-operations/treasury/property-tax.aspx>



Residential home values have not been significantly impacted by COVID-19 to date.

(Commercial properties are a different story)

- Overall, home values and sale prices have been relatively flat compared to last year.
- As always, values vary from city to city and neighborhood to neighborhood.
- One significant factor in residential home values in King County is the increase in values in Seattle suburbs, especially in the south end.
- While housing values have remained relatively steady so far, some commercial sectors have had their values severely impacted. These changes in value will be reflected in the 2021 assessed value for taxes payable in 2022.



Eligibility for the Senior Property Tax Reduction Program has been expanded, and you can apply online

- The annual household income limit is now \$58,423 including Social Security and other sources.
- Born in 1958 or earlier, or disabled and unable to work in 2019 or earlier
- Own the residence as of 12/31/2019. Occupy as a primary residence 9 months each year

Go to TaxRelief.KingCounty.Gov to apply online



Let us know if the value of your commercial property was affected by COVID-19 restrictions

- Housing values have remained steady
- Some commercial sectors have had their values significantly hammered by being temporarily closed or their operations constrained.
- Changes in value caused by COVID will be reflected in the 2021 assessed value for taxes payable in 2022.
- To help us accurately capture the effects COVID:
Commercial taxpayers can report COVID impacts at
www.kingcounty.gov/COVID-value-review



Questions?



King County
Local Services



King County Sheriff's Office North Precinct

**Major John C. McSwain
North Precinct Commander**

John.McSwain@kingcounty.gov
206-263-2088



King County
Local Services

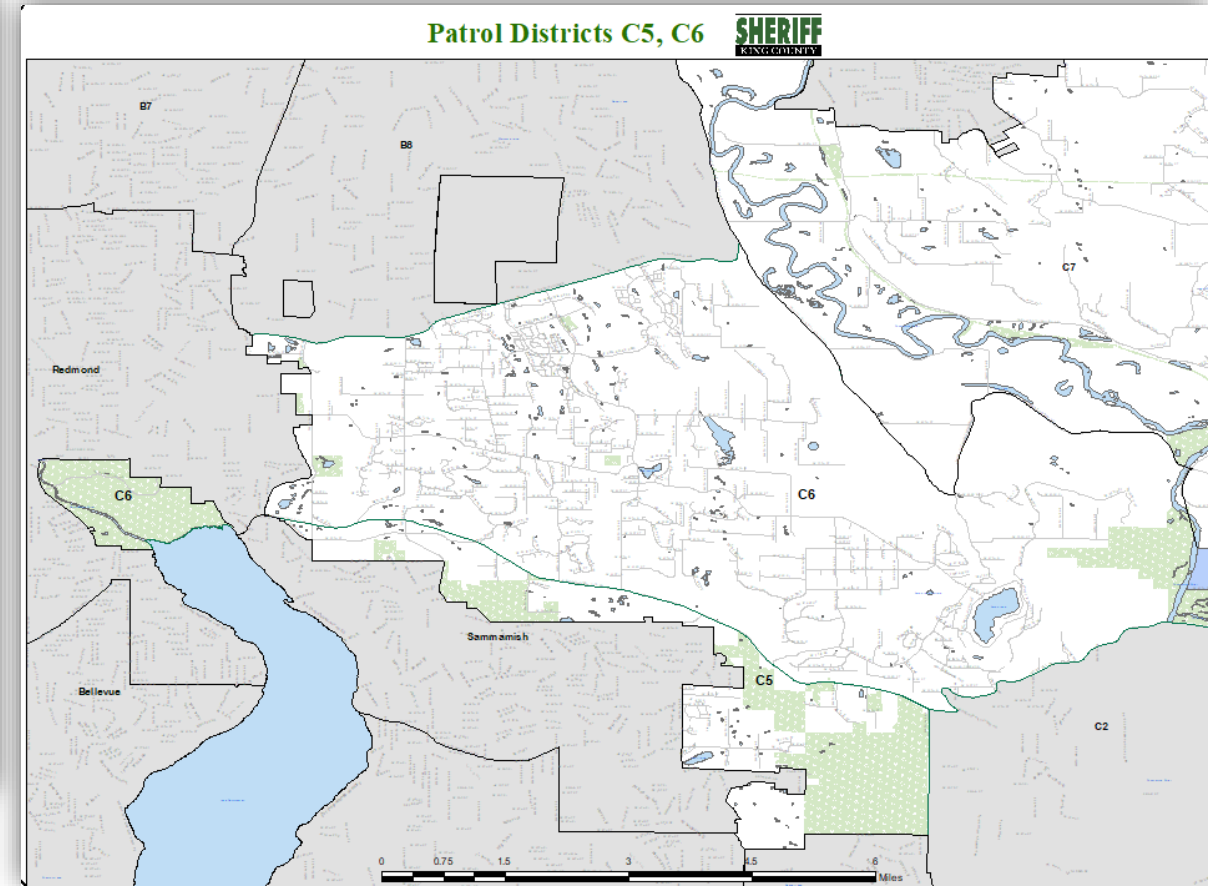
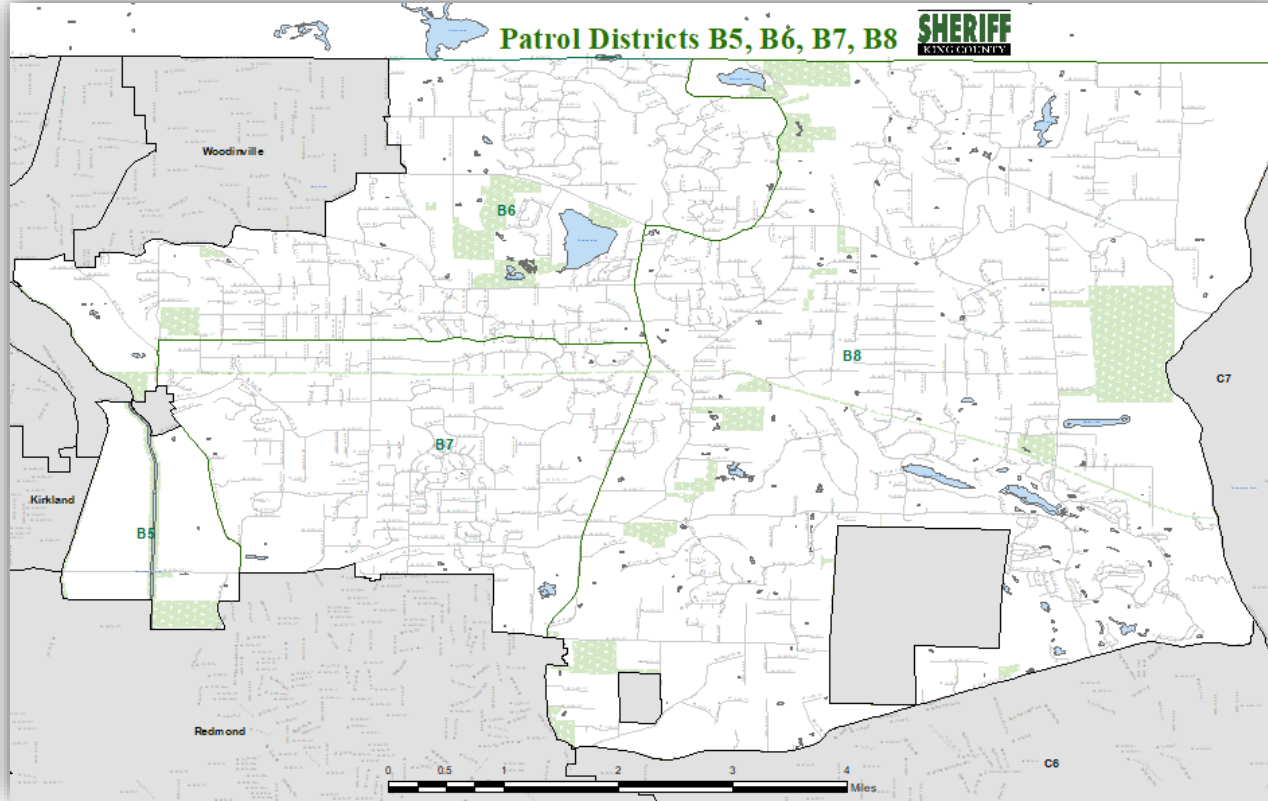
North Precinct goals

<https://www.kingcounty.gov/depts/sheriff/about-us/mission.aspx>

- Detective and patrol staff continue to work closely with Crime Analysis to develop usable statistics that direct resources to crime issues in our jurisdiction.
- Train and encourage our CID, SET, and Precinct staff to respond to requests for services within 24 hours if non-emergent.
- Continue to respond to traffic complaints, especially in high traffic areas around schools, and identified problem areas. Also conduct a monthly review of accident data with an eye to more focused enforcement.
- Precinct Command Staff continued to work monthly, with regional entities, to plan and prepare for large-scale events that could potentially involve North Precinct unincorporated areas.
- Precinct and Sheriff's Office Command Staff continue to collaborate with community members on policing priorities, partnering with outreach teams, addressing racial inequities and improving quality of life in our King County communities.



KCSO North Precinct/Bear Creek/Sammamish area



Crime stats for B Sector

B Sector NIBRS Offense Classification - Group A	2019	2020 (As of 8/31/2020)
Murder & Nonnegligent Manslaughter	0	0
Rape	2	3
Sexual Assault With An Object	1	0
Fondling	1	0
Aggravated Assault	4	2
Simple Assault	20	11
Intimidation	17	11
Violation of No Contact Orders	10	3
Burglary/Breaking & Entering	30	19
Larceny - Theft Offenses	100	65
Motor Vehicle Theft	10	2
Arson	0	1
Destruction/Damage/Vandalism of Property	23	32
Counterfeiting/Forgery	1	1
Fraud Offenses	41	363
Embezzlement	1	0
Extortion/Blackmail	1	0
Stolen Property Offenses	2	1
Drug/Narcotic Violations	3	0
Pornography/Obscene Material	2	0
Weapon Law Violations	1	2



Crime stats for C/6-7 area

C5, C6 Districts NIBRS Offense Classification - Group A	2019	2020 (As of 8/31/20)
Murder & Non-Negligent Manslaughter	0	0
Rape	3	1
Fondling	2	1
Aggravated Assault	12	3
Simple Assault	26	10
Intimidation	13	8
Violation of No Contact Orders	14	19
Robbery	1	1
Burglary/Breaking & Entering	19	14
Larceny - Theft Offenses	104	89
Motor Vehicle Theft	8	5
Arson	4	0
Destruction/Damage/Vandalism of Property	23	26
Counterfeiting/Forgery	3	0
Fraud Offenses	26	185
Extortion/Blackmail	2	0
Drug/Narcotic Violations	5	0
Pornography/Obscene Material	1	0
Weapon Law Violations	0	1



Questions?



King County
Local Services

Community partner updates





Public Health – Seattle and King County

Julie Horowitz

**Assistant Division Director
Environmental Health**

jhorowitz@kingcounty.gov



King County
Local Services

COVID-19 Information



COVID-19 Testing

Get tested as soon as you feel symptoms

King County free testing sites:

<https://kingcounty.gov/depts/health/covid-19/care/testing.aspx>

206-477-3977 (language line available)



Protecting yourself and others



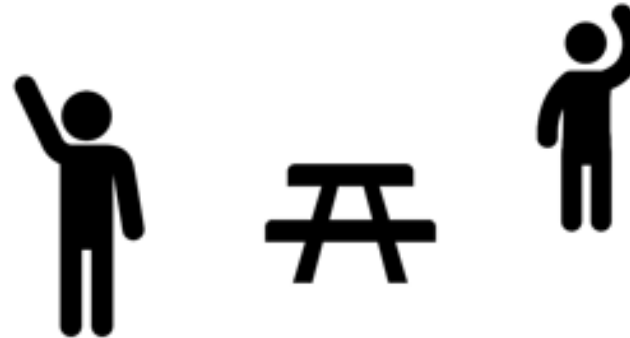
wear masks



social distancing



stay home



keep gatherings small

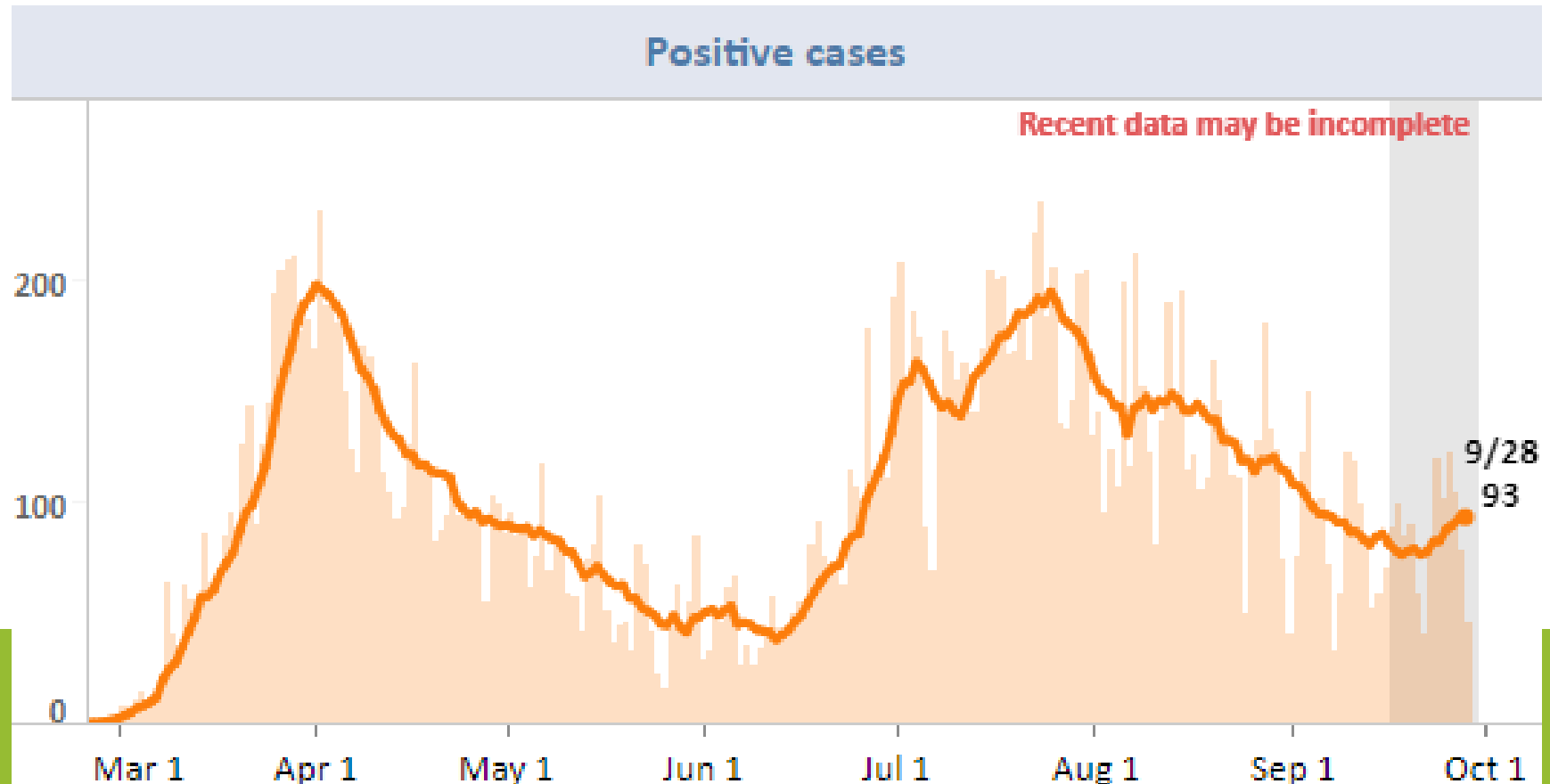


King County
Local Services

Current trends and data

King County's COVID-19 data dashboards

The daily summary dashboard can be searched by geography
<https://kingcounty.gov/depts/health/covid-19/data.aspx>



Additional resources and COVID-19 questions

Subscribe to alerts on Public Health's website: www.kingcounty.gov/covid

Medical questions related to COVID 19: Call 206-477-3977 between 8 am and 7 pm

Non-medical questions about COVID-19, including compliance and business issues: King County COVID-19 Business and Community Information Line (Mon.-Fri., 8:30 am - 4:30 pm) 206-296-1608 or submit a written inquiry or report online at <https://blue.kingcounty.gov/about/contact>

Safe Start Learn more about King County's plans and guidance for reopening.	Face Coverings Learn more about the Local Health Officer Directive	Stay Informed Read our latest updates and press releases
---	--	--



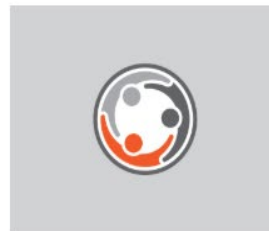
[Symptoms, testing, and care](#)



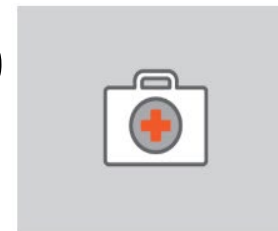
[Schools and child care](#)



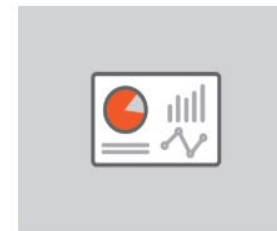
[For businesses](#)



[Community and faith-based organizations](#)



[For healthcare and service providers](#)



[COVID-19 Data Dashboards](#)

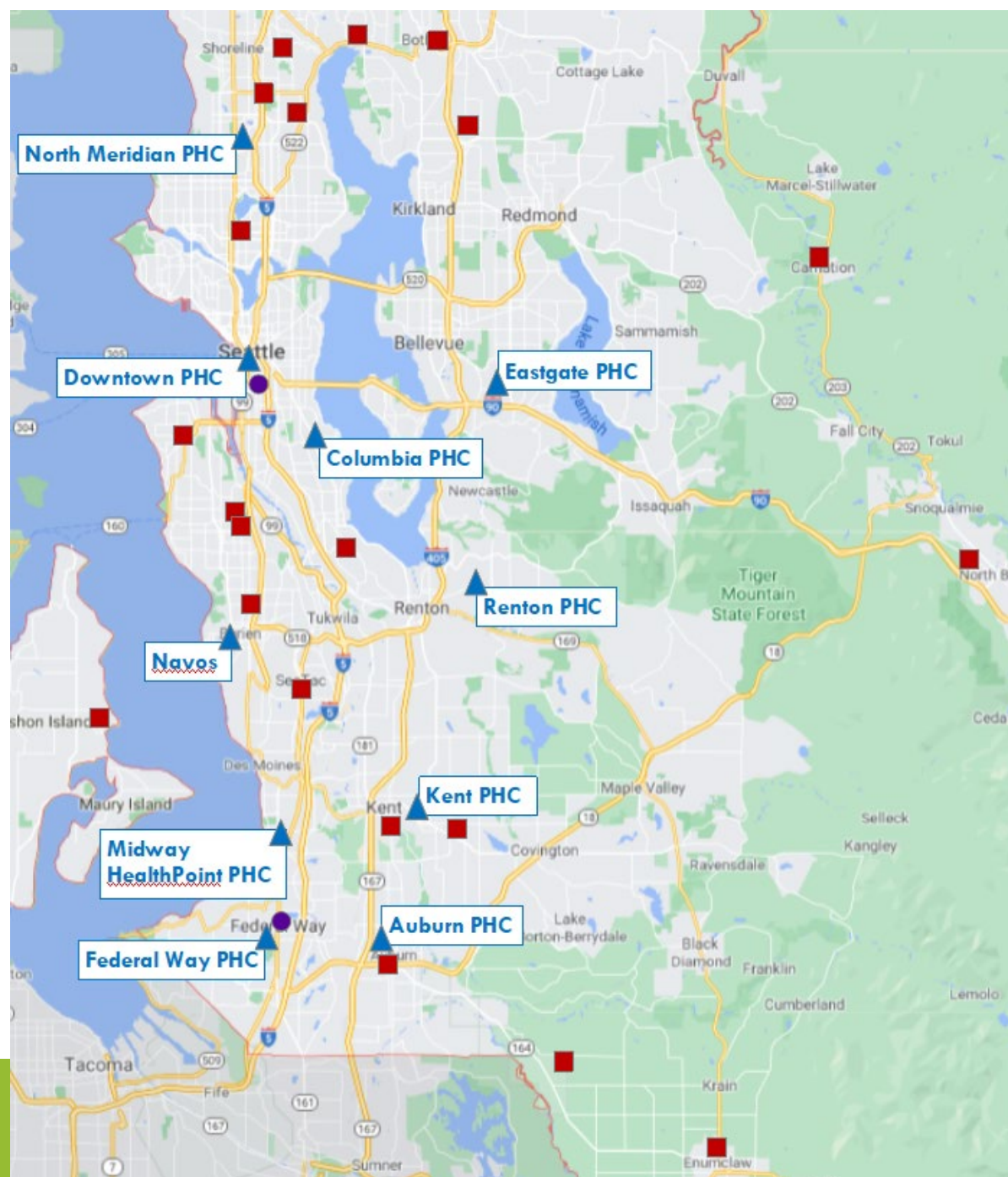


[Frequently Asked Questions](#)



[Community support and well-being](#)

- ✓ **WIC & First Steps** - all locations except Navos & Walk-In Enrollment Locations
- ✓ **Nurse Family Partnership** – county-wide
- ✓ **Dental** - Columbia, Downtown, Eastgate, North Meridian (separate Lake City location), and **Renton**
- ✓ **Family Planning** - Auburn, **Eastgate**, Federal Way, and Kent
- ✓ **Primary Care** - Downtown, **Eastgate**, and Navos
- ✓ **Walk-In Enrollment Locations** - Assistance with health insurance, basic food, Orca Lift, etc.



Public Health Centers



Part-Time WIC/First Steps Sites



Walk-In Enrollment Locations



King County
Local Services

Questions?



King County
Local Services

King County Budget 2021-2022

OFFICE OF PERFORMANCE, STRATEGY AND BUDGET



King County

Budget at a Glance



\$12.4 BILLION PROPOSED
FOR 2021-2022



15,000+ EMPLOYEES

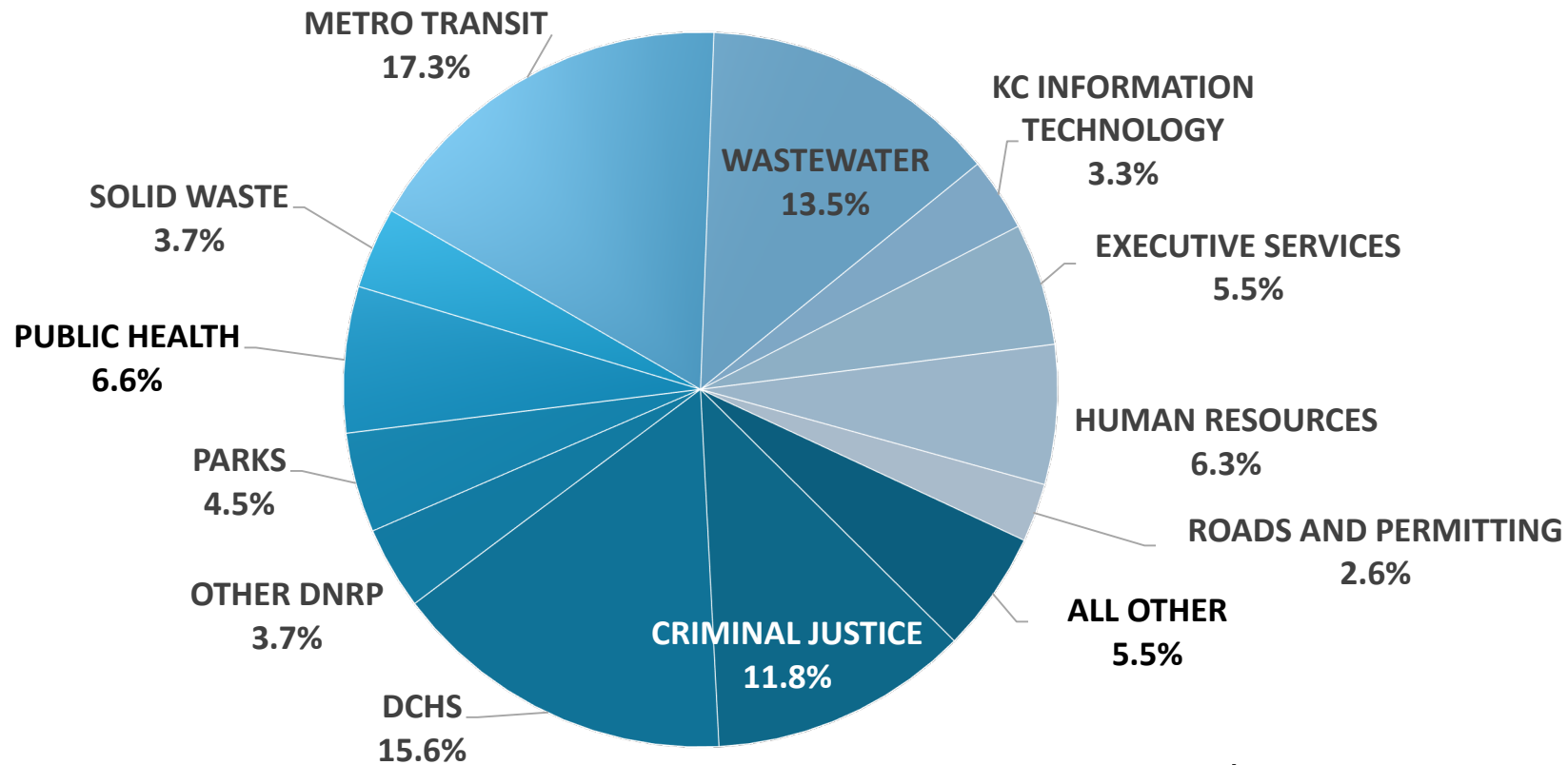


60+ PROGRAMS, BOTH
REGIONAL AND LOCAL



SERVING 2.2 MILLION
RESIDENTS (12TH LARGEST
COUNTY IN THE U.S.)

Where does our funding go?



Based on 2021-2022 Proposed Budget

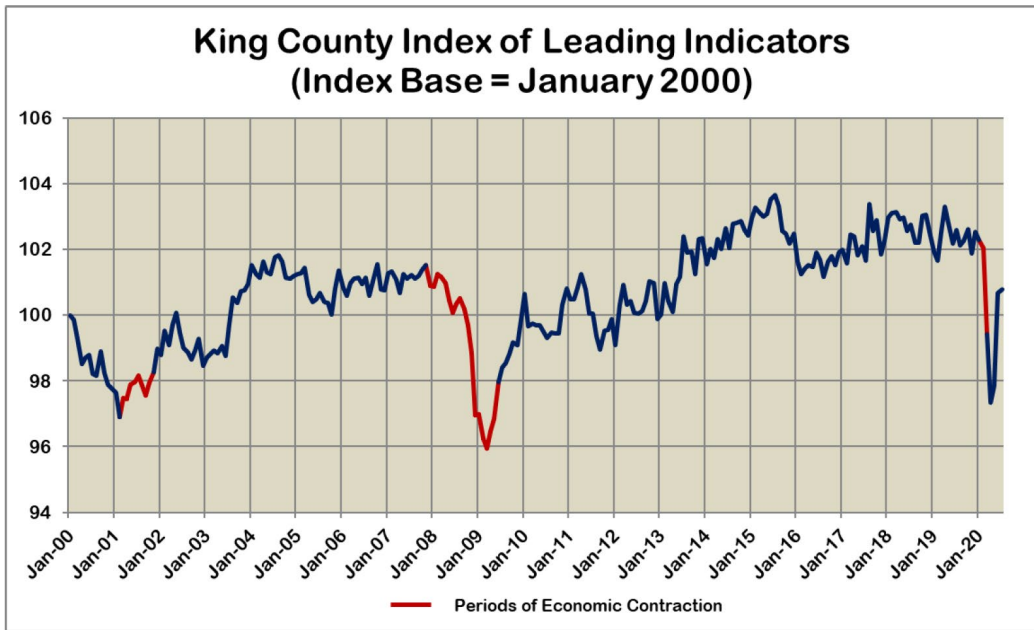
Restrictions on revenue

State law and the King County Charter impose restrictions on the uses of many revenues.

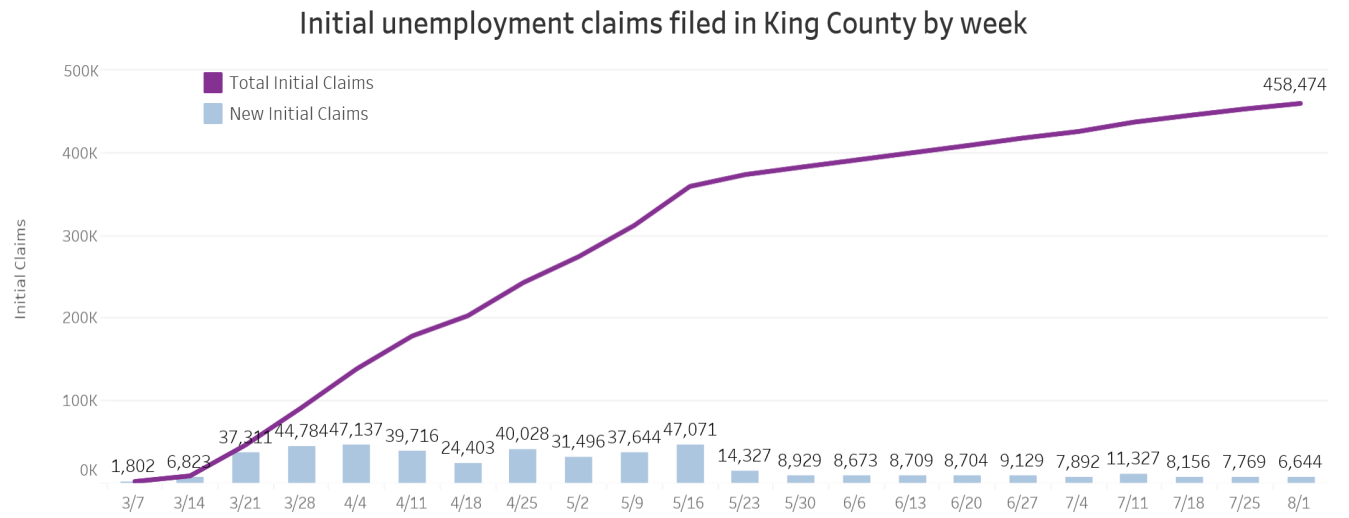
For example, revenues collected from solid waste disposal charges must be used for solid waste programs and cannot be diverted to parks or human services.

King County's finances are organized into about 140 different funds, each with its own revenue sources and expenditures.

The only truly flexible source of funds is the General Fund. General Fund revenues are severely limited by State law. The State and cities have much more revenue flexibility than counties.



Leading Economic Indicators – 2000-2020: Largest single-month change ever in March but some parts of the economy have started to bounce back



King County residents filed 458,474 new unemployment claims from March 1 – August 1;

July countywide unemployment rate was 8.3%;

July statewide unemployment rate was 10.2%

King County's Economic Outlook



August Revenue Forecast

Decline in taxable sales from the March 1 forecast:

2020: -15.8%

2021: -14.8%

2022: -12.4%

Programs that are particularly impacted are those funded by the General Fund, Transit, Mental Illness and Drug Dependency (MIDD), rental car sales tax, and the lodging tax

2021-2022 Budget

2021-2022 budget discussions will be dominated by three issues:

1. COVID-19 response (Public Health, homeless shelter deintensification, transit, etc.)
2. Revenue consequences of the recession caused by COVID-19
3. Anti-racism agenda

COVID-19 Response

- Activities in 2020 are paid for with federal and state funds:
 - Public Health testing, outreach, contact tracing, etc.
 - Homeless shelter deintensification
 - Isolation and quarantine facilities
 - Grants for food assistance, rental assistance, small business support, etc.
- Federal funding ends as of December 30, 2020; Congress is gridlocked on a new bill
- If no federal or state funds are provided, King County's COVID-19 response will be dramatically reduced in January
- Executive Constantine's Proposed Budget includes short-term funding to buy time for federal action in January

Budget Process

Agencies develop budget proposals
Updated forecast in May

April – June

Executive Proposed Budget
transmitted to King County Council

Late Sept.

King County Council adopts 2021-
2022 Budget

Nov

July – Sept.

Executive reviews agency proposals
and develops Executive Proposed
Budget
Updated forecast in August

Oct

King County Council holds public
hearings

How you can get involved

Agency Proposed

- Community and advisory groups

Council Adopted

- Call your Councilmember
- Attend a community meeting

Questions?



King County
Local Services

Local Services updates

John Taylor

Department Director



King County
Local Services

Assistance and grants

- COVID-19 small business technical assistance
- \$5000 grants to help small business that have been impacted by COVID-19 (Round 2 closed)
- 2021 \$5,000 Community Service Area Grants until Nov. 16
- Face covering and hand sanitizer distribution events every Thurs through December (Thursday, Oct. 8: 10am-12:30pm at Cottage Lake Park parking area, 18831 N.E. Woodinville-Duvall Road, Woodinville)
- Virtual meetings
- Reach out to CSA Liaison **Marissa Alegria** for support or questions



A community needs list...

- Includes service, program, and capital improvement projects
- Supports the community's 20-year vision
- Is developed with community
- Clearly states whether the county can implement a project (and when)
- **Will be used to inform budget development**

<https://www.publicinput.com/bearcreek>

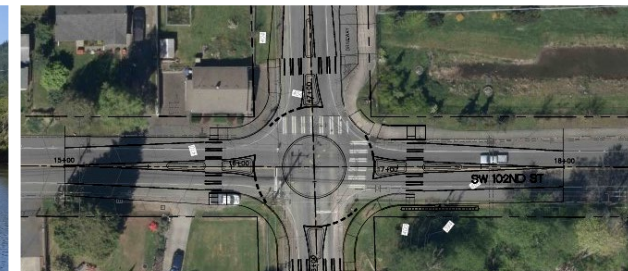


King County
Local Services

Road Services Division



Rose LeSmith
Engineering Section
Manager



King County
Local Services

Contact Us!

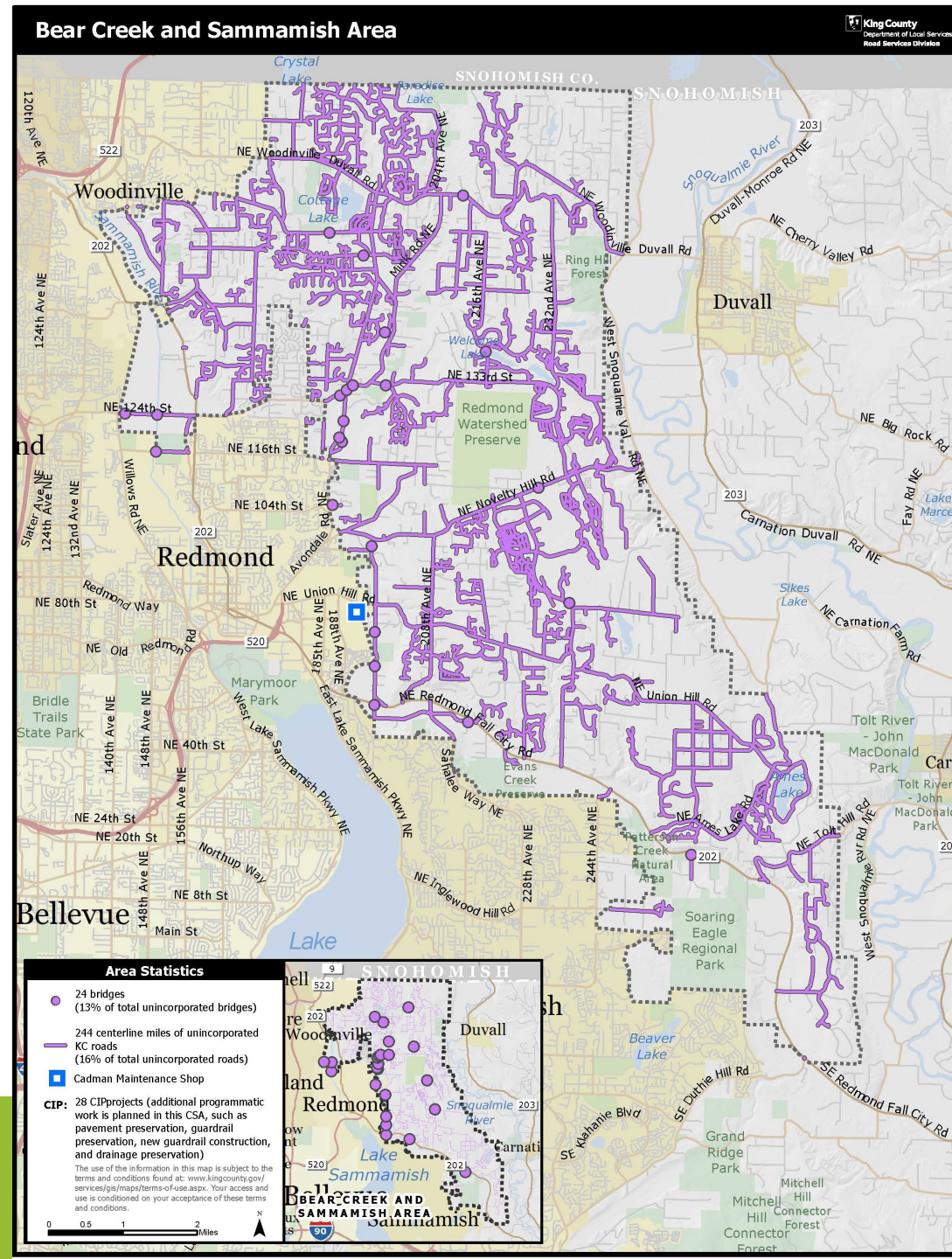
24/7 Road Helpline – 206-477-8100 | 800-527-6237 | maint.roads@kingcounty.gov |



@kcroads

Bear Creek Sammamish unincorporated area

- 24 bridges (13% of total bridges)
- 244 miles of unincorporated roads (16% of total roads)
- 1 maintenance shop
- 29 capital projects



Current capital projects

Bear Creek Sammamish

4 Roadway and roadside

1 Bridge

14 Traffic control and road safety

10 Drainage

Maintenance activities respond to critical safety issues, and customer service requests (ongoing, year-round) including:

- Pothole patching
- Vegetation management
- Traffic sign repair/replacement
- Maintaining road shoulders
- Speed calming
- Repairing guardrail
- Clearing blocked drainage assets
- Removing debris



Repaved and installed new mobility ramps at Novelty Hill Road and Redmond Ridge in July 2020.



In July, we completed emergency repair of a slide-prone area on NE Novelty Hill Road, between 243rd Ave NE and West Snoqualmie Valley Road NE. We repaired an unstable hillside that caused temporary closure of the road earlier this year.



King County
Local Services

Contact Us!

24/7 Road Helpline – 206-477-8100 | 800-527-6237 | maint.roads@kingcounty.gov |



@kcroads

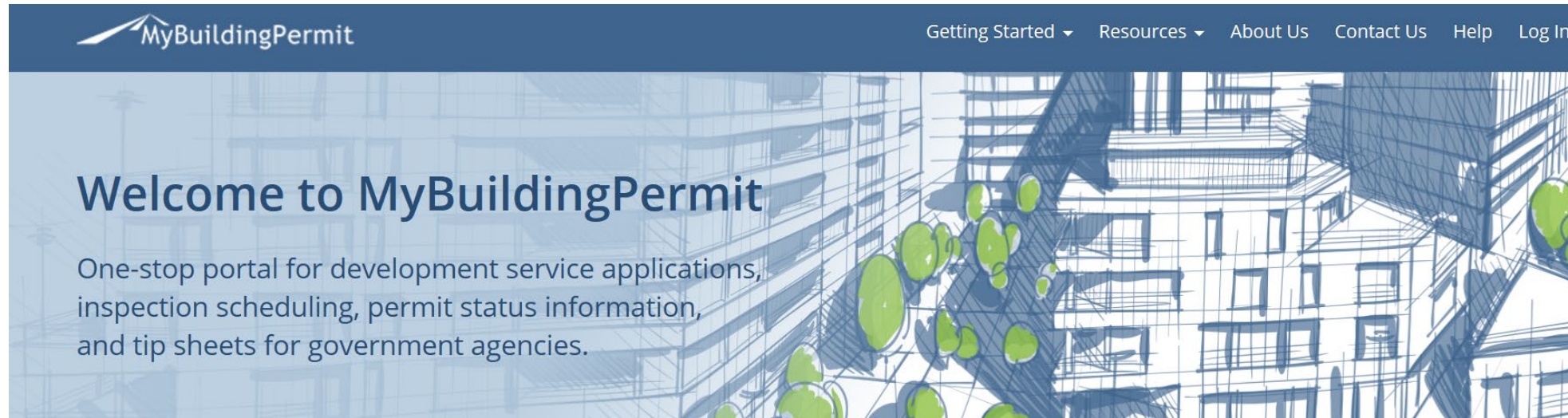
Permitting

Mark Rowe



What's New in Permitting?

- 90% of our permits are available online through on **MyBuildingPermit.com**



- The remaining 10% of permits can be submitted online by emailing **permitcenter.DPER@kingcounty.gov**



Online permits – MyBuildingPermit.com

- Adult Family Home Inspections
- Boundary Line Adjustments
- Code Interpretations
- Critical Areas Designation
- Damage Inspection Report
- Fire & Fuel Tank Permits, all types
- Legal Lot Determination
- Mechanical Permits
- Residential Permits, all types
- Shoreline Exemption
- Signs
- Special Events
- Zoning and Historical Certification





Office of Emergency Management

Department of Executive Services

Michelle Chatterton

Public Information Officer

Michelle.Chatterton@kingcounty.gov



King County
Local Services

Personal preparedness: Who depends on you?

Know your hazard

- What are you at risk for? www.hazardready.org
- Note: they may be different depending where you spend your time

Preparedness is key

- Have a kit
 - Minimum: Food, water, shelter
 - Think about work, transportation, home
 - Customize! Think about pets, medications, baby items, communications, comfort items, medical equipment!
 - To do! Watch [Kit on Shoestring Budget](#) (YouTube video)
- Create a plan
 - Consider how to communicate with loved ones
 - Who will support your family? Who can you support?
- **Flood season and winter weather are coming up!**

Did you know??

- You should have 1 gallon of water per person
- The food in your kit should have a long shelf life and match your dietary needs
- You should carry a few small cash bills with you.

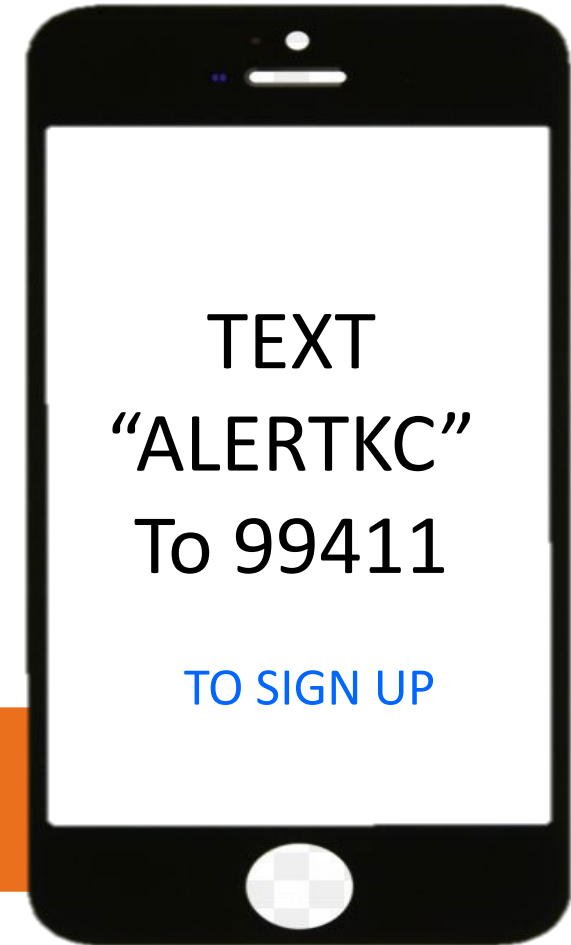


Be informed and stay safe with ALERT King County

Timely messages about:

- Emergency situations relevant to your specific area
- Threats to public safety and health
- Significant impacts to major infrastructure

www.kingcounty.gov/alert



King County
Local Services

Need more information?

- Get up-to-date information during an emergency
www.kcemergency.com
- Explore King County specific information
www.kingcounty.gov/prepare
- Want winter weather preparedness information:
www.takewinterbystorm.org
- Need information on how to get prepared?
www.makeitthrough.org



Natural Resources and Parks

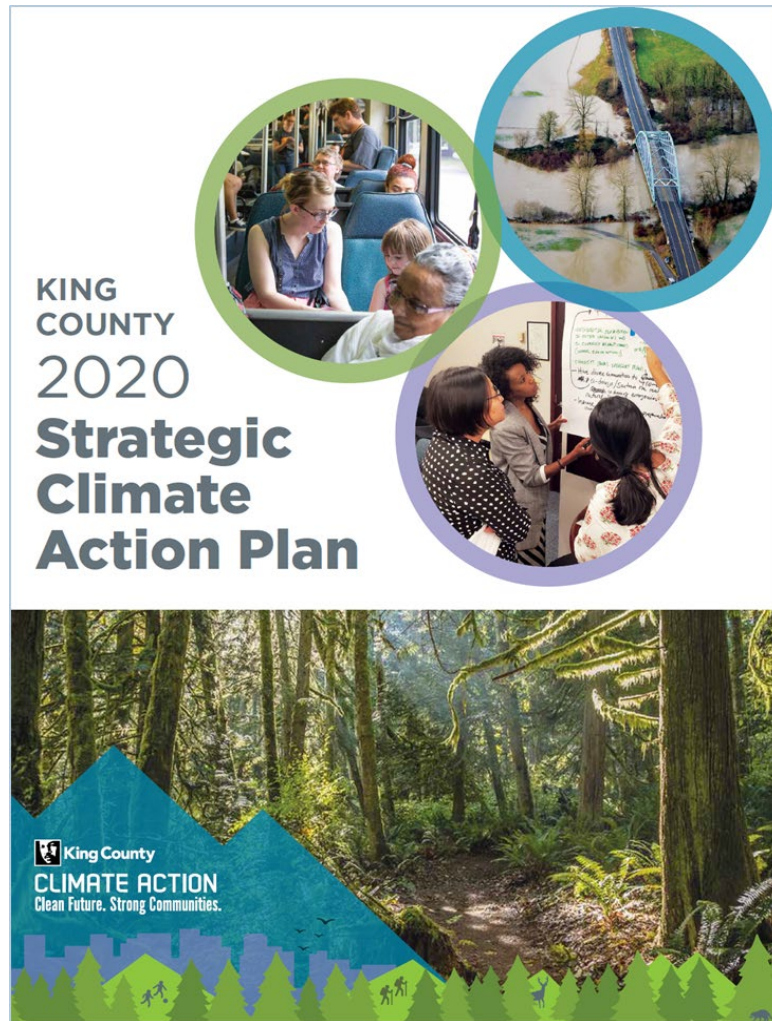
Mo McBroom

Deputy Director



King County
Local Services

Environmental plans



Northeast Recycling and Transfer Station Project

Parks Projects

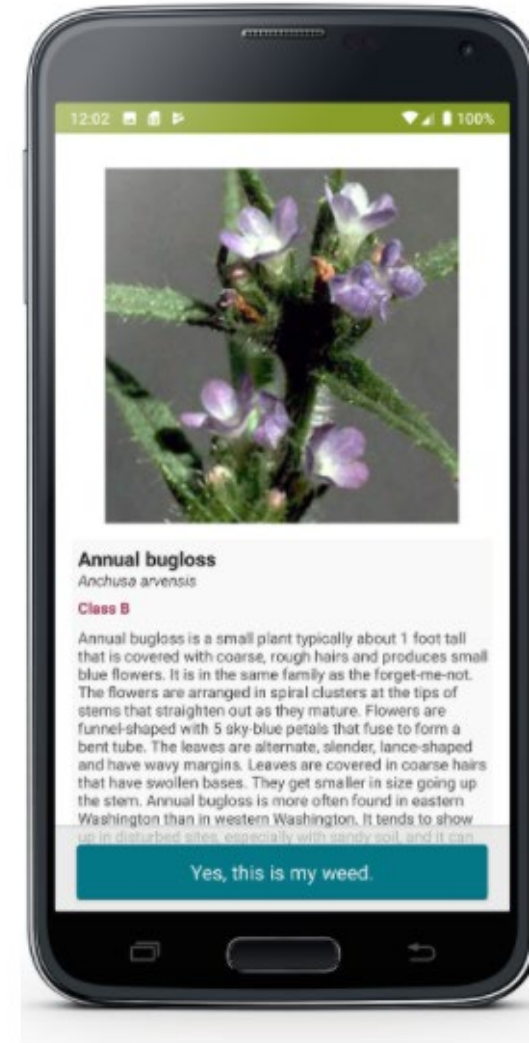
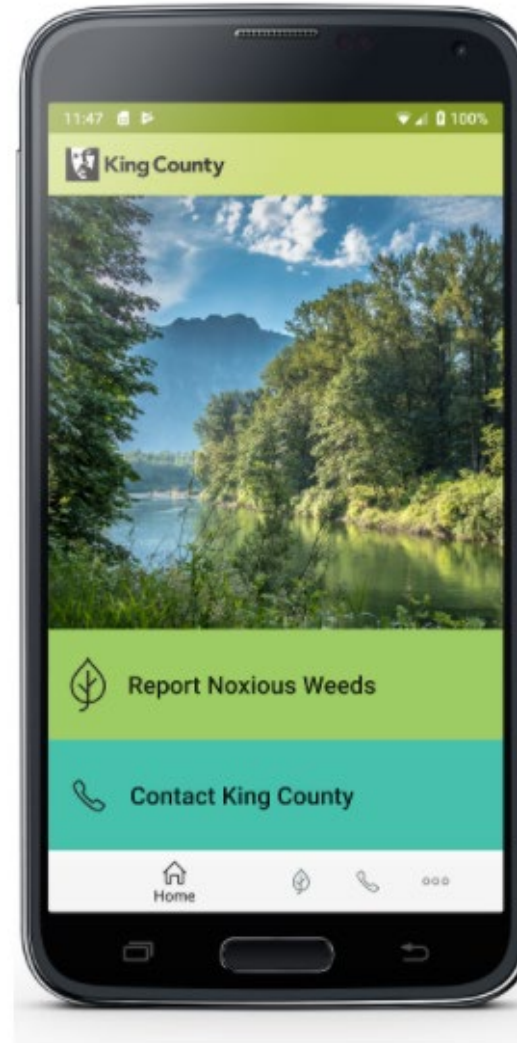
- Sammamish River Trail
- Gold Creek Park



King County
Local Services

Programs and Services

- Litter and illegal dumping program
kingcounty.gov/report-dumping
- Noxious weeds app
kingcounty.gov/noxious-weeds
- Managing Stormwater
kingcounty.gov/stormwater
- Local food finder
farmkingcounty.org/local-food-finder
- Changes to King County Park Services
kingcountyparks.org/covid



King County
Local Services

Questions & comments



Closing remarks

**Councilmember Kathy Lambert
District 3**

Kathy.Lambert@kingcounty.gov

<https://www.facebook.com/lambert.kathy>



Survey

- Did you find this meeting valuable?
- Have you been to a Local Services Town Hall before?
- Were your questions answered?



Thank you for joining us tonight!

Email: ASKLocalServices@kingcounty.gov

<https://kingcounty.gov/local-services>



King County
Local Services