

BLS Subcommittee

Medic One/EMS Strategic Plan & Levy Reauthorization

**Thursday, March 8,
2018 1:00 PM – 3:00 PM
Renton Fire Station #14
1900 Lind Ave SW, Renton**

**Chair: Denis Law, Mayor of Renton
Alternate: Vic Kave, Councilmember, City of Pacific**

Agenda

- **Opening Remarks & Introductions** (10 minutes)
 - **Report from Other Subcommittees** (10 minutes)
 - **Follow-up and Discussion on Information Requested** (45 minutes)
 - Data requests for allocation discussion
 - Population info
 - Economic Forecast
 - Funding
 - **BLS Priorities** (45 minutes)
 - **Next Steps** (10 minutes)
-

Future Meetings of the BLS Subcommittee

Thursdays, 1:00 pm - 3:00 pm at various Renton sites

April 5, 2018	Renton City Hall, Council Chambers, 7 th Floor	1055 South Grady Way
May 3, 2018	Renton City Hall, Council Chambers, 7 th Floor	1055 South Grady Way
June 7, 2018	Renton Fire Station 14	1900 Lind Ave SW
July 12, 2018	Renton City Hall, Council Chambers, 7 th Floor	1055 South Grady Way
August 9, 2018	Renton City Hall, Council Chambers, 7 th Floor	1055 South Grady Way
September 6, 2018	Renton City Hall, Council Chambers, 7 th Floor	1055 South Grady Way
October 4, 2018	TBD	

Medic One/EMS Strategic Plan & Levy Reauthorization

EMS STAKEHOLDER PRINCIPLES

As regional EMS Stakeholders, we are committed to these fundamental principles:

1. REGIONAL SYSTEM

The Medic One/EMS system is based on partnerships that are built on regional, collaborative, cross-jurisdictional coordination. This seamless cohesion allows the system to excel in pre-hospital emergency care.

2. TIERED MEDICAL MODEL

The medical model, with its tiered system and intensive dispatch, EMT and paramedic training and protocols, has led to our success in providing high quality patient care throughout the region.

3. PROGRAMS & INNOVATIVE STRATEGIES

State of the art science-based strategies and programmatic leadership have allowed us to meet the needs and expectations of our residents and our system.

4. FOCUS ON COST EFFECTIVENESS AND EFFICIENCIES

The Medic One/EMS system has maintained financial viability and stability due to the region's focus on operational and financial efficiencies, effectiveness and cost savings.

5. MAINTAINING AN EMS LEVY AS FUNDING SOURCE

The EMS levy is a reliable and secure source of funding our world-renowned system.

MEDIC ONE/EMERGENCY MEDICAL SERVICES STRATEGIC PLAN & LEVY REAUTHORIZATION

Future Meetings

EMS Advisory Task Force:

Thursday, April 26, 2018	1 pm – 3 pm	Tukwila Community Center
Tuesday, July 31, 2018	1 pm – 3 pm	2100 Building Community Room B
Tuesday, October 16, 2018	1 pm – 3 pm	Tukwila Community Center

SUBCOMMITTEES:

Advanced Life Support (ALS)	<i>Tuesdays from 1:00 – 3:00, South Seattle location</i>	
February 15, 2018		Renton Fire Station 14
March 15, 2018	1:30 – 3:30	2100 Building Community Room B
April 10, 2018		2100 Building, Community Room A
May 8, 2018		2100 Building, Community Room A
June 12, 2018		2100 Building, Community Room A
July 10, 2018		TENTATIVE - 2100 Building
August 14, 2018		TENTATIVE - 2100 Building
September 11, 2018		TENTATIVE - 2100 Building
October 9, 2018		TENTATIVE - 2100 Building

Basic Life Support (BLS)	<i>Thursdays from 1:00 – 3:00, various Renton sites</i>	
February 8, 2018		Renton Fire Station 14
March 8, 2018		Renton Fire Station 14
April 5, 2018		Renton City Hall, Council Chambers, 7 th Floor
May 3, 2018		Renton City Hall, Council Chambers, 7 th Floor
June 7, 2018		Renton Fire Station 14
July 12, 2018		Renton City Hall, Council Chambers, 7 th Floor
August 9, 2018		Renton City Hall, Council Chambers, 7 th Floor
September 6, 2018		Renton City Hall, Council Chambers, 7 th Floor
October 4, 2018		TBD

Regional Services (RS)	<i>Tuesdays from 1:00 – 3:00, Renton location</i>	
February 20, 2018		City of Seattle Joint Training Facility
March 20, 2018		Renton Highlands Library conference room
April 17, 2018		Renton Highlands Library conference room
May 15, 2018		Renton Highlands Library conference room
June 19, 2018		TENTATIVE - Renton Highlands Library
July 17, 2018		TENTATIVE - Renton Highlands Library
August 21, 2018		TENTATIVE - Renton Highlands Library
September 18, 2018		TENTATIVE - Renton Highlands Library

Finance	<i>Tuesdays or Thursdays 1:00 – 3:00, Kirkland location</i>	
February 1, 2018 (Thursday)		Renton Fire Station 14 (1900 Lind Ave SW)
April 19, 2018 (Thursday)		Peter Kirk Room, Kirkland City Hall
July 24, 2018 (Tuesday)		Peter Kirk Room, Kirkland City Hall
September 25, 2018 (Tuesday)		Peter Kirk Room, Kirkland City Hall

LOCATIONS:

Renton Fire Station 14
1900 Lind Ave SW, Renton

Phone: (425) 430-7000

City of Seattle Joint Training Facility
9401 Myers Way South, Seattle

Phone: (206) 386-1600

The 2100 Building
2100 24th Ave S, Seattle

Phone: (206) 407-2100

Renton City Hall
1055 South Grady Way, Renton

Phone: (425) 430-6400

Kirkland City Hall
123 5th Ave, Kirkland, WA

Phone: (425) 587-3000

Renton Highlands Library conference room
2801 NE 10th Street, Renton

Phone: (425) 277-1831

EMS Advisory Task Force
Medic One/EMS Levy Reauthorization Calendar

2018

JANUARY

S	M	T	W	Th	F	S
	H1	2	3	4	5	6
7	8	9	10	11	12	13
14	H15	16	17	IF	18	19
20	21	22	23	24	25	26
27	28	29	30	31		

FEBRUARY

S	M	T	W	Th	F	S
				FIN	1	2
				BLS	8	9
4	5	6	7	8	9	10
11	12	ALS	13	14	15	16
17	18	RS	19	20	21	22
23	24	25	26	27	28	29

MARCH

S	M	T	W	Th	F	S
				1	2	3
				BLS	8	9
4	5	6	7	8	9	10
11	12	13	14	ALS	15	16
17	18	19	RS	20	21	22
23	24	25	26	27	28	29

ALS - revised

APRIL

S	M	T	W	Th	F	S
				BLS	5	6
1	2	ALS	10	11	12	13
14	15	RS	17	FIN	18	19
20	21	22	23	IF	24	25
26	27	28	29	30		

MAY

S	M	T	W	Th	F	S
				BLS	3	4
		1	2	3	4	5
6	7	ALS	8	9	10	11
12	13	RS	14	15	16	17
18	19	20	21	22	23	24
25	26	27	H28	29	30	31

JUNE

S	M	T	W	Th	F	S
					1	2
				BLS	7	8
3	4	5	6	7	8	9
10	11	ALS	12	13	14	15
16	17	RS	18	19	20	21
22	23	24	25	26	27	28

JULY

S	M	T	W	Th	F	S
			H4	5	6	7
8	9	ALS	10	BLS	12	13
14	15	RS	17	18	19	20
21	22	FIN	24	25	26	27
28	29	IF	31			

AUGUST

S	M	T	W	Th	F	S
				1	2	3
				BLS	9	10
5	6	7	8	9	10	11
12	13	ALS	14	15	16	17
18	19	RS	20	21	22	23
24	25	26	27	28	29	30

SEPTEMBER

S	M	T	W	Th	F	S
						1
				BLS	6	7
2	H3	4	5	6	7	8
9	10	ALS	11	12	13	14
15	16	RS	18	19	20	21
22	23	FIN	25	26	27	28
29	30					

OCTOBER

S	M	T	W	Th	F	S
		1	2	BLS	4	5
		7	H8	9	10	11
12	13	IF	16	17	18	19
20	21	22	23	24	25	26
27	28	29	30	31		

NOVEMBER

S	M	T	W	Th	F	S
				1	2	3
4	5	6	7	8	9	10
11	H12	13	14	15	16	17
18	19	20	21	H22	H23	24
25	26	27	28	29	30	

DECEMBER

S	M	T	W	Th	F	S
						1
2	3	4	5	6	7	8
9	10	11	12	13	14	15
16	17	18	19	20	21	22
23	24	H25	26	27	28	29
30	31					

Econ forecasts: 3/7-3/14; 7/18-7/27; 8/17-8/27

2/14/2018

 Task Force
 Finance Subcommittee
 ALS Subcommittee
 BLS Subcommittee
 Regional Services Subcommittee

Changes made from previous version:

March ALS meeting moved (back by 2 days)

July FINANCE meeting moved (up by 2 days)

September FINANCE meeting moved (up by 2 days)

October TASK FORCE meeting moved (pushed back to the next week)

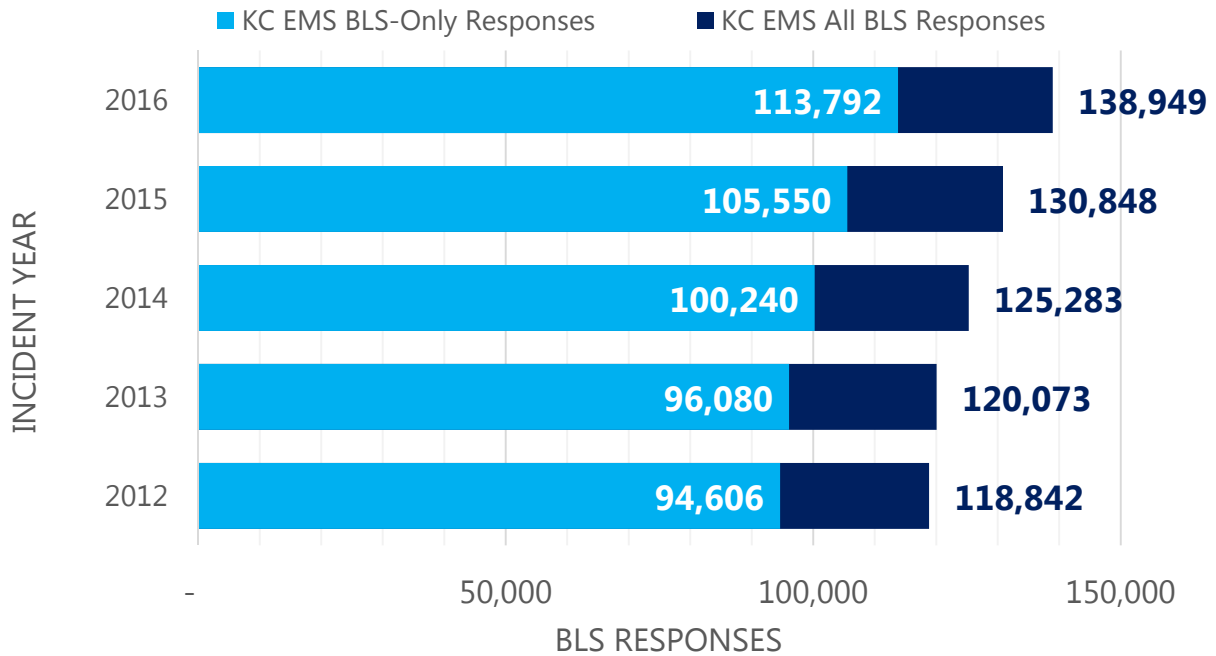
BLS SUBCOMMITTEE MEETING 3-8-2018

DATA REQUESTS

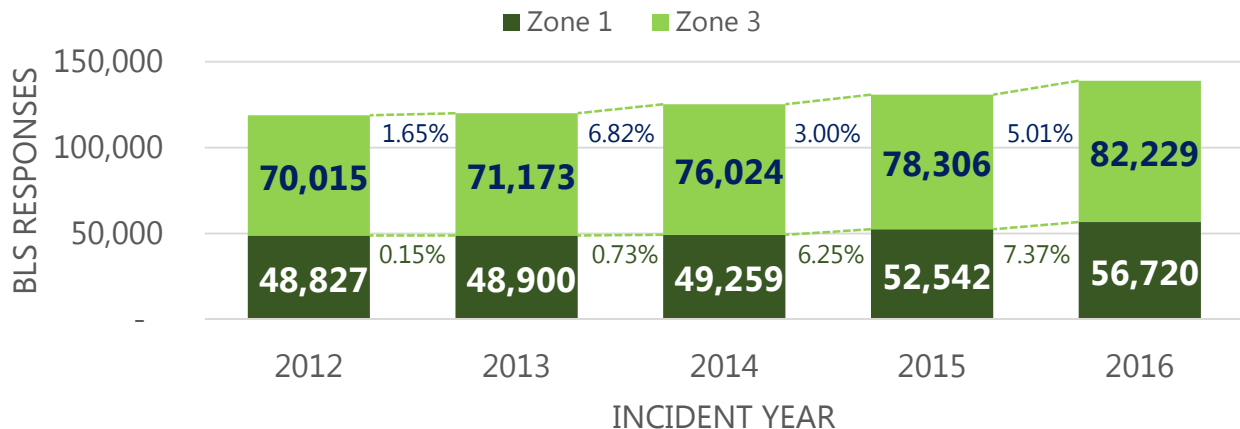
KC EMS BLS-Only & All BLS Responses - Key Points:

- BLS responses have steadily increased at a rate of 2-7% annually
- Approximately 80% of BLS responses involved BLS-only resources
- Approximately 20% of BLS responses involved both BLS and ALS resources
- Zone 1 responds to approximately 40% of all BLS responses
- Zone 3 responds to approximately 60% of all BLS responses

BLS-ONLY RESPONSES & ALL BLS RESPONSES (2012-2016)



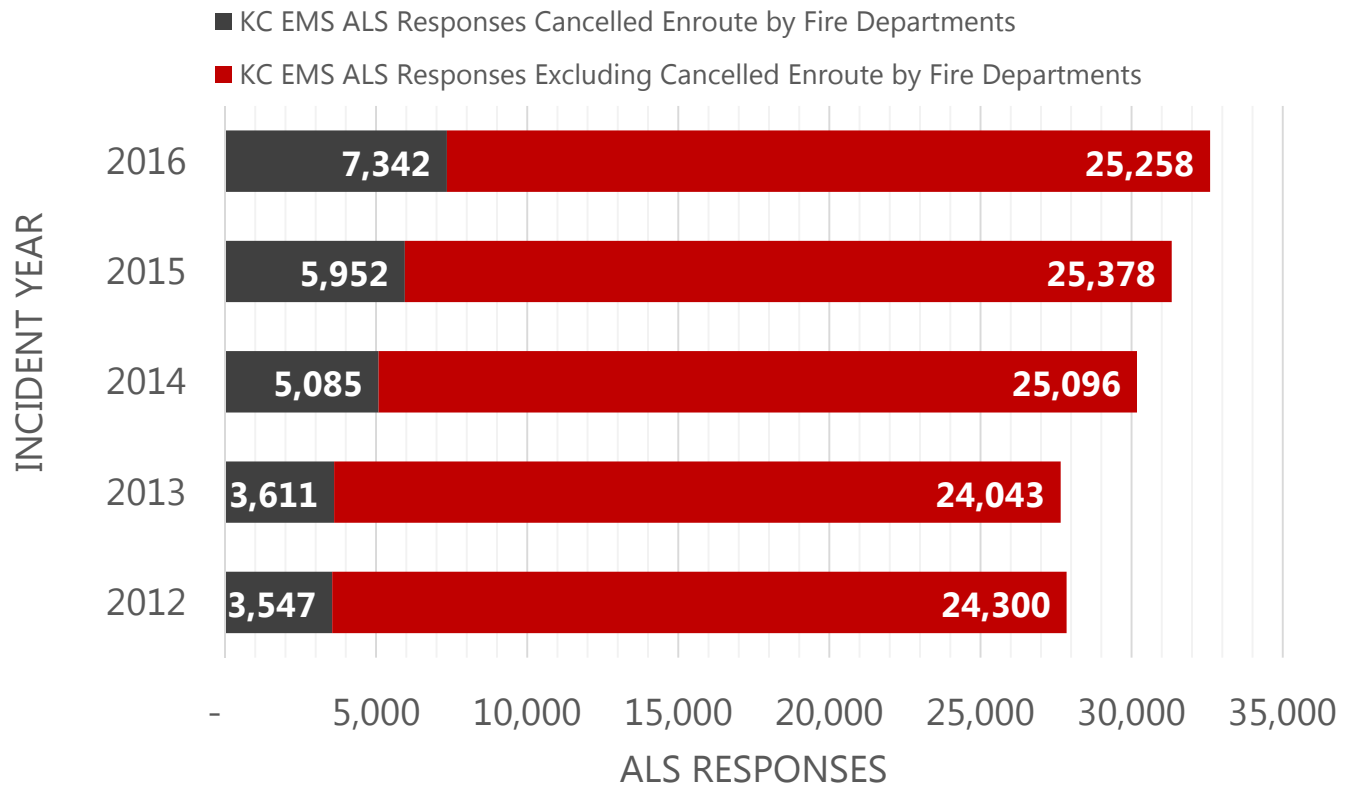
ALL BLS RESPONSES BY ZONE (2012-2016)



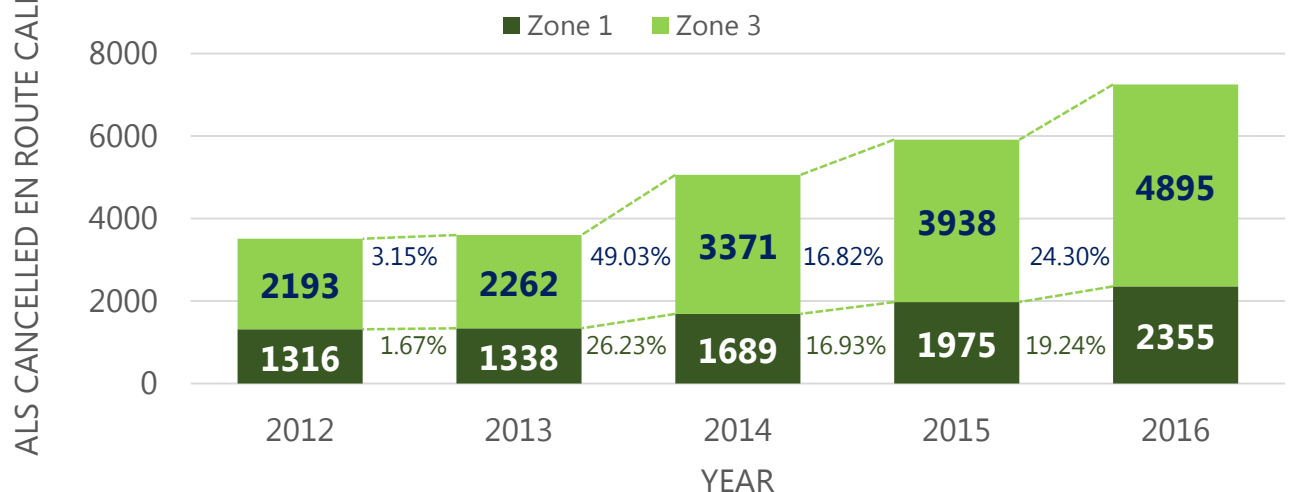
KC EMS ALS Responses & Cancelled Calls by BLS - Key Points:

- On average, ALS responds to approximately 30,000 calls jointly with BLS
- On average, approximately 17% of ALS responses are cancelled enroute by BLS
- BLS cancelled calls for ALS increased in Zone 3 and is being discussed with the Dispatch Workgroup

BLS CANCELLED ALS CALLS ENROUTE & ALS RESPONSES (2012-2016)



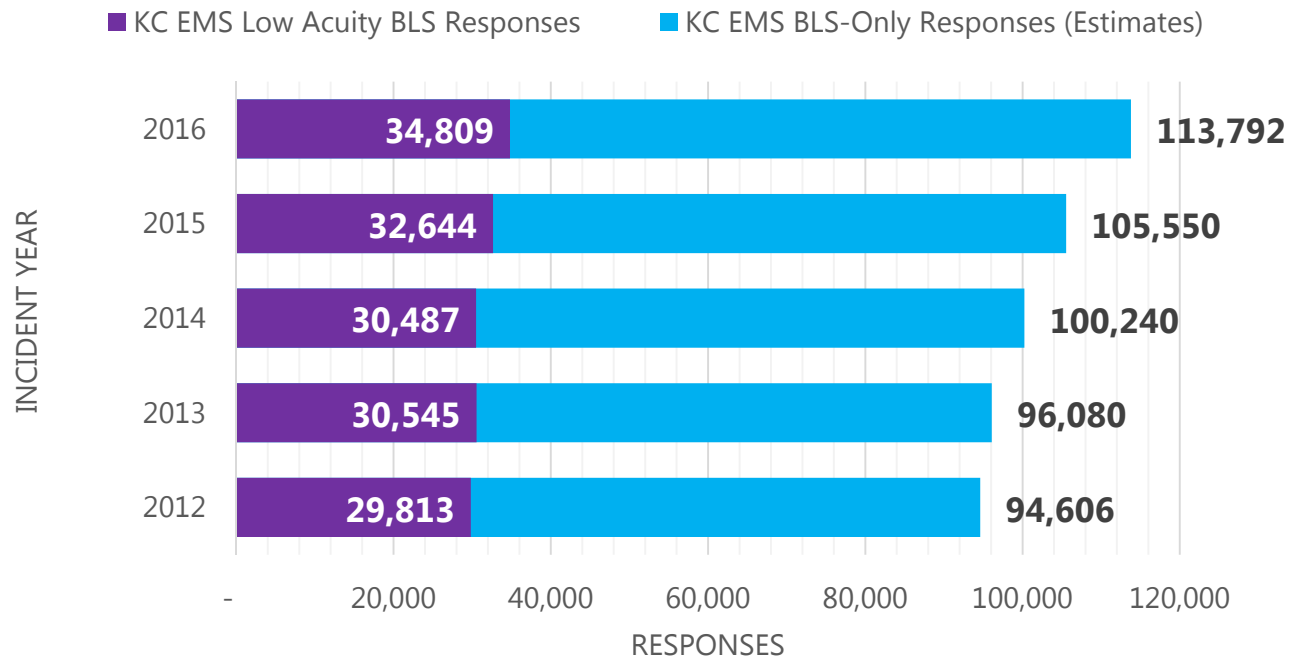
ALS CANCELLED ENROUTE CALLS BY BLS BY ZONE (2012-2016)



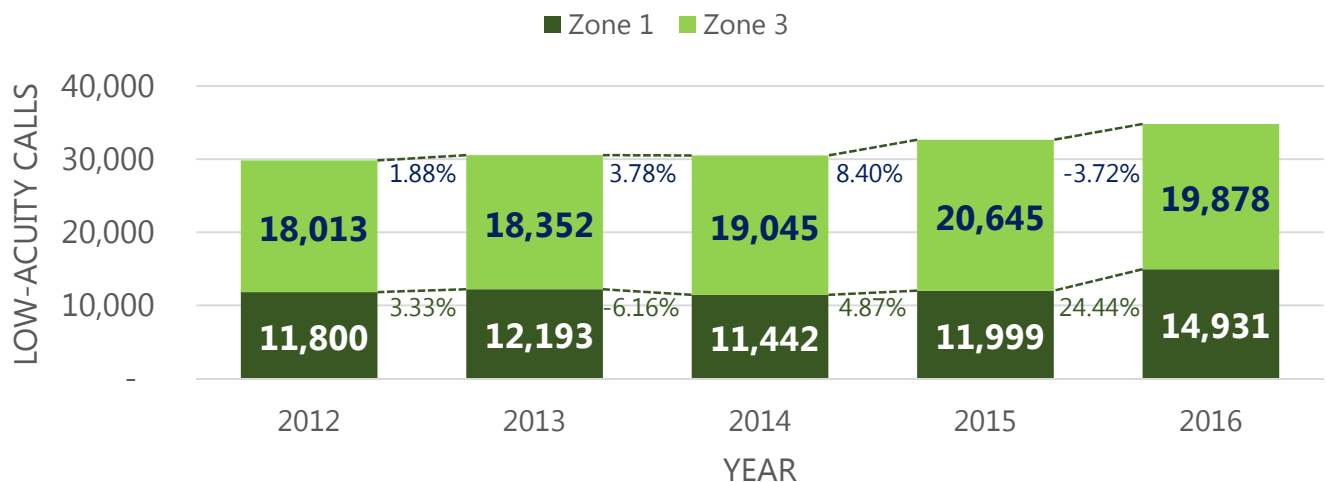
KC EMS Low-Acuity Responses & BLS-Only Responses - Key Points:

- On average, agencies respond to approximately 32,000 low-acuity calls annually
- Low-acuity calls (IDCs Y/T, no patient, cancelled calls) account for approximately 25% of all BLS-only calls
- Zone 1 responds to approximately 40% of all low acuity calls
- Zone 3 responds to approximately 60% of all low acuity calls

LOW-ACUITY RESPONSES & BLS-ONLY RESPONSES (2012-2016)



LOW-ACUITY CALLS BY ZONE (2012-2016)



King County's Changing Demographics

Investigating Recent Growth Trends

Chandler Felt, Demographer

King County Office of Performance, Strategy and Budget

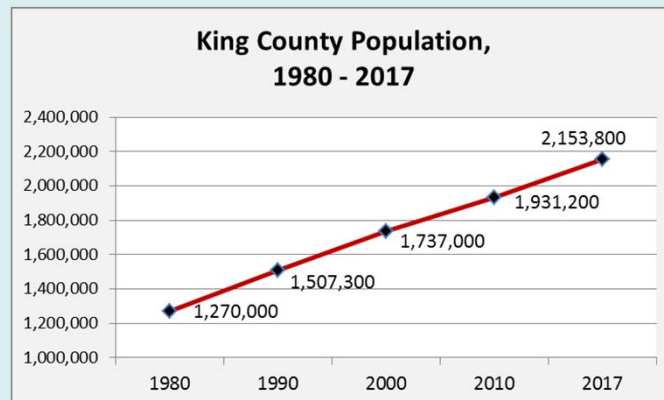
King County Emergency Medical Services, January 31, 2018

-Contact info:

(206) 263 – 9693

Chandler.felt@kingcounty.gov

Long range trend: steady growth



The county's population has grown 70% in 37 years. Fairly steady growth, although somewhat faster in just the last 4 years.

King County's Changing Demographics

Investigating Recent Growth Trends

Chandler Felt, Demographer

King County Office of Performance, Strategy and Budget

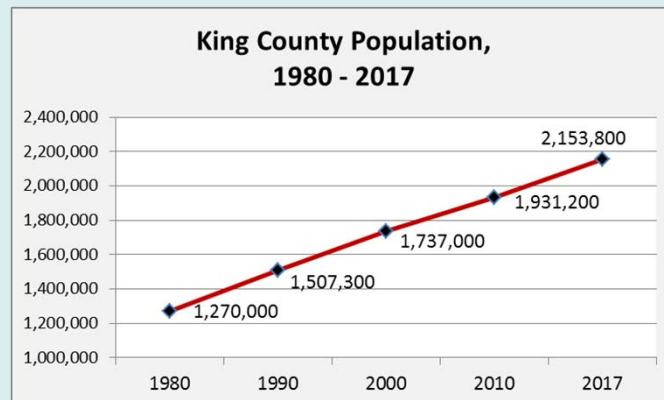
King County Emergency Medical Services, January 31, 2018

-Contact info:

(206) 263 – 9693

Chandler.felt@kingcounty.gov

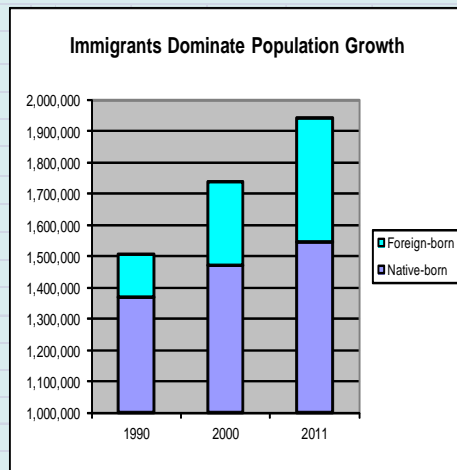
Long range trend: steady growth



The county's population has grown 70% in 37 years. Fairly steady growth, although somewhat faster in just the last 4 years.

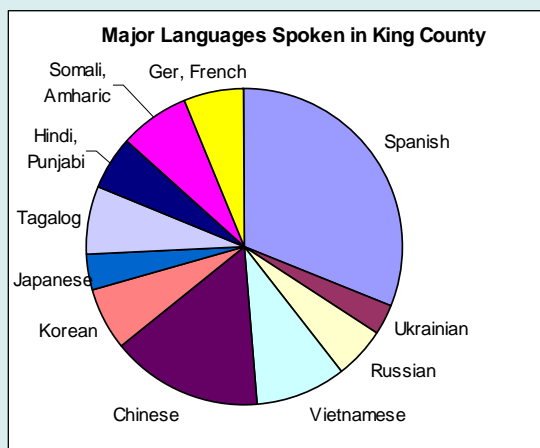
More than half of our recent growth is immigration

King County Population Trend by Place of Birth			
	1990	2000	2011
Native-born	1,366,700	1,468,700	1,544,500
Foreign-born	140,600	268,300	395,100
Total pop.	1,507,300	1,737,000	1,939,600



Where is our growth coming from?

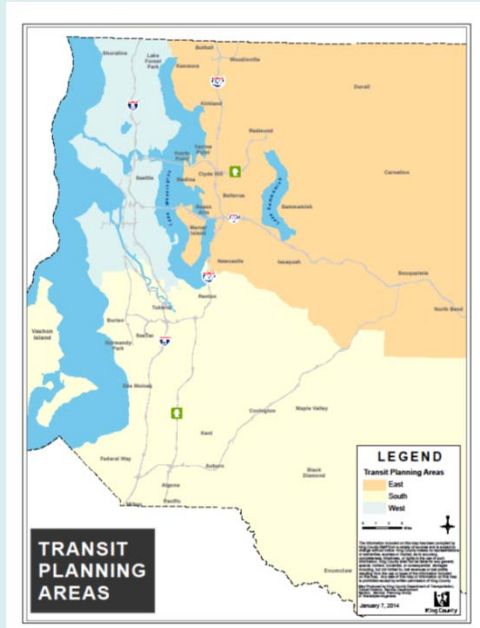
King County residents speak 170 different languages



Spanish	102,000
Ukrainian	10,000
Russian	17,700
Vietnamese	30,200
Chinese	51,000
Korean	21,100
Japanese	11,300
Tagalog	22,900
Hindi, Punjabi	18,400
Somali, Amharic	23,400
Ger, French	20,400
Other	73,500
	<hr/>
	401,900

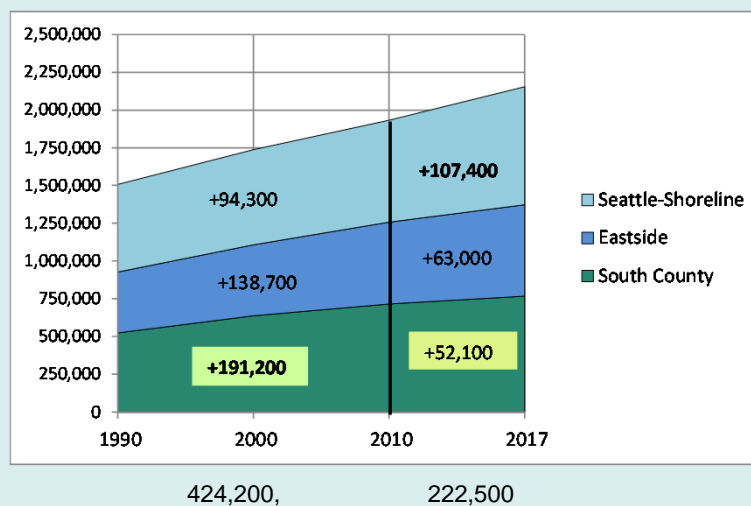
Three broad subareas of King County:

- Seattle-Shoreline
- Eastside
- South King County



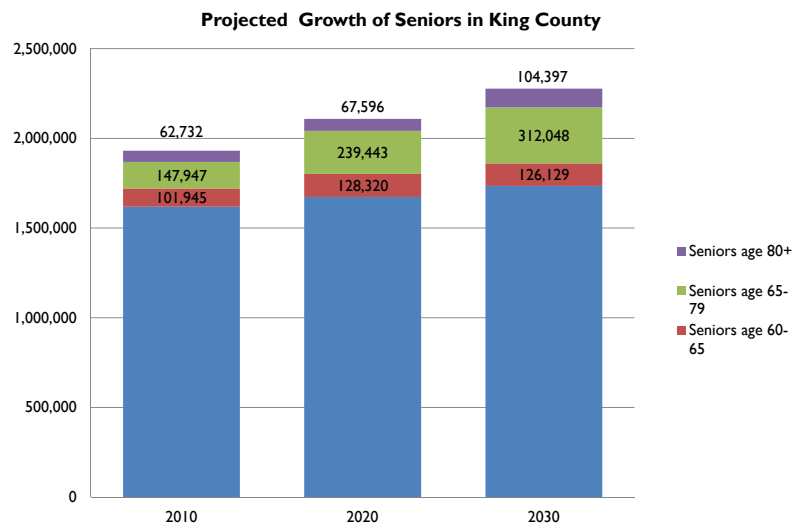
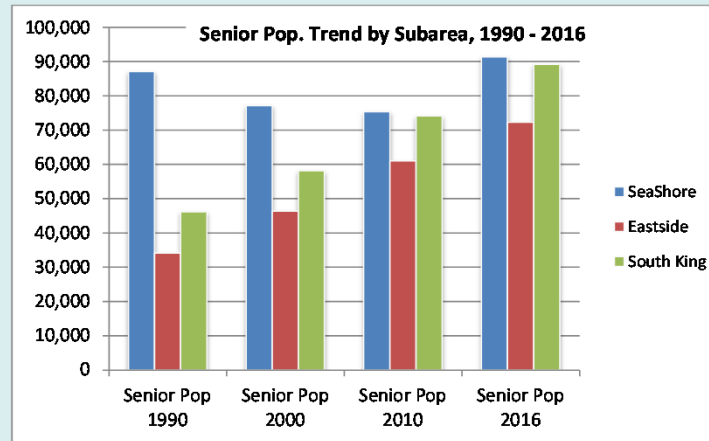
Population growth: more than 600,000 in 27 years

Growth is shifting FROM South King County TO Seattle

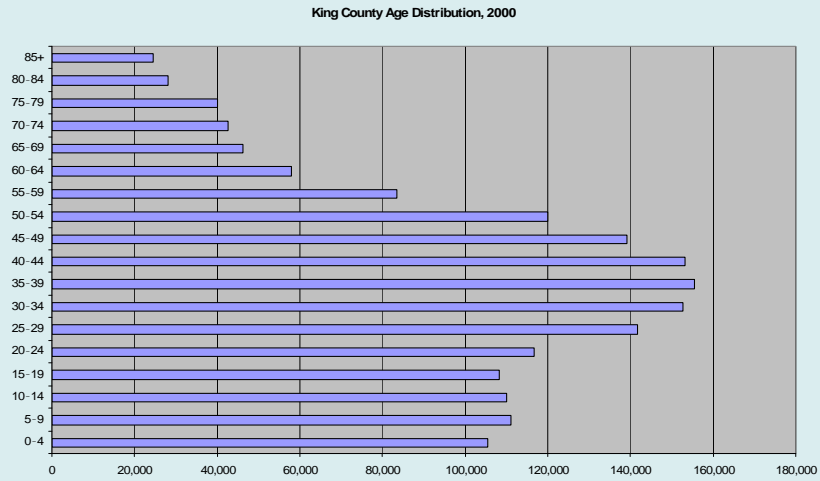


Since 2010, Growth of Senior Pop All Over

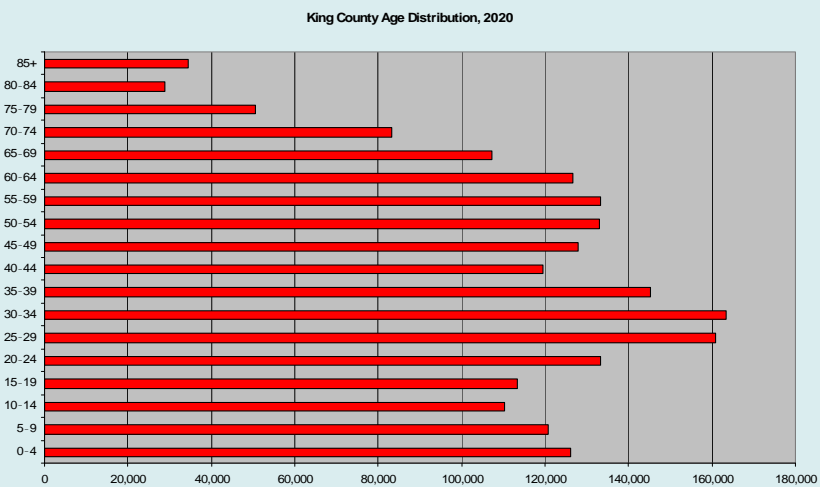
Over-65 pop by subarea, 1990 - 2016



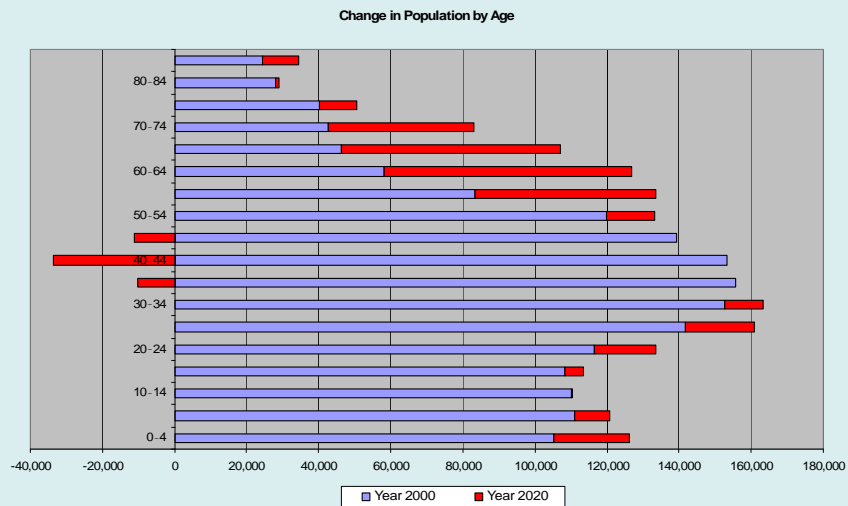
King County age distribution in 2000



King County age distribution in 2020



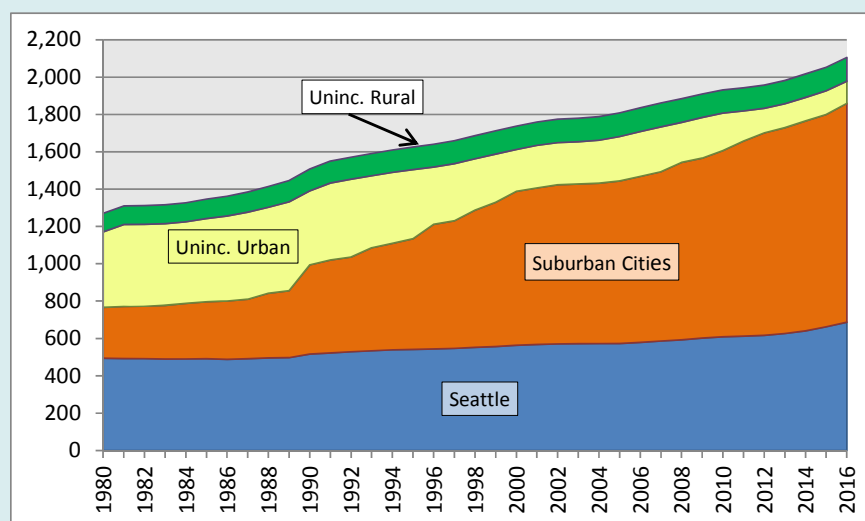
20-year change: boomers, young adults, pre-schoolers



Unincorporated King County: dwindling share of population

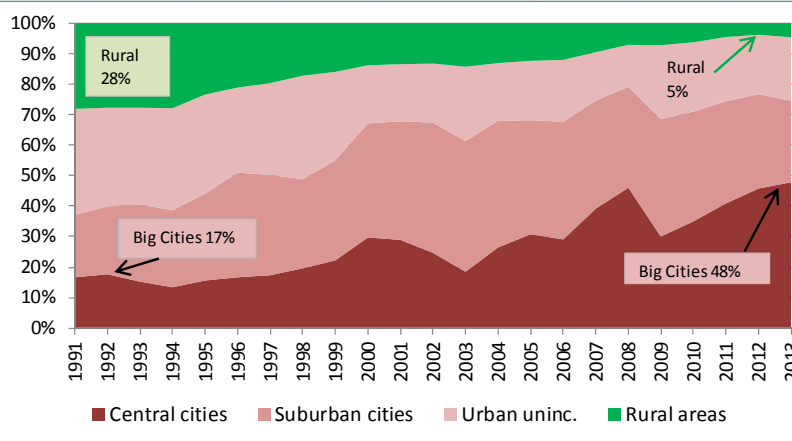
Change in Jurisdictions, 1980 – 2016

(Population in thousands)



20+ years of shifting growth patterns: redirecting growth from rural and fringe into center

Percent of New Housing Units in Puget Sound Region, 1991 - 2013



really

What future trends can we [↑] expect?

- Continuing population growth in Puget Sound.
- Continuing increase in diversity of cultures...??
- Perhaps **Probably** increasing disparity between communities.
- Growth in Seattle and the suburban cities - less growth on the fringe.
- Pop growth and housing price increase: slowing soon?
- Continuing shift from unincorporated into cities – or not

2018 King County Economic and Revenue Forecast (Abridged for BLS Subcommittee)

Presentation to the Medic One/EMS Financial Subcommittee

Originally presented:
February 1st, 2018

Dave Reich
Office of Economic and Financial Analysis



Overview

2017 continued many of the trends we've seen since the end of the recession

Lots of worry about “episodic volatility” due to a very stable genius

But overall economic conditions were pretty good

Growth will finish around 2%-2.5% (we've averaged 2.2% this expansion)

Job adds around 170K/month

Unemployment at 4.1% in December

Fed raises FF rate target three times in 2017

2018 looks faster, lower and higher

Growth looks to pick up a little on fiscal stimulus and momentum (2.5% - 2.8%)

Should achieve second longest expansion on record (after April, 2018)

Unemployment may fall to lowest level since the 1960s (<3.8%)

Inflation likely to pick up a little

Housing market continues growth

Biggest risk/uncertainty; federal gov., stock market

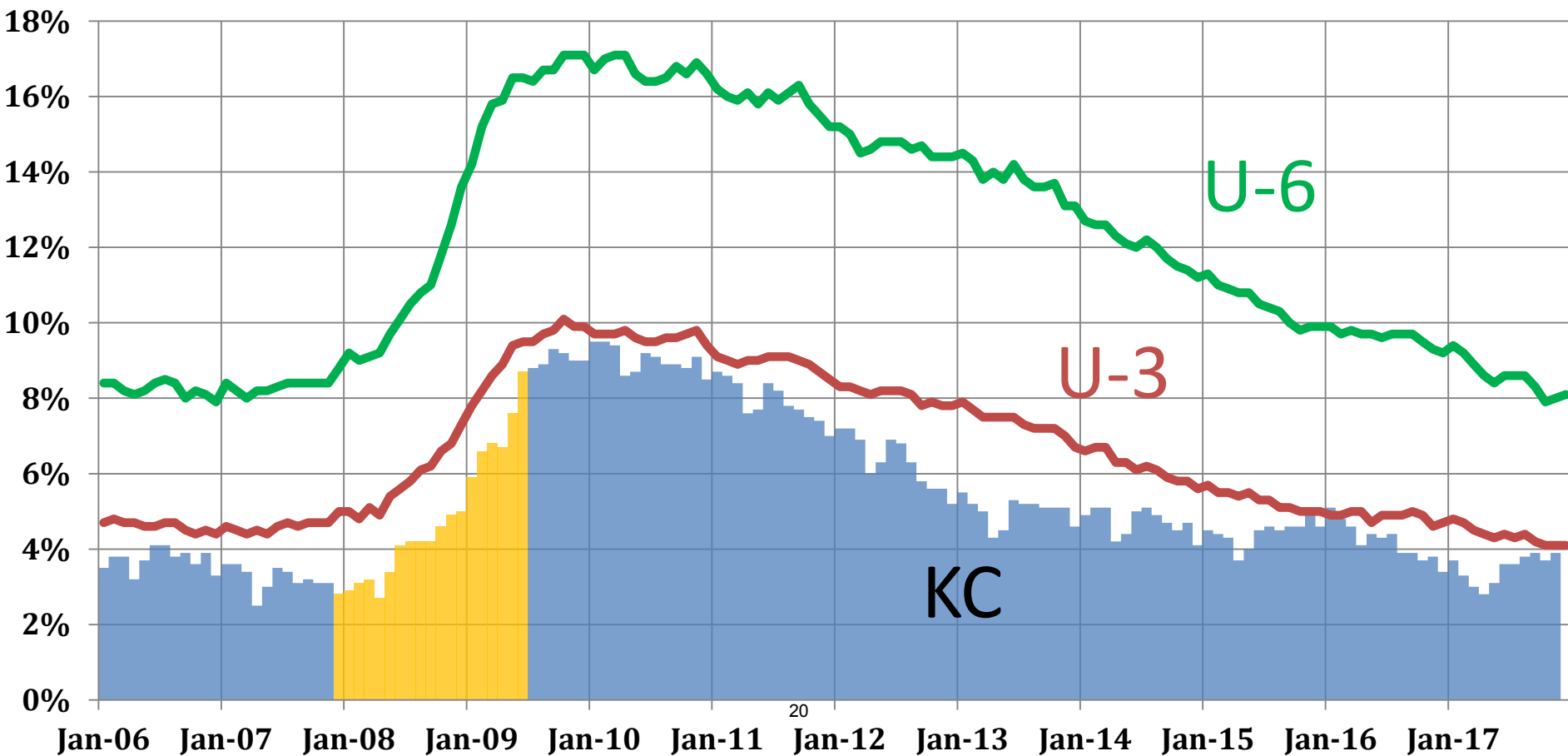
...And unemployment is reaching levels not seen for years



Unemployment Rates: U.S. & King County

Recession (bar), King County (bar), U.S. U3 (line), U.S. U6 (line)

Source: Bureau of Labor Statistics



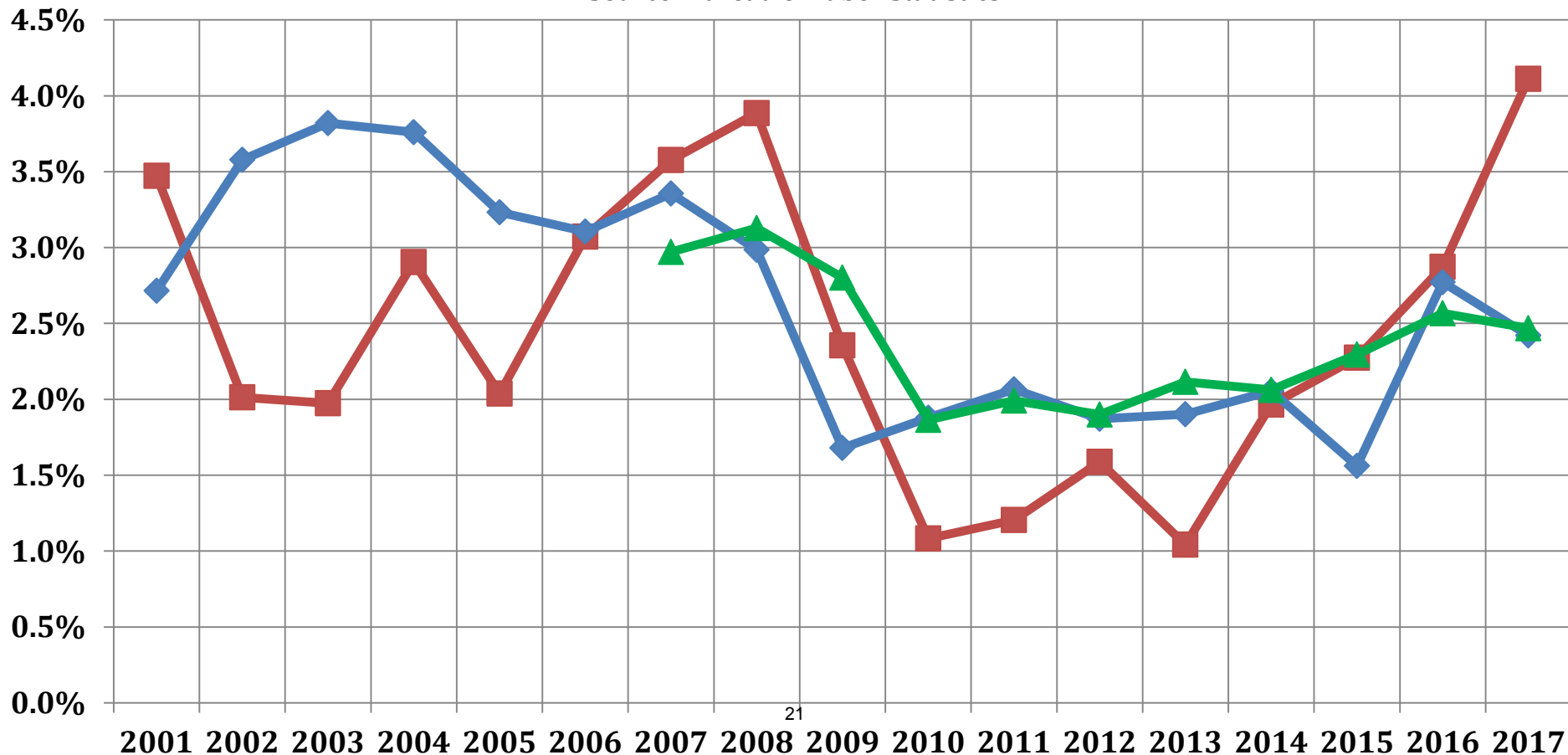
This reduced labor slack is leading to rising wages



U.S. Employment Compensation Growth

NSA employee cost index, nominal wage growth, and avg. hourly earnings

Source: Bureau of Labor Statistics



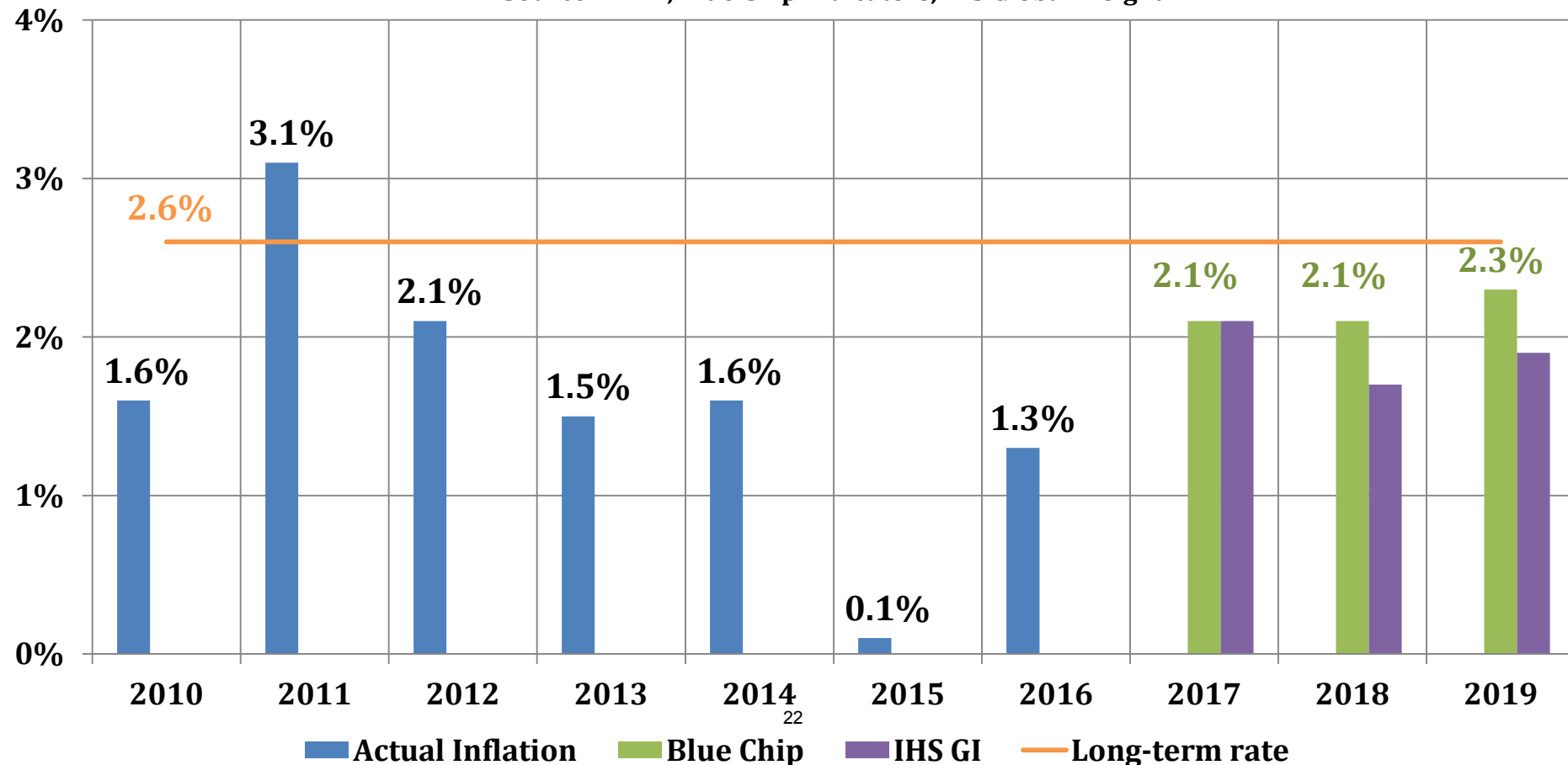
CPI Inflation is expected to be pretty stable



U.S. Inflation Growth

Actuals 2010-2016, Forecast 2017-2019, LR Rate 1986-2016

Source: FRED, Blue Chip Indicators, IHS Global Insight



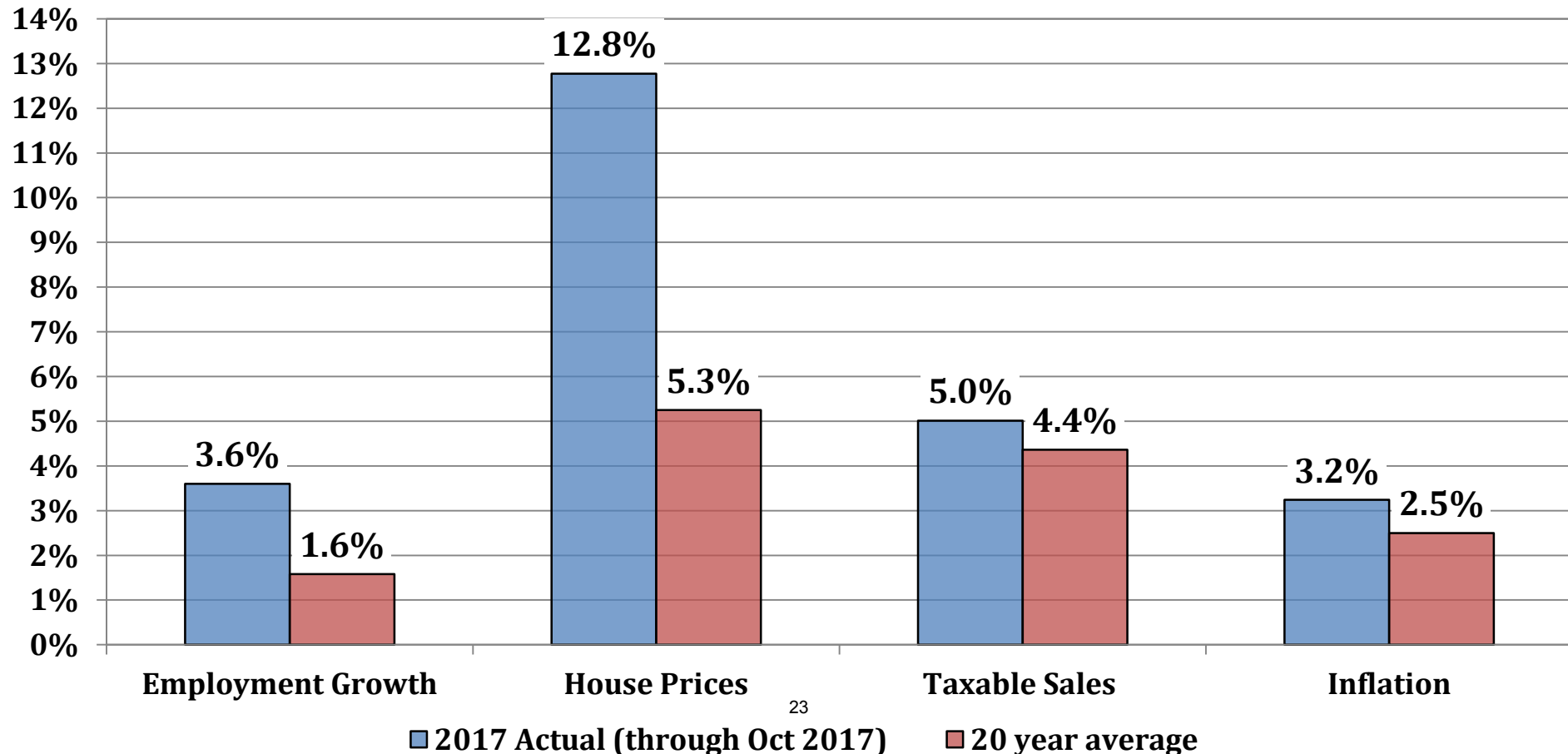
2017 was another year of growth for King County's economy



King County Economic Indicators

2017 actuals vs. 20 year average

Source: PSEF, Case-Shiller, WA DOR, BLS



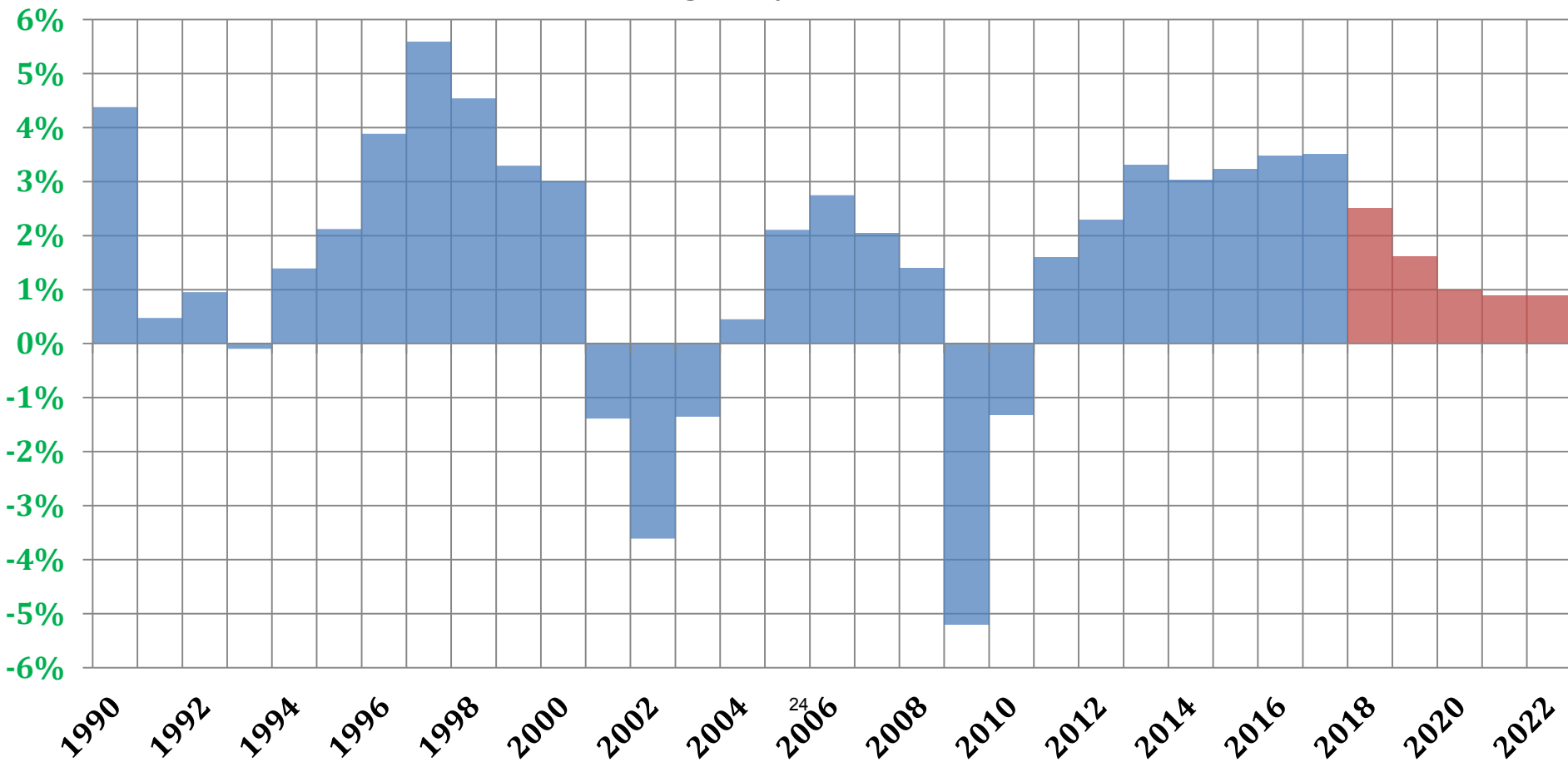
Local job growth for seventh straight year with more likely to come!



King County Annual Employment Growth

With Actuals and Forecast bars

Source: King County Forecast Model Q4 2017



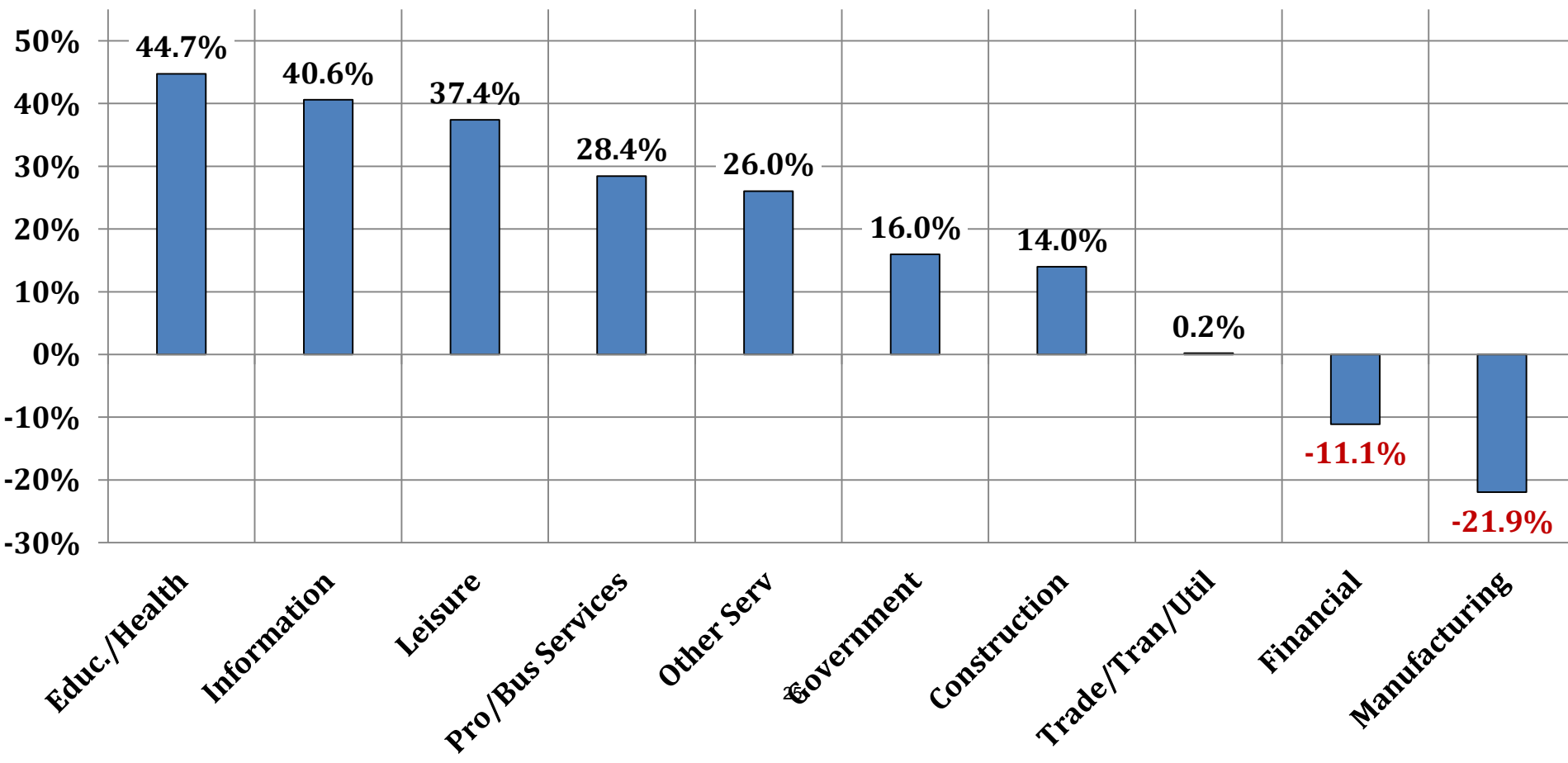
Employment growth by industry has been variable



Employment Growth by Sector

Total growth from 2000 to 2017

Source: WA ESD



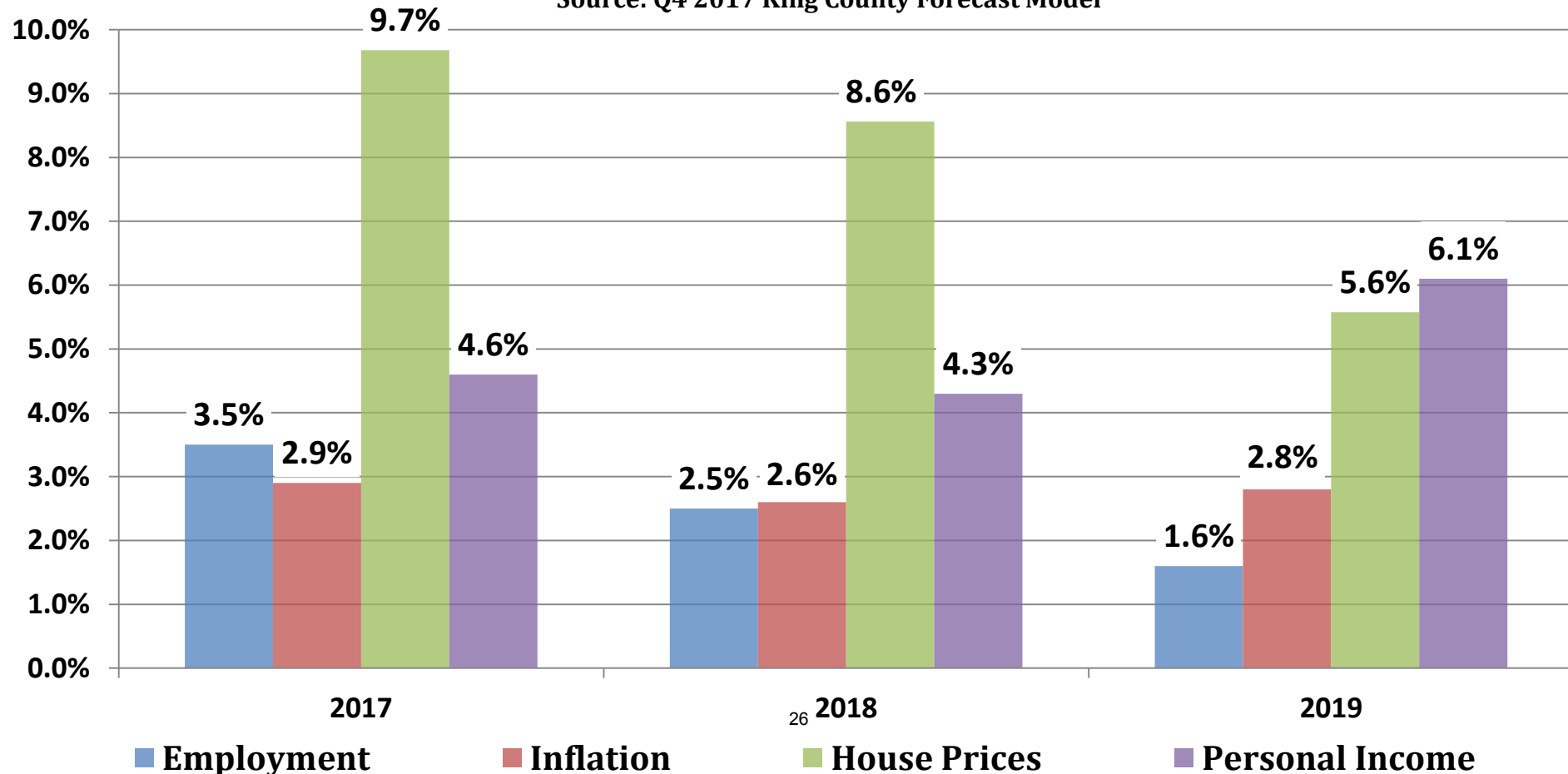
The KC forecast for 2018-2019 calls for growth but at a little slower pace



Employment, Inflation, Housing & Income

Actual 2017, Forecast 2018-2019

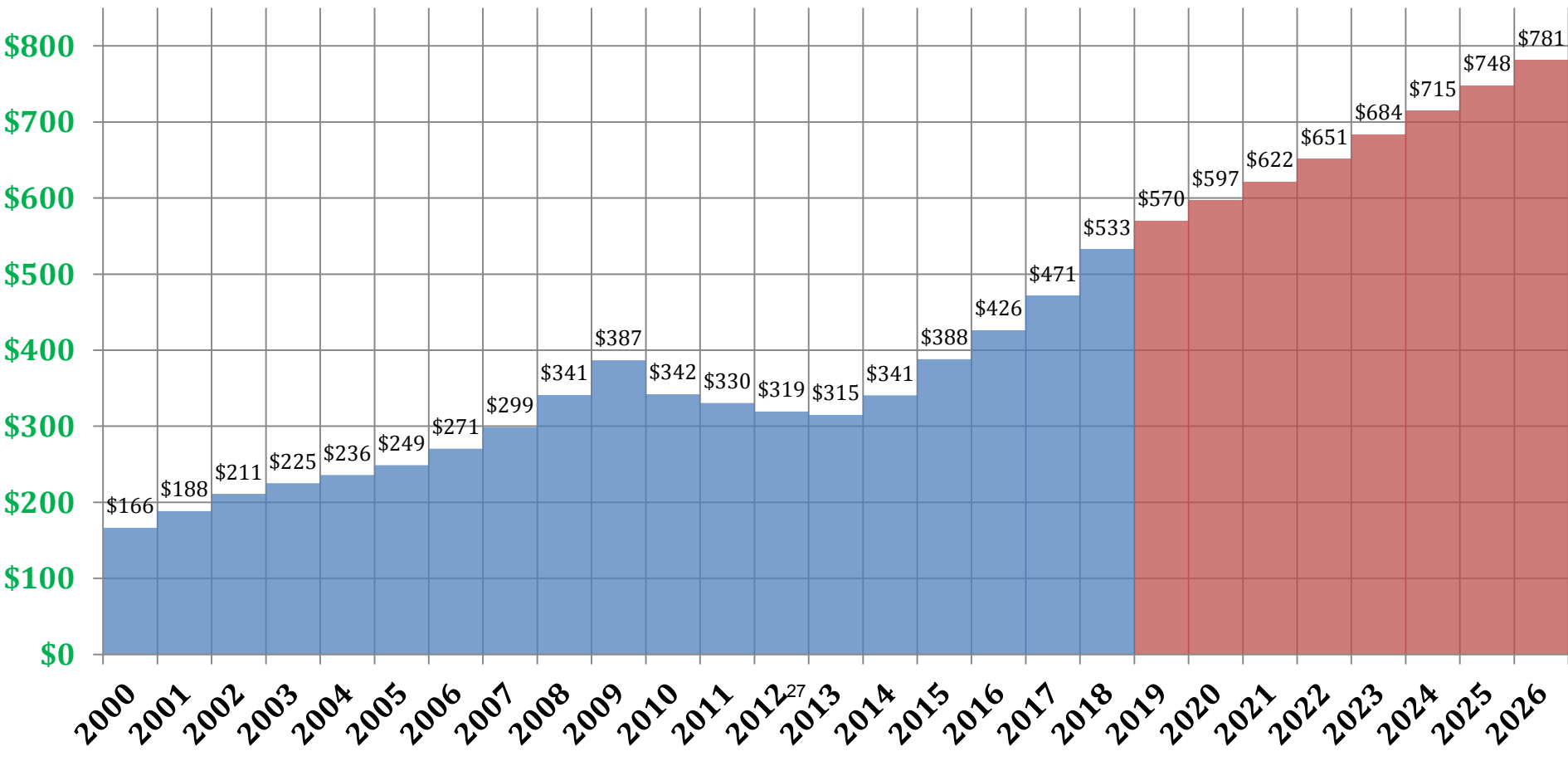
Source: Q4 2017 King County Forecast Model



King County Assessed Value



King County Assessed Value
In billions \$, with Actuals and Forecast bars
Source: King County Department of Assessments



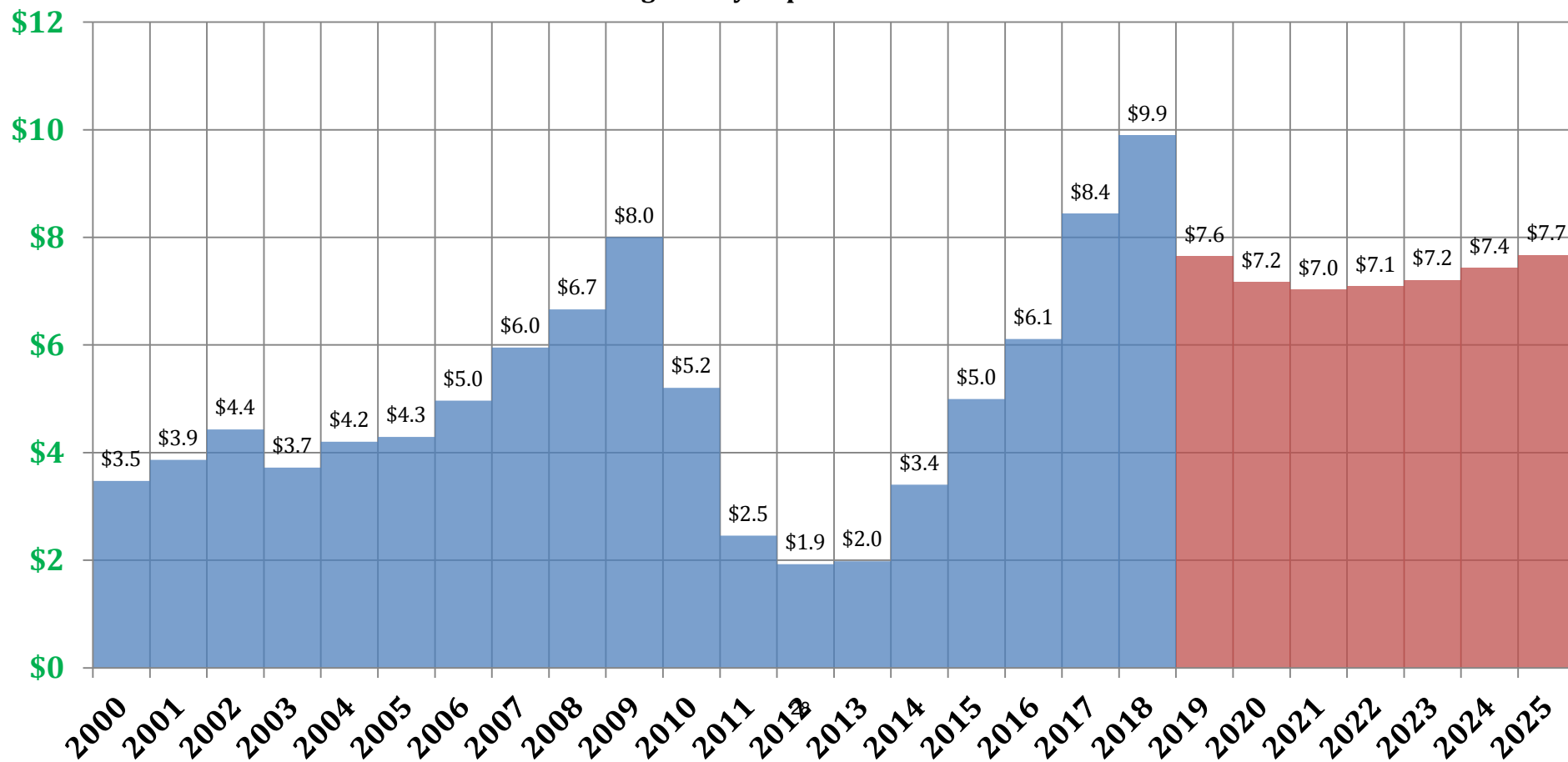
King County New Construction



King County New Construction

In billions \$, with Actuals and Forecast bars

Source: King County Department of Assessments



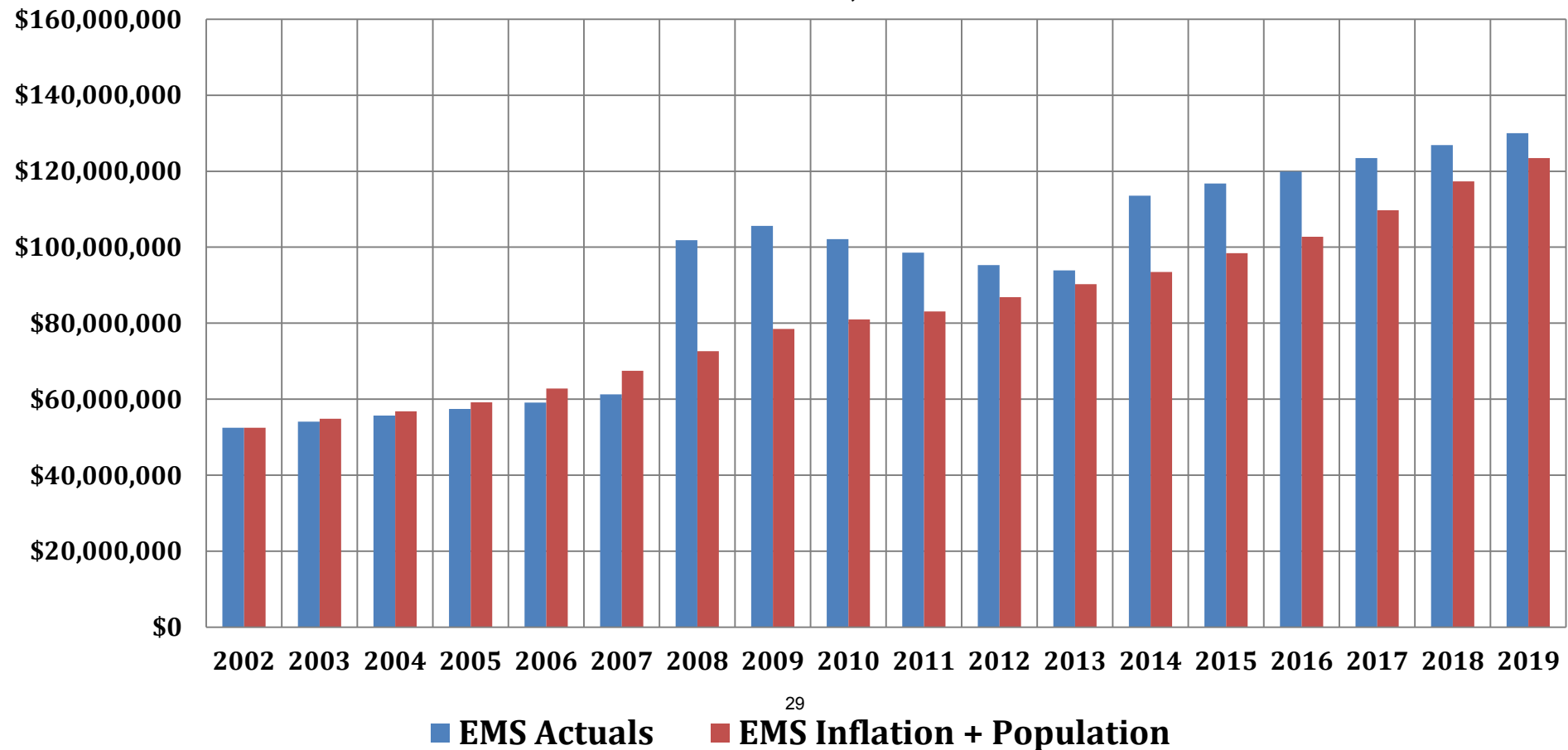
EMS Levy Amounts (Actuals vs. Inflation+Population)



EMS Levy Amounts (2002-2019)

EMS Actuals (2019 Forecast) & EMS Inflation + Population Estimates

Source: KC DOA, OEFA



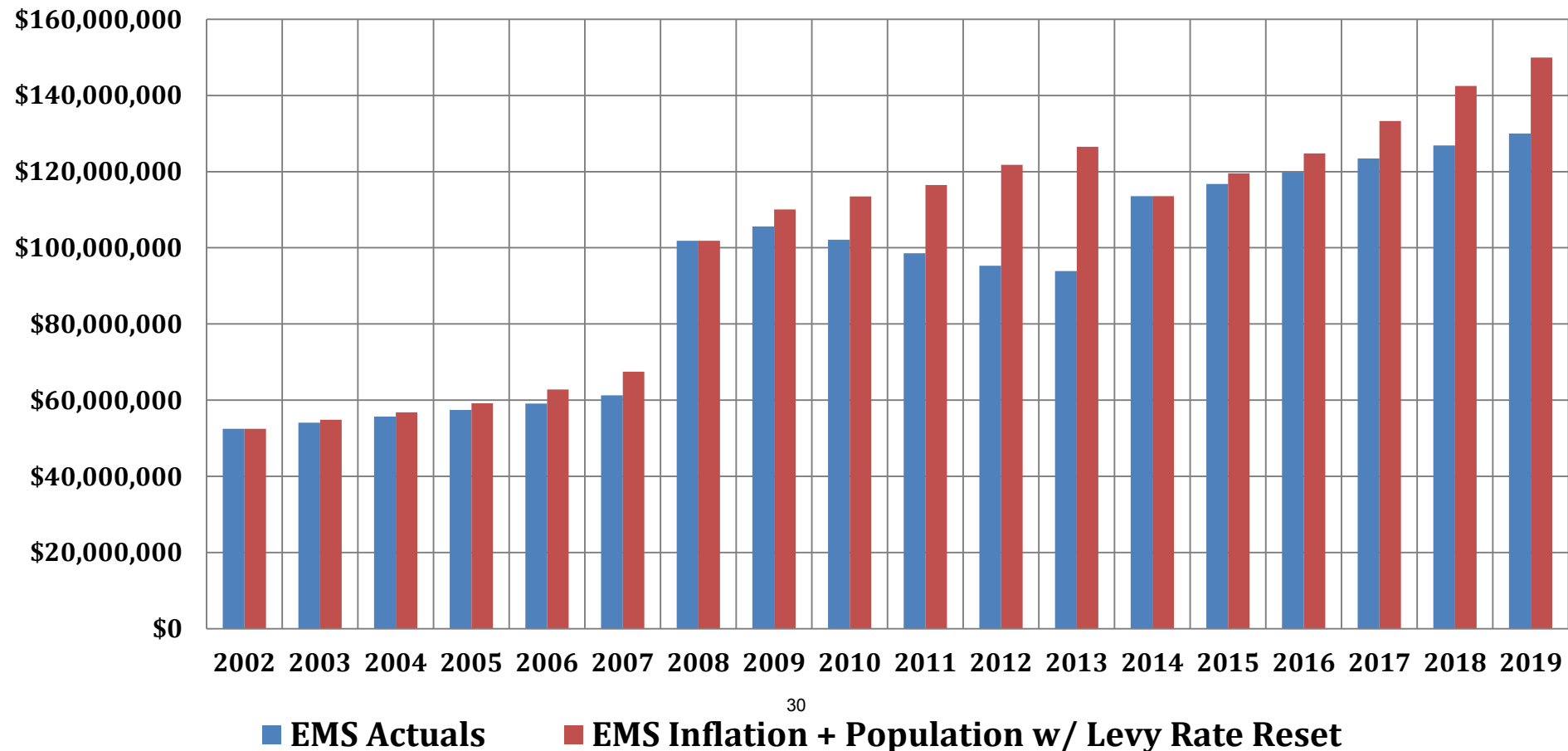
EMS Levy Amounts with Levy Reset each Levy Period



EMS Levy Amounts w/ Levy Rate Reset each Levy Period

EMS Actuals & EMS Inflation + Population with Levy Rate Reset

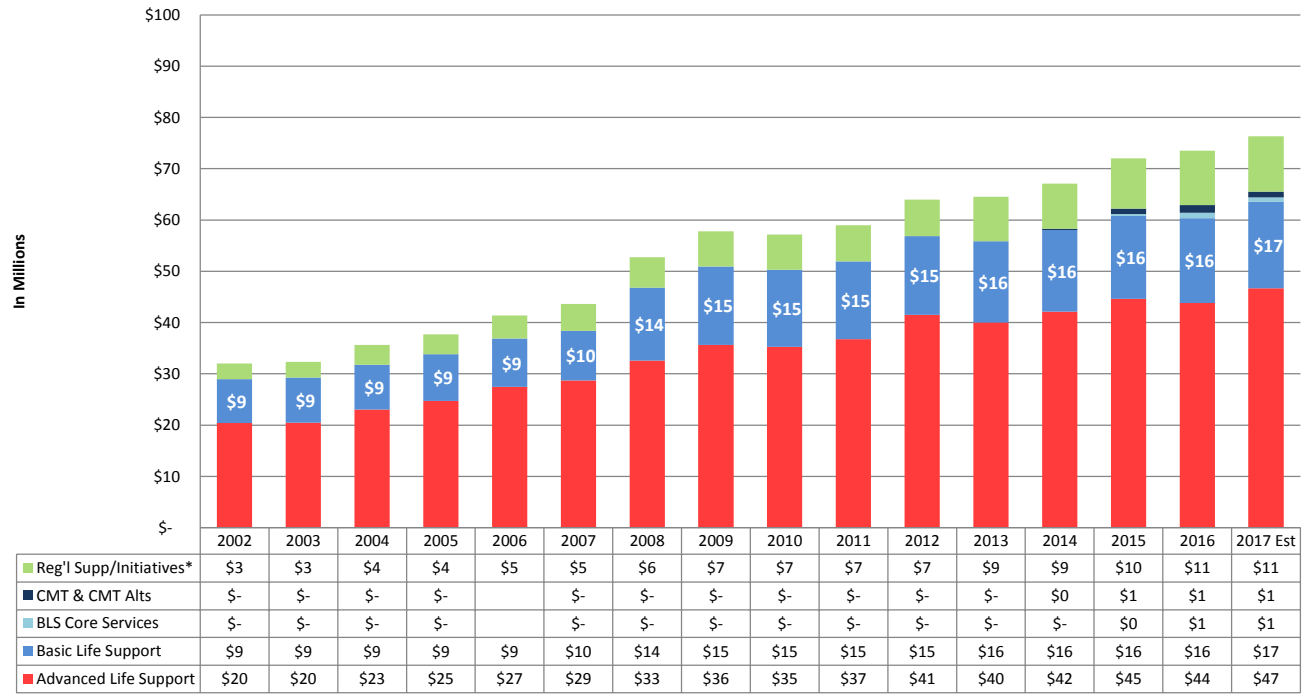
Source: KC DOA, OEFA



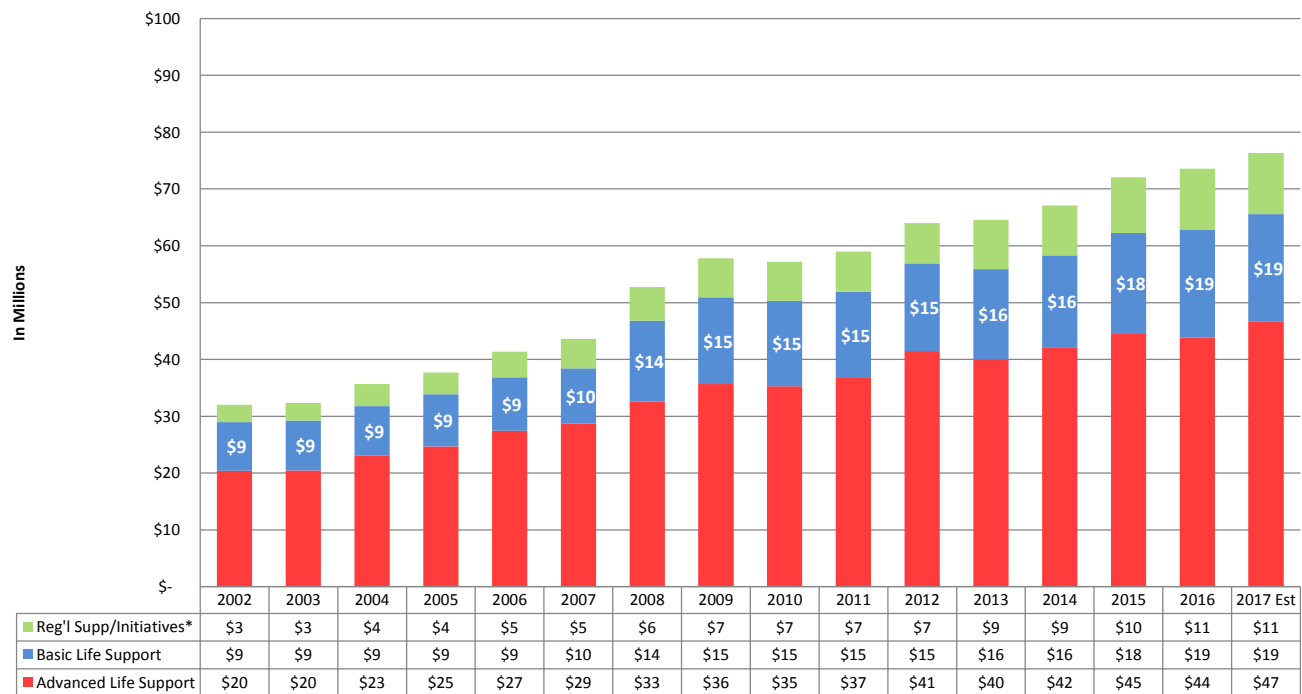
King County Office of Economic and Financial Analysis

<http://www.kingcounty.gov/independent/forecasting.aspx>

BLS Total Funding (breaks out BLS Allocation, BLS Core Services, and CMT/Alts to CMT)



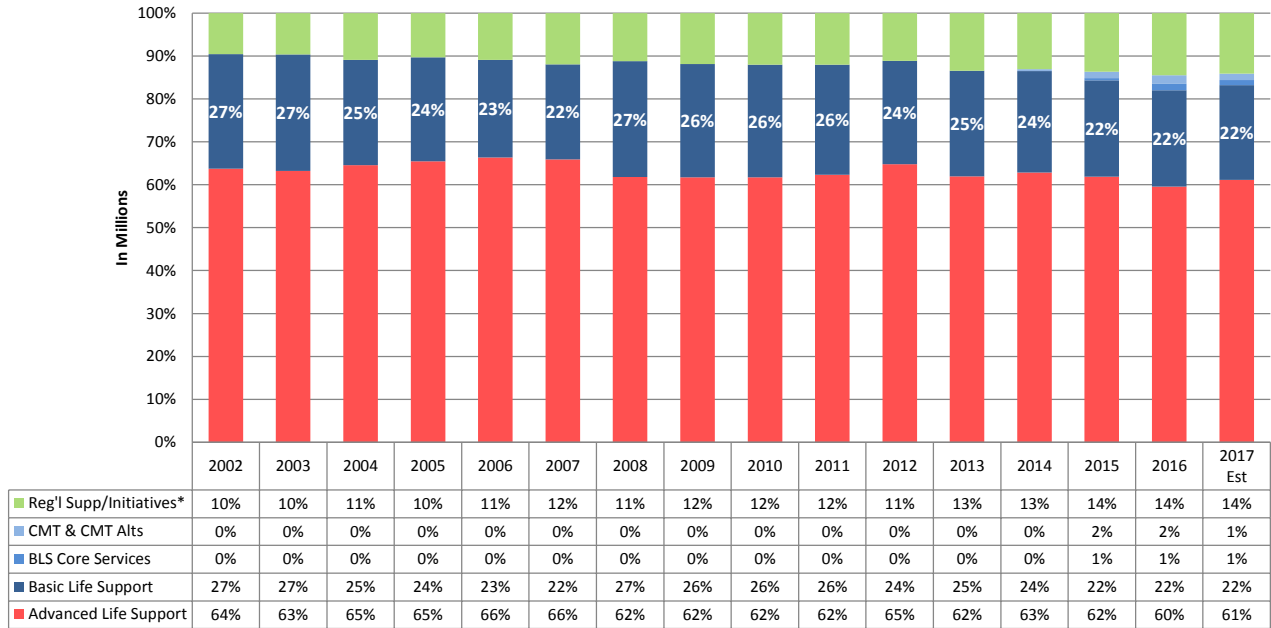
BLS Total Funding (combines BLS Allocation, BLS Core Services, and CMT/Alts to CMT)



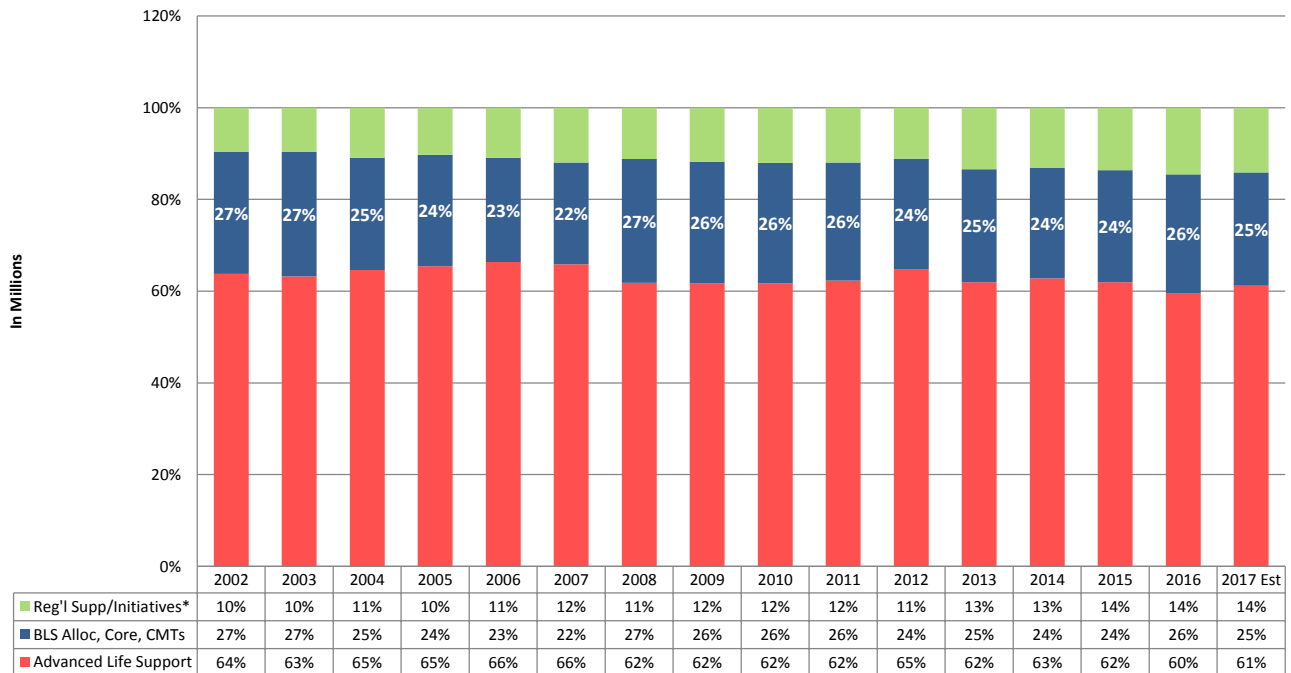
*Includes audit

3/8/2018

BLS as % of Total Expenditures (breaks out BLS Allocation, BLS Core Services, and CMT/Alts to CMT)



BLS as % of Total Expenditures (combines BLS Allocation, BLS Core Services, and CMT/Alts to CMT)



*Includes audit

3/8/2018

Levy Funding Supporting BLS

3/8/2018

Type of Funding	BLS Allocation	BLS Core Services	Programs Available to All BLS Agencies	Targeted Regional Approaches - BLS	RSSI Programs Supporting BLS	
How Distributed, Used, and examples	<i>Distributed based on allocation to all agencies; can be to cover any BLS expense.</i> <i>To prevent any BLS agency having a reduced allocation ~\$220k of supplemental funding added in 2014.</i>	<i>Distributed based on allocation to all agencies.</i> <i>Can be used for equipment, unplanned expenses or added/supplemental programs. Primary use has been for power stretchers & defibs, pooled to support agency portion of CMT costs. When funding for an aid car was lost, Bellevue used \$s to keep an aid car in service.</i>	<i>Funding available to all BLS Agencies. Programs include or require specific scopes of work and some type of application.</i> <i>Includes BLS QI & Training SI, Small Grants for EMS Agencies; BLS Small Grants for Injury Prevention, E&E, Taxi Vouchers, Alternatives to CMT</i>	<i>Programs targeting specific areas that have eligibility requirements, includes programs such as CMT, Reg'l EMT Initial Training SI</i>	<i>Services provided by levy to BLS Providers. Include RSSI programs such as Regional Medical Direction, Regional QI, Regional Records Management including ESO NEMSIS and other dataset, Online Training - EMT & PCE, CBT Workshops, Taxi Vouchers, Nurseline, Vulnerable Populations SI (VPSI), Communities of Care</i>	
Subcommittee actions	Total amount of funding, yearly increase formula & methodology for allocating to BLS agencies reviewed and recommended by BLS Subcommittee.	BLS Subcommittee review to determine if continue, if so, potential modifications and funding level.	BLS Subcommittee can choose to review and make recommendations to Regional Services Subcommittee.	Review in both BLS and Regional Services Subcommittees depending on project	These services reviewed in Reg'l Services Subcommittee as part of the levy planning process and adjusted to meet needs of providers.	
How funded	Annual Allocation	Biennial allocation	Funding by project	Funding by project	Funding by service or project	
TOTAL						
2014-2017 \$s	\$65,508,662	\$2,355,835	\$888,701	\$3,352,886	\$15,511,413	\$87,617,498
2014-2017 Avg	\$16,377,166	\$785,278	\$347,499	\$1,076,416	\$4,020,782	\$22,607,141
% of BLS Total	75%	3%	1%	4%	18%	